

Kosnic
**DD218 Power
and Color
Temperature
Switchable
LED DD Lamp**



Kosnic DD218 Power and Colour Temperature Switchable LED DD Lamp Instruction Manual

[Home](#) » [Kosnic](#) » Kosnic DD218 Power and Colour Temperature Switchable LED DD Lamp Instruction Manual 

Contents

- [1 Kosnic DD218 Power and Color Temperature Switchable LED DD Lamp](#)
- [2 Product Usage Instructions](#)
- [3 Installation Instruction](#)
- [4 FAQs](#)
- [5 Documents / Resources](#)
 - [5.1 References](#)



Kosnic DD218 Power and Color Temperature Switchable LED DD Lamp



Specifications:

- Product Name: Power and Color Temperature Switchable LED DD Lamp
- Models: DD212/2P-SCT, DD212/4P-SCT, DD218/2P-SCT, DD218/4P-SCT
- Manufacturer: Kosnic Lighting Ltd
- Website: www.kosnic.com

Product Usage Instructions**Installation:**

1. Ensure the power supply is switched off before installation.
2. Connect the lamp to the lampholder using the side terminals as indicated in the manual.
3. Do not wire the lamp to terminals on the same side to avoid circuit issues.

Switching Power and Color Temperature:

1. Refer to the user manual for instructions on how to switch between power levels and color temperatures.
2. Make sure to follow the correct steps to avoid damaging the lamp.

Maintenance:

Regularly clean the lamp and ensure it is free from dust and debris for optimal performance.

Safety Precautions:

Follow all safety instructions provided in the manual to prevent accidents or damage.

Power and Colour Temperature Switchable LED DD Lamp

- Please read these instructions thoroughly before use and retain for future reference.

Safety Information

- Installation must be carried out in accordance with national building and wiring regulations. If you are in any doubt about installing this product, please consult a qualified electrician.
- Before commencing installation or any maintenance, turn off and isolate the circuit to be worked on by removing the fuse or switching the circuit breaker off at the distribution board.
- It is the responsibility of the installer to ensure the luminaire continues to meet safety requirements.
- Add a warning label, visible when changing the lamp, showing the substance of: Warning – Kosnic LED DD lamps only.
- For maximum energy savings, bypass all control gear and wire from the mains to the lampholder.
- This product is suitable for connection to a 220-240Vac 50/60Hz supply.
- Ensure appropriate personal protective equipment is used during installation.
- When drilling or cutting holes take care not to damage existing pipework or wiring.

Luminaires with Magnetic Ballast (Choke)

- Remove the starter and any power factor capacitor. The capacitor may be left in place but the energy savings will be less.
- Plug the LED DD lamp directly into the lampholder

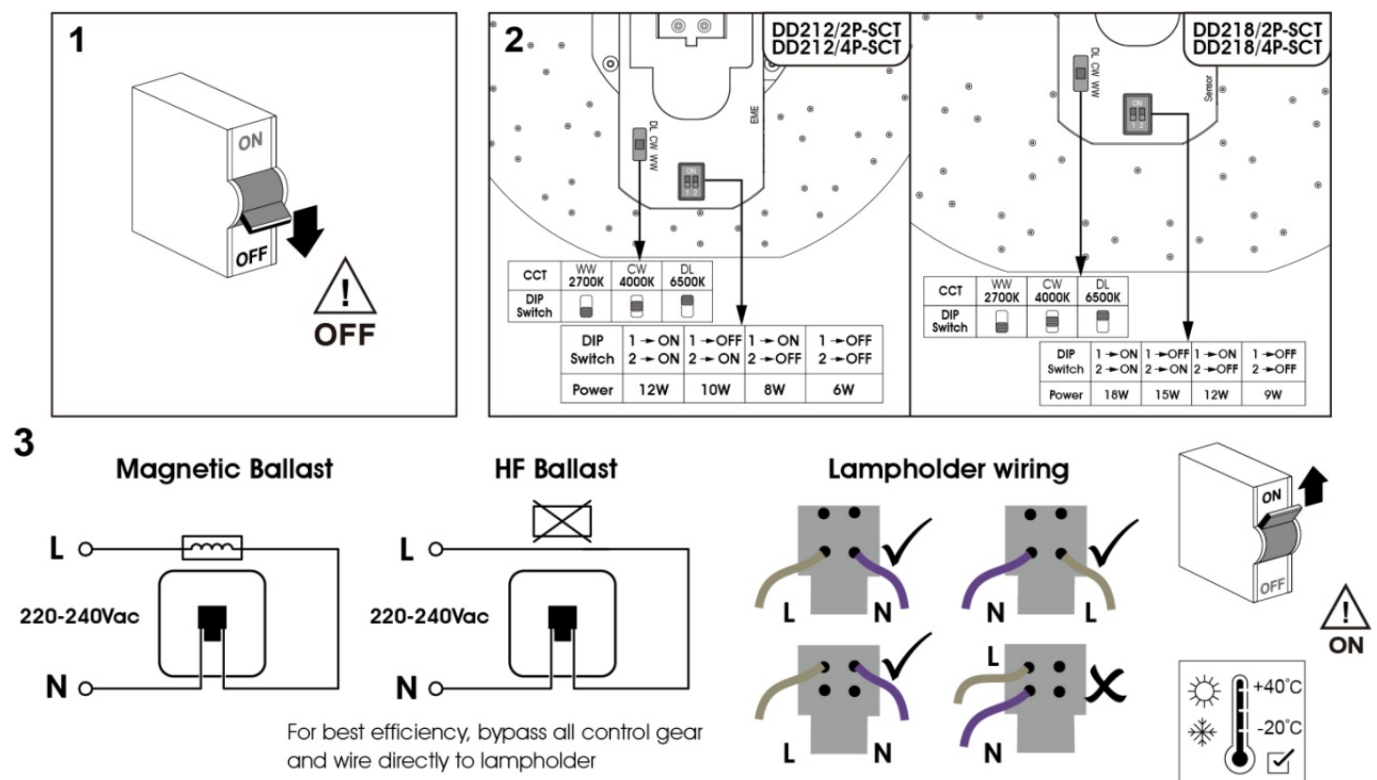
Luminaires with Electronic Ballast (High Frequency)

- The electronic ballast is not required and must be removed or bypassed.
- Wire the Live and Neutral directly from the supply to the lampholder terminals.
- The Live and Neutral must be wired to opposite side terminals on the lampholder appropriate to the lamp. They must not be wired to terminals on the same side.
- A 1A fuse may be added between the Live supply and the lampholder to prevent the whole circuit from cutting out in the event of a fault in a single luminaire.

Note for Optional Emergency and Microwave Sensor

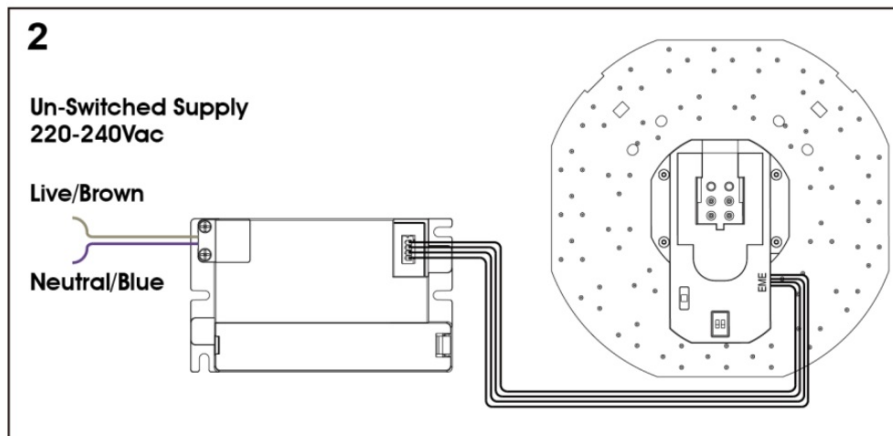
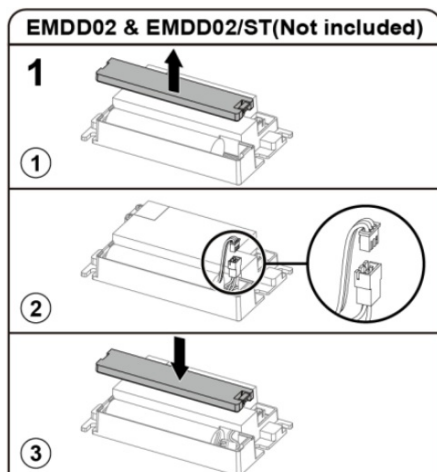
- Follow the detailed instructions supplied with the emergency module for additional details.
- Set the parameters according to the instructions provided with the Microwave Sensor.

Installation Instruction



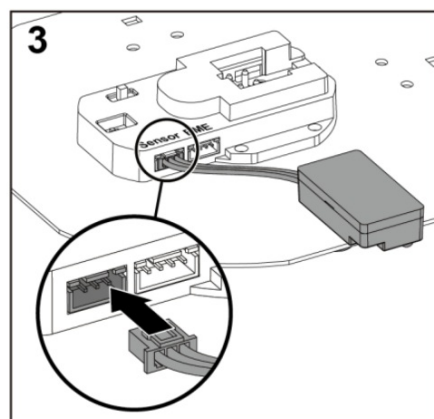
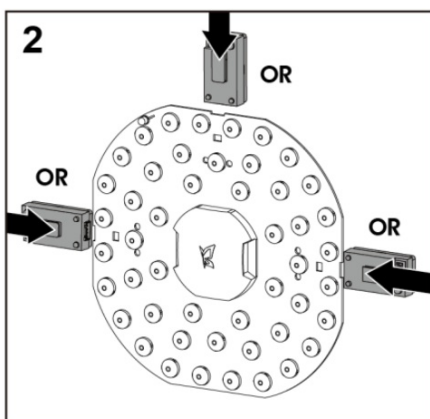
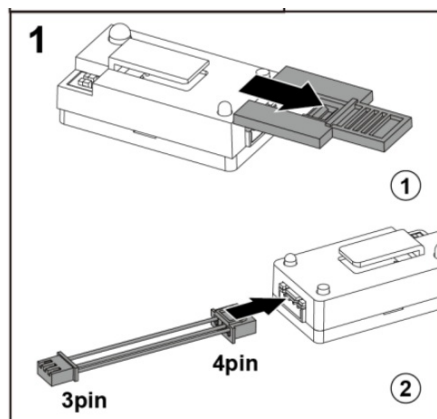
Optional Emergency Module Installation

EMDD02 & EMDD02/ST(Not included)



Optional Microwave Sensor Installation

RMW-DC(Not included)



The Waste Electrical & Electronic Equipment Regulations (WEEE) require that products bearing this symbol must not be disposed of with household waste as they may contain substances harmful to the environment. The Local Authority can provide advice on recycling

www.kosnic.com

Products Covered:

DD212/2P-SCT DD212/4P-SCT DD218/2P-SCT DD218/4P-SCT

Instruction LED DD II STD Lamp V1.1

- Kosnic Lighting Ltd, Unit 2, Kennetside, Bone Lane, Newbury, RG14 5PX, UK
- Kosnic Lighting France, 2bis Avenue Irene Joliot-Curie, 77700 Bailly-Romainvilliers, France

FAQs

Q: How do I switch between different color temperatures?

A: To switch between color temperatures, use the designated switches on the lamp following the provided instructions.


Q: Can I wire the lamp to terminals on the same side?

A: No, it is important to connect the lamp to the appropriate terminals to prevent circuit issues.

Q: What should I do in case of a fault in a single luminaire?

A: Refer to the manual for guidance on troubleshooting and contact customer support if needed.

Documents / Resources

	<p>Kosnic DD218 Power and Colour Temperature Switchable LED DD Lamp [pdf] Instruction Manual</p> <p>DD212-2P-SCT, DD212-4P-SCT, DD218-2P-SCT, DD218-4P-SCT, DD218 Power and Colour Temperature Switchable LED DD Lamp, DD218, Power and Colour Temperature Switchable LED DD Lamp, Temperature Switchable LED DD Lamp, Switchable LED DD Lamp, LED DD Lamp</p>
---	--

References

- [Kosnic – Kosnic Lighting Ltd, a leading designer, manufacturer and established expert in LED technology](#)
- [Kosnic – Kosnic Lighting Ltd, a leading designer, manufacturer and established expert in LED technology](#)
- [User Manual](#)

Manuals+. Privacy Policy

This website is an independent publication and is neither affiliated with nor endorsed by any of the trademark owners. The "Bluetooth®" word mark and logos are registered trademarks owned by Bluetooth SIG, Inc. The "Wi-Fi®" word mark and logos are registered trademarks owned by the Wi-Fi Alliance. Any use of these marks on this website does not imply any affiliation with or endorsement.