



## Contents [ [hide](#) ]

- [1 KOSMEN KM-60S Multi Functional 4-in-1 Smart Dehumidifier](#)
- [2 Function of the Button](#)
- [3 Operating Instructions](#)
- [4 Connect Wifi](#)
- [5 Maintaining](#)
- [6 Specification](#)
- [7 Error Code](#)
- [8 Troubleshooting](#)
- [9 Frequently Asked Questions](#)
- [10 Documents / Resources](#)
  - [10.1 References](#)



## KOSMEN KM-60S Multi Functional 4-in-1 Smart Dehumidifier



## Important Notice

- Always keep the unit in vertical position and on a firm flat surface at all times.
- Ensure that there is at least 300mm between the sides of the appliance and any flammable, heating materials.
- Do not cover the appliances intake or outlet grilles.
- For indoor use only.
- Not suitable for use in cabinet, closet, boats, caravans or similar locations.
- Leave the unit to stand for one hour before connecting to the mains supply after transport or when it has been tilted (e.g. during cleaning).
- The mains supply must conform to the specification shown on the rating label at the back of the unit.
- Avoid overloading circuits, which is caused by using more electrical amps than your wiring can support. Overloading electrical wires can cause excessive heat and electrical fires.
- Avoid the appliance from splash.
- Examine the cord carefully. Make sure that it is not punctured or frayed. Inspect the plug to ensure that the prongs are secure and the plastic surrounding it is not cracked.
- Never use the plug to start and stop the unit. Always use switch on the control panel.
- Before moving the unit, turn off all controls, then unplug and empty the water tank.
- Don't use bug sprays or other flammable cleaners on the unit.

- Never pour or spray water over the unit.
- This appliance can be used by children aged from 8 years and above and persons with reduced physical, sensory or mental capabilities or lack of experience and knowledge if they have been given supervision or instruction concerning use of the appliance in a safe way and understand the hazards involved. Children shall not play with the appliance. Cleaning and user maintenance shall not be made by children without supervision.
- Only a licensed professional is allowed to dismantle or modify the appliance.
- Suggested to send the appliance for professional maintenance periodically.

## Function of the Button

### Operation

#### ON/OFF

Press “ON/OFF” to start the dehumidifier. Press again to stop the BUTTON dehumidifier.



#### HUMIDITY SETTING



Press “HUMIDITY” button to set the required humidity. It can be chose “CO” (continuous dehumidifying) and 40%~70%. It sets 10% by every press.

#### TIMING



Press the “Timer” button, the timing indicator lights up in green, the timing time can be adjusted in 1-24 hours, and then press the “Timer” button until the display shows 00. After eight flashes, the display shows the current humidity and the timing function is turned off.

## **DRY**



Press the “Dry” button to increase the wind speed and enhance the hot air effect.

## **WIND SPEED SETTING**



Press the “WIND SPEED SETTING”, either “high” or “middle” “low” can be selected.

## **ANION**



Press the “ANION” button to turn on the negative ion sterilization function.

## **WIFI**



Hold the “WiFi” button for 5 seconds, the wifi indicator light flashes continuously, it can connect wifi to the App on the phone.

**Remarks:**

In the DRY, the humidity and wind speed are automatically controlled by the dehumidifier, and the manual adjustment of humidity and wind speed is invalid.

**Indicator Lights****POWER ON/OFF:**

When the power cord is plugged in, the machine display shows the current ambient humidity. Press the power button, the power indicator will light green, and the machine will start running when the humidity is lower than the current ambient humidity.

- **WATER FULL:**

When the water tank is full, the full water indicator lights red, the compressor and the fan stop working, and the buzzer sounds three times to remind the user to empty the water in the water tank and ensure that the water tank is returned to its original position.

- **TIMING:**

When the timing is activated, the timing indicator will be green.

- **LOW WIND SPEED:**

When you set the wind speed to low, the low wind indicator will be green.

- **MIDDLE WIND SPEED:**

When you set the wind speed to middle, the middle wind indicator will be green.

- **HIGH WIND SPEED:**

When you set the wind speed to high, the high wind indicator will show green.

- **DRYING CLOTHES:**

When the dehumidifier is set to the “Dry” mode, the wind speed is set to high and runs in continuous dehumidification mode, and the indicator light is green.

- **ANION:**

When set “Anion”, the anion button will turn green.

## Operating Instructions

When the appliance is powered on for the first time, the appliance enters the standby state, press the power button to enter the running state, and the first power-on and start-up operation is continuous dehumidification, the motor runs at low speed, the continuous dehumidification indicator lights, if it is turned on again after the power off, Humidity setting programmed same as before power shutdown. Press the humidity mode button, the humidity can be switched between 70% 60% 50% 40% continuous dehumidification, the corresponding indicator light on, if the pre-set humidity is higher than the current ambient humidity +5%, the machine will stop working after 5 seconds. When the set humidity is lower than the current ambient temperature, the machine will work normally.

### Dehumidification Running

1. When the compressor has passed the protection for 3 minutes and the indoor humidity  $\geq$  set humidity + 5% RH, the compressor will work again.
2. When the indoor humidity  $<$  set humidity – 5% RH, the compressor is turned off.
3. Set the humidity – 5% RH  $<$  indoor humidity  $<$  set humidity + 5% RH to keep the original compressor working.
4. The compressor stops the fan if it has not been operated for three minutes after the humidity has dropped.
5. When the machine beeps three times and the water full indicator light is on, the machine stops working. The water in the water tank needs to be drained and the water tank is reinstalled. If the water full indicator light is still on, check whether the water tank is in place. The operation is started until the water full indicator is off.
6. Defrost
  - After the machine starts to run for 30 minutes, the copper coil sensor starts to detect the tube temperature. When the tube temperature is  $\leq -1$  °C (there is 3 seconds of detection time), the compressor stops and the fan runs, and the defrosting operation starts. The lights are shining.
  - When the temperature sensor detects that the coil temperature on the evaporator is greater than or equal to 5 degrees and the detection is greater than or equal to 5 degrees for 3 minutes, the defrosting is exited.

### Drain Indicator

- **Water level float**

Do not remove the float from the tank. If the float in the tank is removed, the machine will not turn on or start.

- **Put water tank back.**

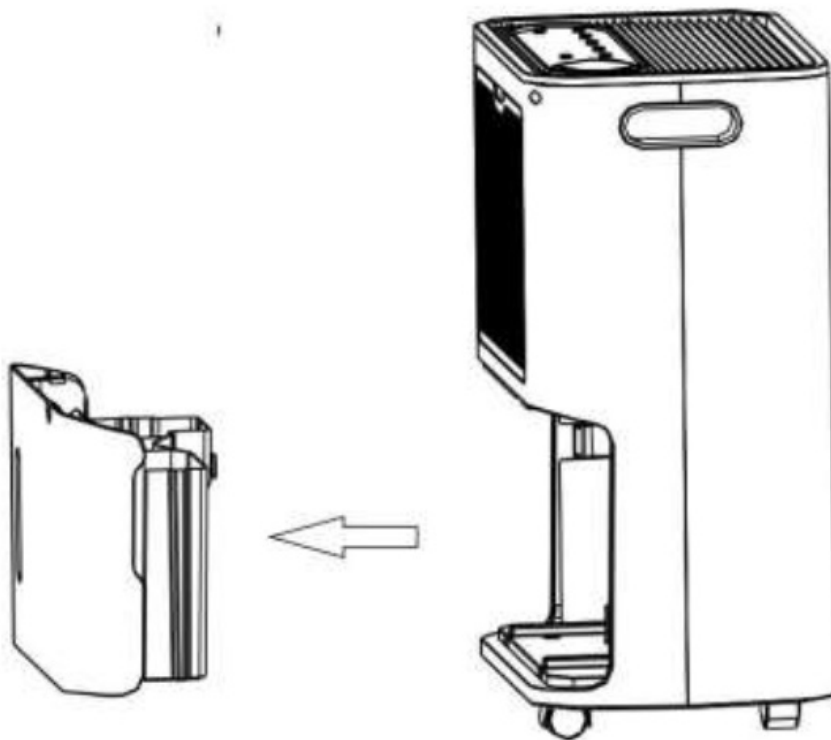
When placing in the water tank, push the water tank into the machine with both hands and put it in place. If the water tank is not put in place, the machine will not be able to start or turn on the water after the operation, the machine will overflow.

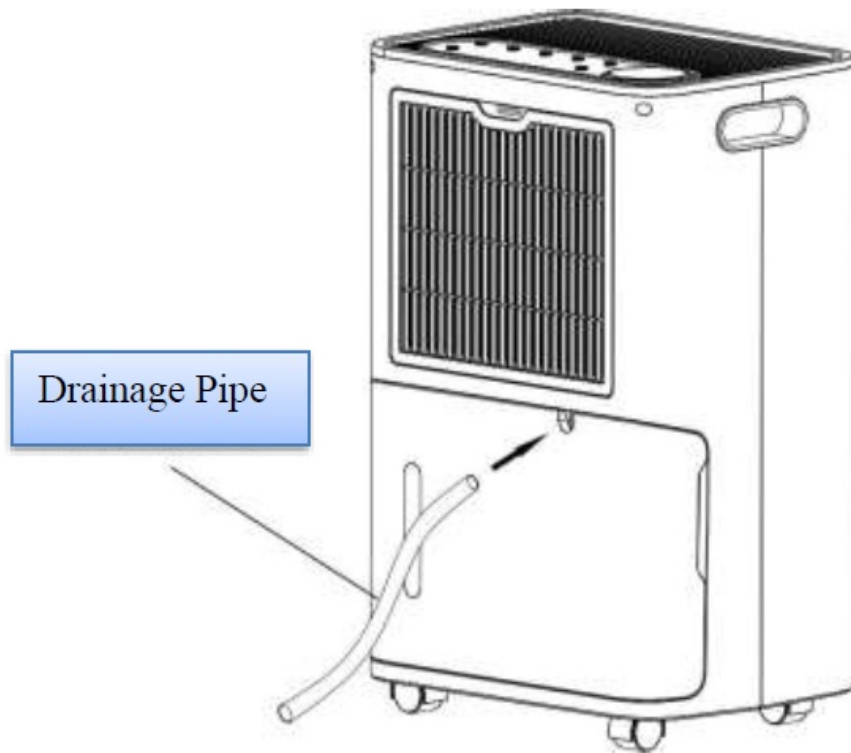
- **Clean the water tank**

If the water tank is dirty, clean it with cold/warm water. Do not use detergent, steel ball, chemically treated dust cloth, gasoline, benzene, thinner or other solvents as it may damage the water tank.

- **Continuous Drain**

This product has a continuous drain hole that is connected by a plastic tube (11mm inside) through which water can be drained. When using a water pipe, do not immerse the water outlet in the water to prevent the pipe from being too long or the pressure is formed in the pipe when the water outlet is blocked. The water flow is not smooth, resulting in water leakage.





## Connect Wifi

1. Download the application on the phone, app name "Smart Life" or "Tuya Smart".
2. Scan this QR code by "Smart Life" or "Tuya Smart", connect to the WiFi according guidance.
3. Attention:
  - When the device is pairing, please confirm the dehumidifier, mobile phone and the router, 3 devices are in a close distance. Try to make them get closer.
  - Ensure the network is stable and can be entered.
  - Follow the application's instruction to enter the ready connection status.
  - Ensure the WiFi password is correct.
  - Device can only connect Wifi 2.4Ghz.



## Maintaining

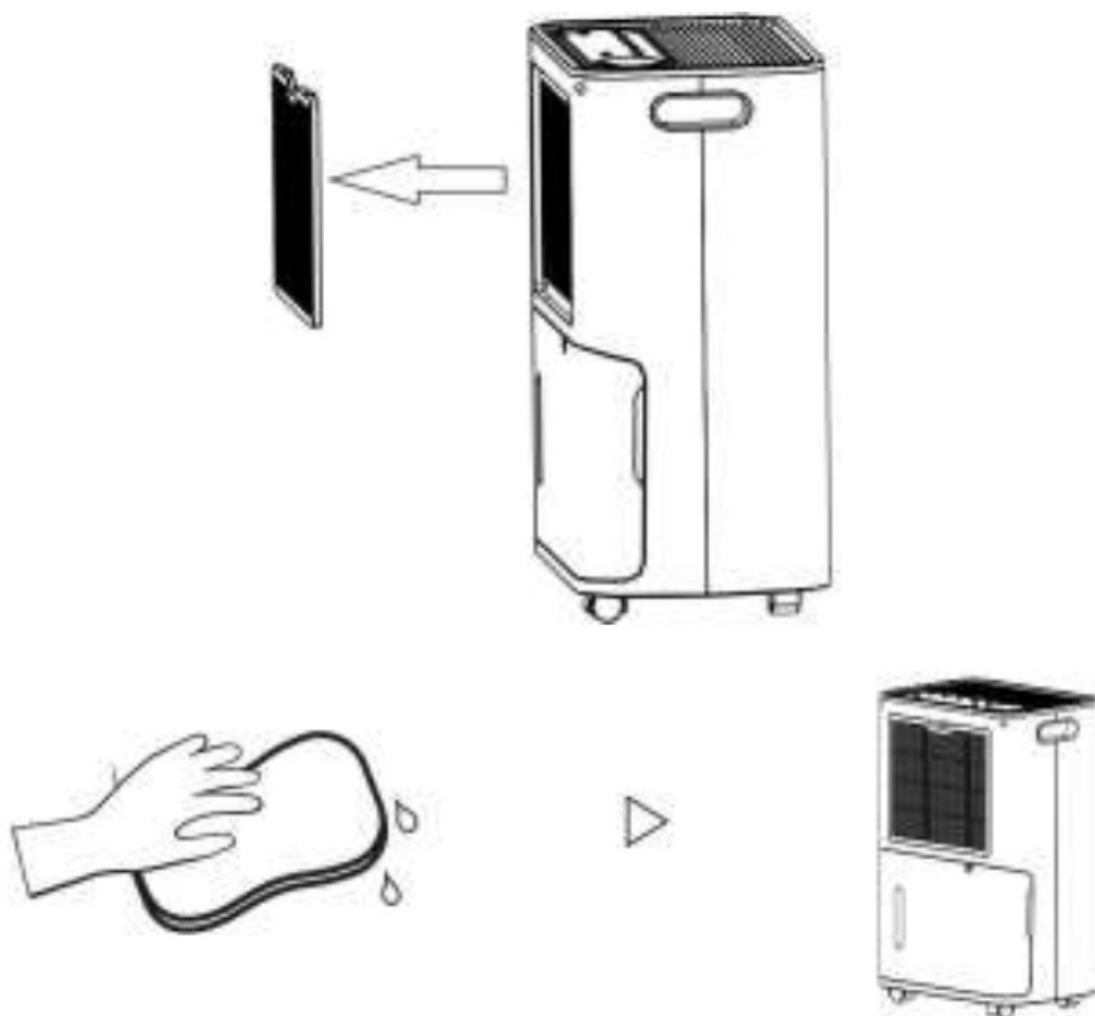


## 1. Cleaning

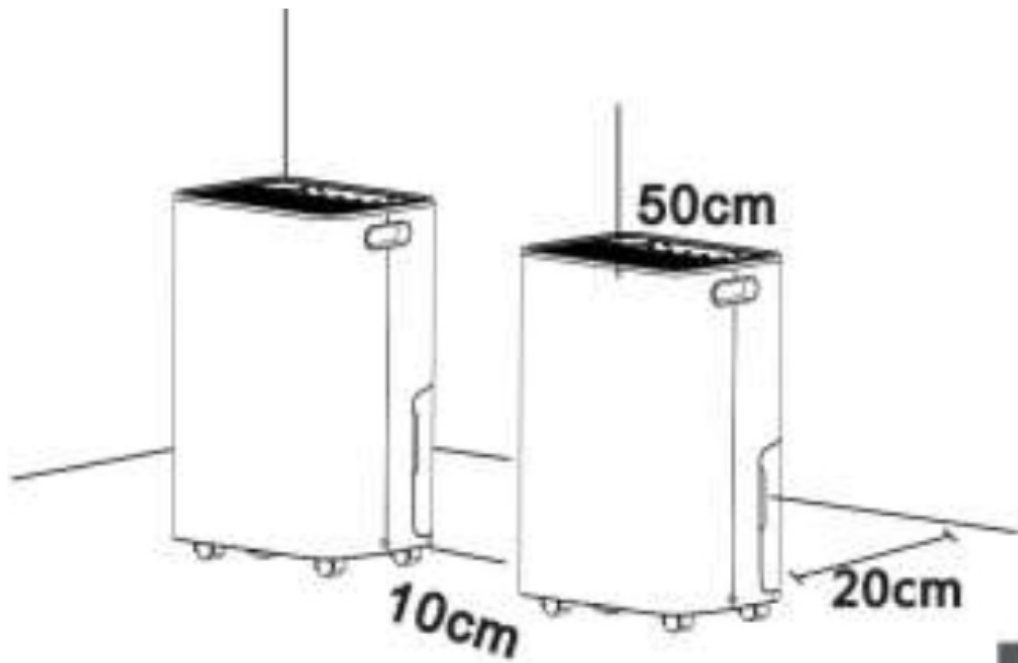
Wash the cleaning cloth in clean water, wring it out, and gently wipe the surface of the machine.



Remarks: Clean the carbon filter twice a month to ensure a healthy environment and energy saving.



## 2. Placing



When the dehumidifier is working, make sure the Minimum distance between air inlet & wall is 20cm. Minimum distance between two machines is 10cm. Minimum distance between air outlet & top is 50cm

## Specification

<b>Model</b>	<b>KM-60S</b>
<b>Application Area</b>	50 -110
<b>Dehumidifying Capacity</b>	60L/D (30°C 80%RH) 37L/D (27°C 60%RH)
<b>Operating Power</b>	695 W
<b>Amount of Airflow</b>	360 m³/h
<b>Refrigerant</b>	R410A
<b>Compressor</b>	Panasonic
<b>Power Supply</b>	220V /50Hz

<b>Operating Temp</b>	5-38 °C
<b>Water Tank</b>	8L
<b>Dimensions</b>	423 * 312 * 682 mm
<b>Net Weight</b>	23.5 KGS

## Error Code

<b>Fault Code</b>	<b>The failure</b>	<b>How to do with it</b>
E1	Temperature sensor breakdown	Replace with new temperature sensor.
E2	Humidity sensor breakdown	Replace with new humidity sensor.
HI	High current ambient humidity ( 95%)	Keep windows and doors closed and continuous usage.
LO	Low current ambient humidity( 30%)	The current environment doesn't need a dehumidifier.
HL	Low or high current temperature	Please use the dehumidifier in temperature range of 5~38°C.

## Troubleshooting

Please do not worry if you meet following problems in the use of dehumidifier. When confirmed as failure, timely contact for repairing.

<b>Problems</b>	<b>Phenomenon/Reason</b>	<b>Solutions</b>
-----------------	--------------------------	------------------

Dehumidifier does not work.	<ol style="list-style-type: none"> <li>1. Could be a power outage.</li> <li>2. The power switch is not on.</li> <li>3. Maybe the fuse has blown out.</li> <li>4. It's not the definite starting up time.</li> <li>5. The water tank may be full or not fixed well, and the light of full water on screen is flashing.</li> </ol>	<ol style="list-style-type: none"> <li>1. Please wait for power supply.</li> <li>2. Turn on the power switch.</li> <li>3. Change the fuse.</li> <li>4. Wait or cancel the time setting.</li> <li>5. Pour out water of water tank, then put it back.</li> </ol>
Unsatisfied dehumidification effect.	<ol style="list-style-type: none"> <li>1. The humidity setting is inappropriate.</li> <li>2. The front and back of the dehumidifier may be blocked.</li> <li>3. Dehumidification time may be not enough.</li> <li>4. Door and window may be open.</li> <li>5. The temperature indoor is lower than 5°C or higher than 38°C.</li> </ol>	<ol style="list-style-type: none"> <li>1. Set appropriate humidity.</li> <li>2. Clear the obstructions.</li> <li>3. Keep waiting.</li> <li>4. Close door and window.</li> <li>5. Please use the machine in the temperature of 5-38°C.</li> </ol>
Power off/on within a short time, dehumidifier doesn't work	3 minutes delay protection of compressor.	The machine will work after 3minutes.

Water leakage	1. Drain connection is slack. 2. The drainage system is blocked 3. The water tank isn't placed well.	1. Connect the drain. 2. Clean the stopper. 3. Place the water tank well.
Frost formation.	There is frost on the surface of the dehumidifier.	It's normal, the machine can defrost automatically.

The dehumidifier has a slight wobble.	A slight wobble occurs when turn on/off dehumidifier.	It's normal phenomenon.
---------------------------------------	---	-------------------------

## Kosmen Joint Stock Company


- Head office: No. 27B Street 12, Hiep Binh Phuoc Ward, Thu Duc City, Ho Chi Minh City, Vietnam.
- Ha Noi office: NV 4.7 Hai Au 2 Street, Cau Buou Urban Area, Thanh Tri District, Hanoi City, Vietnam.
- Da Nang office: No 385B Hai Phong, Tan Chinh Ward, Thanh Khe District, Da Nang City, Vietnam.
- Tay Nguyen office: No 1A Hoang Van Thu, Ward 4, Da Lat City, Lam Dong Province, Vietnam.
- Hotline: 0888 787 959

## Frequently Asked Questions

### Q: Can children operate the dehumidifier on their own?

A: This appliance can be used by children aged 8 years and above if they have been given proper supervision or instruction on safe usage. Children should not play with the appliance unsupervised.

# Documents / Resources

	<p><a href="#">KOSMEN KM-60S Multi Functional 4-in-1 Smart Dehumidifier [pdf]</a> User Manual</p> <p>KM-60S, KM-60S Multi Functional 4-in-1 Smart Dehumidifier, Multi Functional 4-in-1 Smart Dehumidifier, Functional 4-in-1 Smart Dehumidifier, Smart Dehumidifier, Dehumidifier</p>
---	--

## References

- [User Manual](#)

📁 KOSMEN

💎 Dehumidifier, Functional 4-in-1 Smart Dehumidifier, KM-60S, KM-60S Multi Functional 4-in-1 Smart Dehumidifier, KOSMEN, Multi Functional 4-in-1 Smart Dehumidifier, Smart Dehumidifier

---

## Leave a comment

Your email address will not be published. Required fields are marked \*

Comment \*

Name

Email

Website

☐ Save my name, email, and website in this browser for the next time I comment.

**Post Comment**

**Search:**

e.g. whirlpool wrf535swhz

**Search**

[Manuals+](#) | [Upload](#) | [Deep Search](#) | [Privacy Policy](#) | [@manuals.plus](#) | [YouTube](#)

This website is an independent publication and is neither affiliated with nor endorsed by any of the trademark owners. The "Bluetooth®" word mark and logos are registered trademarks owned by Bluetooth SIG, Inc. The "Wi-Fi®" word mark and logos are registered trademarks owned by the Wi-Fi Alliance. Any use of these marks on this website does not imply any affiliation with or endorsement.