

KORG
E2 Bluetooth MIDI
Connection



KORG E2 Bluetooth MIDI Connection User Guide

[Home](#) » [KORG](#) » KORG E2 Bluetooth MIDI Connection User Guide 

Contents

- [1 KORG E2 Bluetooth MIDI Connection](#)
- [2 Connections](#)
- [3 Disconnection](#)
- [4 Installing the KORG BLE-MIDI Driver](#)
- [5 Uninstalling the KORG BLE-MIDI Driver](#)
- [6 Documents / Resources](#)
 - [6.1 References](#)

KORG

KORG E2 Bluetooth MIDI Connection



- Apple, iPad, iPhone, Mac, iOS and OS X are trademarks of Apple Inc., registered in the U.S. and other countries.
- Windows is a trademark of Microsoft Corporation in the U.S. and other countries.

- Bluetooth is a registered trademark of Bluetooth SIG, Inc.
- All product names and company names are the trademarks or registered trademarks of their respective owners.

This document explains how to use a Bluetooth MIDI device via a wireless connection.

TIP The contents and operation may differ depending on your operating system or the version of your app. For the latest information and more detailed information, refer to the Korg website (www.korg.com) or the KORG app Help Center (<https://support.korguser.net/hc/>).

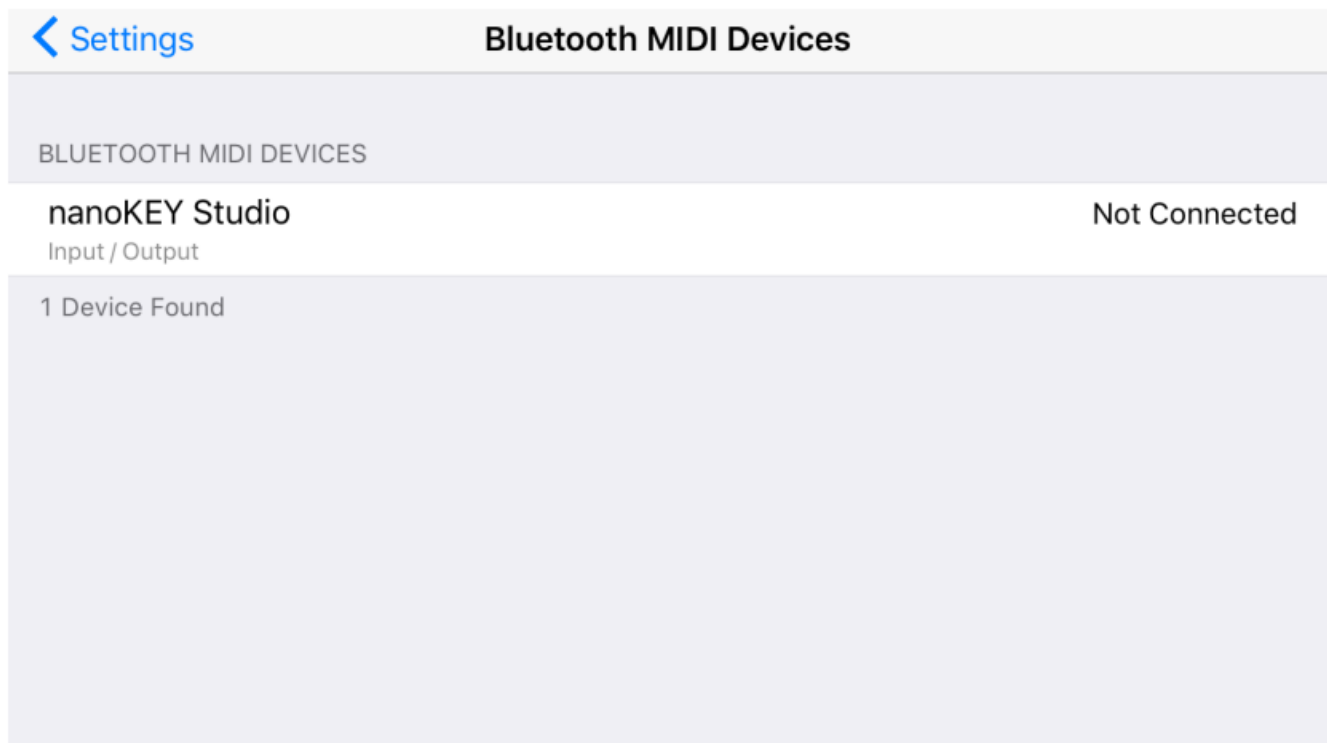
Connecting the iPhone/iPad to your Bluetooth MIDI device

Operating requirements

iPhone/iPad that supports Bluetooth 4.0 and has iOS 14 or later installed

Connections

- In the case of an app that supports Bluetooth MIDI
- In the app, open the Bluetooth MIDI settings, and in the list that appears, tap the Bluetooth MIDI device that you want to use; the connection will be established. For details on how to open Bluetooth MIDI settings, refer to the manual for your app.
- This connection operation is required each time you use a Bluetooth MIDI device.
- **TIP** With iOS 16/iPadOS 16 and later, the devices are automatically connected when you turn on the power of your Bluetooth MIDI device if it has already been paired.



Opening the Bluetooth MIDI settings for your app

KORG Gadget

In the upper right of the screen, tap the gear icon to open settings; then in “Bluetooth MIDI,” tap Settings to open

Bluetooth MIDI device settings.



KORG Module

In the upper right of the screen, tap the gear icon to open settings; then in “Bluetooth MIDI,” tap Scan to open Bluetooth MIDI device settings.



Apple GarageBand

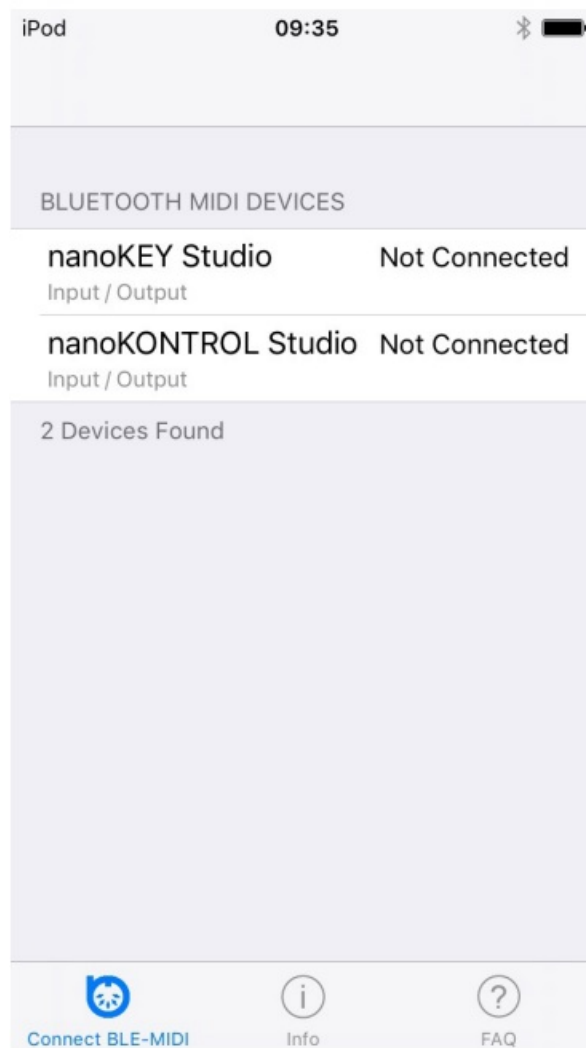
In the upper right of the screen, tap the settings icon to open settings; then open “Advanced”. When you turn on “Run in Background,” the “Bluetooth MIDI Devices” item appears. Tap “Bluetooth MIDI devices” to open Bluetooth MIDI device settings.

If the app does not support Bluetooth MIDI

- In the App Store, search for “Bluetooth MIDI Connect”, and install it.



Start Bluetooth MIDI Connect, and in the list that appears, tap the Bluetooth MIDI device that you want to use; the connection will be established. When the connection is established, you’ll also be able to use the MIDI port of the Bluetooth MIDI device from an app that supports Core MIDI.



- This connection operation is required each time you use a Bluetooth MIDI device.
- TIP With iOS 16/iPadOS 16 and later, the devices are automatically connected when you turn on the power of your Bluetooth MIDI device if it has already been paired.

Disconnection

- If you want to connect your Bluetooth MIDI controller or other MIDI device to a different device after connecting to your iPhone/iPad, you must disconnect the device from your iPhone/iPad first.
- NOTE: You can also disconnect the devices by switching Bluetooth OFF in the Settings app on your iPhone/iPad.
- To reconnect the iPhone/iPad, switch Bluetooth ON again.

When using Bluetooth MIDI-compatible apps

iOS 15/iPadOS 15 or earlier

- Open the Bluetooth MIDI settings in your application, and tap the Bluetooth MIDI device shown in the list of your app to disconnect it.

iOS 16/iPadOS 16 or later

- The connection will not be completely severed if you disconnect from the Bluetooth MIDI settings of your application. In the Bluetooth settings of the Settings app, tap “Forget this Device” for the Bluetooth MIDI device in question.

When using applications that are not Bluetooth MIDI-compatible

iOS 15/iPadOS 15 or earlier

- Launch the Korg Bluetooth MIDI Connect app, and tap the Bluetooth MIDI device shown in the list of your app to disconnect.

iOS 16/iPadOS 16 or later

- The connection will not be completely severed if you disconnect using Korg Bluetooth MIDI Connect. In the Bluetooth settings of the Settings app, tap “Forget this Device” for the Bluetooth MIDI device in question.

Connecting your Mac to a Bluetooth MIDI device

Operating requirements

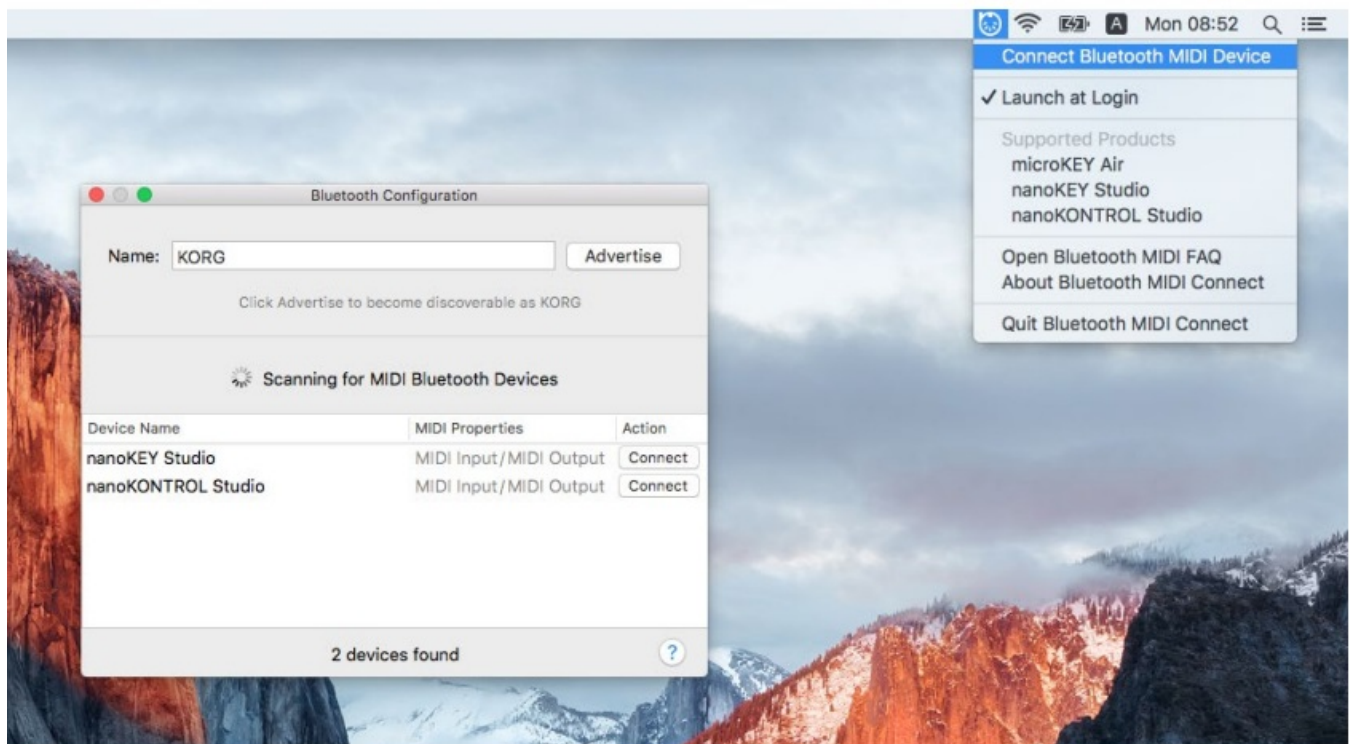
- Mac that supports Bluetooth 4.0 and has OS X Ventura or later installed

Connections

- In the Mac App Store, search for “Bluetooth MIDI Connect,” and install it.



When you start Bluetooth MIDI Connect, the Bluetooth MIDI Connect icon is shown in the menu bar. From this menu, choose “Connect Bluetooth MIDI Device”; the Bluetooth Configuration window appears. Click the “Connect” button of the Bluetooth MIDI device in the list shown in the window; now you can use the MIDI ports of the selected Bluetooth MIDI Device. In the settings of the application that you’re using, select the MIDI IN and MIDI OUT ports.



- TIP If Bluetooth MIDI Connect is running, a notification appears when a Bluetooth MIDI device is found. You can open the Bluetooth connections window by clicking this notification.

Disconnection

- If you want to connect your Bluetooth MIDI controller or other MIDI device to a different device after connecting to your Mac, you must disconnect the device from your Mac first.
- The connection will not be completely severed if you disconnect using Bluetooth MIDI Connect.
- In the Bluetooth dialog box of System Settings, tap “Forget This Device...” for the Bluetooth MIDI device in question.
- Another way to do this: Toggle Bluetooth off in the Bluetooth dialog box of System Settings. To reconnect the device with the Mac, switch Bluetooth ON again.

Connecting Windows to a Bluetooth MIDI device

Operating requirements

PC that has Windows 10 or later installed and is equipped with Bluetooth 4.0, or a computer with a connected USB adapter that supports Bluetooth 4.0 Smart

About Bluetooth connections

Use the Bluetooth functionality of Windows when you want to connect to a Bluetooth MIDI device. This device does not support Bluetooth connections using the dedicated software that’s included, when you’re using a commercially available Bluetooth USB adapter or the like.

Installing the KORG BLE-MIDI Driver

- To use Bluetooth MIDI on your Windows computer, the KORG BLE-MIDI Driver must be installed. From the Korg

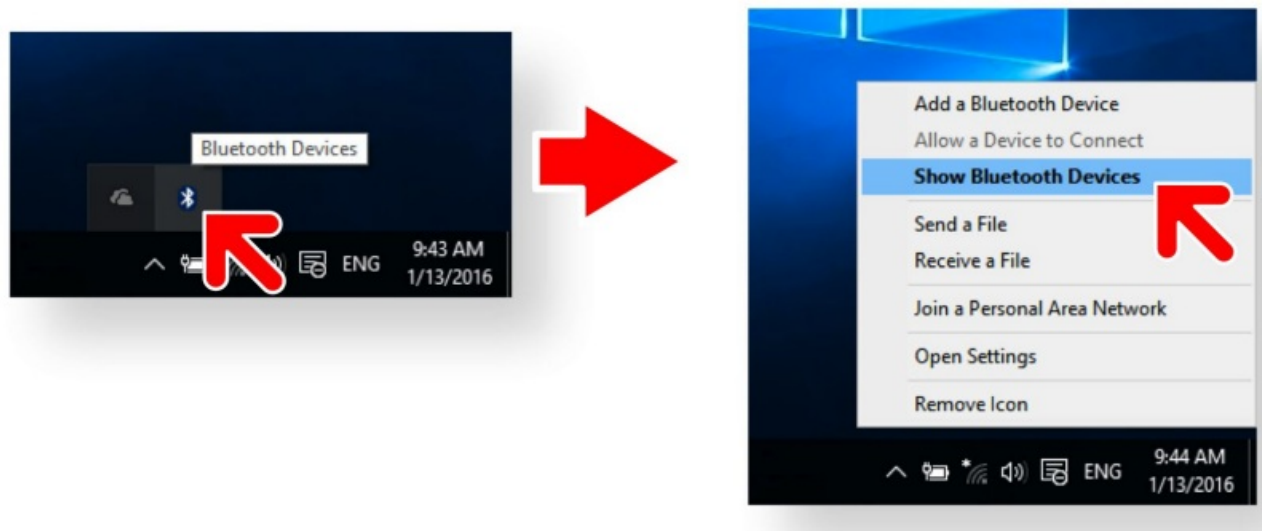
website (www.korg.com), download the KORG BLE-MIDI Driver and install it as described in accompanying manual.

- TIP BLE-MIDI is a technology that uses Bluetooth LE to wirelessly transmit and receive MIDI messages. The official name for Bluetooth LE is “MIDI over Bluetooth Low Energy”.

Connections

First you must connect Windows with the Bluetooth MIDI device. This operation is called “pairing.” Follow the steps below to pair.

1. Turn on the power of the Bluetooth MIDI device, and enable its wireless functionality.
2. Click the Bluetooth icon in the task tray, and choose “Show Bluetooth Devices.”

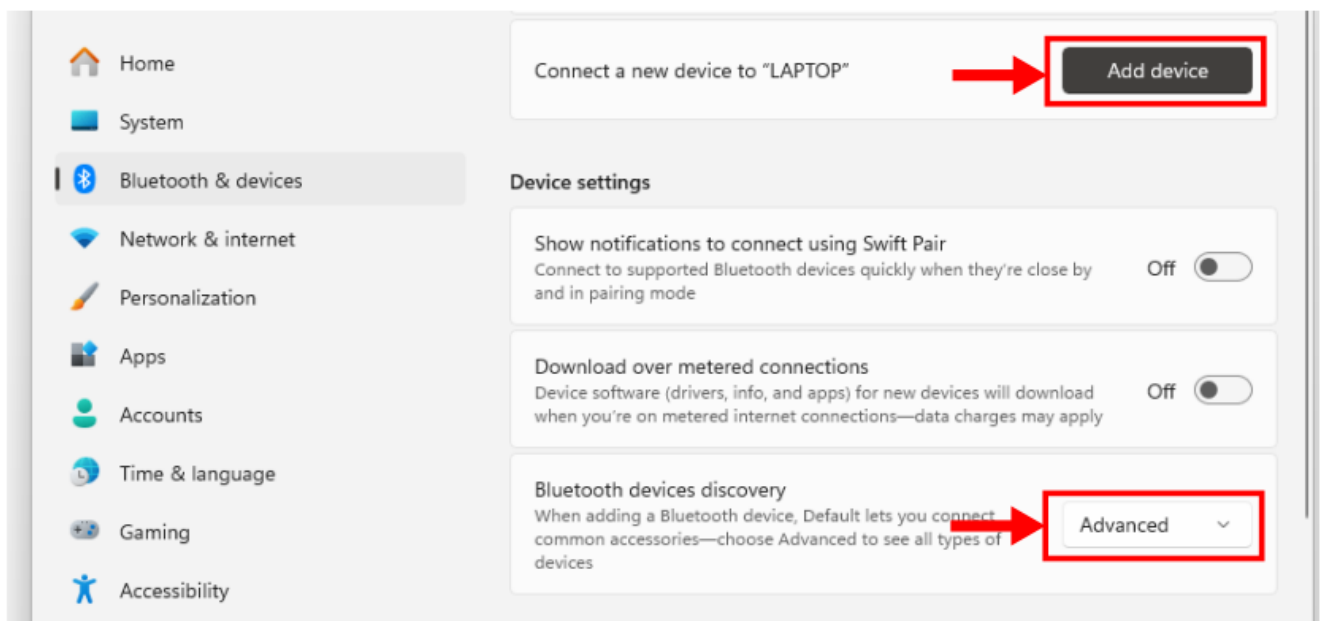


3. The “Bluetooth & Devices > Devices” screen appears.

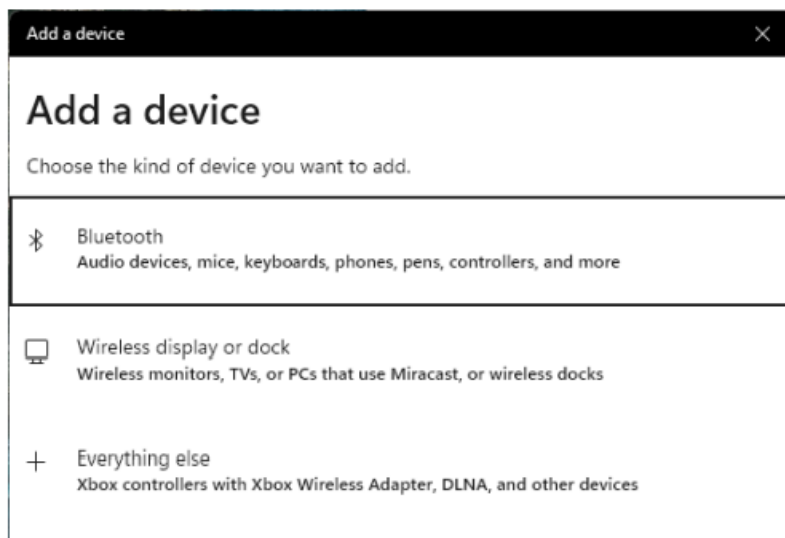
In “Device settings” – “Detect Bluetooth devices”, check whether “Advanced” is selected. If “Default” is selected, change it to “Advanced”.

Click “Add Device”.

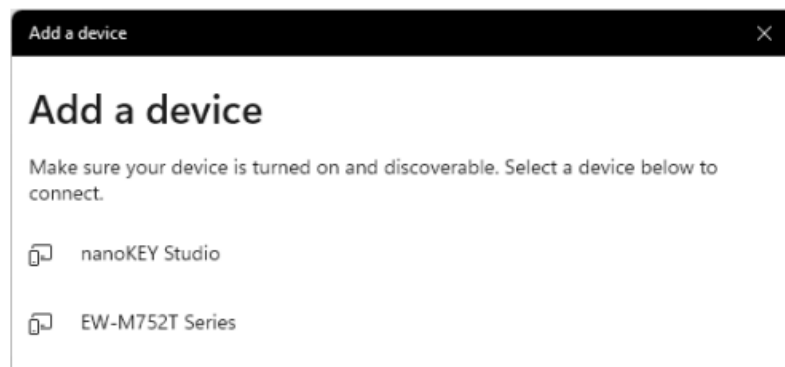
Note On Windows 10, a screen titled “Bluetooth & other devices” appears when you select “Show Bluetooth devices”. Click “Add Bluetooth or other device” and proceed to step 4.



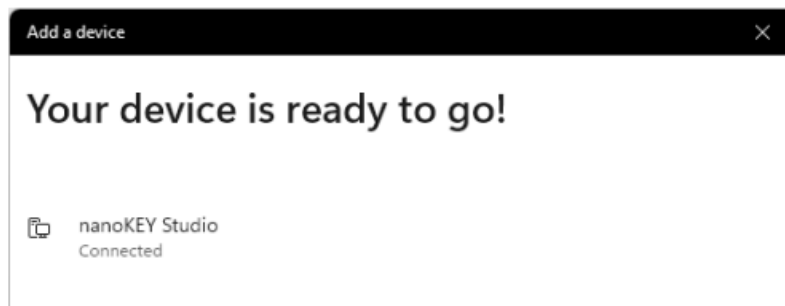
4. On the “Add a device” screen, select “Bluetooth”.



5. Select the device to use from the list that's shown.



6. When “Connected” is shown, the pairing is completed, and you can use the Bluetooth MIDI connection. Press [Done] .



7. The devices will connect when the MIDI application is launched.

Disconnection

Either quit the MIDI application or go to the Start menu, open Settings – Devices and press “Remove device”. Another way to do this: Toggle Bluetooth off in the Bluetooth dialog box from the Start menu – Settings

- Devices. To reconnect the device with Windows, switch Bluetooth ON again.

Note

- This cannot be used by multiple MIDI applications simultaneously.
- If the Bluetooth MIDI device is not connected even when you start the MIDI application, delete the Bluetooth MIDI device in the Bluetooth device management screen, and then pair the device once again. If the connection is still not established, refer to

- Sorting the registered MIDI devices” on the next page.

Sorting the registered MIDI devices

If there are more than 10 devices registered in Windows, the KORG BLE-MIDI device may not work properly. Sort the MIDI devices using the steps below, so that the KORG BLE-MIDI device is registered within the midi0–midi9 range (meaning the tenth device or less).

1. Turn off the KORG Bluetooth MIDI device that’s in use.
2. From the Start menu > KORG, select “Uninstall KORG USB-MIDI device ”. Launch the KORG MIDI Driver Uninstall Utility.



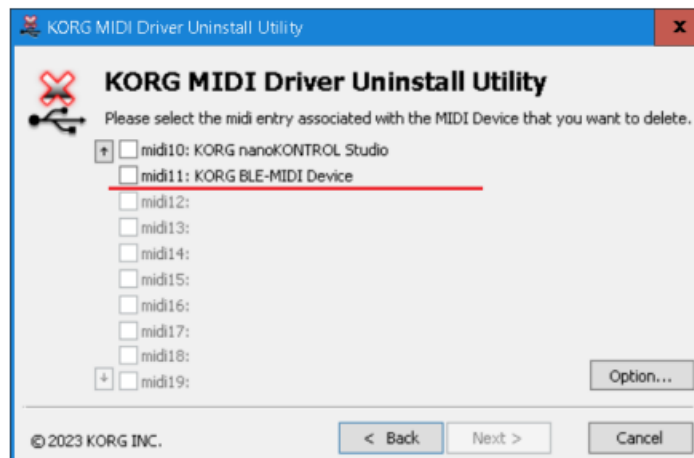
3. Click the [Next >] button. This shows a list of the MIDI devices registered on the computer. Check whether the KORG BLE-MIDI Device is registered as one of the first ten devices (midi0–midi9).

Note The MIDI devices shown depend on the computer’s OS environment.

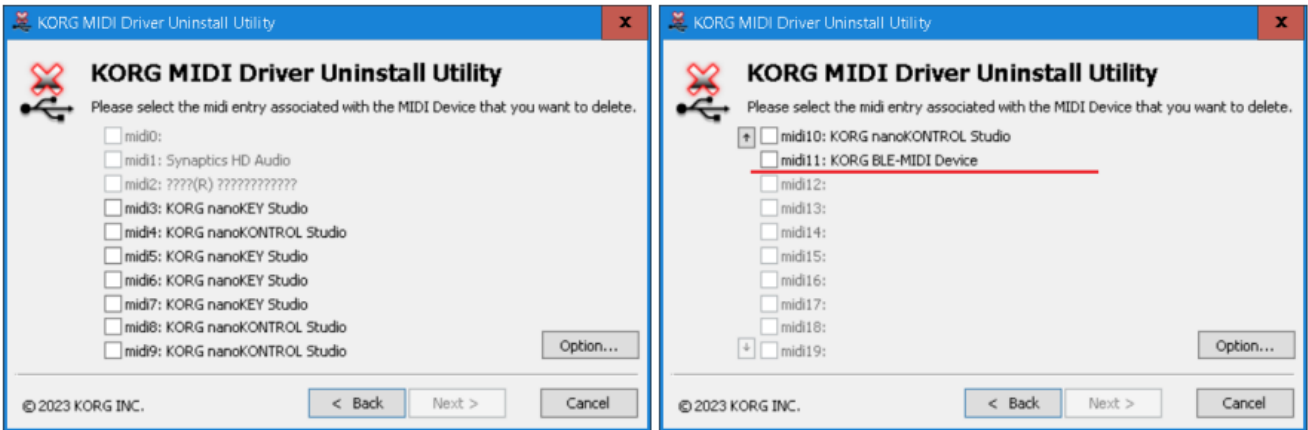
Note In Windows, a driver is set separately for each USB port, even if the MIDI device connected to those ports is the same. For this reason, when you connect a device to different USB ports, the same MIDI device will be registered multiple times.

4. The KORG BLE-MIDI Device will operate correctly if it is registered as one of the first ten devices (midi0–midi9; see the illustration below).

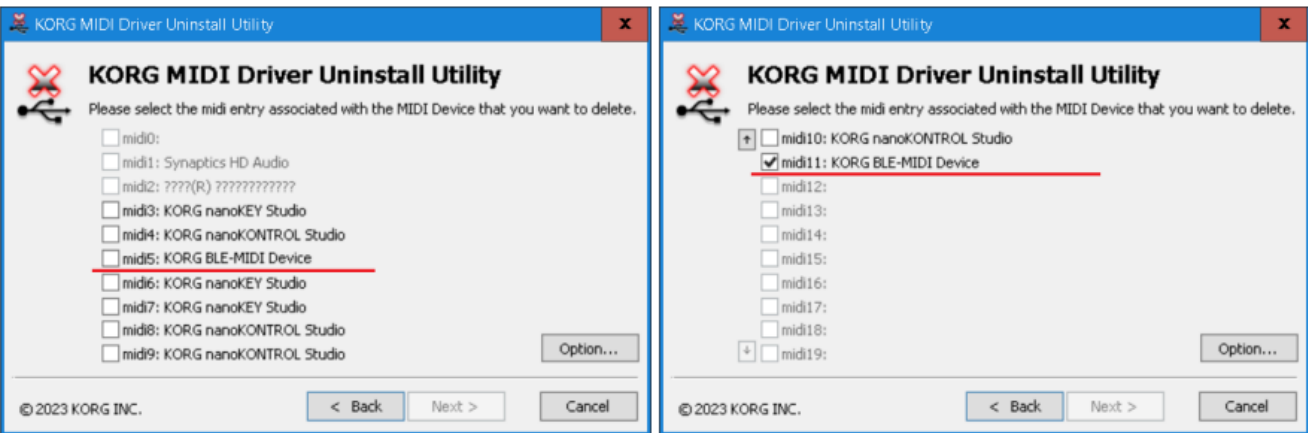
You don’t need to sort the registered MIDI devices, so you can quit the KORG MIDI Driver Uninstall Utility.



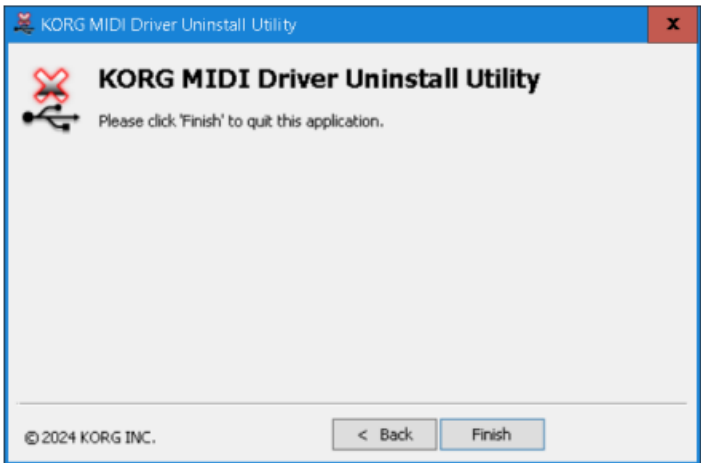
The KORG BLE-MIDI Device may not operate correctly if it isn't registered as one of the first ten devices (midi0–midi9). Proceed to step 5.



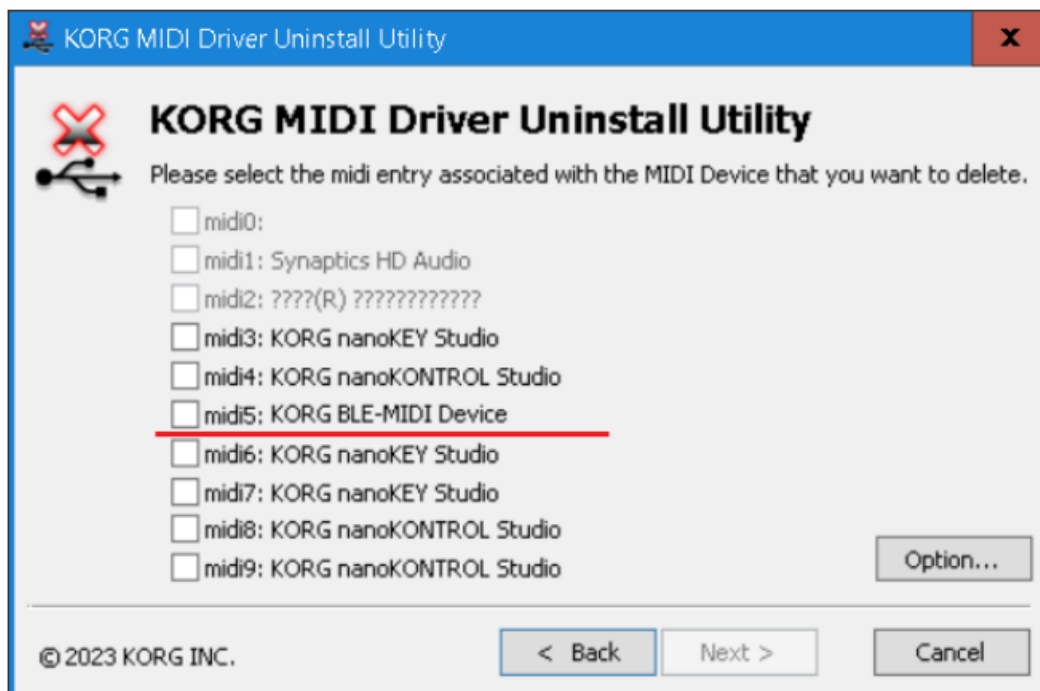
5. Select the KORG BLE-MIDI Device and the check boxes of the first ten registered devices (midi0–midi9) that you aren't using, and delete them.



Once you've deleted these items, click "Finish" and quit the KORG MIDI Driver Uninstall Utility.



6. Uninstall the KORG BLE-MIDI Driver.
- p. 11 “Uninstalling the KORG BLE-MIDI Driver”
7. Reinstall the KORG BLE-MIDI Driver.
- p. 7 “Installing the KORG BLE-MIDI Driver”
8. Go back again to step 2, launch the KORG MIDI Driver Uninstall Utility, and check whether the KORG BLE-MIDI Device has been registered as one of the first ten devices (midi0–midi9).

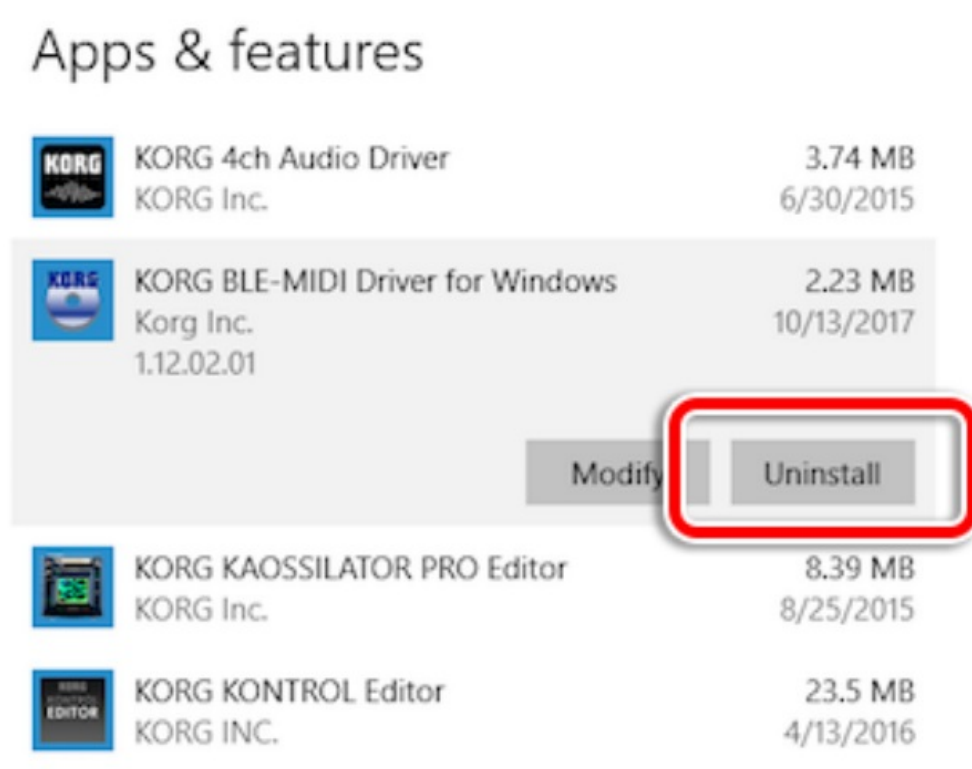


The devices may have been moved and the device slots may automatically be filled if you registered another device to the midi10 slots or higher. If this happens, repeats steps 5–7 until the KORG BLE-MIDI Device is registered in midi0–9.

9. Restart your computer if necessary.
10. Turn on the KORG Bluetooth MIDI device that you are using.

Uninstalling the KORG BLE-MIDI Driver

1. Click the Start menu > Settings > Apps.
2. A list of applications is shown. Click “KORG BLE-MIDI Driver for Windows”, and click the “Uninstall” button.



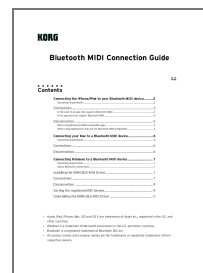
- **TIP:** For Windows 10, select “KORG BLE-MIDI Driver for Windows” in the list that’s shown when you click

“Apps” > “Apps and features”, and click the “Uninstall” button.

- **NOTE** You must have administrator privileges to install or uninstall Windows drivers. Consult with

4015-2 Yanokuchi, Inagi-City, Tokyo 206-0812 JAPAN © 2016 KORG INC.

Documents / Resources

	<p>KORG E2 Bluetooth MIDI Connection [pdf] User Guide</p> <p>E2 Bluetooth MIDI Connection, E2, Bluetooth MIDI Connection, MIDI Connection, Connection</p>
---	---

References

- [User Manual](#)

Manuals+ Privacy Policy

This website is an independent publication and is neither affiliated with nor endorsed by any of the trademark owners. The "Bluetooth®" word mark and logos are registered trademarks owned by Bluetooth SIG, Inc. The "Wi-Fi®" word mark and logos are registered trademarks owned by the Wi-Fi Alliance. Any use of these marks on this website does not imply any affiliation with or endorsement.