



# KOORUI BK0104 Wireless Keyboard Combo User Manual

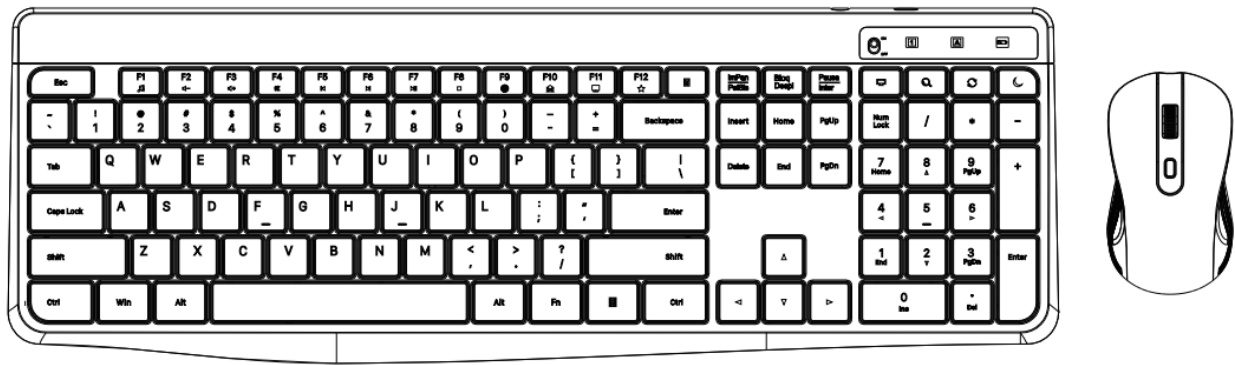
[Home](#) » [KOORUI](#) » KOORUI BK0104 Wireless Keyboard Combo User Manual 

## Contents

- 1 KOORUI BK0104 Wireless Keyboard Combo
- 2 Product Information
- 3 Features
- 4 Product Usage Instructions
- 5 BOX CONTENT
- 6 SETUP
- 7 FEATURES
- 8 CONSIDERATIONS
- 9 SOLUTION TO CONNECTION FAILURES
- 10 SOLUTION TO PROBLEMS OF WAKING COMPUTER FROM SLEEP MODE BY KEYBOARD
- 11 SOLUTION TO PROBLEMS OF WAKING COMPUTER FROM SLEEP MODE BY MOUSE
- 12 FCC Warning
- 13 CORRECT DISPOSAL OF THIS PRODUCT
- 14 FCC STATEMENT
- 15 Documents / Resources
  - 15.1 References
- 16 Related Posts

# KOORUI

**KOORUI BK0104 Wireless Keyboard Combo**



## Product Information

- **Product Name:** BK0104 & BM0104
- **Product Description:** The BK0104 & BM0104 is a versatile device that offers various features and functions.

## Features

- High-quality construction and design
- Efficient and reliable performance
- User-friendly interface
- Multiple operating modes
- Advanced technology for enhanced functionality

## Product Usage Instructions

### Power Connection:

1. Ensure that the device is unplugged before starting.
2. Locate the power input port on the device.
3. Connect the power cord to the device and the power outlet.
4. Make sure the power switch is in the “Off” position.
5. Switch on the power using the power switch.

### Basic Operation:

1. Familiarize yourself with the user interface and control panel.
2. Refer to the user manual for specific functions and buttons.
3. Use the appropriate buttons or controls to navigate through the device’s menu.
4. Follow the on-screen instructions for specific tasks or operations.

### Advanced Features:

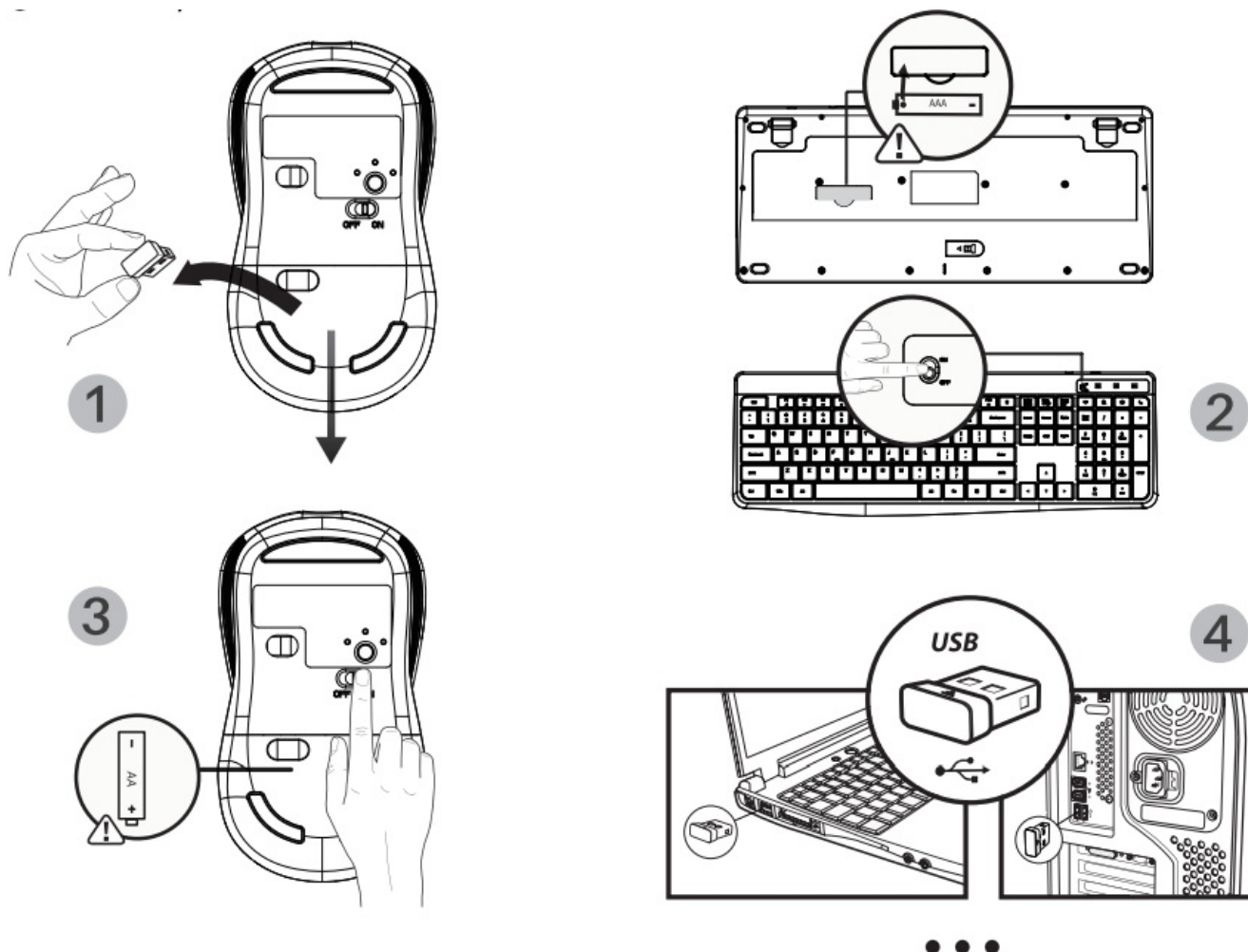
1. Access the advanced features menu using the designated button or combination of buttons.
2. Select the desired feature or mode from the menu.
3. Adjust the settings or parameters according to your requirements.
4. Refer to the user manual for detailed instructions on using advanced features.

**Note:** It is recommended to read the user manual thoroughly before operating the device to ensure proper usage and avoid any potential risks or damages.

## BOX CONTENT



## SETUP



1. Fetch the wireless keyboard and mouse. Take out the USB receiver from the mouse battery compartment.
2. Insert one 1.5 V AAA battery into the keyboard according to the positive and negative sign. And turn on the power switch of keyboard.
3. Insert one 1.5 V AA battery into the mouse according to the positive and negative sign. And turn on the power switch of mouse.
4. Plug the USB receiver into the USB port of your computer.
5. The mouse and keyboard are ready to work after the driver is installed automatically on the computer.

## INDEPENDENT MULTIMEDIA KEYS

Fn+F1=Audio Activate

Fn+F2=Volume -

Fn+F3=Volume +

Fn+F4=Mute

Fn+F5=Previous Track

Fn+F6=Next Track

Fn+F7=Play/Pause

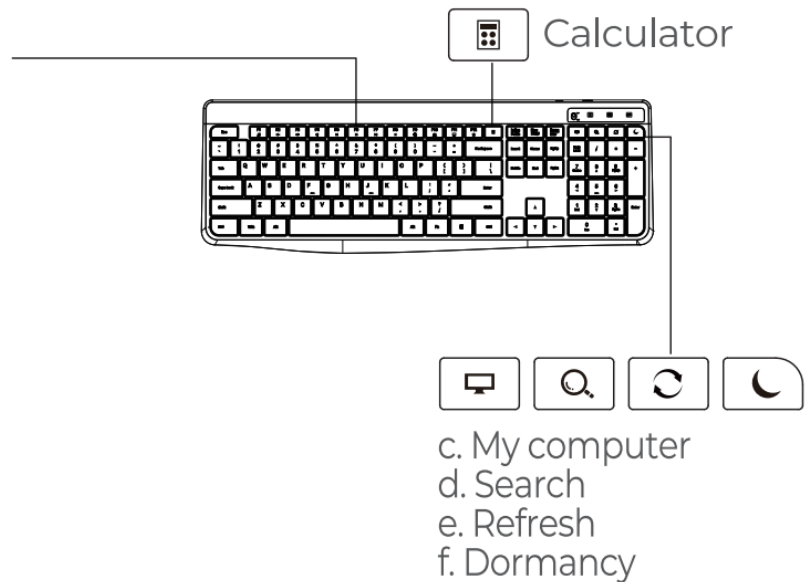
Fn+F8=Stop

Fn+F9=Start Page

Fn+F10=Email

Fn+F11=My Computer

Fn+F12=Favorites



## FEATURES

1. The mouse and keyboard share a common receiver. And the receiver is in the battery compartment at the bottom of the mouse.
2. Adjustable mouse DPI levels: 800-1200-1600 (default setting is 1200)
3. It has automatic Sleep mode and Wake up mode. When the combo hasn't been used for 8 min, it will enter sleep mode. Press any button to wake up the combo. If it will be unused for a long time, turn off the power switch to save power.
4. Compatibilities: Windows XP / VISTA / 7 / 8 / 10; Mac

**ATTENTION:** Functions of combination keys are not available on the Mac system

## CONSIDERATIONS

1. Use 1.5 V AAA or AA battery only. To prevent from damage to internal elements, avoid using excessive-voltage batteries. If the product will be unused for a long time, take out the battery to prevent from corrosion.
2. The product adopts the 2.4 GHz wireless transmission with a 10-meter transmission distance. The distance may be shortened for big obstructions and low battery.
3. For the first use, the product may fail to work (connection error etc.) for it has been unused for a long time. Try pairing again.

## SOLUTION TO CONNECTION FAILURES

### Keyboard

1. Take out the battery from the keyboard and the receiver from the computer.
2. Reinstall the battery into the keyboard, and plug the receiver into the USB port of the computer.
3. Turn on the power switch of the keyboard, which should be within 20cm away from the receiver. Press and hold "Esc]" and "K" keys together to pair again.

## Mouse

1. Take out the battery from the mouse and the receiver from the computer.
2. Reinstall the battery into the mouse, and plug the receiver into the USB port of the computer.
3. Turn on the power switch of the mouse, which should be within 20cm away from the receiver. Press and hold the Right button and Scroll button together to pair again.

## SOLUTION TO PROBLEMS OF WAKING COMPUTER FROM SLEEP MODE BY KEYBOARD

Please verify that your device is allowed to wake the computer by following steps :

1. Open the Keyboard control panel.
  - In Windows Vista or Windows 7 and later versions, Click Start, type keyboard in the Start Search box, and then click Keyboard or Microsoft Keyboard in the Programs list.
  - In Windows XP and earlier versions, click Start, click Run, type Control keyboard, and then click OK.
2. Click the Hardware tab, and then click Properties.
3. Click the Change Settings button (Note: This step requires Administrator access)
4. Click the Power Management tab, and then verify that the Allow this device to wake the computer is enabled.
5. Click OK, and then click OK again.

## SOLUTION TO PROBLEMS OF WAKING COMPUTER FROM SLEEP MODE BY MOUSE

PLEASE REFER TO ABOVE INSTRUCTION FOR KEYBOARD

More Methods for Troubleshoot problems waking computer from sleep mode, please refer to :

<https://support.microsoft.com/en-us/topic/troubleshoot-problems-waking-computer-from-sleep-mode-6cf5b22f-5111-92c3-4a28-eec6e6+908e>

## FCC Warning

- This device complies with Part 15 of the FCC Rules. Operation is subject to the following two conditions:
  1. This device may not cause harmful interference
  2. this device must accept any interference received, including interference that may cause undesired operation.
- **NOTE 1:** This equipment has been tested and found to comply with the limits for a Class B digital device, pursuant to part 15 of the FCC Rules. These limits are designed to provide reasonable protection against harmful interference in a residential installation. This equipment generates, uses and can radiate radio frequency energy and, if not installed and used in accordance with the instructions, may cause harmful interference to radio communications. However, there is no guarantee that interference will not occur in a particular installation. If this equipment does cause harmful interference to radio or television reception, which can be determined by turning the equipment off and on, the user is encouraged to try to correct the interference by one or more of the following measures:
  - Reorient or relocate the receiving antenna.
  - Increase the separation between the equipment and receiver.
  - Connect the equipment into an outlet on a circuit different from that to which the receiver is connected.
  - Consult the dealer or an experienced radio/TV technician for help.

- **NOTE 2:** Any changes or modifications to this unit not expressly approved by the party responsible for compliance could void the user's authority to operate the equipment.
- The device has been evaluated to meet general RF exposure requirement. The device can be used in portable exposure condition without restriction.

## CORRECT DISPOSAL OF THIS PRODUCT

(Waste Electrical & Electronic Equipment)

- If This Marking shown on the product or its literature, indicate that it should not be disposed with other household wastes at the end of its working life.
- To prevent possible harm to the environment or human health from uncontrolled waste disposal, please separate this from other types of wastes and recycle it responsibly to promote the sustainable reuse of material resources.
- Household user should contact either the retailer where they purchased this product, or their local government office, for details of where and how they can take this item for environmentally safe recycling.
- Business users should contact their supplier and check the terms and conditions of the purchase contract. This product should not be mixed with other commercial wastes for disposal.


## FCC STATEMENT

- Any Changes or modifications not expressly approved by the party responsible for compliance could void the user's authority to operate the equipment.
- This device complies with part 15 of the FCC Rules. Operation is subject to the following two conditions: (1) This device may not cause harmful interference, and (2) this device must accept any interference received, including interference that may cause undesired operation.

## FCC RADIATION EXPOSURE STATEMENT

This equipment complies with FCC radiation exposure limits set forth for an uncontrolled environment.

## Documents / Resources

|   |  |
|---|--|
|  | <p><a href="#">KOORUI BK0104 Wireless Keyboard Combo</a> [pdf] User Manual<br/>BK0104 Wireless Keyboard Combo, BK0104 x, BK0104 Wireless Keyboard Combo, Wireless Keyboard Combo, Keyboard Combo</p> |
|---|--|

## References

- [User Manual](#)