

Koolatron TCPUSBB600 Series Cordless Portable Blender



Koolatron TCPUSBB600 Series Cordless Portable Blender User Manual

[Home](#) » [Koolatron](#) » Koolatron TCPUSBB600 Series Cordless Portable Blender User Manual 

Contents

- [1 Koolatron TCPUSBB600 Series Cordless Portable Blender](#)
- [2 Product Information](#)
- [3 Models](#)
- [4 IMPORTANT SAFEGUARDS](#)
- [5 PARTS AND FEATURES](#)
- [6 BEFORE FIRST USE](#)
- [7 GETTING THE MOST OUT OF YOUR BLENDER](#)
- [8 INDICATOR LIGHTS AND TROUBLESHOOTING](#)
- [9 CARE AND CLEANING](#)
- [10 WARRANTY](#)
- [11 Documents / Resources](#)
 - [11.1 References](#)



Koolatron TCPUSBB600 Series Cordless Portable Blender



Product Information

Specifications

- **Model:** TCPUSBB600 series
- **Product Type:** Cordless Personal Blender
- **Dimensions:** H1S372 4/2023 – v3
- **Available Colors:** TCPUSBB600-L (Lime), TCPUSBB600-B (Black), TCPUSBB600-W (White), TCPUSBB600-Y (Yellow)

FAQ

- **Q:** Can I use the blender while it is charging?
 - **A:** No, it is not recommended to use the blender while it is charging. Please ensure it is fully charged before use.
- **Q:** Can I use any USB-C cable to charge the blender?

- **A:** It is recommended to use the included USB-C cable or an equivalent certified USB-C cable for charging to ensure compatibility and safe charging.
- **Q:** Can I sharpen the blades if they become dull?
 - **A:** No, it is not recommended to sharpen the blades. If the blades become damaged or dull, please contact an authorized service facility for examination and repair.
- **Q:** What should I do if the blender malfunctions?
 - **A:** If the blender malfunctions, stop using it and take it to the nearest authorized service facility for examination and repair.

Please Read These Instructions Carefully Before Use!

Models



IMPORTANT SAFEGUARDS

When using your Total Chef Portable Blender, basic safety precautions should always be followed,

including the following:

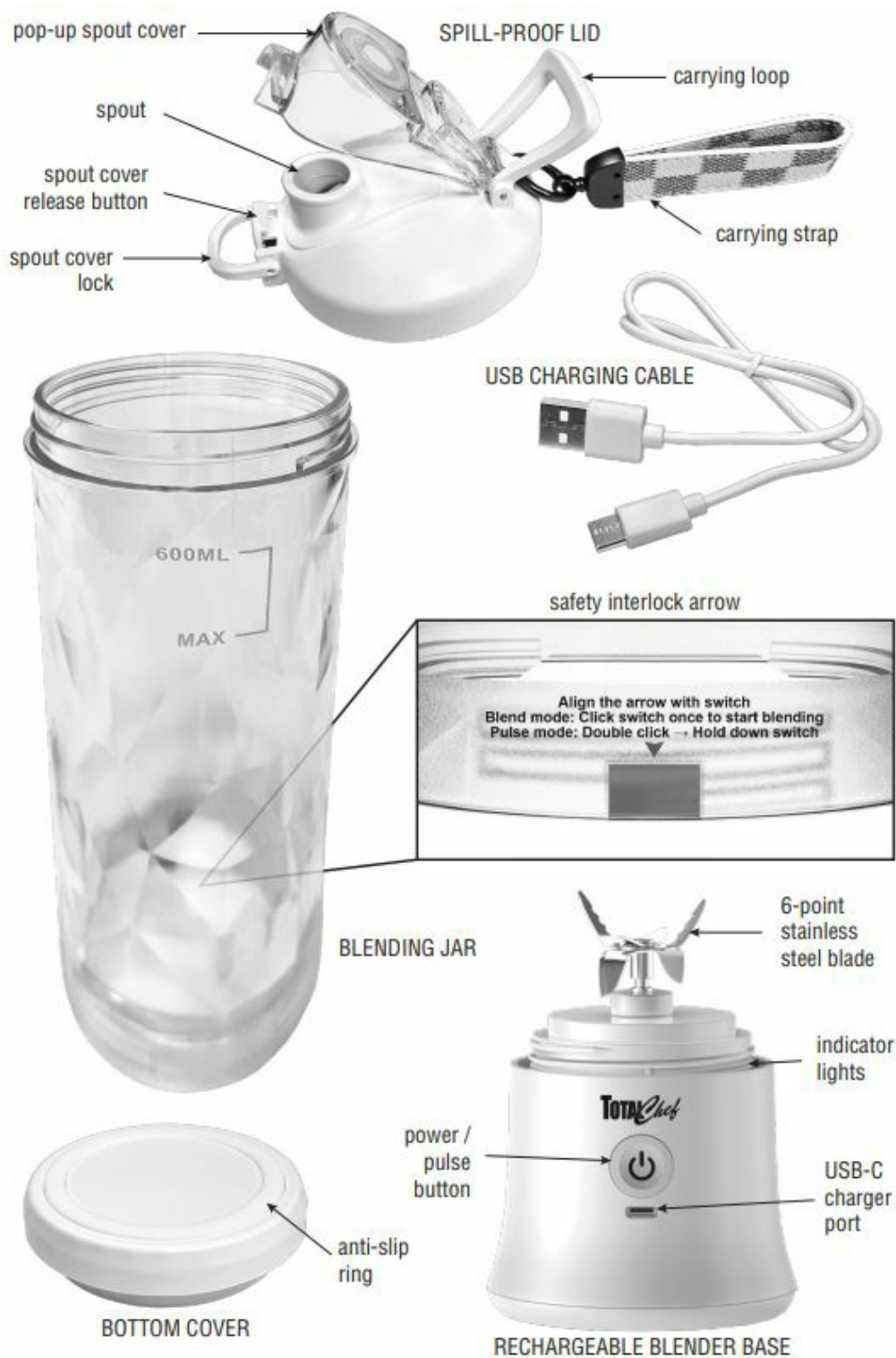
1. READ ALL INSTRUCTIONS BEFORE USE
2. Before using the blender for the first time, remove packaging material and promotional labels and safely dispose of plastic bags or small pieces that could present a suffocation or choking hazard to young children.
3. Regularly inspect the appliance and do not attempt to operate if there is damage to the USB-C charging cable or port, after it has malfunctioned or been dropped or damaged in any way, or if it is not operating properly. Take the appliance to the nearest authorized service facility for examination and repair.
4. Do not attempt to use the blender if the blades are bent or damaged in any way. Do not attempt to sharpen the blades.
5. To protect against electrical shock, do not immerse the blender base or charging cable in any liquid. Only the blending jar, lid, and bottom cover are designed for immersion in liquids for blending or cleaning.
6. Make sure that all parts of the blender are completely dry before charging.
7. Always use a high-quality USB power adapter or power bank (such as the one that came with your phone) and the included USB-C cable or equivalent certified USB-C cable to charge your blender. Ensure that the charging cable is pushed all the way into the USB-C port when charging.
8. Do not allow the blender or charging cable to come in contact with hot surfaces.
9. The blending blades are extremely sharp. Use extreme caution and avoid contact with cutting edges when handling and cleaning the blades.
10. Be very careful when handling the base without the blending jar attached. As a safety precaution, magnets in the blending jar and base must be aligned for the blender to operate. In rare cases, magnetic objects nearby can fool the base into thinking the jar is attached and allow the blades to spin if the power button is pressed.
11. Ensure that the blender is properly assembled with the lid firmly screwed on and the spout cover locked before operating. Do not leave the blender unattended during operation. Wait until the blade has completely stopped rotating and the ingredients have settled before removing the lid.
12. Do not run your blender empty as this can damage your blender motor.
13. The blades can still spin when the lid is off. To reduce the risk of personal injury and/or damage to the appliance, keep hands, hair, clothing, and utensils away from and out of the blending jar during operation. Avoid contact with moving parts at all times. Do not add solid ingredients while the blender is operating.
14. Do not blend carbonated liquids as this can cause pressure buildup in the blending jar and result in a mess, damage to the blender, and/or personal injury.
15. Do not blend MCT oil or MCT oil powder as it can damage the blender over time.
16. Avoid exposing the blender to extreme temperatures. Do not put the blender in the freezer or microwave or attempt to sanitize it with hot water above 80°F (26°C). Do not blend hot liquids as this could damage the blender and/or cause personal injury.
17. Empty and clean your blender as soon as possible after using. Food or liquids left in the blender for extended periods can ferment and cause pressure buildup in the jar resulting in mess, damage, and/or injury.
18. Clean the blender using the cleaning instructions provided in this manual. Do not use any abrasive cleansers or scouring pads that could scratch the blender's surface. Do not clean any parts or accessories in the dishwasher.
19. This appliance is not intended for use by persons, including children, with reduced physical, sensory or mental capabilities, or lack of experience and knowledge, without supervision and instruction by a person responsible for their safety. Children should be supervised to ensure they do not play with the appliance.
20. Using this appliance for anything other than its intended use (non-commercial household food preparation) will

void your warranty.

21. For any maintenance other than cleaning, call Koolatron Customer Assistance.

SAVE THESE INSTRUCTIONS

PARTS AND FEATURES



BEFORE FIRST USE

READ THESE INSTRUCTIONS THOROUGHLY AND SAVE FOR FUTURE REFERENCE.

- Carefully unpack the blender from its packaging and check that all parts are present. Remove any promotional labels but do not remove the safety interlock arrow sticker. Safely dispose of plastic bags or small pieces that could present a suffocation or choking hazard.
 - **NOTE:** The blending blades are extremely sharp. Use extreme caution and avoid contact with cutting edges when handling and cleaning the blades.
- Wipe the blender base with a clean, damp cloth to remove any dirt or dust. Do not immerse the blender base or USB-C charging cable in any liquid. Carefully wash the blending jar, lid, and bottom cover in warm water with a mild dish detergent, rinse, and dry thoroughly. Do not use abrasive cleansers or scouring pads.
- Assemble the blender and plug the charging cable into a USB power adapter or power bank. Charge for approximately 3-5 hours until fully charged.

USING YOUR PORTABLE BLENDER

1. Carefully place the blending jar on the blender base and rotate clockwise until the safety interlock arrow is directly over the power button.
2. Fill the blending jar no higher than the MAX marking with small pieces of solid ingredients such as fresh or frozen fruits and vegetables, ice cubes, or yogurt.
3. Add liquid ingredients such as juice, water, kefir, or milk to the blending jar up to the 600 mL marking.
4. Place the lid on the jar and rotate clockwise until the spout lock is aligned over the power button. Tilt the blender gently from side to side to make sure no ingredients are stuck under the blades.
5. Blend, gently tilting the blender from side to side as needed to help combine the ingredients.
 - **BLEND MODE:** Press the power button once to start the blending cycle. The power button will illuminate and all of the green LED indicators will flash as the blender runs continuously. After 30 seconds the blending cycle will end and the blender will automatically shut off. Pressing the power button at any time during the cycle will pause operation; once paused the blender will automatically shut off after 5 seconds of inactivity.
 - **PULSE MODE:** Press the power button twice to enter pulse mode. Yellow LED indicators will flash on alternating sides for 1-2 seconds and then stay on. While the yellow LEDs are on, press and hold the power button to blend for up to 30 seconds and release to stop. After 5 seconds of inactivity, pulse mode will automatically end and the blender will shut off.
6. Your portable blender comes with a bottom cover that lets you use the blending jar as a lightweight travel cup. To use, blend your smoothie or shake and then turn the blender upside down, carefully unscrew the base and set aside. Place the cover on the blending jar, rotate clockwise to tighten, and turn the jar right-side up.

GETTING THE MOST OUT OF YOUR BLENDER

- Cut firm or frozen foods into 1/2"-1" pieces to prevent jamming the blades or overloading the motor.
- If the blender stops mid-cycle, the mixture may be too thick or pieces too large. Add more liquid or use a utensil (not your fingers!) to carefully remove large pieces and cut them in half or quarters.
- Protect the blades by using a rubber or plastic spatula to scrape down the sides of the jar, never metal. Always stop the blender before inserting any kind of utensil.
- Store the blender with the lid off to prevent odors from building up

INDICATOR LIGHTS AND TROUBLESHOOTING

INDICATOR	MEANING
Red lights or no lights on; blender does not start	Battery is depleted. Charge blender for 3-5 hours.
Flashing red lights; blender does not start	Blender jar is not correctly attached. Realign the blender jar on base and tighten.
Red lights flash for 8 seconds; blender stops working.	Motor overload protection. Add liquid, cut ingredients into smaller pieces, and/or switch to Pulse Mode.
Yellow lights flashing or on.	Pulse mode is active
No lights	1-17% battery charge
2 green lights on	18-33% battery charge
4 green lights on	34-50% battery charge
6 green lights on	51-67% battery charge
8 green lights on	68-83% battery charge
10 green lights on	84-99% battery charge
All green lights on	Battery fully charged

CARE AND CLEANING

Always clean the blender thoroughly after using it. To simplify the cleaning process, rinse the blending jar immediately after use to prevent food from drying in it.

SELF CLEAN FUNCTION

Fill the blending jar 2/3 full with warm (not hot) water and add a drop of mild dish soap. Attach the lid, checking that the spout cover is locked, and press the power button to blend for one full cycle. Pour out the liquid, rinse with clean water, and dry thoroughly. Use extreme caution when drying the blades to avoid injury.

BLENDER BASE AND BOTTOM COVER

Wash the bottom cover in warm water with mild dish soap, rinse, and dry thoroughly. To clean the outside of the blender base, wipe the surface with a damp sponge or cloth, using a small amount of mild dish soap if needed. Do not use abrasive cleaners that could scratch the surface and do not immerse the base in water.

DEEP CLEANING

Even with regular cleaning, strong odors and colors from ingredients may start to linger in your blender. Occasional deep cleaning can help combat developing smells and stains, especially in the sealing rings on the lid and bottom cover.

1. Disassemble the blender base, jar, and lid, using extreme caution when handling the base without the blending jar attached.

2. Use a fork or a butter knife to carefully pry the sealing rings from the inside of the lid and the bottom cover. Use your fingers to remove the rubber gasket from the spout cover. Take note of which sealing ring goes where.
NOTE: Do not attempt to remove the sealing ring from the blender base as it is glued down to protect the LED indicators.
3. Wash the blending jar, lid, bottom cover, sealing rings, and gasket in warm water with mild dish soap. Rinse and allow all parts to fully air dry.
4. For stubborn odors or stains, pre-treat the sealing rings and gasket before washing by soaking for 15 minutes in white vinegar or 3% hydrogen peroxide or applying a paste of baking soda and water.
5. When parts are completely dry, reassemble the blender. Replace the sealing rings, making sure the ring in the bottom cover is grooved side down. Use the tip of a spoon to press them into place if needed. Replace the rubber gasket in the spout cover, pressing firmly while rotating the cover.

WARRANTY

Koolatron Corporation warrants that this product will be free from defects in materials or workmanship under normal household use for a period of 1 year from the date of retail purchase. During this time, defective products will be repaired or replaced at the discretion of the retailer and/or Koolatron Corporation. This warranty covers normal household usage and does not cover damage which occurs in shipment or results from accident, misuse or abuse, unauthorized repair or alteration, improper maintenance, commercial use, or use with a voltage converter or aftermarket accessories. A Koolatron Master Service Centre must perform all warranty work.

WARRANTY AND SERVICE PROCEDURE

Keep your original, dated, sales receipt with this manual. If this product proves to be defective within the warranty period, please contact Koolatron Corporation at 1-800-265-8456 (North America) or email service@koolatron.com for assistance.


Register online at www.koolatron.com and add another 6 months of warranty protection.

www.koolatron.com

©2023 Koolatron, Inc. All rights reserved.

All specification are subject to change without notice.

Documents / Resources

	Koolatron TCPUSBB600 Series Cordless Portable Blender [pdf] User Manual H1S372 4-2023 - v3, TCPUSBB600-L, TCPUSBB600-B, TCPUSBB600-W, TCPUSBB600-Y, TC PUSBB600 Series Cordless Portable Blender, TCPUSBB600 Series, Cordless Portable Blender , Portable Blender
-------------------------------------------------------------------------------------	--------------------------------------------------------------------------------------------------------------------------------------------------------------------------------------------------------------------------------------------------------------------------------------------

References

- [Koolatron | Global Leader in Thermoelectric Products](#)
- [User Manual](#)

Manuals+. Privacy Policy

This website is an independent publication and is neither affiliated with nor endorsed by any of the trademark owners. The "Bluetooth®" word mark and logos are registered trademarks owned by Bluetooth SIG, Inc. The "Wi-Fi®" word mark and logos are registered trademarks owned by the Wi-Fi Alliance. Any use of these marks on this website does not imply any affiliation with or endorsement.