

KOOL NXW-5586 Wii Controller



# KOOL NXW-5586 Wii Controller User Guide

[Home](#) » [KOOL](#) » KOOL NXW-5586 Wii Controller User Guide 

## Contents

- [1 KOOL NXW-5586 Wii Controller](#)
- [2 Product Features](#)
- [3 Remote specification](#)
- [4 Connecting instruction](#)
- [5 Operation supply current](#)
- [6 FCC Requirement](#)
- [7 Documents / Resources](#)
  - [7.1 References](#)
- [8 Related Posts](#)



## KOOL NXW-5586 Wii Controller



## Product Specifications

- **Item:** Wii Controller
- **Model No.:** NXW-5616
- **User Guide:** V1.0

## Remote Specification

- **13 Digital buttons:** Front – Power, D-Pad (up, down, left, right), A, [+], Home, [-], 1, 2. Back – B, SYNC.
- **4 Player LED:** Displays player's login sequence.
- **Wireless:** Connects remote and console through wireless communication.
- **COMS sensor:** Detects infrared light from sensor bar, provides light-spot movement info and Wireless target movement info. Supports sensitivity switching function for console.
- **Sound module:** Converts sample sound info from Wii console to speaker for sound output.
- **Power supply:** Requires 2 AA dry batteries or battery pack.
- **Motor:** Provides vibration sensing feedback function.
- **Speaker Extension terminal:** For sound output and connecting compatible peripheral devices like Nunchuck.

## Connecting Instructions

1. Ensure the remote and console are within range.
2. Press the SYNCRO button on the remote to synchronize with the console.
3. Follow console-specific instructions for further setup if required.

## Low Power Indication

1. If the connection indicator flashes rapidly, it indicates low power.
2. When low voltage alarm occurs, replace the batteries promptly to avoid performance issues.

## Electrical Performance Specifications

- **Working Voltage:** 2.5-3.0V
- **Working Current:** 70-130mA
- **Vibrating Current:** 80-200mA
- **Standby Current:** 50-150uA
- **Sound Distance Range:** (Not specified in the manual)

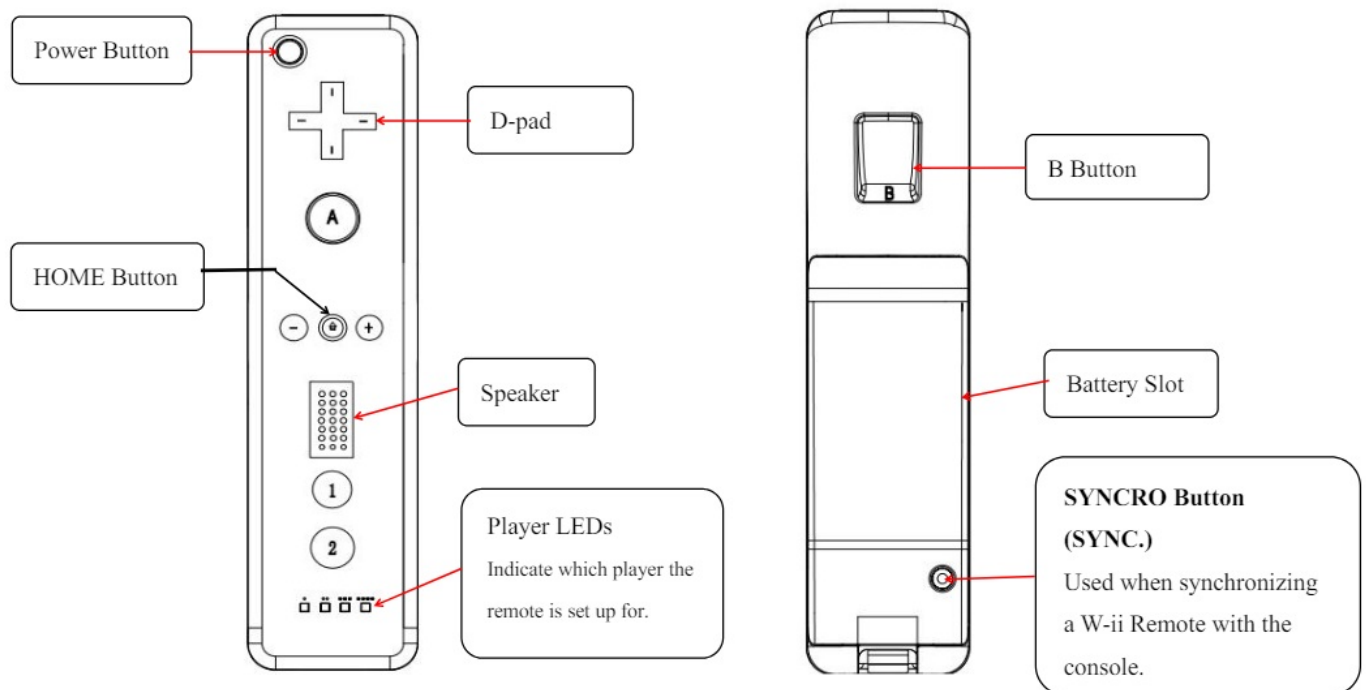
## Frequently Asked Questions (FAQ)

- **Q: How do I sync the Wii remote with the console?**  
A: Press the SYNCRO button on the remote and follow the console's synchronization process.
- **Q: What do I do if the low power indication flashes?**  
A: Replace the batteries immediately to prevent any handling issues due to insufficient voltage.

## wii controller

Model No.: NXW-5616

User Guide (V1.0)



## Product Features

1. Compatible with w-ii and w-U consoles.
2. Wireless connection, the maximum control distance is 8m.
3. Built-in COMS sensor, used to detect infrared light from the sensor bar, obtain light spot movement information, provide wireless target movement information and support the sensitivity switching function of the w-ii console.
4. The built-in sound module is used to transmit the inductive sound from the w-ii console to the speaker.
5. Built-in speaker outputs sound.
6. Built-in motor provides vibration function.
7. Power supply requires 2 AA dry batteries or battery packs.
8. With expansion terminals for connecting nunchakus or other compatible peripherals.

## Remote specification

Item	Description
13*Digital buttons	<b>Front:</b> Power, D-Pad (up, down, left and right), A, [+], Home, [-], 1 and 2. Back: B and SYNC.
4*Player LED	Display player's login sequence.
1*Wireless	Connect remote and console through Wireless wireless communication.
1*COMS sensor	<ul style="list-style-type: none"> <li>• Detect infrared light from sensor bar, obtain light-spot moving info and provide</li> <li>• Wireless target movement info. Support sensitivity switching function for console.</li> </ul>
1*Sound module	Convert sample sound info from w-ii console to speaker to output sound.
1*Power supply	2*AA dry batteries or battery pack are needed for power supply.
1*Motor	Provide vibration sensing feedback function.

1*speaker	For sound output.
*Extension terminal	For connecting nunchuck and other compatible peripheral devices.

## Connecting instruction

1. First connect power supply for w-ii console and also connect sensor bar and AV cable.
2. Install 2\*AA dry batteries in remote.
3. There is a red color code pair button "SYNC" in the back of the remote, press the SYNC button, the four LED indicators in the front of the remote will be blinking quickly sufficient battery power is needed).
4. Press code pair button on the w-ii console for code pair (after synchronization, the No. 1 LED indicator in the remote will be solid bright).
5. Adjust the position of the sensor bar (position of cursor).
6. Read U-disk or DVD using the remote (Connect a nunchuck to the remote to read games).

## low power indication

1. Low power indication: The connection indicator will flash rapidly, and the low voltage alarm indication function, the LED will flash quickly when the voltage is insufficient;
2. When the low voltage alarm occurs, replace the battery with a new one in time to eliminate the abnormal handle caused by insufficient voltage.

## Electrical performance specifications

Working voltage	2.5 3.0V
Working current	70-130mA
Vibrating current	80-200mA
Standby current	50-150uA
Sound distance range	<8m (under the condition without any obstacle block)
Cursor distance	<3m
size and weight:	149*36.8*33mm, net weight: 80g.

## Operation supply current

1. Please don't store this product in damp or high temperature places;
2. Do not knock, beat, throw or drop this product so as not to damage it unnecessarily;
3. Unauthorized or non-professional personnel are not allowed to disassemble this product, otherwise it won't be in the scope of after-sales warranty.

## FCC Requirement

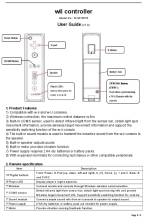
changes or modifications not expressly approved by the party responsible for compliance could void the user's authority to operate the equipment.

This device complies with Part 15 of the FCC Rules. Operation is subject to the following two conditions:

1. This device may not cause harmful interference, and
2. This device must accept any interference received, including interference that may cause undesired operation.

**Note:** This equipment has been tested and found to comply with the limits for a Class B digital device, pursuant to Part 15 of the FCC Rules. These limits are designed to provide reasonable protection against harmful interference in a residential installation. This equipment generates, uses, and can radiate radio frequency energy, and if not installed and used in accordance with the instructions, may cause harmful interference to radio communications. However, there is no guarantee that interference will not occur in a particular installation.

- If this equipment does cause harmful interference to radio or television reception, which can be determined by turning the equipment off and on, the user is encouraged to try to correct the interference by one or more of the following measures:
  - Reorient or relocate the receiving antenna.
  - Increase the separation between the equipment and receiver.
  - Connect the equipment into an outlet on a circuit different from that to which the receiver is connected.
  - Consult the dealer or an experienced radio/TV technician for help.



[KOOL NXW-5586 Wii Controller \[pdf\] User Guide](#)  
NXW-5586 Wii Controller, NXW-5586, Wii Controller, Controller

References

- [User Manual](#)

[Manuals+.](#) [Privacy Policy](#)

This website is an independent publication and is neither affiliated with nor endorsed by any of the trademark owners. The "Bluetooth®" word mark and logos are registered trademarks owned by Bluetooth SIG, Inc. The "Wi-Fi®" word mark and logos are registered trademarks owned by the Wi-Fi Alliance. Any use of these marks on this website does not imply any affiliation with or endorsement.