



Contents [[hide](#)]

- [1 Konix ED01 Dynamic Portable Electronic Drum](#)
- [2 Function introduction](#)
- [3 Features:](#)
- [4 -Accessories:](#)
- [5 Device connecting map](#)
- [6 Function description](#)
- [7 Product function description:](#)
- [8 USB MIDI function](#)
- [9 Product specifications](#)
- [10 FCC Statement](#)
- [11 Documents / Resources](#)
 - [11.1 References](#)



Konix ED01 Dynamic Portable Electronic Drum

**Dear Customer:**

Thanks for buying our portable drum kit.

We are specialized in developed and manufactured of portable drum kit and portable pianos for over 15 years. This drum is very light and very easy to carry,in order to bring the best use effect of the product,please use it strictly in accordance with the instructions and precautions-May you enjoy it.

Thanks for your cooperation.

Function introduction

1. pads:(Includes crash cymbal,ride cymbal,open/close hi-hat,snare,high tom,lowtom,low floor tom)
2. Two pedals:(Includes 1 Hi-hat, 1 bass drum) 2.30 demos, 16 drum sounds
3. Volume control: 15 levels
4. Speed control:30-250 levels
5. Record the notes and playback
6. Audio input,can connect with phone,iPad,computer and other electronic device for music format input
7. With dual stereo speakers

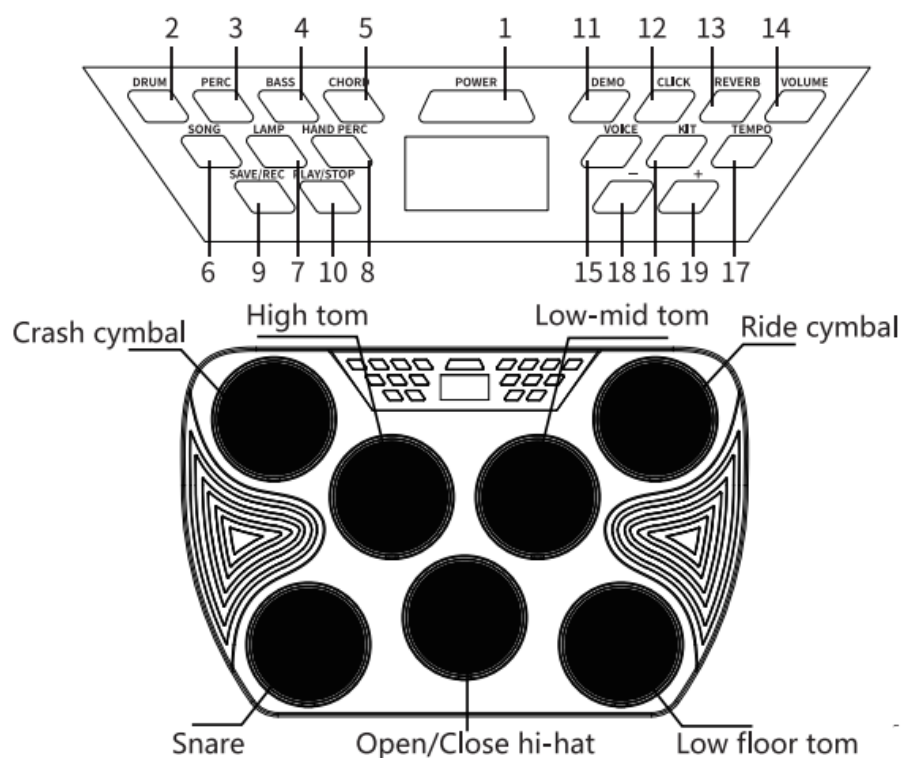
Features:

1. The world's first Multinational,portable and professional drum
2. Fit for family entertainment/friends gathering/and drum practice
3. Multi-sounds,simulated the really drum kits
4. The standard drum configuration and the extension interface for pedal could bring you real game experience about drum Includes accompaniment/demo song,control the playing speed free,this is the best choice for drum learning
5. Includes recording function,get all your inspiration in record easily
6. With two high-quality stereo speakers
7. Audio input,chose any music you like to practice
8. Could connect with the earphone,will not disturb anyone when you using
9. Support to connect the extra speaker,the sounds will be more shocking
10. USB MIDI port,connect computer to play with all the MIDI software and electronic drum games,MIDI software like:Sonar,Cubase,Nuendo, EZdrummer.(Only for MIDI version)

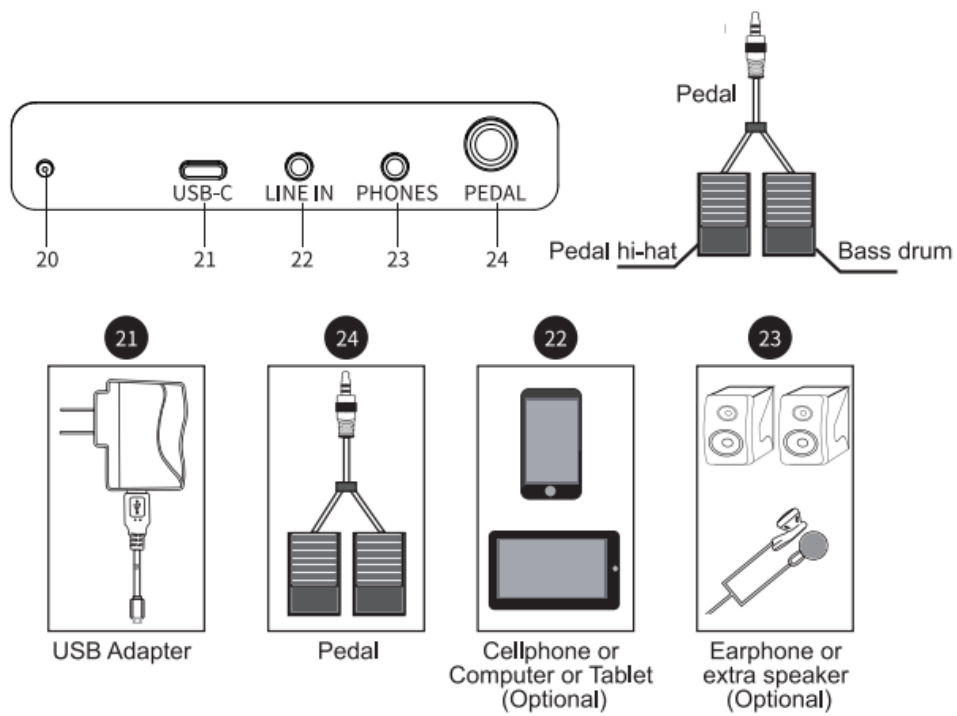
-Accessories:

Drum kit* 1 ,Pedal*1 ,Drum stick*2,Manual*1 ,USB cable* 1 ,Adapter*1

The appearance of drum kit



Device connecting map



Function description

No.	Name	Function Description
1	POWER	Power switch button
2	DRUM	Drum track button
3	PERC	Sub drum track button
4	BASS	Bass drum track button
5	CHORD	Chord drum tack button
6	SONG	Audio track switch button
7	LAMP	Drum lamp button
8	HAND PERC	Tambourine mode button
9	SAVE/REC	Save/Record button
10	PLAY/STOP	Play/Stop button
11	DEMO	Demo button
12	CLICK	Metronome button
13	REVERB	Reverb button
14	VOLUME	Volume button
15	VOICE	Voice button
16	KIT	Style button
17	TEMPO	Tempo button
18	-	Decrease button
19	+	Increase button
20	○	Power indicator
21	USB-C	USB interface
22	LINE IN	Audio input interface
23	PHONES	Audio output interface
24	PEDAL	6.35 pedal interface

Product function description:

1. ON/OFF button

1. Press “POWER”button to open,default drum kit function,the light lights,the screen displays “01” tone number,drum light flashing,can be used after Bluetooth voice prompts.
2. Without any action on the device,power off automatically in about 5minutes,need

to restart the device for normal use.

3. Button with light, light is on means the corresponding function is turned on, otherwise, the corresponding function is turned off.

2. Increase/Decrease button

Default is the drum kit selection, press “+” or “-” to select the drum kit, can be used with other function button, long time press can quickly select.

3. Track switch button

Press “PERC” “BASS”

“CHORD” the audio track button is turned on by default, button light is on, press any audio track to turn off or turn on the corresponding play sound. This function is effective when the demo is playing.

4. Drum track button ”

DRUM ” is the main drum track to turn on or turn off the music playing. Firstly press “DEMO” into music playing, repress “SONG” button, finally press “DRUM” button to turn on or turn off the music playing of the main drum track.

5. Sub drum track button

PERC” is the sub drum track to turn on or turn off the music playing. Music playing in the demo, press “SONG” button, repress “PERC” button to turn on or turn off the music playing of the sub drum track.

6. Chord track button ”

CHORD” is the chord track to turn on or turn off the music playing. Music playing in the demo, press “SONG” button, repress “CHORD” button to turn on or turn off the music playing of the chord track. The chord track here refers to the chord tones in the music.

7. Reverb button

Built-in 30 levels reverb effect, adjustment range from 0-30, press “REVERB” button, the screen displays “00”, which means the default level is 0 when is on, repress “+” or “-” button to select the reverb level, the number is bigger, the reverb effect is bigger, this reverb function is to increase the timbre effect.

8. Tambourine mode button

Increase drum sensitivity, do not need the drum stick to play, user can play it with their hand.

Press “HAND PERC” tambourine mode button, the default is the African drum kit, the screen displays the different drum tones through “+” or “-”.

9. Drum lamp button

1. Press "LAMP" button,once playing the corresponding pad,at this time,the drum lamp is shining.When you play which pad,the lamp will be shining of this pad;repress "LAMP" button to turn off the lamp effect.
2. During music playing,press "LAMP",at this time, the drum pad light flashes with the corresponding drum pad following the music playback,repress "LAMP" button turn off the lamp effect.

10. Demo button

1. With 30 demos,repress "DEMO" button,the screen displays "01 ",the demo song plays automatically.Repress it to turn off this function.
2. In demo plays mode,press "+" or "-" to select cyclically.
3. Repress "DEMO" to turn off this function.
4. Demo function can be mixed with the audio track switch function,more details review "SONG"function introduction.

11. Metronome button

Press "CLICK" button,automatically play default number of beats,the screen displays "2-4",built-in five selections (2-4,3-4,4-4,3-8,6-8).

12. Record/Play function button

Press "SAVE/REC" button,the screen displays "REC" ,play pad can record,re- press this button stop recording,can press "PLAY/STOP" button to play or stop.

13. Voice button

Built-in 15 percussion sources in every pad,press "VOICE"button,play the corresponding drum pad,then press "+" or "-" to select the tones you need,and replay,the screen displays the currently selected tone number;after choosing your favorite tone,press "SAVE/REC" button till the screen displays "SAV" means save this drum tone to the previous drum tones of 16 number.It is for user drum tone,increase the use of experience effects and personalized cts. Remark:High tom,low-mid tom and low floor tom is the same drum tone,can not change single pad.

14. Style button

Built-in 15 drum styles,the default style is fist one when is on,press "KIT" button,repress "+" or "-" to select the style you like. Remark:the 15th is the African drum sound,can be played in tambourine mode.

15. Volume button

The default volume is 10 level when is on,the screen displays biggestis 15 level,the smallest is 0,press "VOLUME" button,repress "+" or to adjust the volume.

16. Tempo button

The default tempo is 120 level when is on,the screen will displays a number which is the tempo of the corresponding tone tempo you select,the biggest is 250 level,the smallest is 30 level,press “TEMPO” button,reprress “+” or “-” to adjust it.

17. Reset

Press “PLAY/STOP” button for longtime,the screen displays “RES”,means to restore the factory default state.

18. Sleeping mode

Without any action on the device,power off automatically in about 5 minutes,need to restart the device for normal use.

19. Low battery reminder

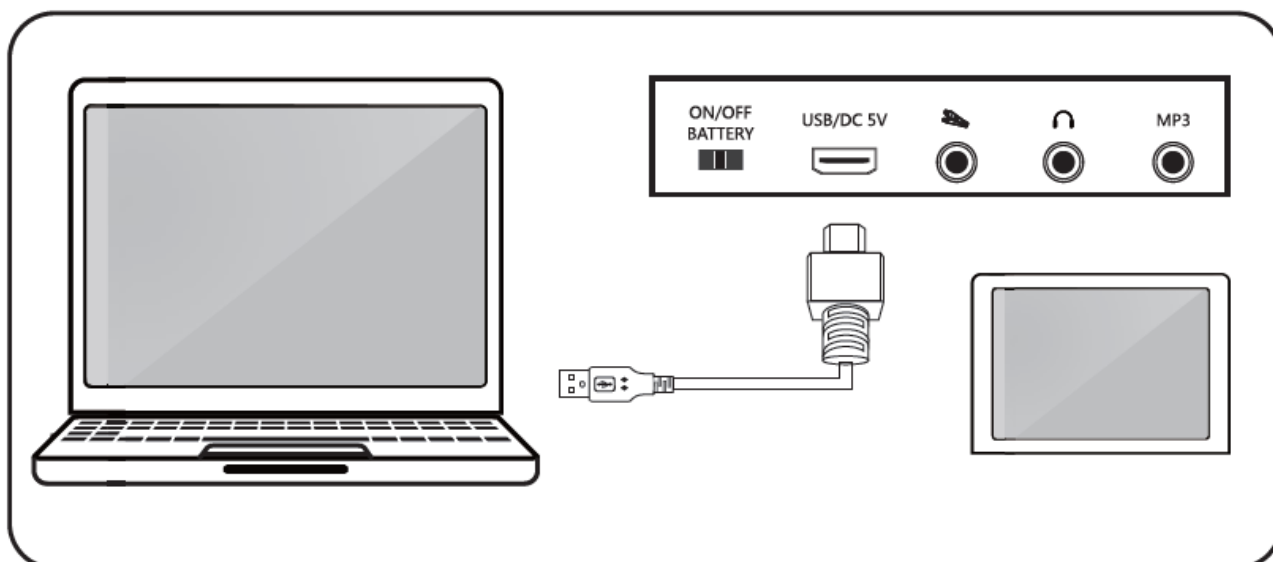
The red light is on when charging,fully charged red light off.When the battery power is low, the digital tube flashes slowly,please charge the battery in time.

Pedal input

1. This drum supports one Hi-hat pedal and the other is bass drum pedal,both pedals are mono input. close Hi-hat when you play;when you inject the pedal in jack,step on the
2. Pedal and play “Open/Close hi-hat,sound will be close hi-hat;do not step on the pedal,play it the sound will be open hi-hat.
3. Inject the pedal to the “FOOT PEDAL” jack,one is for bass drum function,step on the pedal,sound will be bass drum,release without sound;if you need bass drum when you playing,you have to step on the specified pedal.

USB MIDI function

1. When you completely connecting the USB cable between the drum kit and computer, MIDI data could be transmitted well.
2. If you need this function,please finish below step carefully:
 - Please use the standard USB cable to connect the computer to the drum;
 - Compatible with Win XP/Vista/7/8 and Mac OSX,drive free and hot plug supporting;
 - Compatible with Sonar,Cubase,Nuendo, Ezdrummer,Etc,major sequencer software and VST/VSTi and all kinds of MIDI drum kit games.



Bluetooth MIDI function (Only for the products with Bluetooth MIDI function)

1. Install DTX2020 in your phone or tablet;
2. Turn on the Bluetooth and location service functions in your phone or tablet;
3. Search the blue-tooth name “Music DRUM” in your phone or tablet then connect;
4. Open DTX2020 in your phone or tablet,to find the “Bluetooth” button in the upper right corner of the homepage,search the Bluetooth name “MIDI DRUM” then connect;
5. Download the different songs and games on the DTX2020 homepage,then can play or practise.

Simple troubleshooting

Failure phenomenon	Reason	Solution
The power indicator does not light up	The external power supply is not plugged in	Please check that the cable is connected properly
Abnormal sound	Insufficient external power supply voltage	Change the adapter
No response to pedal	The plug is not in place	Need to be fully inserted or rotated
Headphones or speakers are silent	The plug is not in place, not the correct jack,the audio volume is not adjusted properly	Need to be fully inserted or rotated,check the jack if correct,adjust the sound volume

Precautions

1. Please pay attention to the file format when using external equipment to input audio

source;

2. Please do not put the electronic drum in an overheated or dusty place to work;
3. Please keep a distance from the radio, TV and other strong electromagnetic equipment to avoid interference when placing;
4. Do not put heavy objects on the electronic drum machine to avoid impact;
5. Please do not put the electronic drum in humid or overheated place to avoid damage;
6. Do not store or collide sharp objects with the electronic drum to avoid damage.

Product specifications

1. Product size:
2. Input voltage: USB 5V/2A
3. Material: ABS+Silicon

FCC Statement

This equipment has been tested and found to comply with the limits for a Class B digital device, pursuant to part 15 of the FCC Rules. These limits are designed to provide reasonable protection against harmful interference in a residential installation.

This equipment generates, uses and can radiate radio frequency energy and, if not installed and used in accordance with the instructions, may cause harmful interference to radio communications. However, there is no guarantee that interference will not occur in a particular installation. If this equipment does cause harmful interference to radio or television reception, which can be determined by turning the equipment off and on, the user is encouraged to try to correct the interference by one or more of the following measures:

- Reorient or relocate the receiving antenna.
- Increase the separation between the equipment and receiver.
- Connect the equipment into an outlet on a circuit different from that to which the receiver is connected.
- Consult the dealer or an experienced radio/TV technician for help.

Caution: Any changes or modifications to this device not explicitly approved by manufacturer could void your authority to operate this equipment.

This device complies with part 15 of the FCC Rules. Operation is subject to the following two conditions:

1. This device may not cause harmful interference, and
2. This device must accept any interference received, including interference that may cause undesired operation.

RF Exposure Information


The device has been evaluated to meet general RF exposure requirement. The device can be used in portable exposure condition without restriction.

Documents / Resources

	Konix ED01 Dynamic Portable Electronic Drum [pdf] Instruction Manual 2AX4N-ED01, 2AX4NED01, ED01 Dynamic Portable Electronic Drum, E D01, Dynamic Portable Electronic Drum, Portable Electronic Drum, Electr onic Drum, Drum
--	-------------------------------------------------------------------------------------------------------------------------------------------------------------------------------------------------------------------------------------------------------

References

- [User Manual](#)

 KONIX
 2AX4N-ED01, 2AX4NED01, DRUM, Dynamic Portable Electronic Drum, ED01, ED01 Dynamic Portable Electronic Drum, Electronic Drum, KONIX, Portable Electronic Drum

Leave a comment

Your email address will not be published. Required fields are marked *

Comment *

Name

Email

Website

☐ Save my name, email, and website in this browser for the next time I comment.

Post Comment

Search:

e.g. whirlpool wrf535swhz

Search

[Manuals+](#) | [Upload](#) | [Deep Search](#) | [Privacy Policy](#) | [@manuals.plus](#) | [YouTube](#)

This website is an independent publication and is neither affiliated with nor endorsed by any of the trademark owners. The "Bluetooth®" word mark and logos are registered trademarks owned by Bluetooth SIG, Inc. The "Wi-Fi®" word mark and logos are registered trademarks owned by the Wi-Fi Alliance. Any use of these marks on this website does not imply any affiliation with or endorsement.