



Contents [[hide](#)]

- [1 KONG 33010002 2 Speed Cordless Clipper](#)
- [2 Product Specifications](#)
- [3 Product Usage Instructions](#)
 - [3.1 Cleaning and Maintenance](#)
- [4 IMPORTANT SAFETY INSTRUCTIONS](#)
- [5 OPERATING INSTRUCTIONS](#)
 - [5.1 BEFORE FIRST USE](#)
- [6 CLEANING / MAINTENANCE](#)
 - [6.1 REMOVING AND INSTALLING ACCESSORIES](#)
 - [6.2 CLEANING AND MAINTENANCE](#)
- [7 COMB ATTACHMENTS](#)
- [8 FCC STATEMENT](#)
- [9 LIMITED THREE-YEAR WARRANTY](#)
- [10 ABOUT COMPANY](#)
- [11 FAQ](#)
- [12 Documents / Resources](#)
 - [12.1 References](#)



KONG 33010002 2 Speed Cordless Clipper



Product Specifications

- **Item:** 13476
- **Model:** 33010002
- **Product Name:** GROOMMASTER 2-SPEED CORDLESS-CORDED CLIPPER KIT
- **Speeds:** 2 speeds
- **Blades:** Stainless steel blades
- **Accessories:** USB Cable Charger, Blade Oil, Blade Cover, Blade Brush, Comb Attachments

Product Usage Instructions

Cleaning and Maintenance

Blade Cleaning and Maintenance:

1. Ensure the device is turned off and unplugged before cleaning.
2. Use the cleaning brush to remove loose hair from the blade.
3. Rinse the blade under running water while attached to the clipper body for quick cleaning.
4. For a thorough cleaning, remove the blade from the body.
5. Apply one drop of oil to the specified areas on the blade for maintenance.

6. Reinstall the blade after maintenance.

Blade Disassembly and Installation:

1. To disassemble the blade, press the lock key and pull it away from the body.
2. Clean and disinfect the blade if necessary.
3. To install the blade, hold the lock key, slide the blade into the slot at connection A, and press down firmly until you hear a click.

Charging and Operating Instructions:

1. Before first use, charge the battery using the provided USB cable charger.
2. Ensure the device is turned off when not in use.
3. Use comb attachments for trimming as needed.

Body Cleaning and Maintenance:

Refer to the instructions provided in the Blade Cleaning and Maintenance section for cleaning and maintaining the clipper body.

IMPORTANT SAFETY INSTRUCTIONS

When using electrical devices, basic safety precautions should always be followed:

1. Read all instructions before using this device.
2. For household use only.
3. Use this device only for trimming/clipping as described in this instruction manual. Do not use it for other purposes.
4. To reduce the risk of electrical shock do not immerse the unit, plug, or cord in water or other liquids.
5. This device is not intended for use by persons (including children) with reduced physical, sensory, or mental capabilities, or lack of experience and knowledge unless they have been given supervision or instruction concerning the use of the appliance by a person responsible for their safety.
6. Children should be supervised to ensure that they do not play with the device.
7. Unplug from the wall outlet when not in use and charging is complete when moving

the device from one location to another, before putting on or taking off parts, and before cleaning. To disconnect, grip the plug and pull the charger from the outlet.

8. Avoid contact with moving parts.
9. Do not operate in the presence of explosive and/or flammable fumes.
10. To avoid the risk of fire, NEVER place the charging cable under rugs or any parts near an open flame, cooking, or other heating appliance.
11. Do not operate the device with a damaged cord or plug, after the device malfunctions, or has been dropped/damaged in any manner. Discard or contact customer service.
12. Do not run the charging cable under the carpeting. Do not cover the cable with throw rugs, runners, or similar coverings. Do not route cable under furniture or appliances. Arrange cable away from high traffic areas and where it will not be tripped over.
13. The use of attachments not recommended or sold by the appliance manufacturer may cause injuries.
14. Do not let the cable hang over the edge of a table, or counter or come in contact with hot surfaces, including the stove.
15. WARNING: To reduce the risk of fire or electric shock, do not use this device with any solid-state speed control device.
16. It is recommended to keep the device stored or charged in a room with an ambient temperature between 41°F and 104°F.
17. Use only the provided charging cable and charger. Use of non-listed / non-certified parts may cause damage to the device and void the warranty. For spare and replacement parts, please contact customer service.
18. When the device is being charged, the battery indicator will display the current level. When fully charged, it is recommended to disconnect from the power source. Continuous overcharging can shorten the life of the battery.
19. Use battery-operated devices only with specifically designated and integrated battery types. The use of any other batteries may create a risk of fire.
20. Do not incinerate this device even if it is severely damaged. The batteries can explode in a fire. Never incinerate or dispose of batteries in a fire.
21. The battery must be removed from the device before it is disposed of.
22. The device must be disconnected from the power supply when removing the battery.
23. The battery is to be disposed of safely.

WARNING: To recharge the battery, only use the detachable supply unit M29US provided with this device.

24. IPX5 for clipper only.

NOTE: THIS UNIT CONTAINS LI-ION BATTERY. BATTERY MUST BE RECYCLED OR DISPOSED PROPERLY. CHECK LOCAL AUTHORITY REGULATIONS. NEVER INCINERATE OR DISPOSE OF BATTERIES IN A FIRE.

PLEASE READ AND SAVE THESE IMPORTANT SAFETY INSTRUCTIONS FOR HOUSEHOLD USE ONLY

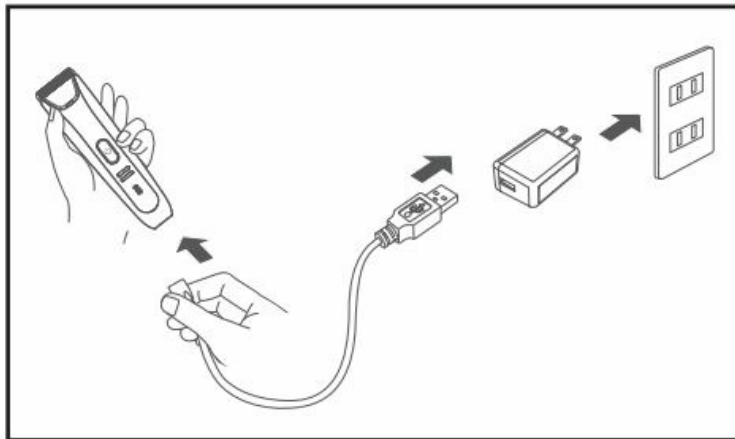
OPERATING INSTRUCTIONS

BEFORE FIRST USE

CHARGING THE BATTERY

1. Charge the battery for at least 90 minutes before the first use.
2. Insert the charging cable into the device charging port. Connect the USB to the charger.
3. Plug the charger into a standard 120V outlet.
 - The battery can be charged at any time and any power level.
 - A full charge provides up to 2 hours of use.

NOTE: The clipper can be used while charging

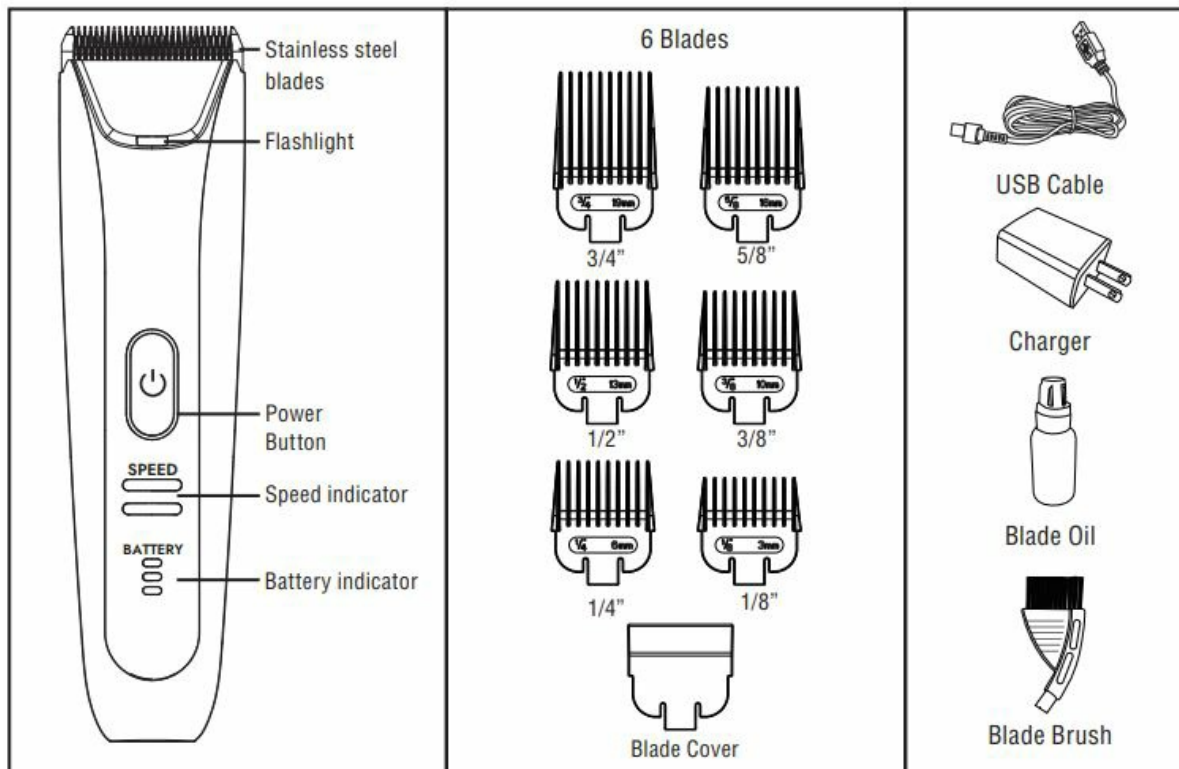


OPERATING INSTRUCTIONS

- Press and hold the Power Button for approximately 1.5 seconds to turn the device ON to speed 1. Use caution as the blade will now be in operation. Once the device is ON, the Flashlight, Power Indicator Light, and LED screen will be illuminated. Quick press the power button to toggle between the 2 Speed Settings and OFF. All indicator lights and screens will turn OFF when the device is successfully turned OFF.

- **NOTE:** To turn the Flashlight ON/OFF, press the Power Button for 1.5 seconds when the device is turned ON.

NOTE: If the blade becomes clogged during clipping, all the lights will flash for 3 seconds and the unit will turn off. Refer to the Cleaning and Maintenance section to clean the blade before continuing to use the clipper.

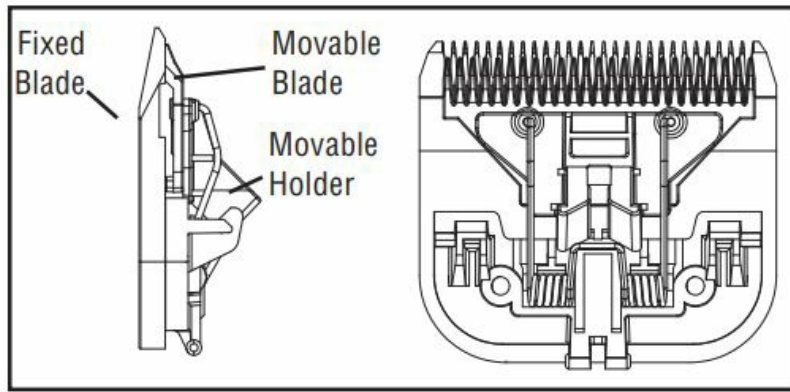


CLEANING / MAINTENANCE

REMOVING AND INSTALLING ACCESSORIES

NOTE: Before attaching or removing the G blade or combs, ensure the device is off and unplugged from the charger.

NOTE: Use caution when attaching and detaching the blade. It is recommended to wash and/or disinfect after each use. If the blade becomes damaged, stop using g and contact customer service regarding a replacement.



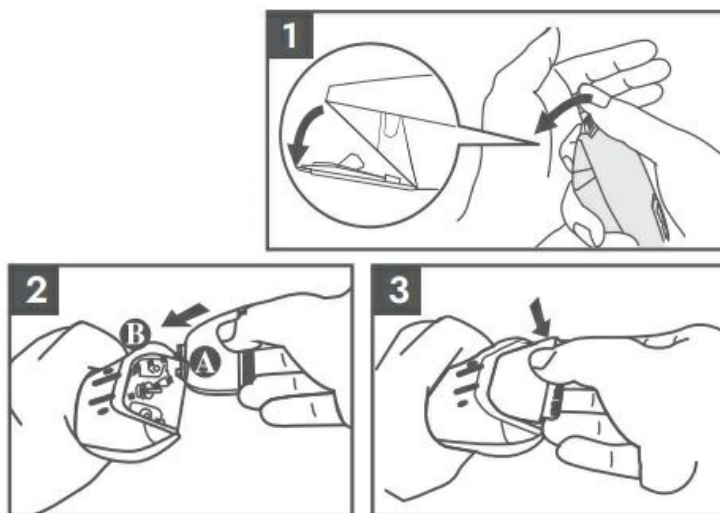
Blade Disassembly

Press the lock key (refer to Fig. 1) and pull the blade away from both sides (refer to Fig. 2).

Note: Hold the blade while disassembling to avoid dropping and potentially damaging the blade.

Blade installation

Press and hold the lock key (refer to Fig.1) while sliding the blade into that B at connection A (Fig.3); Once aligned, press down firmly on the back of the blade. A “click” noise will be heard indicating the blade was successfully installed.



CLEANING AND MAINTENANCE

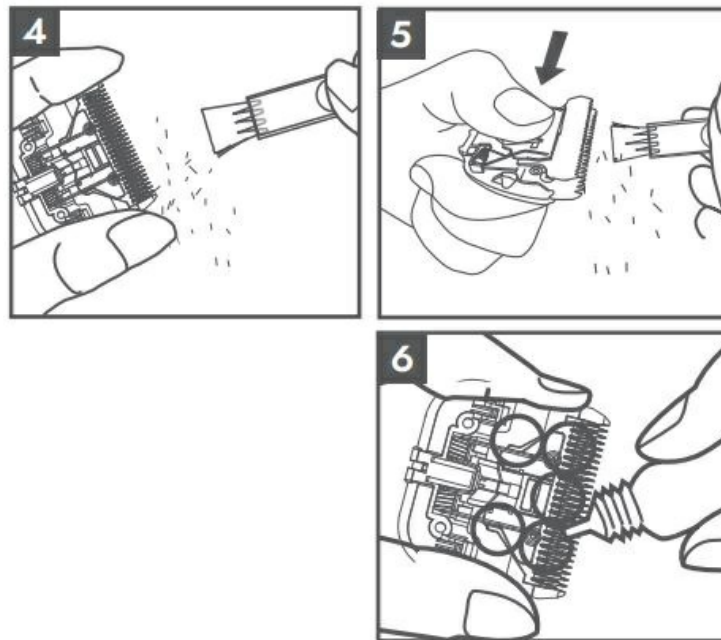
Blade Cleaning and Maintenance

NOTE: Ensure the device is turned off and unplugged from the charger before cleaning and maintenance.

- Cleaning the blade: Use the cleaning brush to remove any loose hair on the blade

(Fig. 4). The blade assembly can be rinsed under running water while attached to the clipper body for a quick clean. For a deeper more thorough cleaning, it is recommended to remove the blade from the body.

- Refer to the Cleaning and Maintenance section below.
- Maintenance of the blade: When the blade is removed from the device, place one drop of oil in each of the circled areas in Figure 6. Gently push the Movable Holder (C) to evenly distribute the oil. The blade can now be re-installed.



NOTE:

1. Do not remove any parts of the blade assembly as this could render the blade inoperable.
2. After each use, and while the device is OFF and unplugged from the charger, it is recommended to brush away any loose hairs from the blade. If a lot of hair has accumulated between the blade and the body of the clipper, rinse the blade under running water, then dry thoroughly. If some hair remains, it is recommended to remove the blade and clean with water.
3. For optimal performance and to extend the life of the blade, it is recommended to oil the blade after each cleaning. The service life of the blade is related to the frequency of use, the quality of the hair being trimmed and the maintenance.

NOTE: When replacing the blade, please contact our customer service, and do not use incompatible blades from other manufacturers.

NOTE: During an extended clipping session or working through thick hair, the blade

may feel slightly warm. This is normal and does not impact the functionality of the clipper.

Body Cleaning and Maintenance

NOTE: Turn this device OFF and disconnect the charger before cleaning and maintenance.

1. After each use, it is recommended to use the brush to sweep away any remaining hair fragments on the clipper.
2. Use a soft damp cloth to clean the body of the clipper.

Note: DO NOT USE gasoline, alcohol, thinner, or other corrosive chemical agents.

3. After cleaning the body of the clipper, wipe with a dry cloth, add lubricating oil to the blade head, and store it in a dry place. It is recommended to store in the provided carrying case.

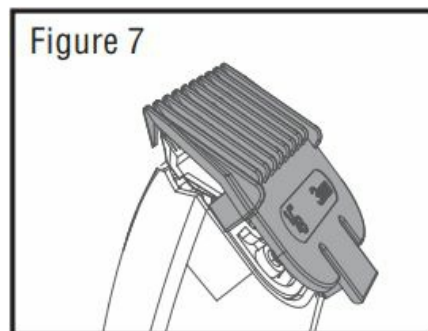
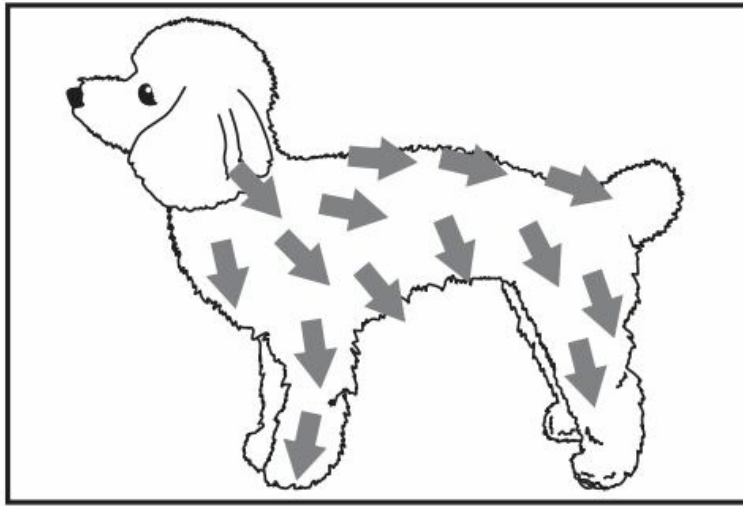
COMB ATTACHMENTS

Use Comb Attachments for trimming

The provided comb attachments can be used to extend the cutting length of the hair. It is recommended to start with the highest length comb (19mm) and work down until the desired length is achieved. To attach the comb, hold the clipper body with the blade facing upwards. Gently push the comb onto the blade until it clicks into place. (Fig. 7)

NOTE: The clipper can be used without comb attachments but should be used with caution. When no comb attachments are used, the length of the hair will be approximately 1mm. Be sure to move slowly and do not push the blade directly on the skin to avoid injuries.

NOTE: For best results, hair should be dry when cutting. Wet hair will increase the difficulty of cutting and may reduce the sharpness and effectiveness of the blade.



FCC STATEMENT

Potential for Radio/Television interference

This device complies with Part 15 of the FCC Rules. Operation is subject to the following two conditions:

1. This device may not cause harmful interference
2. this device must accept any interference received, including interference that may cause undesired operation.

This product has been tested and found to comply with the limits for a Class B digital device, pursuant to part 15 of the FCC rules. These limits are designed to provide reasonable protection against harmful interference in a residential installation. The product generates, uses, and can radiate radio frequency energy and, if not installed and used according to the instructions, may cause harmful interference to radio communications. However, there is no guarantee that the interference will not occur in a particular installation. If the product does cause harmful interference to radio or television reception, which can be determined by turning the product on or off, the user is encouraged to try to correct the interference by one or more of the following

measures:

- Reorient or relocate the receiving antenna.
- Increase the separation between the product and the receiver.
- Connect the product to an outlet on a circuit different from that to which the receiver is connected.
- Consult the dealer or an experienced radio/TV technician for help.
- Changes or modifications not expressly approved by the party responsible for compliance could void the user's authority to operate the equipment.

LIMITED THREE-YEAR WARRANTY

What is Covered and How Long Does Coverage Last

At KONG, we stand behind our products and quality controls. The KONG clipper (the "Product") has a limited warranty of 3 years from the original date of purchase in the United States or Canada from an authorized seller for the original purchaser against materials and/or workmanship defects, subject to the limitations outlined in this warranty.

What is Not Covered

- KONG reserves the right to deny warranty requests in its sole and absolute discretion if it determines that any problem was caused by normal wear and tear (other than Product blade malfunction under normal use as noted below), misuse, accident (including spilled liquid), theft, alteration, improper or unauthorized repair, or improper storage. Consequential, indirect, special, punitive, and incidental damages are not recoverable under this warranty, including, but not limited to, any loss of use.
- Should the Product's blade malfunction under normal use, then KONG's sole and exclusive obligation will be to provide one blade replacement during the three-year warranty period.

What KONG will do

- This warranty is limited to repair or replacement on an exchange basis, as selected by KONG, in KONG's sole and absolute discretion, of the Product, which, upon examination by KONG, is deemed to have been defective when the Product left the

factory. KONG may also choose to refund the purchase price, less depreciation, of the Product when, in KONG's sole and absolute discretion, the situation calls for such.

- If replacement is required by this warranty and the defective Product has been discontinued or is unavailable, KONG reserves the right to select and supply a similar Product or offer full credit for the Product to the original authorized seller; Otherwise, the same Product will be supplied for replacement to the original authorized seller from whom the original purchase was made.

How to Obtain Warranty Service

If you have any problems with the Product, please do not contact or return the Product to the original authorized seller. Instead, please contact KONG's customer service as follows:

- **Website:** <https://www.kongpetcare.com>
- **Email:** info@Kongpetcare.com
- **Phone:** 1-[866-769-3166](tel:866-769-3166) (8:30 am – 5:00 pm EST) Monday -Friday

How State Law Relates to This Warranty

This warranty is governed by Delaware law without regard to conflicts of law principles. This warranty gives you specific legal rights, and you may also have other rights which vary from state to state. TO THE EXTENT PERMITTED BY LAW, THE FOREGOING WARRANTY IS EXCLUSIVE AND IS GIVEN AND ACCEPTED INSTEAD OF ANY AND ALL OTHER WARRANTIES AND REPRESENTATIONS, EXPRESS, IMPLIED, OR STATUTORY, WHETHER WRITTEN OR ORAL, INCLUDING WITHOUT LIMITATION ANY IMPLIED WARRANTIES OF MERCHANTABILITY, FITNESS FOR A PARTICULAR PURPOSE OR TRADE USAGE, AND THE REMEDIES OF THE PURCHASER SHALL BE LIMITED TO THOSE PROVIDED HEREIN. Some states do not allow limitations as set forth above, so the above limitation may not apply to you. The total cumulative liability to KONG, from all causes of action and all theories of liability, will be limited to and will not exceed the purchase price of the Product paid by you.

Environmental Protection and Recycling

The battery installed in the electric clipper contains substances that may be harmful to the environment. The device should be disposed of according to local environmental regulations. Never incinerate or dispose of batteries/device into a fire.

ABOUT COMPANY

- SEK010 – 022825
- Made in China
- www.kongpetcare.com

FAQ


- **What is covered by the limited warranty?**

The limited warranty covers materials and/or workmanship defects of the KONG clipper for 3 years from the original date of purchase in the United States or Canada from an authorized seller for the original purchaser.

- **How should I clean the blade?**



Use the cleaning brush to remove loose hair, rinse under running water for quick cleaning, and apply oil to specified areas for maintenance. For detailed steps, refer to the Blade Cleaning and Maintenance section above.

Documents / Resources

	KONG 33010002 2 Speed Cordless Clipper [pdf] Instruction Manual 33010002, 33010002 2 Speed Cordless Clipper, 33010002, 2 Speed Cordless Clipper, Cordless Clipper, Clipper
---	---

References

- [User Manual](#)

 2 Speed Cordless Clipper, 33010002, 33010002 2 Speed Cordless Clipper, Clipper, Cordless Clipper,
 KONG KONG

—

Leave a comment

Your email address will not be published. Required fields are marked *

Comment *

Name

Email

Website

☐ Save my name, email, and website in this browser for the next time I comment.

Post Comment

Search:

e.g. whirlpool wrf535swhz

Search

[Manuals+](#) | [Upload](#) | [Deep Search](#) | [Privacy Policy](#) | [@manuals.plus](#) | [YouTube](#)

This website is an independent publication and is neither affiliated with nor endorsed by any of the trademark owners. The "Bluetooth®" word mark and logos are registered trademarks owned by Bluetooth SIG, Inc. The "Wi-Fi®" word mark and logos are registered trademarks owned by the Wi-Fi Alliance. Any use of these marks on this website does not imply any affiliation with or endorsement.