



# konect CUL 37800 2-Way Motorized Extension Socket Instruction Manual

[Home](#) » [konect](#) » konect CUL 37800 2-Way Motorized Extension Socket Instruction Manual 

## Contents

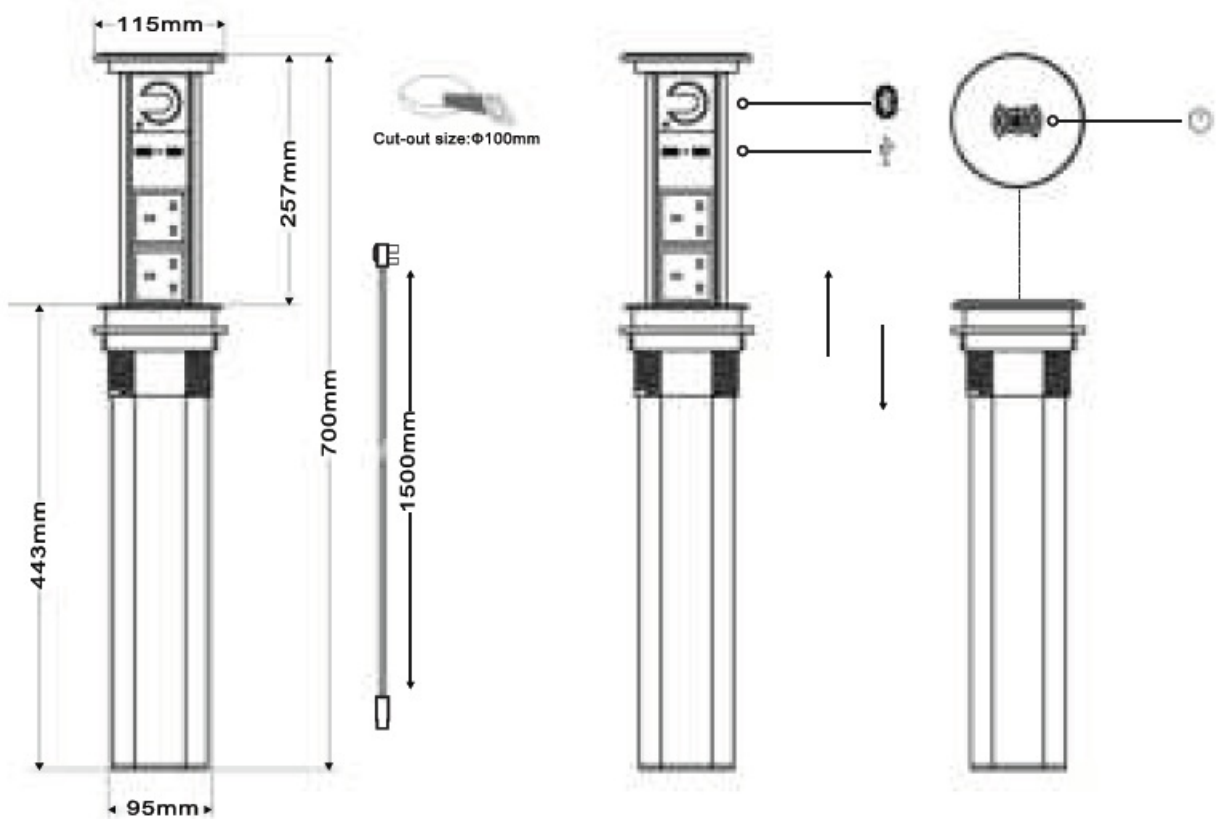
- [1 konect CUL 37800 2-Way Motorized Extension Socket](#)
- [2 Product Dimensions](#)
- [3 Installation Guide](#)
- [4 Technical Parameters](#)
- [5 How to use the product](#)
- [6 Documents / Resources](#)
- [7 Related Posts](#)



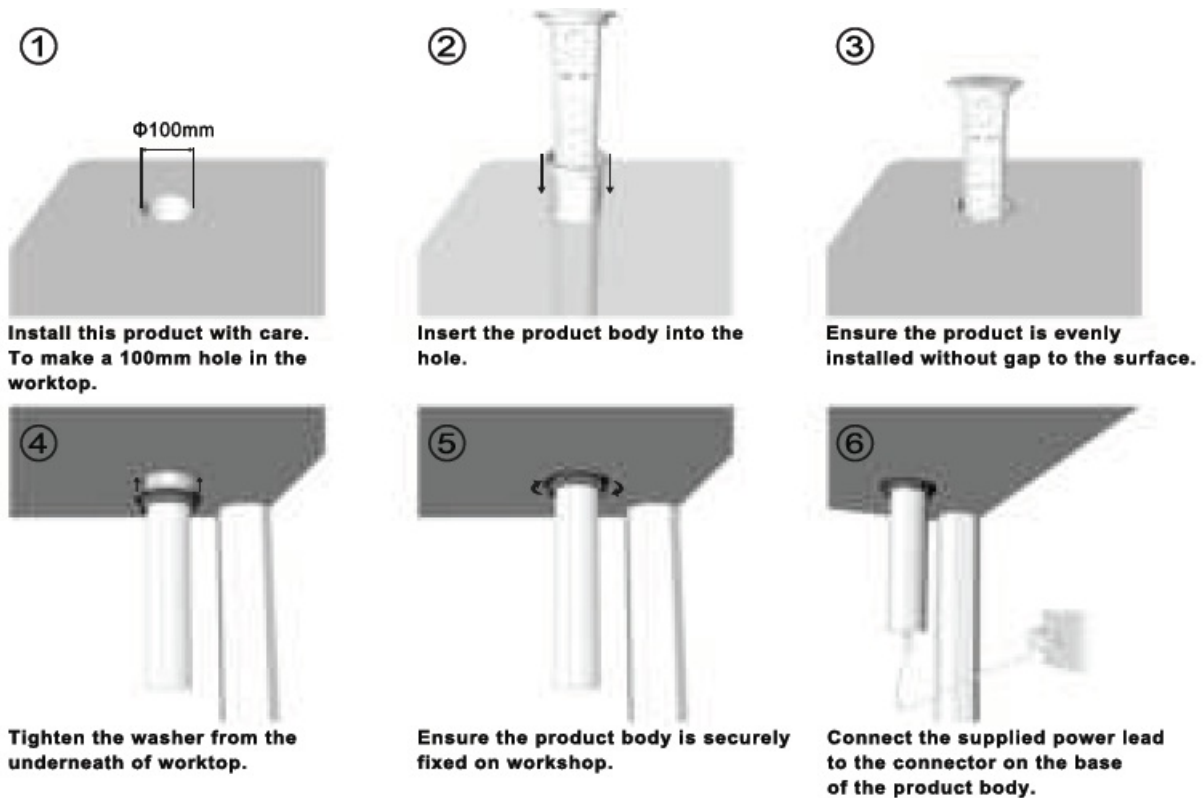
**konect CUL 37800 2-Way Motorized Extension Socket**



## Product Dimensions



## Installation Guide



## Technical Parameters

- **Rated voltage range:** AC100-264V
- **Rated Frequency:** 50/60Hz
- **Rated Current:** 13A
- **External Dimensions:** 443x115mm
- **Hole Cut-out size:** 100mm
- **USB Power:** 5V 2A in total.
- **Wireless Charger Power:** 9V 1.2A
- **Applications:** Kitchen Worktops Office Desks Reception Desks Caravans Dressing Tables

## How to use the product

### To start/ Close the motorized pop-up socket:

Press the button on the top of the unit for 3 seconds to power up the product, then touch the button to raise or lower the socket. The delay function is designed to prevent accidental operation triggered by children pop-up sockets must be securely installed on a solid horizontal surface for safe operation. and animals.

### Anti-collision function:

If the product encounters an obstruction during a raising operation, the anti-collision function will be activated and the unit will pause. To return to the normal raising operation, please press the button on the top of the product once again.

### Anti-pinch function

If the unit is obstructed during a closing operation, the anti-pinch function will be activated and the unit will reverse the closing direction and pause further movement. To return to the normal closing operation, please press the button on the top of the product once again.

### USB charger:

The product is equipped with 2 x USB charge sockets. The peak charging power is 5V 2A for the USB charging unit. The actual charging power is determined by the equipment connected to the USB sockets.

### Wireless Charger:

The product is equipped with a built-in wireless charger. The peak charging power is 9V 1.2A. Simply place your wireless charging enable device on the lid of the product. The charge will automatically start when the induction is paired.

#### **Bluetooth Speaker:**

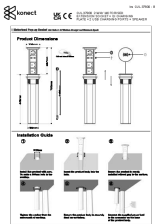
You may connect to the built-in Bluetooth speaker in the product by applying standard Bluetooth Pairing Practices. The name of the speaker is Motorised Socket. Please note that the speaker unit can only pair to one device at any time. If you want to pair to another unit, please press the reset key at the left bottom corner of the speaker unit.

#### **CAUTION**

This motorised pop-up socket must be securely installed on a solid horizontal surface for safe operation.

- **CHL, GORSE MILL, OL9 9RJ EU Authorised Representative: Authorised Rep Compliance, Ground Floor, 71 Lower Baggot Street, Dublin, Ireland, D02P593.**
- Waste electrical products should not be disposed of with household waste. Please recycle where facilities exist. Check with your Local Authority or local store for recycling advice.

#### **Documents / Resources**

	<p><a href="#">konect CUL 37800 2-Way Motorized Extension Socket</a> [pdf] Instruction Manual CUL 37800, 2-Way Motorized Extension Socket, CUL 37800 2-Way Motorized Extension Socket, Motorized Extension Socket, Extension Socket, Socket</p>
--	---