

KONDATOR 935-PM50 Built-in Power Socket Installation Guide

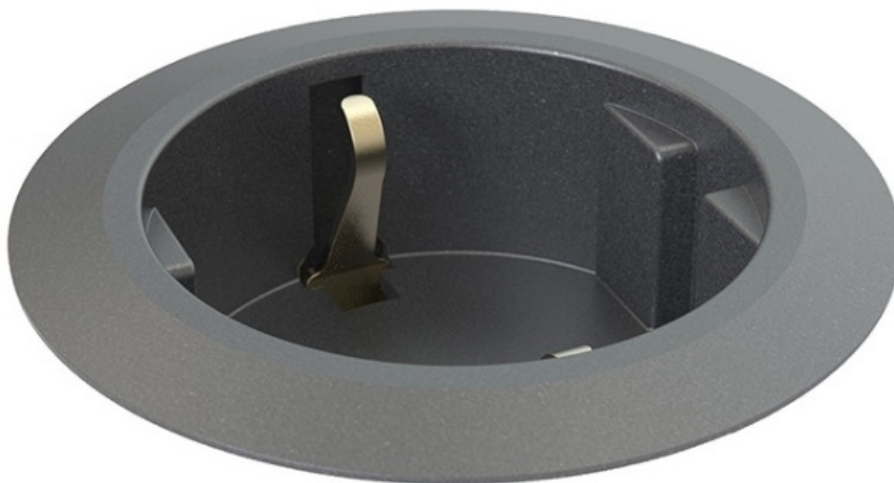
[Home](#) » [Kondator](#) » KONDATOR 935-PM50 Built-in Power Socket Installation Guide 

Contents

- [1 KONDATOR 935-PM50 Built-in Power Socke](#)
- [2 INSTALLATION INSTRUCTION](#)
- [3 CONTENT](#)
- [4 Documents / Resources](#)
- [5 Related Posts](#)



KONDATOR 935-PM50 Built-in Power Socke



INSTALLATION INSTRUCTION

- **A-** Installation into a round hole
- **B-** Installation into a tailored hole

CONTENT



x1

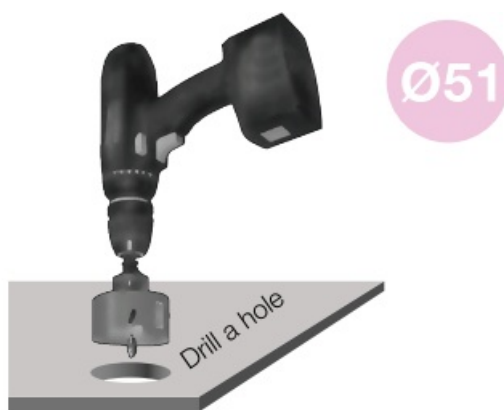


x1

• 1A

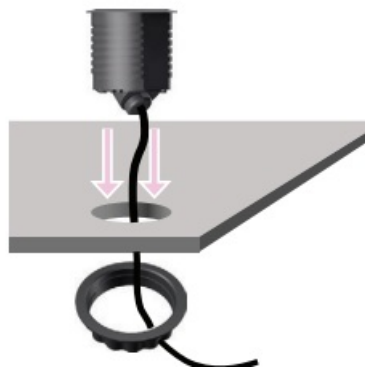
◦ DRILL

- Drill a hole in the table.



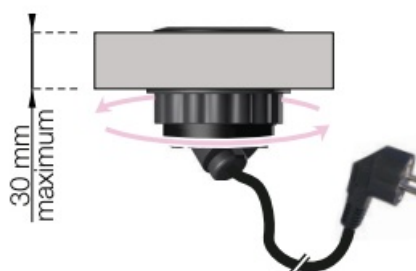
• 2A)

- INSERT Insert Powerdot into the hole and feed the power plug through the table and the plastic fastening nut.



• 3A

- TURN CLOCKWISE& PLUGIN Turn the plastic fastening nut as far up the thread as possible. Make sure it has been thoroughly tightened. Lastly, plug the Schuko plug into the wall socket.



- – 1 Schuko socket

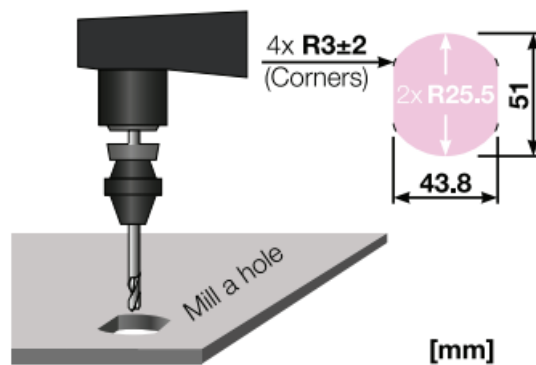
- w 1250 mm cable



- **1B**

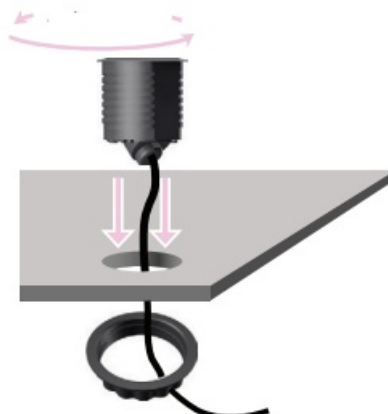
- MILL

- Mill a hole in the table.



- **2B**

- INSERT Insert Powerdot into the hole and feed the power plug through the table and the plastic fastening nut.



- **3B**


- Turn the plastic fastening nut as far up the thread as possible. Make sure it has been thoroughly tightened. Lastly, plug the Schuko plug into the wall socket. TURN CLOCKWISE & PLUGIN



- Kondator AB, Energivägen 8 – Box 121, SE-135 23 TYRESÖ, SWEDEN

- www.kondator.se

Documents / Resources

	<p>KONDATOR 935-PM50 Built-in Power Socket [pdf] Installation Guide</p> <p>935-PM50, Built-in Power Socket, Power Socket, Built-in Socket, Socket, 935-PM50 Power Socket</p>
---	---

[Manuals+](#).