



# KONA LABS MeterDog Water Monitoring System User Guide

[Home](#) » [KONA LABS](#) » KONA LABS MeterDog Water Monitoring System User Guide 





Meter Dog™ Quick Guide

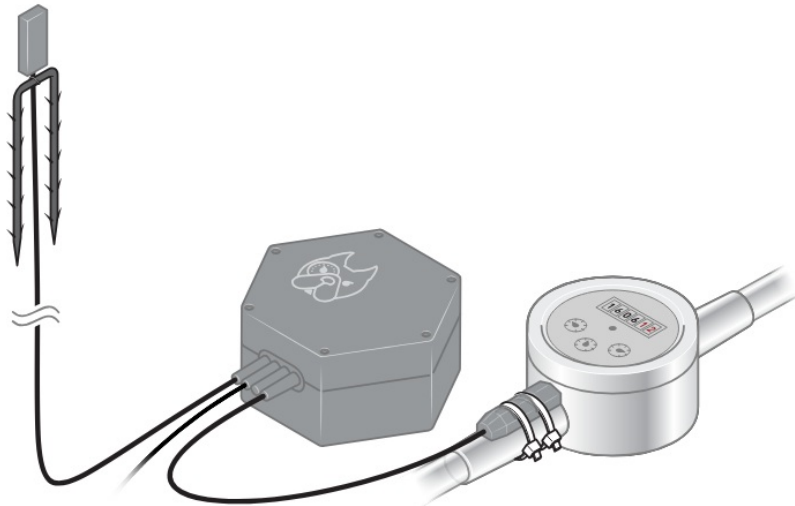
## Contents

- [1 Meter Dog Water Monitoring System](#)
- [2 Account Setup](#)
- [3 MeterDog Notes](#)
- [4 Documents / Resources](#)
  - [4.1 References](#)

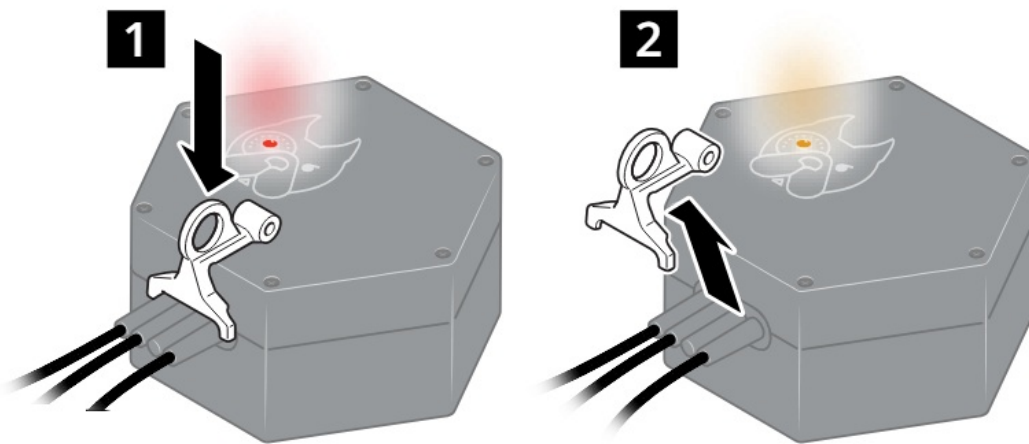
## Meter Dog Water Monitoring System



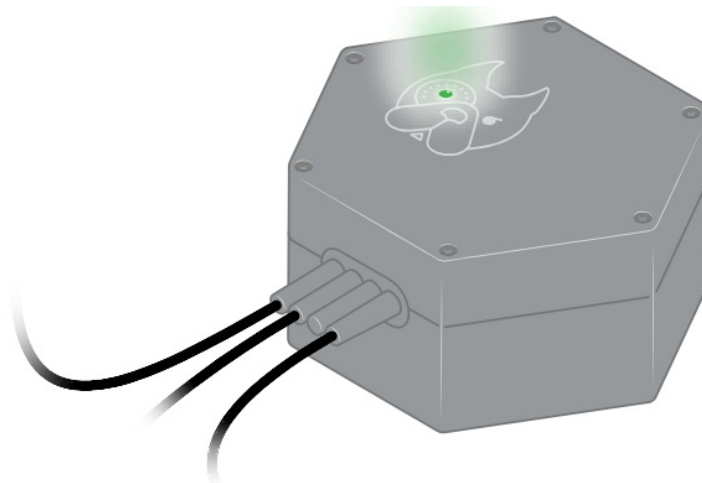
1. Secure the Meter Dog Sensor to the water meter register using the provided cable ties. Be sure the sensor tip is up against the meter register.



2. Position the antenna as high as possible to optimize cellular signal using the stake. Avoid installing the antenna tip on metal or on the ground



3. To activate the MeterDog, place the magnet as indicated for 30 seconds. Remove the magnet once the LED switches from Red to Orange.



4. The MeterDog will continue to flash while establishing a secure connection. Activation is successful once the LED goes from solid green, then the LED turns off.

## Account Setup

To start seeing data online you will need to register the device and create an account.

Step 1 – Go to: <https://customers.konamatrix.com/#/selfinstall> or scan QR Code.

Step 2: Register the device by using the 6 digit Sensor ID located on the top of the MeterDog. Once registered, you will receive an email to complete setting up your account. Make sure to use an email you have access too. Check the junk folder if you do not see it in your primary folder.

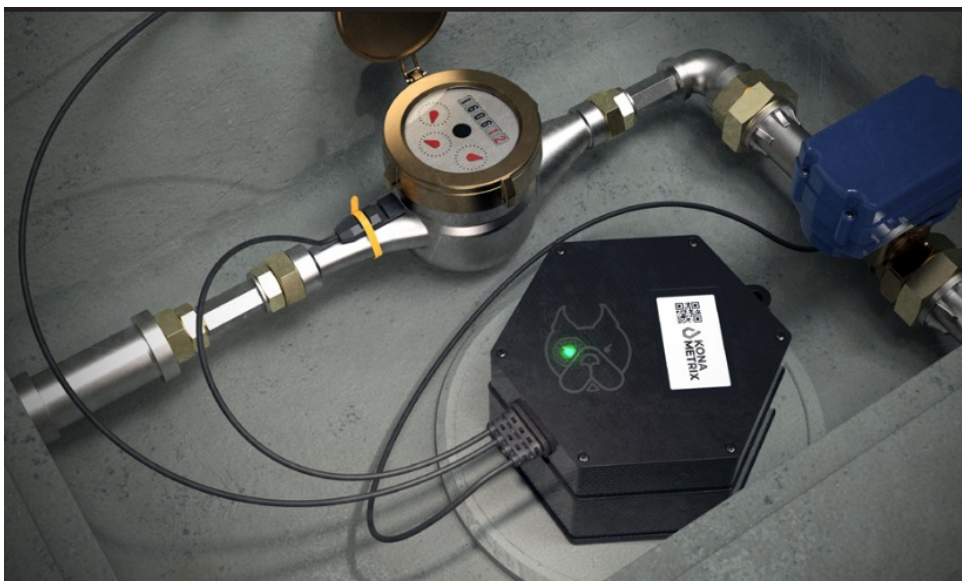
Step 3- Log into the MeterDog Dashboard and set up alerts.

If you need additional support scan the QR code for installation and support videos or send us a email at [support@konalabs.com](mailto:support@konalabs.com)

Self Onboard	Support Videos	Da
		
<a href="https://customers.konamatrix.com/#/selfinstall">https://customers.konamatrix.com/#/selfinstall</a>	<a href="https://www.youtube.com/playlist?list=PL6sTEwbRV4fRpGrjY88IIZ_zcM_SvT798">https://www.youtube.com/playlist?list=PL6sTEwbRV4fRpGrjY88IIZ_zcM_SvT798</a>	<a href="https://w">https://w</a>

## MeterDog Notes

- It will take 24 hours after activation to generate a Water Number
- The LED will turn off once activation is completed.
- The MeterDog only completes the activation process if the connection is stable. If the MeterDog LED continues to flash for more than 3 minutes, move the antenna tip to try and improve cellular communication. A few inches this way or that way usually does the trick.



## Documents / Resources



[KONA LABS MeterDog Water Monitoring System](#) [pdf] User Guide  
MeterDog Water Monitoring System, MeterDog, Water Monitoring System, Monitoring System, System

## References

- [🔗 Customer Portal](#)
- [User Manual](#)

### Manuals+, Privacy Policy

This website is an independent publication and is neither affiliated with nor endorsed by any of the trademark owners. The "Bluetooth®" word mark and logos are registered trademarks owned by Bluetooth SIG, Inc. The "Wi-Fi®" word mark and logos are registered trademarks owned by the Wi-Fi Alliance. Any use of these marks on this website does not imply any affiliation with or endorsement.