


**KOMATSU
KDSS1505
Starter Signal
Unit**



KOMATSU KDSS1505 Starter Signal Unit User Manual

[Home](#) » [Komatsu](#) » KOMATSU KDSS1505 Starter Signal Unit User Manual 

Contents

- [1 KOMATSU KDSS1505 Starter Signal Unit](#)
- [2 PREFACE](#)
- [3 Document Information](#)
- [4 The Federal Communication Commission](#)
- [5 Documents / Resources](#)
 - [5.1 References](#)

KOMATSU

KOMATSU KDSS1505 Starter Signal Unit



PREFACE

DISCLAIMER

Komatsu Ltd. reserves the right to make modifications, additions, and deletions to this document due to typographical errors, inaccurate information, or improvements to programs and/or equipment at any time and without notice. Such changes will, nevertheless, be incorporated into new editions of this document.

INTENDED USAGE

This manual is intended for anyone who attempts to operate Starter Signal Unit 'KDSS1505' in the first place and provides appropriate procedures for anyone who is engaged in handling/building them safely.

COMPLIANCE NOTICE

Please read the section "Compliance Notice" for locale-specific information regarding labeling, and safety-related statements.

Document Information

Revision	Date	Author(s)	Description/comment
1.0	2024/8/23	Y. Abe	Publication of the First Edition

Specification of Hardware

Outline Dimensions and Mass

1. Dimensions of Outline (Dimensions are in millimeters)

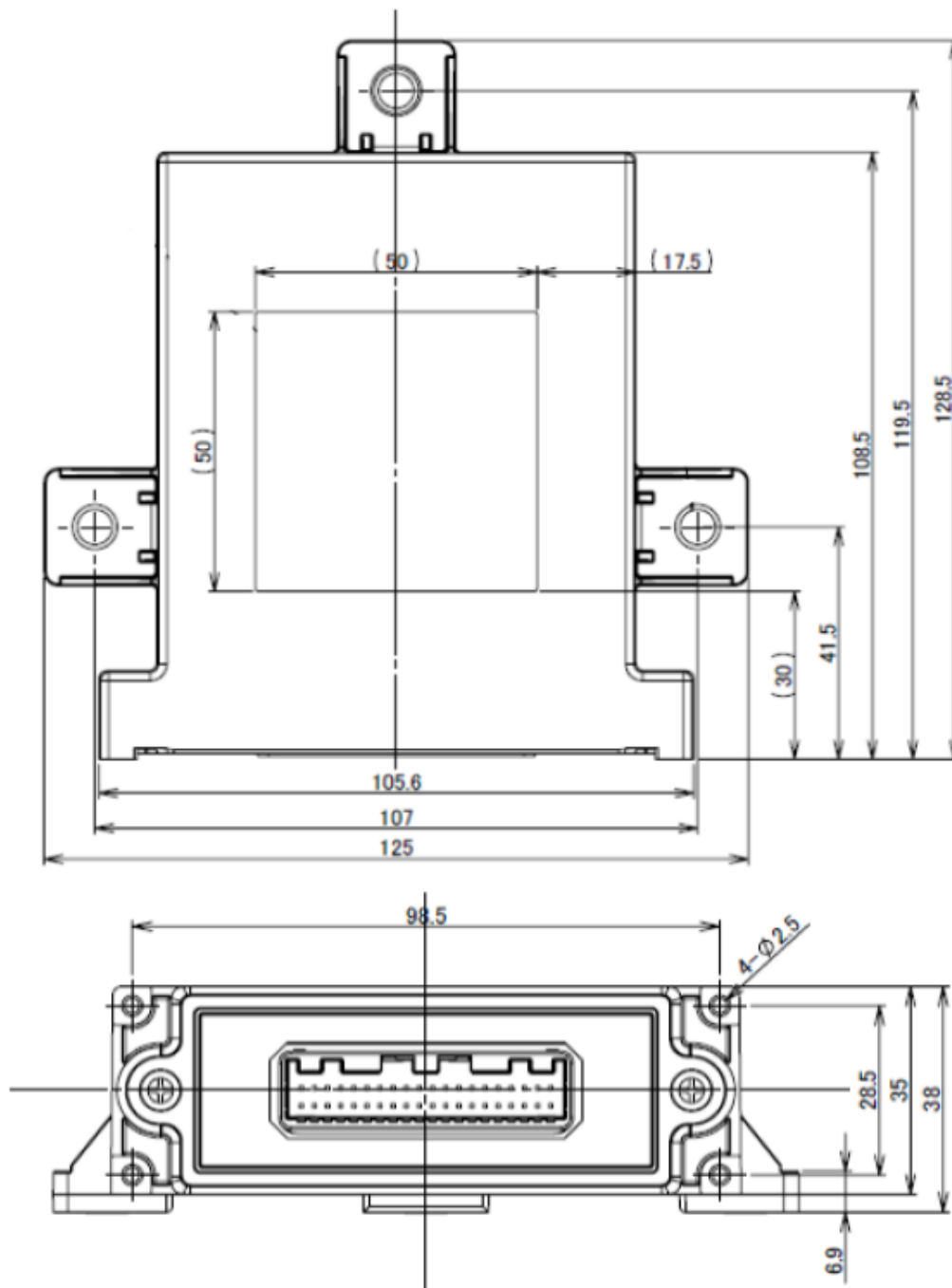


Figure 1 KDSS1505 Dimensions

2. Mass: 0.19 [kilograms]

Maximum Radio-Frequency Power

Frequency [MHz]	Max Power [dBm]
2402 – 2480	6

Compliance Notice

European Union

Manufacturer/Importer

Hereby, the Manufacturer/Importer:

The Manufacturer	The Importer
Tokai Rika Create Corporation 2-3-10 Aoi, Higashi-ku, Nagoya Aichi 461-0004, Japan	KOMATSU EUROPE INT. Mechelsesteenweg 586 B-1800 Vilvoorde, Belgium

Safety

Please refer to the vehicle manual for safety information.
Simplified Declaration of Conformity

Safety

Please refer to the vehicle manual for safety information.

Simplified Declaration of Conformity

English	<p>Hereby, Tokai Rika Create Corporation declares that the radio equipment type KDSS1505 is in compliance with Directive 2014/53/EU.</p> <p>The full text of the EU declaration of conformity is available at the following internet address: https://www.komatsu.eu/komtrax-radio-equipment-directive</p>
---------	--

Great Britain

Manufacturer/Importer

The Manufacturer	The Importer
Tokai Rika Create Corporation 2-3-10 Aoi, Higashi-ku, Nagoya Aichi 461-0004, Japan	KOMATSU UK Ltd.Durham Road, Birtley, Chester-le-Str eet, Co. Durham DH3 2QX, UK

Hereby, the Manufacturer/Importer

Hereby, Tokai Rika Create Corporation declares that the radio equipment type. KDSS1505 complies with the relevant statutory requirements.

STATUTORY INSTRUMENTS 2017 No. 1206 TELECOMMUNICATIONS (The Radio Equipment Regulations 2017)

The full text of the declaration of conformity is also available at the following internet address:
<https://www.komatsu.eu/komtrax-radio-equipment-directive>

The Federal Communication Commission

- Contains FCC ID: RYYEYSHSN

FCC CAUTION

Changes or modifications not expressly approved by the party responsible for compliance could void the user's authority to operate the equipment. This device complies with part 15 of the FCC Rules. Operation is subject to the following two conditions: (1) This device may not cause harmful interference, and (2) this device must accept any interference received, including interference that may cause undesired operation.

This transmitter must not be co-located or operated in conjunction with any other antenna or transmitter. This equipment complies with FCC radiation exposure limits set forth for uncontrolled environments and meets the FCC radio frequency (RF) Exposure Guidelines as this equipment has very low levels of RF energy.

Canada


Contains IC:4389B-EYSHSN

This device contains licence-exempt transmitter(s)/receiver(s) that comply with Innovation, Science and Economic Development Canada's license-exempt RSS(s). Operation is subject to the following two conditions:

1. This device may not cause interference.
2. This device must accept any interference, including interference that may cause undesired operation of the device.

This equipment complies with ISED radiation exposure limits set forth for uncontrolled environments and meets RSS-102 of the ISED radio frequency (RF) Exposure rules as this equipment has very low levels of RF energy.

Documents / Resources

	<p>KOMATSU KDSS1505 Starter Signal Unit [pdf] User Manual KDSS1505 Starter Signal Unit, KDSS1505, Starter Signal Unit, Signal Unit, Unit</p>
---	--

References

- [Radio Equipment Directive](#)
- [User Manual](#)

Manuals+, Privacy Policy

This website is an independent publication and is neither affiliated with nor endorsed by any of the trademark owners. The "Bluetooth®" word mark and logos are registered trademarks owned by Bluetooth SIG, Inc. The "Wi-Fi®" word mark and logos are registered trademarks owned by the Wi-Fi Alliance. Any use of these marks on this website does not imply any affiliation with or endorsement.