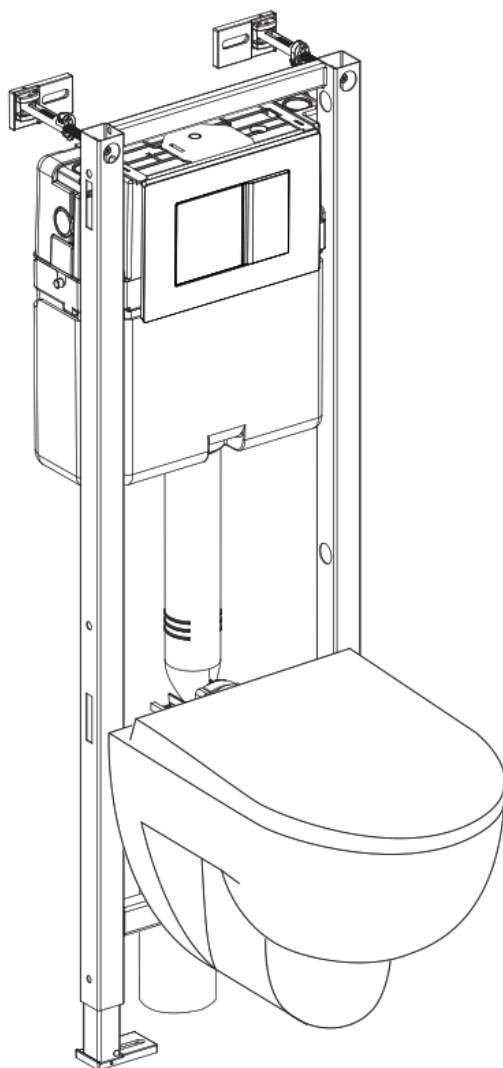


KOLO GT-WC element with the SMART FRESH system Installation Guide

[Home](#) » [KOLO](#) » KOLO GT-WC element with the SMART FRESH system Installation Guide 





http://kolo.com.pl/porady/videoporady_montaz_stalaza_Technic_Gt

Contents

- [1 GT-WC element with the SMART FRESH system](#)
- [2 Documents / Resources](#)
- [3 Related Posts](#)

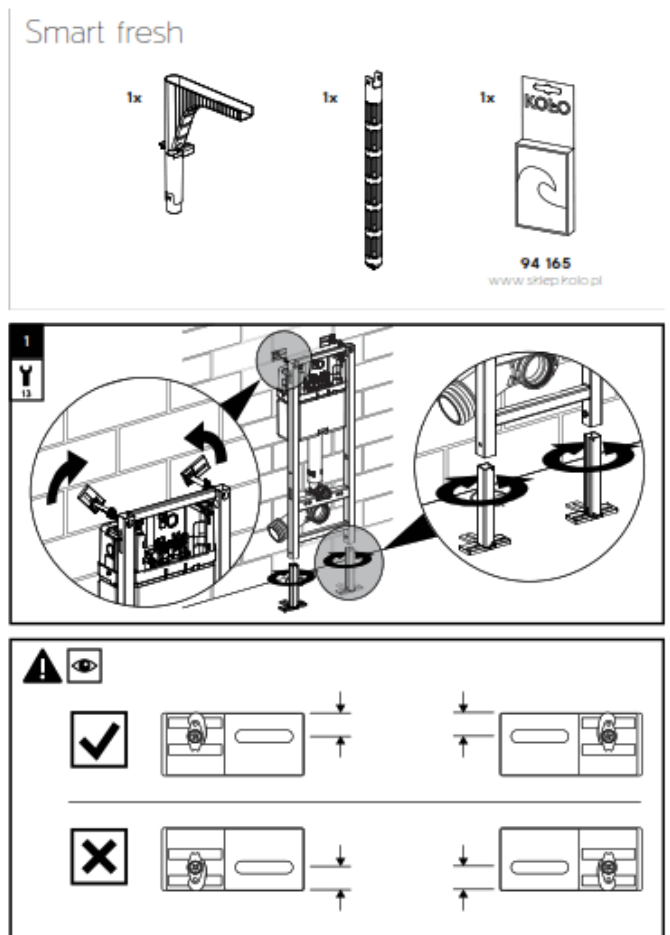
GT-WC element with the SMART FRESH system

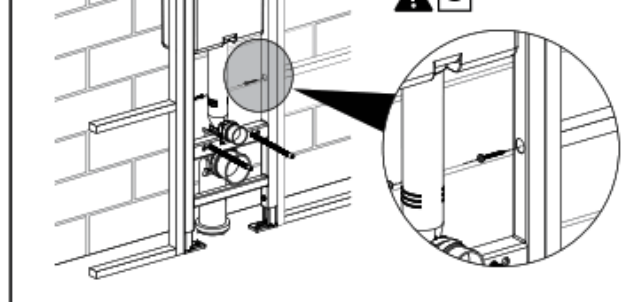
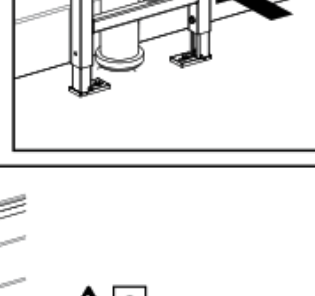
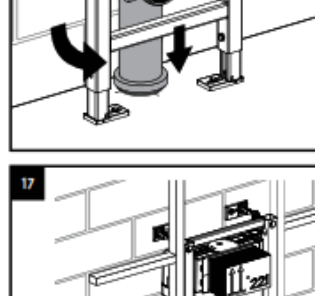
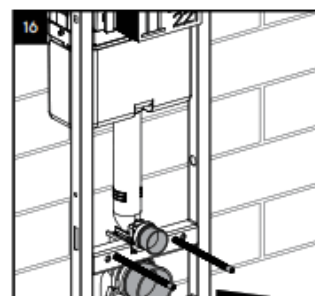
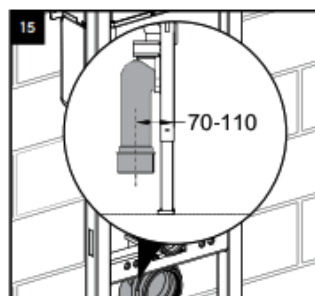
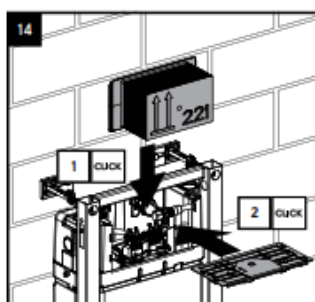
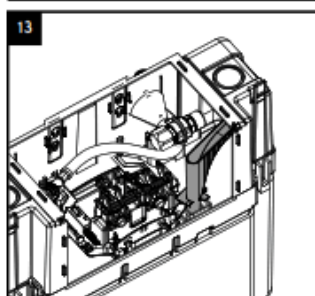
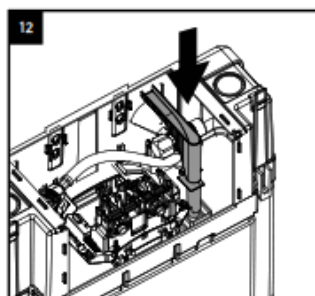
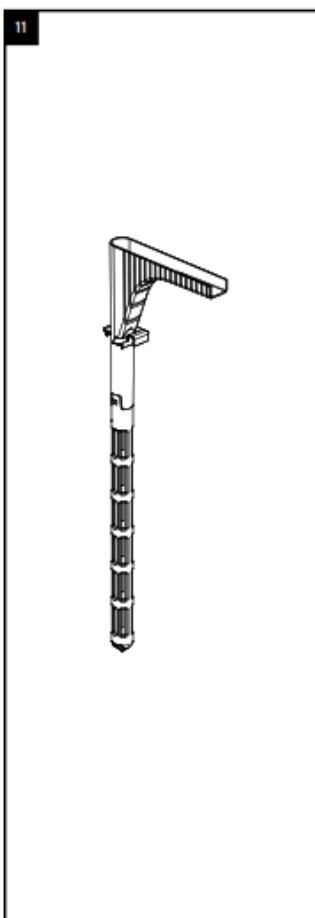
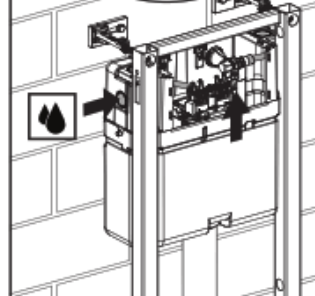
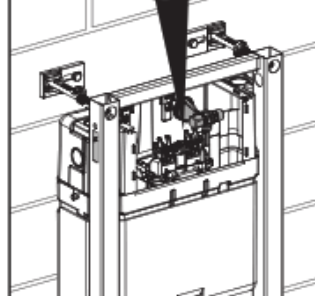
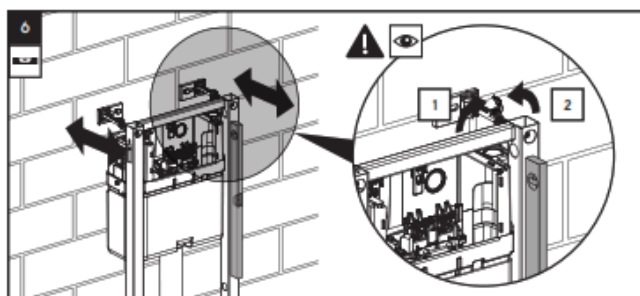
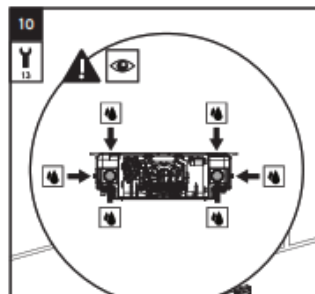
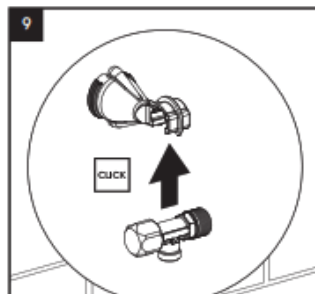
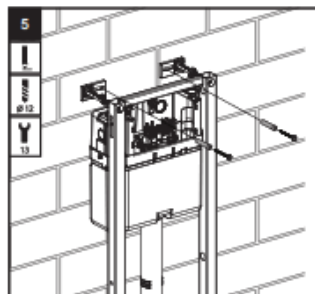
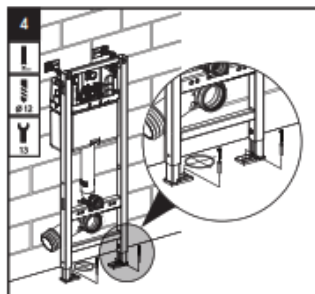
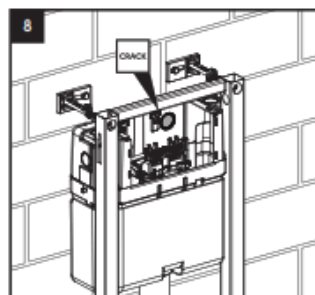
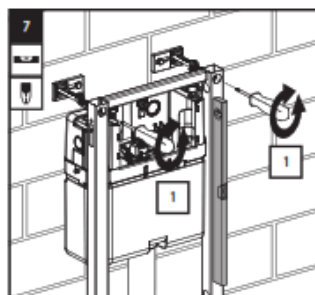
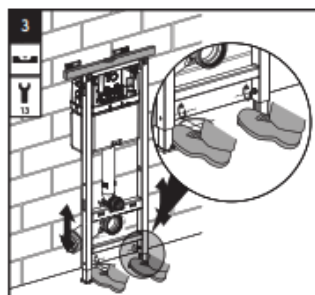
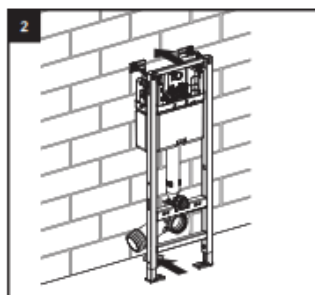
NOTE!

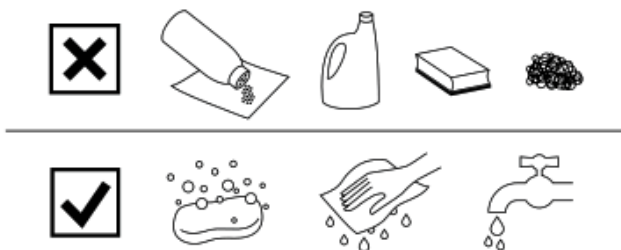
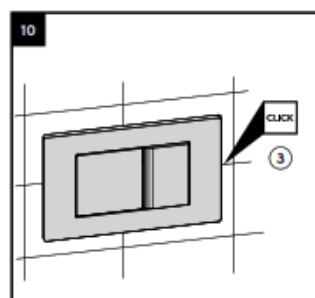
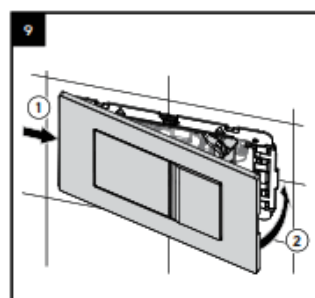
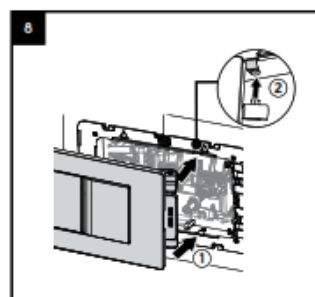
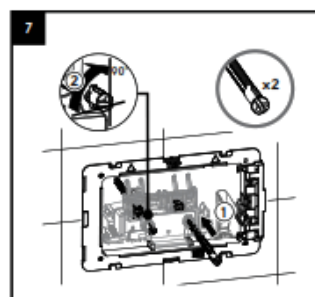
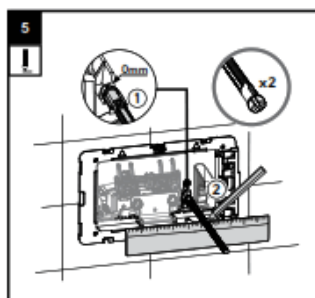
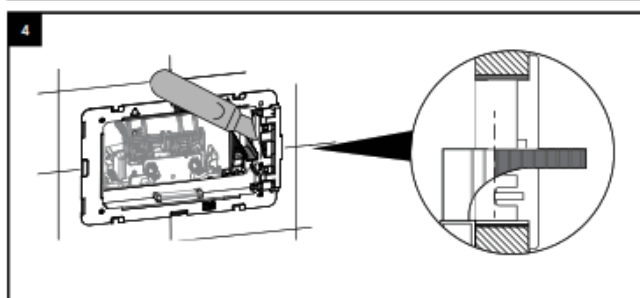
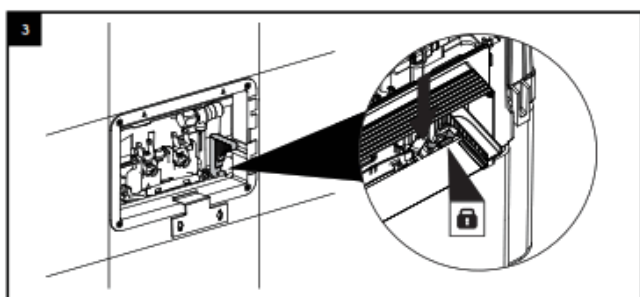
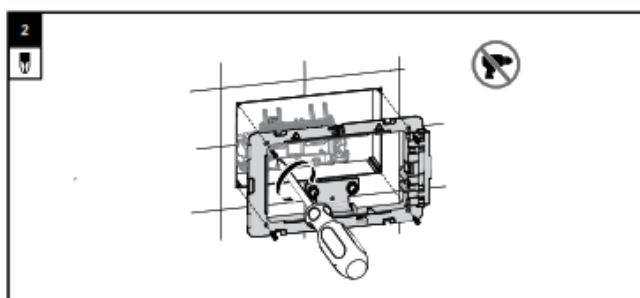
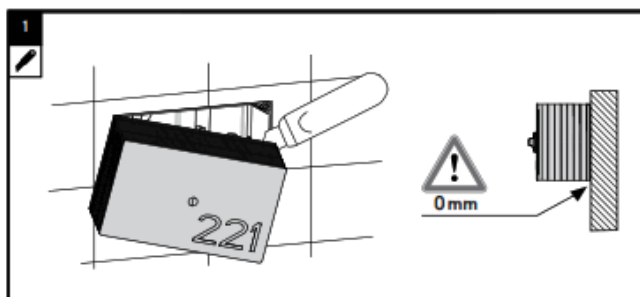
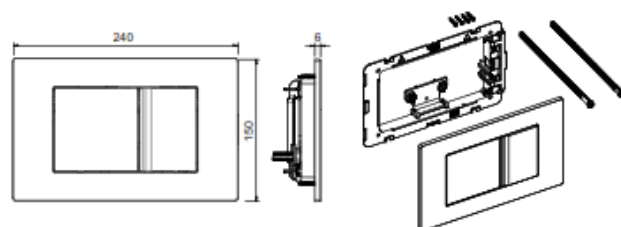
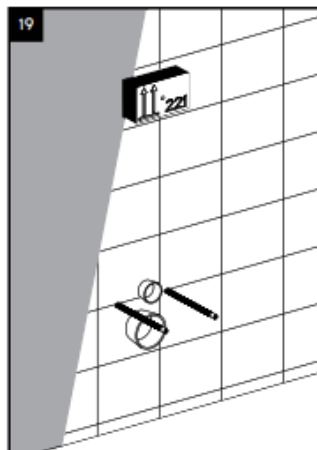
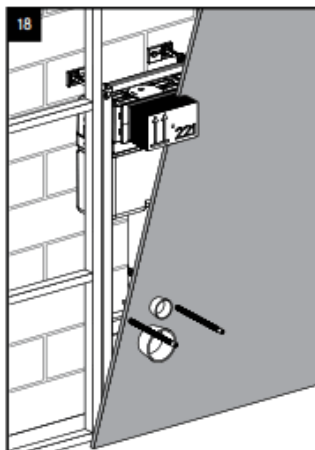
If damage to the product or other property occurs due to a failure to follow these recommendations, the guarantee shall cease to be valid and therefore Sanitec Kolo shall not be liable for any damage.

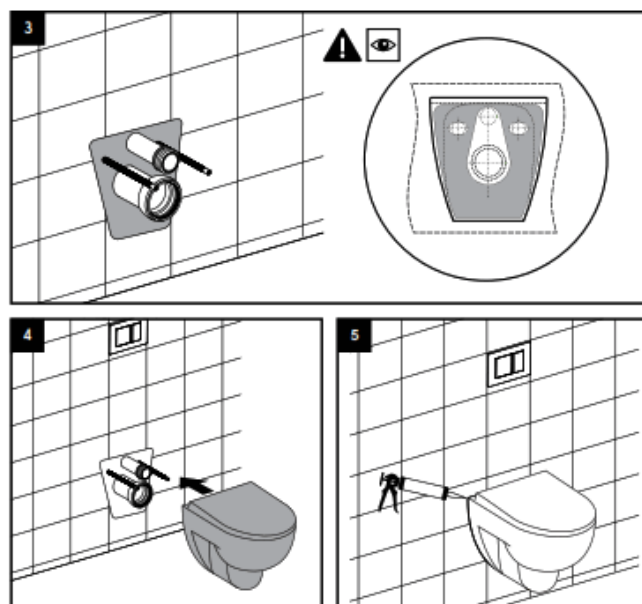
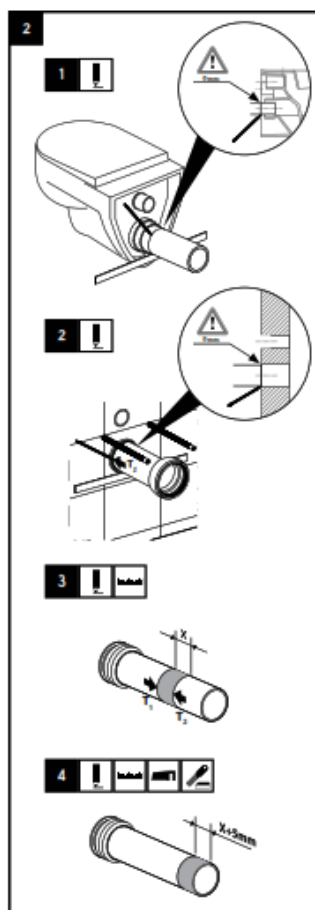
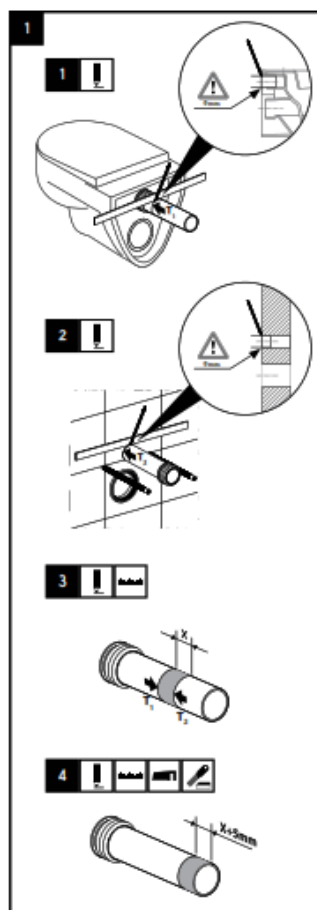
- The assembly instructions should always be followed.
- Only original parts should be used.

-
- Technical drawing of the 220° door hinge assembly, showing front and side views with dimensions and a parts list.
- Dimensions:**
- Front View:
 - Overall width: 400
 - Overall height: 995
 - Top mounting bracket width: 230
 - Top mounting bracket height: 180
 - Bottom mounting bracket width: 320
 - Bottom mounting bracket height: 220
 - Distance between mounting brackets: 355
 - Door thickness: +1000
 - Side View:
 - Overall height: 1133
 - Top mounting bracket width: 150-235
 - Door thickness: Ø90
 - Bottom mounting bracket width: Ø110
 - Bottom mounting bracket height: 0-200
 - Bottom mounting bracket width: 70-110
- Parts List:**
- 1x L (Left mounting bracket)
 - 1x R (Right mounting bracket)
 - 1x (Top mounting bracket)
 - 1x (Bottom mounting bracket)
 - 4x (Screws)
 - 2x (Screws)
 - 1x (Screw)
 - 1x (Screw)

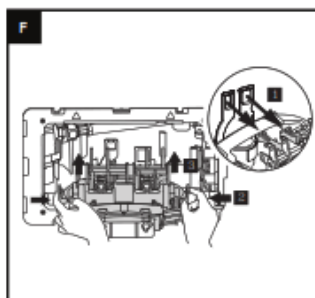
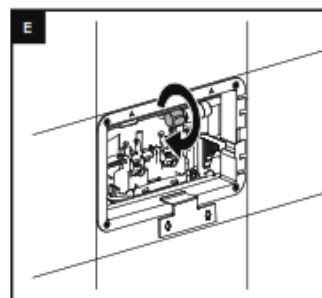
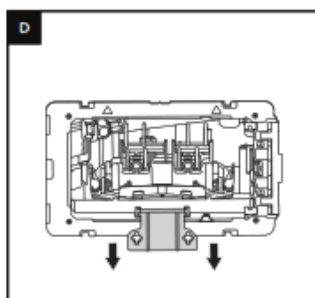
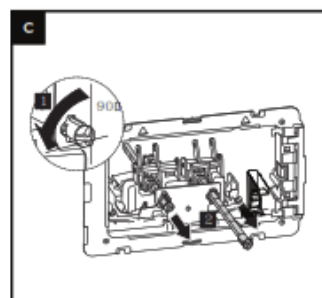
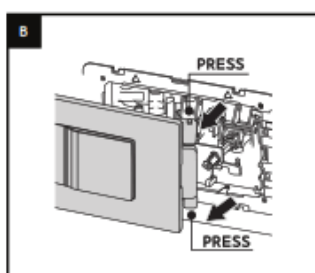
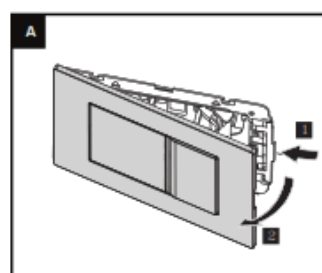




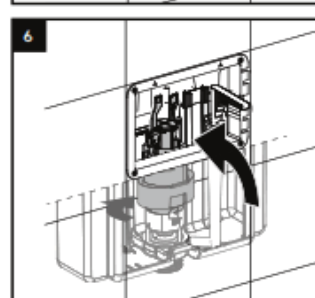
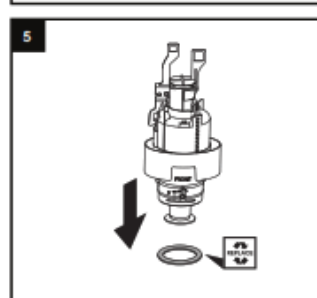
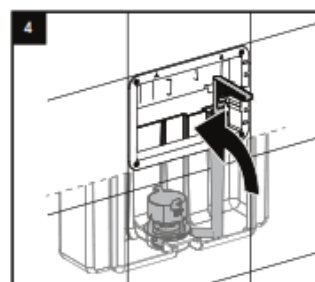
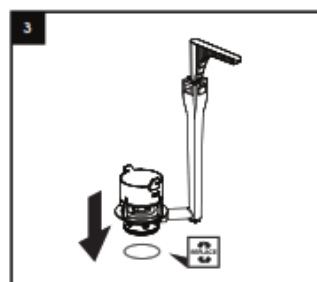
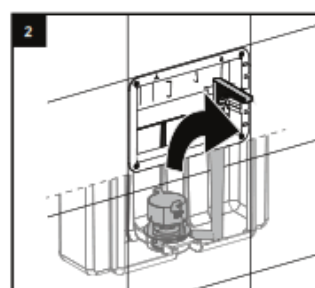
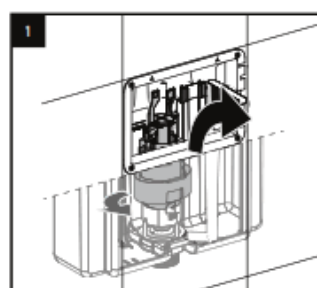




SERVICE



SERVICE A B C D E F





SERVICE

A

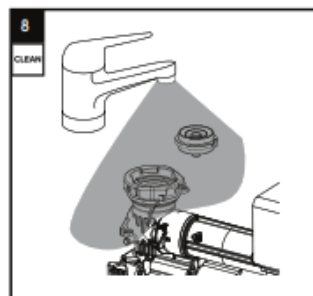
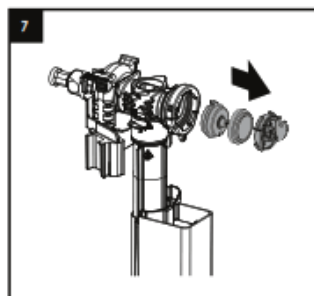
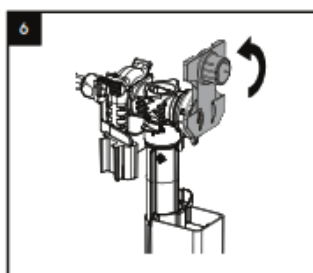
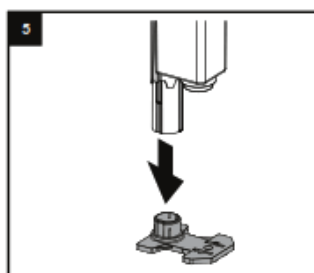
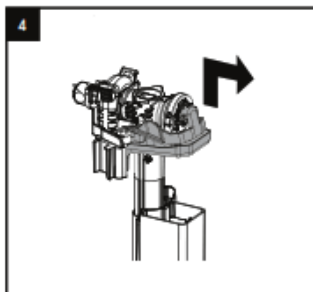
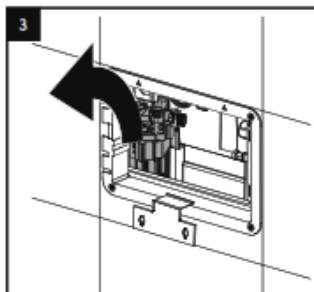
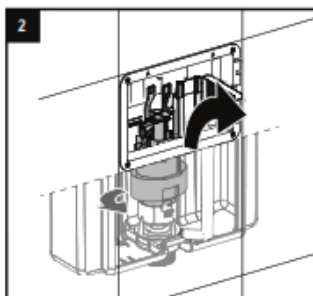
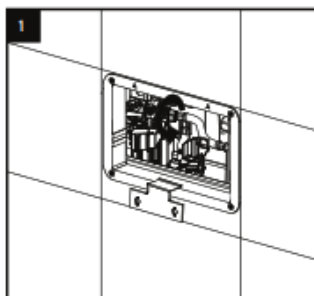
B

C

D

E

F



SERVICE

A

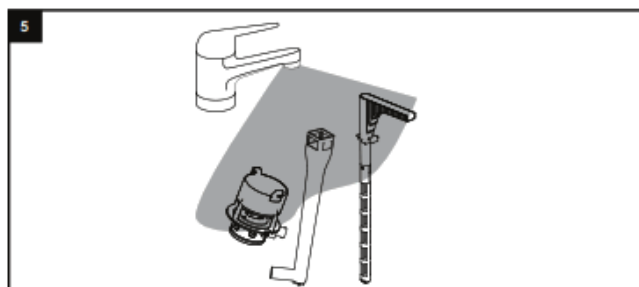
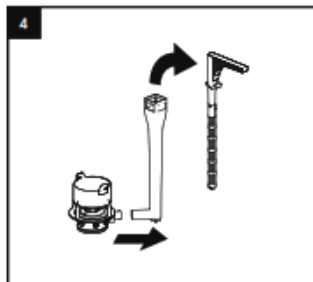
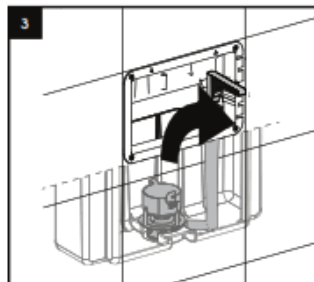
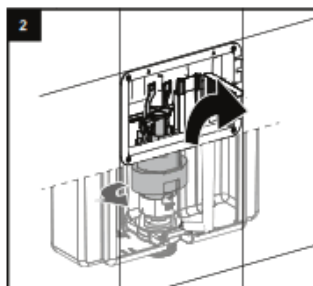
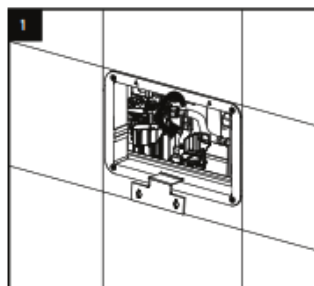
B

C

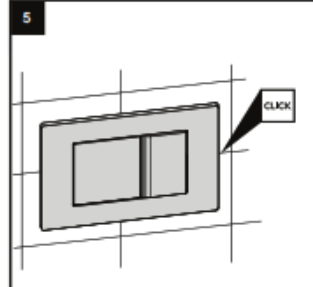
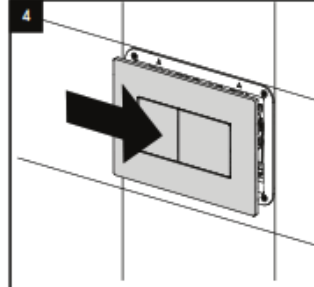
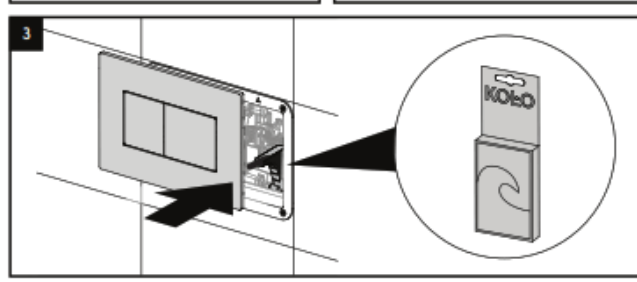
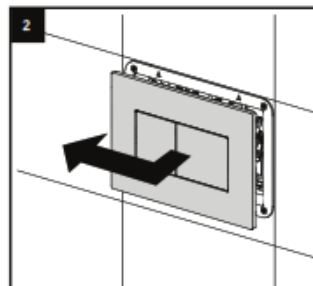
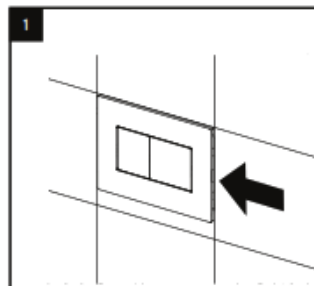
D

E

F



SERVICE



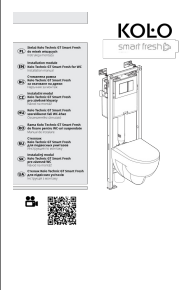


Revision no 4

22.05.2014

www.kolo.eu

Documents / Resources

	<p>KOLO GT-WC element with the SMART FRESH system [pdf] Installation Guide GT-WC element with the SMART FRESH system, element with the SMART FRESH system, S MART FRESH system, FRESH system</p>
---	--

[Manuals+](#)