



KOLINK Unity Peak ARGB Instruction Manual

[Home](#) » [KOLINK](#) » KOLINK Unity Peak ARGB Instruction Manual 



Contents

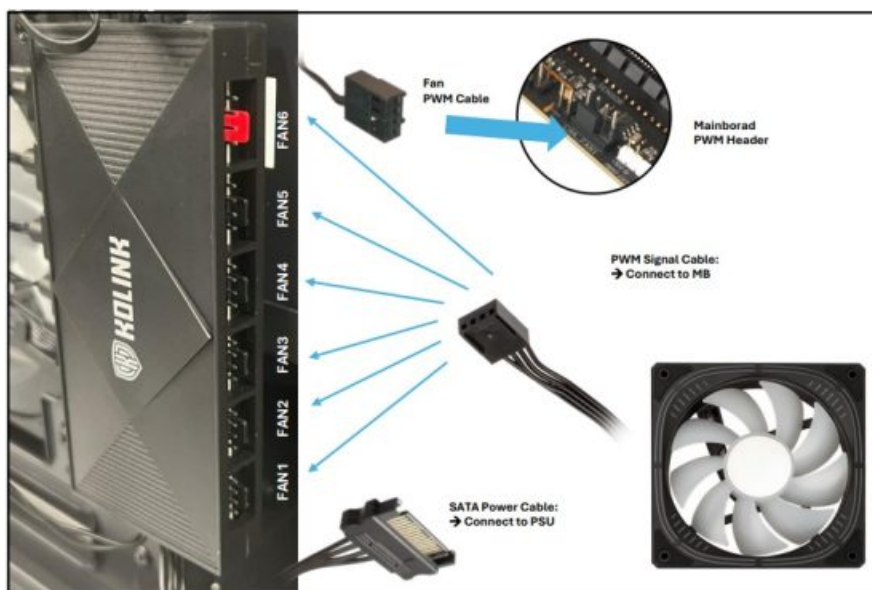
- [1 Unity Peak ARGB](#)
- [2 Power Connection](#)
- [3 ARGB Connection](#)
- [4 Remote Control Functions](#)
- [5 Documents / Resources](#)
 - [5.1 References](#)

Unity Peak ARGB



Included in the package: ARGB fan hub controller, remote control.

Power Connection



Connect up to 6 fans to the ARGB fan hub controller. 4 fans are pre-installed. Connect additional fans to the free PWM headers. Connect the PWM signal cable to a free mainboard PWM fan header (e.g. CHA_FAN1) to control the fan speed via the mainboard. Connect the SATA power cable to a free SATA power connection on your PSU.
Note: Only use the PWM headers of the ARGB fan hub controller to control fans. AIO pumps require PWM headers with constant 12V from your mainboard.

www.kolink.eu

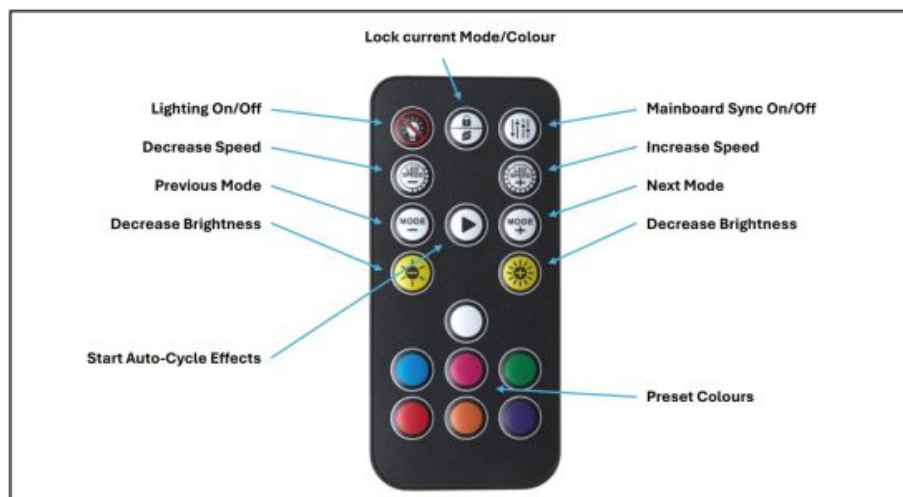
ARGB Connection



Connect up to 6 ARGB devices to the ARGB fan hub controller. 4 fans are pre-installed. Connect additional ARGB devices to the free headers. Connect the 5V ARGB MB sync. cable to the mainboard 5V ARGB header to control the lighting via the mainboard.

Note: The controller only supports 5V ARGB (5V/Data/-/GND) devices. Please check the manual of your mainboard for supported connectors.

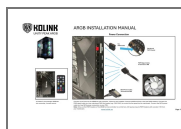
Remote Control Functions



www.kolink.eu



Documents / Resources



[KOLINK Unity Peak ARGB](#) [pdf] Instruction Manual
Unity Peak ARGB, Peak ARGB, ARGB

References

- [Home](#)
- [Home](#)
- [User Manual](#)

Manuals+. Privacy Policy

This website is an independent publication and is neither affiliated with nor endorsed by any of the trademark owners. The "Bluetooth®" word mark and logos are registered trademarks owned by Bluetooth SIG, Inc. The "Wi-Fi®" word mark and logos are registered trademarks owned by the Wi-Fi Alliance. Any use of these marks on this website does not imply any affiliation with or endorsement.