

KOHLER.
K-TS35939-4 Rite
Temp Single
Handle Valve
Trim



KOHLER K-TS35939-4 Rite Temp Single Handle Valve Trim Owner's Manual

[Home](#) » [Kohler](#) » KOHLER K-TS35939-4 Rite Temp Single Handle Valve Trim Owner's Manual 

Contents

- [1 KOHLERK-TS35939-4 Rite Temp Single Handle Valve Trim](#)
- [2 Features](#)
- [3 Installation](#)
- [4 Required Products/Accessories](#)
- [5 Codes/Standards](#)
- [6 KOHLER® Faucet Lifetime Limited Warranty](#)
- [7 Available Colors/Finishes](#)
- [8 Dimensions](#)
- [9 Technical Information](#)
- [10 FAQ](#)
- [11 Documents / Resources](#)
 - [11.1 References](#)
- [12 Related Posts](#)

KOHLER.

KOHLERK-TS35939-4 Rite Temp Single Handle Valve Trim



Product Specifications

- **Brand:** Buckley™
- **Temperature Setting Range:** 2-3/16" (56 mm) – 2-15/16" (75 mm)
- **Dimensions:** 4-7/8" (124 mm) x 3-7/8" (98 mm)
- **Drain Included:** No
- **Compliance:** ADA, OBC, CSA B651
- **Codes/Standards:** ASME A112.18.1/CSA B125.1 ADA ICC/ANSI A117.1 CSA B651 OBC

Features

- A single handle controls both on/off activation and temperature setting
- Coordinates with other products in the Buckley collection

Installation

- Trim only; requires valve to complete installation (sold separately)

Required Products/Accessories

- For wall-mount installation
 - K-8300 Series Rite-Temp® Valve Body Rough-ins
 - K-8305 Series Rite-Temp® Cartridges

Adapters, Rough-in and Extension Kits

8304-K-NA Range: 2-3/16" (56 mm) – 2-15/16" (75 mm)

ADA

CSA B651

OBC

Codes/Standards

- ASME A112.18.1/CSA B125.1
- ADA
- ICC/ANSI A117.1
- CSA B651

- OBC

KOHLER® Faucet Lifetime Limited Warranty

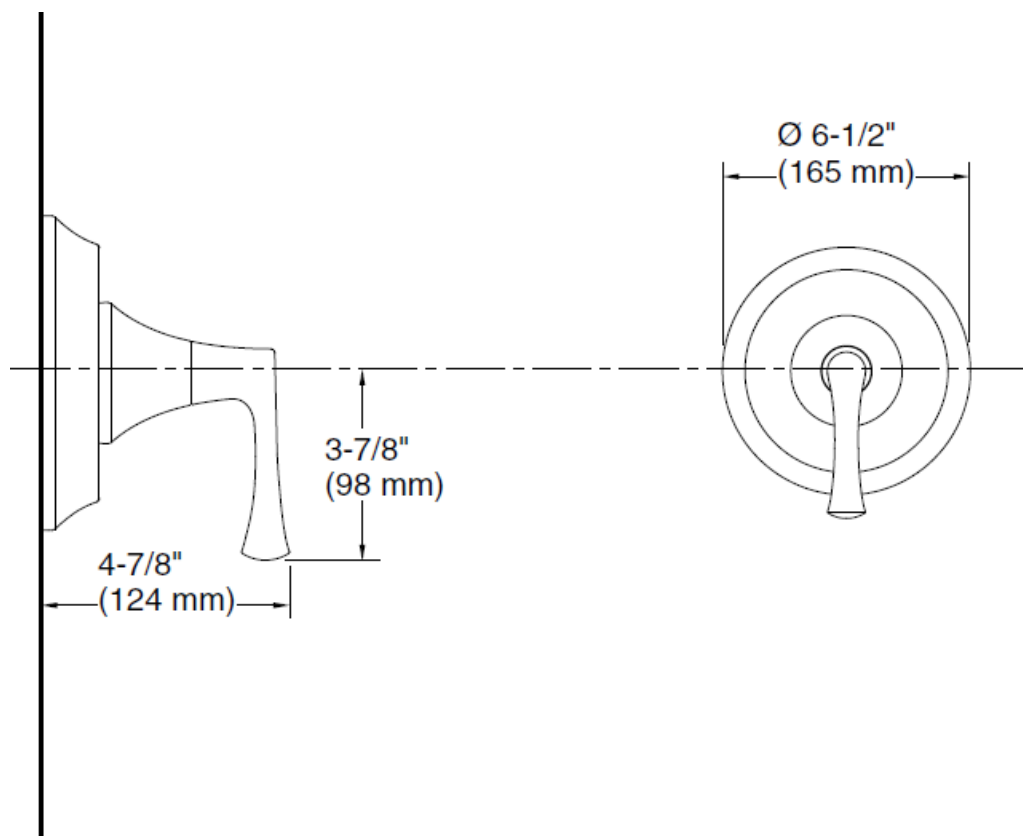
See website for detailed warranty information.

Available Colors/Finishes

Color tiles intended for reference only.

Color	Code	Description
	CP	Polished Chrome
	BN	Vibrant® Brushed Nickel
	BL	Matte Black

Dimensions



Technical Information

All product dimensions are nominal.

Drain included: No

Notes

Install this product according to the installation guide.

ADA, OBC, CSA B651 compliant when installed to the specific requirements of these regulations.

1-800-4KOHLER (1-[800-456-4537](tel:800-456-4537))

Kohler Co. reserves the right to make revisions without notice to product specifications.
For the most current Specification Sheet, go to www.kohler.com USA or www.kohler.ca Canada 7-3-2024 19:48
– US

FAQ

- **Q: Is the drain included with the Buckley™ product?**

A: No, the drain is not included. You may need to purchase it separately.

- **Q: Is the Buckley™ product compliant with regulations?**

A: Yes, the product is ADA, OBC, CSA B651 compliant when installed according to the specific requirements of these regulations.

- **Q: Where can I find detailed warranty information?**

A: Visit the manufacturer's website for detailed warranty information.

Documents / Resources

	<p>KOHLER K-TS35939-4 Rite Temp Single Handle Valve Trim [pdf] Owner's Manual K-TS35939-4, 8304-K-NA, K-TS35939-4 Rite Temp Single Handle Valve Trim, K-TS35939-4, Rite Temp Single Handle Valve Trim, Single Handle Valve Trim, Handle Valve Trim, Valve Trim</p>
--	--

References

- [K KOHLER Kitchen and Bathroom](#)
- [K KOHLER Kitchen and Bathroom](#)
- [User Manual](#)

[Manuals+](#), [Privacy Policy](#)

This website is an independent publication and is neither affiliated with nor endorsed by any of the trademark owners. The "Bluetooth®" word mark and logos are registered trademarks owned by Bluetooth SIG, Inc. The "Wi-Fi®" word mark and logos are registered trademarks owned by the Wi-Fi Alliance. Any use of these marks on this website does not imply any affiliation with or endorsement.