

KOHLER 1564943-K14-A Anthem Plus System Controller Module



KOHLER 1564943-K14-A Anthem Plus System Controller Module User Guide

[Home](#) » [Kohler](#) » KOHLER 1564943-K14-A Anthem Plus System Controller Module User Guide 

Contents

- [1 KOHLER 1564943-K14-A Anthem Plus System Controller Module](#)
- [2 Product Usage Instructions](#)
- [3 Frequently Asked Questions](#)
- [4 Begin Setup](#)
- [5 Connect to the System Controller](#)
- [6 Access the Controller Webpage – QR Code](#)
- [7 Access the Controller Webpage – Internal Web Address](#)
- [8 Enter Unique PIN](#)
- [9 Complete Setup](#)
- [10 Documents / Resources](#)
 - [10.1 References](#)

KOHLER®

KOHLER 1564943-K14-A Anthem Plus System Controller Module



Specifications

- Model Number: 1564943-K14-A
- Manufacturer: Kohler Co.
- Connectivity: Wi-Fi, Ethernet
- Control Interface: Web page

Product Usage Instructions

Begin Setup

Press the arrow in the bottom right corner to navigate through the setup steps.

Connect to the System Controller

Ensure the system controller is in access point mode and discoverable by your device's Wi-Fi settings. Connect to the network starting with "hub". If needed, use an ethernet connection.

Access the Controller Webpage – QR Code

If your device supports QR code scanning, scan the code to access the controller webpage. Make sure the Anthem+ System Controller LED is flashing white.

Access the Controller Webpage – Internal Web Address

If not using QR code, go to <http://kohler-myshower.local> to access the controller webpage. Follow the on-screen instructions to generate secure login credentials.

Enter Unique PIN

Generate a new PIN and enter it from the Anthem+ Control to complete pairing.

Complete Setup

Follow the prompts on the Anthem+ System Controller setup page to finalize system setup.

Frequently Asked Questions

Q: What should I do if my device cannot connect via Wi-Fi?

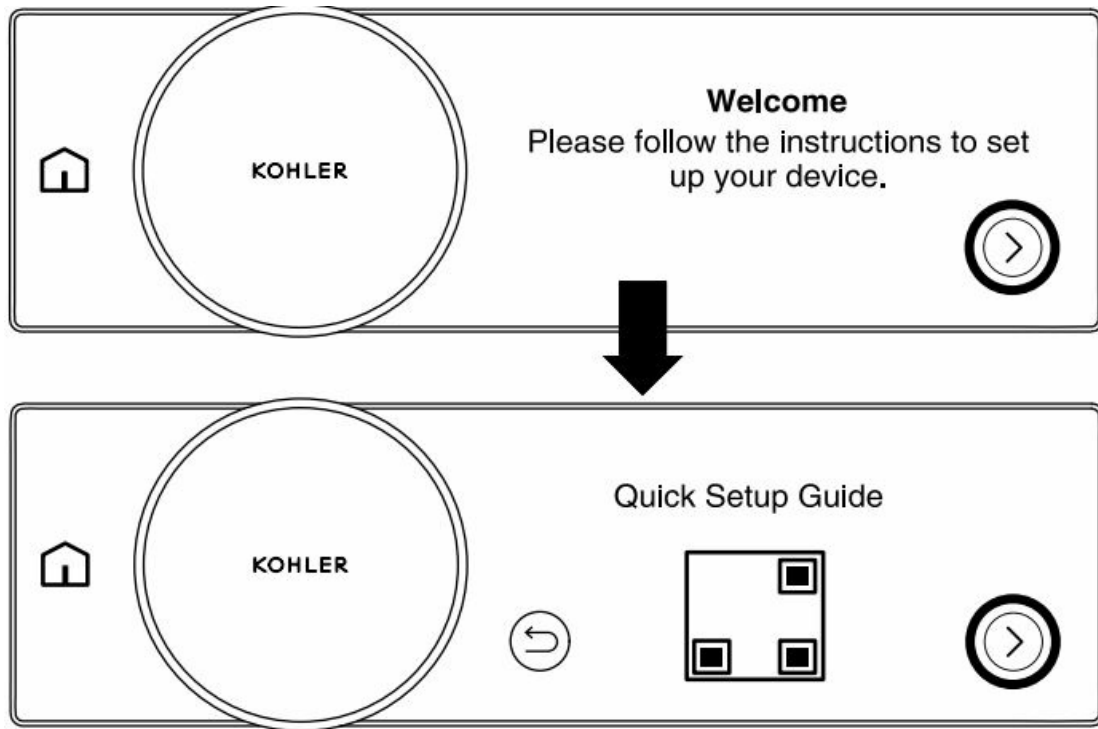
A: You can use an ethernet connection as an alternative method to connect to the system controller.

Q: How do I know if the system controller is ready to pair?

A: Verify that the Anthem+ System Controller LED is flashing white, indicating it is ready for pairing.

Record your model number: 1564943-K14-A

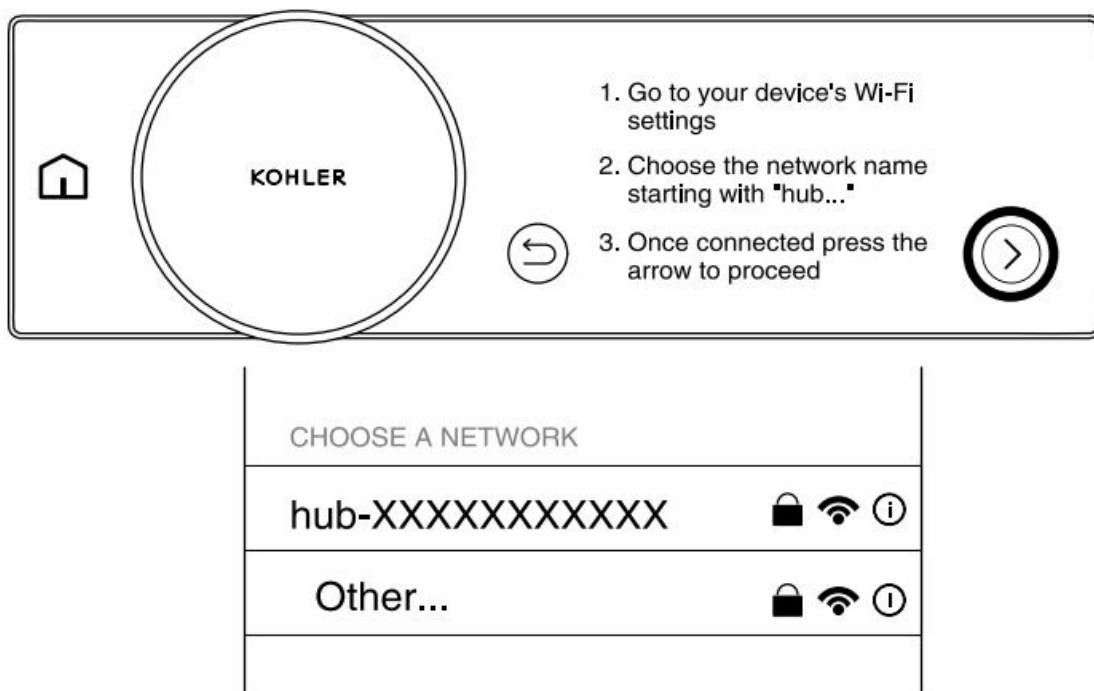
Begin Setup



NOTE: The arrow in the bottom right corner will be used to navigate to each step during setup.

- Press the arrow in the bottom right corner.
- For a digital version of this quickstart guide, scan the QR code.
- To proceed with the setup, press the arrow in the bottom right corner.

Connect to the System Controller

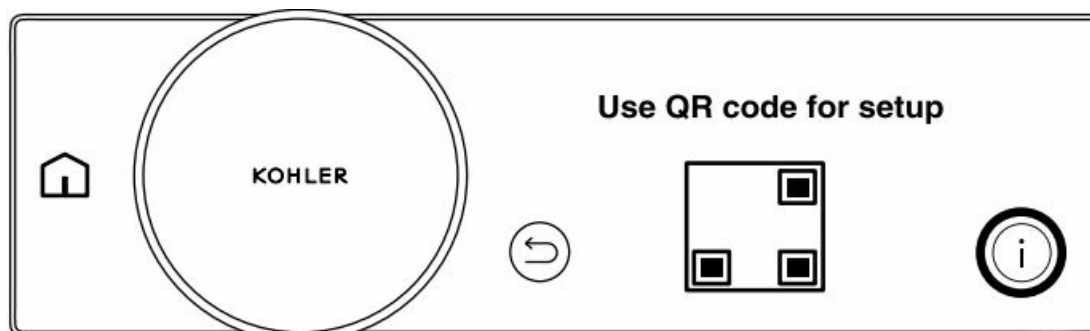


NOTE: The system controller is now in access point mode and discoverable by your device's Wi-Fi settings. If no action is taken for 30 minutes, the system controller will no longer be in access point mode. Press the back button and then press the arrow to return the system controller to access point mode.

NOTE: If your device cannot connect by Wi-Fi, an ethernet connection can be used. If connecting by ethernet, proceed to the “Enter Unique PIN” section.

- Go to your device’s Wi-Fi settings.
- Choose the network name starting with “hub”.
- Once connected, press the arrow to proceed.

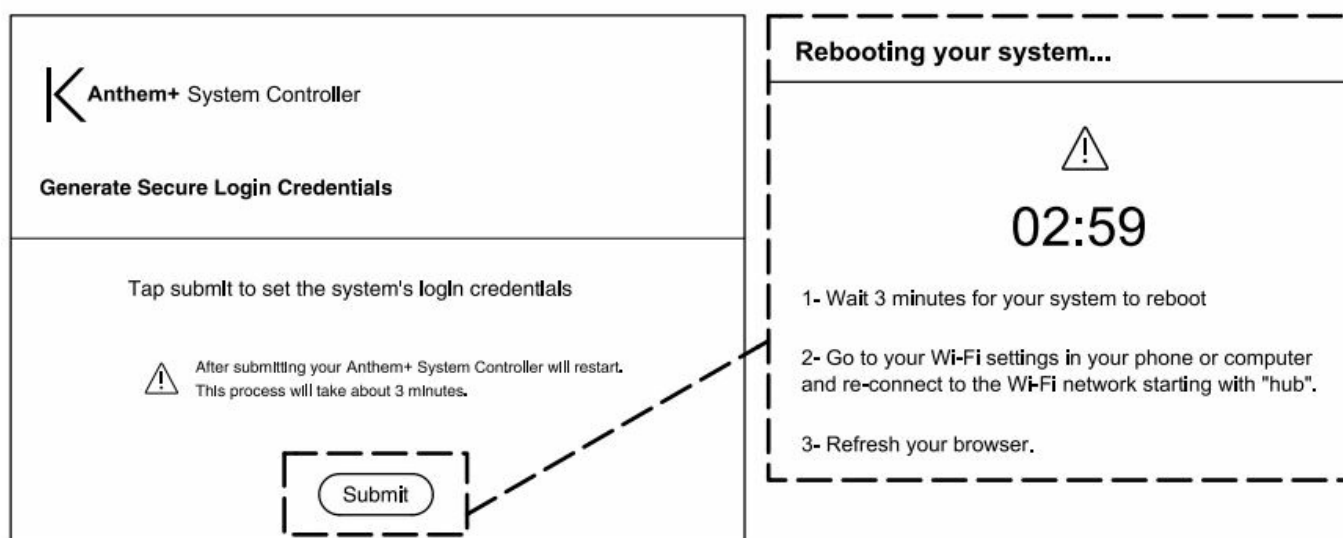
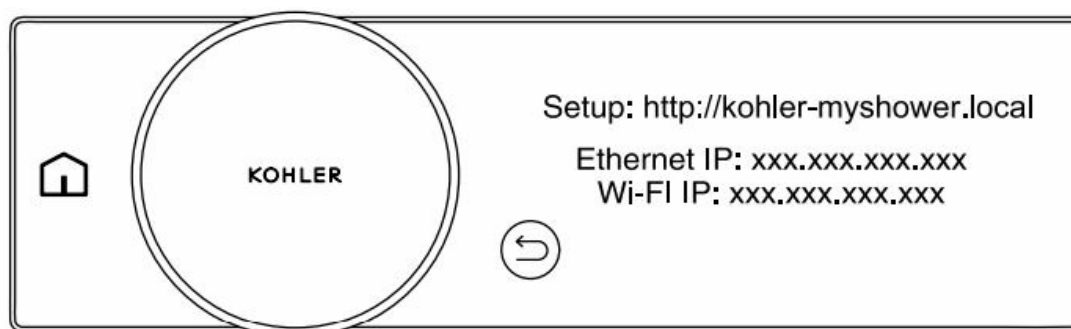
Access the Controller Webpage – QR Code



NOTE: If your device does not have the ability to scan a QR code, press the “i” icon to view the Anthem+ System Controller webpage address and proceed to the next section.

- Scan the QR code to be brought to the Anthem+ System Controller webpage.
- Verify that the Anthem+ System Controller LED is flashing white. This indicates the controller is ready to pair.

Access the Controller Webpage – Internal Web Address



NOTE: If you connected to the Anthem+ System Controller webpage using the QR code, proceed to the “Enter Unique PIN” section.

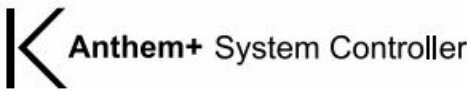
- Go to <http://kohler-myshower.local> to access the Anthem+ System Controller webpage.
- Click “Submit” on the “Generate Secure Login Credentials” page. The system will restart automatically.
- Reconnect to the system controller wifi.
- Refresh the browser.
- If the browser does not refresh, cycle to the power of the Anthem+ System Controller.

Enter Unique PIN

The image shows the Anthem+ System Controller login interface. At the top, there is a header bar with a home icon, the KOHLER logo, a refresh icon, a box displaying the Login Code 1654, and a checkmark icon. Below this is the main login area with the Anthem+ System Controller logo and the text 'Login PIN'. A section titled 'Input your four-digit PIN' contains instructions: 'If this is the first time logging into your system or if you have forgotten your PIN, tap on the "Generate New PIN" button. Generated PINs will be displayed on your Anthem™ Control screen.' There is a text input field labeled 'Four-Digit PIN' with four asterisks. A dashed line connects this field to a box on the right showing the Login Code 1654. At the bottom are two buttons: 'Generate New PIN' and 'Submit'.

- Click on “Generate New PIN”.
- The unique PIN is found on the Anthem+ Control.
- Enter the unique PIN in the input field and click “Submit”.

Complete Setup



Welcome to Kohler Anthem™

You are now connected to the Anthem+ System Controller. Please follow the prompts on the Anthem+ System Controller setup page to complete system setup.

kohler.com

Documents / Resources

<div><p>Quick Reference Guide</p><p>Anthem+™ System Controller Module</p><p>Product and model number: Model: Anthem+™ System Controller Module ©2015 Kohler Co. All rights reserved.</p><p>Product name: Anthem+™ System Controller Module Model: 1564943-K14-A</p><p>KOHLER</p><p>1564943-K14-A</p></div>	<p>KOHLER 1564943-K14-A Anthem Plus System Controller Module [pdf] User Guide 28214-ASC-TT, 1564943-K14-A, 1564943-K14-A Anthem Plus System Controller Module, 1564943-K14-A, Anthem Plus System Controller Module, System Controller Module, Controller Module, Module</p>
----------------------------------------------------------------------------------------------------------------------------------------------------------------------------------------------------------------------------------------------------------------------------------------------------------------------------	-------------------------------------------------------------------------------------------------------------------------------------------------------------------------------------------------------------------------------------------------------------------------------------------------

References

- [K Toilets, Showers, Sinks, Faucets and More for Bathroom & Kitchen | KOHLER](#)
- [K Toilets, Showers, Sinks, Faucets and More for Bathroom & Kitchen | KOHLER](#)
- [User Manual](#)

[Manuals+](#), [Privacy Policy](#)

This website is an independent publication and is neither affiliated with nor endorsed by any of the trademark owners. The "Bluetooth®" word mark and logos are registered trademarks owned by Bluetooth SIG, Inc. The "Wi-Fi®" word mark and logos are registered trademarks owned by the Wi-Fi Alliance. Any use of these marks on this website does not imply any affiliation with or endorsement.