

kogan
KASWCONTR
LR Wireless
Switch
Controller



kogan KASWCONTRLR Wireless Switch Controller User Guide

[Home](#) » [Kogan](#) » kogan KASWCONTRLR Wireless Switch Controller User Guide 

Contents

- [1 kogan KASWCONTRLR Wireless Switch Controller](#)
- [2 Product Information](#)
- [3 Product Usage Instructions](#)
- [4 COMPONENTS LIST](#)
- [5 OVERVIEW](#)
- [6 OPERATION](#)
 - [6.1 Bluetooth Connection](#)
- [7 SPECIFICATIONS](#)
- [8 Documents / Resources](#)
 - [8.1 References](#)
- [9 Related Posts](#)

kogan

kogan KASWCONTRLR Wireless Switch Controller



Product Information

Specifications

- Voltage: DC 5V
- Charging Time: Approximately 3.5 hours

Product Usage Instructions

Charging

The charging indicator will flash slowly and turn solid when fully charged.

Low Battery Indicator

When the controller's battery voltage drops below 3.6V, the corresponding channel indicator will flash slowly, indicating the need to charge the controller. At 3.45V, the controller will shut down due to low power.

Power Off

The controller will power off automatically if there is no user input within 5 minutes.

Reconnect

If the controller disconnects, follow the appropriate connection method based on the device being used.

Reset

To reset the controller, refer to the user manual for specific instructions.

Bluetooth Connection

1. Turn on the console and access the 'System Settings' menu.
2. In the menu, navigate to 'Airplane Mode' and select 'Controller Connection (Bluetooth)'.
3. Enable Bluetooth on the console and enter Bluetooth device searching mode.
4. Initiate Bluetooth pairing mode on the controller by pressing and holding the 'Home' button.
5. Once connected, the controller will vibrate and indicate successful pairing.

Wired Connection Modes

Console Mode:

1. Place the console in the base and connect the controller using the USB cable for automatic connection.
2. After removing the USB cable, the controller will reconnect via Bluetooth.

Nintendo Switch Mode:

1. Connect the controller to the console through USB and press any button to establish a connection.
2. Upon removing the USB cable, the controller will automatically switch to Bluetooth mode.

Windows (PC360) Mode:

The controller supports Turbo function and adjustable vibration intensity. Follow specific instructions for these functions based on your requirements.

Frequently Asked Questions (FAQ)

Q: How do I know when the controller is fully charged?

A: The charging indicator will turn solid when the controller is fully charged.

Q: What should I do if the controller's battery is low?

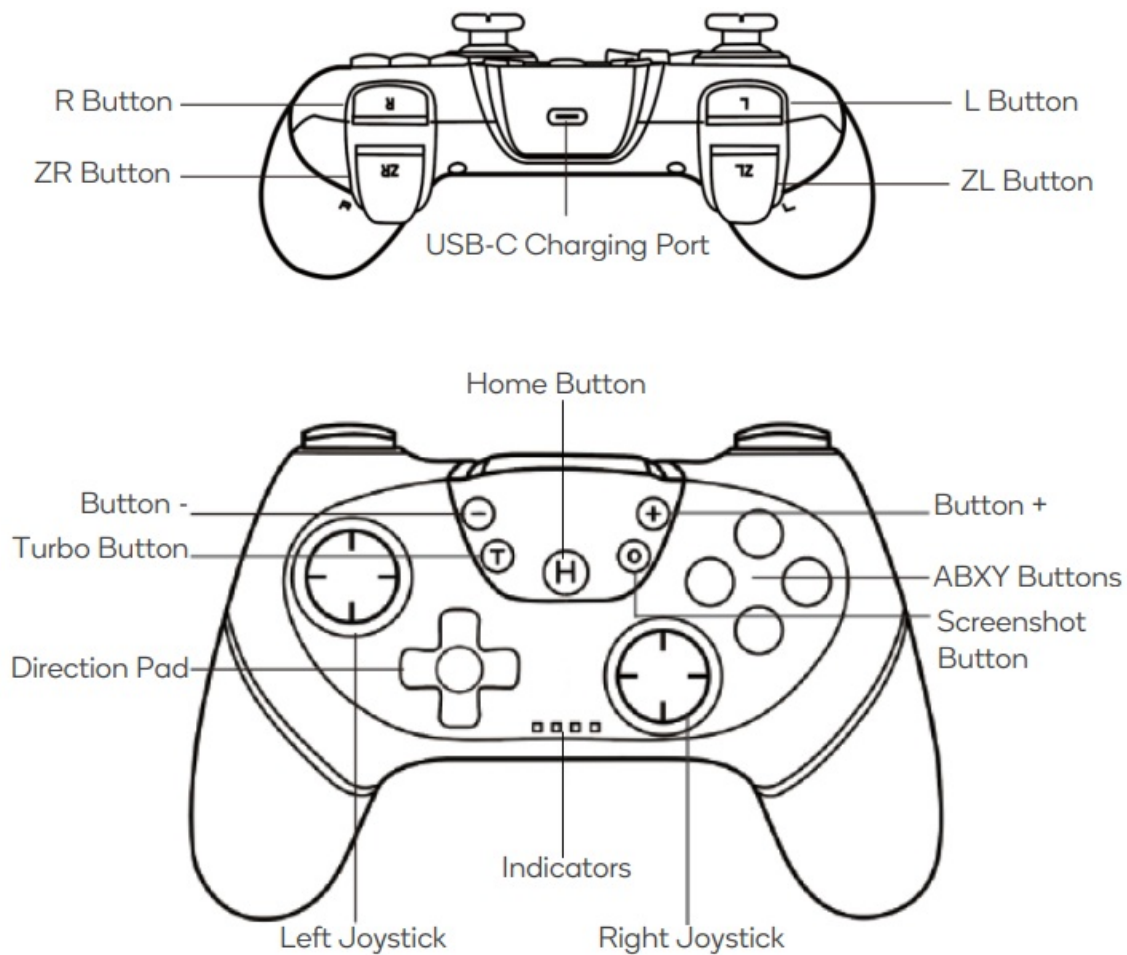
A: When the battery voltage drops below 3.6V, charge the controller immediately to avoid it shutting down due to low power.

KOGAN WIRELESS SWITCH CONTROLLER
COMPATIBLE WITH NINTENDO SWITCH/LITE/OLED

COMPONENTS LIST

- Controller
- USB to USB-C Charging Cable
- User Guide

OVERVIEW



OPERATION

Charging

- When the controller is off and connected to the adapter, the indicators will flash.
- Once fully charged, the indicators will turn off.
- When the controller is online and plugged into a USB port, the corresponding channel indicator will flash slowly and turn solid when fully charged.

Low Battery Indicator

When the controller's battery voltage drops below 3.6V, the corresponding channel indicator will flash slowly, indicating the need to charge the controller. At 3.45V, the controller will shut down due to low power.

Power Off

- When the controller is on, hold the 'Home' button for 5 seconds to power it off.
- When the controller is pairing to the console, it will automatically power off if it cannot connect after 60 seconds.
- When the controller is re-pairing to the console, it will automatically power off if it cannot reconnect after 30 seconds.
- When the controller is connected to the console, it will automatically power off if there is no user input within 5 minutes.

Reconnect

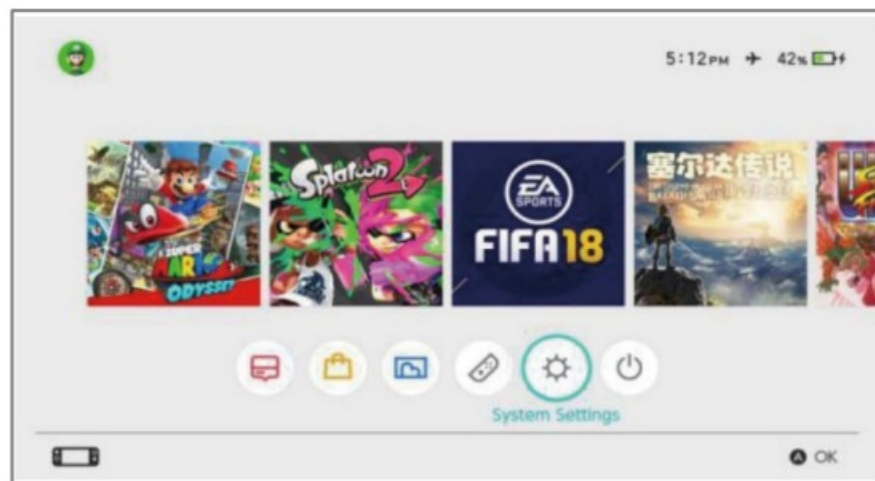
- To wake up and reconnect to the console:
 - When the controller is connected to the console, if the console is in sleep mode, the controller's connection indicator will be off.
 - Press the 'Home' button on the controller. The indicators will flash slowly and then rapidly to wake up the console. The console will wake up in about 3-10 seconds (only the 'Home' button can wake up the console).
- To reconnect when the console is powered on, press the 'Home' button on the controller.

Reset

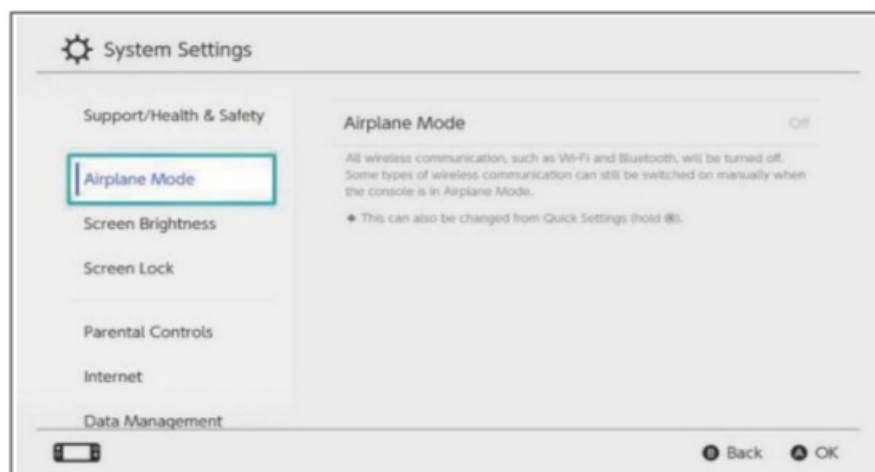
- If the controller is experiencing issues such as crashes or connection failures, restart the controller.
- Insert a pin into the reset hole on the back of the controller and press the 'Reset' button to reset the controller.

Bluetooth Connection

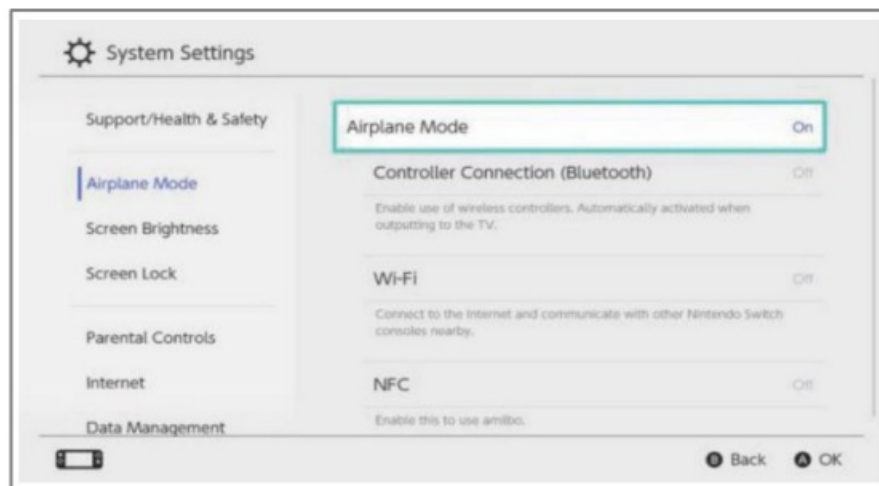
1. Turn on the console and click the 'System Settings' menu button on the home page.



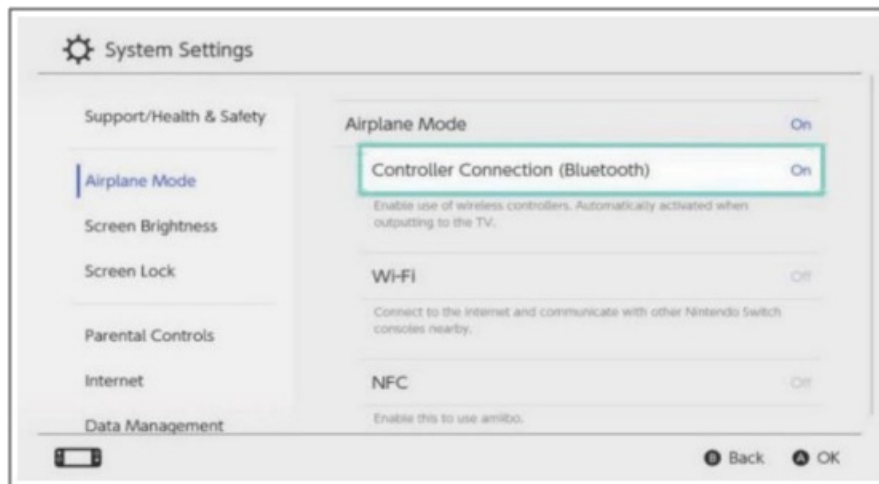
2. In the next menu, click the 'Airplane Mode' option.



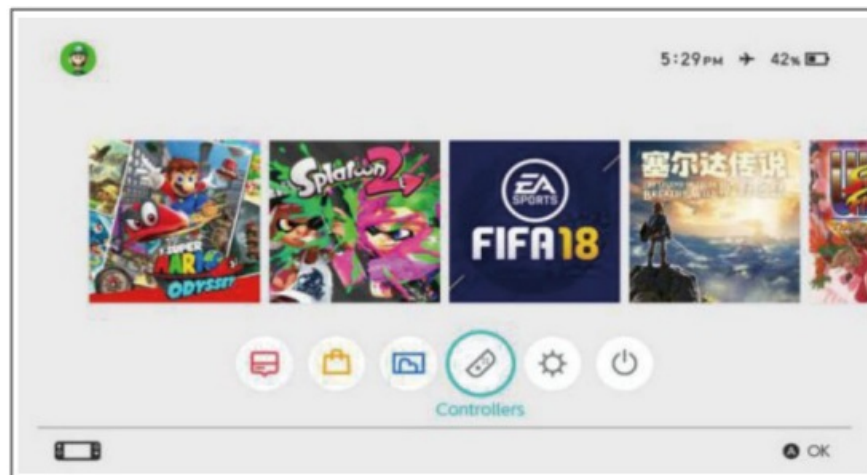
3. Click the 'Controller Connection (Bluetooth)' option.



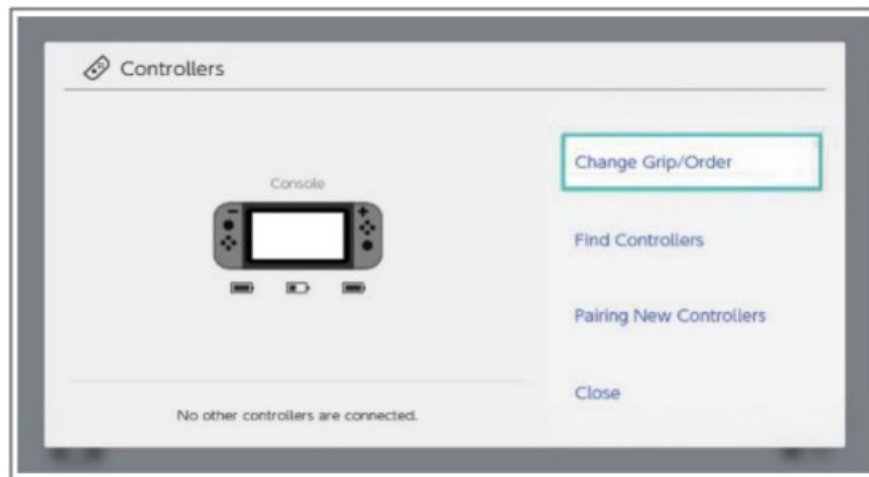
4. Turn on the Bluetooth function.



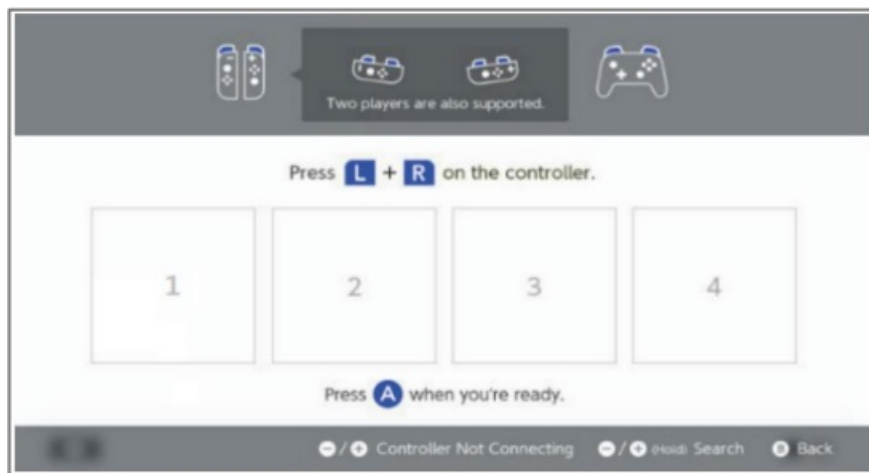
5. Enter Bluetooth device searching mode by clicking the 'Controllers' button on the homepage



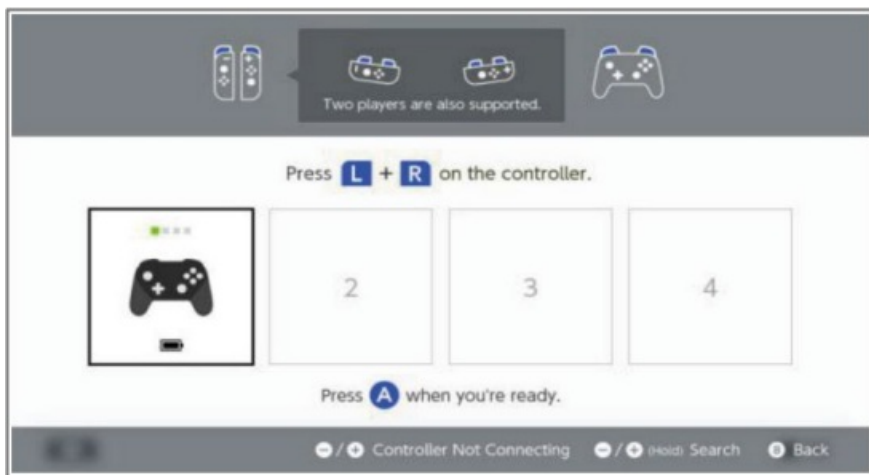
6. In the next menu, click the 'Change Grip/Order' option. The console will automatically search for paired controllers.



7. Press and hold the 'Home' button on the controller for 3-5 seconds to enter Bluetooth pairing mode. The indicators will flash rapidly.



8. Once the controller is successfully connected to the console, it will vibrate and automatically illuminate the corresponding channel indicator.



Console Mode Wired Connection

1. Place the console into the console base and connect the controller using the USB cable. The controller will automatically connect to the console.
2. After the USB cable is removed, the controller will automatically reconnect to the console via Bluetooth.

Nintendo Switch Mode Wired Connection

1. Place the console into the base and connect the controller through the USB cable.

2. Press any button (A/B/X/Y/ZL/ZR/R/L) on the controller to automatically connect it to the console.
3. After the USB cable is removed, the controller will automatically reconnect to the console via Bluetooth.

Windows (PC360) Mode

- When the controller is off, connect it to a PC using a USB cable. The PC will automatically install the driver. The second indicator on the controller will illuminate to indicate a successful connection.
- The display name will be 'Xbox 360 Controller for Windows'.

Turbo Function

The controller has a Turbo function. Hold down the 'Turbo' button and then press the corresponding button to set the Turbo.

- In Nintendo Switch mode, A, B, X, Y, L1, R1, L2, R2 can be set.
- In Windows (PC360) mode, A, B, X, Y, L1, R1, L2, R2 can be set.

Adjust turbo frequency:

- Press the 'Turbo' button and press the right joystick upwards to increase the frequency by 1 level.
- Press the 'Turbo' button and press the right joystick downwards to decrease the frequency by 1 level.
- There are 3 levels: 5Hz, 12Hz and 20Hz. The default frequency is 12Hz.
- When Turbo is activated, the indicator 1 will flash accordingly as the Turbo indicator.

Controller Vibration

- The controller has a vibration function with a pressure-sensitive motor.
- The console allows manual control to turn the controller vibration function on or off.
- The motor intensity can be adjusted on the Nintendo Switch platform.

Adjust the motor intensity:

- Press the 'Turbo' button and press the left joystick upwards to increase the intensity by 1 level.
- Press the 'Turbo' button and press the left joystick downwards to decrease the intensity by 1 level.
- There are 3 intensity levels: Strong (100% strength), Moderate (70% strength), and Weak (30% strength). The default intensity level is Strong (100% strength).

SPECIFICATIONS

- **Voltage** DC 5V
- **Charging Time** Approx. 3.5 hours
- **Working Current** <20mA
- **Vibration Current** 70-120mA
- **Sleep Current** 9uA
- **Charging Current** Approx. 180mA
- **Battery Capacity** 600mAh


- **Cable Length** 70cm/2.30 ft
- **Battery Capacity** Approx.10 hours
- **Bluetooth Transmission Distance** <10m

Need more information?

We hope that this user guide has given you the assistance needed for a simple set-up.

For the most up-to-date guide for your product, as well as any additional assistance you may require, head online to help.kogan.com

Documents / Resources

 <p>USER GUIDE kogan.com</p> <p>KOGAN WIRELESS SWITCH CONTROLLER COMPATIBLE WITH NINTENDO SWITCH/LITE/OLD</p>	<p>kogan KASWCONTRLR Wireless Switch Controller [pdf] User Guide KASWCONTRLR Wireless Switch Controller, KASWCONTRLR, Wireless Switch Controller, Switch Controller, Controller</p>
--	---

References

- [🔌 Kogan Help Centre](#)
- [User Manual](#)

Manuals+, Privacy Policy

This website is an independent publication and is neither affiliated with nor endorsed by any of the trademark owners. The "Bluetooth®" word mark and logos are registered trademarks owned by Bluetooth SIG, Inc. The "Wi-Fi®" word mark and logos are registered trademarks owned by the Wi-Fi Alliance. Any use of these marks on this website does not imply any affiliation with or endorsement.