



kogan com KASKALMRFA SmarterHome Add On Interconnected Smoke Alarm User Guide

[Home](#) » [Kogan.com](#) » kogan com KASKALMRFA SmarterHome Add On Interconnected Smoke Alarm User Guide 

Contents

- [1 kogan com KASKALMRFA SmarterHome Add On Interconnected Smoke Alarm](#)
- [2 Limitations of Smoke Alarms](#)
- [3 OVERVIEW](#)
- [4 Preparing the battery](#)
- [5 INTERCONNECTING ADDITIONAL UNITS](#)
- [6 FUNCTIONS](#)
- [7 CLEANING & CARE](#)
- [8 SPECIFICATIONS](#)
- [9 TROUBLESHOOTING](#)
- [10 Documents / Resources](#)
 - [10.1 References](#)
- [11 Related Posts](#)



kogan com KASKALMRFA SmarterHome Add On Interconnected Smoke Alarm



SAFETY & WARNINGS

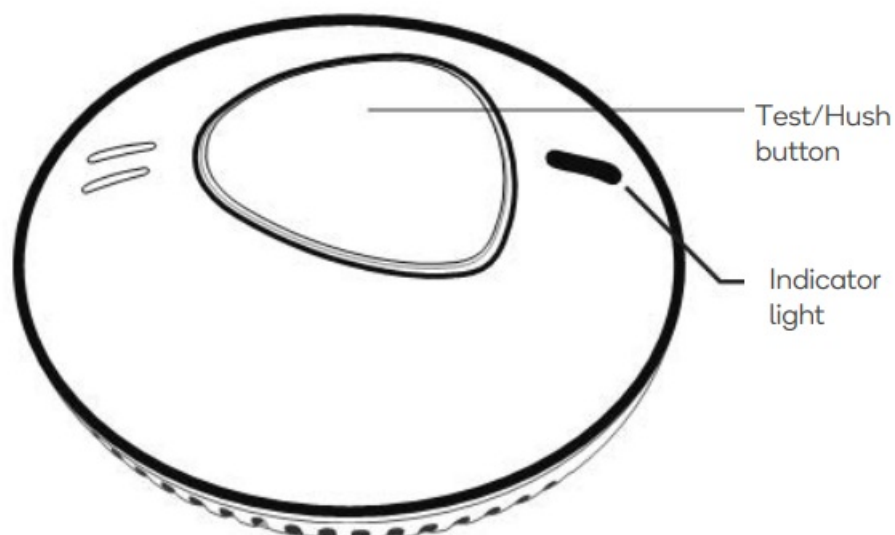
WARNING: In case of an emergency, contact your local fire department.

- Australia: Call 000 for Police, Fire and Ambulance services.
- New Zealand: Call 111 for Police, Fire and Ambulance services.

Limitations of Smoke Alarms

- Smoke alarms have played a key role in reducing deaths resulting from home fires worldwide. However, like any warning device, smoke alarms can only work if they are properly located, installed and maintained and if smoke can reach the alarms.
- Smoke alarms may not wake all individuals.
- Smoke alarms cannot detect fires if the smoke does not reach the alarms. Smoke from fires in chimneys or walls, on roofs or on the other side of closed doors may not reach bedroom or sleeping area – especially if the bedrooms or sleeping area doors are closed at night.
- Smoke alarms may not have time to sound before the fire itself causes damage, injury, or death, since smoke from some fires may not reach the unit immediately. Examples of this include persons smoking in bed, children playing with matches, or fires caused by violent explosions resulting from escaping gas.
- Smoke alarms are not foolproof. Like any electronic device, smoke alarms are made of components that can wear out or fail at any time. You must test the unit weekly to ensure your continued protection. Smoke alarms cannot prevent or extinguish fires. They are not a substitute for property or life insurance.
- Smoke alarms have a limited life. The unit should be replaced immediately if it is not operating properly. You should always replace a smoke alarm after 10 years from date of purchase. Write the purchase date on the space provided on back of unit.

OVERVIEW



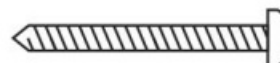
Additional components:



AA 3V Li-ion Battery



x2 Anchor Plugs



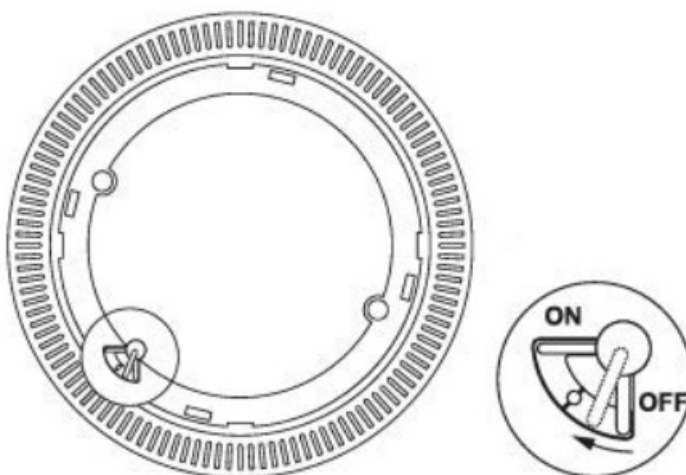
x2 Screws

(Before installing this product, check which plugs and screws are best suited for the surface)

GETTING STARTED

Preparing the battery

1. Attaching the smoke alarm to the bracket will automatically turn on the smoke alarm. Alternatively, you can manually turn the smoke alarm on, by placing the switch in the "ON" position.
2. Wait 2-3 seconds before pressing any buttons.



INSTALLATION

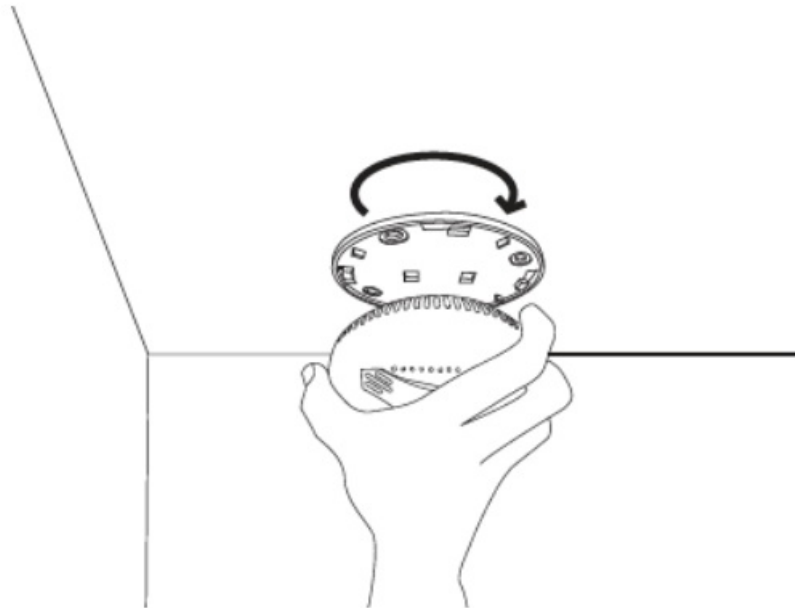
Be careful not to press the Test/Hush button on top of the alarm module unless you intend to do so. Pressing this button will cause the alarm to sound, the sound is very loud and may cause harm to your hearing.

Preparation

Determine how many alarms you need and where best to install them. Refer to the following pages for more information on recommended locations and locations to avoid. Note: Before installing this product, check which plugs and screws are best suited for the mounting surface.

Installation

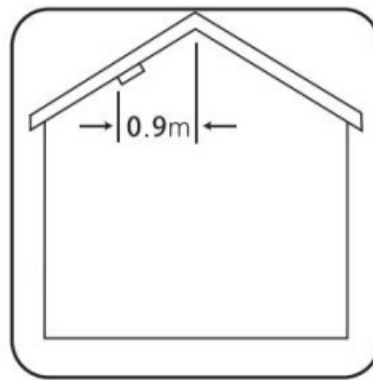
Disconnect the alarm module from the bracket by twisting the bracket counterclockwise. The smoke alarm will automatically power on when it is attached to the bracket.



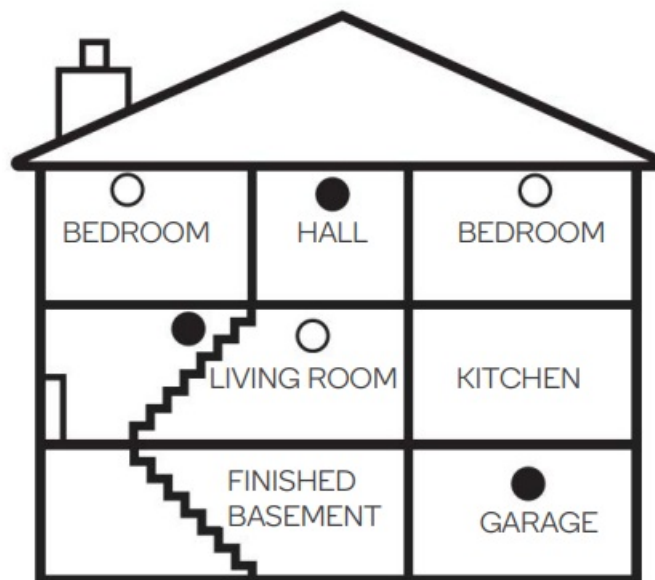
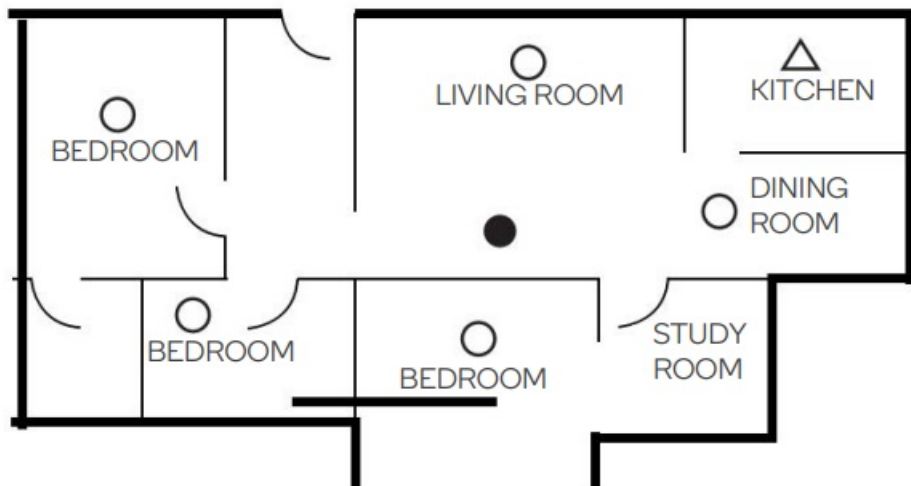
Where to install smoke detectors




We recommend at least one smoke alarm per floor, per room.

As a minimum, smoke alarms should be located between sleeping areas and potential sources of fire such as living rooms and kitchens. In single-storey homes with one sleeping area, a smoke alarm should be installed in the hallway, as close as possible to the living accommodation. To ensure audibility in bedrooms, no smoke alarm should be further than 3m away from any bedroom door. It may be necessary to install more than one smoke alarm, particularly if the hallway is more than 15m long. In single-storey homes with two separate sleeping areas, a minimum of two smoke alarms is required, one outside each sleeping area. In multilevel or split-level homes, as a minimum one smoke alarm should be installed on the ground floor between the staircase and any rooms in which a fire might start along with each storey in circulation areas that form part of an escape route (normally hallways and landings). Additional alarms should be installed in bedrooms in anticipation of fires caused by faulty wiring, lights, appliances or other hazards. For best protection, smoke alarms should be installed in every room in your home.



Single Story one sleeping area



	Additional smoke alarms for better protection
	Smoke alarms for limited protection
	HEAT ALARM

Locations to avoid

Do not locate smoke alarms:

- In turbulent streams of air such as near fans, heaters, doors and windows, etc. These can draw smoke away from the alarm.
- In high humidity areas such as bathrooms and shower rooms as high humidity can trigger the alarm, or where temperature exceeds 40°C or below 0°C.
- At the apex of an “A” frame ceiling. “Dead air” at the top may prevent smoke from reaching the alarm in time to provide early warning.
- Less than 300mm (12 inches) from the wall when mounted on the ceiling.
- In insect-infested areas, tiny insects may affect performance.
- In kitchens, boiler rooms, laundry rooms, garages. Combustion particles from cooking or car exhausts and dust and moisture could trigger the alarm.
- In very dusty or dirty areas, dirt and dust can build up and impair performance.
- Within 300mm (12 inches) of light fittings or room corners.
- In locations that would make routine testing or maintenance hazardous (eg, over a stairwell).
- On poorly insulated walls or ceilings.
- Near objects such as ceiling decorations which might impede the path of smoke to the alarm.
- Within 1500mm (5 feet) of fluorescent light fittings.

INTERCONNECTING ADDITIONAL UNITS

To connect several smoke detectors, press and hold the Test/Hush button on the primary unit until the Red indicator flashes 3 times then immediately release it.

The Red indicator will flash rapidly for 2 minutes while waiting for other devices to pair. If you need to end the pairing in advance, press the Test/Hush button again.

Press and hold the Test/Hush button on the secondary unit(s) until the Green indicator flashes 2 times then immediately release it. The unit will emit a long beep and the Red indicator will flash slowly. If the pairing is successful, the indicator will flash 3 times.

If the products have been previously paired with other groups, it will exit directly after the Green indicator flashes 4 times. For a successful match, you should clear paired data on all units first.

Note: The equipment has been matched before delivery.

Clearing paired data: Press and hold the Test/Hush button and wait for the Green indicator to flash 4 times, immediately release the button. If the paired data is cleared successfully, it will flash 3 times slowly and exit. Otherwise, repeat the above steps to clear.

FUNCTIONS

Low voltage alarm:

When the built-in battery voltage of the smoke detector is below 2.7V, the Red indicator flashes once every 50 seconds, accompanied by a beep sound. The app will also show a warning in the status bar.

Smoke alarm fault:

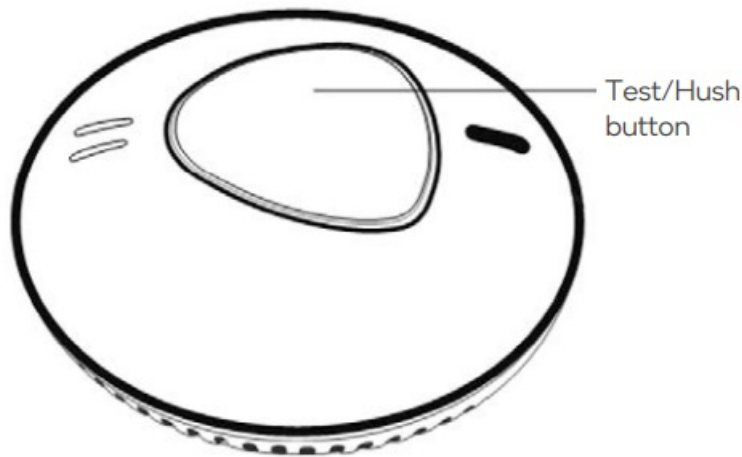
The LED of the smoke alarm flashes once every 8 seconds and is accompanied by a buzzer. The app status will display an alarm fault. If the device operates normal the Red LED indicator flashes once every 55 seconds.

CLEANING & CARE

This unit has been designed to be as maintenance-free as possible, but there are a few simple things you must do to keep it functioning properly.

Test each alarm at least once a week

Keep at arm's length distance to the alarm during the test. The alarm is loud in order to alert you in case of an emergency and can be harmful to your ears. Press the Test/Hush button for a duration of 2 seconds. The alarm will sound a few short loud beeps, upon releasing the button, the sound will stop. The app will receive a test signal after 10 seconds.



Reset the alarm

- If the test does not function properly, reset the alarm.
- If the test does not function properly after completing these steps, contact help.Kogan.com for support.

Cleaning

Clean the smoke alarm at least once a month; gently vacuum the outside of the smoke alarm using your household vacuum's soft brush accessory. Test the smoke alarm after cleaning. Never use water, cleaners or solvents since they may damage the unit. If the smoke alarm becomes contaminated by excessive dirt dust and/or grime and gives unwanted alarms, replace the unit immediately.

SPECIFICATIONS

- Working Voltage DC 3V Li-ion battery (non-replaceable, built into a detector)
- Standby current <12uA
- Alarm current <35mA
- Frequency range 433Mhz
- Low voltage threshold 2.7V
- Product lifespan 10 years
- Alarm sound >85dB
- Size 110mm x 42mm
- Interconnection limit 22 units
- Fire protection grade V-0
- Execute Criterion EN14604:2006 EN300 328 V2.1.1(2016-11) Activfire AS3786:2014 ISO7731

TROUBLESHOOTING

WARNING: In case of an emergency, contact your local fire department.


- Australia: Call 000 for Police, Fire, and Ambulance services.
- New Zealand: Call 111 for Police, Fire, and Ambulance services.

Reset procedure: If the device fails to access the network or crashes due to incorrect operation, long-press the middle button to reset the Wi-Fi connection. Follow the SmarterHome™ connection steps to reconnect.

Problem	Possible solution
Red LED flashes and the alarm sounds one beep every 50 seconds	The battery is flat – replace battery.
“NO BATTERY” alert, but batteries are inserted.	Ensure the plastic insulation sheets are removed between the battery and the terminals.
Smoke alarm is being triggered when the residents are cooking or showering.	<ul style="list-style-type: none">· Clean the detector, refer to Cleaning & Care section of this user guide.· Install the detector in another location, follow the guidelines for recommended locations and locations to avoid as stated in this user guide (“Installation” section).
Cannot interconnect to additional units.	<ul style="list-style-type: none">· Clear the paired data on all units.· Place the primary unit into pairing mode first.· Ensure all secondary units are connected within 1 minute of place the primary unit into pairing mode.

Need more information?

We hope that this user guide has given you the assistance needed for a simple set-up. For the most up-to-date guide for your product, as well as any additional assistance you may require, head online to help.kogan.com

 <p>USER GUIDE kogan.com</p> <p>KOGAN SMARTERHOME™ PHOTOELECTRIC ADD-ON INTERCONNECTED SMOKE ALARM</p>	<p>kogan.com KASKKALMRFA SmarterHome Add On Interconnected Smoke Alarm [pdf] User Guide</p> <p>KASKKALMRFA, KASKKALMRFA SmarterHome Add On Interconnected Smoke Alarm, SmarterHome Add On Interconnected Smoke Alarm, Add On Interconnected Smoke Alarm, Interconnected Smoke Alarm, Smoke Alarm, Alarm</p>
---	---

References

- [User Manual](#)