



# KOENIG PLUS NEURATH Staffeltisch Nesting Table Instruction Manual

[Home](#) » [KOENIG PLUS NEURATH](#) » KOENIG PLUS NEURATH Staffeltisch Nesting Table Instruction Manual 

KOENIG PLUS NEURATH Staffeltisch Nesting Table



## Contents

- 1 INTRODUCTION
- 2 AREA OF APPLICATION
- 3 SAFETY INSTRUCTIONS
- 4 POSITIONING THE TABLE
- 5 FOLDING UP THE TABLETOP
- 6 SPACE-SAVING STORAGE
- 7 MOTORISED HEIGHT ADJUSTMENT/ LIFT ADJUSTMENT WITH GAS SPRING
- 8 CLIP-DOWN CABLE TRAY
- 9 LINKING TABLES
- 10 CARE AND CLEANING INFORMATION
- 11 CUSTOMER SUPPORT
- 12 Documents / Resources
  - 12.1 References

## INTRODUCTION

**Dear customer,**

You have chosen a quality product from König+Neurath.

To ensure that your furniture performs to your complete satisfaction, please read the following instructions carefully and take note of the safety guidelines.

## AREA OF APPLICATION

The table is not suitable for use in the workshop or warehouse, nor in wet areas.

Observe DIN EN 15372 – test level 1+2 medium use.

## SAFETY INSTRUCTIONS



Please ensure that power cables are not trapped when connecting the table to the mains.



Do not allow any liquid to enter the table once connected to the mains.



Apply the castor brakes during use.



**Motorised adjustment/lift adjustment:**

The enclosed operating instructions must be read before initial operation!



**Table with motorised adjustment:**

To avoid the risk of crushing and shearing, the table must have a clearance of at least 25 mm to adjacent objects.



**Move table with motorised adjustment:**

First move tabletop to lowest position. Pull out the mains plug and stow the cable in such a way that it will not be damaged during moving.

Release castor brakes.



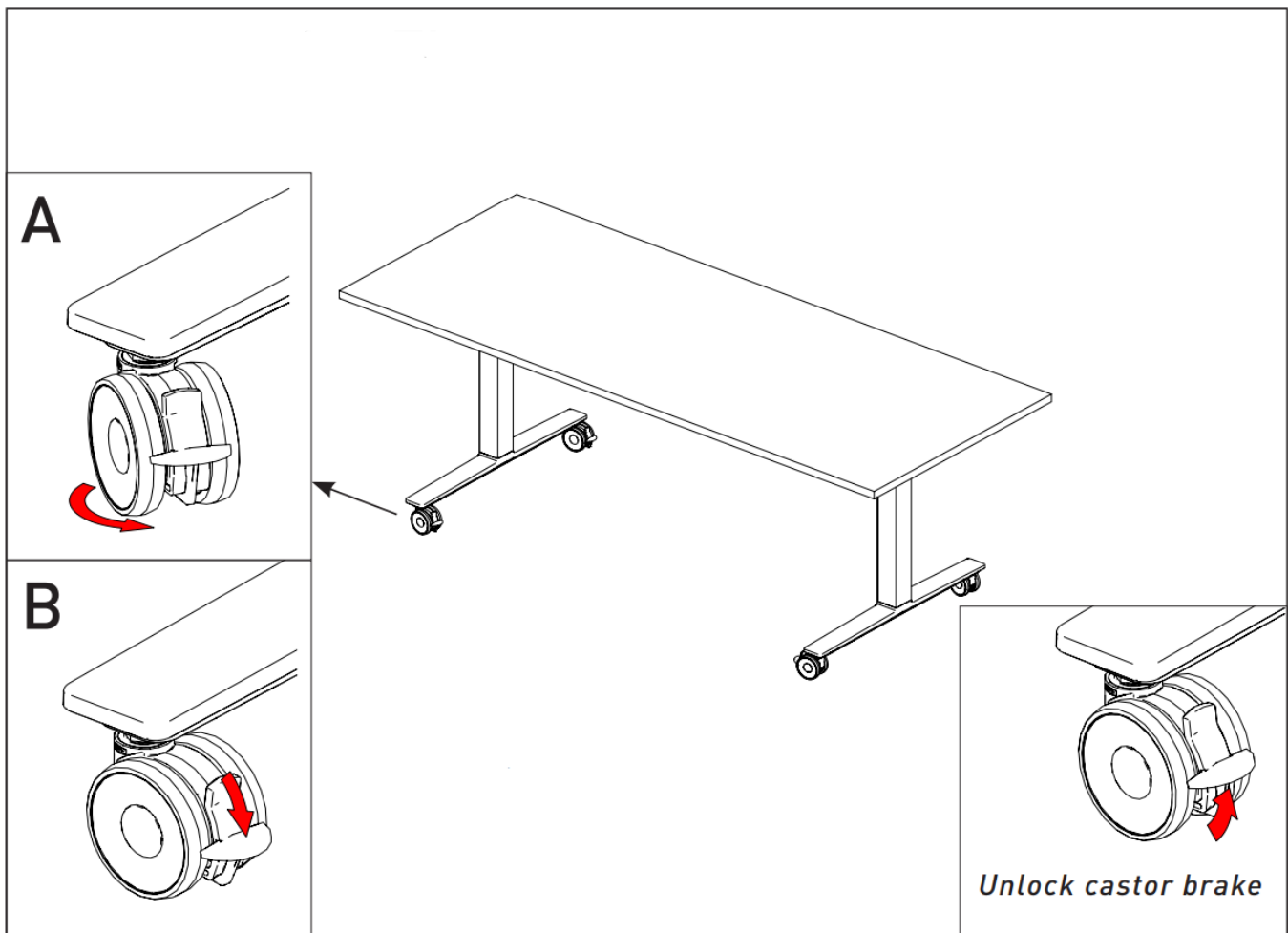
**Caution:**

The tabletop must not be folded up during motorised height adjustment.

## POSITIONING THE TABLE



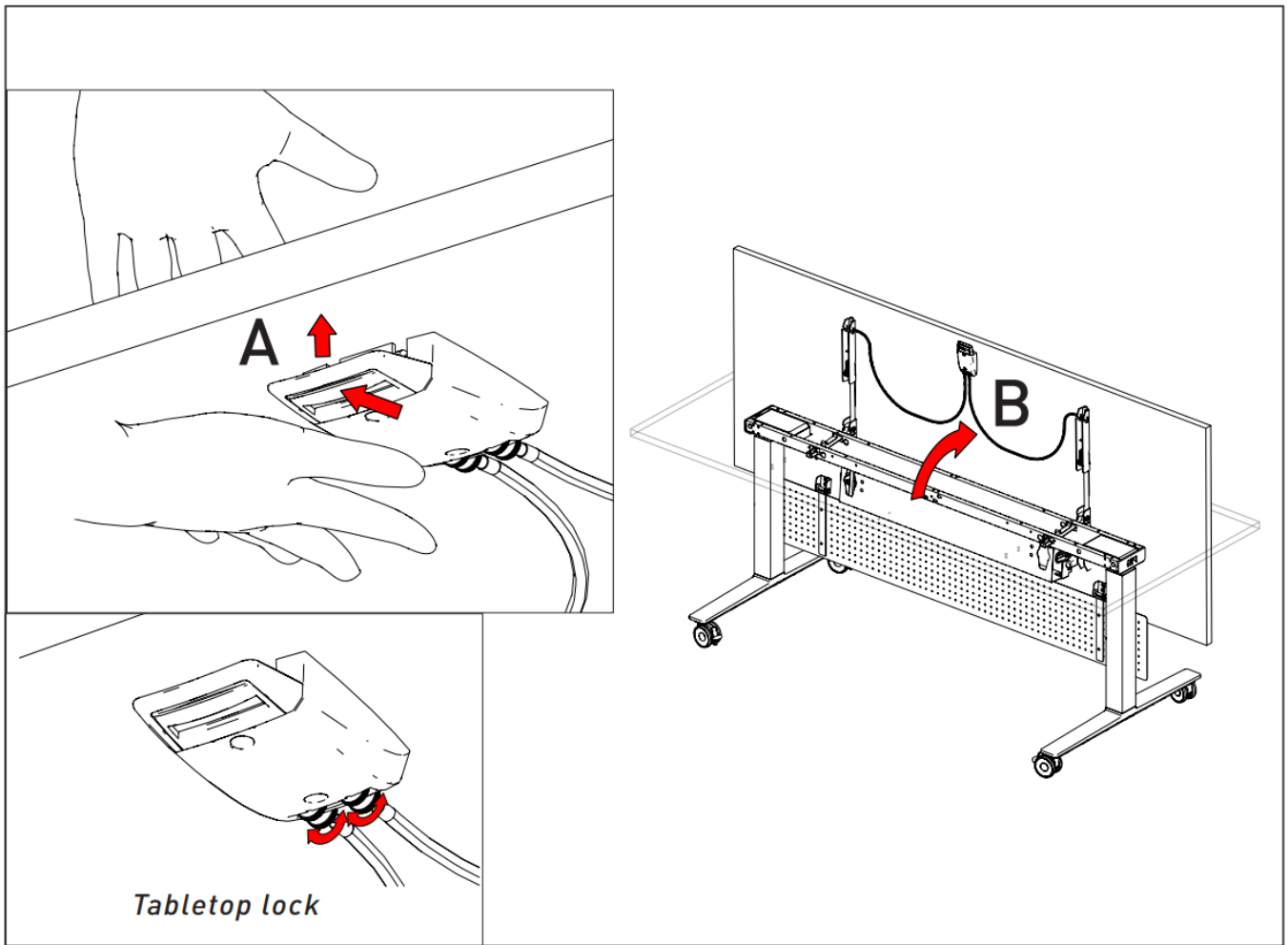
Turn the castors inwards and lock.



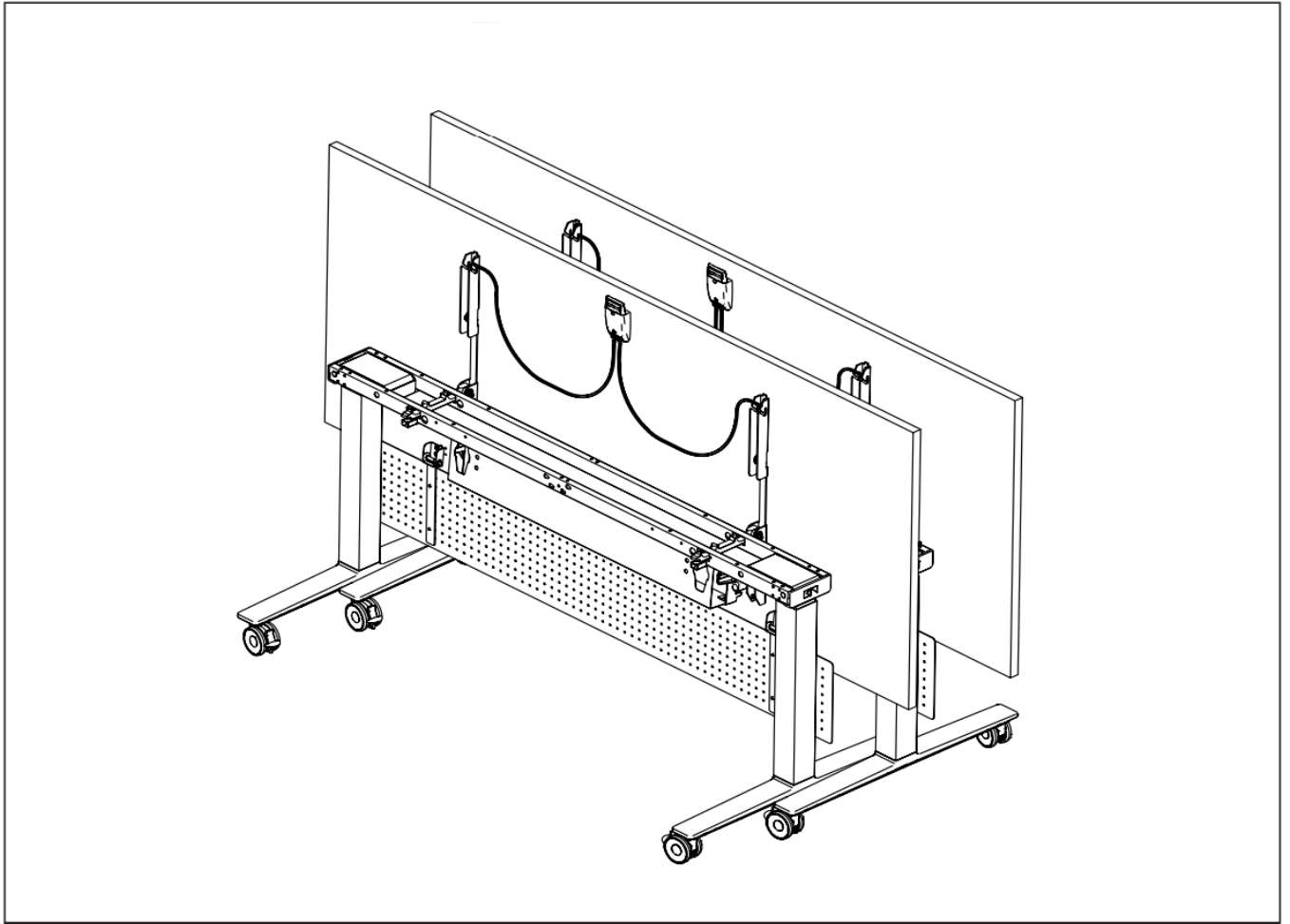
**Note:**

Screens should not be mounted on the table as there is a risk that it will tip over!

**FOLDING UP THE TABLETOP**



## SPACE-SAVING STORAGE

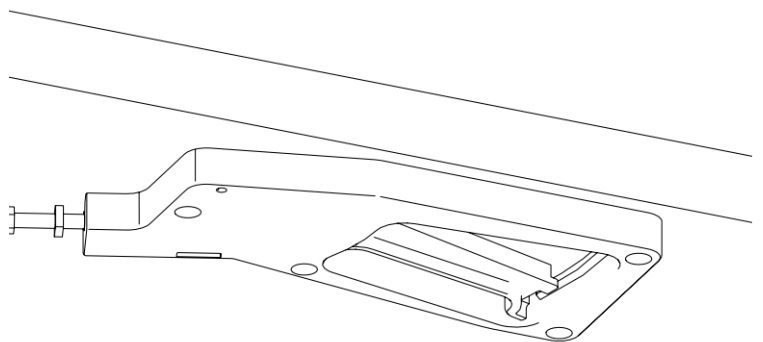
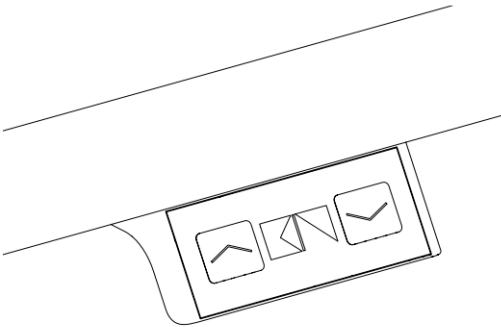


## MOTORISED HEIGHT ADJUSTMENT/ LIFT ADJUSTMENT WITH GAS SPRING

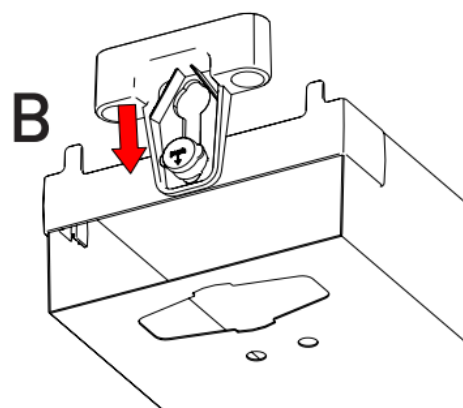
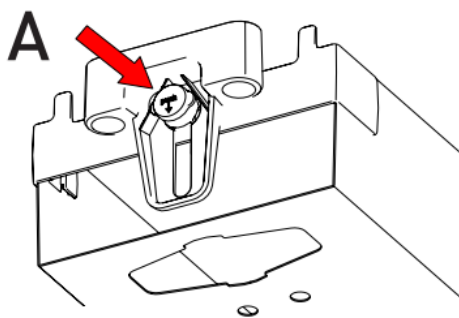


### Caution:

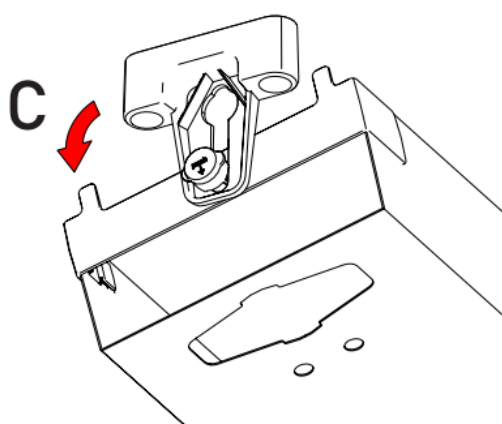
The enclosed operating instructions must be read before initial operation.



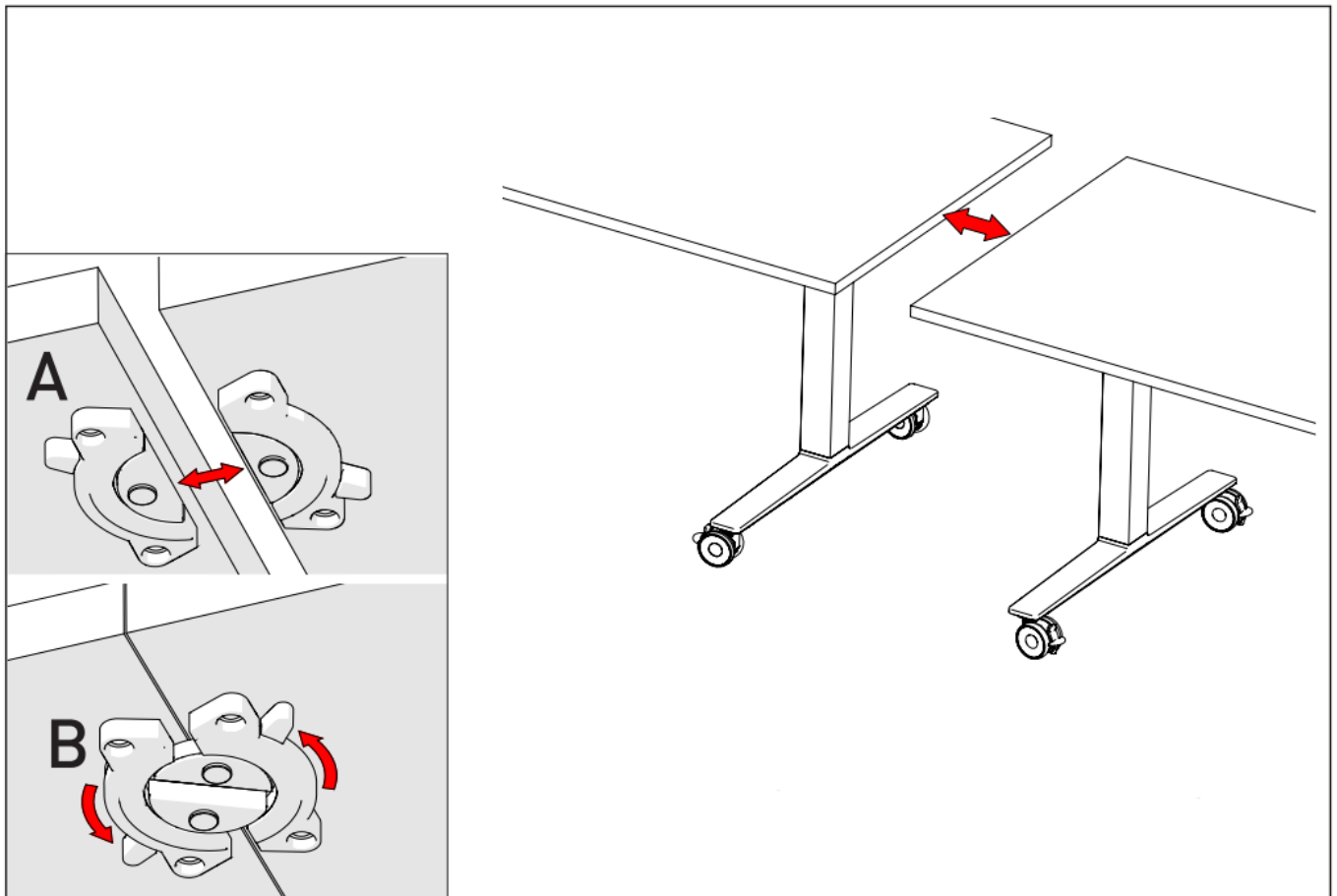
## CLIP-DOWN CABLE TRAY



*Press in both sides!*



## LINKING TABLES



## CARE AND CLEANING INFORMATION

### Melamine-coated and metal surfaces:

Clean the surface with a duster. Use warm water and/or a mild cleaner to remove marks, then wipe dry.

**Caution:** Do not use abrasive cleaners! This can cause permanent visible damage.

### Natural wood finishes:

Wipe the surface with a duster. Use a damp cloth and a neutral cleaning agent to remove soiling, then wipe dry.

**Caution:** Do not use abrasive cleaners! This can cause permanent visible damage. Avoid direct exposure of the natural wood finish to high temperatures and moisture.

Please note that the natural wood finish can change colour over time if exposed to UV rays. This is a natural ageing process of the wood.

No liability is accepted for damage to the finish caused by incorrect cleaning.

## CUSTOMER SUPPORT

### Deutschland

König + Neurath AG

Industriestraße 1–3

61184 Karben

T +49 6039 483-0

[info@koenig-neurath.de](mailto:info@koenig-neurath.de)

[koenig-neurath.com](http://koenig-neurath.com)

SAP-Nº 2221103

Stand 01/2024 / Last updated 01/2024



## Documents / Resources

	<p><a href="#">KOENIG PLUS NEURATH Staffeltisch Nesting Table</a> [pdf] Instruction Manual Staffeltisch Nesting Table, Staffeltisch Nesting Table, Nesting Table, Table</p>
---	---

## References

- [koenig-neurath.com](https://koenig-neurath.com)
- [STRATO - Domain reserved](#)
- [Geen webhosting actief](#)
- [User Manual](#)

### Manuals+, Privacy Policy

This website is an independent publication and is neither affiliated with nor endorsed by any of the trademark owners. The "Bluetooth®" word mark and logos are registered trademarks owned by Bluetooth SIG, Inc. The "Wi-Fi®" word mark and logos are registered trademarks owned by the Wi-Fi Alliance. Any use of these marks on this website does not imply any affiliation with or endorsement.