



# KODAK QY-WPMV Wifi Photo Frame User Manual

[Home](#) » [Kodak](#) » KODAK QY-WPMV Wifi Photo Frame User Manual 

## Contents

- [1 KODAK QY-WPMV Wifi Photo Frame](#)
- [2 Product Information](#)
- [3 Product Usage Instructions](#)
- [4 Technical Support](#)
- [5 Warranty](#)
- [6 Getting Started Guide \(GSG\)](#)
- [7 How to Use KODAK Digital Frame](#)
- [8 Common faults and troubleshooting](#)
- [9 FCC WARNINGS](#)
- [10 Documents / Resources](#)
  - [10.1 References](#)
- [11 Related Posts](#)



**KODAK QY-WPMV Wifi Photo Frame**



## Product Information

### Specifications:

- **Compliance:** Part 15 of the FCC Rules
- **Interference:** Must not cause harmful interference
- **Interference Acceptance:** Must accept any interference received
- **RF Radiation Exposure Limits:** Complies with FCC limits
- **Minimum Distance:** 20cm between radiator and body

## Product Usage Instructions

### 1. Reorient or Relocate the Receiving Antenna:

If you are experiencing interference or poor signal reception, try reorienting or relocating the receiving antenna. Experiment with different angles and positions to find the best signal strength.

### 2. Increase the Separation between the Equipment and Receiver:

If you notice interference or performance issues, increase the distance between the equipment and receiver. Ensure there are no obstructions or other devices causing interference in close proximity.

### 3. Connect the Equipment into a Different Circuit:

To minimize interference from the power source, connect the equipment into an outlet on a circuit different from the one to which the receiver is connected. This can help reduce electrical noise and improve overall performance.

### 4. Consult the Dealer or Technician:

If you have followed the previous steps and are still experiencing difficulties, it is recommended to consult the dealer or an experienced radio/TV technician for further assistance. They can provide specialized guidance based on your specific setup and environment.

## Frequently Asked Questions (FAQ)

### 1. Q: What does it mean that this device complies with part 15 of the FCC Rules?

A: Compliance with part 15 of the FCC Rules ensures that the device operates within the defined limits for radio frequency emissions. It must not cause harmful interference to other devices and must accept any interference

received.

## 2. Q: What should be the minimum distance between the radiator and my body?

A: It is recommended to maintain a minimum distance of 20cm between the radiator (source of RF radiation) and any part of your body. This helps minimize potential health risks associated with prolonged exposure to RF radiation.

- The Kodak trademark, logo and trade dress are used under license from Kodak. ©2023 Maxtalent Industrial Limited. All rights reserved,
- All information contained in this document is subject to change without notice
  - Made In China FC IC CE RoHS

## Technical Support

If you need further assistance, please contact the support department

- **E-mail:** [support@maxtdigital.com](mailto:support@maxtdigital.com)
- **Web:** [www.maxtdigital.com/kodak](http://www.maxtdigital.com/kodak)
- All information contained in this document is subject to change without notice.

## Radio and TV Interference Statement

This equipment has been tested and found to comply with the limits for a Class B digital device, pursuant to part 15 of the FCC Rules. These limits are designed to provide reasonable protection against harmful interference in a residential installation. This equipment generates, uses and can radiate radio frequency energy and, if not installed and used in accordance with the instructions, may cause harmful interference to radio communications. However, there is no guarantee that interference will not occur in a particular installation.

- If this equipment does cause harmful interference to radio or television reception, which can be determined by turning the equipment off and on, the user is encouraged to try to correct the interference by one or more of the following measures:
  - Reorient or relocate the receiving antenna.
  - Increase the separation between the equipment and receiver.
  - Connect the equipment into an outlet on a circuit different from that to which the receiver is connected.
  - Consult the dealer or an experienced radio/TV technician for help

**Caution:** Any changes or modifications to this device not explicitly approved by manufacturer could void your authority to operate this equipment.

This device complies with part 15 of the FCC Rules. Operation is subject to the following two conditions:

1. This device may not cause harmful interference, and
2. This device must accept any interference received, including interference that may cause undesired operation.

The device has been evaluated to meet general RF exposure requirement. The device can be used in portable exposure condition without restriction.

## Warranty

Maxtalent warrants this product against defect in material or workmanship for 1 YEAR from the date of purchase.

This warranty becomes invalid if the factory-supplied serial number or “warranty void” sticker has been removed or altered on the product.

This warranty does not cover:

- Cosmetic damage or damage due to acts of God.
- Accident misuse, abuse, negligence or modification of any part of the product.
- Damage due to improper operation or maintenance, connection to improper equipment or attempted repair by anyone other than Maxtalent or appointed.
- Products sold AS IS or WITH FAULTS.

IN NO EVENT SHALL MAXTALENT LIABILITY EXCEED THE PRICE PAID FOR THE PRODUCT FROM DIRECT INDIRECT, SPECIAL, INCIDENTAL OR CONSEQUENTIAL DAMAGES RESULTING FROM THE USE OF THE PRODUCT, IT'S ACCOMPANYING SOFTWARE, OR IT'S DOCUMENTATION

- Maxtalent makes no warranty or representation, expressed, implied, or statutory, with respect to products, contents or use of this documentation and all accompanying software, and specifically disclaims it's quality, performance, merchantability, or fitness for any particular purpose
- For more information, please visit:
  - [www.maxtdigital.com/kodak](http://www.maxtdigital.com/kodak)
- All information contained in this document is subject to change without notice.
  - **version** : V2.0

## Getting Started Guide (GSG)

### 1. Step: 1: Connect power Supply

The Product will be on automatically after connecting the power connector to the DC port on the device.

### 2. Step 2: Set the Product according to guide

After the Product displays startup animation, follow the activation wizard to start setting.

1. Select language;
2. Select time zone;
3. Select available WIFI and enter the password for connection;

**Note:** WIFI is required for some functions of the Product please connect WIFI first.

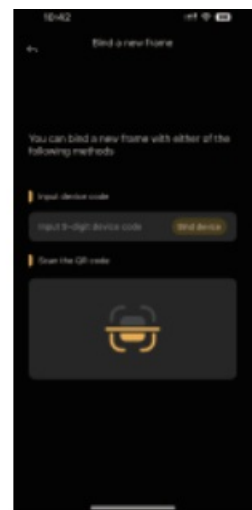
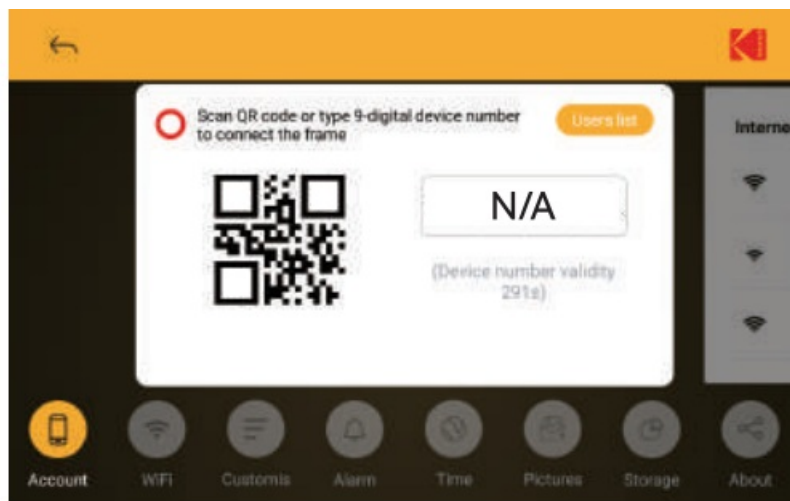
## Download APP

Search “KODAK Digital Frame” from Apple APP store and Google Play to download APP, Open the APP and sign up a new account. Log In directly, If you've already had one.



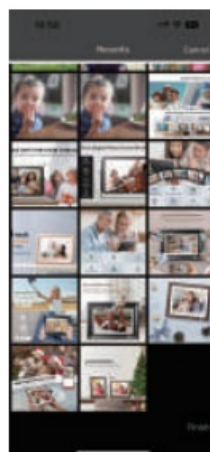
## Frame Binding

Open Frame Settings – User Account interface, turn on KODAK Digital Frame APP on your mobile phone, scan the QR code on the Product or enter the Product No. to bind the Product (the Product No. will be displayed after connecting WIFI successfully). Upload photos, music and videos to the Product after successful binding



## Upload

1. Click "Upload" button and select "Camera" to take a new photo or select "Photo" to select the phone (s) you want to send from your local album.



2. Selecting the photos to be uploaded, click the lower right corner of the "Finish" button, and then crop the photos, add labels and other editing, and then click the upper right corner of the "Next", select the frame and click "Upload", send photos to the designated frame. Photos can be sent up to 10 at a time, videos can be sent up to 15 seconds, and music can be sent up to 10 songs at a time. This photo frame can be uploaded via mobile phone APP, email. and can also read files from an external SD card or USB stick, or connect to a computer to copy files using the data cable in the accessory. The files in the computer can be grouped or named according to your preference and then copied to the photo frame or SD card or U disk. There is no limit to the number of photos and video playback time.

## How to Use KODAK Digital Frame

1. Main Interface See the main menu below. Access different functions by touching the icons on the panel.



The menu includes Album, Music, Video, Calendar, Weather and Setup.

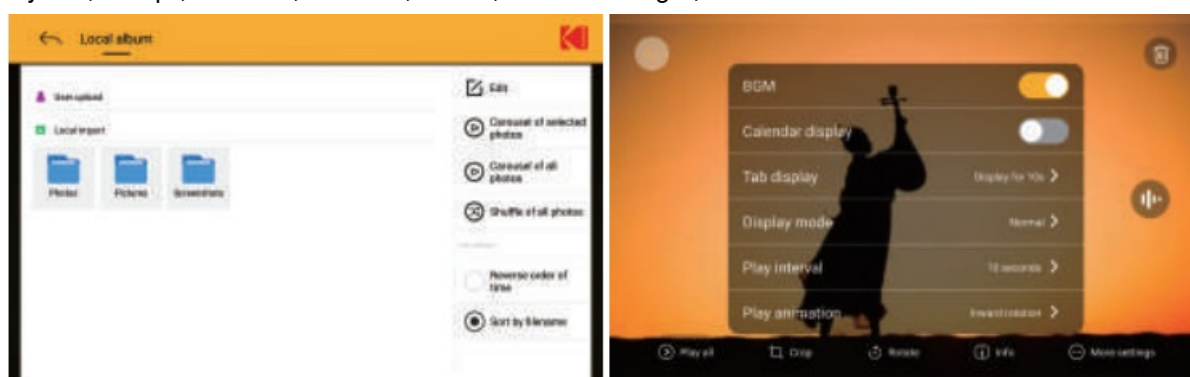
**Note:** Battery icon is displayed in the upper right corner of the main interface of RWF-108H/ RWF-109

## 2. Album

Click the “Album” icon on the main interface to turn on the album, where you can upload photos from users or import them locally. Photos uploaded by users can be grouped so that they could easily find photos of each family member from “User Uploads”. All photos in the group can be sorted based on reverse chronological order or by file name.

**Note:**

1. Local import includes photos downloaded to the Product through computer copy and USE flash disk in SD card;
2. “Reverse chronological order” means sorting photos from latest to earliest shooting time. File name order means sorting photos in the order of letters, numbers and Chinese characters contained in the name of these photos;
3. The word “NEW” in the upper right corner of photo means that the photo has not been viewed after being uploaded to the Product but will disappear after viewing the phone by clicking “Open”.
4. In “Editing”, you can copy or move photos locally from the Product to an SD card or USB flash disk, download photos from an SD card or USB flash disk to the Product, or delete photos.
5. By selecting and clicking a photo in any group, you can view or set such photo. Photo settings include “Play All”, “Crop”, “Rotate”, “Delete”, “Infor”, “More Settings”, etc.



**Play All** — The slideshow plays all photos in the group that contains the current photo.

**Crop** — Move the box and crop it to the size needed.

**Rotate** — Rotate the current photo to the left or right.

**Delete** — Delete the current photo (s).

**Infor** — Display information of the current photo (name, revision time and storage path)

**More Settings** — Turn on or off BGM, Calendar Display, select label display time, switching time of slideshow, switch display mode, play effect, etc.

### 3. Music

Click on the “Music” icon on the main interface to enable the music function. In the music function interface, music files are displayed by group based on local music, SD card and USB flash disk.

1. Local music includes music copied from computer, downloaded from SD card and USB flash disk, and uploaded to the Product by mobile APP.
2. Click the folder under the music file group to open it, and then click the intended music file to play.
3. Switch the loop mode, last song, pause, next song, volume adjustment, etc. on music play interface.
4. Click the “Back” button in the upper left corner to minimize the play page to the bottom of the main interface of music player.
5. In “Editing” interface, copy or move music locally from the Product to SD card or USB flash disk, download music from an SD card or USB flash disk to the Product, or delete music.

### 4. Video

Click the “Video” icon on the main interface to enable video function. On the video function interface, video files are displayed in groups based on local videos, SD card and USB flash disk. Local video is displayed in groups based on user upload and local import. Note: Local import includes videos downloaded to the Product via computer copy, SD card and USB flash drive.

1. Click the folder in the group containing the video to open it, and then click the intended video to play.
2. The word “NEW” in the upper right corner of video means that the video uploaded to the Product has not been viewed and will disappear after clicking the video.
3. On the video play interface, switch last video, play or pause, or next video, select the display mode, adjust volume, switch the loop mode, etc.
4. In “Editing”, copy or move videos locally from the Product to SD card or USB flash disk, download videos locally from SD card or USB flash disk to the Product, or delete videos.

### 5. Calendar

Click the “Calendar” icon on the main interface to open it. Click the left and right arrows at the right top to switch months, and click “Today” icon at the right of the right arrow to return to the current date. Click the “Album/Clock” icon at the top of the left side to switch the photo carousel or clock on the left side of the calendar interface.

### 6. Clock

Click the “Time” icon in the upper right corner of the main interface to enter settings of “Time Zone”. Set the date, time, time zone, time format, or select automatic date and time.

### 7. Weather

Click the “Weather” icon on the main interface or the weather data icon in the upper right corner to enter the weather forecast page. After connecting Wifi, the weather forecast will display weather of the city for three days automatically through the WiFi IP address. Click the “Refresh” icon or “Search” icon in the upper right corner to refresh the weather data or add or switch weather for other cities. Click the “C°/ °F” icon to switch temperature units.

### 8. Setup

There're many options in the Setup menu, which can be used to customize the way of how to operate your KODAK Digital Frame. Click the setting item icon or slide the setting page to switch setting items, which include “User Account”, “WIFI”, “Customization”, “Alarm Clock”, “Time Zone”, “Upload Photos from “Storage Space”, “About”, etc.



**User Account:** Display the bound QR code of the Product or device code and User List. Wi-Fi: Enable/disable or replace WiFi connection.

**Customization:** Set the language, screen saver time, screen saver type, display mode, play time interval, play effect, startup auto-play type, timing sleep time, brightness, volume and whether to add new photos to carousel to automatically.

**Note:** Timing sleep is set according to “time”; time of entering the automatic sleep follows the screen saver time. If the screen saver time is set as “1 min after inactivity”, the Product will enter the sleep state 1 min after the scheduled sleep time expires. If the screen saver time is set as “never”, timed sleep will not enter sleep state

**Alarm Clock:** Add and set the alarm clock time.

**Time Zone:** Set date, time, time zone and time format.

**Photo Transmission:** Transmit photos to the Product via email addresses on the Product.

**Mailboxes supported at present:**

- [@Outlook.com/@iCloud.com/@Proton.me/@hotmail.com/@163.com/@qq.com/@gmail.com/@126.co](#)
- **Storage Space:** Display the space data (used/available) of internal storage, cloud transmission traffic, SD card and USB flash drive.
- **Note:** Cloud traffic refers to total traffic charged by the server vendor for downloading photos from the server to the Product. The Product provides 10GB cloud traffic free of charge. Users could purchase more via designated channels (APP) after using it up. and trainee system ride or store the actor seen the Products name, update hardware
- **Note:** All user data on the Product will be cleared after choosing and executing “Clear All Data”

## Common faults and troubleshooting

Faults	Troubleshooting
The Product cannot be started after power-on	Check whether the power adapter is normally connected or contact after-sales service specialist
The Product remains at logo screen after startup	Restart the Product or contact after-sales service specialist
WiFi cannot be connected	Check WiFi password
No network available even if WiFi is displayed connected	Check the network environment or use another WiFi
SD card/USB flash disk does not work	Check whether the SD card is inserted reversely or whether the connecting finger of SD card/USB flash disk is dirty. Reinsert it after wiping
SD card/USB flash disk can be displayed after inserting but no data is displayed	Connect the SD card/USB flash disk to the computer to check whether it is in FAT32 or NTFS, or try again after formatting it directly into FAT32 or NTFS.
Verification code cannot be received when signing up an account in APP	Check the spam email or resend a verification code, or contact after-sales service specialist
Fail to set password when signing up an account in APP	Change password
The APP has been uploaded successfully, but no corresponding photos are received in the Product	Check network connection of the Product or check it in a few minutes
Timing sleep function cannot be used normally	Check whether the time of set timing sleep is consistent with the Product, and whether the screen saver time is set to “never”

- For more help, please feel free to contact our technical department.



- **E-mail:** [support@maxtdigital.com](mailto:support@maxtdigital.com)
- **Website:** [www.maxtdigital.com/kodak](http://www.maxtdigital.com/kodak)
- This document is subject to change without a prior notice.

This device complies with part 15 of the FCC Rules. Operation is subject to the following two conditions

1. This device may not cause harmful interference, and
2. This device must accept any interference received, including interference that may cause undesired operation.

**NOTE:** This equipment has been tested and found to comply with the limits for a Class B digital device, pursuant to Part 15 of the FCC Rules.


These limits are designed to provide reasonable protection against harmful interference in a residential installation. This equipment generates, uses and can radiate radio frequency energy and, if not installed and used in accordance with the instructions, may cause harmful interference to radio communications. However, there is no guarantee that interference will not occur in a particular installation.

## FCC WARNINGS

- If this equipment does cause harmful interference to radio or television reception, which can be determined by turning the equipment off and on, the user is encouraged to try to correct the interference by one or more of the following measures:
  - Reorient or relocate the receiving antenna.
  - Increase the separation between the equipment and receiver.
  - Connect the equipment into an outlet on a circuit different from that to which the receiver is connected.
  - Consult the dealer or an experienced radio/TV technician for help.

Changes or modifications not expressly approved by the party responsible for compliance could void the user's authority to operate the equipment. This equipment complies with the FCC RF radiation exposure limits set forth for an uncontrolled environment. This equipment should be installed and operated with a minimum distance of 20cm between the radiator and any part of your body

## Documents / Resources

	<p><b><a href="#">KODAK QY-WPMV Wifi Photo Frame</a></b> [pdf] User Manual            QY-WPMV Wifi Photo Frame, QY-WPMV, Wifi Photo Frame, Photo Frame, Frame</p>
---	---

## References

- [User Manual](#)