



KOBALT 2368776 72-In Work Table Instruction Manual

[Home](#) » [Kobalt](#) 

Contents

- 1 KOBALT 2368776 72-In Work Table
- 2 Product Information
- 3 Product Specifications
- 4 Safety Information
- 5 Contact Information
- 6 PRODUCT SPECIFICATIONS
- 7 PACKAGE CONTENTS
- 8 HARDWARE CONTENTS
- 9 SAFETY INFORMATION
- 10 ASSEMBLY INSTRUCTIONS
- 11 TROUBLESHOOTING
- 12 Documents / Resources

KOBALT®

KOBALT 2368776 72-In Work Table



Product Information

The KOBALT 72-IN Work Table is a sturdy work surface that can support up to 1522 lbs. It has a solid wood top, side panels, angle support, back strut, and leg leveler assembly. It is available in two colors, silver and black, and two models, 19004 and 19196. The assembly time for the product is estimated to be 30 minutes, and it requires a 5mm hex key wrench, drill, and adjustable wrench for assembly.

Product Specifications

- **Maximum load for each hook:** 4 lbs.
- **Maximum load for each side panel:** 11 lbs.
- www.severin.com1500 lbs.
- **Maximum total load:** 1522 lbs.

Package Contents

The package includes a solid wood top, side panels, left and right legs, angle support, back strut, leg leveler assembly, M8 x 20 mm bolts (8+2), M6 x 15 mm bolts (28+2), and M6 mm nuts (20+2).

Safety Information

It is important to read and understand the entire manual before attempting to assemble or operate this product. Failure to follow the instructions may result in serious injury. All warnings and instructions should be saved for future reference.

Product Usage Instructions

1. Before beginning assembly of the product, ensure all parts are present by comparing them with the package contents list and hardware contents.
2. If any part is missing or damaged, do not attempt to assemble the product and contact customer service for

replacement parts.

3. It is recommended to assemble the product on a clean, soft surface, such as a piece of cardboard.
4. Attach the side panels to the solid wood top using the M8 x 20 mm bolts.
5. Determine the desired location for the right leg, insert it into the side panel, and tighten it with M6 x 15 mm bolts and M6 mm nuts. Repeat for the left leg.
6. Use M6 x 15 mm bolts to fix angle supports to side panels and solid wood top. Place the unit upright.
7. Attach the back strut to the back of the left leg and right leg with M6 x 15 mm bolts and M6 mm nuts.
8. Carry the table to the desired place and use the leg leveler assembly to adjust the height of the table from 32.8 inches to 40.8 inches in 1-inch increments.

Contact Information

If you have any questions, problems, or missing parts, call KOBALT's customer service department at 888-3KOBALT (888-356-2258), Monday – Sunday, 8 a.m. – 8 p.m., EST. You can also email them at partsplus@lowes.com.

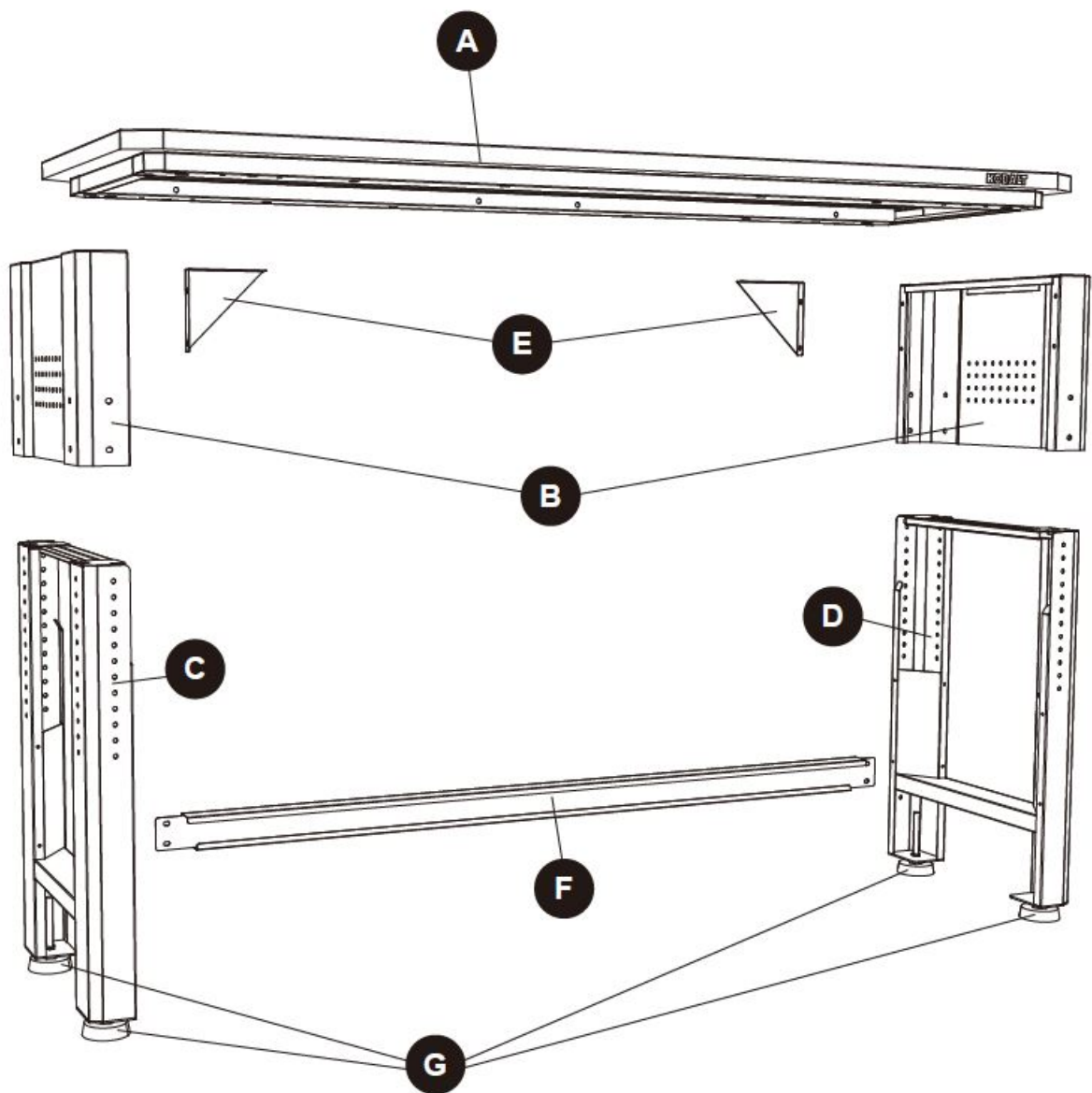
PRODUCT SPECIFICATIONS

COMPONENTS	SPECIFICATIONS
Maximum load for each hook	4 lbs.
Maximum load for each side panel	11 lbs.
Maximum load for wood top	1500 lbs.
Maximum total load	1522 lbs.

Note: Specify the item number when ordering the product due to the different colors:

COLOR	ITEM #	MODEL #
Silver	2368776	19004
Black	5193456	19196

PACKAGE CONTENTS



PART	DESCRIPTION	QUANTITY
A	Solid wood top	1
B	Side panel	2
C	Left leg	1
D	Right leg	1
E	Angle support	2
F	Back strut	1
G	Leg leveler assembly	4

HARDWARE CONTENTS

(shown actual size)



M8 x 20 mm Bolt
Qty. 8+2



M6 x 15 mm Bolt
Qty. 28+2



M6 mm Nut
Qty. 20+2

SAFETY INFORMATION

Please read and understand this entire manual before attempting to assemble or operate this product. Failure to follow may result in serious injury. Save all warnings and instructions for future reference.

WARNING

- Do not stand on, step on, or alter this unit for anything outside the designed function of usage.
- Use care when handling and assembling metal plates.
- The metal may have sharp edges or corners. The use of protective gloves is recommended.
- Always remember to use proper lifting techniques when moving the boxed or assembled unit.

CAUTION

- Do not exceed maximum load capacities listed in Product Specifications on Page 2. Evenly distribute load on table to avoid tipping.
- Do not knock on work top which will damage the work top.
- Use only on flat, level and hard surface capable of supporting the work table and any items placed on work table. Maintain proper footing and balance at all times.
- For indoor use only. Keep away from damp, wet or rainy conditions.
- Do not place flammable liquids on the work table unless they are secured in an approved container.
- Do not place gasoline on the unit under any circumstances.
- Assemble only according to these instructions. Improper assembly can create hazards.
- Wear ANSI-approved safety goggles and heavy duty work gloves during assembly and use.
- Keep bystanders out of the area during assembly and use.
- Do not assemble and use when tired or under the influence of drugs or medication.
- The product is not a toy. Do not allow children to play with, on or near the unit.
- Inspect before every use, do not use if parts are loose or damaged.

PREPARATION

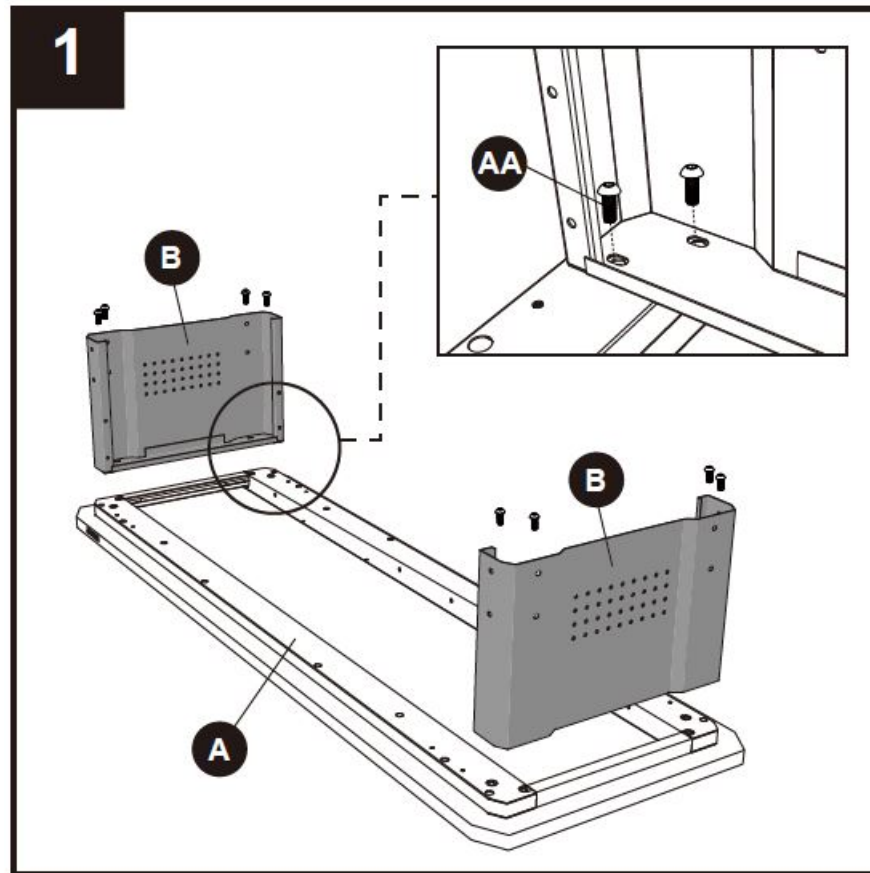
Before beginning assembly of product, make sure all parts are present. Compare parts with package contents list and hardware contents above. If any part is missing or damaged, do not attempt to assemble the product. Contact customer service for replacement parts. It is recommended that this product to be assembled on a clean, soft surface, such as a piece of cardboard

Estimated Assembly Time: 30 minutes (does not include unpacking time)

- **Tools Required for Assembly (included):** 5mm Hex key wrench
- **Tools Required for Assembly (not included):** Drill, Adjustable wrench

ASSEMBLY INSTRUCTIONS

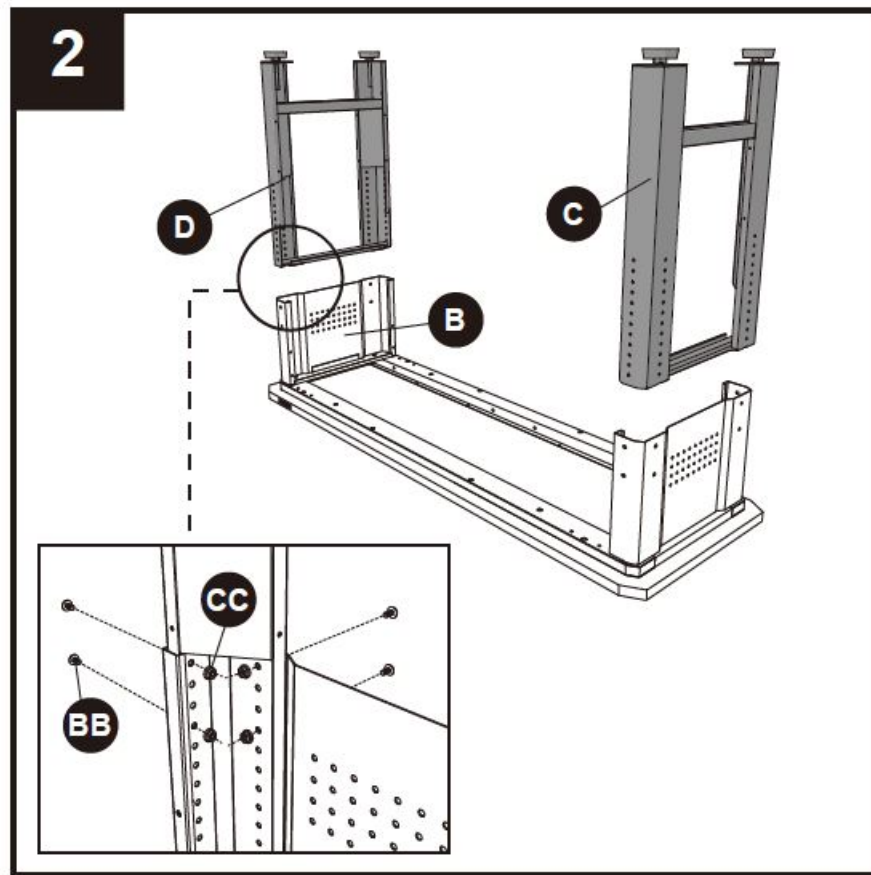
1. Attach side panels (B) to the solid wood top (A) with M8 x 20 mm bolts (AA). Note: Be sure to keep the solid wood top (A) upside down on a soft surface, such as carpeting or a piece of cardboard, to protect it from scratches. Ensure the bolts are screwed tightly. This applies to all the bolts used in this unit.M



M8 x 20 mm Bolt

2. Determine the desired location for the right leg (D), insert it into side panel (B), and tighten with M6 x 15 mm bolts (BB) and M6 mm nuts (CC). Repeat for the left leg (C).

Note: This table is adjustable in height from 32.8 inch to 40.8 inch in 1 inch increments. The left leg (C) and right leg (D) should be at the same height after installation.

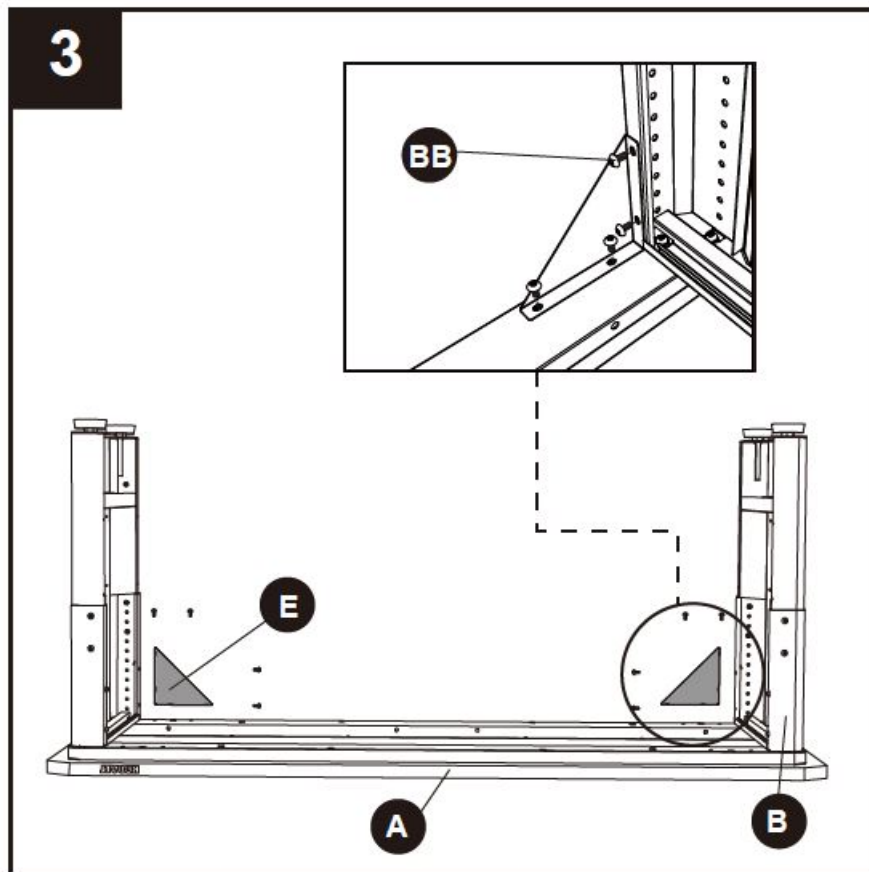


Hardware Used


M6 x 15 mm Bolt  x 16

M6 mm Nut  x 16

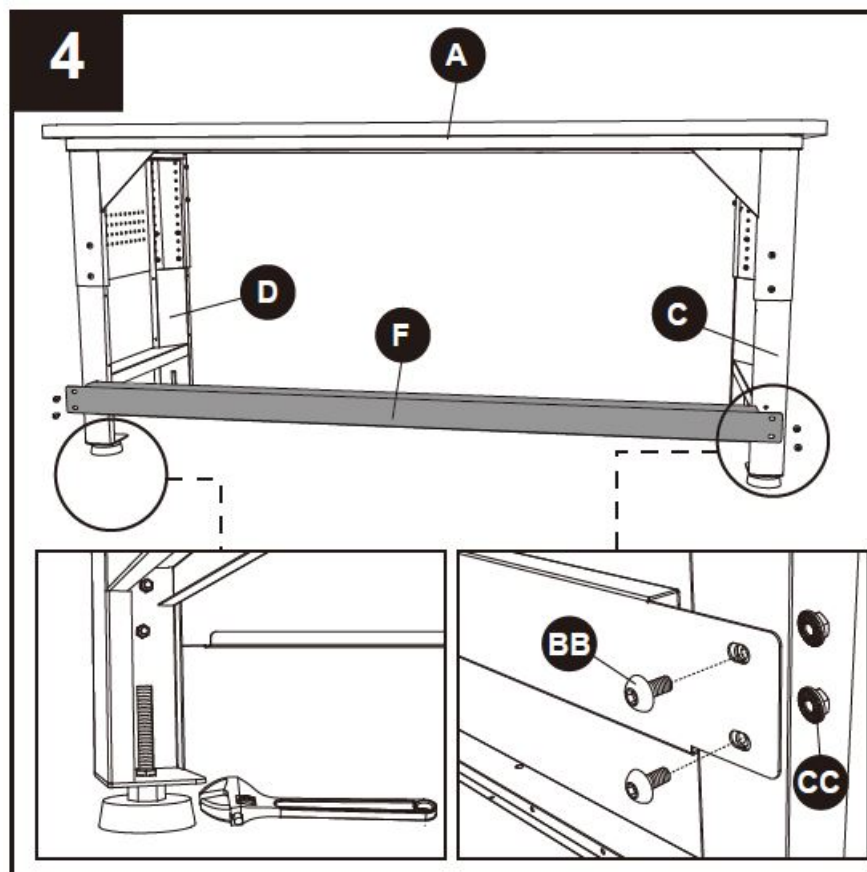
3. Use M6 x 15 mm bolts (BB) to fix angel supports (E) to side panels (B) and solid wood top (A). Place the unit upright.



Hardware Used

M6 x 15 mm Bolt  x 8

4. Attach the back strut (F) to the back of the left leg (C) and right leg (D) with M6 x 15 mm bolts (BB) and M6 mm nuts (CC). Carry the table to the desired place and see if the solid wood top (A) is level. If not due to uneven floor, use an adjustable wrench (not included) to adjust the hex nut until the top is level.



TROUBLESHOOTING

PROBLEM	POSSIBLE CAUSE	CORRECTIVE ACTION
Bolt(s) cannot align into the hole(s).	<ol style="list-style-type: none"> 1. Bolt is damaged. 2. Bolt does not go vertically into the hole(s). 	<ol style="list-style-type: none"> 1. Change bolt(s). 2. Adjust the parts and make sure the bolt(s) go vertically into the hole(s).
Work table is not stable enough.	<ol style="list-style-type: none"> 1. Bolt(s) loose. 2. The ground is uneven or too soft. 	<ol style="list-style-type: none"> 1. Fasten all bolts tightly by hex wrench or screwdriver. 2. Adjust the hex nut in the leg leveler assembly to offset the floor issue.

LIFETIME HASSLE-FREE GUARANTEE

This product carries a lifetime warranty. If the product is found to be defective, please call 888-3KOBALT, 8 a.m. – 8 p.m., EST, Monday – Sunday, or return the item to the place of purchase with a copy of the original sales receipt. The distributor will, at its option, repair or replace the product. This warranty gives you specific legal rights, and you may have other rights that vary from state to state.

REPLACEMENT PARTS LIST


For replacement parts, call our customer service at 888-3KOBALT, 8 a.m. – 8 p.m., EST, Monday – Sunday. You could also contact us at partsplus@lowes.com.

PART	DESCRIPTION	PART #
A	Solid wood top	2368776-A
B	Side panel	2368776-B
C	Left leg	2368776-C
D	Right leg	2368776-D
E	Angle support	2368776-E
F	Back strut	2368776-F
G	Leg leveler assembly	106453-K
AA	M8 x 20 mm Bolt	2368776-HDWR
BB	M6 x 15 mm Bolt	2368776-HDWR
CC	M6 mm Nut	2368776-HDWR

Note: Some parts are not interchangeable because of different colors. Specify part number when ordering:

COLOR	ITEM #	DESCRIPTION	PART #
Black	5193456	Left leg	5193456-C
Black	5193456	Right leg	5193456-D
Black	5193456	Back strut	5193456-F

Documents / Resources

 <p>KOBALT</p> <p>72-IN WORK TABLE</p> <p>2368776</p> <p>ATTACH YOUR RECEIPT HERE</p> <p>WARNING: This product is not intended for use as a work surface. It is not designed to support heavy loads. Use only as intended. The manufacturer is not responsible for any damage or injury caused by misuse.</p>	<p>KOBALT 2368776 72-In Work Table [pdf] Instruction Manual</p> <p>2368776 72-In Work Table, 2368776, 72-In Work Table, Work Table, Table</p>
---	---