



# KMDES WTM-W1-A Wireless Digital Microscope User Manual

[Home](#) » [KMDES](#) » KMDES WTM-W1-A Wireless Digital Microscope User Manual 

## Contents

- [1 KMDES WTM-W1-A Wireless Digital Microscope](#)
- [2 Product Information](#)
- [3 Product Usage Instructions](#)
- [4 Metal Bracket](#)
- [5 Packing List](#)
- [6 Bracket Installation](#)
- [7 Parts Description](#)
- [8 Detailed Operation](#)
  - [8.1 Work with cell phone](#)
- [9 Introduction of the APP](#)
  - [9.1 Work with Windows](#)
  - [9.2 Work with Mac/iMac](#)
- [10 Product Parameters](#)
- [11 Troubleshoot the Microscope](#)
- [12 Documents / Resources](#)
  - [12.1 References](#)
- [13 Related Posts](#)

**KMDES**

**KMDES WTM-W1-A Wireless Digital Microscope**



## Product Information

### Specifications:

- Model: WTM-W1-A
- Type: WiFi digital microscope
- Bracket: Plastic/Metal
- Interface: Type-C
- Power: Rechargeable battery

## Product Usage Instructions

### Read Me First

Thank you for purchasing the WTM-W1-A WiFi digital microscope.  
Please read this user manual carefully and keep it for future reference.

Pay attention to protect the lens part. Close the lens lid after using to avoid entering dust or strange objects.

The microscope can be used in hand or inserted as a desktop, with attention to avoid damage to the components.

When placing items, place them directly below the center of the lens as much as possible. Avoid not seeing objects clearly and bringing about a bad experience.

### Packing List

- Microscope
- Plastic/Metal Bracket (One of the brackets is included)
- Type-C Data Cable

- User Manual
- Calibration Card

## **Bracket Installation**

Plastic Bracket

### **Step 1:**

[Step 1 details]

### **Step 2:**

[Step 2 details]

## **Metal Bracket**

### **Step 3:**

[Step 3 details]

### **Step 1:**

[Step 1 details]

### **Step 2:**

[Step 2 details]

### **Step 3:**

[Step 3 details]

## **Parts Description**

- Monomer Microscope: Core components for observation
- Focus Wheel: Multiple regulation for microscopy optical focus modulation
- Power Button: Turn on/off the microscope
- Reset Hole: Resume factory settings
- Photo Button: Take a photo and save the captured screen
- Lens Cap: Dust-proof, protects the lens
- Fill Light Bright Button: Brightens the lens barrel fill light
- Fill Light Dim Button: Adjusts the brightness of the lens barrel fill light
- Type-C Interface: Connects to a computer for use/charging
- Indicator Light: Indicates the status of the microscope

## **Detailed Operation**

1. How to zoom in and focus?

Counter-Clockwise Rotation: Increases magnification

Clockwise Rotation: Decreases magnification

**(Note:** At the same distance, the rotating zoom cylinder has two magnifications. To adjust more magnifications, it can be adjusted up and down through the microscope base bracket.)

2. Work with cell phone

3. **Download the App:**

Scan the QR code, click download and install. If using an iOS system, search for “Uni Lab” on the App Store for download.

## **FAQ**

**Q: How do I protect the lens?**

**A:** Close the lens lid after using to avoid dust or foreign objects entering.

**Q: Can I use the microscope in hand or as a desktop?**

**A:** Yes, the microscope can be used in both ways. Ensure to avoid damage to the components.

**Q: How should I place items for observation?**

**A:** Place items directly below the center of the lens as much as possible to ensure clear visibility.

**Q: How do I charge the microscope?**

**A:** You can use a daily mobile phone charger, computer, or charger to charge the microscope. The charging time should not exceed 12 hours to avoid affecting the battery life. If the microscope shell and battery become slightly heated during the charging process, it is a normal phenomenon.

## **User Manual**

Please read this user manual carefully and keep it for future reference.

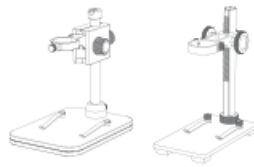
## **Read Me First**

- Thank you for purchasing the WTM-W1-A WiFi digital micro-scope.
- Please read this user manual carefully and keep it for future reference.
- Pay attention to protect the lens part. Close the lens lid after using to avoid entering dust or strange objects.
- The microscope can be used in hand or inserted as a desktop, with attention to avoid damage to the components.
- When placing items, place them directly below the center of the lens as much as possible. Avoid not seeing objects clearly and bringing about a bad experience.

## **Packing List**



Microscope



Plastic / Metal Bracket



Type-C Data Cable



User Manual



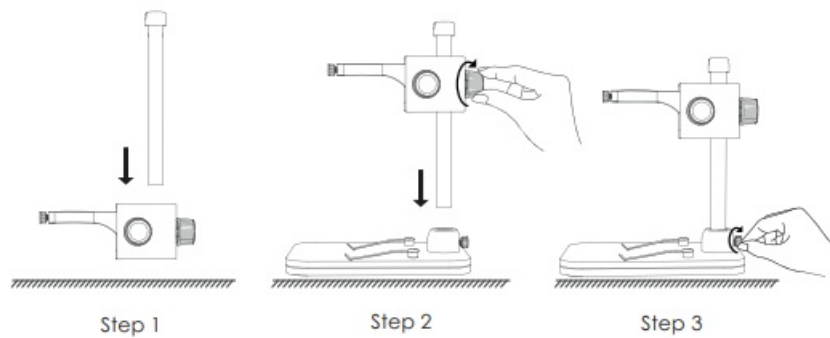
Calibration Card

( **Notice** The package contains only one of the brackets. Please refer to the purchase order )

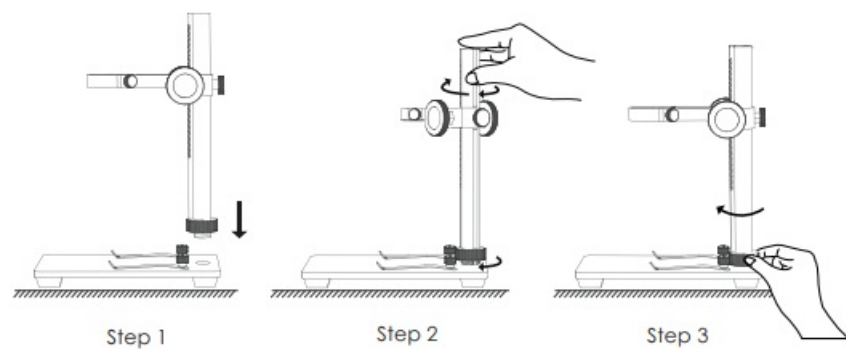
## Bracket Installation

( Notice: Accessories contain only one type of bracket. Please refer to the bracket installation procedure corresponding to the purchase order )

### Plastic Bracket



### Metal Bracket



## Parts Description

- Before using the microscope, make sure your hands are secured, or use it on the desktop.

### Monomer Microscope

The core components were observed by microscope

### Focus Wheel

Multiple Regulation  
microscopy optical  
focus modulation

### Lens Cap

Dust-proof,  
protect lens

### Power Button

Turn on /off Button

### Reset Hole

Resume Factory  
Setting

### Photo Button

Take a Photo and  
Save the  
Captured Screen

### Fill Light

### Bright Button

Lens Barrel  
Fill Light brighten

### Fill Light Dim Button

Lens Barrel Fill  
Light Dimming

### Type-C Interface

Connect the  
computer  
for use/charging

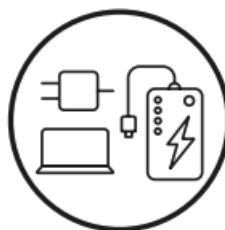
### Indicator Light②

After connecting the  
computer through the  
data cable, the indicator  
light② is steady on

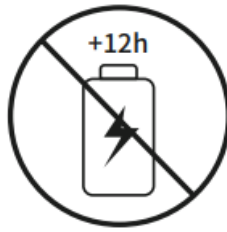
### Indicator Light①

After the microscope is turned on, the  
indicator light① flashes; after the mobile  
phone is successfully connected, the  
indicator light① is steady on

You can use a daily mobile phone charger, computer, and charger to charge the microscope.



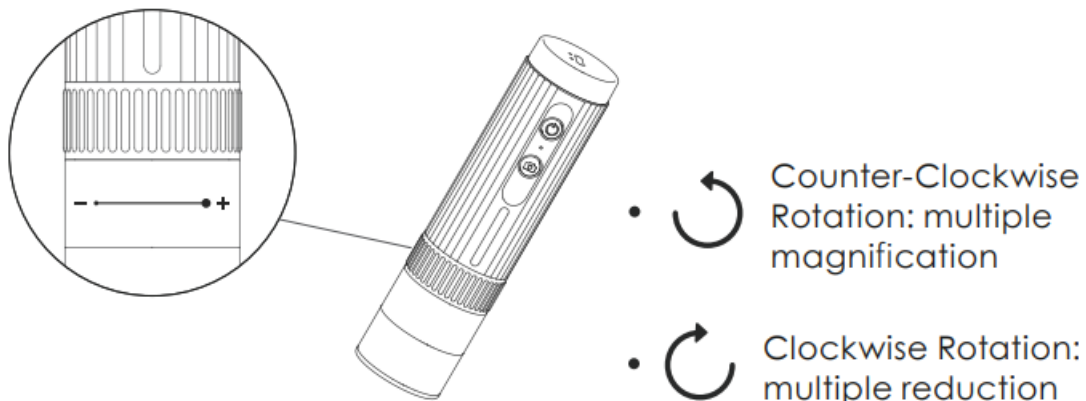
The charging time should not exceed 12 hours to avoid affecting the battery life.



- During the charging process, if the microscope shell and the battery are slightly heated, please rest assured to use the normal phenomenon.

## Detailed Operation

### How to zoom in and focus?



**(Note:** At the same distance, the rotating zoom cylinder has two magnification. To adjust more multiples, it can be adjusted up and down through the microscope base bracket.)

### Work with cell phone

#### Download the App

- Scan the QR code, click download and install.
- The mobile terminal is the iOS system, and you can search for “Uni Lab” at APP Store for download



Software to download the QR code



The IOS / Android APP Icon

### Operating steps

#### Step 1 Turn on the microscope

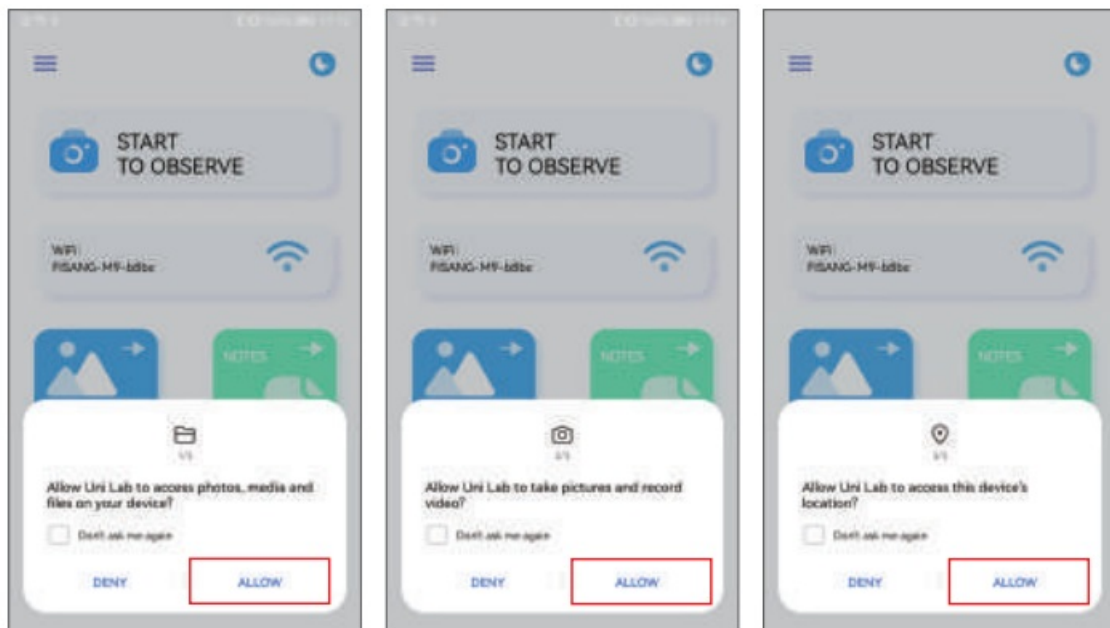
Long press the power button for 3s, and the blue light flashes under the button after turning on, indicating that the app has not been connected yet.

#### Step 2 Connect the microscope to Android / iOS

1. Open the Uni Lab APP, click WiFi, jump to the WiFi connection page of the Android / IOS device, select the corresponding network name of the product "WTM-W1-XXXXXX" (network without encryption)
2. Connect to the network. If the connection confirmation prompt appears, please click "Keep Connected"(Android version) / click "OK"
3. After the connection is successful, the microscope blue lights on. When you return to the app, you can see the image on your phone.

**(Note:** Please open the phone/tablet location permission when the APP is connected to the microscope.)

Run the APP, and follow the indicated operation steps.(Follow the red box instructions to make the selection)



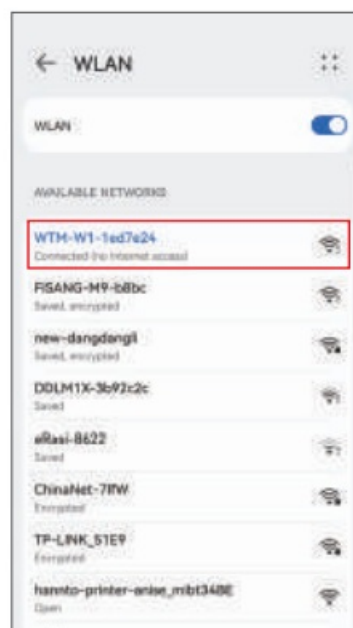
①

②

③



④



⑤



## Introduction of the APP

### APP Homepage

Because of the mobile phone model version is different, the pictures are for reference only




- Photo: Select a photo mode
- Video: Select the recording mode
- Zoom in: Click to zoom in on the screen (use when the screen is too small)
- Zoom Out: Click to zoom out the screen (used when the screen is too large, the default is the smallest each time it is opened)

### Work with Windows

#### Software download

The device camera button cannot be used, it can only be realized through software Photo recording function

1. For Windows 8, Windows 10 or higher system, search “UniLab”(as shown in “”) in the Microsoft Store to download it.
2. For Windows 7 and Windows XP, download the software from the website <http://www.weetool.net>

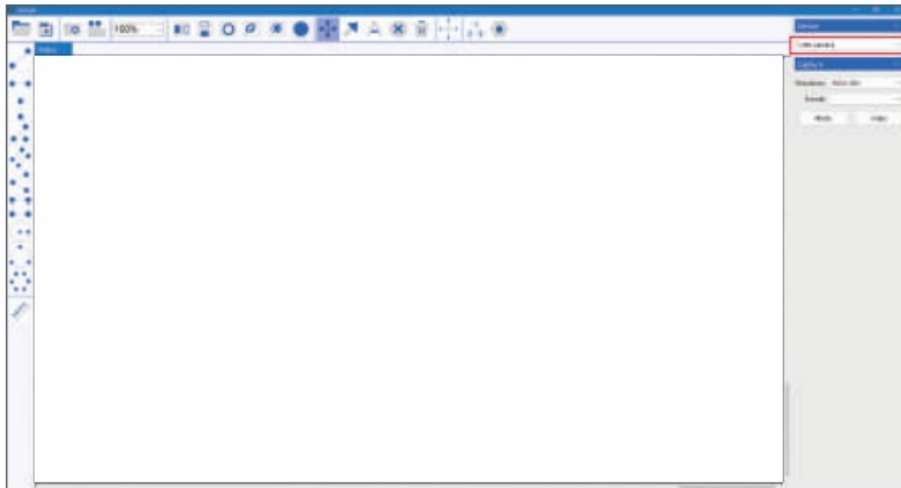


### Operating steps

**Step 1** With the microscope turned off, connect the micro-scope to the computer using a data cable.

**Step 2** Turn on the microscope, run the software, select the corresponding device name, you can see the image


on the computer, and take photos and videos through the software.



### Work with Mac/iMac

The device camera button cannot be used, it can only be realized through software Photo recording function

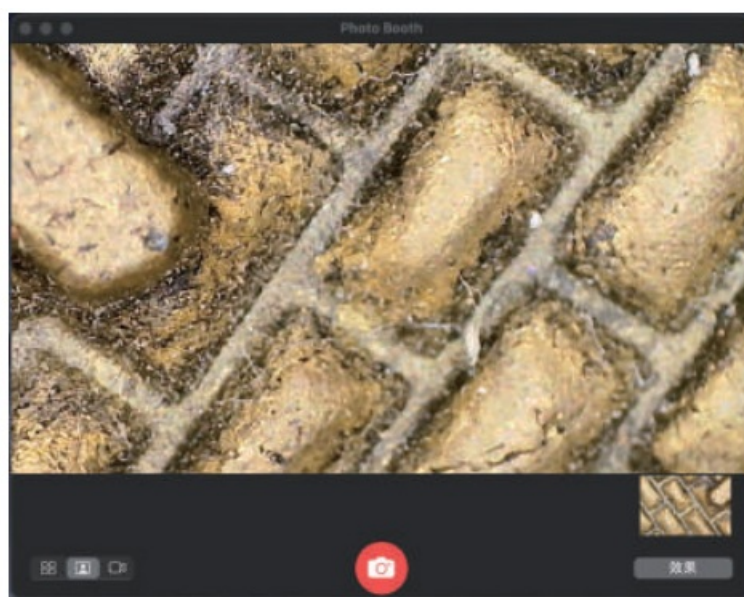
### Software download

- For Mac OS x 10.5 or higher system, use the default software “Photo Booth”(as shown in “”)

### Operating steps

**Step 1** With the microscope turned off, connect the micro-scope to the computer using a data cable.

**Step 2** Turn on the microscope, run Photo Booth, you can see the image on the computer, and take photos and videos through Photo Booth



### Product Parameters

Project	Parameter
Picture Format	JPG
Picture Size	1920*1080
LED Quantity	8 SMD 3528 bright white lights (brightness adjustable)
Focus Mode and Focus Range	Manual adjustment, 0 to 40 mm
Imaging Distance	3mm to Infinity
Sensor Size	1/4"
Sensitivity	4300mV/lux-sec
Video Recording Format	AVI
Video Resolution	1920*1080
Working Range	0-10m Open scene, Sheltered scene will affect working range
Working Hours	1.5h
Power Supply Mode	700mAh
Charging Requirements	DC-5V~1A
Charging Time	1.5h
Working Current	~260mA
The WiFi Working Environment	Android 4.0 and above systems, ios 8.0 and above systems
PC Operating System	Windows xp, win 7, win 8, win10 , Mac OSx10.5 or higher

## Troubleshoot the Microscope

Problem Phenomenon	Cause	Processing Method
The device heats up during charging	During the charging process, the current is large and the battery heat is high, which is a normal phenomenon	The normal state
The APP is disconnected	① The distance is too far ② The device is powered off ③ Equipment failure	① Close distance repeat connection ② Charge the device and use it ③ Close the APP and restart the device before use
The device cannot be charged	① The charging port is not securely inserted ② No power is connected ③ Equipment failure	① Remove and reinsert the interface ② Switch on the power
The lens shows blurred images	The ambient temperature changes rapidly, causing the lens to fog	Wait for the temperature balance, a period of time after the fog disappeared to use
The product can not be shut down or the key failure	System halted	Please plug in the power supply to reset and restart

**(Note:** It is normal for the APP to exit after being plugged in.)

## Documents / Resources

<p>Electron Microscope Model: WTM-W1-A</p> <p>User Manual Please read the user manual carefully and keep it for future reference.</p>	<p><a href="#">KMDES WTM-W1-A Wireless Digital Microscope</a> [pdf] User Manual</p> <p>WTM-W1-A Wireless Digital Microscope, WTM-W1-A, Wireless Digital Microscope, Digital Microscope, Microscope</p>
---	--

## References

-  [User Manual](#)

