



## Kmart Crash Racing Set Instructions

[Home](#) » [Kmart](#) » Kmart Crash Racing Set Instructions 



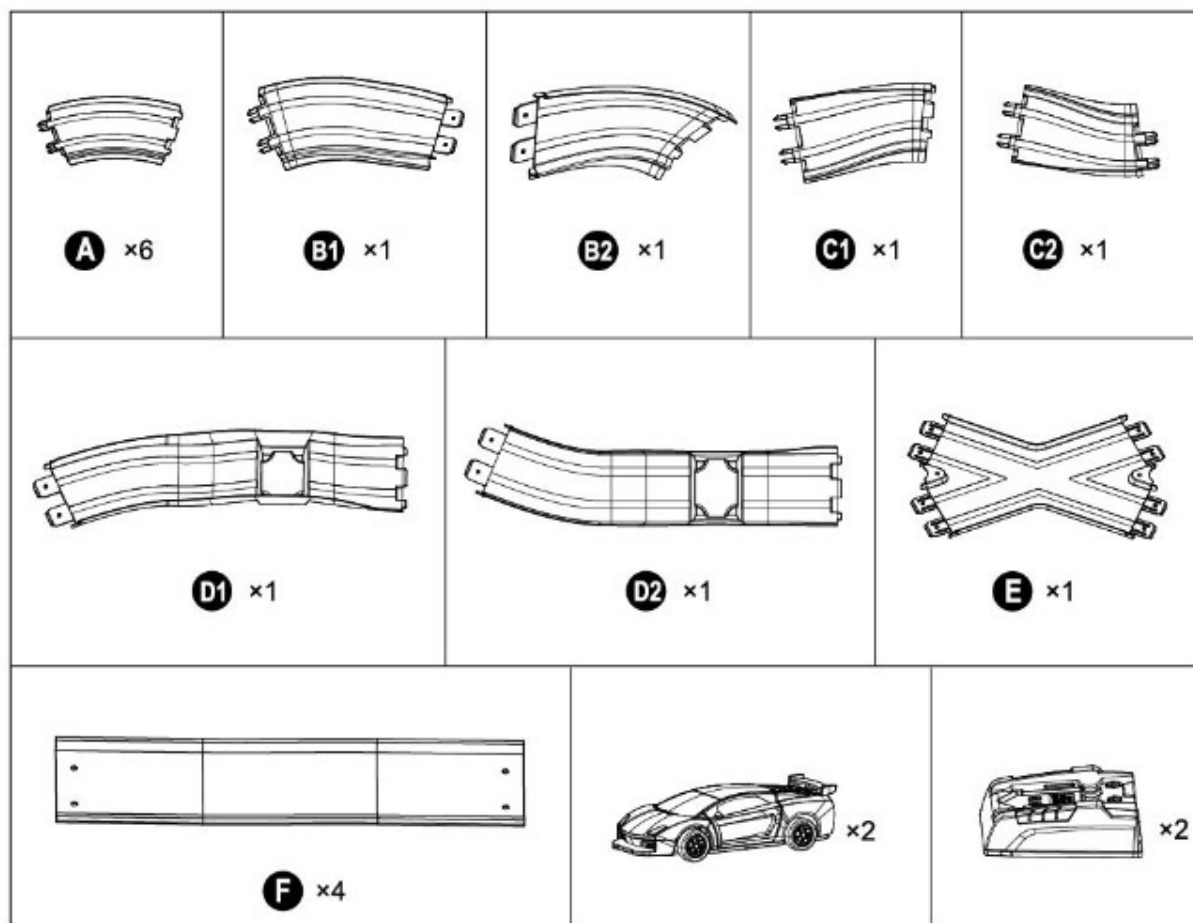
# ***CRASH RACING SET***

## INSTRUCTIONS

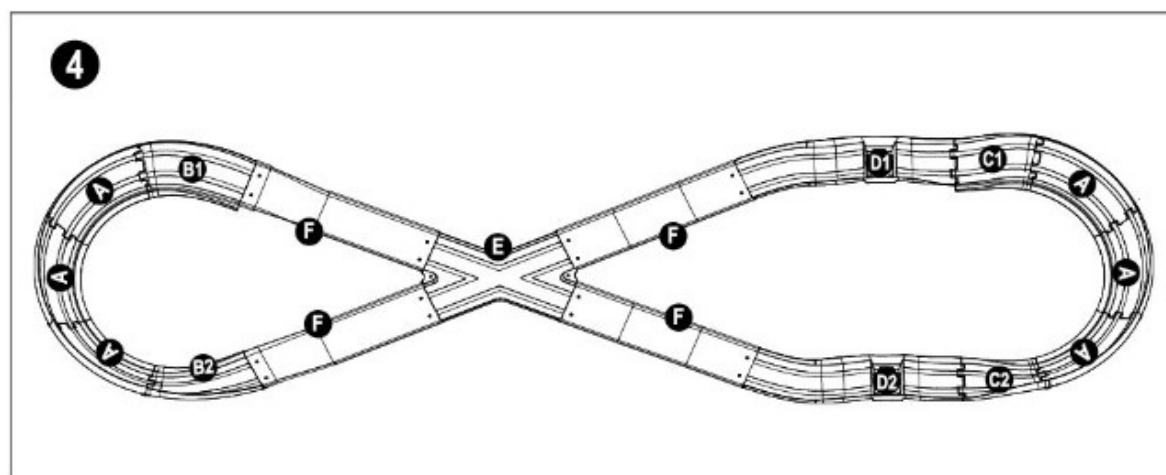
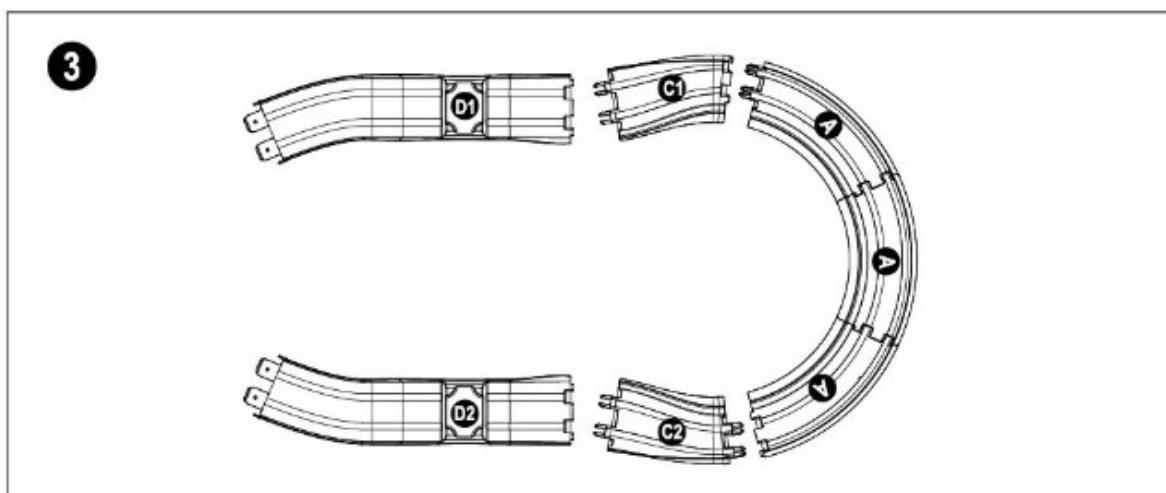
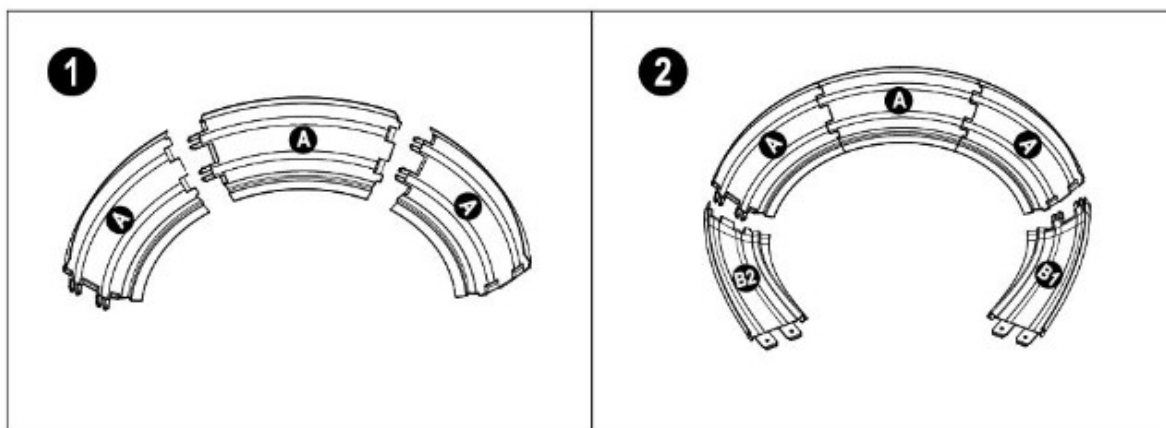
### Contents

- [1 Parts](#)
- [2 Assembly](#)
- [3 How To Charge](#)
- [4 Reassemble](#)
- [Instructions](#)
- [5 Documents / Resources](#)
- [6 Related Posts](#)

### Parts



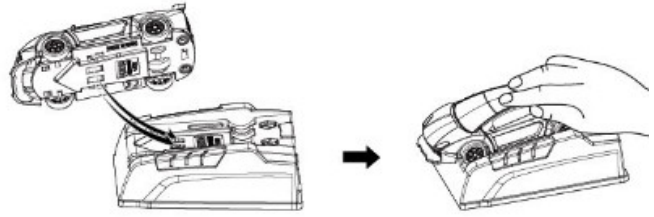
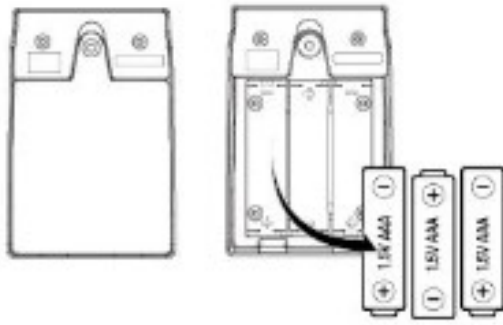
## Assembly



**How To Charge**

Each charging base requires 3 x 1.5V AAA batteries, total requires 6 x 1.5V AAA batteries (not included).

Place the car on the charger as diagram shown and hold it with your hand for around 10 seconds before each race.



## Reassemble Instructions



**WARNING:** FOR SAFETY REASONS, REMOVE ALL TAGS, LABELS AND PLASTIC FASTENERS BEFORE GIVING THIS TOY TO YOUR CHILD.

**WARNING:** BATTERIES ARE TO BE INSERTED WITH THE CORRECT POLARITY (+ AND -)..DO NOT MIX DIFFERENT TYPES OF BATTERIES OR NEW AND USED BATTERIES. NON-RECHARGEABLE BATTERIES ARE NOT TO BE RECHARGED. RECHARGEABLE BATTERIES ARE ONLY TO BE CHARGED UNDER ADULT SUPERVISION. RECHARGEABLE BATTERIES ARE TO BE REMOVED FROM THE TOY BEFORE BEING CHARGED. THE SUPPLY TERMINALS ARE NOT TO BE SHORT-CIRCUITED. REMOVE BATTERIES FROM THE TOY WHEN NOT IN USE FOR EXTENDED TIME OR WHEN BATTERIES BECOME EXHAUSTED. BATTERY INSTALLATION BY AN ADULT IS REQUIRED. DISPOSE OF BATTERIES RESPONSIBLY. DO NOT DISPOSE OF IN FIRE.

**MADE IN CHINA**

**KEYCODE: 43022069**

ADULT ASSEMBLY AND ASSISTANCE REQUIRED.

PRODUCT MAY VARY FROM IMAGE SHOWN.

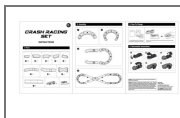
READ THE INSTRUCTIONS BEFORE OPERATING THE PRODUCT.

PLEASE KEEP THE PACKAGING FOR FUTURE REFERENCE.



**WARNING:** CHOKING HAZARD SMALL PARTS. NOT FOR CHILDREN UNDER 3 YEARS.

## Documents / Resources



[Kmart Crash Racing Set](#) [pdf] Instructions  
Kmart, Crash Racing Set

Manuals+