



Kmart A-1986-3 Zen Aroma Diffuser and Oils Set Instruction Manual

[Home](#) » [Kmart](#) » Kmart A-1986-3 Zen Aroma Diffuser and Oils Set Instruction Manual

Contents [[hide](#)]

- 1 Kmart A-1986-3 Zen Aroma Diffuser and Oils Set
- 2 SAFETY INSTRUCTIONS
- 3 OVERVIEW
- 4 GETTING STARTED SET UP THE DIFFUSER
- 5 REMOTE CONTROL
- 6 OPERATIONS
- 7 DIFFUSER BASE
- 8 AUTO-OFF FUNCTION
- 9 MOVING AND STORAGE INSTRUCTIONS
- 10 CARE AND MAINTENANCE
- 11 12 Month Warranty
- 12 BUTTON CELL BATTERY WARNING
- 13 Troubleshooting
- 14 Documents / Resources
 - 14.1 References
- 15 Related Posts



Kmart A-1986-3 Zen Aroma Diffuser and Oils Set

**IMPORTANT!**

Care should be taken with the use of diffusers around animals. Both the choice of essential oils and where animals are should be taken into consideration when in use.

WARNING:

BUTTON CELL BATTERIES ARE HAZARDOUS (NEW OR USED). KEEP AWAY FROM CHILDREN. BUTTON CELL BATTERIES CAN CAUSE SEVERE OR FATAL INJURIES IN 2 HOURS OR LESS IF THEY ARE SWALLOWED OR PLACED INSIDE ANY PART OF THE BODY. IF YOU SUSPECT YOUR CHILD HAS SWALLOWED OR INSERTED A BUTTON CELL BATTERY, CALL THE 24-HOUR POISONS INFORMATION CENTRE IN AUSTRALIA ON 131126 OR IN NEW ZEALAND 0800 764 766 OR CONTACT YOUR COUNTRY'S EMERGENCY DEPT. USED BATTERIES MUST BE DISPOSED OF IN THE GARBAGE OR A BATTERY RECYCLING FACILITY.

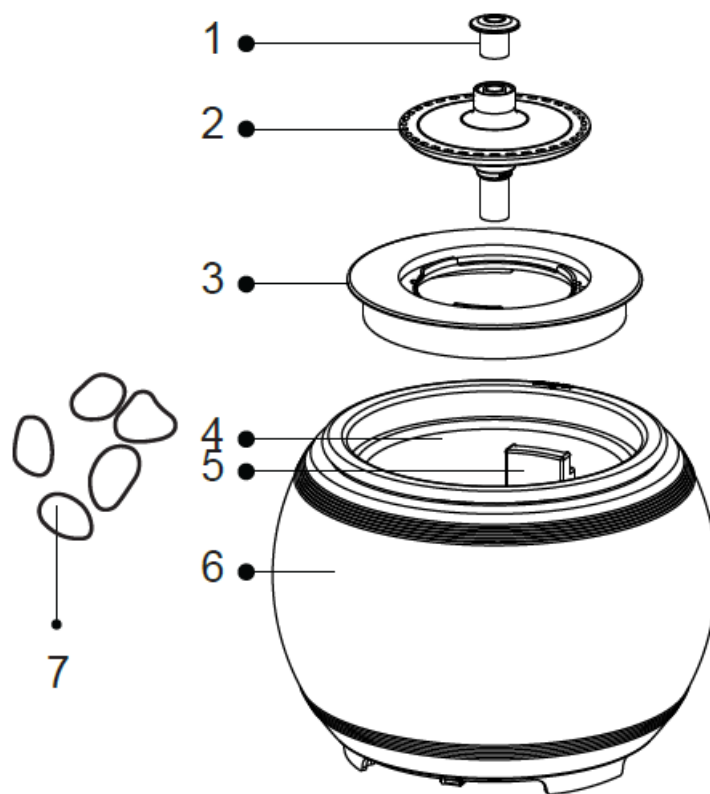
SAFETY INSTRUCTIONS

WARNING- TO REDUCE THE RISK OF BURNS, FIRE, ELECTRIC SHOCK, OR INJURY TO PERSONS:

1. DO NOT block the air inlet at the bottom of the diffuser.
2. DO NOT use the diffuser on flammable surfaces or near flammable materials, heat sources or open flames.
3. DO NOT use if the adaptor or diffuser is damaged. If the diffuser malfunctions, is damaged or is immersed in water, stop using the diffuser.
4. Only use with the adaptor provided.
5. Indoor dry location use only.
6. DO NOT touch the ultrasonic disc with a finger or scrape it with metal tools to avoid damage to the disc. This appliance is not intended for use by persons (including children) with reduced physical, sensory or mental capabilities, or lack of experience and knowledge, unless they have been given supervision or instruction concerning use of the appliance by a person responsible for their safety.
7. Children should be supervised to ensure that they do not play with the appliance.
8. DO NOT immerse the diffuser in water or any other liquid.
9. Always use fragrance with water. Do not use fragrance on its own.
10. DO NOT leave the diffuser on or unattended overnight.
11. Only use with essential oil or water-based fragrances.

12. Acidic oil can damage the diffuser. Check the instructions of the oil or fragrance.
13. The appliance is only to be used with the recommended vaporizing medium. The use of other substances may give rise to a toxic or create a fire risk.
14. CHOKING HAZARD. Keep decorative stones in a safe place and keep away for children.
15. Use provided power supply only.
16. For filling, please refer to the “GETTING STARTED – SET UP THE DIFFUSER” section.
17. For cleaning and descaling, please refer to the “CARE AND MAINTENANCE” section.
18. Unplug the appliance during filing and cleaning.

OVERVIEW



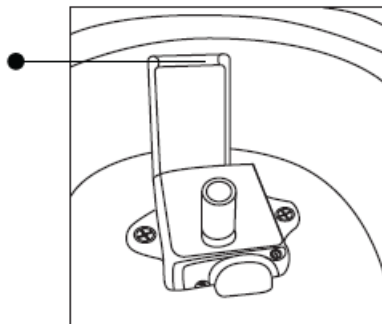
1. Mist outlet
2. Diffuser core reservoir lid
3. Diffuser outer reservoir lid
4. Reservoir
5. Maximum water level
6. Ceramic cover
7. Decorative stones

GETTING STARTED SET UP THE DIFFUSER

1. Place the diffuser on a flat and stable platform.
2. Remove the core and outer reservoir lid.
3. Insert the DC jack of the adaptor into the DC socket at the bottom of base.
4. Fill the reservoir with water.

DO NOT fill the water over the maximum water level – 250ml. Always use room temperature water.

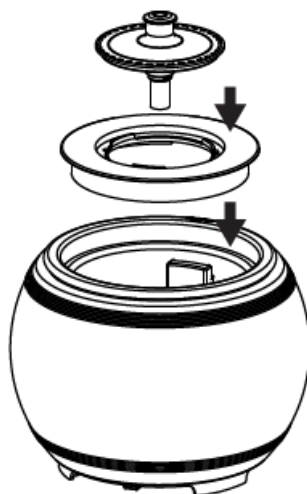
Maximum
water level



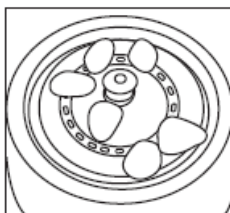
CAUTION

- DO NOT overfill the reservoir
- DO NOT use water over 45°C

5. Add 2 to 3 drops of essential oil to a full tank of water. For a stronger fragrance, add more drops of essential oil, but do not exceed 4 drops.



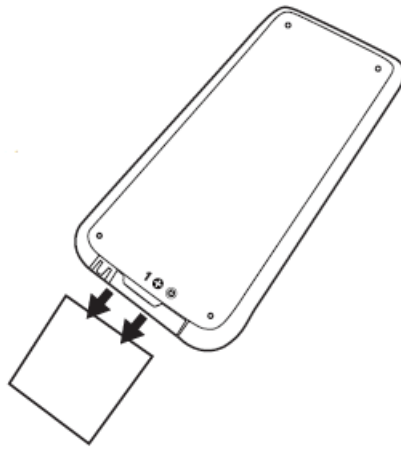
6. DO NOT add more than 2 drops of essential oil to 20ml of water. Adding too much oil will damage the diffuser. Essential oils should never be used directly on the skin.
7. Place the core and outer reservoir lid back on the top of the diffuser securely.
8. Put the decorative stones on the lid surface.



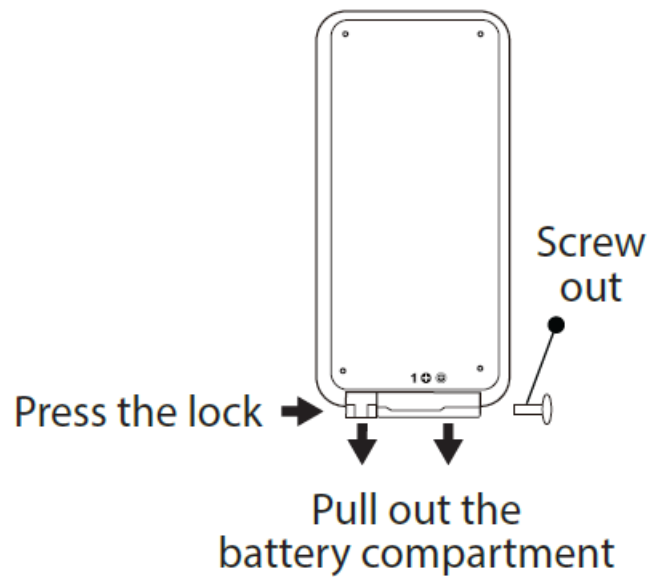
9. Plug the AC adaptor into a wall outlet.

REMOTE CONTROL

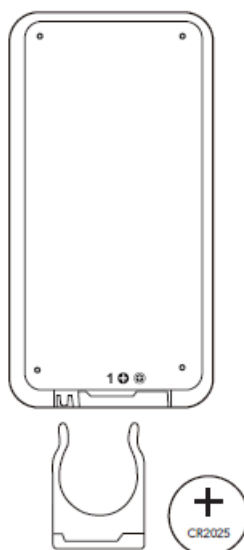
1. When the remote control is first operated, please remove battery insulator, the power will be in stand-by mode.



2. If the remote control is not working, the battery could be flat. Please replace with a new CR2025 battery.
3. Use a screw driver (not included) to loosen the battery compartment.
4. Press the lock & pull out the battery compartment.



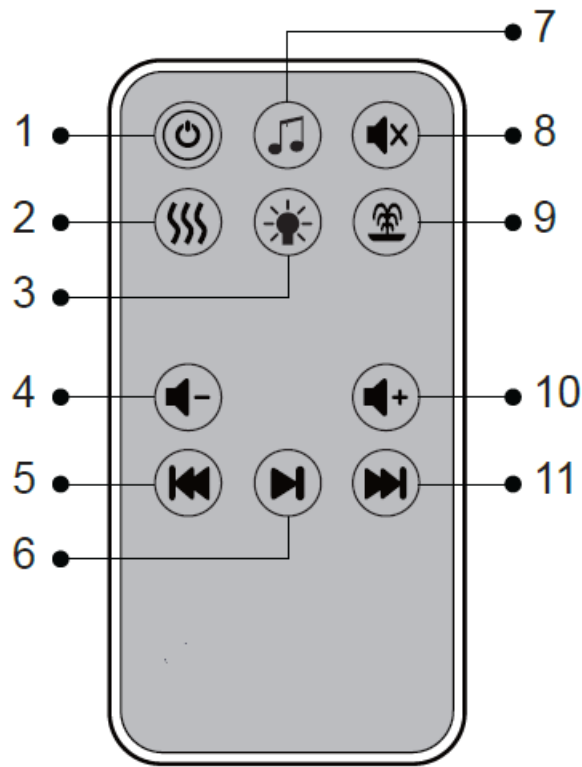
5. Insert the new battery. Use plus (+) and minus (-) directions in battery compartment as a guide for the battery position.



6. Put the battery compartment back into the remote control. Lock it and screw back in.

OPERATIONS

All functions of the diffuser can be controlled by the remote control or by the manual control buttons.

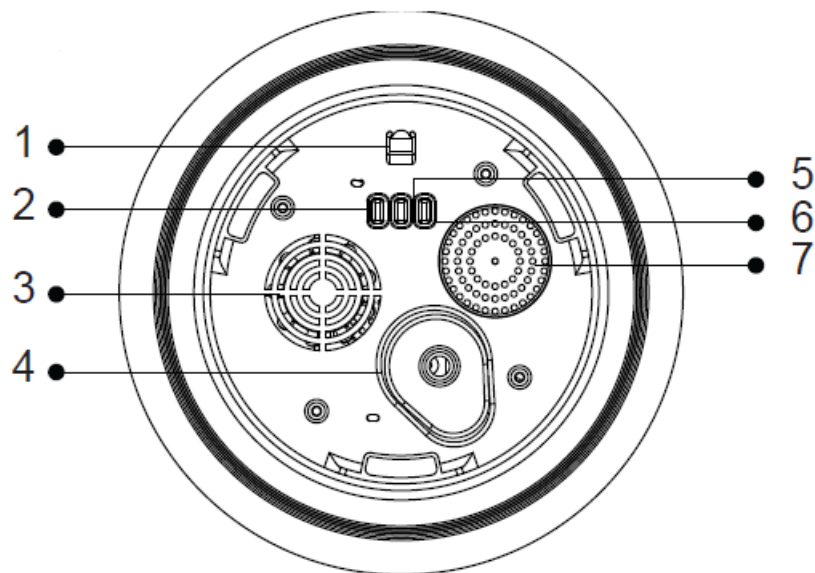


1. Power button
2. Aroma diffuser button
3. Light button
4. Volume down
5. Previous sound
6. Play/Pause
7. Sound button
8. Mute button
9. Fountain button
10. Volume up
11. Next sound

- **Power button:** Press once to start the diffuser, fountain and light functions together. The light will automatically change colours. Press again to power off.
- **Sound button:** Activates the sound
- **Mute button:** Mutes the sound.
- **Aroma diffuser button:** Press to turn the aroma diffuser ON and OFF.
- **Light button:** Press to choose and set the light.
- **The colour sequence of the light button control is:** Automatic colour changing – Cream – Red – Yellow – Purple – Green – Sky blue – Deep Blue.
- **Fountain button:** Press to turn the fountain ON and OFF. Previous sound: Skip backwards to replay previous sound.
- **Play/Pause:** Press to listen to or pause the sound. There are 5 sound selections to choose from.
- **Next sound:** Skip forwards to hear the next sound.

If you misplace your remote, you can control the diffuser manually by following the next steps.

DIFFUSER BASE



1. Remote controller receiver
2. Manual light control (Hold the power button to turn VOLUME DOWN during the sound mode)
3. Air inlet
4. DC socket for adaptor
5. Manual ON/OFF power for the aroma diffuser, light, fountain and sound control.
6. Manual fountain control (Hold the power button to turn VOLUME UP during sound mode)
7. Sound speaker

AUTO-OFF FUNCTION

1. If the water level drops below 100mL, the fountain function will automatically turn off. All other functions will continue to operate. If you want to reuse the fountain setting, refill the reservoir above 100mL and turn the fountain back on with the remote.
2. All functions of the diffuser will turn off if the water level is below 20mL or empty.

MOVING AND STORAGE INSTRUCTIONS

1. DO NOT move the diffuser while in use. Spillage may cause damage to the diffuser and other parts.
2. Always hold both the base and the cover when moving the diffuser.
3. Empty the reservoir and clean the diffuser before storing.

CARE AND MAINTENANCE

1. Always turn OFF and unplug the diffuser for care and maintenance.
2. Clean the reservoir before using a different essential oil.
3. Empty the reservoir using the vent.
4. Clean the reservoir with a soft cloth.
5. Clean scale deposits on the ultrasonic disc with clean water.
6. DO NOT use metal or hard abrasive to scrape the ultrasonic disc.

7. Clean the ultrasonic disc regularly to avoid scale building up.
8. If the ultrasonic disc becomes excessively scaled, clean it repeatedly to descale.
9. Dry the diffuser completely before using it again.
10. DO NOT use vinegar or other corrosive cleaning agents.
11. Wipe off the fan inlet regularly at the bottom with a dry, soft cloth.

12 Month Warranty

Thank you for your purchase from Kmart.

Kmart Australia Ltd warrants your new product to be free from defects in materials and workmanship for the period stated above, from the date of purchase, provided that the product is used in accordance with accompanying recommendations or instructions where provided. This warranty is in addition to your rights under the Australian Consumer Law.

Kmart will provide you with your choice of a refund, repair or exchange (where possible) for this product if it becomes defective within the warranty period. Kmart will bear the reasonable expense of claiming the warranty. This warranty will no longer apply where the defect is a result of alteration, accident, misuse, abuse or neglect.

Please retain your receipt as proof of purchase and contact our Customer Service Centre on 1800 124 125 (Australia) or 0800 945 995 (New Zealand) or alternatively, via Customer Help at Kmart.com.au for any difficulties with your product. Warranty claims and claims for expense incurred in returning this product can be addressed to our Customer Service Centre at 690 Springvale Rd, Mulgrave Vic 3170.

Our goods come with guarantees that cannot be excluded under the Australian Consumer Law. You are entitled to a replacement or refund for a major failure and compensation for any other reasonably foreseeable loss or damage. You are also entitled to have the goods repaired or replaced if the goods fail to be of acceptable quality and the failure does not amount to a major failure. For New Zealand customers, this warranty is in addition to statutory rights observed under New Zealand legislation.


BUTTON CELL BATTERY WARNING

- DISPOSE OF USED BATTERIES IMMEDIATELY AND SAFELY. FLAT BATTERIES CAN STILL BE DANGEROUS.
- EXAMINE DEVICES AND MAKE SURE THE BATTERY COMPARTMENT IS CORRECTLY SECURED, E.G. THAT THE SCREW OR OTHER MECHANICAL FASTENERS ARE TIGHTENED. DO NOT USE IF COMPARTMENT IS NOT SECURE.

Troubleshooting

Problem	Possible Reasons	Solution
Unit does not work	Power cable not connected	Re-connect power with cord cable and press the button
	Power device failure	Change power device
Unable to Spray mist	Water reservoir might be dirty	Clean the water reservoir
	Too much water inside the reservoir	Make sure water inside the reservoir is not over max water level
	Cover is not closed properly	Make sure the cover is tightened
	Is the bottom air inlet dirty?	Clear away the dust in the bottom air inlet
	Water level very low	Fill with more water
Remote unable to control the diffuser	If there are any objects between the remote and diffuser sensor, infrared signals might be blocked	Make sure no objects are between the remote and diffuser
	The remote signal might be out of range	Move closer to the diffuser until the remote functions again
	Remote out of power	Replace the battery
Caution: DO NOT shake or tilt the product when there is water in the reservoir or else the product will not work properly		

Documents / Resources

	Kmart A-1986-3 Zen Aroma Diffuser and Oils Set [pdf] Instruction Manual A-1986-3, Zen Aroma Diffuser and Oils Set, A-1986-3 Zen Aroma Diffuser and Oils Set, Aroma Diffuser and Oils Set, Diffuser and Oils Set, Oils Set
---	--

References

- [Kmart.com.au](https://www.kmart.com.au)