

Kmart 43306329 Adjustable Inline Scooter



# Kmart 43306329 Adjustable Inline Scooter Instruction Manual

[Home](#) » [Kmart](#) » Kmart 43306329 Adjustable Inline Scooter Instruction Manual 

## Contents

- [1 Kmart 43306329 Adjustable Inline Scooter](#)
- [2 Product Usage Instructions](#)
- [3 General instructions](#)
- [4 Care Instructions](#)
- [5 Documents / Resources](#)
  - [5.1 References](#)
- [6 Related Posts](#)



**Kmart 43306329 Adjustable Inline Scooter**



### Product Specifications

- **Product:** Adjustable Inline Scooter
- **Keycode:** 43306329
- **Age Recommendation:** Not suitable for children younger than 3 years old
- **Maximum Weight Capacity:** 50 kg
- **Usage:** Not for use on public roads

### Product Usage Instructions

#### Assembly

1. Assemble the scooter by an adult.
2. Ensure all parts are properly set out and follow the assembly instructions.
3. Keep the packaging until assembly is complete.

### **General Instructions**

- The scooter must be assembled by a responsible adult.
- Use suitable protective equipment such as helmets, shoes, elbow, wrist, and knee protectors.
- Teach the child how to use the scooter safely and responsibly.

### **Directions**

- a) Do not use on public roads.
- b) Best used on flat, clean surfaces.
- c) Avoid bumps and drainage grates.
- d) Not suitable for night use.
- e) Always supervise children during use.
- f) Only one child should ride the scooter at a time.

### **Before and After Use**

- Keep hands on the outside of the handlebar and footrest when opening or closing the scooter to prevent pinched fingers.
- Check all locking mechanisms before and after use.

### **During Use**

- Folding and unfolding operations should be done by an adult.
- Be cautious of pinching fingers during these operations.

### **Assembly Instructions**

#### **1. How to Fold Up the Scooter**

2. Step 1: Loosen the quick release, and adjust tension if needed.
3. Step 2: Open the quick lock, adjust the steering bar, and close the lock.
4. Step 3: Press the scooter handgrip on the steering bar and adjust the steering bar angle.

### **FAQ**

- **Q: Can children under 3 years old use this scooter?**

- A: No, this scooter is not suitable for children under 3 years old.

- **WARNING!** Assembly by an adult.
- **WARNING!** Not suitable for children younger than 3 years old, danger of falling.
- **WARNING!** Protective equipment should be worn.
- **WARNING!** Not for children with a body mass of more than 50 kg.
- **WARNING!** Do not use on public roads.

Remove the scooter and all the parts from the box. Set out all the parts and read the assembly instructions prior to use. Keep the packaging until assembly is complete.

## **General instructions**

- This scooter must be assembled by a responsible adult. Prior to use, make sure that the scooter has been assembled properly. Remove all the parts which are not necessary for play before giving the scooter to your child. Due to the skill it requires, the scooter must be used with care in order to avoid falls or collisions likely to injure the user or others.
- To use with a suitable protective equipment, including a helmet, shoes, elbow, wrist and knee protectors. Teach the child how to use it safely and responsibly.
- The scooter is not a toy for children under the age of 3 years.

## **Directions**

- **a)** The scooter can be dangerous and can lead to traffic accident when used on public highways. Don't use on the public roads.
- **b)** It is best used on a flat, clean surface, free of gravel and grease.
- **c)** Avoid bumps and drainage grates that may cause an accident.
- **d)** The scooter does not include any headlights or lights. It is therefore not suited for use at night or during periods when visibility is limited.
- **e)** Always use under adult supervision.
- **f)** Do not allow more than one child to ride the scooter at the same time.

## **Before and after use**

To prevent pinched fingers, keep your hands on the outside of the handlebar and the footrest when opening and closing the scooter. Make sure that all locking mechanisms are securely locked:

- Check the height of the steering system, and make sure the nuts are tightened and that the handlebars and the front wheel are perpendicular.
- Check all of the connection elements: the brake, the quick-release system of the steering column, and the wheel axles must be adjusted correctly and not damaged.
- Also, check the tire wear.

## **During use**

- Standing on the scooter, one hand on each handle, push with one of your feet to move forward. Proceed with

caution at the start.

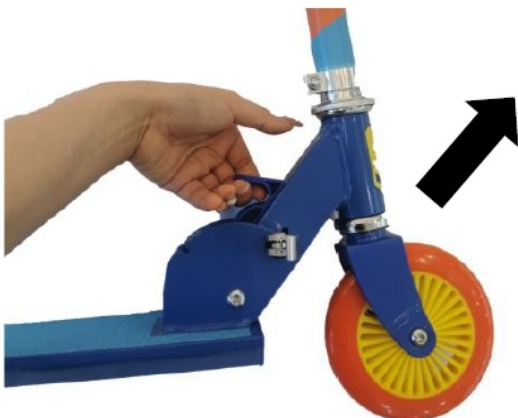
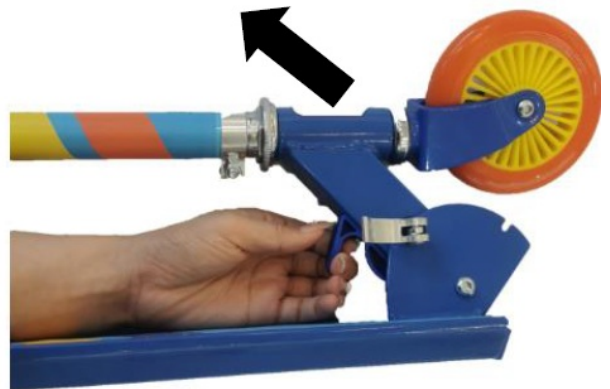
- **Braking:** a brake is located at the rear, when necessary, press down on it to slow down. Press down gradually in order to prevent skidding or loss of stability. The metal or aluminum brake may heat up after multiple uses. Avoid touching it during and after use.
- Shoes are mandatory and we strongly advise you to wear pants and long-sleeved shirts to avoid injury if you fall.
- Explain to the child clearly how to open/close and especially how to lock the scooter before any use.

## Assembly Instructions

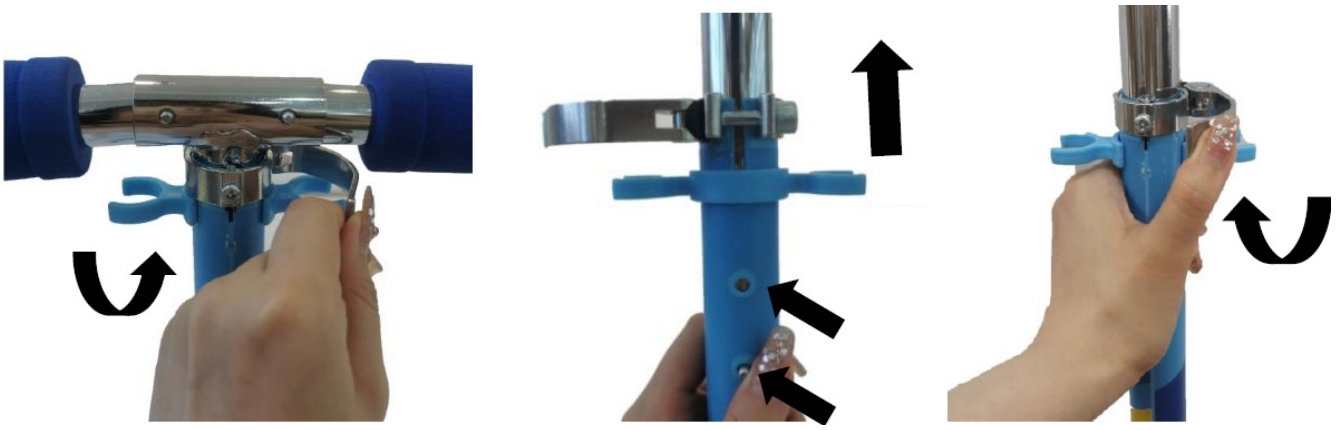
1. The scooter folding and unfolding operations are to be performed by an adult.
2. During these operations, be careful not to pinch your fingers in the hinge and locking system.
3. Make sure that all the locking mechanisms are securely locked.

## HOW TO FOLD UP THE SCOOTER

- **Step 1:** Loosen the quick release (Open position). Pull the plastic lever up until the quick-release pin comes out of its position, then tighten the quick-release (Close position). To adjust the tension of the quick release, tighten or loosen the release nut in open position.



- **Step 2:** Open the quick lock and pull the steering bar until the bullet lands in the notch, this scooter only has 2 notches can be adjusted as below image B arrows show. Then close the quick lock. Clamp or loosen the fast lock by tightening or loosening the locknut on the open mode.

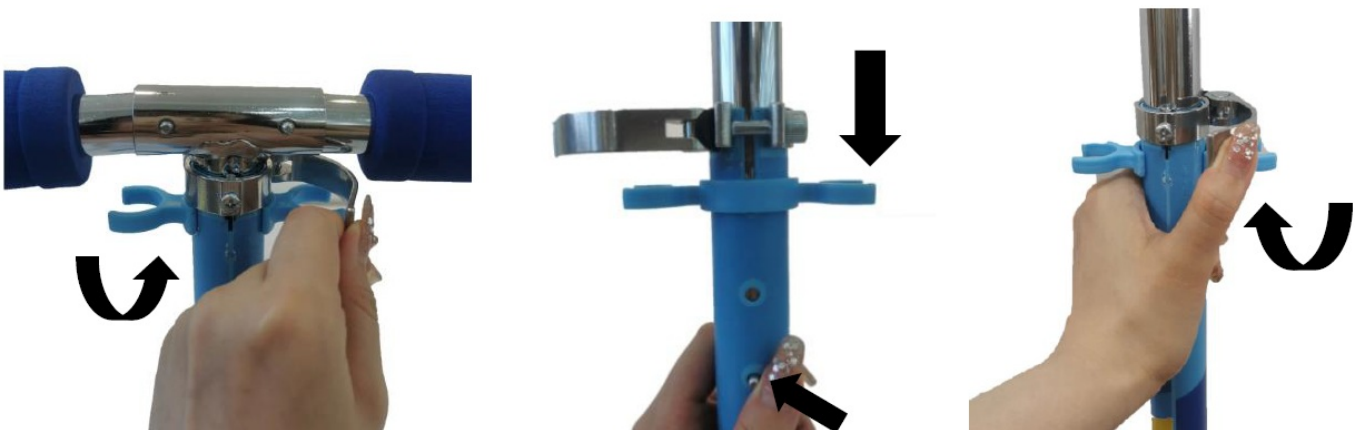


- **Step 3:** Press the scooter handgrip on the steering bar until the bullets are in position. Adjust the steering bar by turning off the smaller ring with a key and centre handles at right angles to the front wheel. Clamp the ring again.

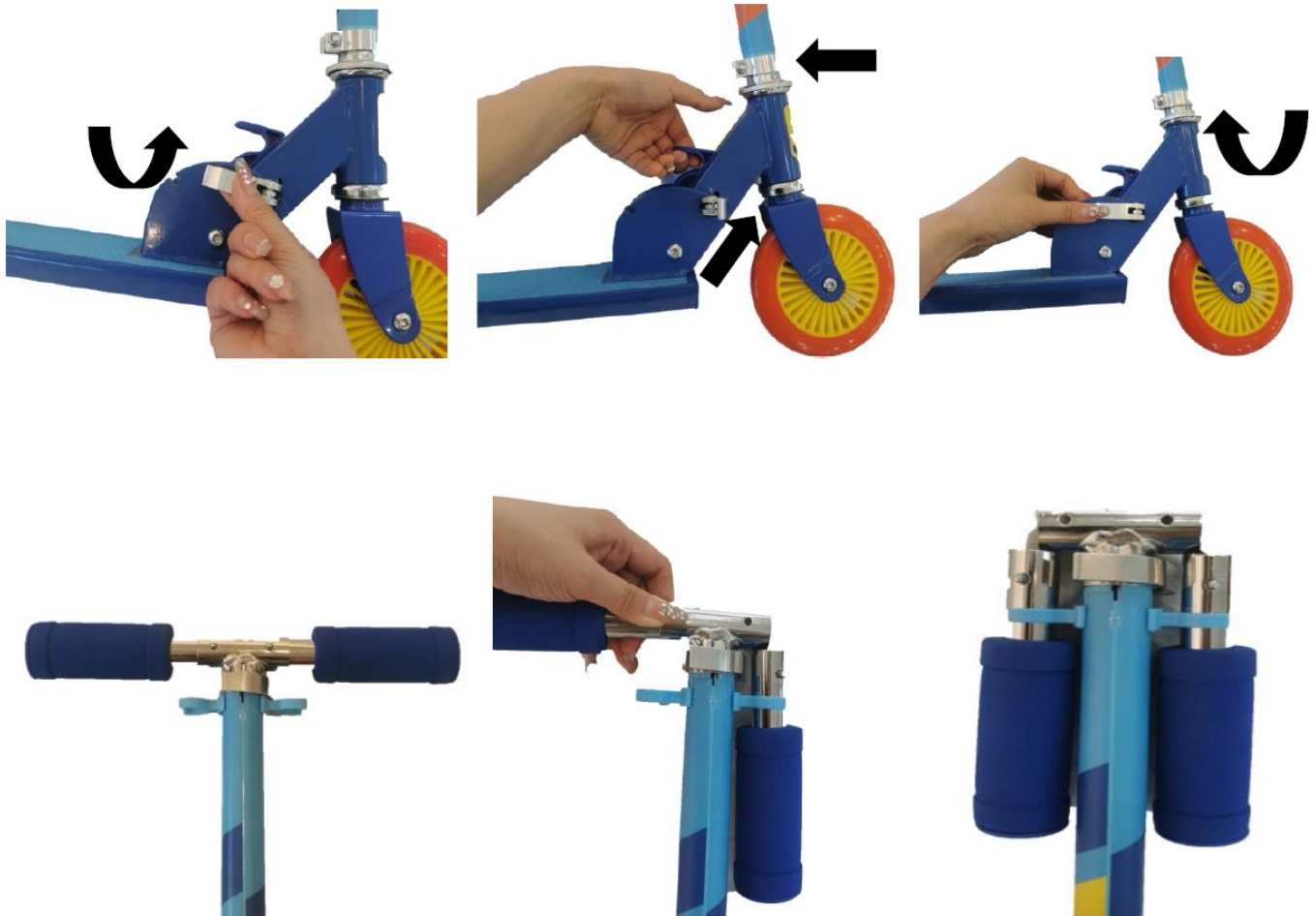


## HOW TO FOLD THE SCOOTER TOGETHER

- **Step 1:** Open a quick lock and press the steering rod inwards. Lower the upper part of the steering rod. Then close the quick lock.



- **Step 2:** Loosen the quick release (Open position). Pull the plastic lever up and lower the steering column backward until it clips into position, then tighten the quick release (Close position).



- **Step 3:** Release the scooter handle by pressing the bullet.

DO NOT FORGET TO REGULARLY TIGHTEN CONTROL BLOCKS SO THAT YOU WILL NOT LOSE THE LOCKING PIN OR SCREW.

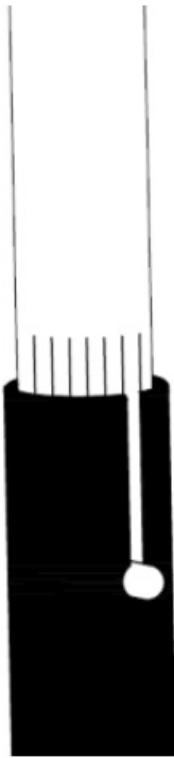
## Care Instructions

**A. Wheel bearings:** Avoid going through water, oil or sand as this can damage wheel bearings. To look after the wheel bearings, systematically check that the wheels turn properly by turning the scooter upside-down and using your hand to spin the wheels. If the wheels do not spin they must then be removed to check their condition. First unscrew the wheel axle, remove the axle, and detach the wheel, then carefully push the two wheel bearings out of their housing. If they are chipped or dented, new ones should be bought. If there is no visible damage, they must then be oiled. To do this, remove all traces of grease, mud or dust with a kitchen towel or cloth, and re-oil them with a grease spray or by leaving them to soak overnight in oil [turn them several times in the oil first]. Remove and reassemble the wheel bearings and axles, followed by the wheel, onto the scooter. proceed in the same manner for the other wheel.

**B. Wheels:** The wheels wear down with time and can be pierced if overly used on rough surfaces. The back wheel on which the brake is applied is particularly affected after several hours of braking. In the interests of safety, they should be checked regularly and changed if necessary.

**C. Modifications:** The original product must by no means be modified except for the maintenance-related changes mentioned in these instructions.


**D. Nuts and axles:** These should also be checked regularly. They can become loose after a while in which case they should be tightened. They can become worn and not tightened properly, in which case they should be replaced.



**WARNING!** When adjusting the steering bar, the marked part is the minimum position you should insert, do not exceed the part.

MADE IN CHINA  
FOR AU / NZ: IMPORTED FOR KMART  
STORES IN AUSTRALIA AND NEW ZEALAND.

## Documents / Resources

<p><b>ADJUSTABLE &amp; INLINE SCOOTER INSTRUCTIONS</b>  <b>Part No. 43306329</b></p> <p><b>WARNING</b> Read this manual before use.</p> <p><b>WARNING</b> The scooter is not intended for use on roads, sidewalks, or other paved areas.</p> <p><b>WARNING</b> The scooter is not intended for use on uneven or rough terrain.</p> <p><b>WARNING</b> Do not use on public roads.</p> <p><b>Model Information</b></p> <p>Model 43306329 is a 250cc, 4-stroke, single-cylinder, air-cooled, 4-speed scooter with a maximum speed of 45 mph (72 km/h). It is designed for use on paved surfaces only. The scooter is not intended for use on uneven or rough terrain, or for use on public roads.</p> <p><b>Features</b></p> <ul style="list-style-type: none"> <li>250cc, 4-stroke, single-cylinder, air-cooled, 4-speed engine</li> <li>4-speed transmission with 1st, 2nd, 3rd, and 4th gears</li> <li>Automatic clutch</li> <li>Front and rear disc brakes</li> <li>LED headlight and taillight</li> <li>12V battery</li> <li>150W motor</li> </ul> <p><b>Before use and use</b></p> <p>Read this manual carefully before using the scooter. The scooter is not intended for use on uneven or rough terrain, or for use on public roads. The scooter is designed for use on paved surfaces only. The scooter is not intended for use on uneven or rough terrain, or for use on public roads.</p>	<div>  </div>
---	---

## References

- **User Manual**

[Manuals+](#), [Privacy Policy](#)

This website is an independent publication and is neither affiliated with nor endorsed by any of the trademark owners. The "Bluetooth®" word mark and logos are registered trademarks owned by Bluetooth SIG, Inc. The "Wi-Fi®" word mark and logos are registered trademarks owned by the Wi-Fi Alliance. Any use of these marks on this website does not imply any affiliation with or endorsement.