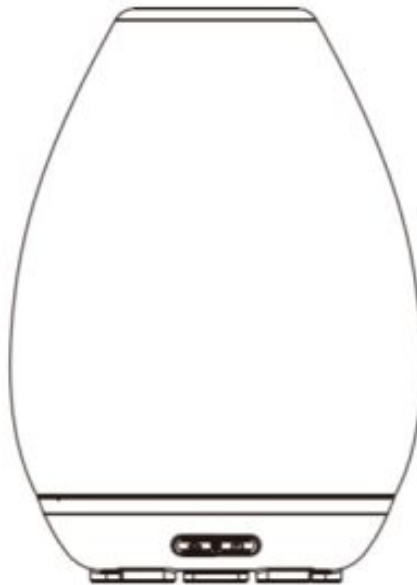




Kmart 43103768 Tortoise Shell Look Aroma Diffuser Instruction Manual

[Home](#) » [Kmart](#) » Kmart 43103768 Tortoise Shell Look Aroma Diffuser Instruction Manual



Create an aromatic, soothing atmosphere in your home Use ultrasonic vibration to transform water into mist. The essential oil can be added to create a fragrance.

IMPORTANT!

Care should be taken with the use of diffusers around animals Both the choice of essential oils and where animals are should be taken into consideration when in use.

Contents [[hide](#)

1 Includes

2 Names of parts

3 Timer, Mist, and Light Buttons

4 Set up

5 Cleaning and maintenance

6 How to pour out the water

7 Troubleshooting

8 12 Month Warranty:

9 Documents / Resources

10 Related Posts

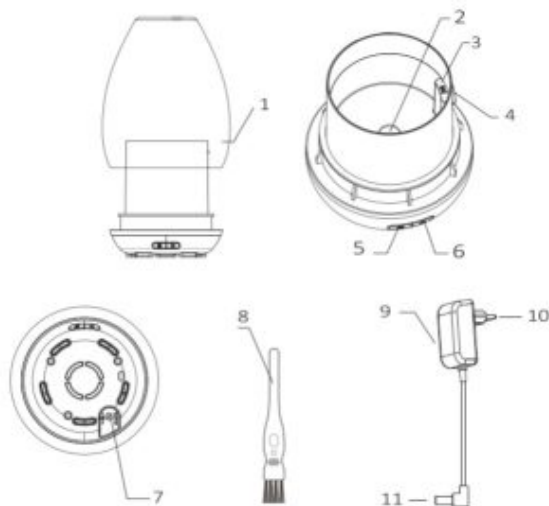
Includes

Main Unit

Output: 24V.d.c

AC Adapter: Input 100240V.a.c

Names of parts



1. Top Cover	7 DC socket
2. Ceramic disc	8 Clean brush
3. Max waterline	9 Adaptor
4. Air outlet	10 AC plug
5. Light button	11 DC plug
6 Mist button	

Timer, Mist, and Light Buttons

Light Button (Left Side)

1. 1st press: turn the light on and the color will change automatically
2. 2nd press: freeze the current color
3. 3rd press: turn off the light

Mist Button (Right side)

1. 1st press. the continuous mist mode will turn on
2. 2nd press. switch to intermittent mist with 15-second intervals
3. 3rd press turn off the mist

Light Settings

1. Press Light button (5) to turn on the light, light color will automatically change from white, red, orange, yellow, green, cyan, blue, and purple cycling
2. Setting the color — during automatic color change, push the light button (5) once your desired color is displayed.
3. Press light button (5) again to stop the light function

Water capacity: 120ml.

This machine has a water shortage detector which will automatically power the unit off if it has no water Please ensure there is always adequate water to avoid the machine being burnt or broken.

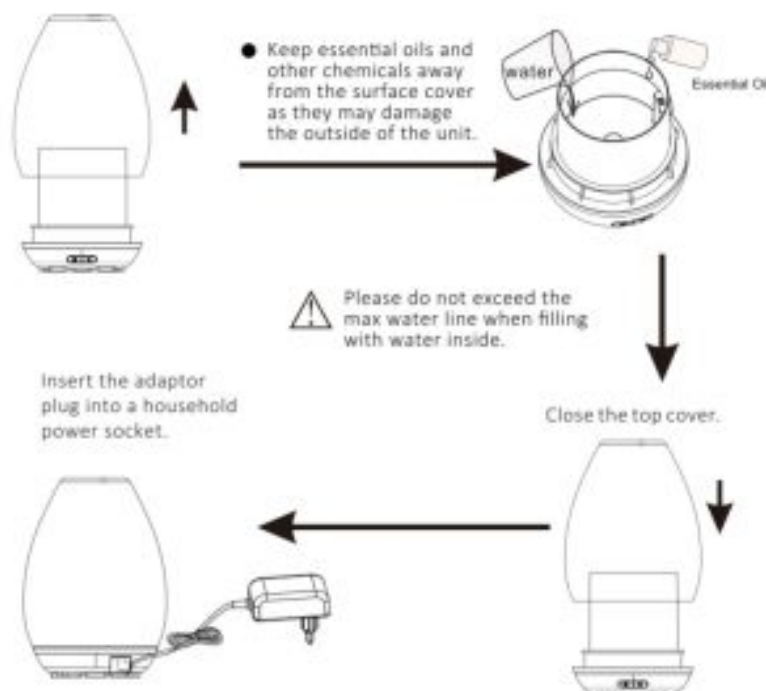
Auto shut off function: When water runs out, the unit will switch off The machine will automatically power off if abnormal overheating is detected.

Operation time: Up to 4 hours.

Set up

Open the top cover

Add around 120ml tap water inside the water tank then add 2 to 3 drops of essential oil, depending on your preference of more or less fragrance



Cleaning and maintenance

The machine should be cleaned after using for 3-5 days continuously, to keep it working normal and extend the lifetime

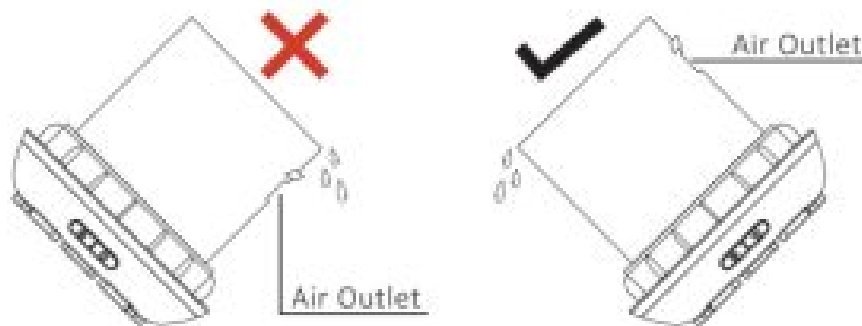
1. Unplug the machine before cleaning.
2. please clean the water tank with a brush and white vinegar or the dilution of detergent and warm water. Other parts of the plastic cover can be cleaned with a soft cloth.
3. Please do not put the whole machine or base into water Temperature of water cannot be over 40 degrees to clean
4. When the machine is not used for a long period of time, please pour out the water in the tank and wipe off the drops, then place it in a shady and cool place to avoid direct sunlight
5. Please clean the tank regularly

Caution:

Please do not pour out water through the air outlet as this can damage the inside of the machine.

How to pour out the water

To avoid water flowing into the air outlet, please pour out the water correctly



Attention

To prevent less or no steam from the diffuser does not add water above the max level mark
To prevent melting damage do not add more than 5drops of essential oil into the container

1. Do not use as a medical respirator
2. Do not use the product when there is abnormal noise or the diffuser is overheating abnormally
3. Do not cover or block the mist outlet or air inlet
4. Do not take off the cover during the operation of the diffuser
5. Do not place near an electric device such as computer TV or audio equipment
6. Do not use hot water or mineral water Always use tap water or distilled water
7. keep outreach of children and pets

Warning

- Important safety instructions.

The following safety precautions should always be followed, to reduce the risk of electric shock, personal injury or fire. It is important to read all of these instructions carefully before using the product and to save them for future reference or new users.

- Unplug the appliance during filling and cleaning.
- This appliance is not intended for use by persons (including children) with reduced physical sensory or mental capabilities, or lack of experience and knowledge unless they have been given supervision or instruction concerning the use of the appliance by a person responsible for their safety.
- Children should be supervised to ensure that they do not play with the appliance.
- Care should be taken when using the appliance due to the emission of hot water vapor.
- The appliance is only to be used with the recommended vaporizing medium. The use of other substances may give rise to a toxic or fire risk.
- Use supplied AC adaptor only.

Troubleshooting

If you start up the machine but it doesn't work, please check the following diagnosis.

Solution	Possible Reasons	Solution
No electricity, not working.	Power is not connected.	Connect the power, press the button.
	Power wire broken or adaptor burnt out.	Please contact the local retailer.
Unable to spray mist or spray is bad	Is the water level low?	Please fill with more water.
	Is there too much water inside the tank?	If the water volume exceeds 120mL (max waterline), the mist volume will be minimal.
	Is the ceramic disc dirty?	Please clean the water tank.
	Is the top cover correctly placed?	Please place the top cover in the correct spot.
	Is the bottom air inlet dirty?	Please clear away the dust in the bottom air inlet.
Main body is leaking water.	Is the top cover correctly covered?	If the top cover is not correctly covered, the water will splash out and fall onto the machine body or table.
	Condensation water on the body may be caused by low-temperature or a humid environment.	Please avoid low-temperature and humid environments.

12 Month Warranty:

Thank you for your purchase from Kmart.

Kmart Australia Ltd warrants your new product to be free from defects in materials and workmanship for the period stated above, from the date of purchase, provided that the product is used in accordance with accompanying recommendations or instructions where provided. This warranty is in addition to your rights under the Australian Consumer Law.

Kmart will provide you with your choice of a refund, repair or exchange (where possible) for this product if it becomes defective within the warranty period. Kmart will bear the reasonable expense of claiming the warranty. This warranty will no longer apply where the defect is a result of alteration, accident, misuse, abuse or neglect.

Please retain your receipt as proof of purchase and contact our Customer Service Centre on 1800 124 125 (Australia) or 0800 945 995 (New Zealand) or alternatively, via Customer Help at Kmart.com.au for any difficulties.


with your product. Warranty claims and claims for expenses incurred in returning this product can be addressed to our Customer Service Centre at 690 Springvale Rd, Mulgrave Vic 3170.

Our goods come with guarantees that cannot be excluded under the Australian Consumer Law. You are entitled to a replacement or refund for a major failure and compensation for any other reasonably foreseeable loss or damage. You are also entitled to have the goods repaired or replaced if the goods fail to be of acceptable quality and the failure does not amount to a major failure.

For New Zealand customers, this warranty is in addition to statutory rights observed under New Zealand legislation.



Documents / Resources

	<p>Kmart 43103768 Tortoise Shell Look Aroma Diffuser [pdf] Instruction Manual</p> <p>43103768, Tortoise Shell Look Aroma Diffuser, 43103768 Tortoise Shell Look Aroma Diffuser, A roma Diffuser</p>
---	---