



Kmart 43080809 Fabric Look Aroma Diffuser Instruction Manual

[Home](#) » [Kmart](#) » Kmart 43080809 Fabric Look Aroma Diffuser Instruction Manual 

Contents

- [1 Kmart 43080809 Fabric Look Aroma Diffuser](#)
- [2 Names of parts](#)
- [3 Power and Light Buttons](#)
- [4 Set up](#)
- [5 Care and maintenance](#)
- [6 How to pour out the water](#)
- [7 Troubleshooting](#)
- [8 12 Month Warranty](#)
- [9 Documents / Resources](#)
- [10 Related Posts](#)



Kmart 43080809 Fabric Look Aroma Diffuser



Create an aromatic, soothing atmosphere in your home. Use ultrasonic vibration to transform water into mist. Essential oil can be added to create fragrance.

IMPORTANT

Care should be taken with the use of diffusers around animals.

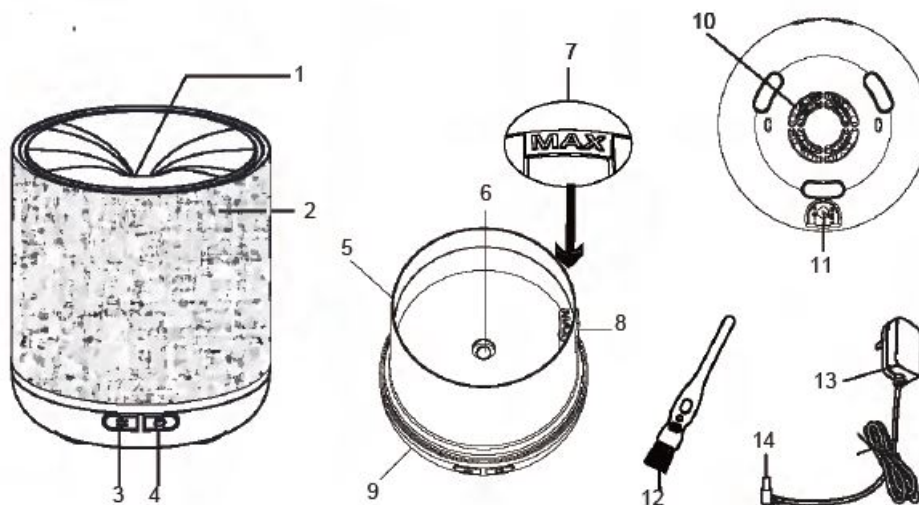
Both the choice of essential oils and where animals are should be taken into consideration when in use.

Includes

Main Unit

AC Adapter : Input 100~ 240V.a.c Output 24V.d.c

Names of parts



1. Mist outlet
2. Top cover
3. Light button
4. Power button

5. Water tank
6. Ceramic disc
7. Max water
8. Air outlet
9. Main body
10. Air inlet
11. DC socket
12. Clean brush
13. Adaptor
14. DC plug

Power and Light Buttons

- **Power button (right side)**

1st press: continuous mist on with light.

2nd press: switch to intermittent mode at 15 seconds intervals.

3rd press: turn off the unit.

- **Light button (left side)**

1st press: turn on the light.

2nd press: switch to dim mode.

3rd press: switch to light flicker mode.

4th press: turn off the light.

- **Light effect: LED, dim and light flicker modes.**

- **Water capacity: 200ml.** This machine has a water shortage detector which will automatically power the unit off if it has no water. Please ensure there is always adequate water to avoid the machine being burnt or broken.

- **Auto shut off function:** When water runs out, unit will switch off.

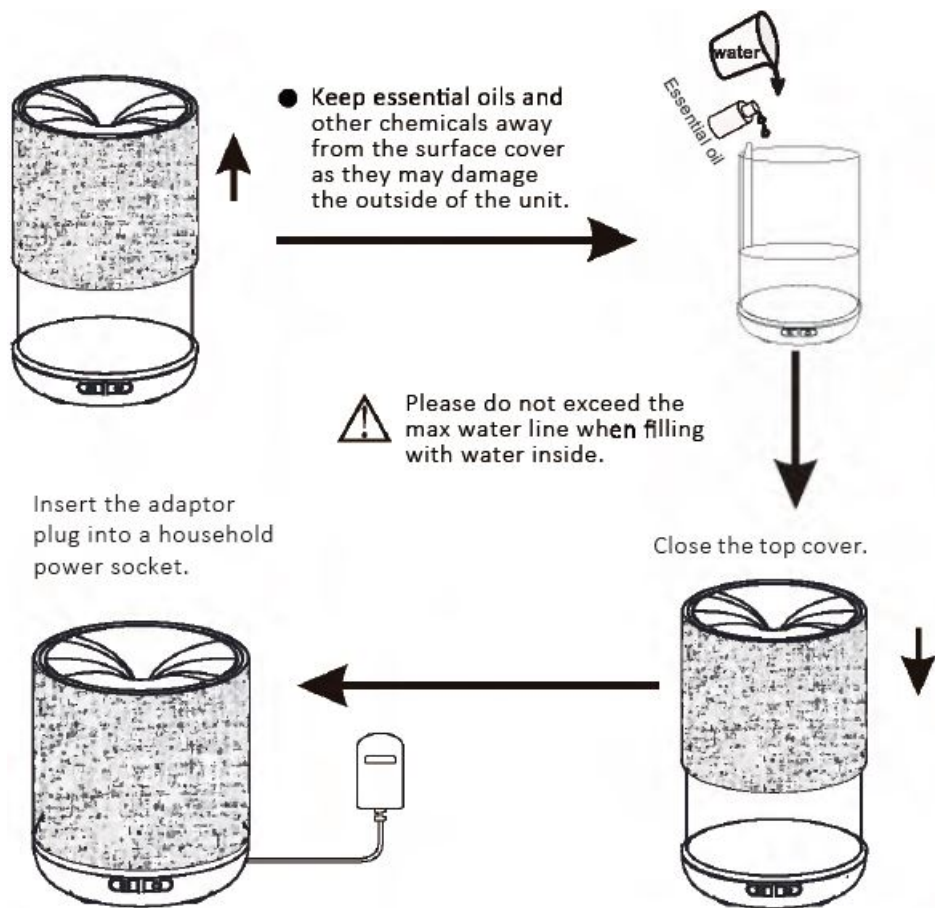
The machine will automatically power off if abnormal overheating is detected.

- **Operation time:** Up to 6 hours.

Set up

Open the top cover.

Add around 200mL tap water inside the water tank then add 2 to 3 drops of essential oil, depending on your preference of more or less fragrance.



Care and maintenance

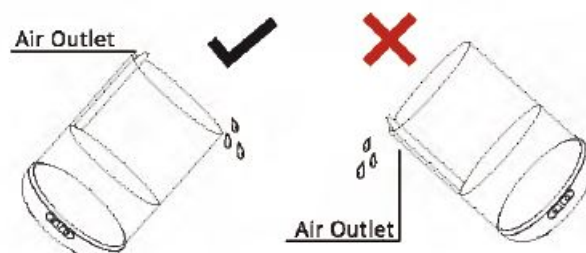
1. Only use the power source that is supplied with the unit.
2. Always cut off the power source before cleaning.
3. Essential oil should not get in contact with the surface of the unit.
4. Do not drop water from the air outlet side.
5. Do not use any hard or sharp object to press the vibration plate of the device.
6. Please use a cotton swab dipped in white vinegar to gently clean the water tank.
7. Do not use strong detergents to clean the device.
8. Please clean the tank regularly.

Caution:

Please keep the device dry if it is not in use for some time.

How to pour out the water

To avoid water flowing into the air outlet, please pour out the water correctly.



Attention

- To prevent less or no steam from the diffuser, do not add water above the max level mark.
 - To prevent melting damage, do not add more than 5 drops of essential oil into the container.
1. Do not use as a medical respirator.
 2. Do not use the product when there is abnormal noise or the diffuser is overheating abnormally.
 3. Do not cover or block the mist outlet or air inlet.
 4. Do not take off the cover during operation of the diffuser.
 5. Do not place near an electric device such as a computer, TV or audio equipment.
 6. Do not use hot water or mineral water. Always use tap water or distilled water.
 7. Keep out reach of children and pets.

Warning

- Important safety instructions.
The following safety precautions should always be followed, to reduce the risk of electric shock, personal injury or re. It is important to read all of these instructions carefully before using the product and to save them for future reference or new users.
- Unplug the appliance during lling and cleaning.
- This appliance is not intended for use by persons (including children) with reduced physical, sensory or mental capabilities, or lack of experience and knowledge unless they have been given supervision or instruction concerning use of the appliance by a person responsible for their safety.
- Children should be supervised to ensure that they do not play with the appliance.
- Care should be taken when using the appliance due to the emission of hot water vapour.
- The appliance is only to be used with the recommended vaporizing medium. The use of other substances may give rise to a toxic or fire risk.
- Use supplied AC adaptor only.

Troubleshooting

If you start up the machine but it doesn't work, please check the following diagnosis.

Problems	Possible Reasons	Solution
No electricity, not working.	Power cable not connected.	Connect the power, press the button.
	Power wire broken or adaptor burnt out.	Please contact local retailer.
Unable to spray mist or spray is bad.	Is the water level low?	Please fill with more water.
	Is there too much water inside the tank?	If the water volume exceeds 200mL (max water line), the mist volume will be minimal.
	Is the ceramic disc dirty?	Please clean the water tank.
	Is the top cover correctly placed?	Please place top cover in the correct spot.
	Is the bottom air inlet dirty?	Please clear away the dust in the bottom air inlet.
Main body is leaking water.	Is the top cover correctly covered?	If the top cover is not correctly covered, the water will splash out and fall onto the machine body or table.
	Condensation water on the body may be caused by low-temperature or a humid environment.	Please avoid low-temperature and humid environments.

12 Month Warranty

Thank you for your purchase from Kmart.

Kmart Australia Ltd warrants your new product to be free from defects in materials and workmanship for the period stated above, from the date of purchase, provided that the product is used in accordance with accompanying recommendations or instructions where provided. This warranty is in addition to your rights under the Australian Consumer Law.

Kmart will provide you with your choice of a refund, repair or exchange (where possible) for this product if it becomes defective within the warranty period.


Kmart will bear the reasonable expense of claiming the warranty. This warranty will no longer apply where the defect is a result of alteration, accident, misuse, abuse or neglect.

Please retain your receipt as proof of purchase and contact our Customer Service Centre on 1800 124 125 (Australia) or 0800 945 995 (New Zealand) or alternatively, via Customer Help at Kmart.com.au for any difficulties with your product. Warranty claims and claims for expenses incurred in returning this product can be addressed to our Customer Service Centre at 690 Springvale Rd, Mulgrave Vic 3170.

Our goods come with guarantees that cannot be excluded under the Australian Consumer Law. You are entitled to a replacement or refund for a major failure and compensation for any other reasonably foreseeable loss or damage. You are also entitled to have the goods repaired or replaced if the goods fail to be of acceptable quality and the failure does not amount to a major failure.

For New Zealand customers, this warranty is in addition to statutory rights observed under New Zealand legislation.

Documents / Resources

	Kmart 43080809 Fabric Look Aroma Diffuser [pdf] Instruction Manual 43080809, Fabric Look Aroma Diffuser, 43080809 Fabric Look Aroma Diffuser, Aroma Diffuser, Diffuser
---	---