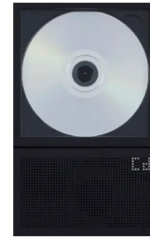


Instant Disk Audio
km5 CP2-002
Instant Disk
Audio CP2 CD
Player



km5 CP2-002 Instant Disk Audio CP2 CD Player User Manual

[Home](#) » [km5](#) » km5 CP2-002 Instant Disk Audio CP2 CD Player User Manual 

Contents

- [1 km5 CP2-002 Instant Disk Audio CP2 CD Player](#)
- [2 Product Information](#)
- [3 Quick Manual](#)
- [4 Part Name](#)
- [5 Scope of Warranty](#)
- [6 Frequently Asked Questions \(FAQ\)](#)
- [7 Documents / Resources](#)
 - [7.1 References](#)
- [8 Related Posts](#)

Instant Disk Audio

km5 CP2-002 Instant Disk Audio CP2 CD Player



Product Information

Specifications

- Compliance: Part 15 of FCC Rules
- Radiation Exposure Limits: FCC approved for uncontrolled environment
- Minimum Distance: 0cm between radiator and body

Quick Manual

Please be sure to read the instructions for operating the CP2 CD player with Bluetooth and for safe handling before use.

Contents

CD player x1, Manual x1

- Product Name: Instant Disk Audio CP2
- Model Number: CP2-002
- Disk Format: CD/CD-R/CD-RW/MP3
- Disk Size: 12cm / 8cm
- APS(Shockproof): 2M SDRAM
- Connection: Bluetooth/ 3.5mm Stereo earphone jack
- Compatible Standards: Bluetooth@5.1 (Mode AC6956C)
- Reachable Range: About 10m
- Lithium Ion Battery: 1800mAh
- Charging Method: USB Type-C
- Charging Time: About 3 hours
- Play Time: About 7 hours(Using Bluetooth) About 6 hours(Using speaker)
- Operating Temperature: 0°C~40°C

- Storage Temperature: -50°C~60°C
- Size: 140mm x 225mm x 27mm
- Weight: 435g

Notes on Bluetooth®

1. This product is a wireless equipment that uses 2.400-2.4835GHz.

The bandwidth of mobile object identification device can be avoided.

The radio wave system uses the GFSK system, and the interference distance is approximately 10m.

2. Before using this product, please check whether other wireless stations (*1) are operating nearby.

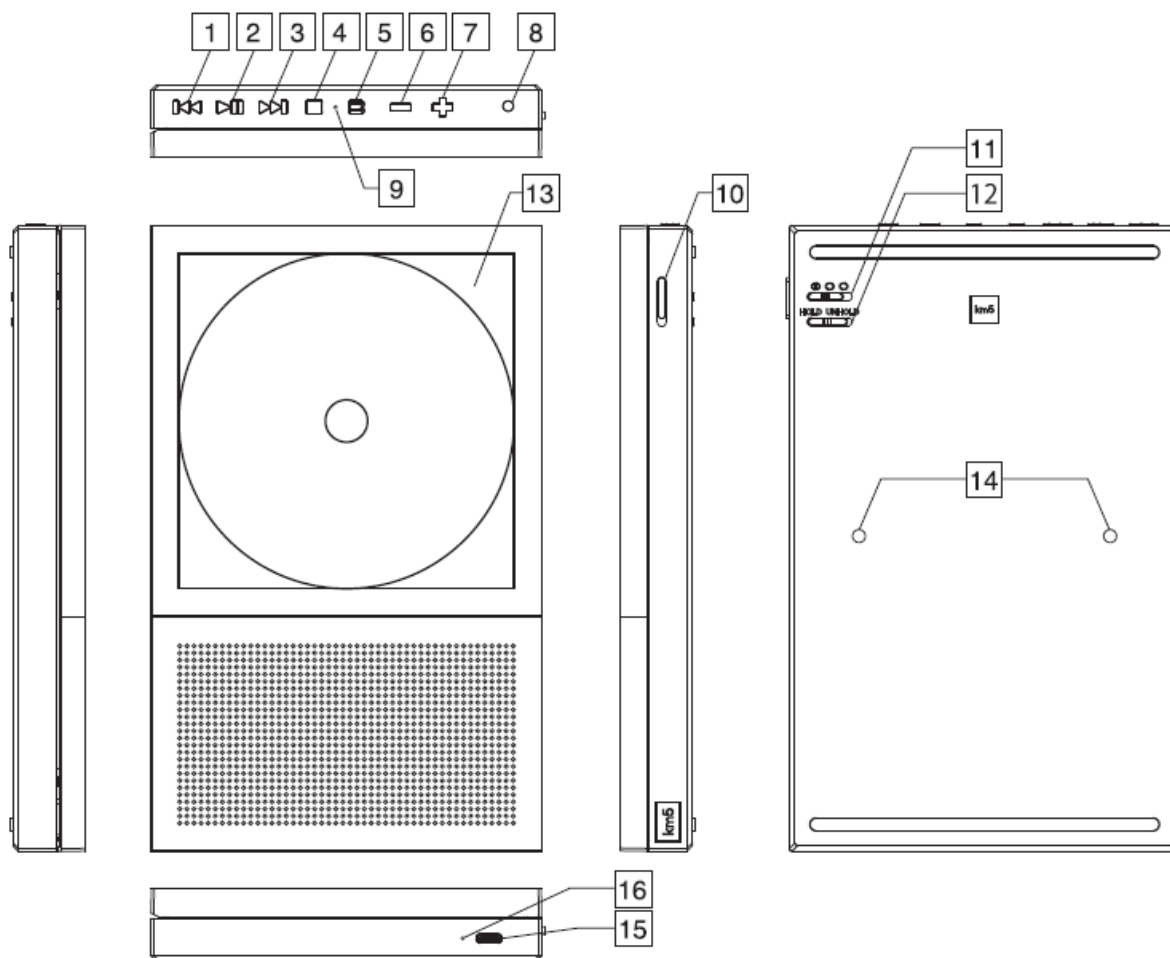
If radio wave interference occurs between this product and another wireless station (*1), please change the location of use or stop using this product.

In addition to industrial, scientific, and medical equipment that uses the same 2.4GHz frequency as this product, other similar radio stations, school radio stations for mobile object identification that require a license to be used in factory production lines, etc. This refers to specified low-power radio stations that do not require radio communication and amateur radio stations.

Warning

1. Do not use it in equipment where malfunction may have a huge impact. In rare cases, the product may be affected by external radio waves of the same frequency or mobile phone radio waves, resulting in malfunction, reduced operation, or non-operation.
Do not use this product in places where the use of radio waves is prohibited, such as hospitals.
2. The radio waves from this product may affect electronic devices and medical devices (e.g. pacemakers).
3. Please note that we will not be held responsible for any accidents or social damage caused by the failure of this product.

Part Name



1. Last song/Long press for fast reverse
2. Play/Pause/Long press to power on
3. Next song/Long press for fast forward
4. Stop/Long press to power off
5. Bluetooth
6. -Volume down
7. + Volume up
8. 3.5mm Stereo earphone jack
9. Bluetooth lamp
10. Open button
11. Mode switch <Loop 1 song/play all songs/loop play all songs>
12. Hold switch
13. Card tray (120mmx120mmx2mm)
14. Screw hole
15. USB Type-C
16. Charging lamp

Bluetooth connection method

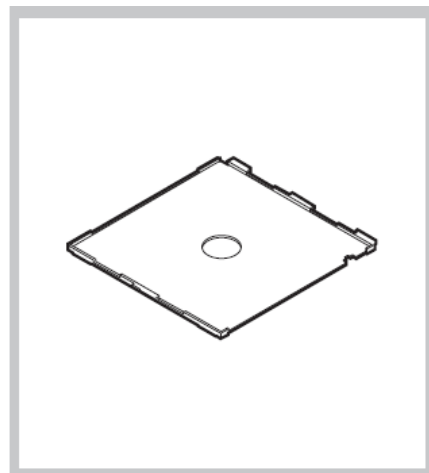
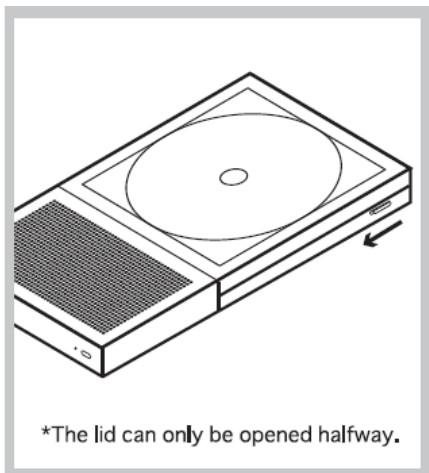
Turn on the product and press and hold the Bluetooth button.

The blue LED lamp will flash and the device will be in standby mode.

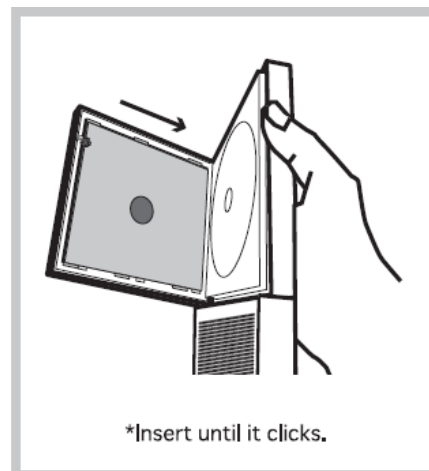
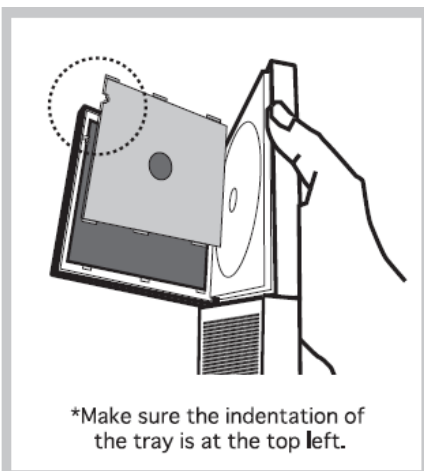
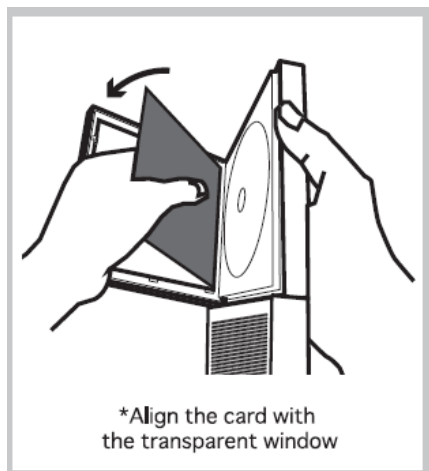
Check whether the Bluetooth connected device is paired with another device and wait for connection near this product. Once the connection is complete, the blue LED lamp will turn on.

A1-how to insert the card

1. Slide the open button to open the lid
2. Slide and remove the tray
3. The tray holds 12cmx12cmx1.8mm cards.



4. Place the card on the lid
5. Place the tray
6. Slide the tray to the right to install it



km5 Inc. Support Center

If you need repairs, please contact us by email. (It may take several days for a reply.) mail:

customer_support@km5.co.jp



Scope of Warranty

The following cases are not covered by the one year warranty.

- If you cannot submit the defective product.
- If you are unable to present your receipt.
- If the receipt is forged.
- If the user modifies/disassembles/repairs, etc.
- If the product malfunctions due to temperature/humidity/vibration exceeding the normal environment.
- Malfunctions due to drops or shocks that occur after purchase.
- Failures caused by external factors such as disasters.(earthquakes/lightning/flood damage/abnormal voltage/etc.)
- If any other non-warranty reason is discovered.

■ CP1/2 Q&A



<https://km5.co.jp/pages/q-a>

■ km5 Inc.



<https://www.km5.co.jp/>

This device complies with Part 15 of the FCC Rules. Operation is subject to the following two conditions :

1. this device may not cause harmful interference, and
2. this device must accept any interference received, including interference that may cause undesired operation.

Frequently Asked Questions (FAQ)


• Q: What should I do if the device causes interference?

A: If interference occurs, try moving the device to a different location away from other electronic devices.

• Q: Can I modify the device?

A: Any modifications not approved by the manufacturer may void your warranty and authority to operate the equipment.

Documents / Resources

	km5 CP2-002 Instant Disk Audio CP2 CD Player [pdf] User Manual 252, 2BFRT-252, 2BFRT252, CP2-002 Instant Disk Audio CP2 CD Player, CP2-002, Instant Disk Audio CP2 CD Player, Disk Audio CP2 CD Player, Audio CP2 CD Player, CP2 CD Player, CD Player, Player
---	--

References

- [User Manual](#)

Manuals+. Privacy Policy

This website is an independent publication and is neither affiliated with nor endorsed by any of the trademark owners. The "Bluetooth®" word mark and logos are registered trademarks owned by Bluetooth SIG, Inc. The "Wi-Fi®" word mark and logos are registered trademarks owned by the Wi-Fi Alliance. Any use of these marks on this website does not imply any affiliation with or endorsement.