

CB-3 Concrete Batch Controller

Multi-Scale Automated Batching System with PC Program

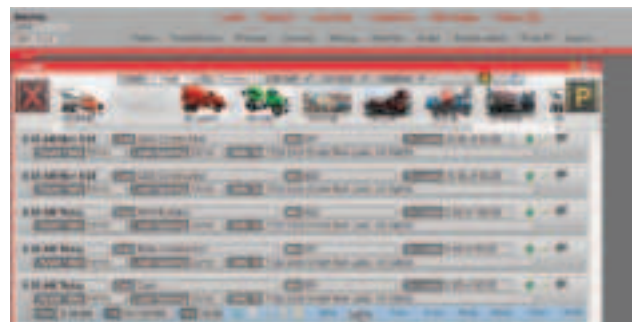
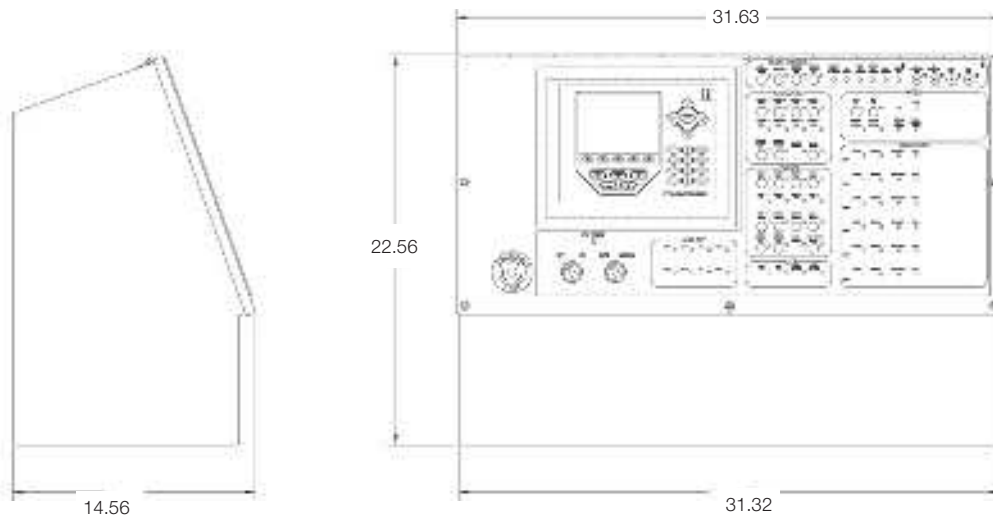
Part Number/Price

Part#	Description	Est. Weight	Price
177746 *	CB-3 concrete batching controller, metered water, PC included	180 lb	\$22,500.00
177747 *	CB-3 concrete batching controller, weighed water, PC included	180 lb	\$22,995.00
FLD-INSTALL	Factory field installation required (minimum 3 days on site)		\$1,395.00 per day
FLD-INSTALLSA	Factory field installation, Saturday		\$2,095.00
FLD-INSTALLSU	Factory field installation, Sunday		\$2,790.00

Options/Accessories

Part #	Description	Price
175877	Upgrade kit CB-2 to CB-3, PC included	\$9,445.00
179209	Accessory kit (includes monitor, keyboard, USB hub and mouse)	\$302.00
179210	Monitor, Acer	\$240.00
179211	Keyboard, Microsoft	\$45.00
179212	Mouse, Microsoft	\$42.00
185667	USB Hub	\$13.95
186277	Wireless USB adapter WI-FI	\$60.00
196700	4 Additional Admix controller	Consult

* Completed questionnaire required prior to ordering this system. Questionnaire available at www.ricelake.com/resources/product-questionnaires



Counterpart®

Configurable Counting Indicator



Standard Features

- AC operated (battery operation is optional)
- LCD graphic transmissive display for indoor viewing
- Lb/kg/oz/g weight display conversion
- Single- or dual-channel models with serial scale input
- Mix and match platforms with console
- Four setpoint outputs for counting
- Two RS-232 ports for connecting peripherals
- Ethernet TCP/IP
- Scanner input (RS-232)
- PC software utility (Revolution®) for setup
- 150 item memory

Options:

- Battery
- USB for USB keyboard
- WeighVault™ for Counterpart

Approvals



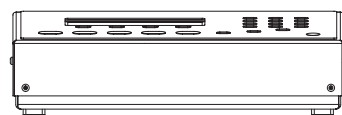
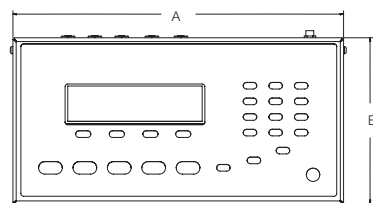
DIG® Scale Base



Shown with BenchMark®
Scale Base and Bracket

Dimensions

A	12.3 in (312.4 mm)	C	3.94 in (100 mm)
B	6.17 in (156.7 mm)		



Specifications

Power Source:

Input: 100-240 VAC, 47-63 Hz, 5 watts,
U.S. power cord
Output: 9-12 V, 1.5 A max

Excitation Voltage:

5 VDC

Analog Signal Input Range:

0-4.5 mV/V

Analog Specifications:

Grad minimum: .3 μ V/grad
Input sensitivity: 1.5 μ V/grad recommended
Zero adjustment range: 0-100%
or per region settings
A/D conversion rate: 7.5, 15, 30 samples per second
Load cells per scale: 8 x 350 Ω ; 16 x 700 Ω
Scale channels: 1 or 2
Linearity: ± 0.017 full scale

Circuit Protection:

RFI, EMI, ESD protection

Digital I/O:

Four

Display:

Viewing area: 240 x 64 pixels, transmissive VGA
liquid crystal display (LCD) with adjustable contrast

Keypad:

24 buttons, full keypad (alpha numeric)

Resolution:

Weight display resolution: up to
100,000 graduations
Counting resolution: 1/1,000,000

Communications and Setpoint:

Two RS-232 ports support up to 115,200 bps
20 mA
Ethernet port
Setpoint output

Status Annunciators:

PCS, motion, low battery, insuff, recomp, scale
number, gross, net, zero

Units of Measure:

Pounds, kilograms, grams, ounces

Prints:

Standard EPL label format; format is changeable to
work with virtually any printer

Optional Battery:

Type: Lithium-ion
Charge time: 6 to 8 hours
Charge cycles: 400-1,200
Estimated runtime: 24-32 hours with one 350 Ω
load cell base

Operating Temperature:

32° F to 104° F (0° C to 40° C)

Operating Humidity:

85%

Physical Dimensions:

Indicator only (L x W x H): 12.25 x 6.25 x 4.0 in
(311.15 x 158.75 x 101.6 mm)

Warranty:

Two-year limited warranty

Approvals:

NTEP CC 12-110
CE
UL listed
Measurement Canada