

REXING®

V3C

Quick Start Guide

The information in this manual is subject to change without notice.
Rexing All Rights Reserved

www.rexingusa.com



202307REV1

Activate Your **18-Month Warranty** & Choose Your **FREE Gift!**

Activate within 30 days of purchase to claim your free gift and extend your limited 12-month warranty to 18 months.

Scan The QR To Activate &
Select Your Free Gift

**SCAN
ME!**



<https://www.rexingusa.com/productreg/>

1. Overview

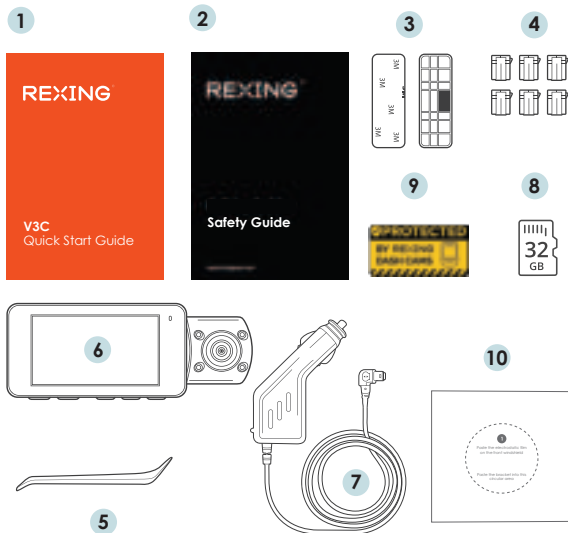
Thank you for choosing REXING! We hope you love your new product as much as we do. If you need assistance, or have any suggestions to improve it, please contact us. You can reach us via care@rexingusa.com or call us at [\(203\)800-4466](tel:(203)800-4466). Our support team will respond you as soon as possible.

Always a surprise in Rexing. Check us out here.

- <https://www.facebook.com/rexingusa/>
- <https://www.instagram.com/rexingdashcam/>
- <https://www.rexingusa.com/support/registration/>

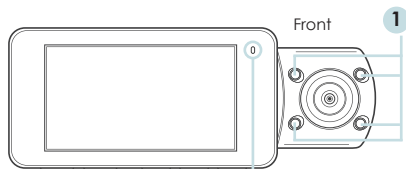


2. What's in the Box

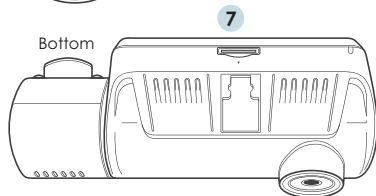
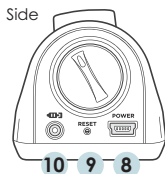
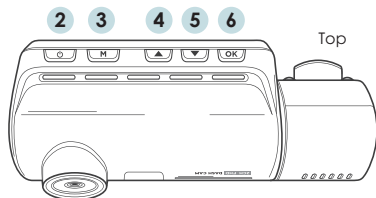


1. V3C Quick Start Guide
2. Safety Guide
3. 3M Adhesive Mount
4. Cable Adhesive Spacer
5. Cable Management Tool
6. Rexing V3C Dashboard Camera
7. Car Power Connector (12ft)
8. 32GB SD Card
9. Warning Sticker
10. Electrostatic Sticker

3. Camera Overview



The camera is recording when the LED is flashing red. The device is charging or powered on when the LED is solid red.



1. 4 IR Lights
2. Power Button / Screen Toggle Button
3. Menu Button / Mode Button
4. Up Navigation Button / Front and Rear Switch Button
5. Down Navigation Button / Mic Button
6. OK (Confirm) Button / Emergency Lock Button / Record Button
7. Micro SD Card Slot
8. Power / USB Charging Port
9. Reset Button
10. Rear Camera Port (currently no support)

Screen Icons

Exposure Value

WDR Mode (On)

Wi-Fi (Not Connected)

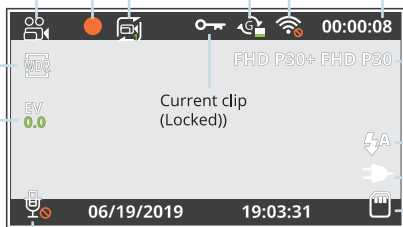
Recording Standby Status

Recording Time (Current Clip)

Recording (On)

G Sensor Level

Loop Recording Time



Video Resolution

Current clip (Locked)

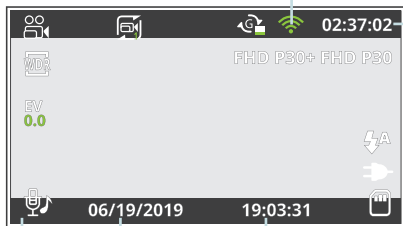
IR Lights

Battery Charging

Memory Card (Inserted)

MIC (Off)

Wi-Fi (Connected)



Memory Card Remaining Time

MIC (On)

Current Date (MM/DD/YYYY)

Time (24h)

4. Installation

Step 1

Installing the Electrostatic Stickers

1.1 Prepare Your Windshield

Thoroughly cleanse your windshield with either water or alcohol. Follow this by wiping it dry using a clean, dry cloth to ensure a spotless surface.

1.2 Position the Sticker

Next, carefully peel off the protective film from the electrostatic sticker.

Attach the sticker to the windshield, ideally behind the rear-view mirror.

This position is recommended to avoid obstructing your view



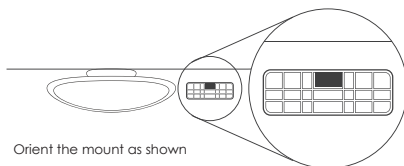
Step 2

Install the Dash Cam

Place the 3M tape on the mount and properly orient the mount square to the roof and hood line of the vehicle.

Firmly press the mount onto the windshield. Wait **at least 20 minutes before mounting the camera.**

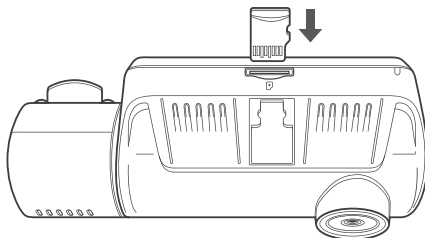
Orient the mount as shown on the illustration.



Step 3

Insert the memory card

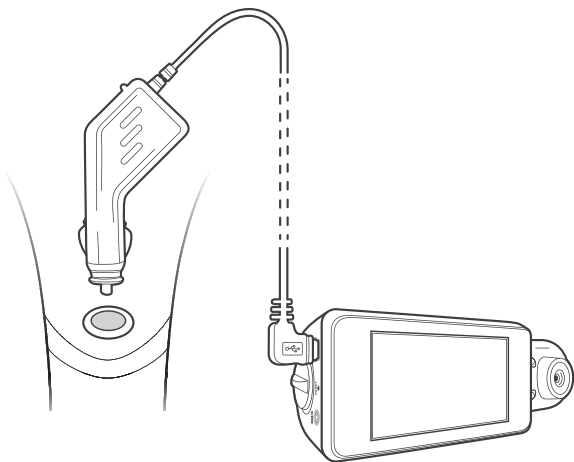
The Rexing V3C accepts [Class 10/UHS-3 or higher] Micro SD memory cards up to 256GB. You will need to insert a memory card before you can begin recording. **Before inserting or removing a memory card, first ensure you've powered down the device.** Gently push the memory card in until you hear a click, and allow the spring release to push the card out.



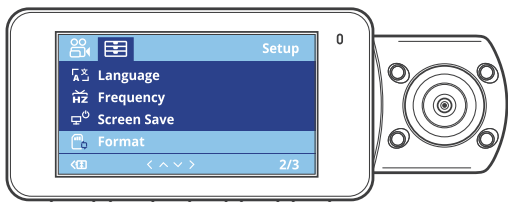
Step 4

Power the Camera and Format the Memory Card

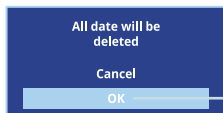
Power on the camera by connecting the charger to the car cigarette lighter and camera. To ensure the V3C records to your memory card properly and without error, **Before you start using a new memory card, you must format the card within the camera using the format function.** Always backup important data stored on the memory card before formatting.



To format the memory card, make sure you have inserted your memory card, then turn on the device by connecting to a power source. Press **OK** to stop recording. Then press the **MENU** button twice to enter the System Setup Menu.



Press the Menu
button twice



Press the OK button to
confirm formatting the card

Use the **UP** and **DOWN** navigation buttons and go to the Format setting. Press the **OK** button to confirm the selection.

You may now disconnect from power. The camera will shut down after 3 seconds. The camera should begin recording automatically the next time it is powered on.

Step 5

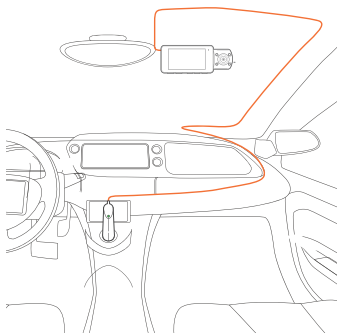
Installing the Camera onto the windshield

Place the camera on the mount and carefully route the power cable around the windscreen and tuck in under the trim.

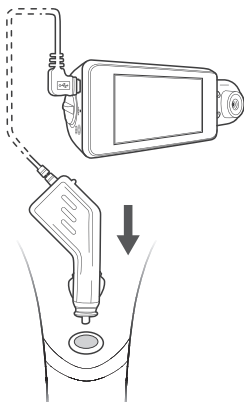
Plug the car charger cable to a 12V DC power outlet or the car cigarette lighter.

Connect car charger to the camera. The camera will auto-start recording once it's powered on.

Connect the power cable to the dash cam



Plug Mini USB Connector to the dash cam



Plug charger into power outlet or cigarette lighter

5. Basic Operation

Device Power

The device is automatically powered on when plugged into a 12V accessory socket or cigarette lighter and received a charge (i.e. the vehicle is started).

To turn the device on manually, press and hold the **Power** button until the welcome screen appears.

The camera will automatically start recording when power on.



Press and hold the Power button to turn the device on manually

Menu Settings

Power the camera on. If the camera is recording, press the **OK** button to stop recording.

Hold the **MENU** button and toggle to the desired mode. Press the **MENU** button once to enter the settings menu for a Mode. Press the **MENU** button twice to enter the System Settings (Set up).

Video Recording

The camera will automatically start recording when the device receives charge. The LED lights and red dot will blink device when recording. Press the **OK** button to stop recording.

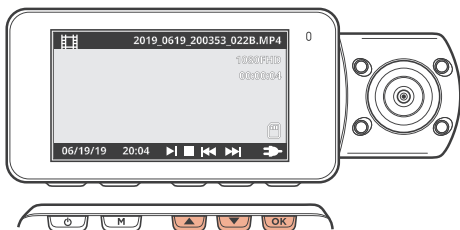


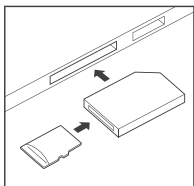
Video Playback

Playback of videos can be done on the device or a computer.

To playback a video on the device, toggle to the Playback mode. Use the **UP** and **DOWN** navigation buttons to toggle to the desired video. Press the **OK** button to play.

During playback use the **OK** (pause), **UP** navigation (rewind) and **DOWN** navigation (fast forward) buttons to control the video playback.





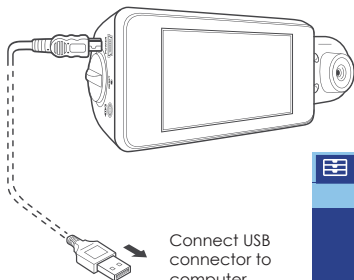
To playback a video on the computer, either use an SD card adapter or connect the device to the computer directly using the USB cable.

To playback a video using an SD card adapter, remove the memory card and insert it into an SD card adapter. Place the adapter in the computer. Then place the adapter into the computer.

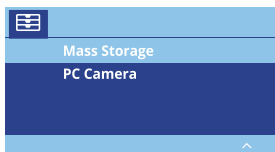
To playback a video using USB cable, connect the USB Cable to the device and the computer. After the device is powered on, press the **OK** button to select Mass Storage.

On the computer, navigate to device drive. The videos are stored at: \CARDV\MOVIE. The locked videos are stored at: \CARDV\MOVIE\RO.

Select the video to playback.



Connect USB connector to computer



Select Mass Storage

Wi-Fi Connect

Step 1

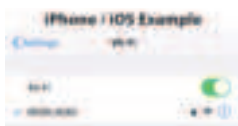
With your dash cam powered on, hold the **UP** navigation button to enable the Wi-Fi function. The Wi-Fi name (aka the SSID) and password for the dash cam should be displayed on-screen.



Step 2

On your mobile device, navigate to your Wi-Fi settings. Connect to your dash cam's Wi-Fi by tapping its name when it appears. Enter your dash cam's Wi-Fi password if you are prompted to do so.

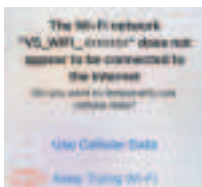
Note: On some mobile devices, you may have to try to connect more than once. To ensure you've successfully connected, your mobile device's screen should resemble the examples shown.



Step 3

Once you're connected to the dash cam, open the Rexing Connect app on your mobile device.

Please select "Keep Trying Wi-Fi" if you see the notification on the right.



Step 4

In the app, hit the "Connect" button to connect to your dash cam, allowing you to access live view and view/download your recordings.

Note: Hold to the **UP** button for 2 seconds to disconnect the Wi-Fi.

Rexing Connect App

Easily download the app by scanning the QR code below or search via the App Store or Google Play.



Wi-Fi Connect Troubleshooting

If you bring up the Rexing connect app and cannot connect your phone to the dash cam please go to

<https://www.rexingusa.com/wifi-connect/>

OR scan the QR code below.



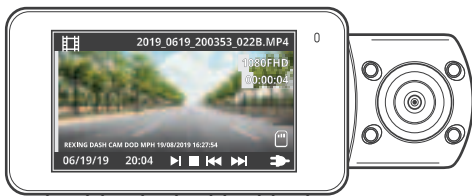
Taking Photos

To take a photo, stop video recording and toggle to the Photo Mode.

Press the **OK** button to take a photo.

To view a photo, stop video recording and toggle to the Playback Mode.

Press UP and DOWN navigation buttons to toggle through your photos.



To delete a photo, stop video recording and toggle to the Playback Mode and toggle through the videos and photos to the one you want to delete.

Press the **MENU** to toggle the Delete option.

Press the **OK** Button and select Delete Current or Delete All.

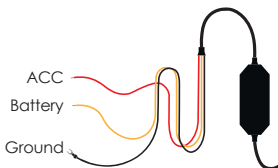


Parking Monitor (Parking Surveillance Mode)

Parking monitor provides surveillance on your parked vehicle. When the engine is off, the hardwire kit is used to provide continuous power and protect your car battery from being discharged.

Option 1: Vibration Detection

To enable the Parking Monitor, you'll need to connect it with a Smart Hardwire Kit (sold separately).



This feature will allow the dash cam to switch to parking mode automatically if the vehicle's engine turns off and switch back to the normal recording after the vehicle's engine turns on.

Gravity Sensing Record:

The Gravity Sensing detects significant or sudden movement (such as an impact or collision), it will trigger an event recording. We suggest setting the "Gravity Sensing" to High sensitivity for Parking Mode Recording.

Note:

If you do not use the parking mode function, please change the Gravity Sensing sensitivity to low. Otherwise, the video will easily be locked and the video cannot be deleted by the loop recording function. This will cause the memory card to be full of locked videos and cause the recorder to fail to work normally.

Please DO NOT ENABLE the Parking Monitor function in the settings of the dash cam WITHOUT connecting a smart hardwire kit. They may cause a malfunction.

Option 2: Motion Detection

To use this feature, you need to connect it with a Rexing Intelligent Hardwire Kit (sold separately). **Make sure that the Parking Mode is turned off on your dash cam, otherwise it may cause a malfunction.**

Once the sensor has detected MOTIONS. The intelligent hardwire kit will power up the dash cam automatically and start recording until the MOTION is cleared.

Please go to

<https://www.rexingusa.com/hwk-install/>

to watch a video tutorial about the installation or scan the QR code below.



6. Warranty & Support

Warranty

The Rexing V3C Dash Cam comes with a full 12-month warranty. If you register your product on our official site (<https://www.rexingusa.com/support/registration>), you can extend the warranty to 18 months.

Support

If you have any questions regarding your product, please do not hesitate to contact us at care@rexingusa.com, or call us at (877) 740-8004. Queries are typically answered within 12-24 hours.

Your opinion matters

Rexing is firmly committed to always improving our products, services, and user experience. If you have any thoughts on how we can do even better, we welcome your constructive feedback and suggestions.

Connect with us today at care@rexingusa.com

Thank you for choosing Rexing!

FCC ID: 2AW5W-V3

This device complies with part 15 of the FCC Rules. Operation is subject to the following two conditions: (1) This device may not cause harmful interference, and (2) this device must accept any interference received, including interference that may cause undesired operation.

Changes or modifications not expressly approved by the party responsible for compliance could void the user's authority to operate this equipment.

®



MADE IN CHINA