



KLUS C1575 Design LED Mounting Extrusion Directory Instruction Manual

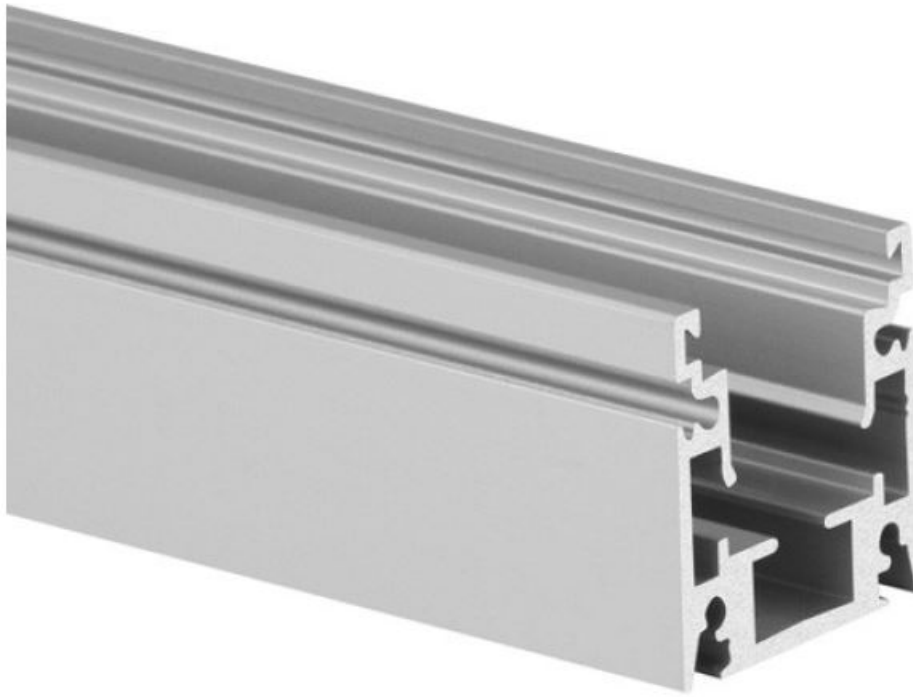
[Home](#) » [KLUS](#) » KLUS C1575 Design LED Mounting Extrusion Directory Instruction Manual 

Contents

- [1 KLUS C1575 Design LED Mounting Extrusion Directory](#)
- [2 PRODUCT DESCRIPTION](#)
- [3 TECHNICAL SPECIFICATION](#)
- [4 AVAILABLE LENGTHS](#)
- [5 TECHNICAL DRAWING](#)
- [6 RELATED PRODUCTS COVERS](#)
 - [6.1 END CAPS](#)
- [7 ACCESSORIES](#)
- [8 SEALING COMPONENTS](#)
- [9 Documents / Resources](#)
 - [9.1 References](#)
- [10 Related Posts](#)



KLUS C1575 Design LED Mounting Extrusion Directory



PRODUCT DESCRIPTION

- For installation on facades
- Designed for IP68 and IK10 protection ratings
- Corrosion resistance at high salinity
- Corresponds to the width of the HR-MAX facade system
- Adjustable lighting angle

Fill empty fields

Product nr.	
Fixture type	
Company	
Job name	
Date	

TECHNICAL SPECIFICATION

Application

decorative lighting.

Mounting

- to the surface, using dedicated accessories,
- the cover is cut to the length of the extrusion.

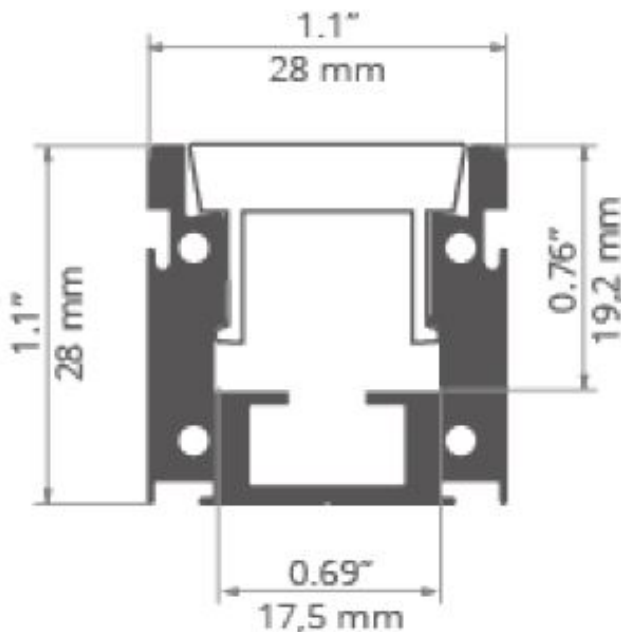
Additional information

- possibility to fasten the lighting fixture with the back or side to the mounting surface,
- possibility of smooth transition from a surface-mounted into a recessed fixture.

AVAILABLE LENGTHS

Ref. nr.	surface finish	available lengths
C1844ANODA_2	Silver anodized	78.75"
C1844ANODA_3	Silver anodized	118.11"

TECHNICAL DRAWING



RELATED PRODUCTS COVERS

SEMI-TRANSPARENT COVERS



HR-21 frosted
Cover
Ref: 17152

END CAPS

REGULAR END CAPS



HR-OPTI-STN End
cap
Ref: 24387

ACCESSORIES

FASTENERS & MOUNTING ACCESSORIES

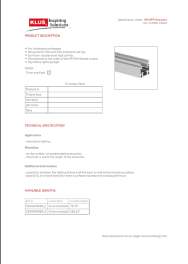


HR-OPTI
Mounting
bracket
Ref: 42121

SEALING COMPONENTS



- Waterproof coupler
Ref: 42702
- Waterproof splitter
Ref: 42703
- M16x1,5-L90 Angular gland
Ref: 42289

	<p>KLUS C1575 Design LED Mounting Extrusion Directory [pdf] Instruction Manual C1575, Design LED Mounting Extrusion Directory, C1575 Design LED Mounting Extrusion Directory, LED Mounting Extrusion Directory, Mounting Extrusion Directory, Extrusion Directory</p>
---	--

References

- **[KL](#)** [Klusdesign.com | Manufacturer of LED Extrusions, LED Profiles, and new LED Lighting integration designs - KLUS LLC](#)
- **[KL](#)** [HR-21 frosted Cover - 17152 | Klusdesign.com](#)
- **[KL](#)** [M16x1,5-L90 Angular gland - 42289 | Klusdesign.com](#)
- **[KL](#)** [HR-OPTI-STN End cap - 24387 | Klusdesign.com](#)
- **[KL](#)** [HR-OPTI Mounting bracket - 42121 | Klusdesign.com](#)
- **[KL](#)** [Waterproof coupler - 42702 | Klusdesign.com](#)
- **[KL](#)** [Waterproof splitter - 42703 | Klusdesign.com](#)