

KLOCK Werks KWM-INSERT-IO-KW-UNIVERSAL iOmounts Universal Phone Mount Instruction Manual

[Home](#) » [KLOCK Werks](#) » KLOCK Werks KWM-INSERT-IO-KW-UNIVERSAL iOmounts Universal Phone Mount Instruction Manual 

Contents

- 1 KLOCK Werks KWM-INSERT-IO-KW-UNIVERSAL iOmounts Universal Phone Mount
- 2 Product Usage Instructions:
- 3 iOmounts™ COMPONENTS
- 4 INSTALLATION
- 5 INSTALL
- 6 A FEW TIPS AND TRICKS...
- 7 Documents / Resources
 - 7.1 References
- 8 Related Posts



KLOCK Werks KWM-INSERT-IO-KW-UNIVERSAL iOmounts Universal Phone Mount



Specifications:

- **Product Name:** Universal Phone Mount
- Mounts to most flat surfaces
- **Components:** iOdisc™, iOcore™, Device Tether
- iOcore™ available in multiple colors

Product Usage Instructions:

Installation:

1. Adhesive Install:

1. Choose a flat location to mount the 1 3/4 backing plate
2. Clean the surface with provided alcohol wipe
3. Insert square-head bolt into the backing plate
4. Tighten sphere onto the square-head bolt threads
5. Install VHB adhesive patch to back of plate
6. Remove adhesive backing and install assembled iOmount onto your previously chosen location

2. Bolton Install:

1. Choose any desired mounting surface with a 1 7/8 diameter to fully support base of Semisphere
2. Mark the center of desired mount point and drill a 1/4 hole to accommodate the supplied fastener
3. Apply red thread locking agent to bolt threads and torque Semisphere to 120-150 in-lbs

Attaching Devices:

Once the iOdisc™ has cured for 24 hours, proceed to attach your device using the provided instructions and tether for added security.

Tips and Tricks:

- Avoid using full-size tablets on specific mounts
- Ensure surface compatibility for adhesive attachment
- Use a smooth plastic, non-silicone case for best results
- iOdisc™ adhesive is permanent and difficult to remove
- Follow state laws regarding device use while driving

FAQ:

Questions?

If you have any further inquiries, feel free to reach out through the following channels:

- Website: GetKlocked.com
- Email: info@getklocked.com
- Phone: [605-996-3700](tel:605-996-3700)

Connect to even more...

Explore stands, wall mounts, car mounts, and more at GetKlocked.com.
Remember, sharing is caring! Like, tag, or share using #GETKLOCKED.

welcome to mounts®

UNIVERSAL PHONE MOUNT MOUNTS TO MOST FL AT SURFACES

SCAN HERE



Learn how to adhere the iOdisc™ correctly to guarantee a wonderful experience.
GETKLOCKED.COM/HOWTO

iOmounts™ COMPONENTS



iOdisc™

KEEP EXTRAS ON HAND!

Once an iOdisc™ is adhered to a device, it can readily use the iOmounts system.



iOcore™

CUSTOMIZE YOUR LOOK

The magnetic iOcore™ (the powerhouse in this system) is available in multiple colors.

DEVICE TETHER

The Device Tether can be used with almost any smartphone to give an added sense of security and piece of mind when using or mounting your smart device.

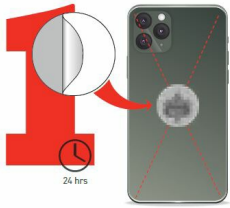


- Place tether table tether tab through charging port.
- Snap phone back in place in ye in your case.
- Attach lanyard to tether tab and GO!

INSTALLATION



When adhering the iOdisc™ allow adhesive to set at least 24 hours before attaching to iOcore. For best results, let set 72 hours before first use.



ADHERE

Clean the surface of your device case and allow to dry. Center the iOdisc™ on your case then apply with firm pressure to the case while on a flat surface and adhere.

INSTALL



ADHESIVE INSTALL

1. Choose a flat location to mount the 1 3/4" backing plate
2. Clean the surface with provided alcohol wipe
3. Insert square-head bolt into the backing plate
4. Tighten sphere onto the square-head bolt threads
5. Install VHB adhesive patch to back of plate
6. Remove adhesive backing and install assembled iOmount onto your previously chosen location

BOLT-ON INSTALL

1. Choose any desired mounting surface with a 1 7/8" diameter to fully support base of Semisphere.
2. Mark the center of desired mount point and drill a 1/4" hole to accommodate the supplied fastener.
3. Apply red thread locking agent to bolt threads and torque Semisphere to 120- 150 in-lbs.



ATTACH

Once the iOdisc™ has cured for 24 hours, your device is ready to be attached to any iOmount®!

A FEW TIPS AND TRICKS...

- We do not recommend using full-size tablets or other larger devices on model-specific, nomad™, nomadXL™, or nomad+™ mounts.
- While a very strong 3M VHB adhesive is used, the iOdisc™ will not stick to all surfaces and materials. This includes rubber, silicone, soft-touch and other soft and/or textured surfaces.
- For best results, Klock Werks recommends the use of a smooth plastic, non-silicone case.
- Each iOdisc™ utilizes permanent adhesive and is very difficult to remove once applied. Klock Werks and/or iOmounts™ are not responsible for any damages caused by the removal of the iOdisc™.

WARNING: When riding or driving, please follow your state laws regarding device use.

QUESTIONS?

DON'T HESITATE TO REACH OUT

WEBSITE

GetKlocked.com

EMAIL

info@getklocked.com

CALL

[605-996-3700](tel:605-996-3700)




- CONNECT TO EVEN MORE...
- Connect to stands, wall mounts, car mounts and more.
- Find it all at: [GETKLOCKED.COM](https://www.getklocked.com)

SHARING IS CARING! LIKE, TAG OR SHARE.



#GETKLOCKED

Documents / Resources

 <p>welcome to iOmounts</p> <p><small>UNIVERSAL PHONE MOUNT MOUNTS TO MOST FLAT SURFACES</small></p>	<p>KLOCK Werks KWM-INSERT-IO-KW-UNIVERSAL iOmounts Universal Phone Mount [pdf] nstruction Manual</p> <p>KWM-INSERT-IO-KW-UNIVERSAL, KWM-INSERT-IO-KW-UNIVERSAL iOmounts Universal P hone Mount, iOmounts Universal Phone Mount, Universal Phone Mount, Phone Mount, Mount</p>
---	---

References

-  [Klock Werks](#)
- [User Manual](#)

Manuals+. Privacy Policy

This website is an independent publication and is neither affiliated with nor endorsed by any of the trademark owners. The "Bluetooth®" word mark and logos are registered trademarks owned by Bluetooth SIG, Inc. The "Wi-Fi®" word mark and logos are registered trademarks owned by the Wi-Fi Alliance. Any use of these marks on this website does not imply any affiliation with or endorsement.