

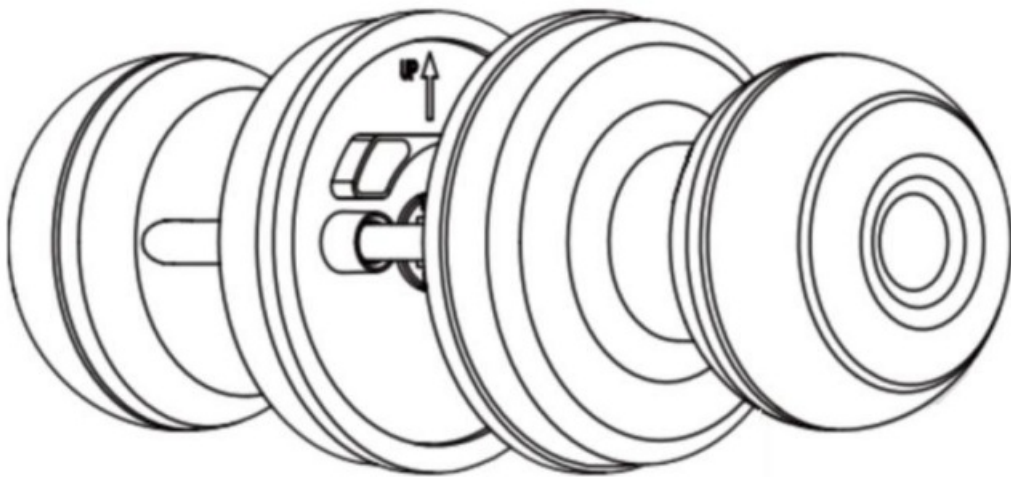


KLLOQUE K01 Knob Lock with Fingerprint Installation Guide

[Home](#) » [KLLOQUE](#) » KLLOQUE K01 Knob Lock with Fingerprint Installation Guide 



Knob Lock with Fingerprint
Model No.: K01
Installation & Operation Guide



Contents

- 1 Components list
- 2 Installation Guide
- 3 Operation Guide
- 4 Documents / Resources
 - 4.1 References

Components list

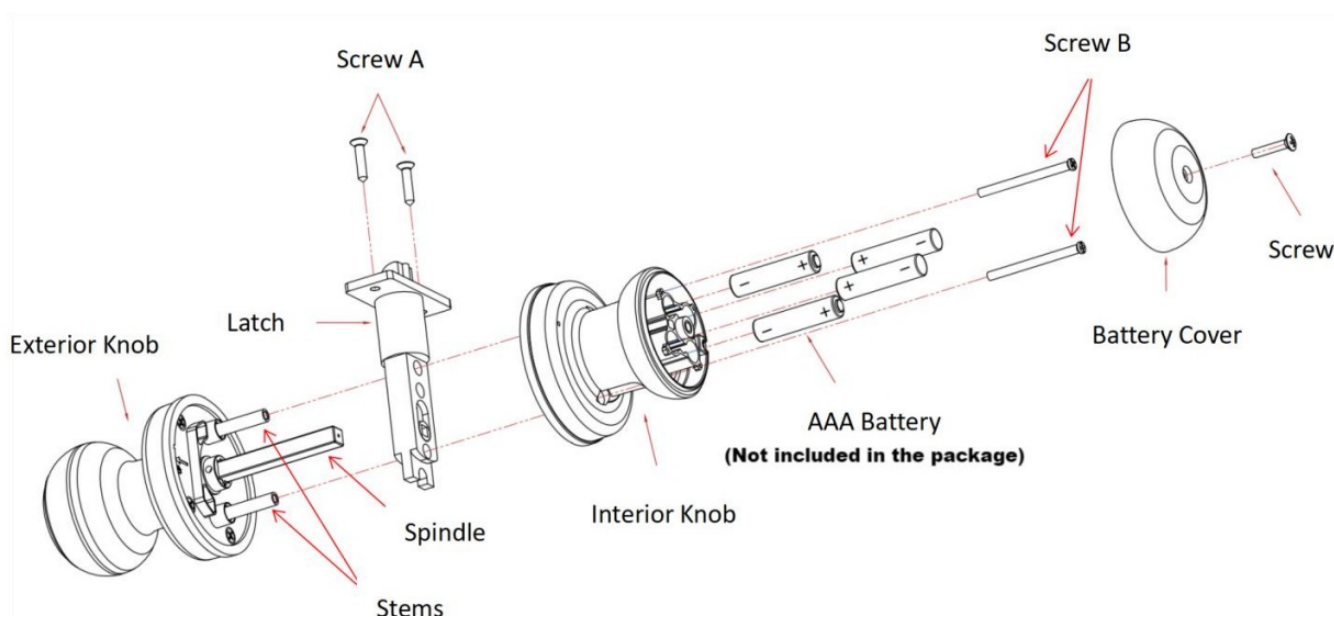
No.	Components	Quantity	No.	Components	Quantity
1	Exterior Knob	1	5	Striker Plate	1
2	Interior Knob	1	6	Striker Box	1
3	Latch	1	7	Screw A	4
4	Key	2	8	Screw B	2

Please check the above components carefully to make sure all items have been received. If any items are missing, please contact the online Customer Service.
Please read this manual carefully before installing and operating!

Tools Required

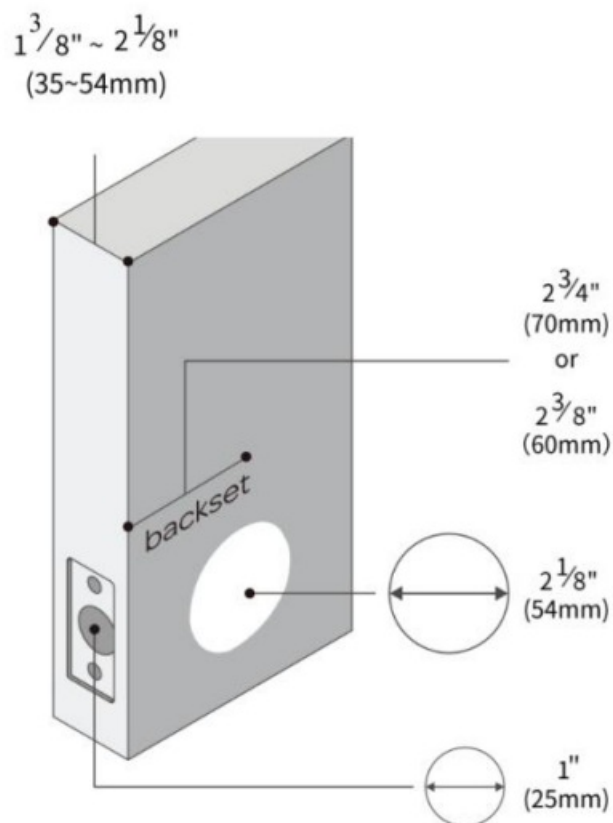
1. Phillips screwdriver
2. Tape measure

Installation Guide



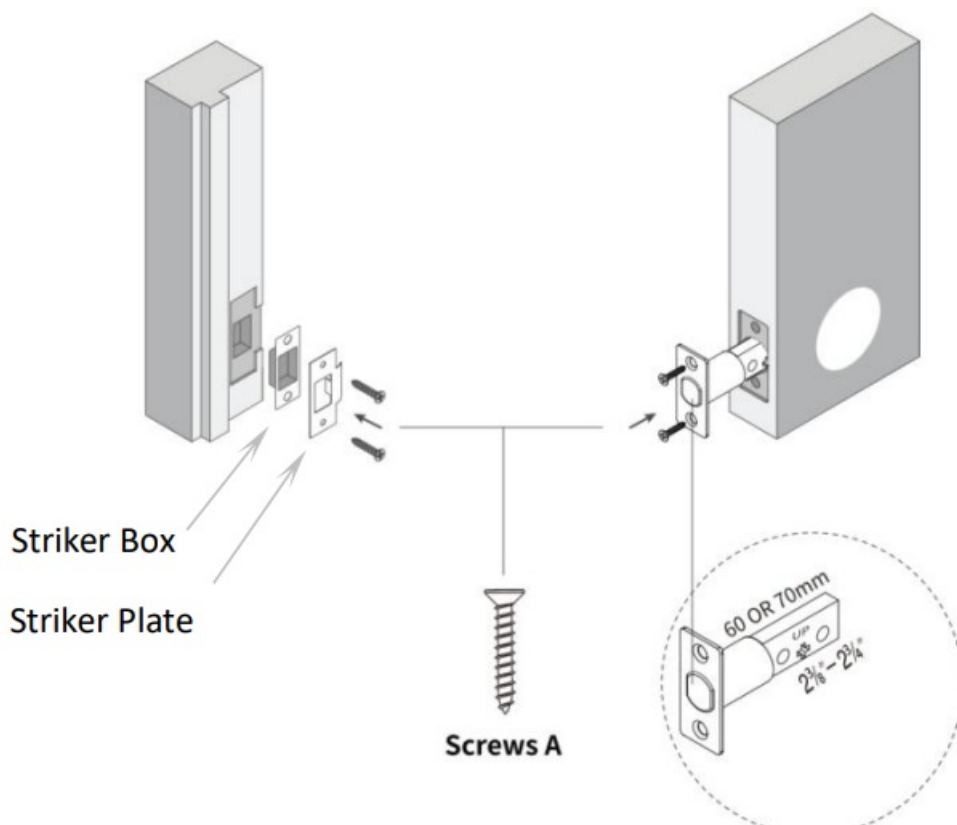
1. Check The Door's Dimension

- 1 Measure to confirm the thickness of the door is between 1-3/8" and 2-1/8" (35~54mm).
- 2 Measure to confirm the diameter of the hole in the door is 2-1/8" (54mm).
- 3 Measure to confirm the backset (as shown below) is either 2-3/8" (60mm) or 2-3/4"(70mm).
- 4 Measure to confirm the diameter of the hole in the door edge is 1" (25mm).



2. Install Latch and Strike

- 1 Set the Latch backset to 60mm(2-3/8") or 70mm(2-3/4") to fit your door hole.
- 2 Insert the Latch into the door hole, and tighten Screw A to fix the Latch. Install Striker Box and Striker Plate also with Screw A into the door frame.



3. Install Exterior Knob & Interior Knob

1 Install Exterior Knob (the lock body with Spindle and two Stems) from outside of your door and make sure the Spindle and Stems go through the three holes of the Latch.

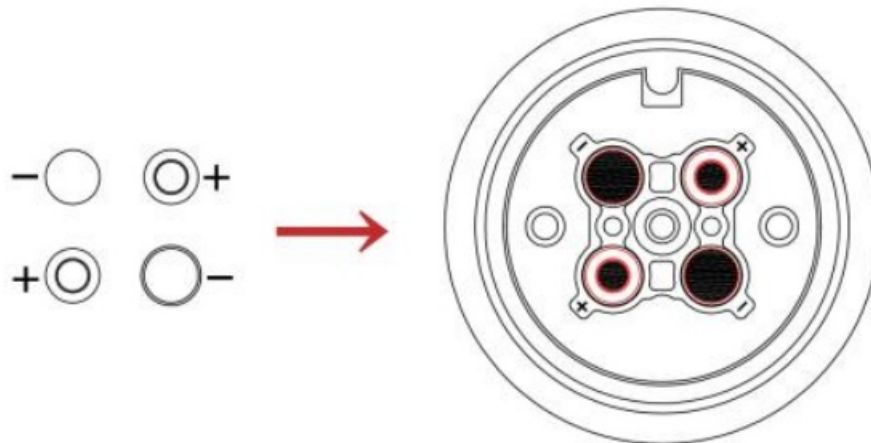
2 Insert Interior Knob by aligning the two stems with the screw holes, connect the wire by inserting the connector into the socket, and tighten Screw B.

4. Install Batteries (NOT included in the package)

1 Loosen the the screw to remove the battery cover in the Interior Knob.

2 Install 4 AAA batteries and tighten the screw to fix the battery cover.

PLEASE DO NOT USE LITHIUM BATTERIES OR RECHARGABLE BATTERIES.

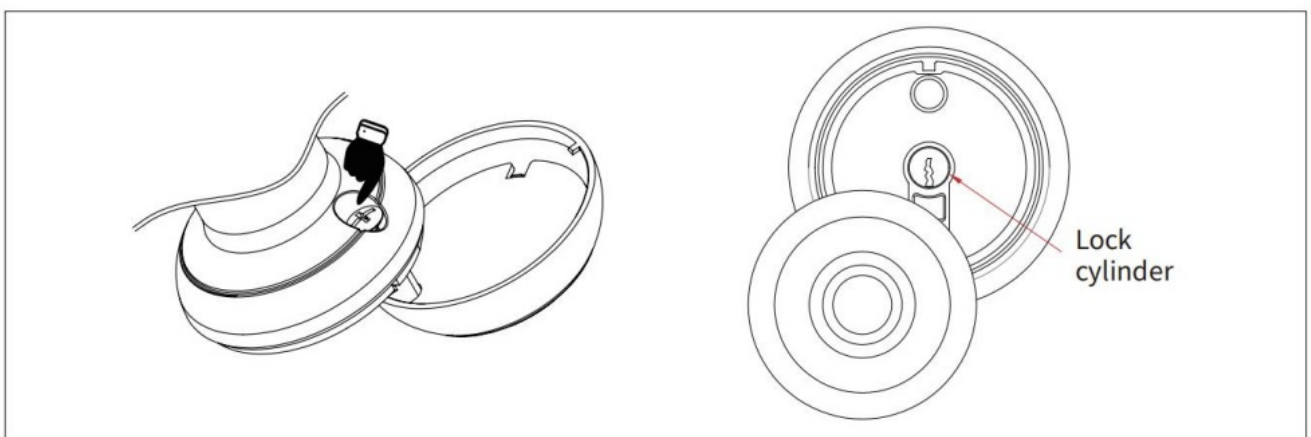


Operation Guide

1. Key to unlock

Pull out the fingerprint head cover directly. Or press the screw in the back of the Exterior Knob, and the fingerprint head cover will be pushed out a bit so that you can pull it out more easily.

Insert the key and turn the key 90° to unlock, then turn the Exterior Knob to open the door.



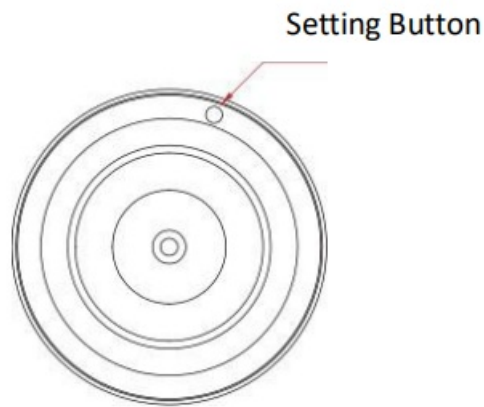
2. Fingerprint to unlock

Please follow the APP Operation Guide to finish your fingerprint setup, and touch the fingerprint sensor to open the door.

3. Mode switch

Passage mode: The lock will stay unlock for convenient passage.

Press the Setting Button in the Interior Knob once, and touch the fingerprint sensor with your registered fingerprint to enable or disable passage mode.



4. Low power indication

If the fingerprint head flashes green and then flashes red after being unlocked by fingerprint or APP successfully, it indicates it is time to install new batteries.

5. 5V emergency power

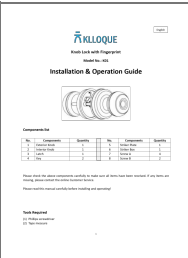
Use a 5V power bank to activate the lock by connecting the Type-C port on the bottom of the Exterior Knob in case of an emergency with a dead battery.

6. Restore factory settings

Press the Setting Button in the Interior Knob for 8 seconds, the buzzer will beep once and the fingerprint head will flash green. The lock will be reset to factory settings.



Documents / Resources

	<p>KLLOQUE K01 Knob Lock with Fingerprint [pdf] Installation Guide</p> <p>K01 Knob Lock with Fingerprint, K01, Knob Lock with Fingerprint, Lock with Fingerprint, Fingerprint</p>
---	---

References

- [User Manual](#)