



KlipXtreme Multi-Port Compact Card Reader User Manual

[Home](#) » [KlipXtreme](#) » KlipXtreme Multi-Port Compact Card Reader User Manual 



**Multi-port
compact card reader**

KCR-210

CAUTION

Please read this manual thoroughly prior to installing and using this product.

Federal Communications Commission (FCC) Notice

This device complies with Part 15 of the FCC rules. Operation is subject to the following two conditions:

1. This device may not cause harmful interference, and
2. This device must accept any interference received, including interference that may cause undesired operation.

This equipment has been tested and found to comply with the limits of a Class B digital device, pursuant to Part 15 of the FCC Rules. These limits are designed to provide reasonable protection against harmful interference in a residential installation. This

equipment generates, uses, and can radiate radio frequency energy and, if not installed and used in accordance with the instructions, may cause harmful interference to radio communications. However, there is no guarantee that interference will not occur in particular installations. If this equipment does cause harmful interference to radio or television reception, which can be determined by turning the equipment off and on, the user is encouraged to try to correct the interference by one or more of the following measures:

1. Reorient / Relocate the receiving antenna.
2. Increase the distance between the mouse and receiver.
3. Connect the equipment into an outlet on a circuit different from that the receiver is connected.
4. Consult the dealer or an experienced radio /TV technician for help

FCC Caution: Any changes or modifications not expressly approved by the party responsible for compliance could void the user's authority to operate this equipment.

Contents

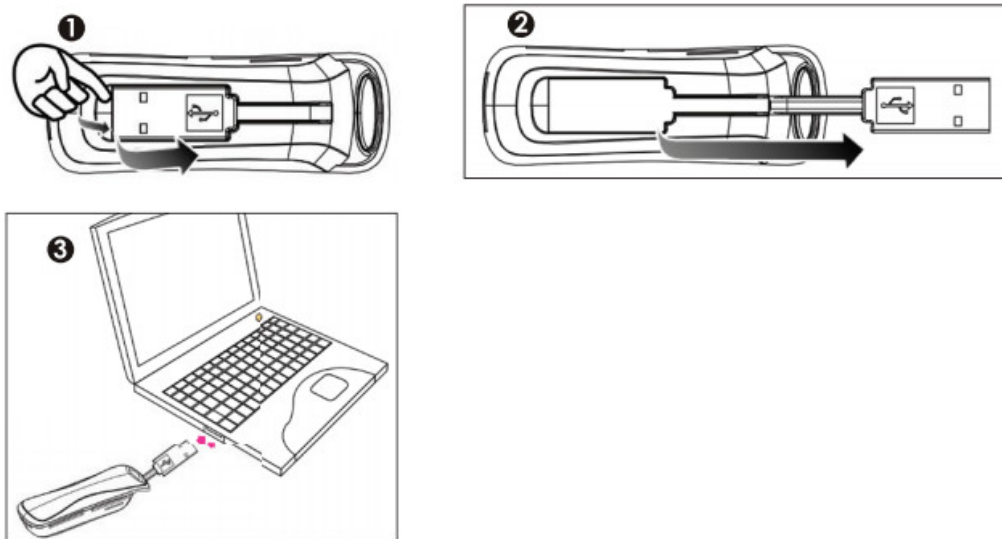
- [1 Introduction](#)
- [2 Connection to your computer](#)
- [3 How to use your Card Reader](#)
- [4 Documents / Resources](#)
 - [4.1 References](#)
- [5 Related Posts](#)

Introduction

Thank you for choosing the KCR-210, Multicard Reader/Writer. This multi-port card reader offers true plug-and-play capability with USB technology. This hot swappable-friendly device is fully compliant with USB 1.1 & 2.0 specifications, thus being able to support virtually any type of memory card available in the market. The multi-port Card Reader/Writer is the perfect solution for high-speed, bi-directional image and data file transfer between your computer and multimedia devices.

Connection to your computer

Use the supplied USB cable to connect your card reader to your computer.



How to use your Card Reader

The multi-card reader provides four slots for the most popular card formats. Insert your cards in the right slot according to the description included below.

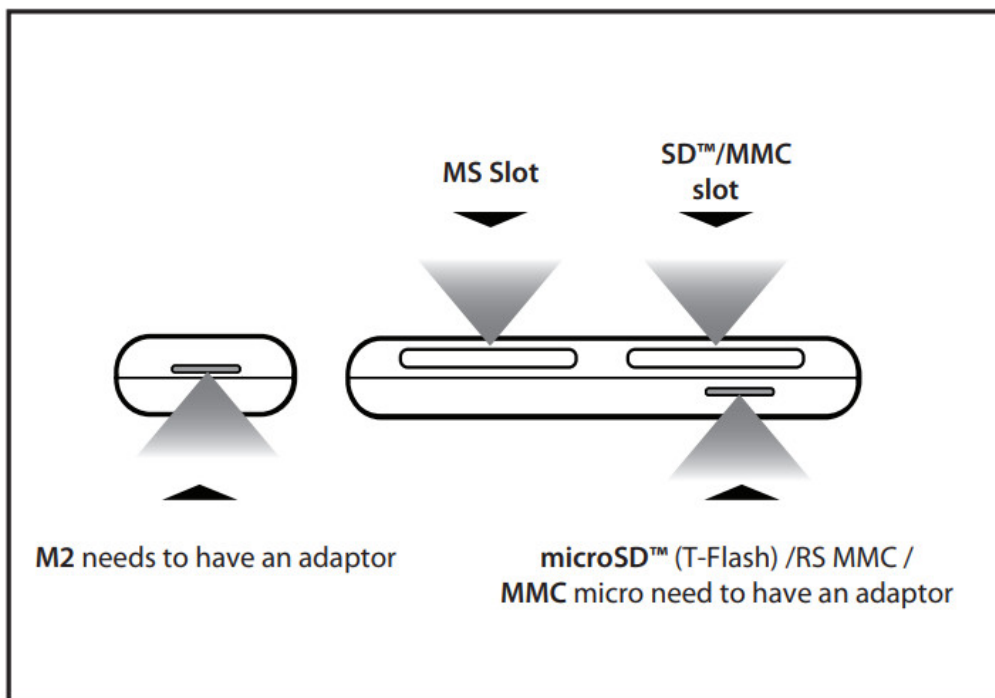
Card Slot Description

1. **MS Slot:** supports Memory Stick Pro, Duo, Pro Duo, M2*.
2. **SD™/MMC Slot:** supports SD™, miniSD™ card, MMC, miniSD™ HC, microSD™ (T-Flash), RS MMC* and MMC micro*
3. **M2 Slot:** supports genuine SD™ memory stick micro M2.
4. **CF Slot:** supports compact flash card, microSD™ (T-Flash). *Requires the use of an adaptor.

Warning: Insert the memory card carefully in the right direction. Please do not attempt to force cards into the slot. This may damage the device or the card, leading to the corruption or loss of your valuable data

Important:

- For preventing any damage or data loss, do not remove the memory card or disconnect this card reader while data is being transmitted.
- To safely remove your card reader and memory card, please follow the standard Windows USB unplug procedure.
- In case of any operating error as a result of the malfunctioning of the card reader, please unplug it and re-plug again; this will reset the device in order to resume the normal operation of the device.





Notes



KlipXtreme® is a registered trademark. All rights reserved. SD™, microSD™ and miniSD™ are trademarks owned by SD-3C, LLC. All other brand names and trademarks are the property of their respective owners. Any mention of such is only intended for identification purposes, and therefore shall not be construed as a claim to any or all rights pertaining to those brands. Made in China.

www.klipXtreme.com

Documents / Resources

  Multi-port compact card reader	Klip Xtreme Multi-Port Compact Card Reader [pdf] User Manual Klip Xtreme, KCR-210, Card Reader
---	---

References

- [🔗 Home - Klip Xtreme](#)