

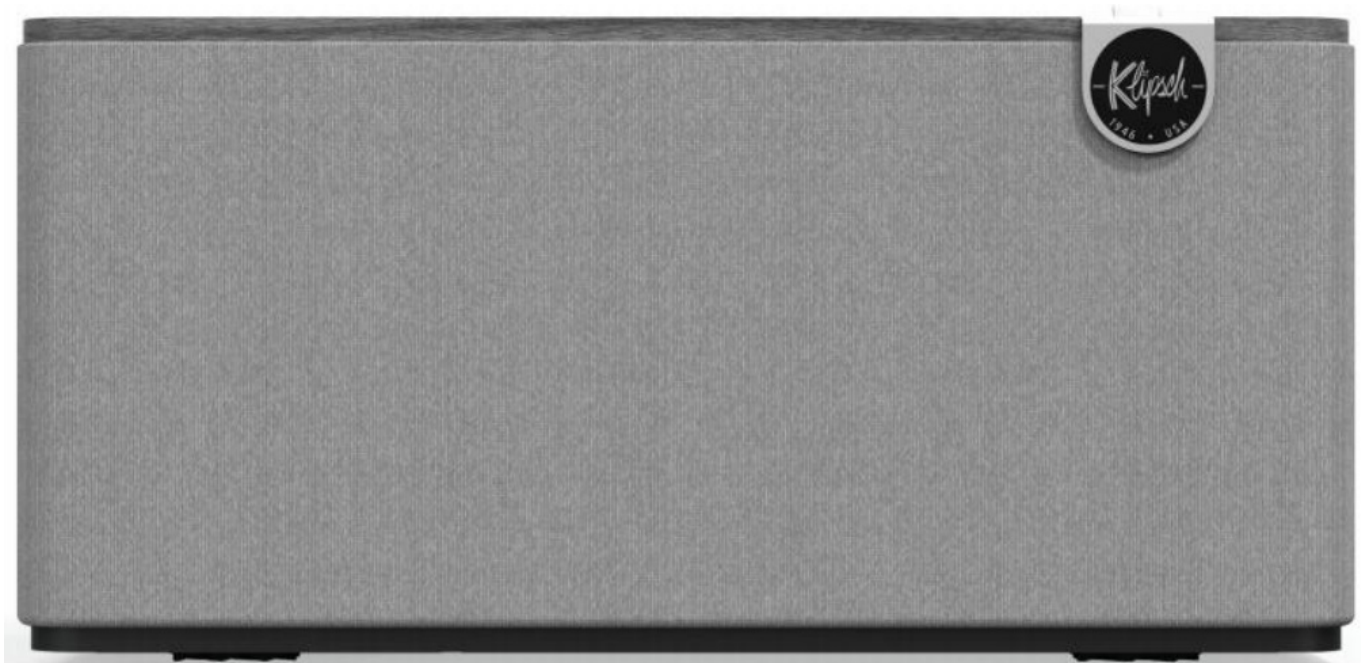


Klipsch The Three Plus Wireless Powered Speaker User Guide

[Home](#) » [Klipsch](#) » Klipsch The Three Plus Wireless Powered Speaker User Guide 

Klipsch®

The Three Plus

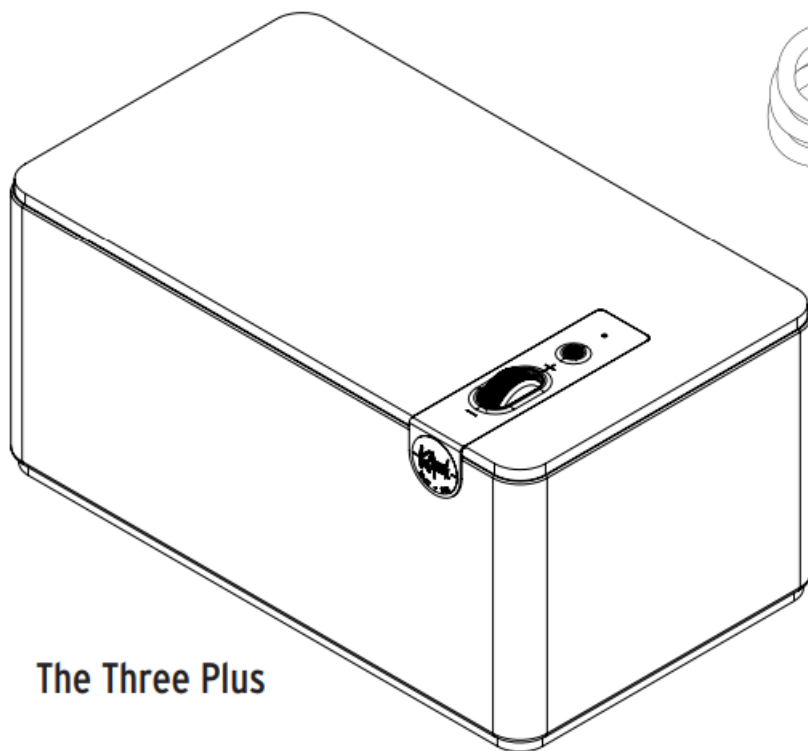


MODEL: The Three Plus
User Guide

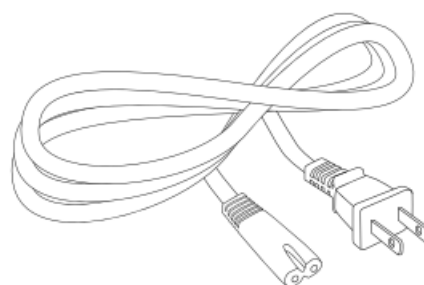
Contents

- 1 [INSIDE](#)
- 2 [SETUP](#)
- 3 [CONTROLS](#)
- 4 [POWER AND SOURCE INDICATOR](#)
- 5 [CONNECTIONS – BLUETOOTH®](#)
- 6 [CONNECTIONS – ANALOG RCA](#)
- 7 [CONNECTIONS – TURNTABLE – INPUT](#)
- 8 [CONNECTIONS – USB-C](#)
- 9 [BROADCAST MODE PAIRING](#)
- 10 [FACTORY RESET](#)
- 11 [CARE AND CLEANING](#)
- 12 [Documents / Resources](#)
 - 12.1 [References](#)
- 13 [Related Posts](#)

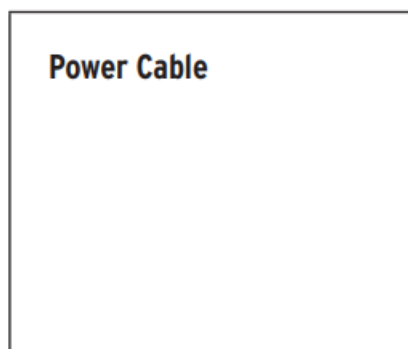
INSIDE



The Three Plus

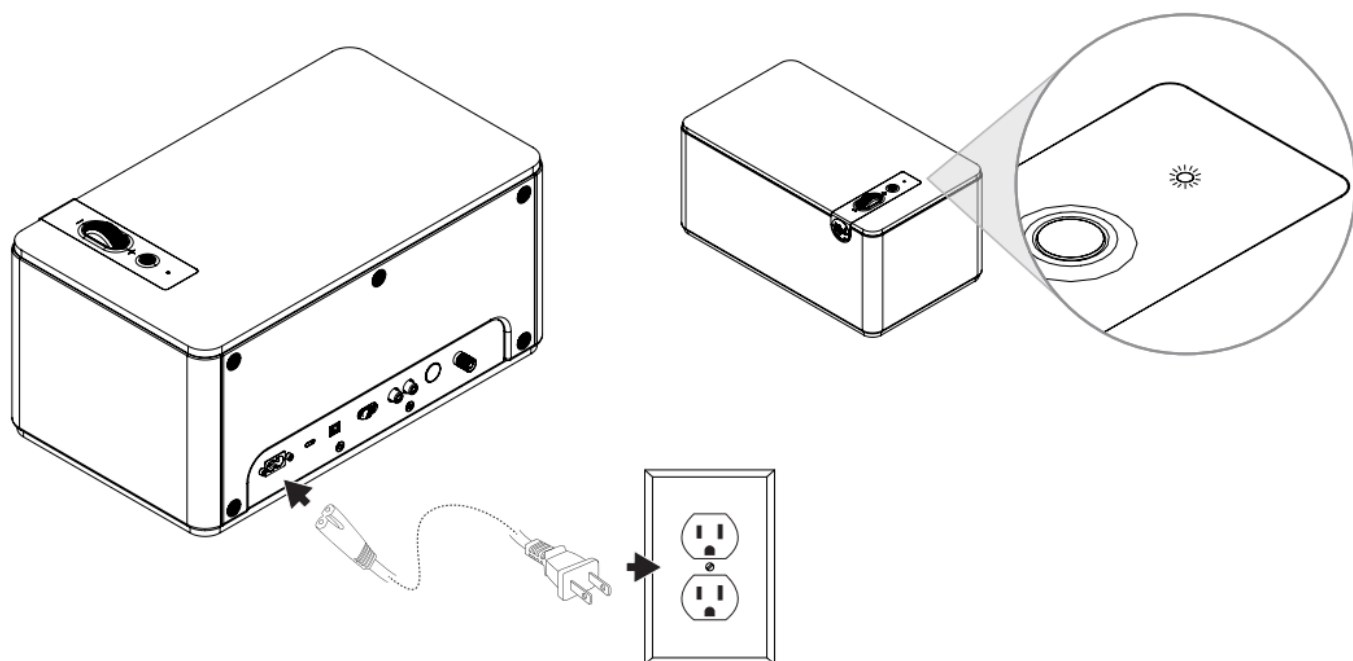


Power Cable

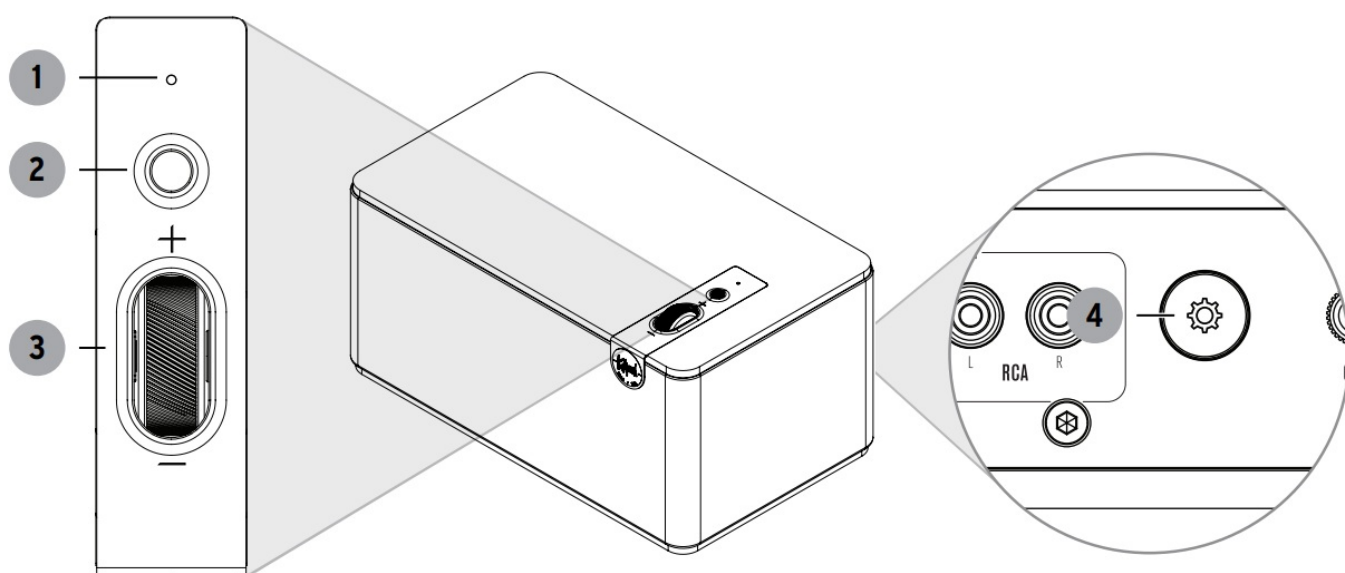


Power Cable

SETUP

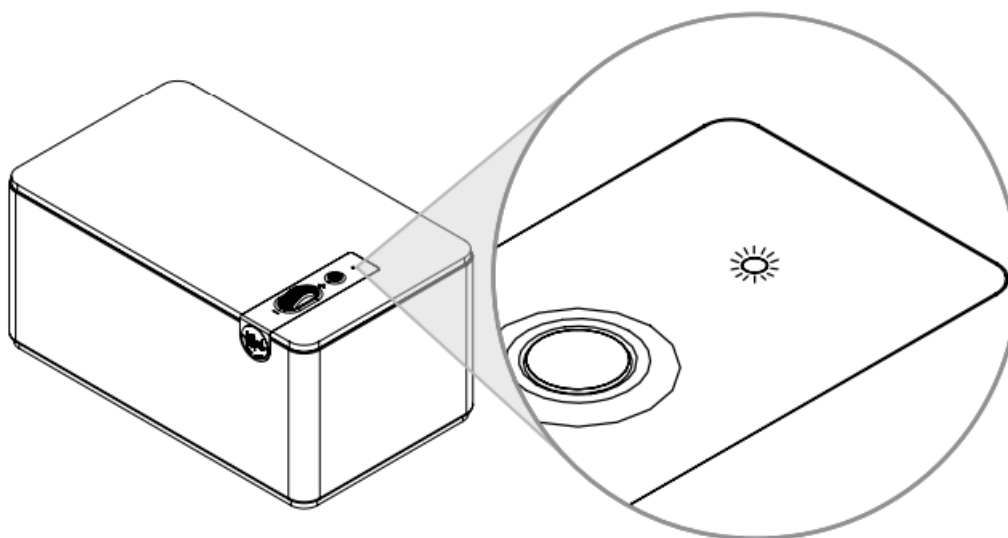


CONTROLS



1	Power/Source Indicator	2	Multifunction Button	3	Volume Dial	4	Utility Button

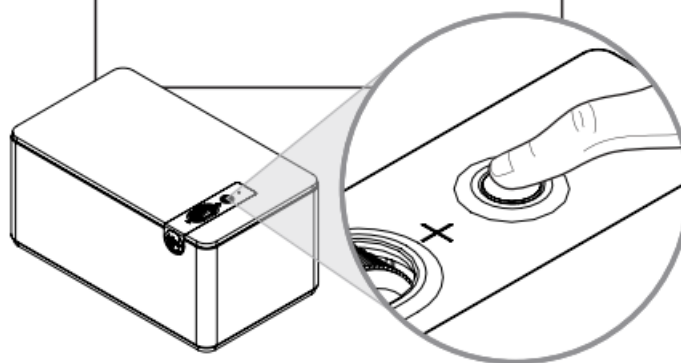
POWER AND SOURCE INDICATOR



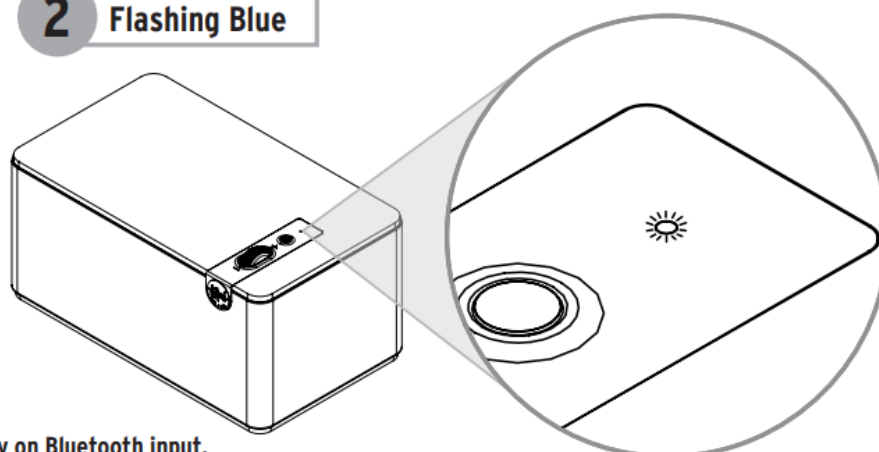
BLUE = Bluetooth® Input
RED = Optical Input
WHITE = USB-C Device
YELLOW = USB-C Thumb
PINK – Phono/Line Input

CONNECTIONS – BLUETOOTH®

1 Hold 3 Seconds*

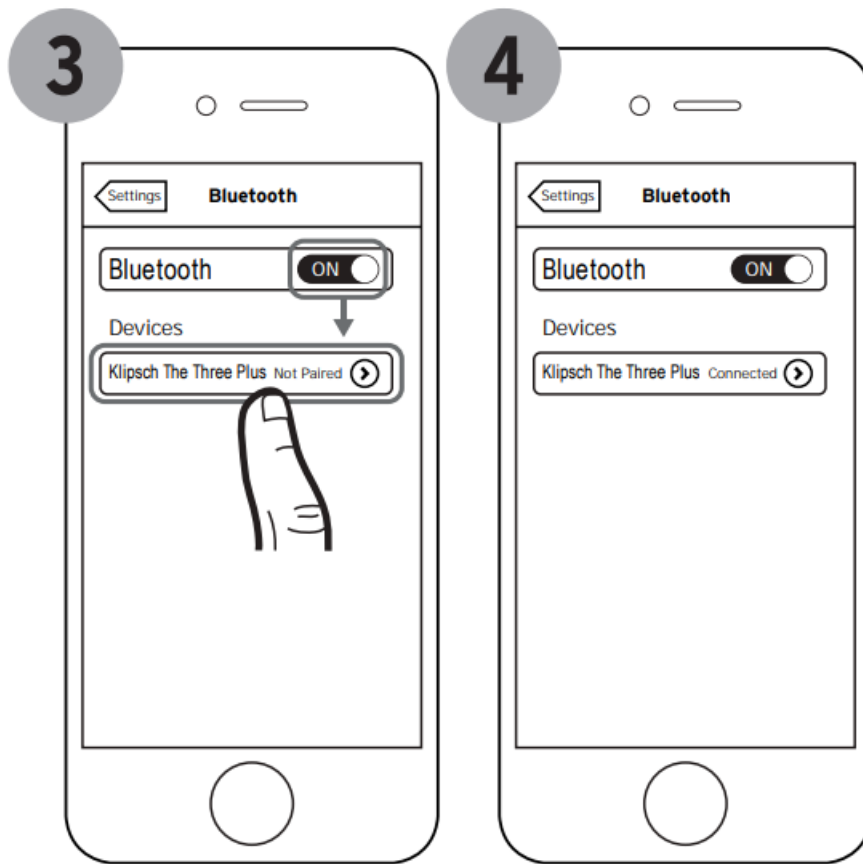


2 Flashing Blue

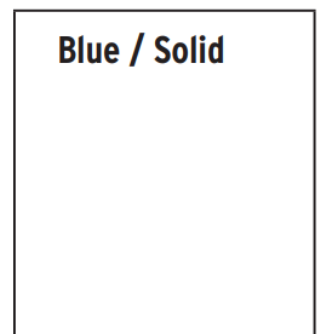
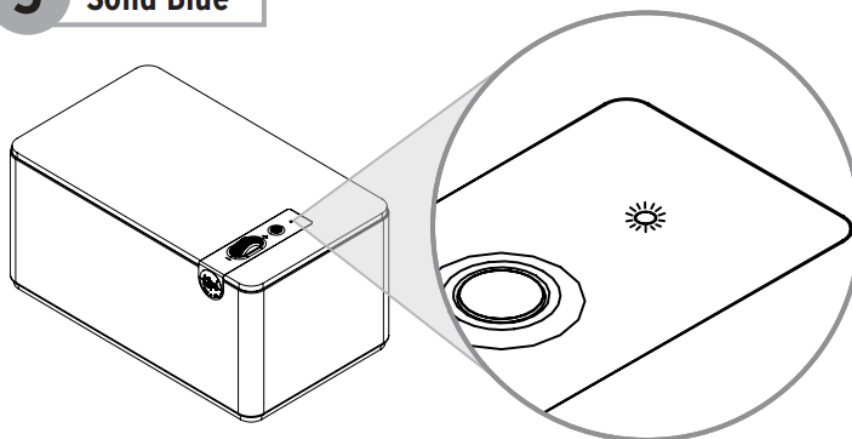


Blue / Flashing

***Only on Bluetooth input.**

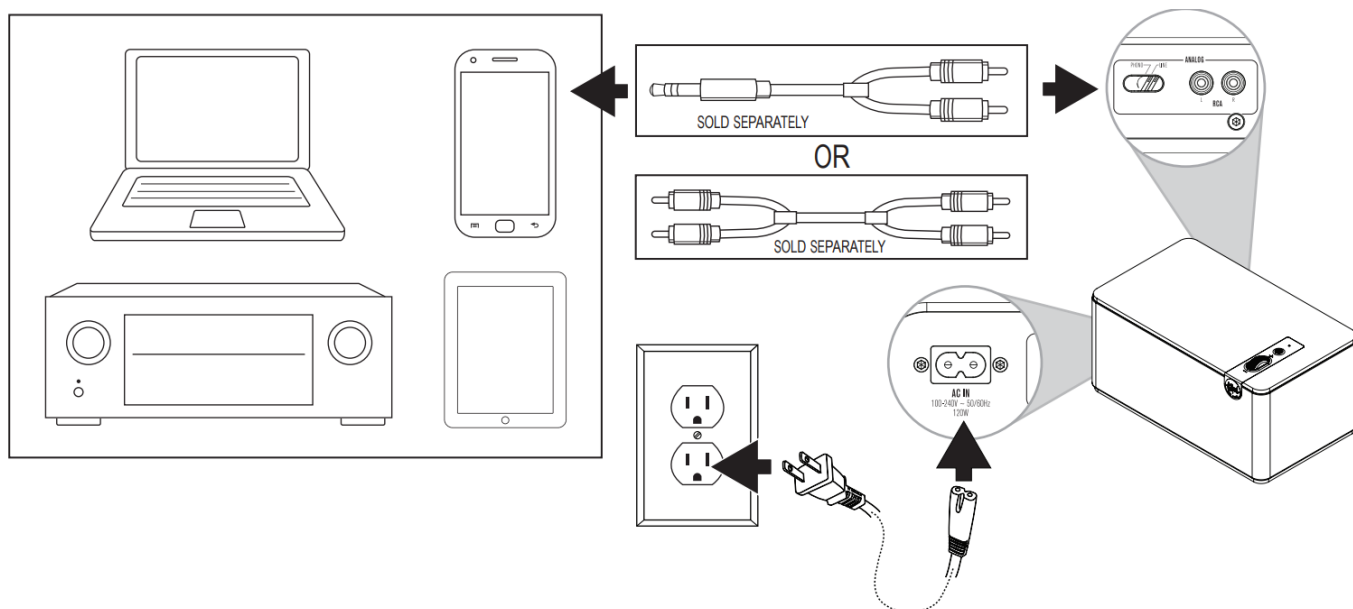


5 Solid Blue

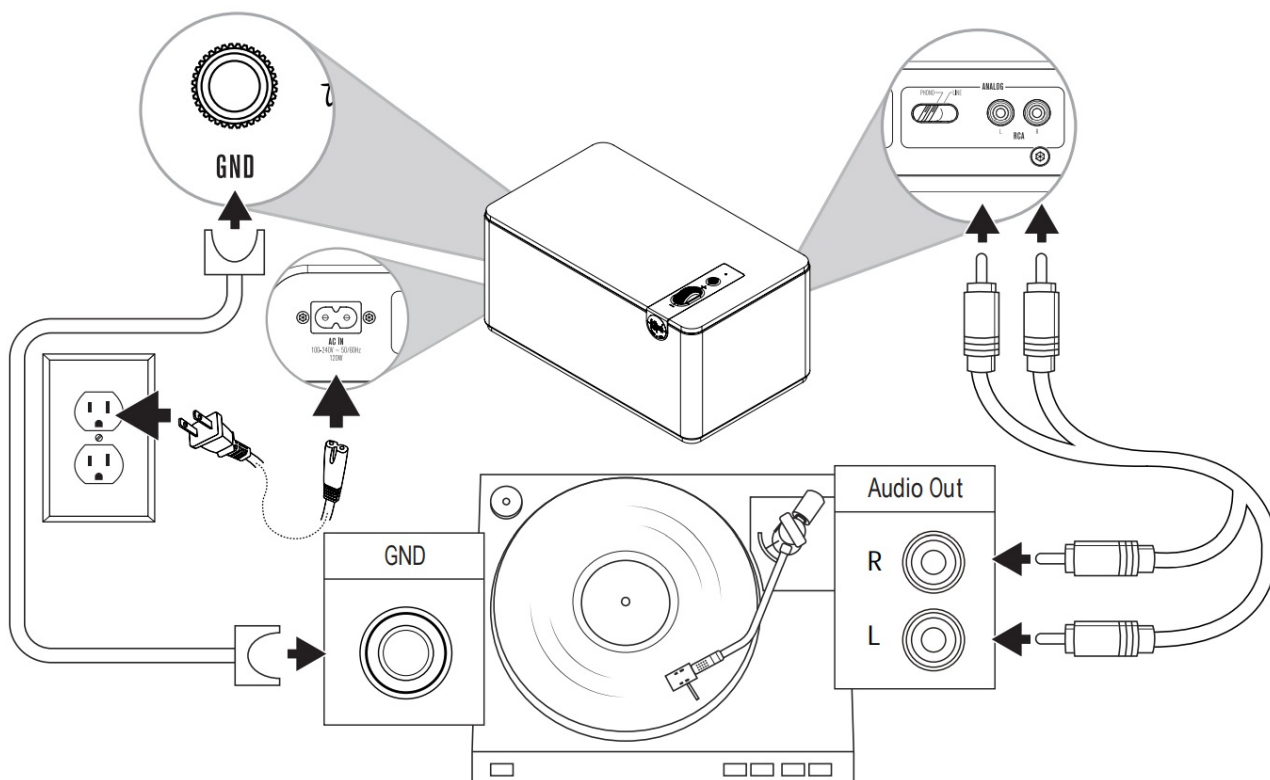


Example only. Your device may differ.

CONNECTIONS – ANALOG RCA



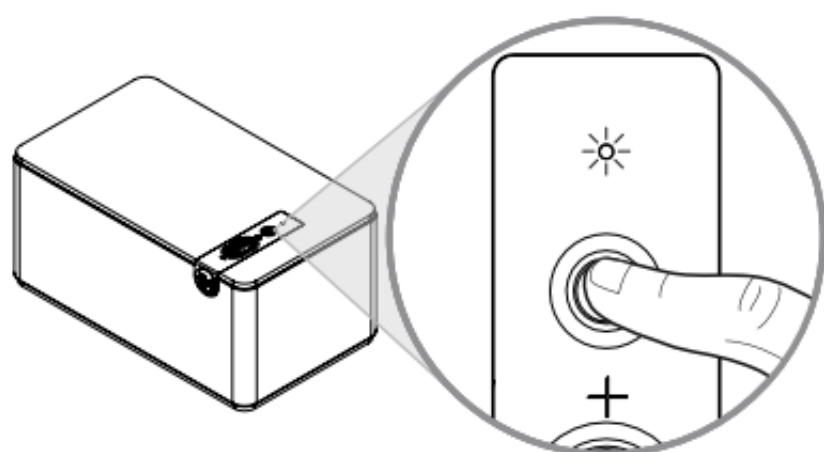
CONNECTIONS – TURNTABLE – INPUT

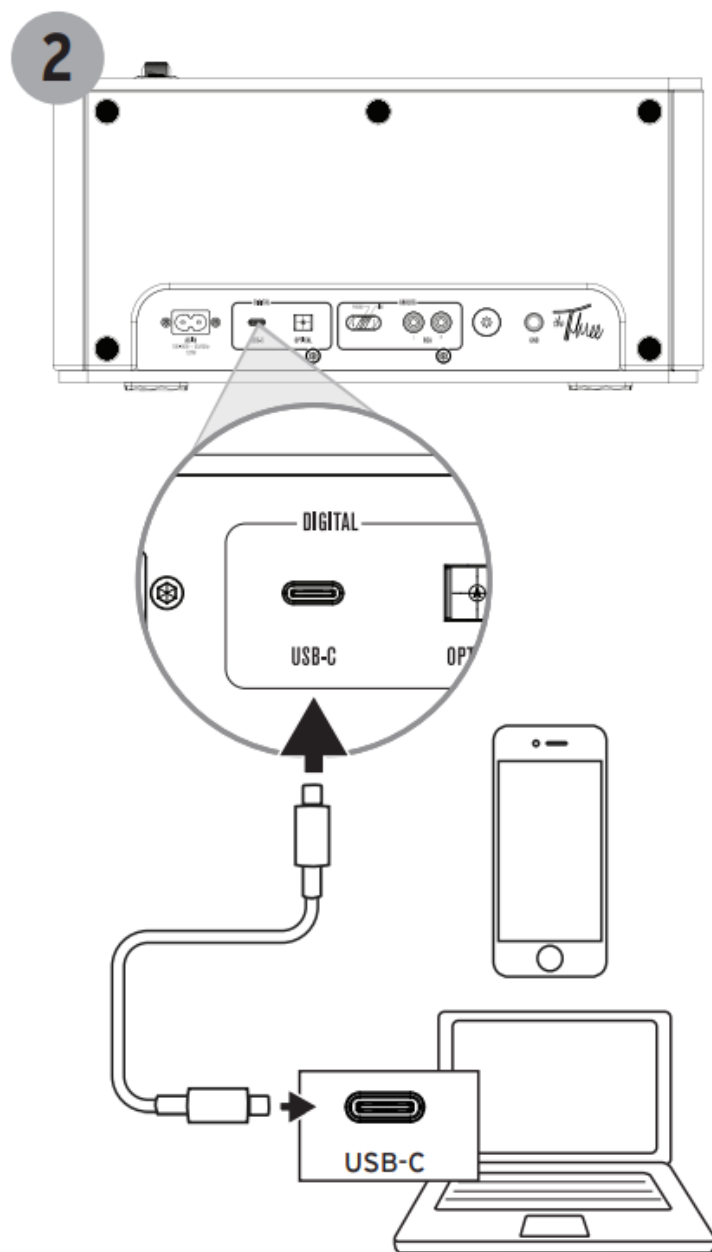


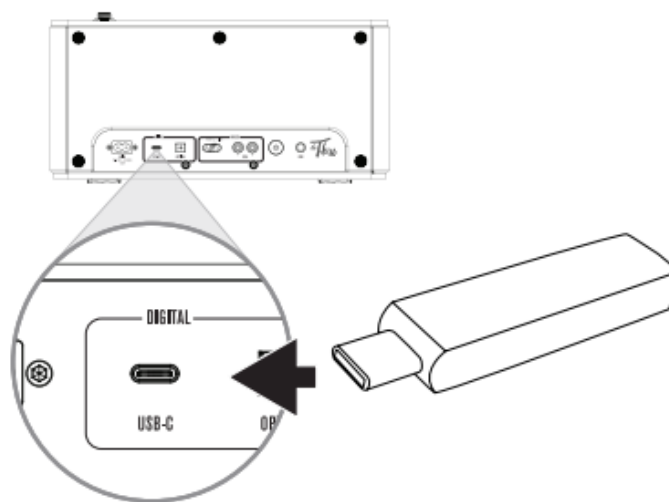
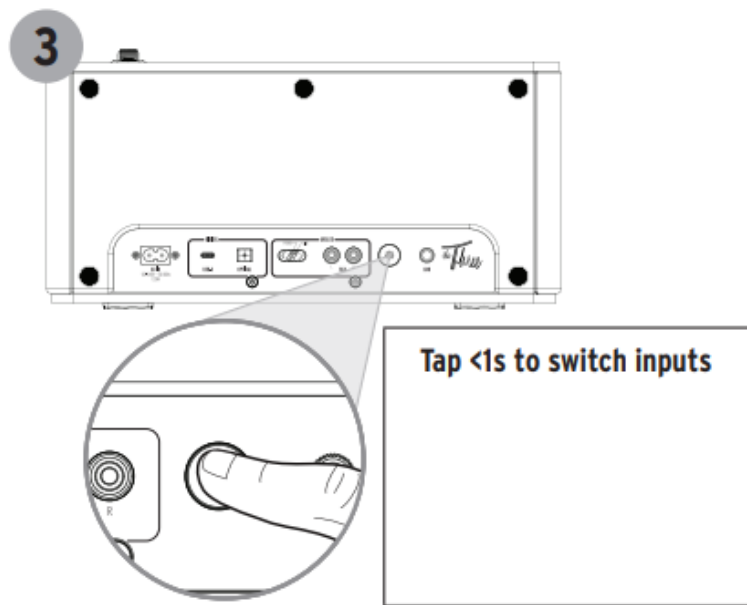
CONNECTIONS – USB-C

1

Tap <1s until White



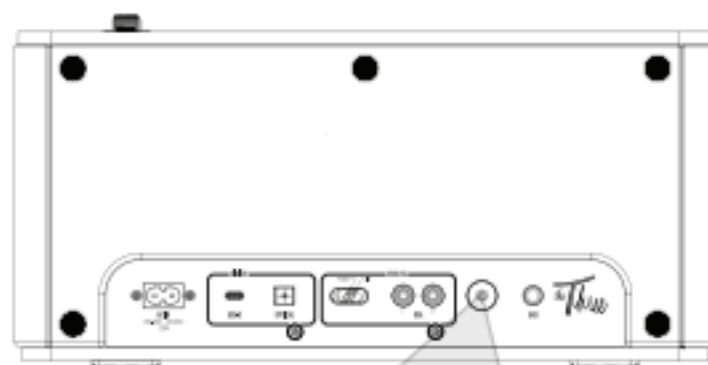




BROADCAST MODE PAIRING

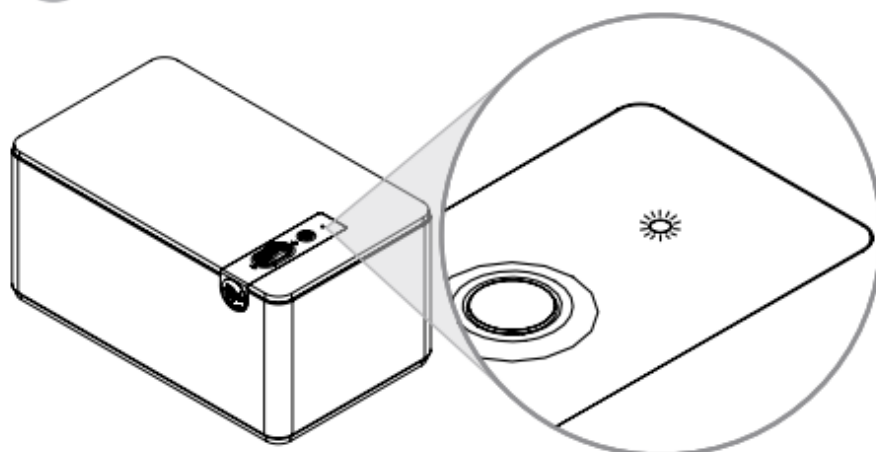
1

Tap utility button twice*



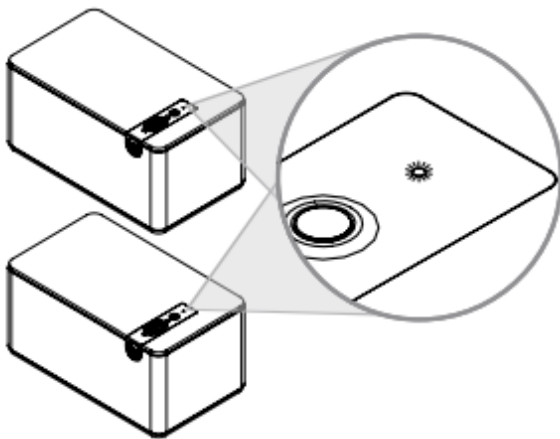
2

Flashing Blue/White



Flashing Blue/White

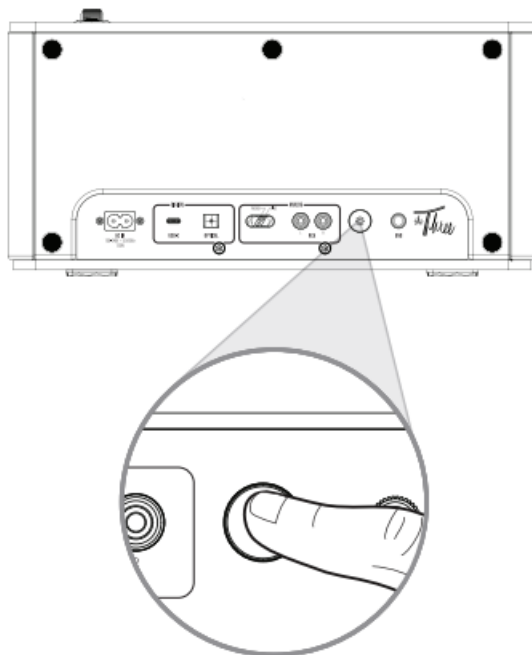
3 Flashing Blue x3



Flashing Blue x3

*Only on Bluetooth input.

FACTORY RESET



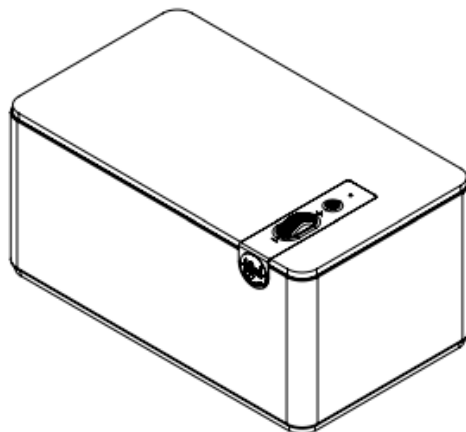
1

Hold 5 Seconds

NOTE Factory Reset will clear the Bluetooth® pairing history

2

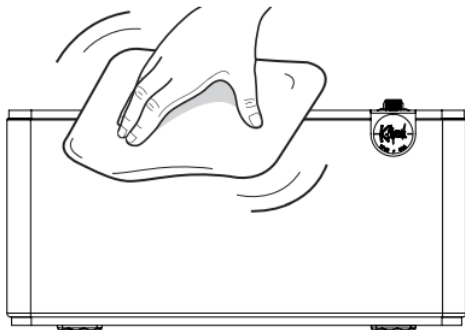
"FACTORY RESET"



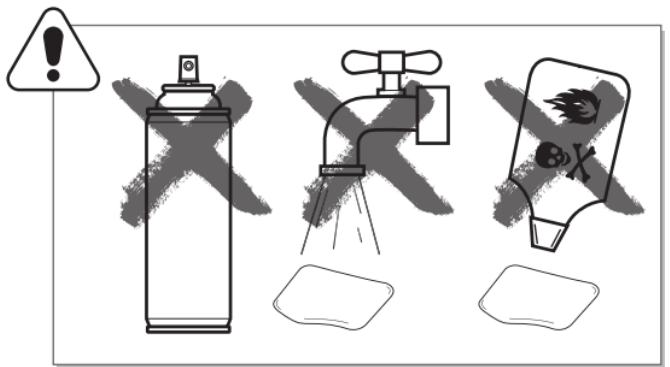


Download the Klipsch Connect smartphone app to access features including: the virtual remote, EQ, Night Mode, product updates, and support.

CARE AND CLEANING




*** USE MICROFIBER CLOTHS ONLY**





IMPORTANT SAFETY INSTRUCTIONS!

1. READ these instructions.
2. KEEP these instructions.
3. HEED all warnings.
4. FOLLOW all instructions.
5. DO NOT use this apparatus near water.
6. CLEAN ONLY with dry cloth.
7. DO NOT block any ventilation openings. Install in accordance with the manufacturer's instructions.
8. DO NOT install near any heat sources such as radiators, heat registers, stoves, or other apparatus (including amplifiers) that produce heat.
9. DO NOT defeat the safety purpose of the polarized or grounding type plug.

A polarized plug has two blades with one wider than the other. A grounding type plug has two blades and a third grounding prong. The wider blade or the third prong are provided for your safety. If the provided plug does not fit into your outlet, consult an electrician for replacement of the obsolete outlet.

10. PROTECT the power cord from being walked on or pinched, particularly at plugs, convenience receptacles, and the point where they exit from the apparatus.
11. ONLY USE attachments/accessories specified by the manufacturer.
12. USE ONLY with the cart,  stand, tripod, bracket, or table specified by the manufacturer, or sold with the apparatus. When a cart is used, use caution when moving the cart/ apparatus combination to avoid injury from tip-over.
13. UNPLUG this apparatus during lightning storms or when unused for long periods of time.
14. REFER all servicing to qualified service personnel. Servicing is required when the apparatus has been damaged in any way, such as power-supply cord or plug is damaged, liquid has been spilled or objects have fallen into the apparatus, the apparatus has been exposed to rain or moisture, does not operate normally, or has been dropped.
15. DO NOT expose this apparatus to dripping or splashing and ensure that no objects filled with liquids, such as vases, are placed on the apparatus.
16. To completely disconnect this apparatus from the AC Mains, disconnect the power supply wall wart from the AC receptacle.
17. The mains plug/appliance coupler is used as a disconnect device, the disconnect device shall remain readily operable.
18. DO NOT overload wall outlets or extension cords beyond their rated capacity as this can cause electric shock or fire.

 The exclamation point, within an equilateral triangle, is intended to alert the user to the presence of important operating and maintenance (servicing) instructions in the literature accompanying the product.

 The lightning flash with arrowhead symbol within an equilateral triangle is intended to alert the user to the presence of uninsulated "dangerous voltage" within the product's enclosure that may be of sufficient magnitude to constitute a risk of electrical shock to persons.

WARNING: To reduce the risk of fire or electrical shock, do not expose this apparatus to rain or moisture.

WARNING: No naked flame sources – such as



candles – should be placed on the product.

WARNING: Do Not Open! Risk of Electrical Shock. Voltages in this equipment are hazardous to life. No user-serviceable parts inside. Refer all servicing to qualified service personnel.

Place the equipment near a main power supply outlet and make sure that you can easily access the power breaker switch.

WARNING: This product is intended to be operated ONLY from the AC Voltages listed on the back panel or included power supply of the product. Operation from other voltages other than those indicated may cause irreversible damage to the product and void the products warranty. The use of AC Plug Adapters is cautioned because it can allow the product to be plugged into voltages in which the product was not designed to operate. If the product is equipped with a detachable power cord, use only the type provided with your product or by your local distributor and/or retailer. If you are unsure of the correct operational voltage, please contact your local distributor and/or retailer.



The use of apparatus is in tropical and/or moderate climates.

EU COMPLIANCE INFORMATION

Eligible to bear the CE mark; Conforms to European Union Low Voltage Directive 2014/35/

EU; European Union EMC Directive 2014/30/

EU; European Union Restriction of Hazardous Substances Recast (RoHS) Directive 2011/65/

EU; European Union WEEE Directive 2012/19/

EU; European Union Eco-Design Directive 2009/125/EC; European Union Registration, Evaluation, Authorization and Restriction of

Chemicals (REACH) Directive 2006/121/EC; European Union Radio Equipment Directive (RED) 2014/53/EU.

Hereby, Klipsch Group Inc. declares that this product is in compliance with the essential requirements and other relevant provisions of Directive 2014/53/EU.

You may obtain a free copy of the Declaration of Conformity by contacting your dealer, distributor, or Klipsch Group, Inc.'s worldwide headquarters. Contact information can be found here: <http://www.klipsch.com/Contact-Us>

WEEE NOTICE

Note: This mark applies only to countries within the European Union (EU) and Norway.



This appliance is labeled in accordance with European Directive 2012/19/EU concerning waste of electrical and electronic equipment (WEEE).

This label indicates that this product should not be disposed of with household waste. It should be deposited at an appropriate facility to enable recovery and recycling.

FCC EMC COMPLIANCE INFORMATION

This device complies with Part 15 of the FCC Rules.

Operation is subject to the following two conditions:

1. This device may not cause harmful interference, and
2. This device must accept any interference received, including interference that may cause undesired operation.

NOTE: This equipment has been tested and found to comply with the limits for a Class B digital device, pursuant to part 15 of the FCC Rules. These limits are designed to provide reasonable protection against harmful interference in a residential installation. This equipment generates, uses and can radiate radio frequency energy and, if not installed and used in accordance with the instructions, may cause harmful interference to radio communications.

However, there is no guarantee that interference will not occur in a particular installation. If this equipment does cause harmful interference to radio or television reception, which can be determined by turning the equipment off and on, the user is encouraged to try to correct the interference by one or more of the following measures:

- Reorient or relocate the receiving antenna.
- Increase the separation between the equipment and receiver.
- Connect the equipment into an outlet on a circuit different from that to which the receiver is connected.
- Consult the dealer or an experienced radio/TV technician for help.

Approved under the verification provision of FCC Part 15 as a Class B Digital Device.

Caution: Changes or modifications not expressly approved by the manufacturer could void the user's authority to operate this device.

FCC WIRELESS TRANSMITTER COMPLIANCE INFORMATION

Radiation Exposure Statement: This equipment complies with FCC radiation exposure limits set forth for an uncontrolled environment. This equipment should be installed and operated with minimum distance 20cm between the radiator & your body.

CANADA EMC COMPLIANCE INFORMATION

Innovation, Science and Economic Development Canada statement:

This device complies withISED's licence-exempt RSSs. Operation is subject to the following two conditions:

1. This device may not cause harmful interference; and

2. This device must accept any interference received, including interference that may cause undesired operation.

CANADA WIRELESS TRANSMITTER COMPLIANCE INFORMATION

Radiation Exposure Statement:

This equipment complies with ISED radiation exposure limits set forth for an uncontrolled environment. This equipment should be installed and operated with minimum distance 20cm between the radiator & your body.


WIRELESS TRANSMITTER COMPLIANCE INFORMATION

The term “IC:” before the radio certification number only signifies that Industry Canada technical specifications were met.

SPECIFICATIONS

Input: 100-240V, ~50/60Hz, 120W Max Operating Temperature: 45°C

The highest altitude of this product is more than 2000 meters.

 This equipment is a Class II or double insulated electrical appliance. It has been designed in such a way that it does not require a safety connection to electrical earth.

3502 WOODVIEW TRACE, INDIANAPOLIS, IN, USA



©2023, Klipsch Group, Inc. Klipsch Group, Inc. is a wholly-owned subsidiary of Voxx International Corporation.




Klipsch and Keepers of the Sound are trademarks of Klipsch Group, Inc., registered in the United States and other countries.

The Bluetooth® word mark is a registered trademark owned by Bluetooth SIG, Inc. and any use of such mark by Klipsch Group, Inc. is under license.
V03 – 230717

Documents / Resources

	Klipsch The Three Plus Wireless Powered Speaker [pdf] User Guide STI-THREEPLUS, STITHREEPLUS, threeplus, The Three Plus, The Three Plus Wireless Powered Speaker, Wireless Powered Speaker, Powered Speaker, Speaker
--	---

References

-  [Speakers, Headphones, and Premium Home Audio | Klipsch](#)
-  [Speakers, Headphones, and Premium Home Audio | Klipsch](#)
-  [Contact Us | Klipsch](#)