

Klipsch R-10B Sound Bar with Wireless Subwoofer Installation Guide

Contents

1 R-10B Sound Bar with Wireless Subwoofer

1.1 CONTENTS

1.2 BUTTONS

1.3 DIGITAL OPTICAL CONNECTION (PREFERRED – IF TV HAS NO OPTICAL OUT SEE NEXT PAGE)

1.4 3.5mm TO DUAL RCA ANALOG CONNECTION (IF TV HAS NO HEADPHONE OUT SEE NEXT PAGE)

1.5 DUAL RCA TO DUAL RCA ANALOG CONNECTION

1.6 SUBWOOFER WIRELESS CONNECTION

1.7 BLUETOOTH® WIRELESS TECHNOLOGY

1.8 SOUNDBAR PLACEMENT

1.9 SUBWOOFER PLACEMENT

1.10 TV REMOTE PROGRAMMING

1.11 REMOTE CONTROL CODES

1.12 STATUS LIGHTS

1.13 TURN OFF TV SPEAKERS

1.14 CARE AND CLEANING

2 Documents / Resources

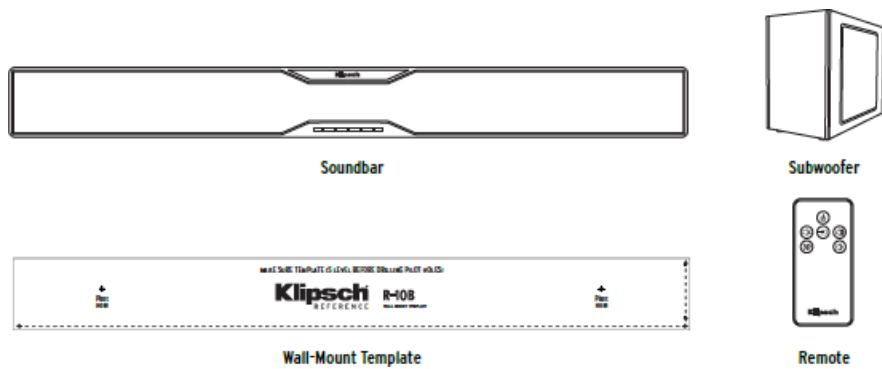
2.1 References

3 Related Posts

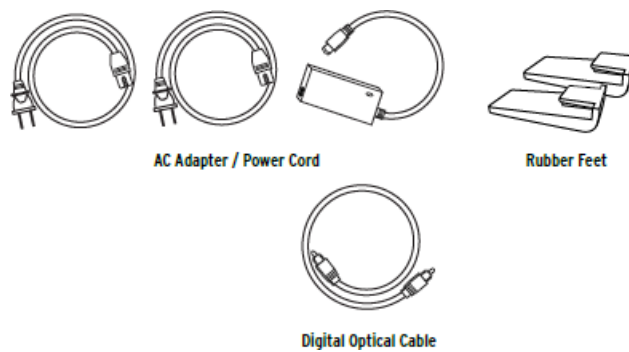
R-10B Sound Bar with Wireless Subwoofer



CONTENTS



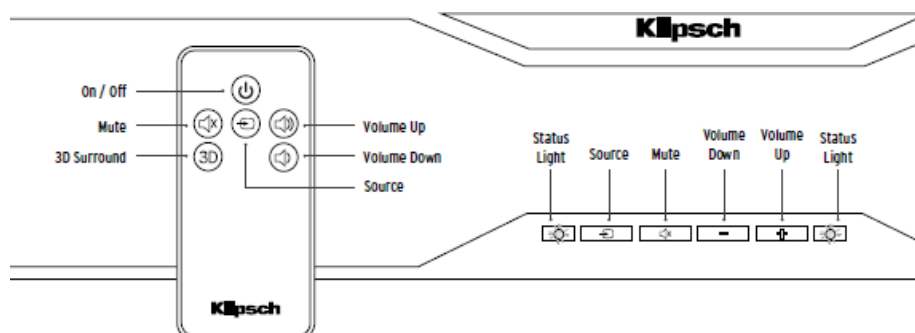
- Soundbar
- Subwoofer
- Wall-Mount Template
- Remote



- AC Adapter / Power Cord
- Rubber Feet
- Digital Optical Cable

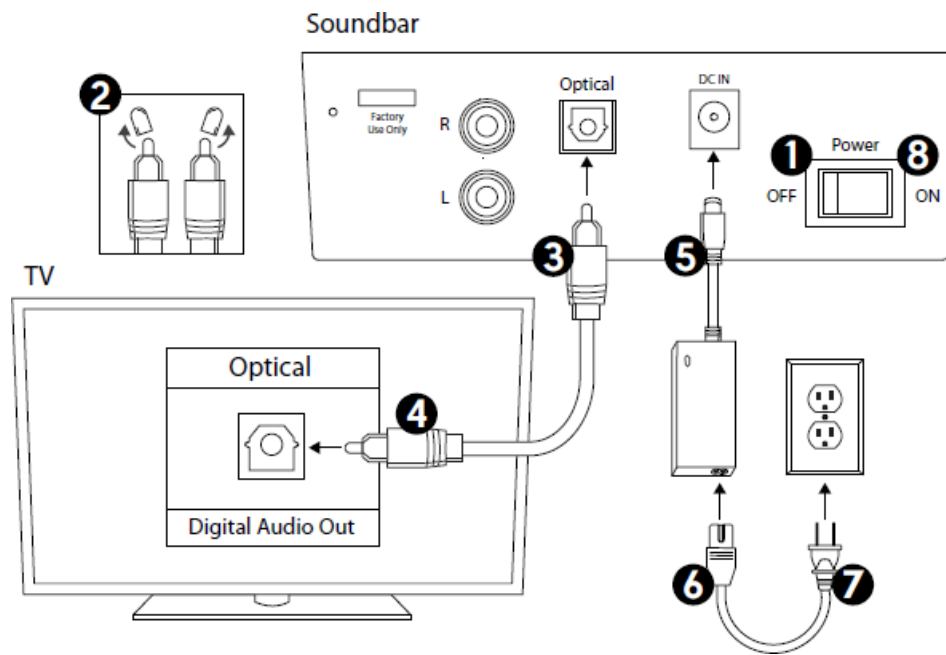
BUTTONS

Touches

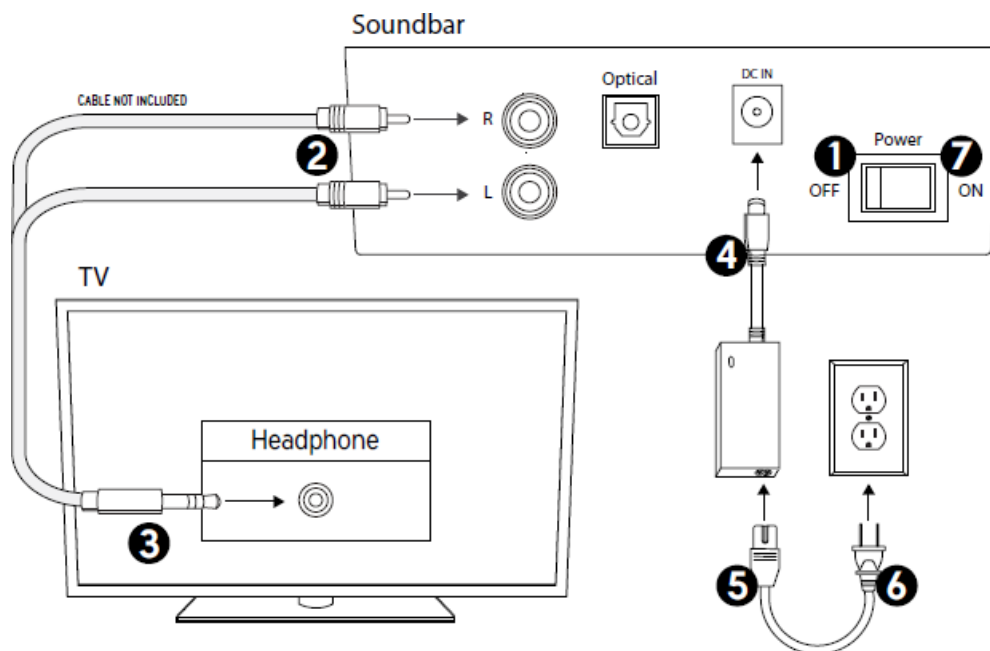


- On /Off
- Mute
- 3D Surround
- Source
- Volume Up
- Volume Down

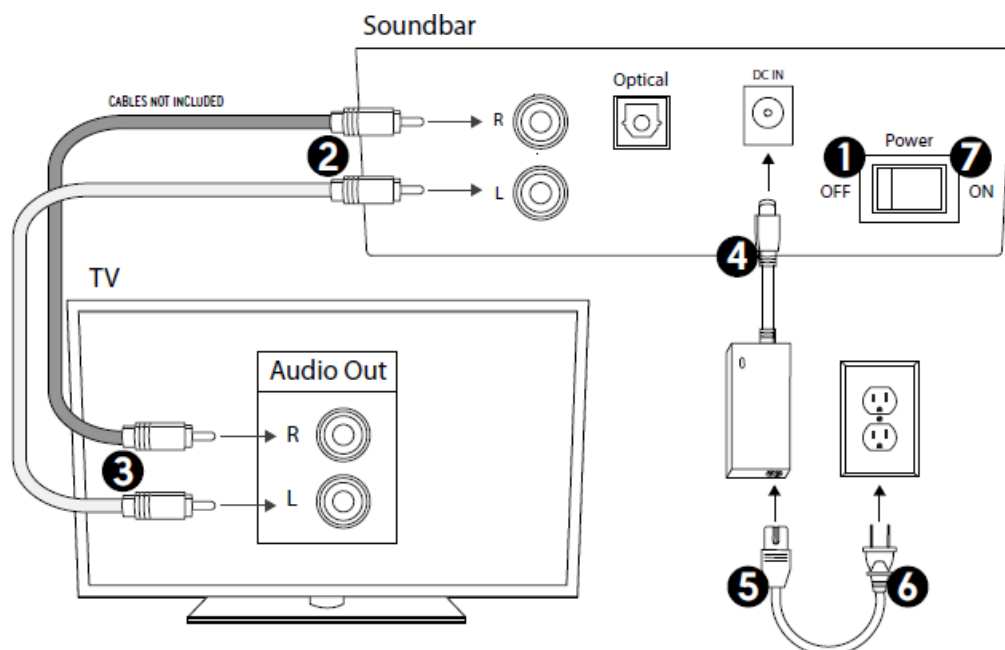
DIGITAL OPTICAL CONNECTION (PREFERRED – IF TV HAS NO OPTICAL OUT SEE NEXT PAGE)



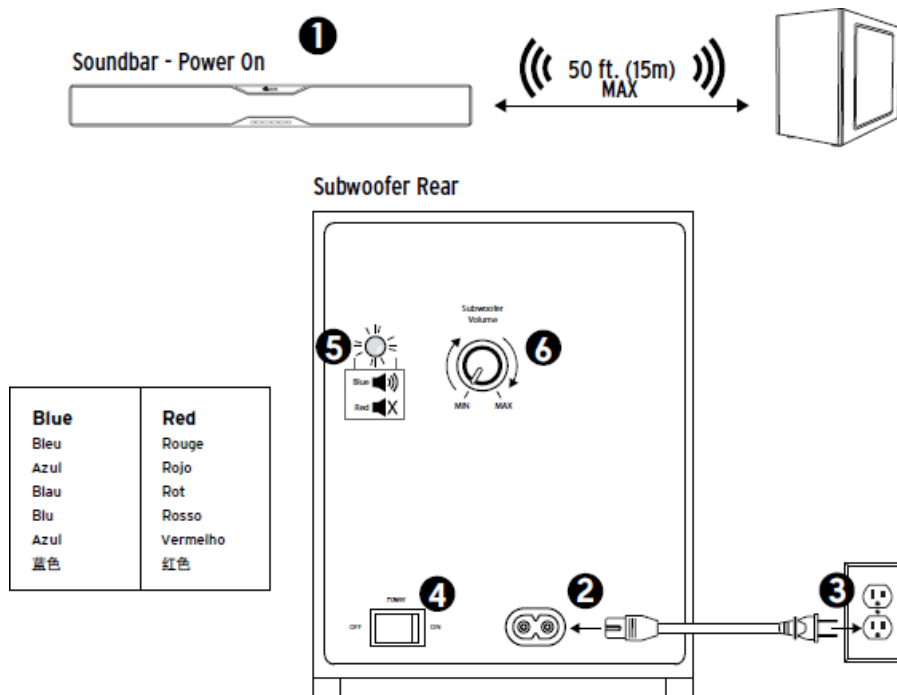
3.5mm TO DUAL RCA ANALOG CONNECTION (IF TV HAS NO HEADPHONE OUT SEE NEXT PAGE)



DUAL RCA TO DUAL RCA ANALOG CONNECTION

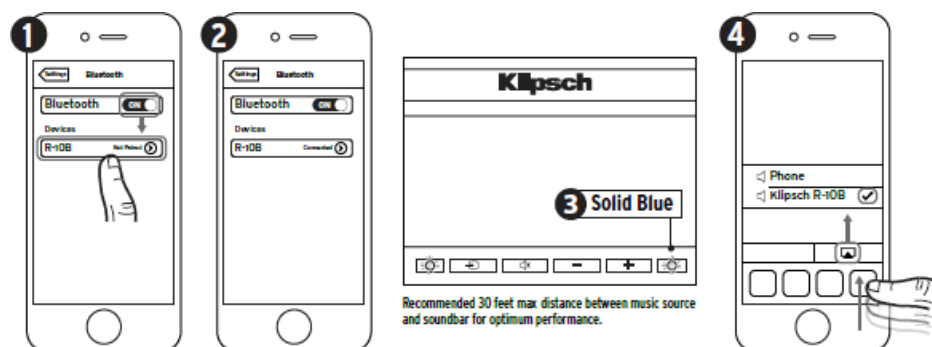


SUBWOOFER WIRELESS CONNECTION



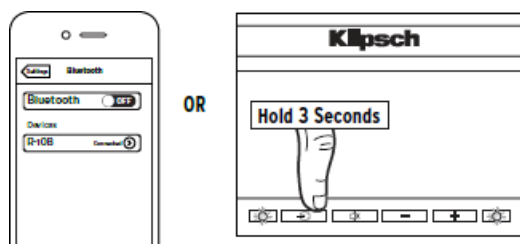
BLUETOOTH® WIRELESS TECHNOLOGY

CONNECT



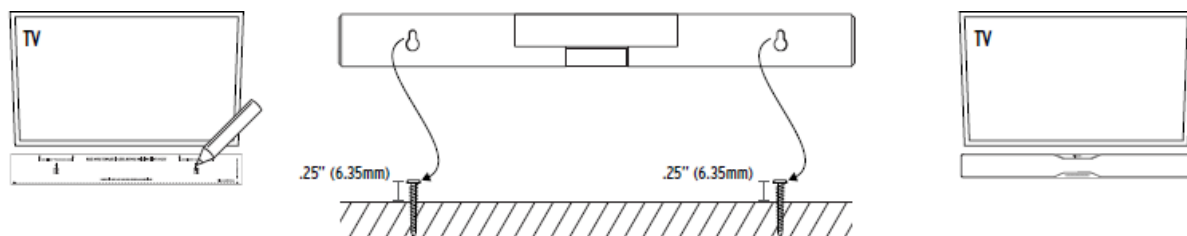
Example only. Your device may differ

DISCONNECT

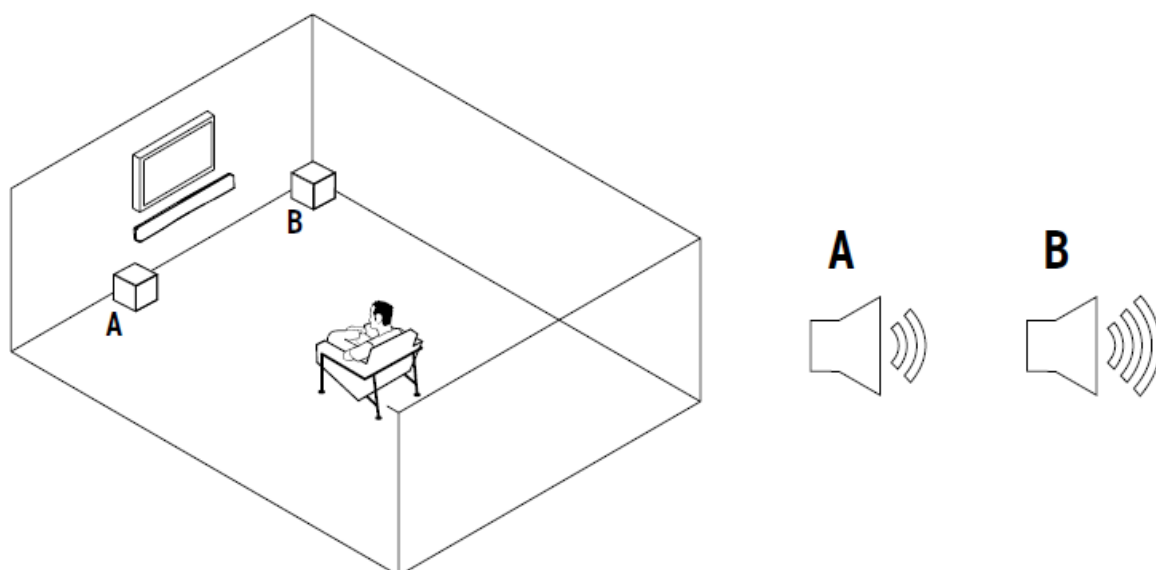


- Solid Blue
- Hold 3 Seconds

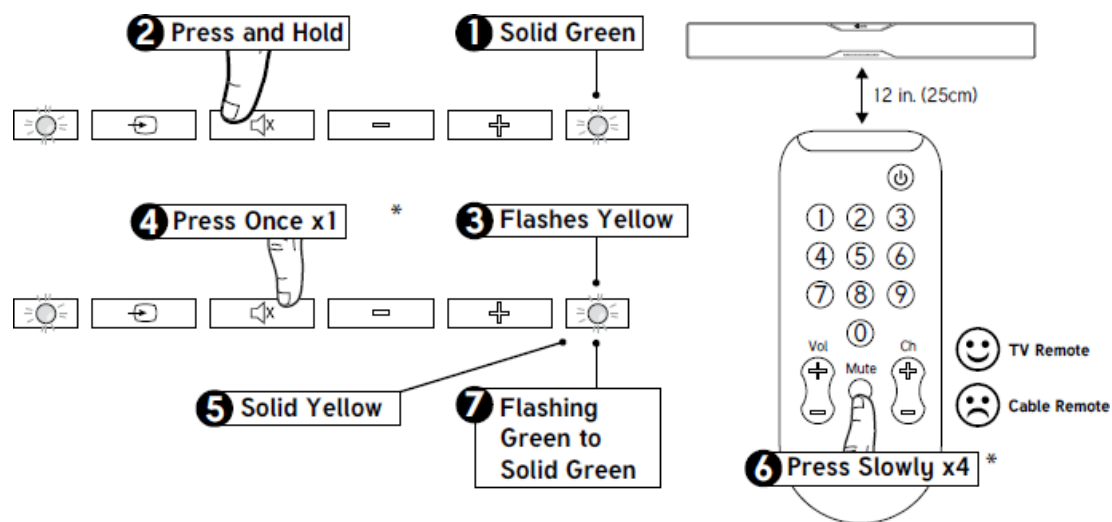
SOUNDBAR PLACEMENT



SUBWOOFER PLACEMENT



TV REMOTE PROGRAMMING



To program Volume Up and Volume Down buttons repeat the steps shown and replace steps 4 and 6 with the button you want to program.

- Press and Hold
- Flashes Yellow
- Solid Yellow
- Press x1
- Flashing Green
- Solid Green
- Press Slowly x4

To program Volume Up and Volume Down buttons repeat the steps shown and replace steps 4 and 6 with the button you want to program.

REMOTE CONTROL CODES

RCA*	41609
ONE FOR ALL	1609 OR 0531
DIRECTV	31609 OR 30531
XFINITY**	30531
BRIGHT HOUSE	048
AT&T	5144

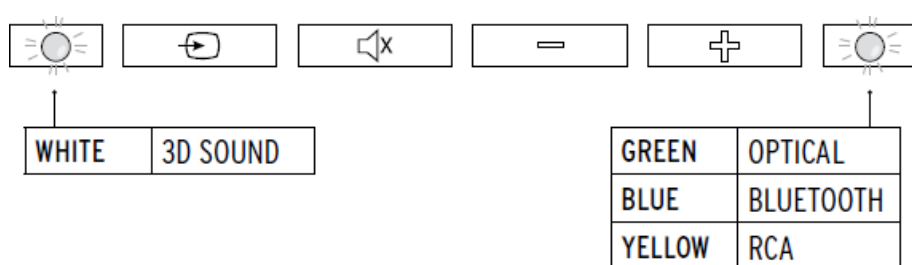
HEX CODES – SET 1	
VOLUME UP	0x 856A 9F60
VOLUME DOWN	0x 856A 9E61
MUTE	0x 856A 9966

HEX CODES – SET 2	
VOLUME UP	0x 02A1 DF3B
VOLUME DOWN	0x 02A1 DF3F
MUTE	0x 02A1 DF5F

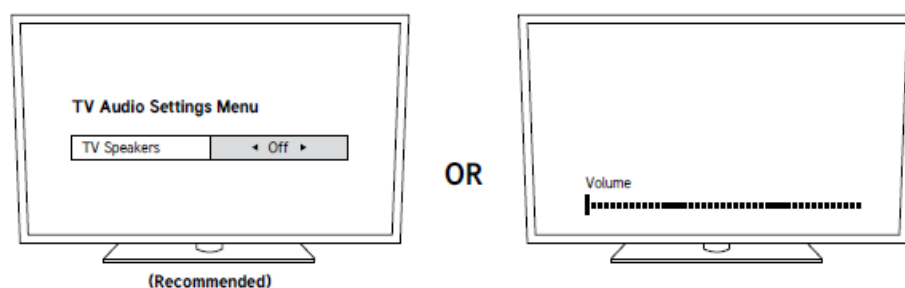
*MUST HAVE AUDIO/AUX BUTTON

** RED CENTER BUTTON

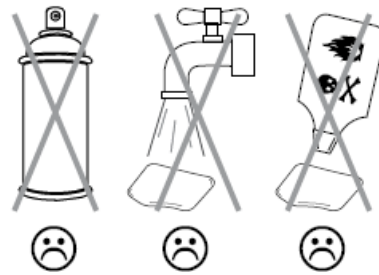
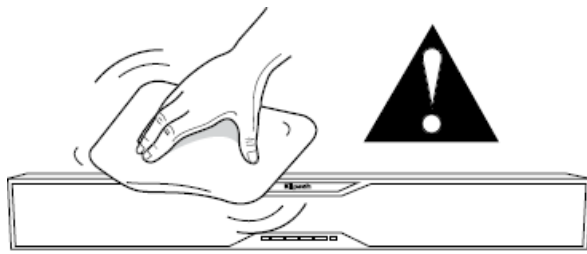
STATUS LIGHTS



TURN OFF TV SPEAKERS



CARE AND CLEANING



3502 WOODVIEW TRACE, INDIANAPOLIS, IN, USA

KLIPSCH.COM

©2014, Klipsch Group, Inc. Klipsch Group, Inc. is a wholly-owned subsidiary of Vox International Corporation. Klipsch and Keepers of the Sound are trademarks of Klipsch Group, Inc., registered in the United States and other countries. The Bluetooth® word mark is a registered trademark owned by Bluetooth SIG, Inc. and any use of such mark by Klipsch Group, Inc. is under license.

Documents / Resources



[Klipsch R-10B Sound Bar with Wireless Subwoofer](#) [pdf] Installation Guide

R-10B Sound Bar with Wireless Subwoofer, R-10B, Sound Bar with Wireless Subwoofer, Wireless Subwoofer

References

- [Speakers, Headphones, and Premium Home Audio | Klipsch](#)
- [Manual-Hub.com - Free PDF manuals!](#)
- [User Manual](#)

[Manuals+](#), [Privacy Policy](#)

This website is an independent publication and is neither affiliated with nor endorsed by any of the trademark owners. The "Bluetooth®" word mark and logos are registered trademarks owned by Bluetooth SIG, Inc. The "Wi-Fi®" word mark and logos are registered trademarks owned by the Wi-Fi Alliance. Any use of these marks on this website does not imply any affiliation with or endorsement.