



Klipsch PM21BT Wired Computer Speaker Owner's Manual

[Home](#) » [Klipsch](#) » Klipsch PM21BT Wired Computer Speaker Owner's Manual 

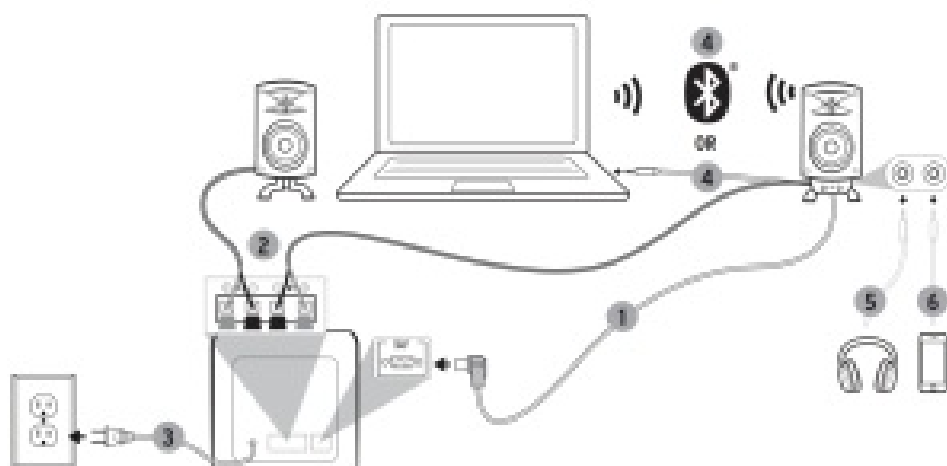
Klipsch PM21BT Wired Computer Speaker



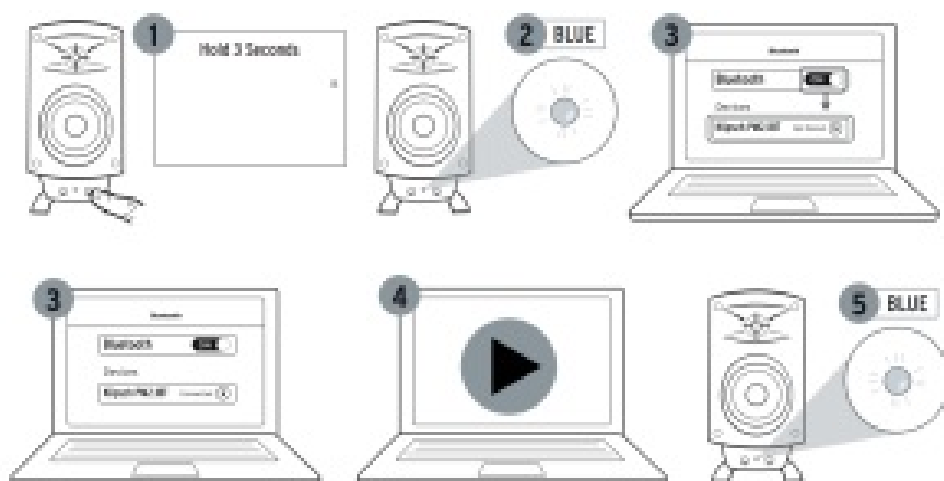
Contents

- 1 SPEAKER PLACEMENT
- 2 BLUETOOTH® WIRELESS TECHNOLOGY
- 3 CONTROLS
- 4 VOLUME
- 5 SUPPORT AND TROUBLESHOOTING
- 6 FIRMWARE UPDATES
- 7 IMPORTANT SAFETY INSTRUCTIONS
 - 7.1 EU COMPLIANCE INFORMATION
 - 7.2 WEEE NOTICE
 - 7.3 FCC AND CANADA EMC COMPLIANCE INFORMATION
- 8 Documents / Resources
- 9 Related Posts

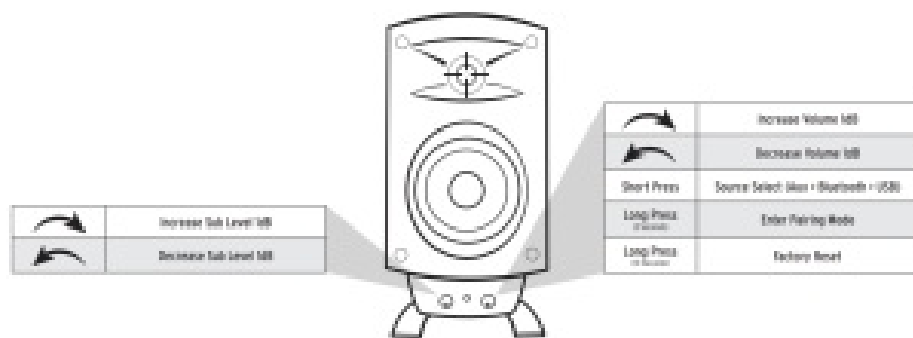
SPEAKER PLACEMENT



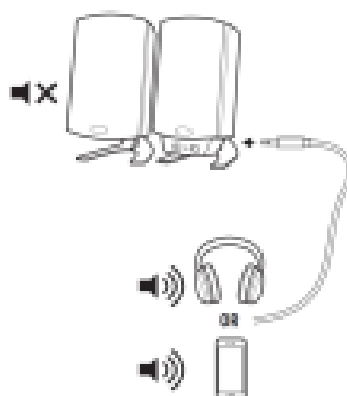
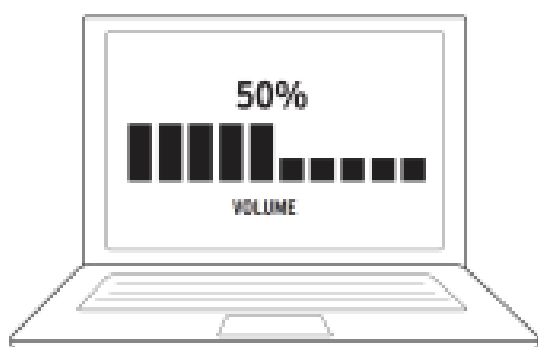
BLUETOOTH® WIRELESS TECHNOLOGY



CONTROLS



VOLUME



SUPPORT AND TROUBLESHOOTING



For support and troubleshooting for your Klipsch product, scan here with your smartphone or tablet or go to [KLIPSCH.COM/SUPPORT](https://www.klipsch.com/support)

FIRMWARE UPDATES



To ensure optimal performance for years to come, your Klipsch product may need occasional firmware updates.

For most up-to-date firmware files and updating instructions, scan here with your smartphone or tablet or go to [KLIPSCH.COM/FIRMWARE](https://www.klipsch.com/firmware)

3502 Woodview Trace, Indianapolis, IN, USA

[KLIPSCH.COM](https://www.klipsch.com)

1-800-KLIPSCH ©2016 Klipsch Group, Inc. All rights reserved. Klipsch and Keepers of the Sound are registered trademarks of Klipsch Group, Inc. in the USA and other countries.

A wholly-owned subsidiary of Vox International Corporation.

The Bluetooth® word mark and logos are registered trademarks owned by Bluetooth SIG, Inc. and any use of such mark by Klipsch Group, Inc. is under license.

IMPORTANT SAFETY INSTRUCTIONS

1. READ these instructions.
2. KEEP these instructions.
3. HEED all warnings.
4. FOLLOW all instructions.
5. DO NOT use this apparatus near water.
6. CLEAN ONLY with dry cloth.
7. DO NOT block any ventilation openings. Install in accordance with the manufacturer's Instructions.
8. DO NOT install near any heat sources such as radiators, heat registers, stoves, or other apparatus (including amplifiers) that produce heat.
9. DO NOT defeat the safety purpose of the polarized or grounding type plug. A polarized plug has two blades with one wider than the other. A grounding type plug has two blades and a third grounding prong. The wider blade or the third prong are provided for your safety. If the provided plug does not fit into your outlet, consult an electrician for replacement of the obsolete outlet.
10. PROTECT the power cord from being walked on or pinched, particularly at plugs, convenience receptacles, and the point where they exit from the apparatus.
11. ONLY USE attachments/accessories specified by the manufacturer.
12. USE ONLY with the cart, stand, tripod, bracket, or table specified by the manufacturer, or sold with the apparatus. When a cart is used, use caution when moving the cart/apparatus combination to avoid injury from tip-over.



13. UNPLUG this apparatus during lightning storms or when unused for long periods of time.
14. REFER all servicing to qualified service personnel. Servicing is required when the apparatus has been damaged in any way, such as power-supply cord or plug is damaged, liquid has been spilled or objects have fallen into the apparatus, the apparatus has been exposed to rain or moisture, does not operate normally, or

has been dropped.

15. DO NOT expose this apparatus to dripping or splashing and ensure that no objects filled with liquids, such as vases, are placed on the apparatus.
16. To completely disconnect this apparatus from the AC Mains, disconnect the power supply cord plug from the AC receptacle.
17. The mains plug is used as disconnect device, the disconnect device shall remain readily operable.
18. DO NOT overload wall outlets or extension cords beyond their rated capacity as this can cause electric shock or fire.
19. Minimum 10 cm distances around the apparatus for sufficient ventilation;
20. the ventilation should not be Impeded by covering the ventilation openings with items, such as newspapers, table-cloths, curtains, etc.;
21. no naked flame sources, such as lighted candles, should be placed on the apparatus;
22. the use of apparabJs in tropical and/or moderate climates.



The exclamation point, within an equilateral triangle, is Intended to alert the user to the presence of Important operating and maintenance (servicing) Instructions In the literature accompanying th e product.



The lightning flashwith arrowhead symbol within an equilateral triangle is intended to alert the user to the presence of uninsulated “dangerous voltage” within the product’s enclosure that may be of s ufficient magnitude to constitute a risk of electrical shock to persons.

WARNING: To reduce the risk of fire or electrical shock, do not expose this apparatus to rain or moisture.

WARNING: No naked flame sources – such as candles – should be placed on the product.



WARNING: Do Not Open! Risk of Electrical Shock. Voltages in this equipment are hazardous to life. No user-serviceable parts inside. Refer all servicing to qualified service personnel.

Place the equipment near a main power supply outlet and make sure that you can easly access the power breaker switch.



This equipment is a Class II or double insulated electrical appliance. It has been designed in such a way that it does not require a safety connection to electrical earth.

EU COMPLIANCE INFORMATION

Eligible to bear the CE mark; Conforms to European Union Low Voltage Directive 2014/35/EU; European Union EMC Directive 2014/30/EU; European Union WEEE Directive 2002/96/EC; European Union Eco-Design Directive 2009/125/EC; European Union Radio and Telecommunications Terminal Equipment (R&TTE) Directive 2014/53/EU; European Union Restriction of Hazardous Substances Recast (RoHS2) Directive 2011/65/EU; You may obtain a free copy of the Declaration of Conformity by contacting your dealer, distributor, or Klipsch Group, Inc.'s worldwide headquarters. Contact information can be found here: <http://www.klipsch.com/Contact-Us>

WEEE NOTICE

Note: This mark applies only to countries within the European Union (EU) and Norway.



This appliance is labeled in accordance with European Directive 2002/96/EC concerning waste of electrical – and electronic equipment (WEEE). This label indicates that this product should not be disposed of with household waste. It should be deposited at an appropriate facility to enable recovery and recycling.

FCC AND CANADA EMC COMPLIANCE INFORMATION

This device complies with part 15 of the FCC Rules. Operation is subject to the following two conditions:

(1) This device may not cause harmful interference, and (2) this device must accept any interference received, including interference that may cause undesired operation.

NOTE: This equipment has been tested and found to comply with the limits for a Class B digital device, pursuant to part 15 of the FCC Rules. These limits are designed to provide reasonable protection against harmful interference in a residential installation. This equipment generates, uses and can radiate radio frequency energy and, if not installed and used in accordance with the instructions, may cause harmful interference to radio communications. However, there is no guarantee that interference will not occur in a particular installation. If this equipment does cause harmful interference to radio or television reception, which can be determined by turning the equipment off and on, the user is encouraged to try to correct the interference by one or more of the following measures:

- Reorient or relocate the receiving antenna.
- Increase the separation between the equipment and receiver.
- Connect the equipment into an outlet on a circuit different from that to which the receiver is connected.
- Consult the dealer or an experienced radio/TV technician for help.

Approved under the verification provision of rec Part 15 as a Class B Digital Device.

Caution: Changes or modifications not expressly approved by the manufacturer could void the user's authority to operate this device.

Caution: To comply with the limits of the Class B digital device, pursuant to Part 15 of the FCC Rules, this device is to comply with Class B limits. All peripherals must be shielded and grounded. Operation with non-certified peripherals or non-shielded cables may result in interference to radio or reception.


This Class B digital apparatus complies with Canadian ICES-003. CAN ICES-3 (B)/NMB-3(8) Cet appareil numérique de la classe B est conforme à la norme NMB-003 du Canada.

This device contains licence-exempt transmitter (s)/receiver(s) that comply with Innovation, Science and Economic Development Canada's licence-exempt RSS(s). Operation is subject to the following two conditions:

- (1) This device may not cause interference; and
- (2) This device must accept any interference, including interference that may cause undesired operation of the device.

This equipment complies with FCC and IC radiation exposure limits set forth for an uncontrolled environment This equipment should be installed and operated with minimum distance 20cm between the radiator and your body. This transmitter must not be co-located or operating in conjunction with any other antenna or transmitter.

Documents / Resources

	<p>Klipsch PM21BT Wired Computer Speaker [pdf] Owner's Manual PM21BT, 2ATKO-PM21BT, 2ATKOPM21BT, PM21BT Wired Computer Speaker, Wired Comput er Speaker, Computer Speaker, Speaker</p>
---	--