



Klipsch Flexus SURR 100 Onkyo Powered Flexus Soundbar System User Manual

[Home](#) » [Klipsch](#) » Klipsch Flexus SURR 100 Onkyo Powered Flexus Soundbar System User Manual 



AUTHENTIC
AMERICAN
AUDIO
 SINCE 1946
Flexus SURR 100
Surround Speakers

Contents

- 1 KLIPSCH CONNECT APP
- 2 ADD TO YOUR SYSTEM
- 3 IMPORTANT SAFETY INSTRUCTIONS
- 4 INSIDE
- 5 SYSTEM SETUP
- 6 SURROUND PLACEMENT
- 7 SURROUND LEVEL ADJUSTMENT
- 8 SURROUND RECONNECT
- 9 ADDITIONAL PERIPHERALS
- 10 SOUND BAR CONTROLS
- 11 ADJUSTING BASS LEVEL
- 12 NIGHT MODE
- 13 FACTORY RESET
- 14 Documents / Resources
 - 14.1 References

KLIPSCH CONNECT APP

APPLICATION KLIPSCH CONNECT

1. Download the Klipsch Connect app
2. Follow the instructions



<http://klipsch.com/flexus-get-started>

KLIPSCH.COM/FLEXUS-GET-STARTED

ADD TO YOUR SYSTEM

Flexus Sound System is built to grow with you. Add up to two wireless surround speakers and two wireless subwoofers to create a home theater.

For more information, please visit: <link to Flexus landing page>

IMPORTANT SAFETY INSTRUCTIONS

1. Read these instructions
2. Keep these instructions
3. Heed all warnings
4. Follow all instructions

5. Do not use this apparatus near water
6. Clean only with dry cloth.
7. Do not block any ventilation openings. Install in accordance with the manufacture's instructions.
8. Do not install near any heat sources such as radiators, heat registers, stoves, or other apparatus (including amplifiers) that produce heat.
9. Do not defeat the safety purpose of the polarized or grounding plug. A polarized plug has two blades with one wider than the other. A grounding plug has two blades and a third grounding prong. The wide blade or the third prong is provided for your safety. If the provided plug does not fit into your outlet, consult an electrician for replacement of the obsolete outlet.
10. Protect the power cord from being walked on or pinched particularly at the plugs, convenience receptacles, and at the point where they exit from the apparatus.
11. Only use attachments/accessories specified by the manufacturer.
12. Use only with the cart, stand, tripod, bracket, or table specified by the manufacturer, or sold with the apparatus. When a cart or rack is used, use caution when moving the cart/apparatus combination to avoid injury from tip-over.



13. Unplug the apparatus during lightning storms or when unused for long periods of time. Refer all servicing to qualified personnel. Servicing is required when the apparatus has been damaged in any way, such as power supply cord or plug is damaged, liquid has been spilled or objects have fallen into the apparatus has been exposed to rain or moisture, does not operate normally, or has been dropped.

FCC AND CANADA EMC COMPLIANCE INFORMATION

1. This device complies with Part 15 of the FCC Rules. Operation is subject to the following two conditions:
 - (1) This device may not cause harmful interference, and (2) This device must accept any interference received, including interference that may cause undesired operation.
2. Any Changes or modifications not expressly approved by the party responsible for compliance could void the user's authority to operate the equipment.

NOTE: This equipment has been tested and found to comply with the limits for a Class B digital device, pursuant to Part 15 of the FCC Rules. These limits are designed to provide reasonable protection against harmful interference in a residential installation. This equipment generates uses and can radiate radio frequency energy and, if not installed and used in accordance with the instructions, may cause harmful interference to radio communications. However, there is no guarantee that interference will not occur in a particular installation. If this equipment does cause harmful interference to radio or television reception, which can be determined by turning the equipment off and on, the user is encouraged to try to correct the interference by one or more of the following measures:

- Reorient or relocate the receiving antenna.
- Increase the separation between the equipment and receiver.

- Connect the equipment into an outlet on a circuit different from that to which the receiver is connected.
- Consult the dealer or an experienced radio/TV technician for help.

FCC RF Radiation Exposure Statement

1. This equipment complies with FCC RF radiation exposure limits set forth for an uncontrolled environment.
2. This transmitter must not be colocated or operating in conjunction with any other antenna or transmitter.
3. This equipment complies with FCC radiation exposure limits set forth for an uncontrolled environment. This equipment should be installed and operated with minimum distance 20cm between the radiator & your body.

CE RF Radiation Exposure Statement

This device can be operated in at least one Member State without infringing applicable requirements on the use of radio spectrum.

This equipment complies with EU radiation exposure limits set forth for an uncontrolled environment.

This equipment should be installed and operated with minimum distance 20 cm between the radiator and your body.

This device complies with Industry Canada's licence-exempt RSSs. Operation is subject to the following two conditions:

- (1) This device may not cause interference; and
- (2) This device must accept any interference, including interference that may cause undesired operation of the device

Radio Frequency (RF) Exposure Information

The radiated output power of the Wireless Device is below the Industry Canada (IC) radio frequency exposure limits. The Wireless Device should be used in such a manner such that the potential for human contact during normal operation is minimized.

This device has also been evaluated and shown compliant with the IC RF Exposure limits under mobile exposure conditions. (antennas are greater than 20cm from a person's body).

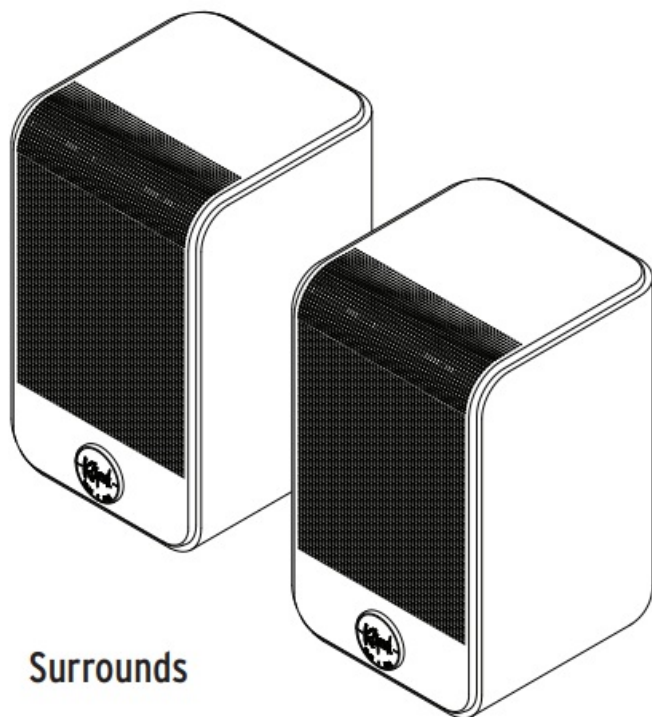
for each off mode, standby mode (or another condition which does not exceed the applicable power consumption requirements for off mode or standby mode) and networked standby into which the equipment is switched by the power management function or similar function:

- the power consumption expressed in watts rounded to the first decimal place;
- the period after which the equipment reaches automatically standby mode, off mode or networked standby in minutes and rounded to the nearest minute;

DC OUT 1 ———USB Type-C(5V/0.5A)

INSIDE

CONTENU



Surrounds



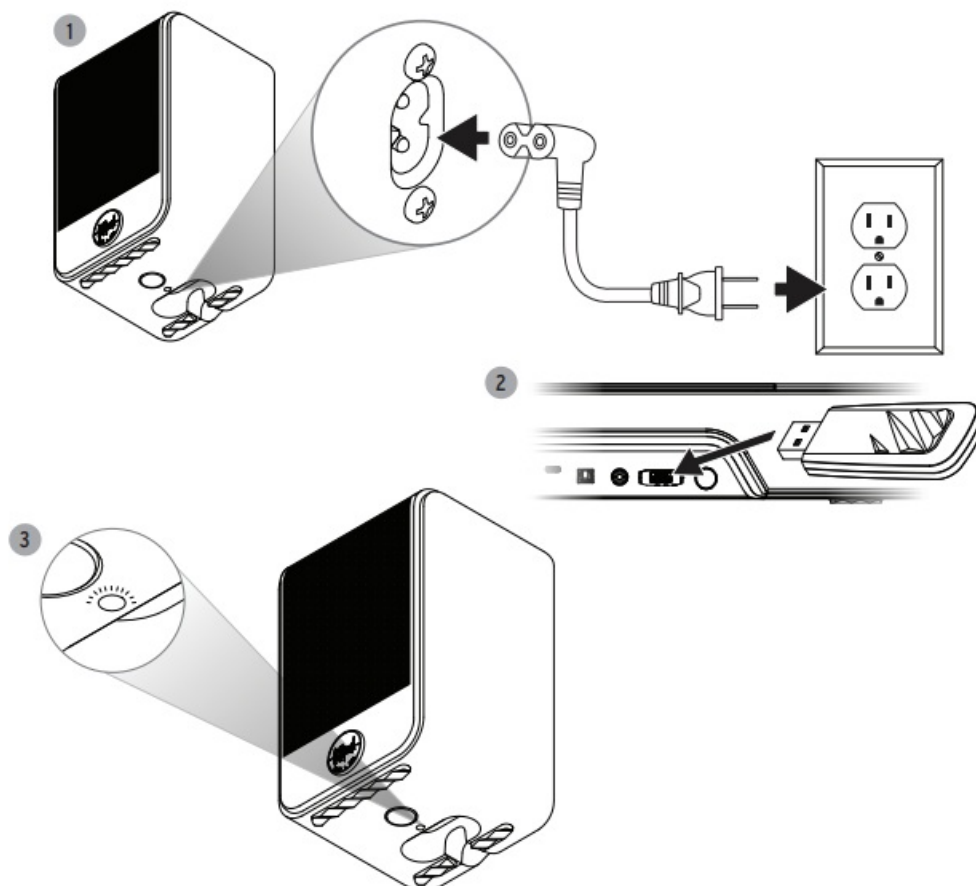
Flexus Transmitter



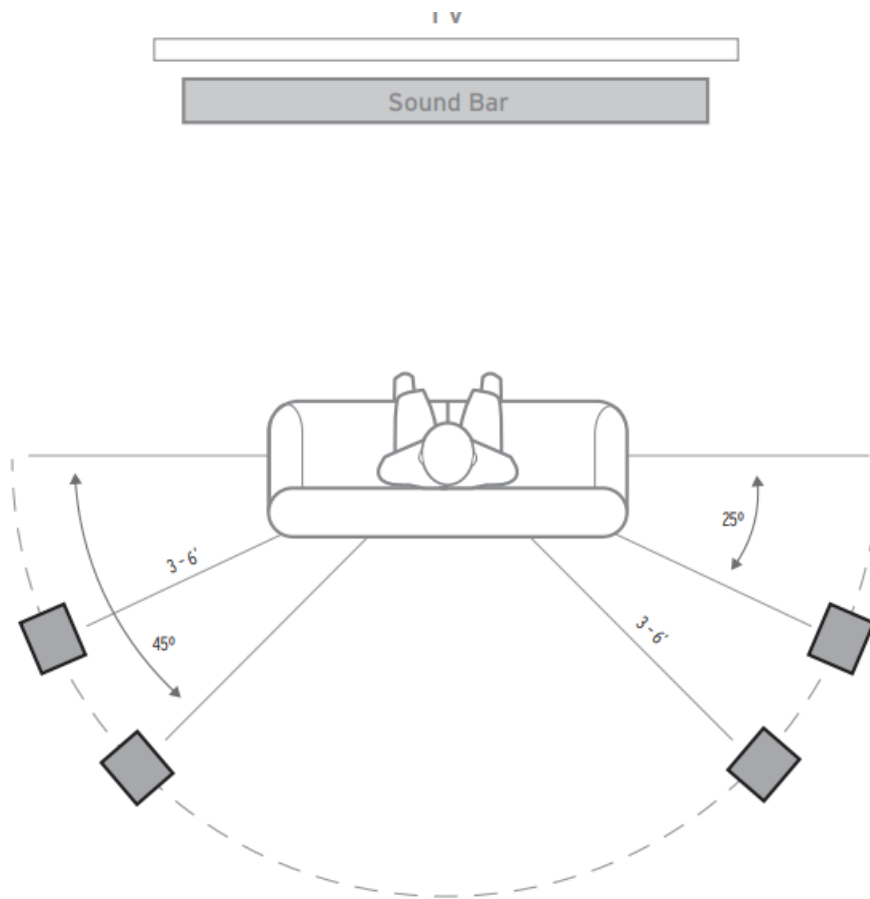
Power Cord (x2)

Surrounds	Power Cord	Flexus Transmitter
-----------	------------	--------------------

SYSTEM SETUP

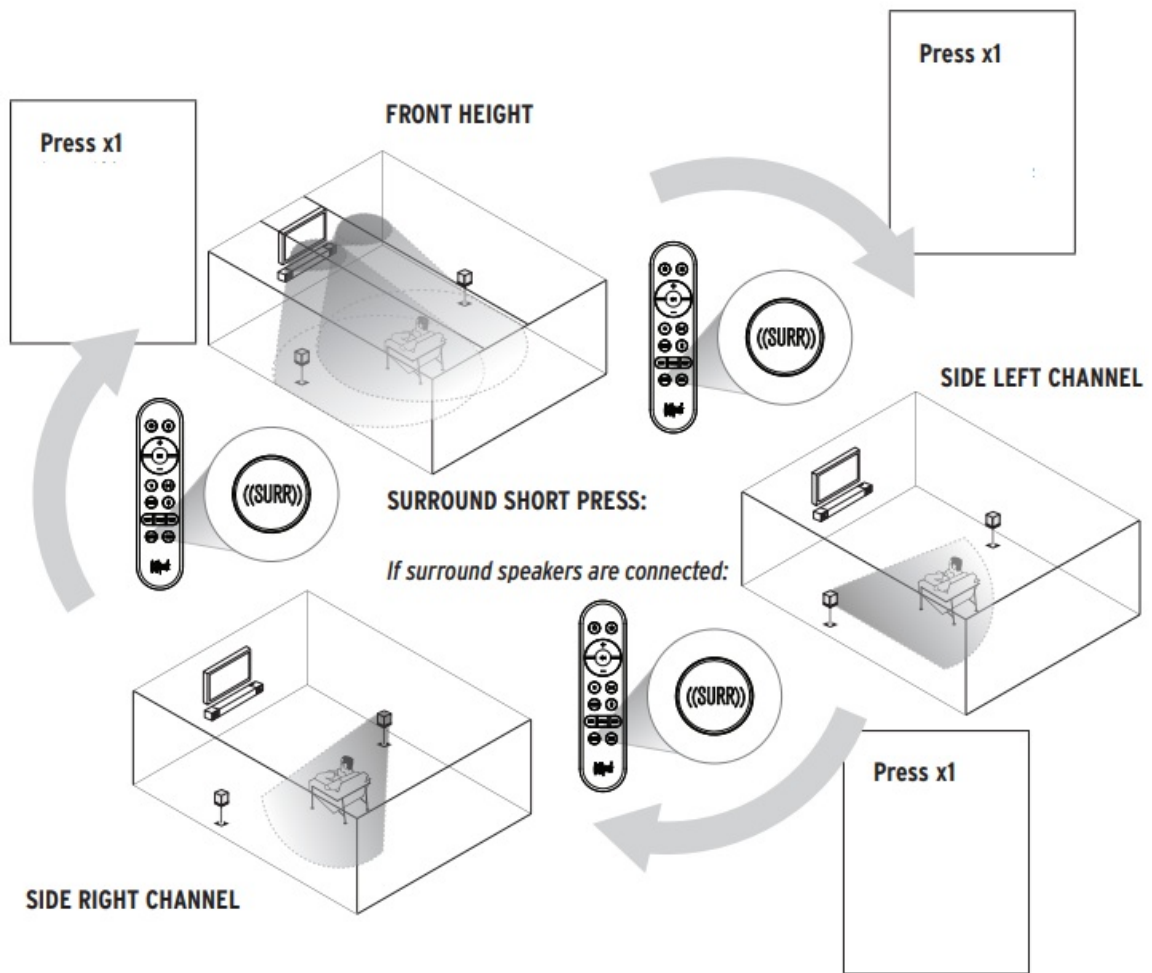


SURROUND PLACEMENT

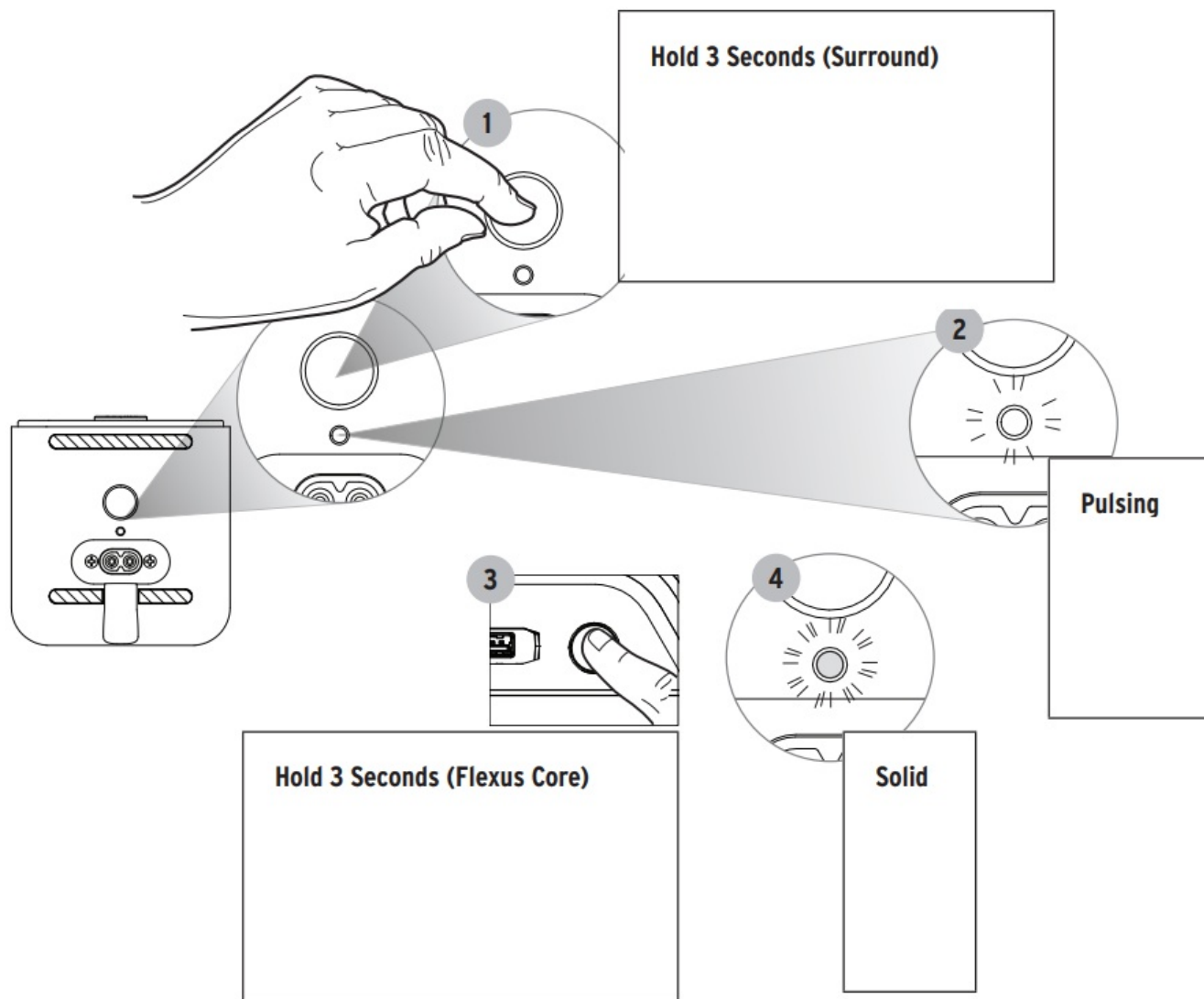


Corner placement will increase the amount of bass output, while placing the subwoofer along the middle of a wall, or out in the room will decrease the amount of bass output.

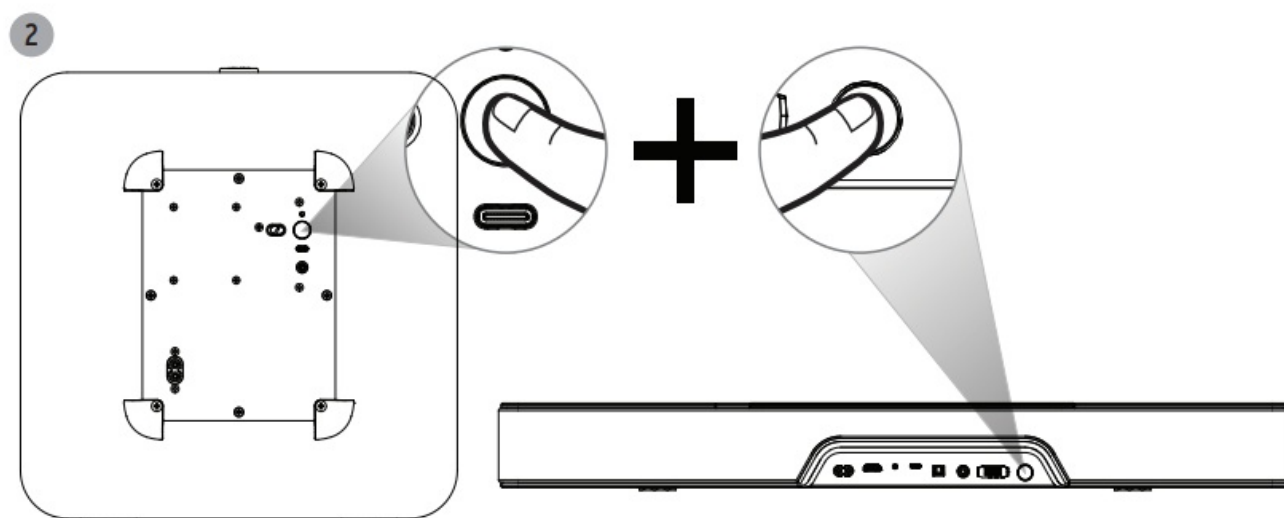
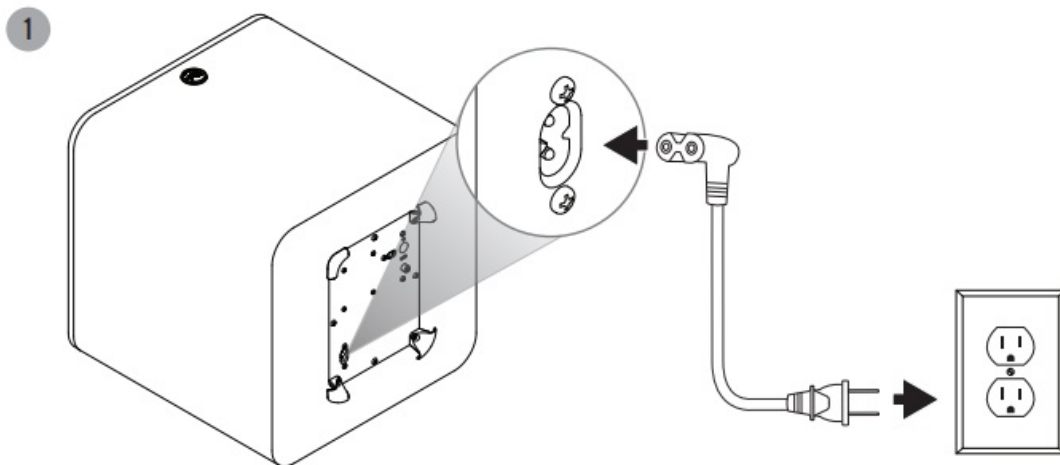
SURROUND LEVEL ADJUSTMENT



SURROUND RECONNECT

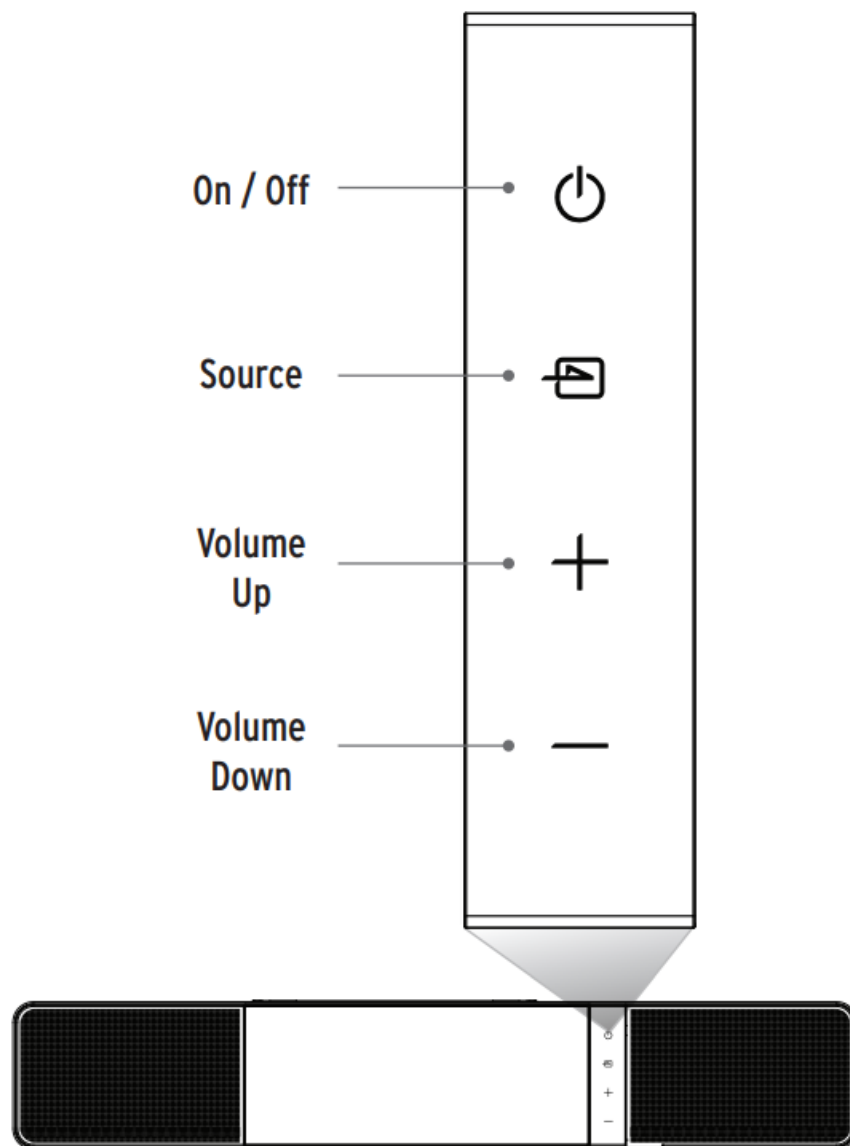


ADDITIONAL PERIPHERALS

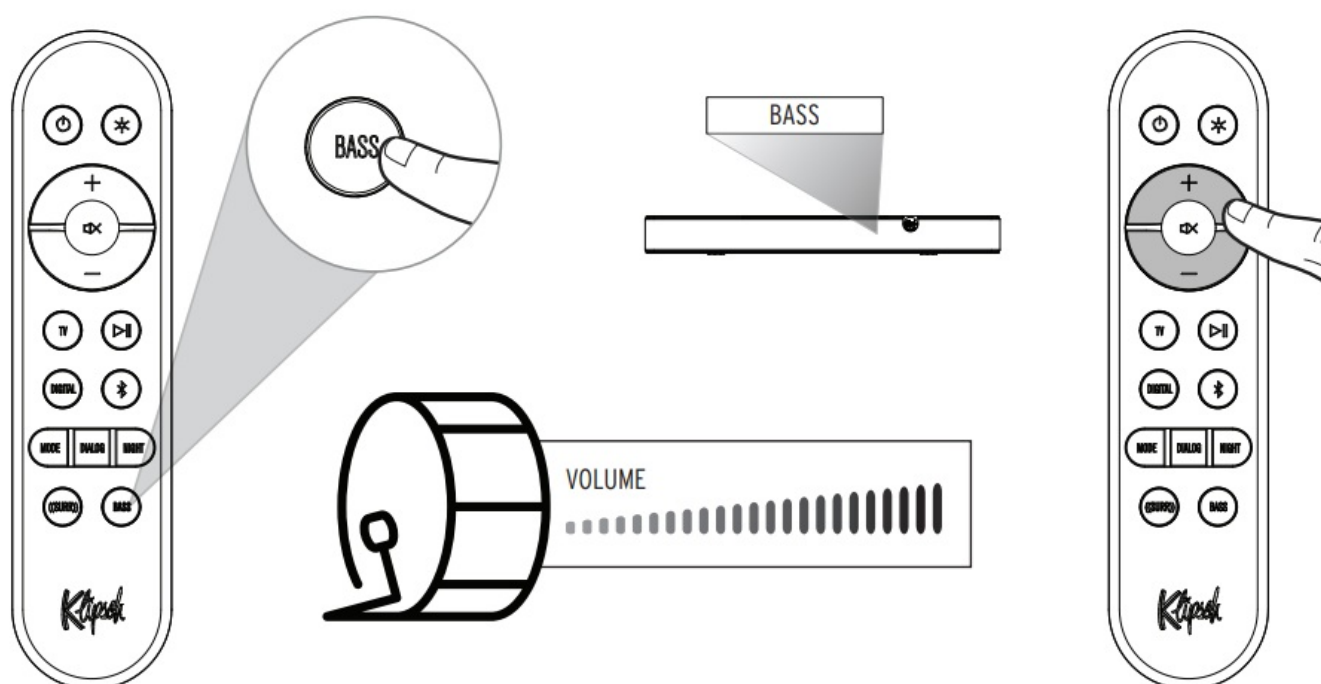


SOUND BAR CONTROLS

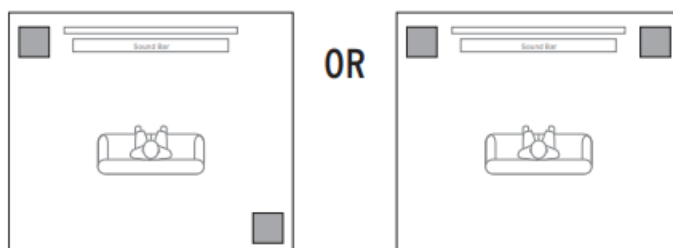
On / Off	Source Select (Toggle)
Volume Down	Volume Up



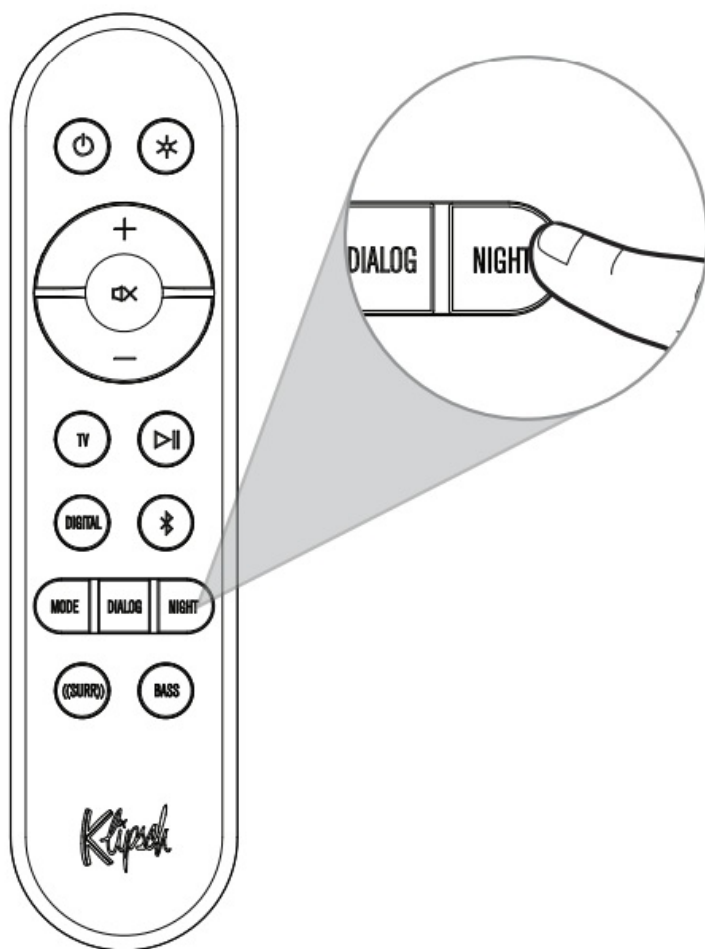
ADJUSTING BASS LEVEL



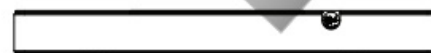
RECOMMENDED PLACEMENT FOR DUAL SUBWOOFERS:



NIGHT MODE



NGT OFF



NIGHT DISABLED

Full dynamic range with full bass



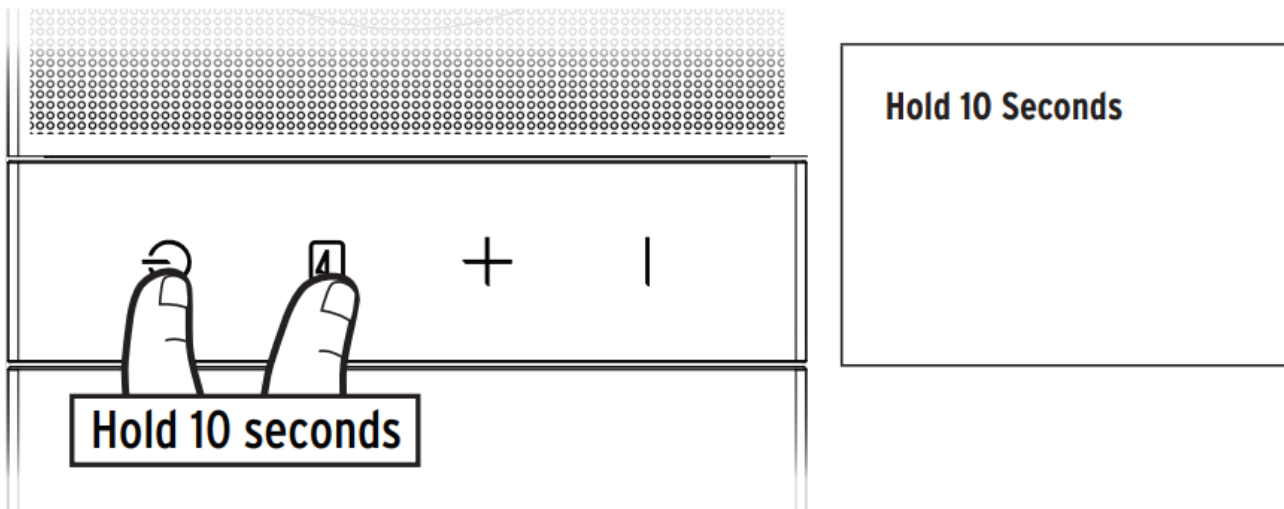
NGT ON



NIGHT ENABLED

Reduced dynamic range with compressed bass for low volume listening

FACTORY RESET



Clears Bluetooth® pairing history and user programmed IR commands

LED DISPLAY

	DISPLAY	BAR STATUS
OTHER	PAIRING	Peripheral pairing
	PAIR FAILED	Subwoofer/surrounds failed to pair
	SURR PAIRED	Surrounds paired

Bluetooth® “The Bluetooth® word mark and logos are registered trademarks owned by the Bluetooth SIG, Inc. and any use of such marks by Klipsch Group, Inc. is under license. Other trademarks and trade names are those of their respective owners.”

Dolby Audio

Dolby Atmos Dolby, Dolby Audio, Dolby Atmos, and the double-D symbol are trademarks of Dolby Laboratories Licensing Corporation. Manufactured under license from Dolby Laboratories. Confidential unpublished works. Copyright © 1992–2020 Dolby Laboratories.

All rights reserved.

HDMI™ HDMI, High-Definition Multimedia Interface, and the HDMI logo are trademarks or registered trademarks of HDMI Licensing, Administrator in the United States and/or other countries.

Klipsch®
KEEPERS OF THE SOUND

3502 WOODVIEW TRACE, INDIANAPOLIS, IN, USA


KLIPSCH.COM

©2023, Klipsch Group, Inc. Klipsch Group, Inc. is a wholly-owned subsidiary of Vox International Corporation. Klipsch and Keepers of the Sound are trademarks of Klipsch Group, Inc., registered in the United States and other countries. The Bluetooth® word mark is a registered trademark owned by Bluetooth SIG, Inc. and any use of such mark by


Klipsch Group, Inc. is under license.

V00 – 231120

Documents / Resources

	Klipsch Flexus SURR 100 Onkyo Powered Flexus Soundbar System [pdf] User Manual Flexus SURR 100 Onkyo Powered Flexus Soundbar System, Flexus SURR 100, Onkyo Power ed Flexus Soundbar System, Powered Flexus Soundbar System, Flexus Soundbar System, So undbar System
---	--

References

-  [Speakers, Headphones, and Premium Home Audio | Klipsch](#)
- [User Manual](#)

[Manuals+](#), [Privacy Policy](#)

This website is an independent publication and is neither affiliated with nor endorsed by any of the trademark owners. The "Bluetooth®" word mark and logos are registered trademarks owned by Bluetooth SIG, Inc. The "Wi-Fi®" word mark and logos are registered trademarks owned by the Wi-Fi Alliance. Any use of these marks on this website does not imply any affiliation with or endorsement.