

Klipsch FLEXUS CORE 100 Sound Bar



# Klipsch FLEXUS CORE 100 Sound Bar User Guide

[Home](#) » [Klipsch](#) » Klipsch FLEXUS CORE 100 Sound Bar User Guide 

## Contents

- 1 Klipsch FLEXUS CORE 100 Sound Bar
- 2 Product Information
- 3 Product Usage Instructions
- 4 Frequently Asked Questions
- 5 KLIPSCH CONNECT PLUS APP
- 6 ADD TO YOUR SYSTEM
- 7 INSIDE
- 8 SOUND BAR CONTROLS
- 9 SOUND BAR INPUT/OUTPUT
- 10 DIRECT WALL MOUNTING
- 11 CONNECTING TO POWER
- 12 CONNECTING WIRED SUBWOOFER
- 13 LED BRIGHTNESS
- 14 FLEXUS REMOTE 100
- 15 CONNECTIONS – HDMI eARC
- 16 CONNECTIONS – DIGITAL OPTICAL
- 17 CONNECTIONS – EXTERNAL HDMI SOURCE THROUGH TV
- 18 CONNECTIONS – EXTERNAL AUDIO VIA DIGITAL OPTICAL
- 19 TURN OFF TV SPEAKERS
- 20 ADJUSTING BASS LEVEL
- 21 NIGHT MODE
- 22 DIALOGUE MODE
- 23 BLUETOOTH® PAIRING MODE
- 24 FACTORY RESET
- 25 DECODING AND PLAYBACK MODES
- 26 LED DISPLAY
- 27 POWER CONSUMPTION
- 28 IMPORTANT SAFETY INSTRUCTIONS!
- 29 FCC AND CANADA EMC COMPLIANCE INFORMATION
- 30 WIRELESS TRANSMITTER COMPLIANCE INFORMATION
- 31 SOUND BAR WARRANTY –
- 32 Documents / Resources
  - 32.1 References



## Klipsch FLEXUS CORE 100 Sound Bar



### Product Information

#### Specifications

- Product Name: Flexus Core 100 Sound Bar
- Wireless Connectivity: Klipsch Connect Plus App
- Additional Components: Subwoofers (SUB 100, SUB 200), Surround Speakers (SURRE 100, SURRE 200)
- Input/Output: HDMI eARC, Optical, USB-C, Sub Out
- Control Features: Virtual Remote, Equalizer, Channel Control

### Product Usage Instructions

#### Add to Your System

The Flexus Sound System is designed to be expandable. You can add up to two wireless subwoofers and two wireless surround speakers to enhance your home theater experience.

For detailed instructions on expanding your system, visit [klipsch.com/flexus-get-started](https://klipsch.com/flexus-get-started).

#### Inside the Package

- Soundbar
- Wall-Mount Template
- Wall Mount Brackets (2)
- Wrench
- Power Cord

- HDMI Cable
- Flexus Remote
- Wall Mount Screws (2)

## **Sound Bar Controls**

- On/Off
- Volume Up/Down
- Source Select (Toggle)

## **Connecting to Power**

1. Ensure the sound bar is unplugged.
2. Connect the power cord to the sound bar and a power outlet.
3. Turn on the sound bar using the On/Off button.

## **Connecting Wired Subwoofer**

If using the Flexus Sub 100 or Sub 200:

- Connect the Sub Out port of the sound bar to the Sub In port of the subwoofer.
- Alternatively, connect the LFE Out of the sound bar to the LFE In of the subwoofer.
- Adjust the crossover/low pass settings for optimal sound output.

## **LED Brightness Settings**

You can adjust the LED brightness of the sound bar by following the provided steps in the manual.

## **Flexus Remote 100 Functions**

- On/Off
- Source Select (HDMI eARC, Optical)
- Play/Pause
- Surround Level Adjustment
- Bass Level Adjustment
- Sound Mode Selection (Movie/Music)
- Dialog Boost Control
- Night Mode Activation/Deactivation

## **Frequently Asked Questions**

### **Q: How do I pair additional wireless subwoofers and surround speakers?**

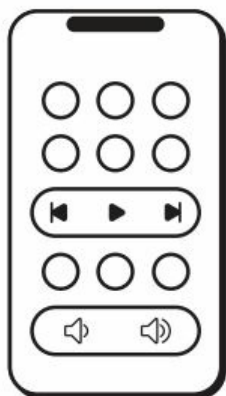
A: To pair additional speakers, refer to the user manual or visit [klipsch.com/flexus-get-started](https://www.klipsch.com/flexus-get-started) for detailed instructions on the pairing process.

### Q: Can I use the Flexus Core 100 with external HDMI sources?

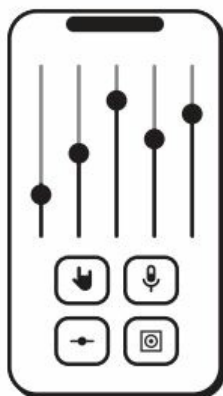
A: Yes, you can connect external HDMI sources like streaming boxes, Blu-Ray players, gaming consoles through your TV to utilize the sound bar for audio output.

### KLIPSCH CONNECT PLUS APP

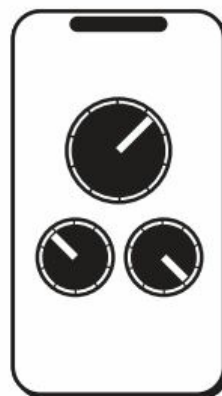
Scan the QR code for enhanced functionality.



VIRTUAL REMOTE



EQUALIZER



CHANNEL CONTROL



SUPPORT

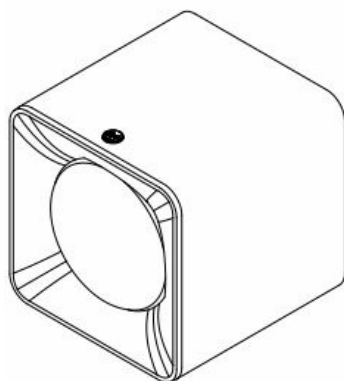
- Virtual Remote
- Equalizer
- Channel Control
- Support

### ADD TO YOUR SYSTEM

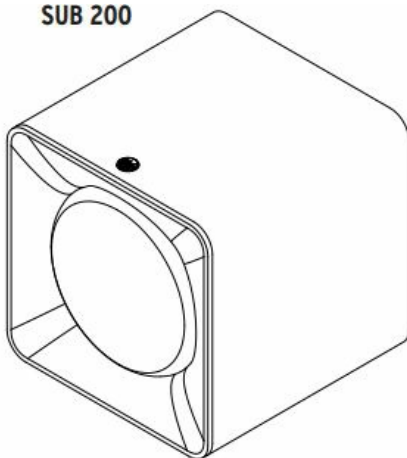
Flexus Sound System is built to grow with you. Add up to two wireless subwoofers and two wireless surround speakers to create a home theater.

For more information, please visit: [klipsch.com/flexus-get-started](https://klipsch.com/flexus-get-started)

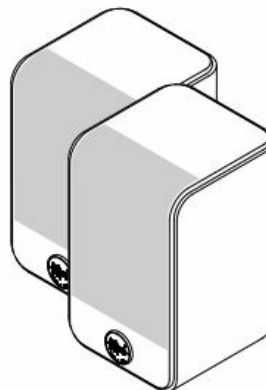
SUB 100



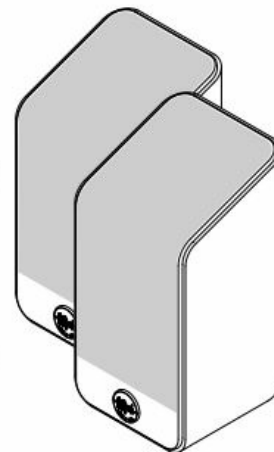
SUB 200



SURR 100



SURR 200



### INSIDE



**Sound Bar**



**Wall-Mount Template**



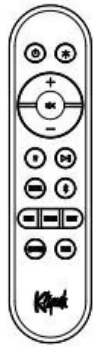
**Wall Mount Brackets (2)**



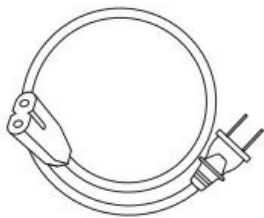
**Wrench**



**Wall Mount  
Screws (2)**



**Flexus  
Remote  
100**



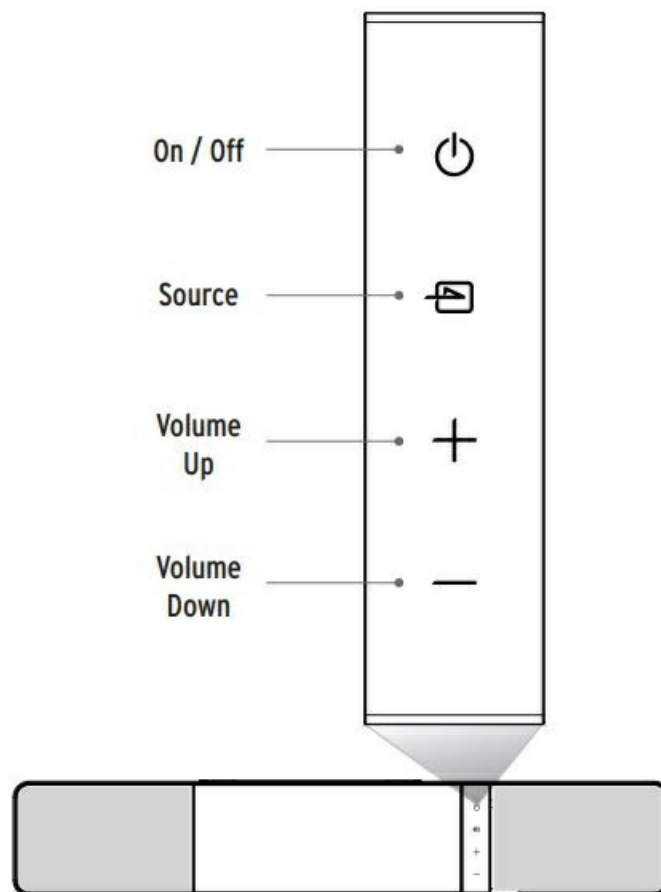
**Power Cord**



**HDMI Cable**

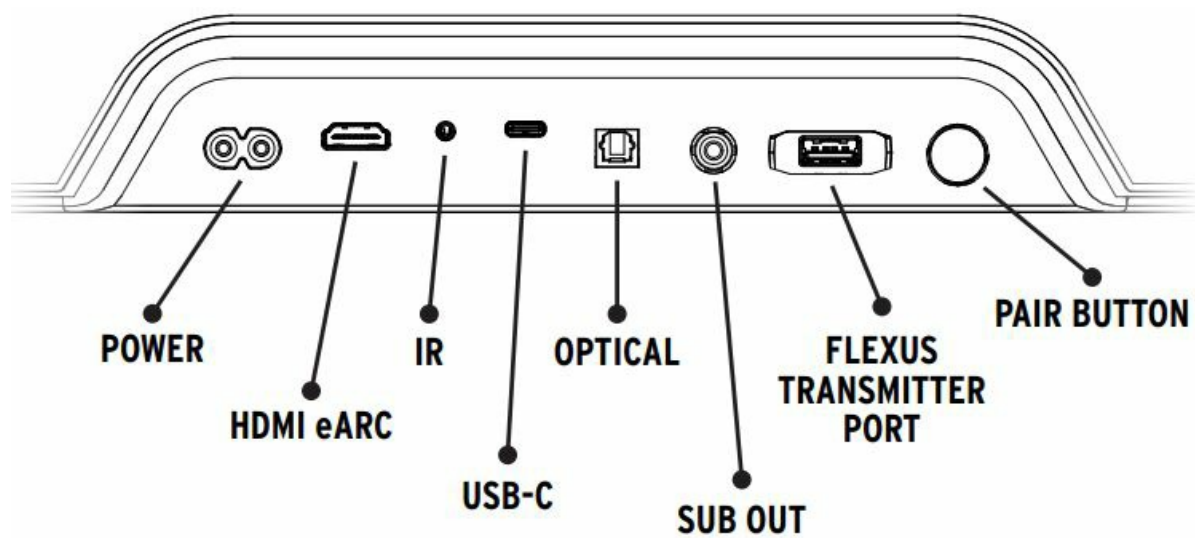
- Sound Bar
- Wall-Mount Template
- Remote
- Wall Mount Brackets
- Wall Mount Screws
- Power Cord
- HDMI Cable
- Wrench

## **SOUND BAR CONTROLS**



- On / Off
- Source Select (Toggle)
- Volume Down
- Volume Up

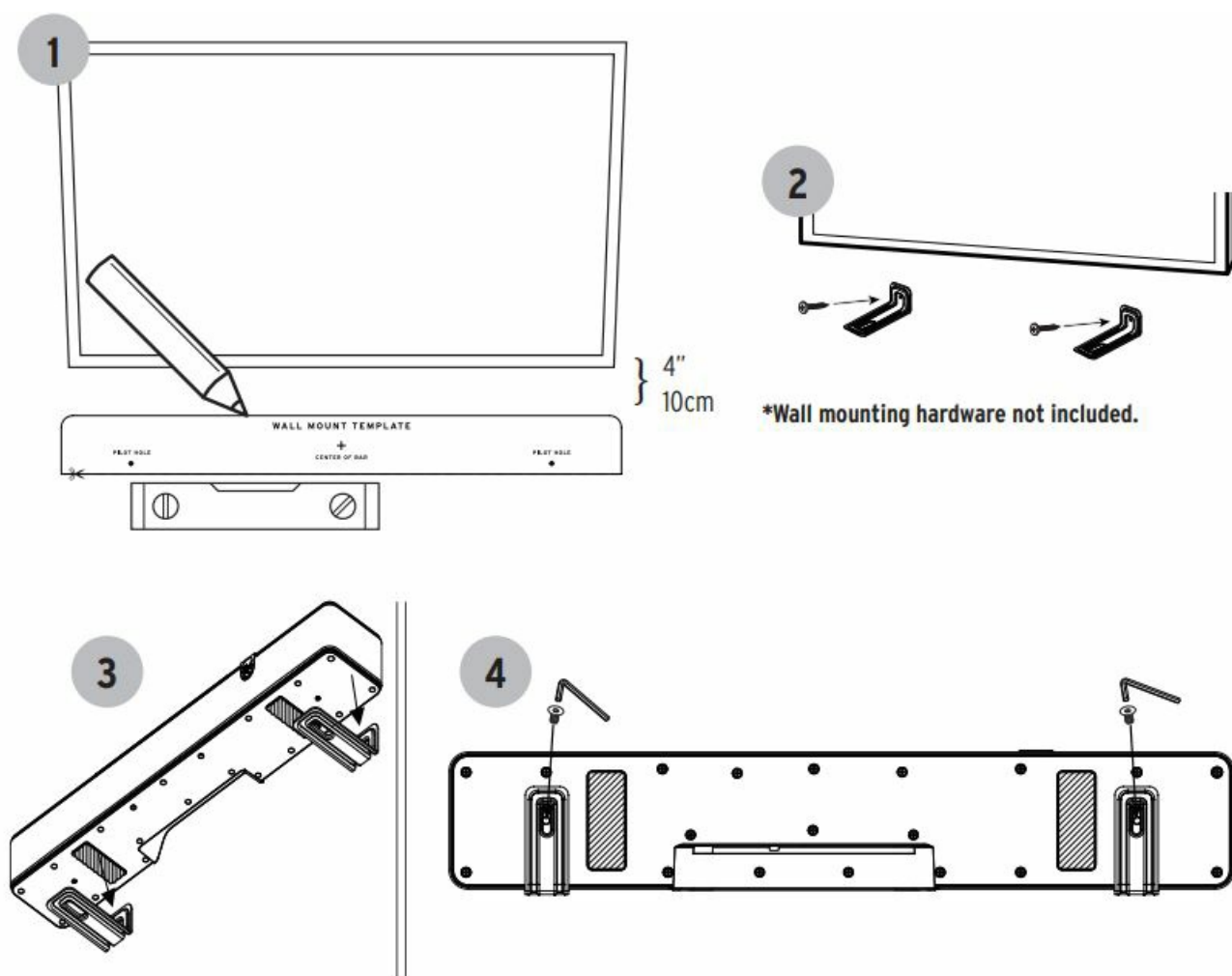
## SOUND BAR INPUT/OUTPUT



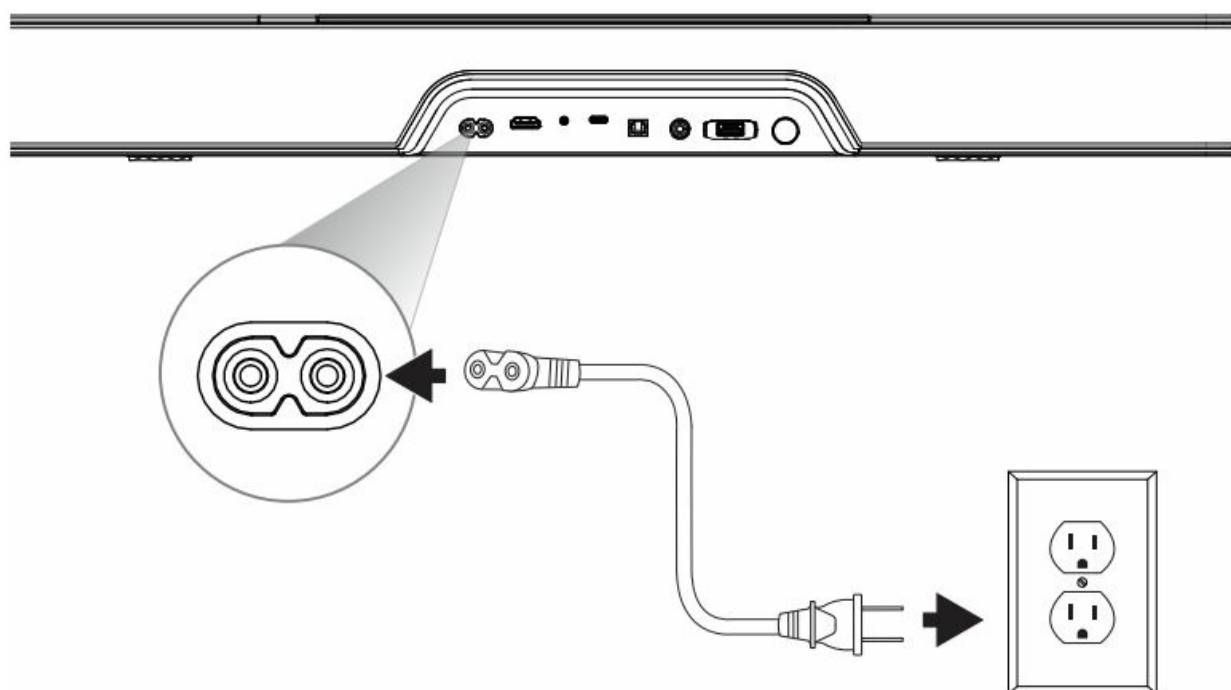
- Power
- IR (Impulse Response)
- Optical
- Sub Out
- Flexus Transmitter Port

- Pair Button

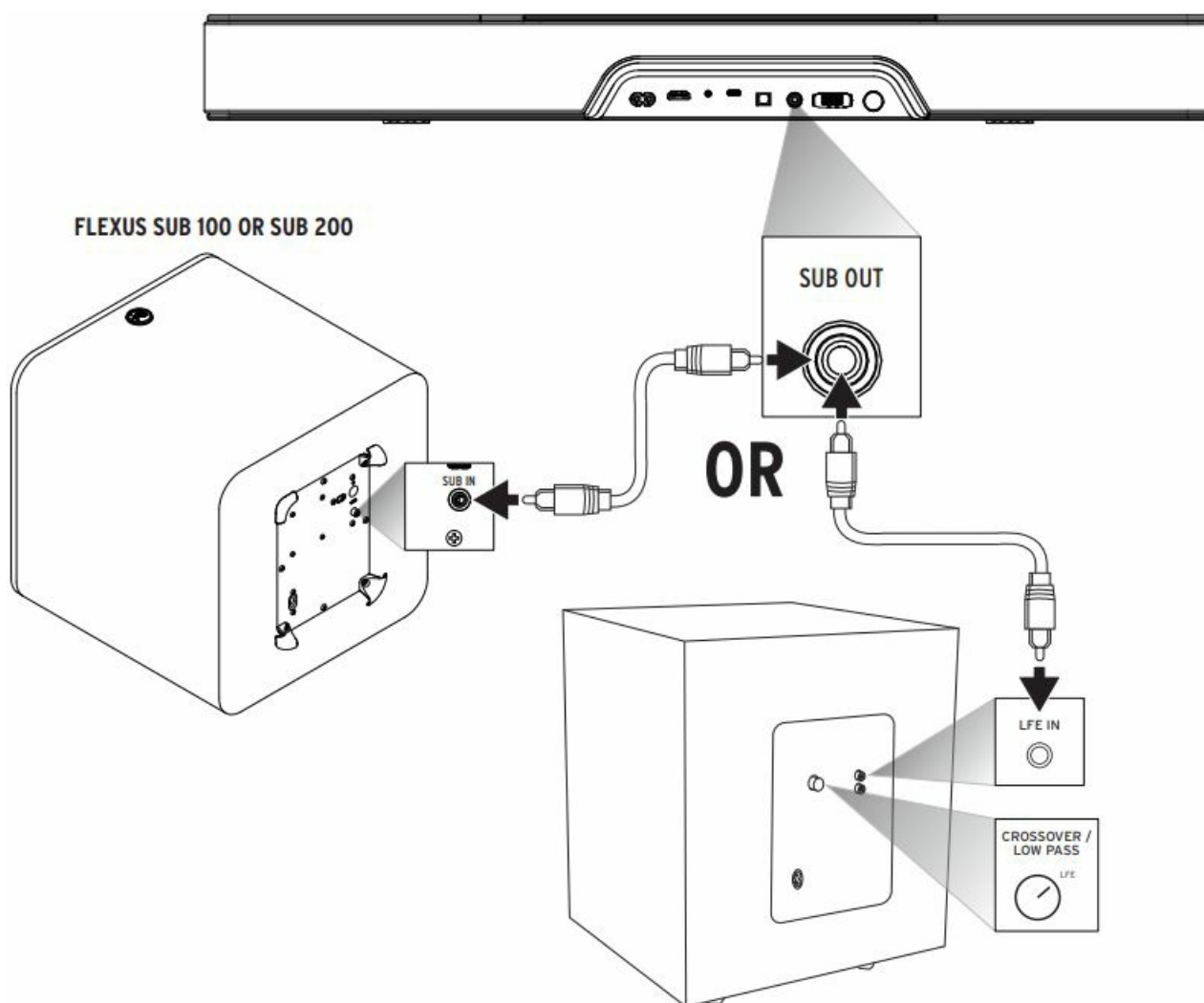
## DIRECT WALL MOUNTING



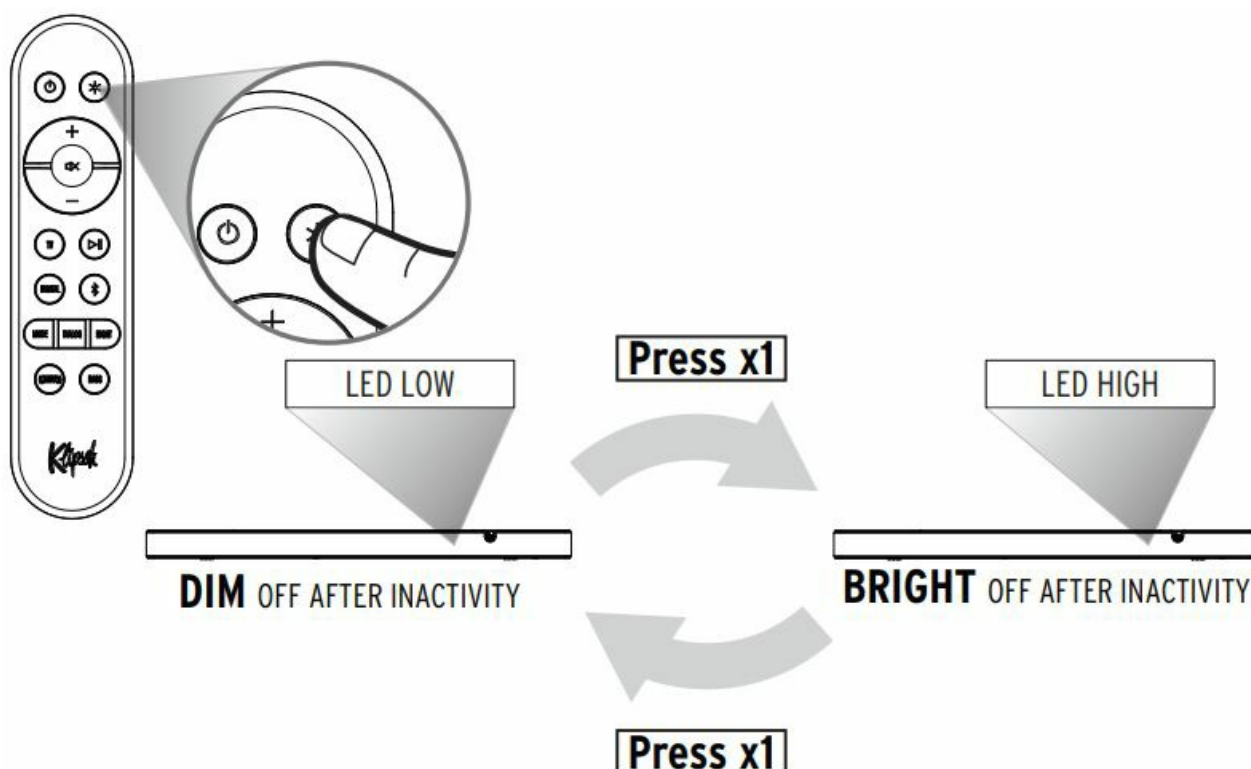
## CONNECTING TO POWER



## CONNECTING WIRED SUBWOOFER



## LED BRIGHTNESS





- Press x1
- BRIGHT
- DIM
- OFF AFTER INACTIVITY

### FLEXUS REMOTE 100

On/Off

LEDs High/Low

Source Select  
Selects HDMI eARC Input

Play/Pause

Source Select  
Selects Optical Input

*Bluetooth®* Source Select  
Long press to enter Bluetooth pairing mode

Surround Level  
Cycles available surround channels.

Bass Level  
Adjusts Bass equalizer value.

+ Increase Volume  
 Mute  
 - Decrease Volume

1

2

3

MODE

DIALOG

NIGHT

1

**Sound Mode**  
Cycles through available Sound Modes. Movie/Music

2

**Dialog Boost**  
Toggles through Off, Low, Medium, High

3

**Night Mode**  
Enables/disables Night Mode.

**Advanced Functionality**

**(Long Press):**  
Sets Dialog Boost to OFF.

**(Long Press):**  
Exits Surround adjust mode.

+

**(Long Press):**  
Enters remote pairing mode.

### CONNECTIONS – HDMI eARC

## TV REAR PANEL



OPTICAL



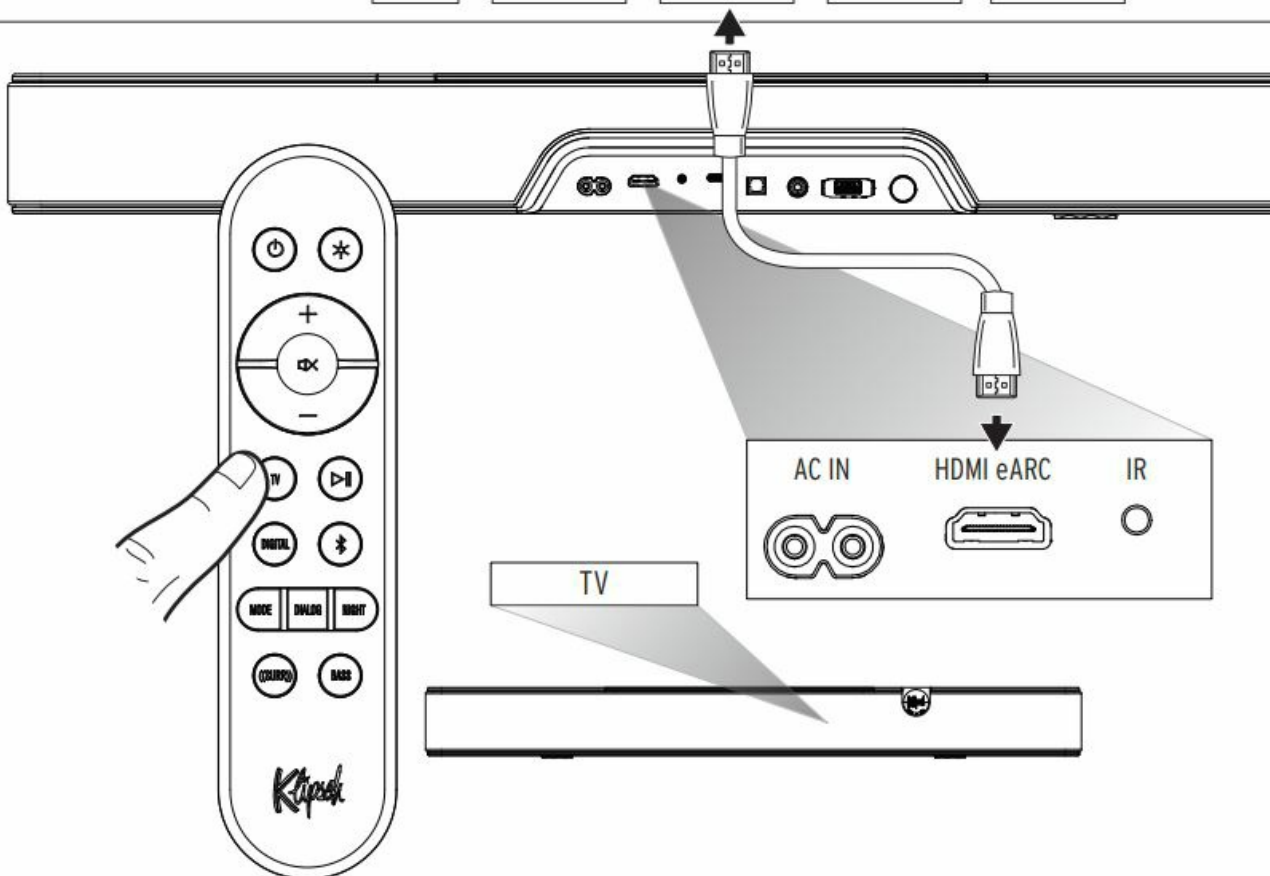
HDMI eARC



HDMI 1



HDMI 2



## CONNECTIONS – DIGITAL OPTICAL

### TV REAR PANEL



OPTICAL



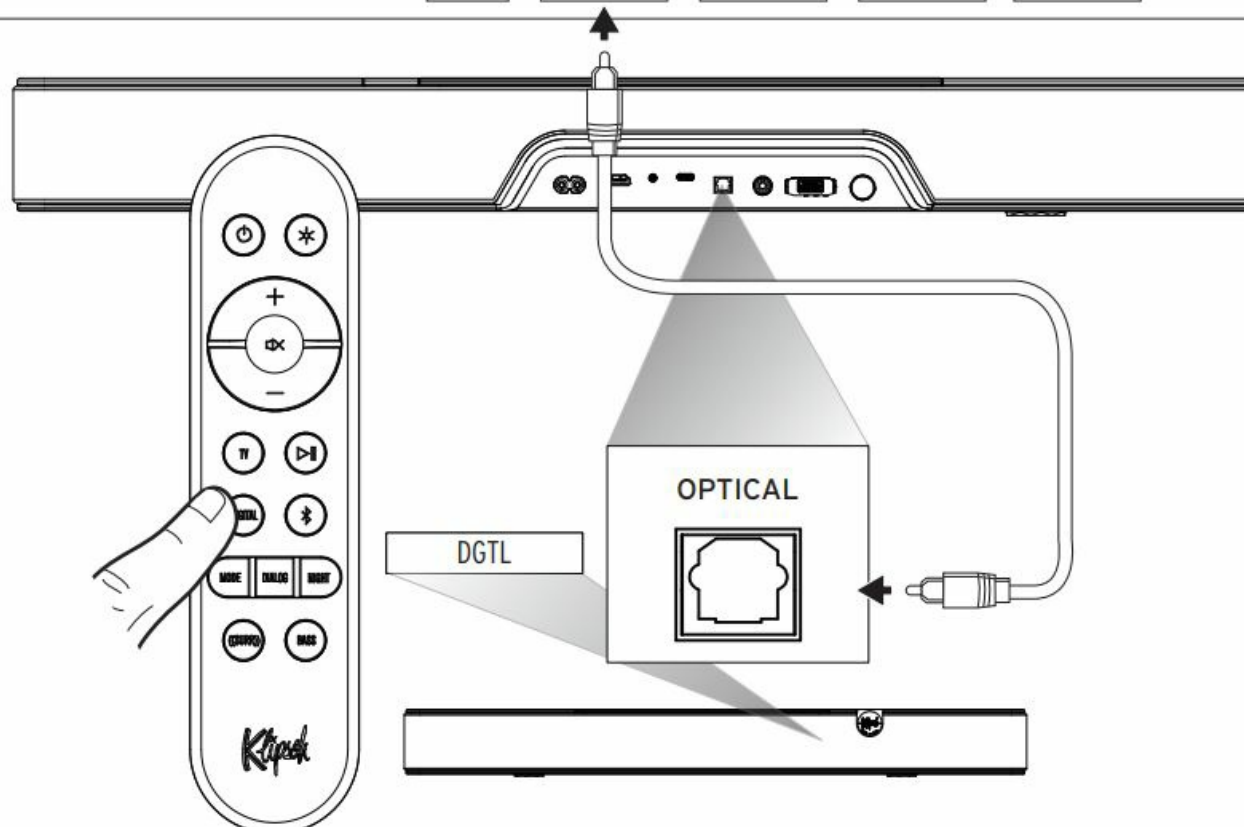
HDMI eARC



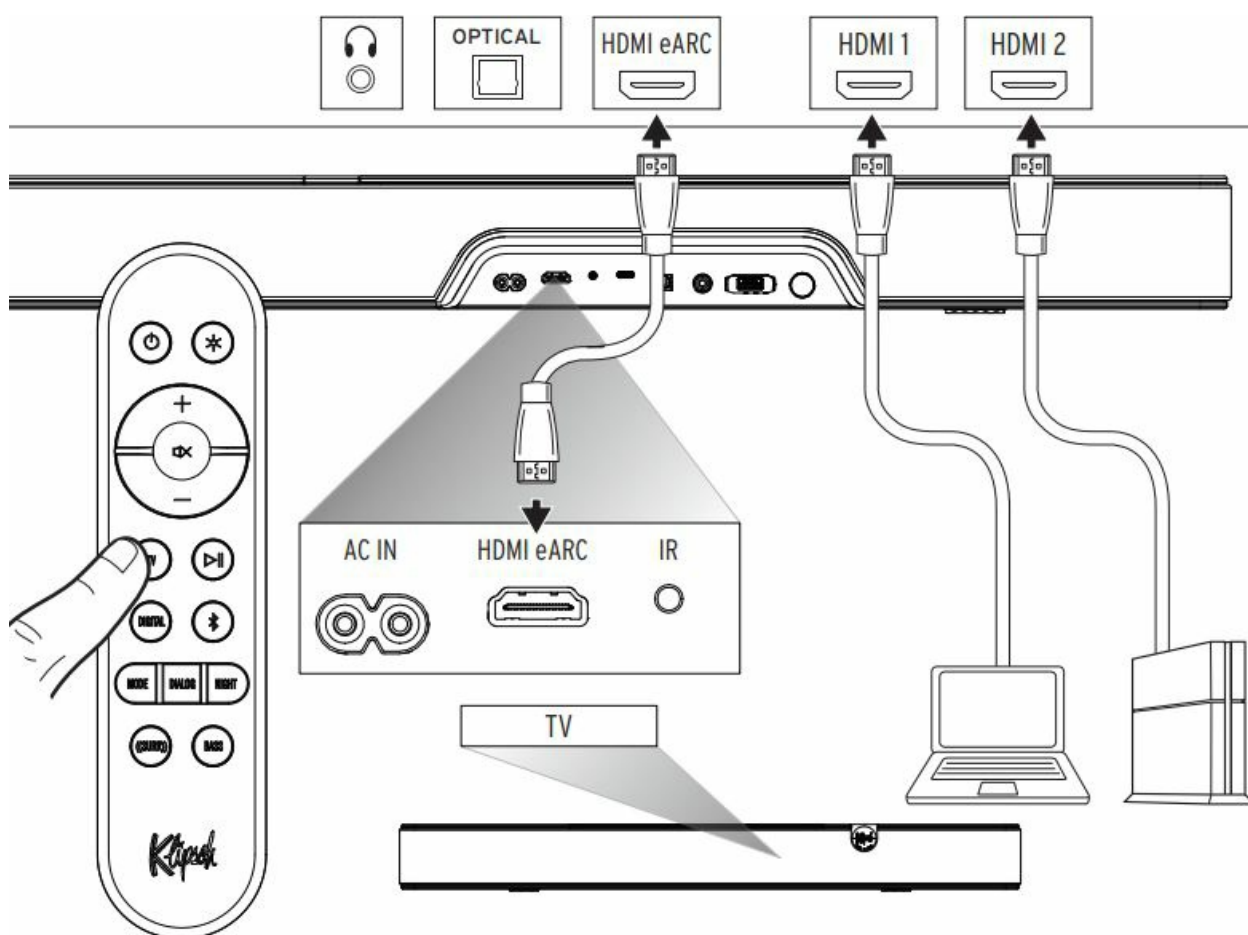
HDMI 1



HDMI 2



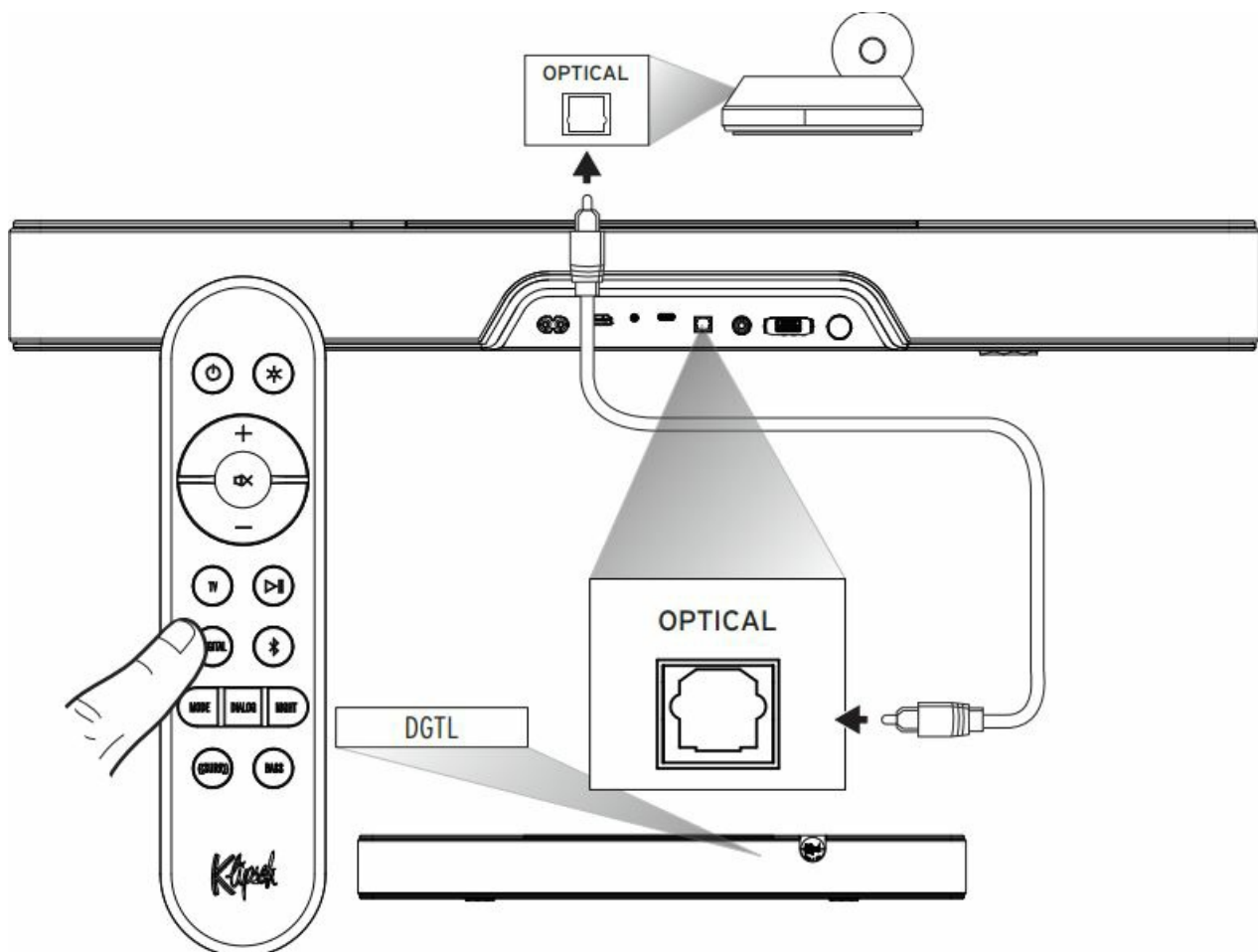
## CONNECTIONS – EXTERNAL HDMI SOURCE THROUGH TV



Use this connection method when using external HDMI sources (Streaming boxes, Blu-Ray Players, gaming consoles, etc) to play audio/video content, and want to use TV as the source switch.

Note: This connection method will only support Dolby Atmos playback if your TV supports HDMI eARC. Check your TV owner's manual for compatibility. Dolby Atmos playback also requires Dolby Atmos content and Dolby Atmos compatible playback hardware.

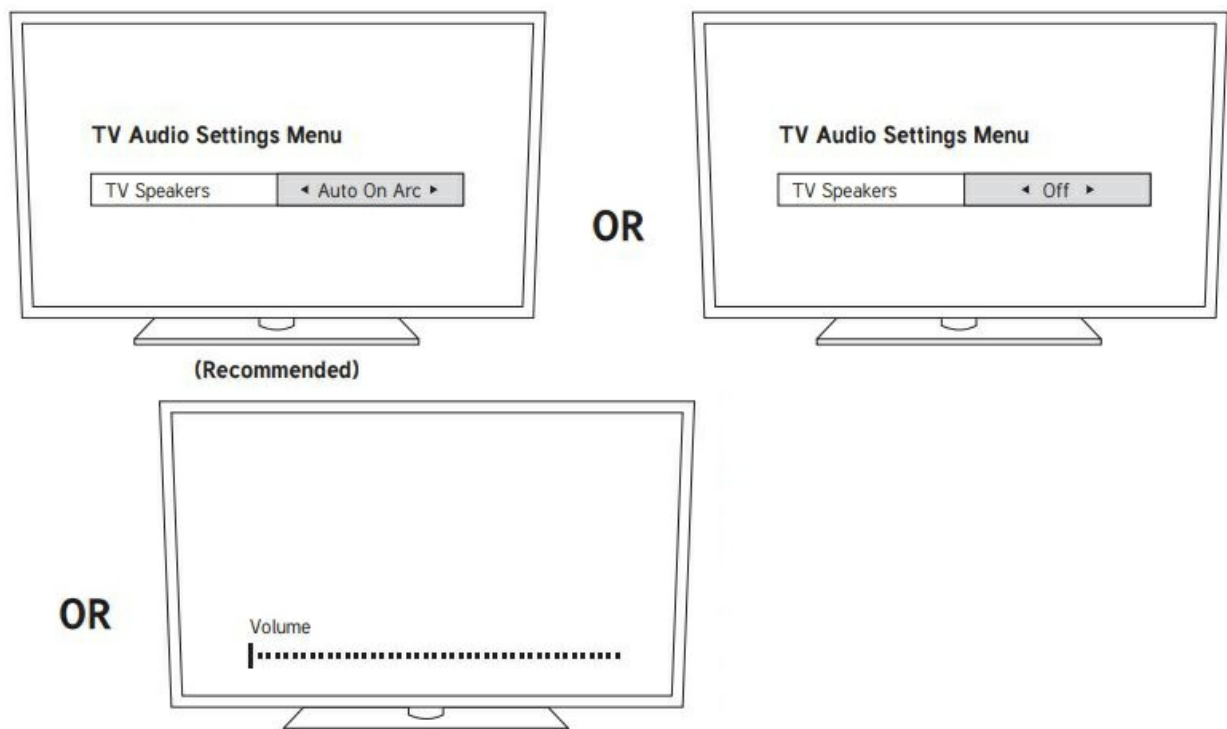
## CONNECTIONS – EXTERNAL AUDIO VIA DIGITAL OPTICAL



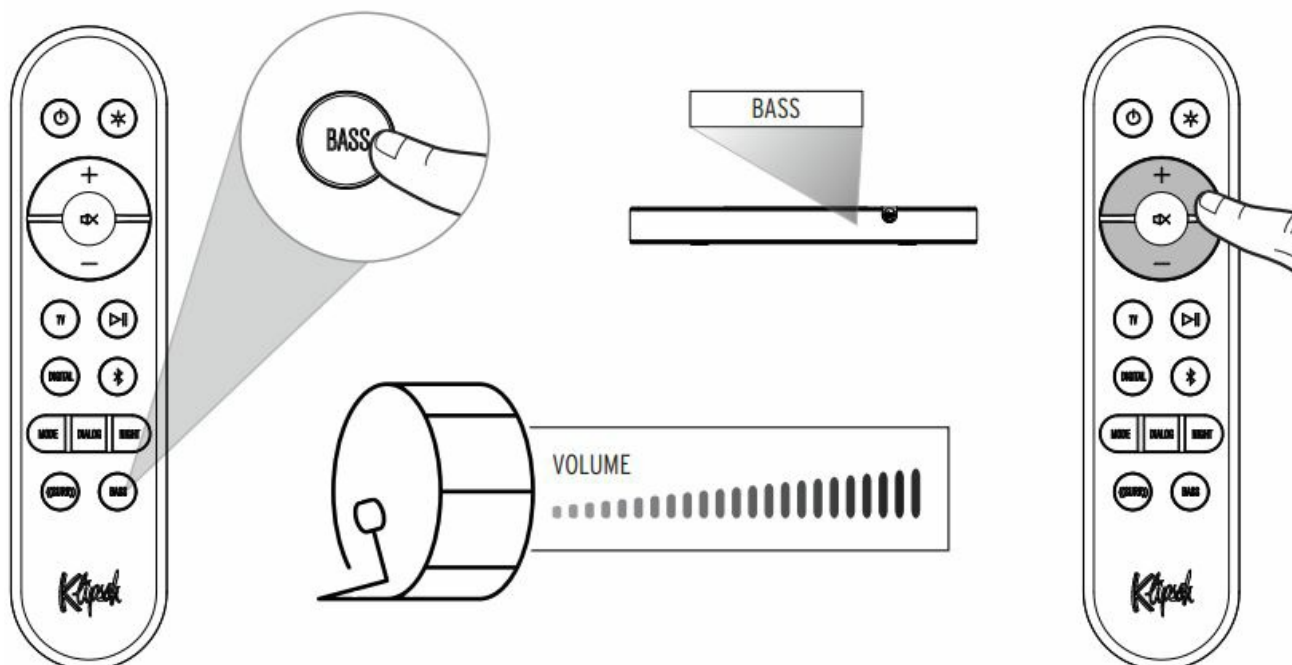
Use this connection method when connecting audio sources with a digital optical output, such as CD Players, PC audio servers, or streaming audio players.

**Note:** Digital connection only supports Dolby Audio-Dolby Digital Decoding, not Dolby Atmos.

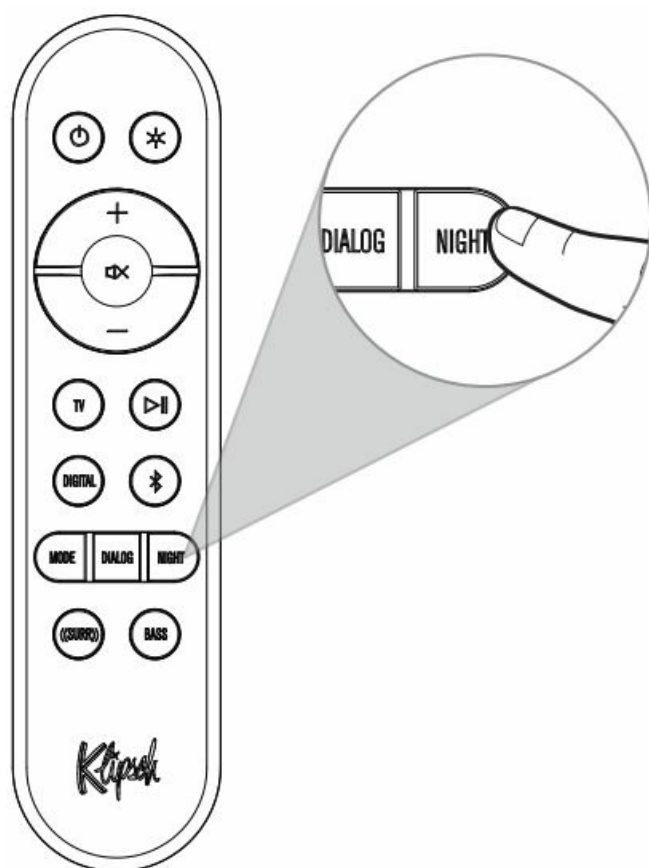
## TURN OFF TV SPEAKERS



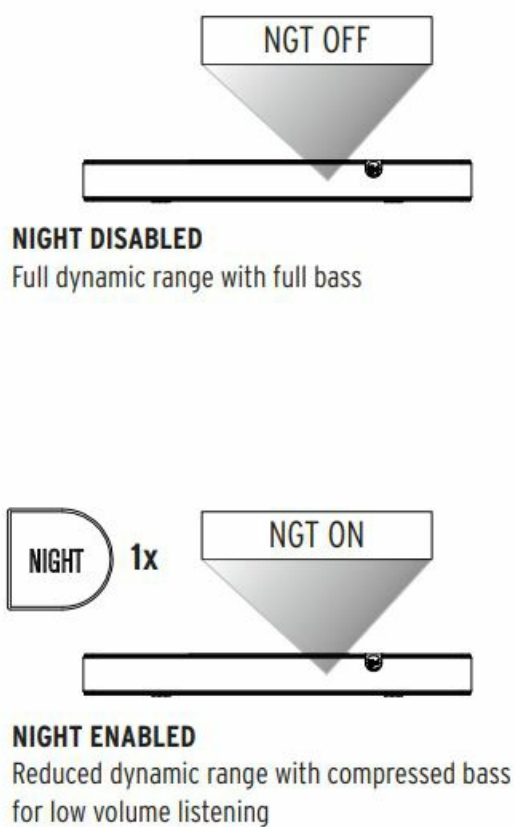
## ADJUSTING BASS LEVEL

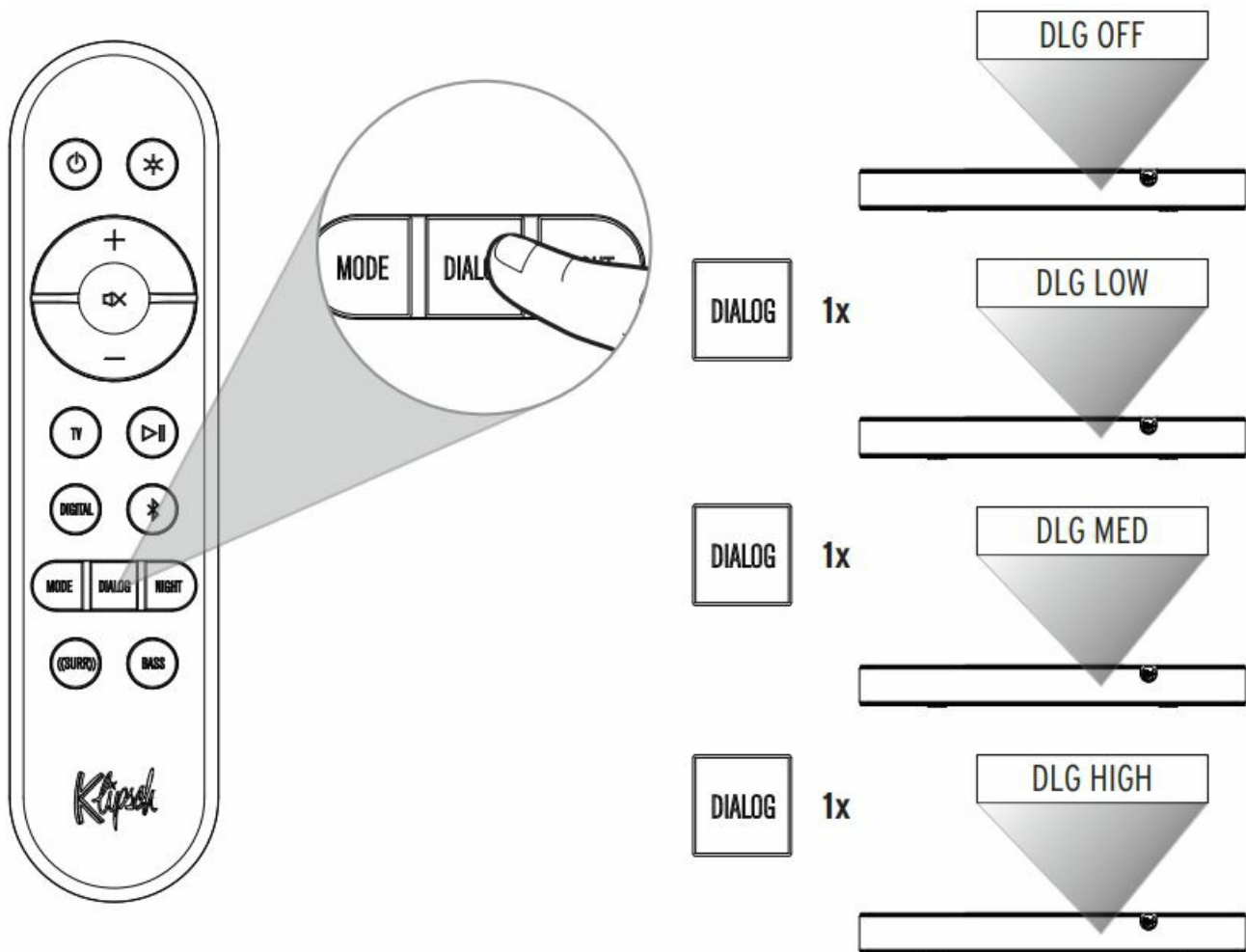


## NIGHT MODE



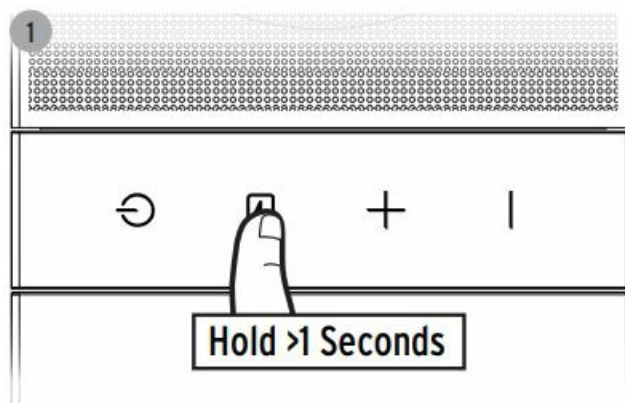
## DIALOGUE MODE





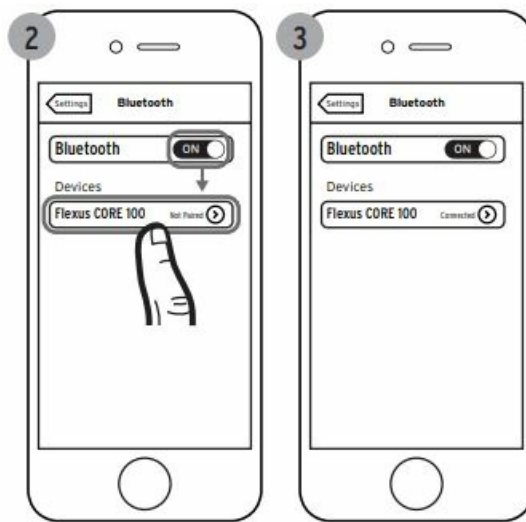
## BLUETOOTH® PAIRING MODE

Hold >1 Seconds (Flexus Core)



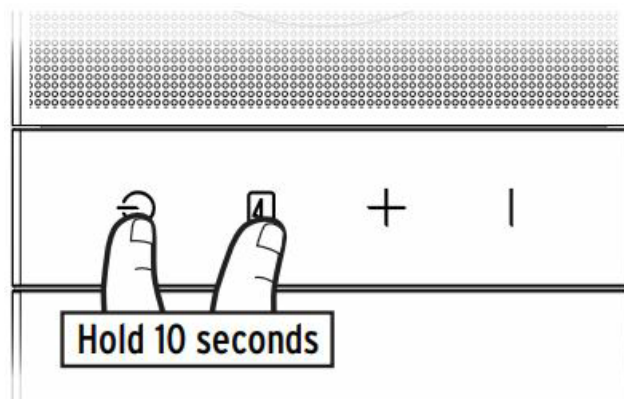
Example only. Your device may differ.





## FACTORY RESET

Hold 10 Seconds



Clears Bluetooth® pairing history and user programmed IR commands

## DECODING AND PLAYBACK MODES

<b>INCOMING DIGITAL AUDIO SIGNALS THE FLEXUS CORE 100 WILL DECODE</b>	PCM
	LPCM Up to 8 Channels
	Dolby Audio-Dolby Digital (2.0, 5.1, Etc.)
	Dolby Audio-Dolby Digital Plus (2.0, 5.1, 7.1, Etc.)
	Dolby TrueHD
	Dolby Atmos

Flexus Core 100 comes equipped with several user selectable playback modes. Depending on which playback mode the user has selected, the system will decode the surround sound signal. The following chart shows which playback modes will result in which type of surround sound from the system, along with the recommended uses for each mode. For more information on decoding and TV compatibility, visit [support.klipsch.com](https://support.klipsch.com)

USER SELECTED INPUT MODE	OUTPUT FORMAT	RECOMMENDED FOR:
MOVIE (DEFAULT)	Dolby Atmos mixed to 5.1.4	The most immersive and complete system tuning for everyday use. Perfect for shows and movies, Movie mode up mixes all signals into all available channels and virtualizes a wide soundstage. Movie mode boosts surround effects and increases dialog clarity.
MUSIC	Dolby Atmos mixed to 5.1.4	Optimized to keep music sounding like the artist intended, Music mode disables virtualization, dialog enhancement, and boosted surround experience while maintaining upmixing stereo sources to all available channels.

## LED DISPLAY

	DISPLAY	BAR STATUS
INPUTS	BT	Bluetooth Input Selected
	DIGITAL	Digital (Optical) input Selected
	TV	HDMI-eARC input Selected
	USB	USB Thumb Drive Input
SOUND MODES	MOVIE (Default)	Movie Mode ON
	MUSIC	Music Mode ON
DIALOG MODE	DLG OFF	Dialog Boost Off
	DLG LOW	Dialog Boost Low
	DLG MED	Dialog Boost Medium
	DLG HIGH	Dialog Boost High
NIGHT MODE	NGT OFF	Night Mode OFF
	NGT ON	Night Mode ON



	DISPLAY	BAR STATUS
LEVEL ADJUST	[SOURCE] XX	System Volume Setting [0] – [50]
	MUTE	System Muted / Volume Set To Minimum
	[SOURCE] MAX	System Volume Set To Max
	BASS [XX]	Bass equalizer volume [-6] – [+6]
CEC TOGGLE	CEC [XXX]	CEC Protocol Turned [On] or [Off]
DECODING	DOLBY SURROUND	Dolby Audio (supporting Dolby Digital, Dolby Digital Plus, Dolby TrueHD)
	DOLBY ATMOS	Dolby Atmos Input
	PCM	PCM or LPCM Input
OTHER	BT PAIRING	Pairing Bluetooth
	BT PAIRED	Bluetooth Paired
	LED HI	LED high brightness
	LED LOW	LED low brightness

## POWER CONSUMPTION

INFORMATION OF POWER CONSUMPTION	
STANDBY MODE	Power consumption is lower than 0.5W at this mode.
BLUETOOTH MODE	In this mode, when there is no signal output, the idle power consumption is lower than 0.5W after 15 minutes.
HDMI MODE	In this mode, when there is no signal output, the idle power consumption is lower than 0.5W after 15 minutes.
OPTICAL MODE	In this mode, when there is no signal output, the idle power consumption is lower than 0.5W after 15 minutes.
USB MODE	In this mode, when there is no signal output, the idle power consumption is lower than 0.5W after 15 minutes.



“The Bluetooth® word mark and logos are registered trademarks owned by the Bluetooth SIG, Inc. and any use of such marks by Klipsch Group, Inc. is under license. Other trademarks and trade names are those of their respective owners.”



Dolby, Dolby Audio, Dolby Atmos, and the double-D symbol are registered trademarks of Dolby Laboratories Licensing Corporation. Manufactured under license from Dolby Laboratories. Confidential unpublished works. Copyright © 2012-2021 Dolby Laboratories. All rights reserved.



- The Adopted Trademarks HDMI, HDMI High-Definition Multimedia Interface, HDMI trade dress and the HDMI logos are trademarks or registered trademarks of HDMI Licensing Administrator, Inc. in the United States and other countries.

## **IMPORTANT SAFETY INSTRUCTIONS!**

1. READ these instructions.
2. KEEP these instructions.
3. HEED all warnings.
4. FOLLOW all instructions.
5. DO NOT use this apparatus near water.
6. CLEAN ONLY with dry cloth.
7. DO NOT block any ventilation openings. Install in accordance with the manufacturer's instructions.
8. DO NOT install near any heat sources such as radiators, heat registers, stoves, or other apparatus (including amplifiers) that produce heat.
9. DO NOT defeat the safety purpose of the polarized or grounding type plug. A polarized plug has two blades with one wider than the other. A grounding type plug has two blades and a third grounding prong. The wider blade or the third prong are provided for your safety. If the provided plug does not fit into your outlet, consult an electrician for replacement of the obsolete outlet.
10. PROTECT the power cord from being walked on or pinched, particularly at plugs, convenience receptacles, and the point where they exit from the apparatus.
11. ONLY USE attachments/accessories specified by the manufacturer.
12. USE ONLY with the cart, stand, tripod, bracket, or table specified by the manufacturer, or sold with the apparatus. When a cart is used, use caution when moving the cart/apparatus combination to avoid injury from tip-over.
13. UNPLUG this apparatus during lightning storms or when unused for long periods of time.
14. REFER all servicing to qualified service personnel. Servicing is required when the apparatus has been damaged in any way, such as power-supply cord or plug is damaged, liquid has been spilled or objects have fallen into the apparatus, the apparatus has been exposed to rain or moisture, does not operate normally, or has been dropped.
15. DO NOT expose this apparatus to dripping or splashing and ensure that no objects filled with liquids, such as vases, are placed on the apparatus.
16. To completely disconnect this apparatus from the AC Mains, disconnect the power supply cord plug from the AC receptacle.
17. The mains plug/appliance coupler is used as disconnect device, the disconnect device shall remain readily operable.
18. DO NOT overload wall outlets or extension cords beyond their rated capacity as this can cause electric shock or fire.
19. The equipment shall be used at maximum 113°F / 45°C ambient temperature.
  - The exclamation point, within an equilateral triangle, is intended to alert the user to the presence of important operating and maintenance (servicing) instructions in the literature accompanying the product.
  - The lightning flash with arrowhead symbol within an equilateral triangle is intended to alert the user to the presence of uninsulated "dangerous voltage" within the product's enclosure that may be of sufficient

magnitude to constitute a risk of electrical shock to persons.

- **WARNING:** To reduce the risk of fire or electrical shock, do not expose this apparatus to rain or moisture.
- **WARNING:** To prevent injury, this apparatus must be securely attached to the floor/wall in accordance with the installation instruction.
- **WARNING:** No naked flame sources – such as candles – should be placed on the product.
- **WARNING:** This equipment is a Class II or double insulated electrical appliance. It has been designed in such a way that it does not require a safety connection to electrical earth.
- **WARNING:** Do not place batteries in mouth or ingest. Chemical burn hazard. Keep new and used batteries out of reach of children and pets. If swallowed, it can cause severe internal burns in just 2 hours and can lead to death.
- If you think batteries might have been swallowed or placed inside any part of the body, seek immediate medical attention.
- **WARNING:** If battery compartment does not close securely, stop using the product and keep it away from children and pets.
- **WARNING:** Do not handle leaking or damaged Lithium batteries.
- **WARNING:** Risk of leakage. Only use the specified type of batteries. Never mix new and used batteries. Observe correct polarity. Remove batteries from products that are not in use for extended periods of time. Store batteries in a dry place.
- **WARNING:** Batteries (battery pack or batteries installed) shall not be exposed to excessive heat such as sunshine, fire or the like.
- **WARNING:** Danger of explosion if battery is incorrectly replaced. Replace only with the same or equivalent type.
- **WARNING:** Do not recharge non-rechargeable batteries.
- **WARNING:** Avoid exposure to extreme heat or cold.

Please dispose of any used batteries properly, following any local regulations. Do not incinerate.

#### CAUTION



- **WARNING:** Do Not Open! Risk of Electrical Shock. Voltages in this equipment are hazardous to life. No user-serviceable parts inside. Refer all servicing to qualified service personnel.
- Place the equipment near a main power supply outlet and make sure that you can easily access the power breaker switch.
- **WARNING:** This product is intended to be operated ONLY from the AC Voltages listed on the back panel or included power supply of the product. Operation from other voltages other than those indicated may cause irreversible damage to the product and void the products warranty. The use of AC Plug Adapters is cautioned because it can allow the product to be plugged into voltages in which the product was not designed to operate. If the product is equipped with a detachable power cord, use only the type provided with your product or by your local distributor and/or retailer. If you are unsure of the correct operational voltage, please contact your local distributor and/or retailer.

## EU COMPLIANCE INFORMATION

Eligible to bear the CE mark; Conforms to European Union Low Voltage Directive 2014/35/EU; European Union EMC Directive 2014/30/EU; European Union Restriction of Hazardous Substances Recast (RoHS2) Directive 2011/65/EU; European Union WEEE Directive 2012/19/EU; European Union Eco-Design Directive 2009/125/EC; European Union Registration, Evaluation, Authorization and Restriction of Chemicals (REACH) Directive 2006/121/EC; European Union Radio Equipment Directive (RED) 2014/53/EU.

This product contains batteries that are covered under the 2006/66/EC European Directive, which cannot be disposed of with normal household waste. Please follow local regulations.

You may obtain a free copy of the Declaration of Conformity by contacting your dealer, distributor, or Klipsch Group, Inc.'s worldwide headquarters. Contact information can be found here: <http://www.klipsch.com/Contact-Us>

## WEEE NOTICE

Note: This mark applies only to countries within the European Union (EU) and Norway.

This appliance is labeled in accordance with European Directive 2012/19/EU concerning waste of electrical and electronic equipment (WEEE). This label indicates that this product should not be disposed of with household waste. It should be deposited at an appropriate facility to enable recovery and recycling.

## FCC AND CANADA EMC COMPLIANCE INFORMATION

This device complies with Part 15 of the FCC Rules. Operation is subject to the following two conditions:

1. This device may not cause harmful interference, and
2. This device must accept any interference received, including interference that may cause undesired operation.

**NOTE:** This equipment has been tested and found to comply with the limits for a Class B digital device, pursuant to part 15 of the FCC Rules. These limits are designed to provide reasonable protection against harmful interference in a residential installation. This equipment generates, uses and can radiate radio frequency energy and, if not installed and used in accordance with the instructions, may cause harmful interference to radio communications. However, there is no guarantee that interference will not occur in a particular installation. If this equipment does cause harmful interference to radio or television reception, which can be determined by turning the equipment off and on, the user is encouraged to try to correct the interference by one or more of the following measures:

- Reorient or relocate the receiving antenna.
- Increase the separation between the equipment and receiver.
- Connect the equipment into an outlet on a circuit different from that to which the receiver is connected.
- Consult the dealer or an experienced radio/TV technician for help.

Approved under the verification provision of FCC Part 15 as a Class B Digital Device.

Caution: Changes or modifications not expressly approved by the manufacturer could void the user's authority to operate this device.

Caution: To comply with the limits of the Class B digital device, pursuant to Part 15 of the FCC

Rules, this device is to comply with Class B limits. All peripherals must be shielded and grounded. Operation with non-certified peripherals or non-shielded cables may result in interference to radio or reception.

## WIRELESS TRANSMITTER COMPLIANCE INFORMATION

### Radiation Exposure Statement:

This equipment complies with FCC radiation exposure limits set forth for an uncontrolled environment. This equipment should be installed and operated with minimum distance 20cm between the radiator & your body.

**Industry Canada statement:**

This device complies with Industry Canada's licence-exempt RSSs. Operation is subject to the following two conditions:

1. This device may not cause interference; and
2. This device must accept any interference, including interference that may cause undesired operation of the device.

**Radiation Exposure Statement:**

This equipment complies with ISSED radiation exposure limits set forth for an uncontrolled environment. This equipment should be installed and operated with minimum distance 20cm between the radiator & your body.

**SOUND BAR WARRANTY –**

FLEXUS CORE 100, CORE 200, AND CORE 300

**WARRANTY – U.S.**

Klipsch Group, Inc., (KGI), 3502 Woodview Trace, Suite 200, Indianapolis, Indiana (USA) 46268, warrants to the original retail purchaser that this product will be free from defective materials and workmanship for two (2) years from the date of purchase, subject to the limitations below. This warranty period is not extended if we repair or replace the product. Except as limited below, if this product proves defective in either material or workmanship, KGI, at its option, will (a) repair the product, or (b) replace the product, at no charge for parts or labor. If the product model is no longer available and cannot be repaired effectively or replaced with an identical model, KGI at its sole option may replace the unit with a current model of equal or greater value. In some cases, modification to the mounting surface may be required where a new model is substituted. KGI assumes no responsibility or liability for such modification. To obtain a repair or replacement under the terms of this warranty, you must return the product to the dealer from which it was purchased with your original receipt. If return of the product to the dealer from which it was purchased is impossible, you must contact our warranty service number at 1-[800-554-7724](tel:800-554-7724) to arrange for return of the product to us or in-field destruction of the product at our option, as well as provision of your original receipt to us. Return, repair, and replacement shipping, liability, and cost is the responsibility of the original retail purchaser.

**Limitations:**

- This limited warranty does not cover failure of the product arising, in whole or in part, from improper installation, storage, transportation, misuse, abuse, accident, neglect, mishandling, unauthorized repair, modification, or wear from ordinary use or environmental deterioration.
- This limited warranty does not cover cosmetic damage, including paint damage, or consequential damage to other components or premises which may result for any reason from the failure of the product.
- This limited warranty is null and void for products not used in accordance with KGI's instructions.
- This limited warranty is null and void for products with altered or missing serial numbers and for products not purchased from Klipsch Group, Inc. or an authorized dealer (See: [www.klipsch.com/dealers](http://www.klipsch.com/dealers)).
- This limited warranty terminates if the original retail purchaser sells or otherwise transfers this product.
- This limited warranty is null and void for defects or damage caused by installation or repair performed by any person or entity other than a Klipsch authorized installer or dealer.

THIS WARRANTY GIVES YOU SPECIFIC LEGAL RIGHTS, AND YOU MAY ALSO HAVE OTHER RIGHTS WHICH VARY FROM STATE TO STATE, JURISDICTION TO JURISDICTION OR COUNTRY TO COUNTRY. ALL EXPRESS AND IMPLIED WARRANTIES FOR THE PRODUCT, INCLUDING BUT NOT LIMITED TO ANY IMPLIED WARRANTIES OF MERCHANTABILITY AND FITNESS FOR A PARTICULAR PURPOSE, ARE LIMITED IN TIME TO THE TERM OF THIS WARRANTY. SOME STATES, JURISDICTIONS OR COUNTRIES DO

NOT ALLOW THE EXCLUSION OF CERTAIN IMPLIED WARRANTIES OR CONDITIONS, OR LIMITATIONS ON HOW LONG AN IMPLIED WARRANTY OR CONDITION LASTS, SO THIS LIMITATION MAY NOT APPLY TO YOU. KGI'S RESPONSIBILITY FOR MALFUNCTIONS AND DEFECTS IN HARDWARE IS LIMITED TO REPLACEMENT OR REPAIR AS SET FORTH IN THIS WARRANTY STATEMENT. KGI DOES NOT ACCEPT LIABILITY FOR SPECIAL, PUNITIVE, CONSEQUENTIAL OR INCIDENTAL DAMAGES OR LOSSES, WHETHER DIRECT OR INDIRECT, INCLUDING WITHOUT LIMITATION, ANY LIABILITY FOR THIRD PARTY CLAIMS AGAINST YOU FOR DAMAGES OR LOSSES OR FOR PRODUCTS NOT BEING AVAILABLE FOR USE. THE MAXIMUM LIABILITY FOR WHICH KGI MAY BE RESPONSIBLE WILL BE NO MORE THAN THE AMOUNT YOU PAID FOR THE PRODUCT THAT IS THE SUBJECT OF THE CLAIM. SOME STATES, JURISDICTIONS OR COUNTRIES DO NOT ALLOW THE EXCLUSION OR LIMITATION OF SPECIAL, INDIRECT, INCIDENTAL OR CONSEQUENTIAL DAMAGES, SO THE ABOVE LIMITATION OR EXCLUSION MAY NOT APPLY TO YOU.

**WARRANTY OUTSIDE THE U.S.**

The Warranty on this product shall comply with applicable law when sold to a consumer outside of the United States. To obtain any applicable warranty service, please contact the dealer from which you purchased this product, or the distributor that supplied this product.

**3502 WOODVIEW TRACE, INDIANAPOLIS, IN, USA**

**[KLIPSCH.COM](#)**

©2024, Klipsch Group, Inc. Klipsch Group, Inc. is a wholly-owned subsidiary of Voxx International Corporation. Klipsch and Keepers of the Sound are trademarks of Klipsch Group, Inc., registered in the United States and other countries. The Bluetooth® word mark is a registered trademark owned by Bluetooth SIG, Inc. and any use of such mark by Klipsch Group, Inc. is under license.  
V01 – 240320

**Documents / Resources**

	<p><b><a href="#">Klipsch FLEXUS CORE 100 Sound Bar</a></b> [pdf] User Guide FLEXUS CORE 100, FLEXUS CORE 100 Sound Bar, Sound Bar, Bar</p>
---	---

**References**

- [User Manual](#)

[Manuals+](#), [Privacy Policy](#)

This website is an independent publication and is neither affiliated with nor endorsed by any of the trademark owners. The "Bluetooth®" word mark and logos are registered trademarks owned by Bluetooth SIG, Inc. The "Wi-Fi®" word mark and logos are registered trademarks owned by the Wi-Fi Alliance. Any use of these marks on this website does not imply any affiliation with or endorsement.