



KLIM Shift Gaming Mechanical Keyboard User Manual

[Home](#) » [KLIM](#) » KLIM Shift Gaming Mechanical Keyboard User Manual 

Contents

- [1 KLIM Shift Gaming Mechanical Keyboard](#)
- [2 Product Information](#)
- [3 Package Contents & Product Diagram](#)
- [4 Product Usage Instructions](#)
- [5 CHARGING THE BATTERY](#)
 - [5.1 Battery indicators](#)
- [6 BLUETOOTH MODE](#)
- [7 KEYBOARD SHORTCUTS & THE FN KEY](#)
- [8 KEYBOARD CUSTOMIZATION](#)
 - [8.1 Replacing the keycaps](#)
 - [8.2 Replacing the switches \(advanced users only!\)](#)
- [9 TROUBLESHOOTING](#)
- [10 Technical specifications](#)
- [11 Documents / Resources](#)
 - [11.1 References](#)
- [12 Related Posts](#)



KLIM Shift Gaming Mechanical Keyboard



Product Information

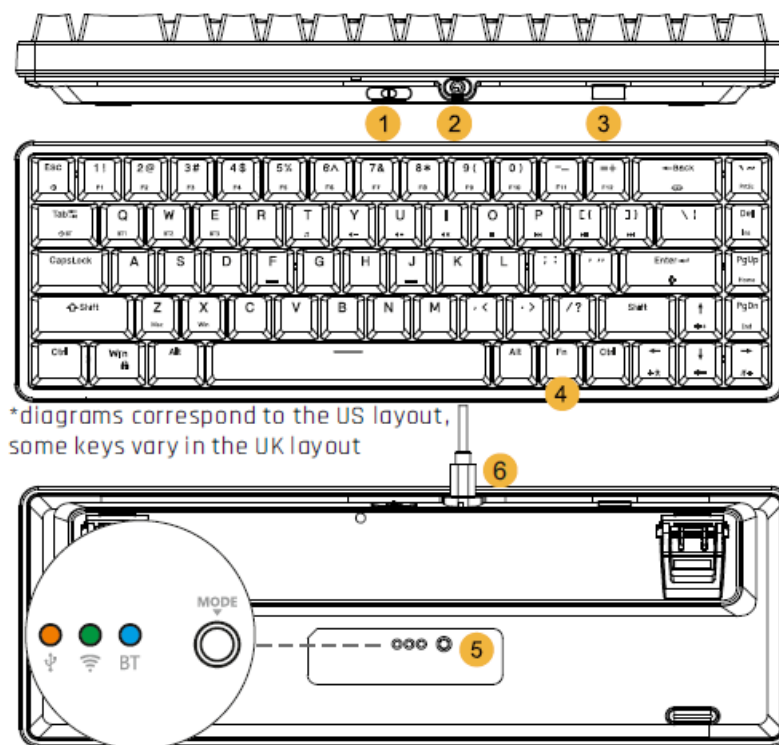
The KLIM Shift is a versatile keyboard that offers wired, wireless (2.4G), and Bluetooth modes. It features a compact design with a magnetic frame and comes with a set of replacement keycaps, a switch puller, and a keycap puller. The keyboard also includes a USB to Type-c cable for wired connection and a 2.4G wireless receiver for wireless mode.

Package Contents & Product Diagram

- Keyboard
- USB to Type-c cable
- Set of replacement keycaps (standard OEM)
- Switch puller
- Magnetic frame (attached)
- 2.4G Wireless receiver
- Keycap puller
- User manual + Reference card

The keyboard has the following components:

1. ON/OFF switch
2. USB-C port
3. 2.4G Wireless Receiver
4. FN Button
5. Mode button
6. USB-C cable



Product Usage Instructions

Wired Mode

To use the keyboard in wired mode:

1. Connect the USB cable to the keyboard and your computer.
2. Flick the switch behind the keyboard to the ON position.
3. Press the mode switch underneath the keyboard until it is set to Wired (orange light).

Wireless Mode (2.4G)

To use the keyboard in wireless mode with the 2.4G receiver:

1. Take the wireless USB receiver from behind the keyboard and connect it to your computer.
2. Flick the switch behind the keyboard to the ON position.
3. Press the mode switch underneath the keyboard until it is set to 2.4G mode (green light).

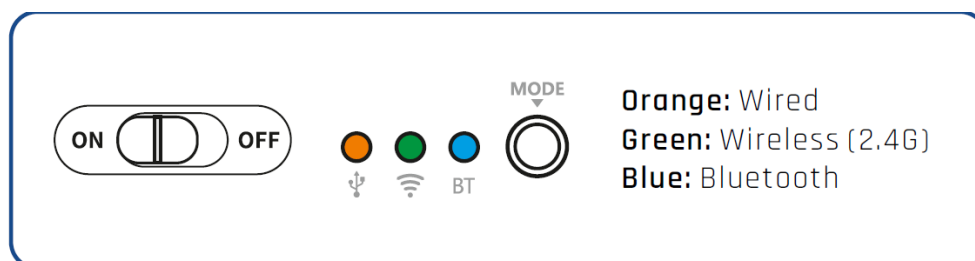
Bluetooth Mode

To use the keyboard in Bluetooth mode:

1. Press the mode switch underneath the keyboard until it is set to Bluetooth (blue light).
2. Press FN + Q for 3 seconds to search for compatible devices. The light starts blinking to indicate pairing status.
3. Select "KLIM Shift 5.0 / 3.0" on the device you want to pair with.

Note: For detailed Bluetooth instructions and pairing of multiple devices, please refer to the Bluetooth Connection Modesection in the user manual.

IMPORTANT: Make sure the ON/OFF switch is set to ON and the correct mode is selected underneath the keyboard in any mode.



CHARGING THE BATTERY

Battery indicators

The light on the spacebar indicates the status of the battery:

Fixed red light: charging

Flashing red light: low battery

Lights off: fully charged

When the keyboard battery is low, connect the cable to your computer or an external power source (such as a USB charger) to charge your keyboard. You may continue to use it while it charges.

Tip: lowering the brightness or switching off the RGB lighting completely significantly increases the battery life and reduces the frequency of charges.

Power saving function

In order to preserve battery life, the keyboard lights turn off after 7 minutes of inactivity while on a wireless connection (2.4G or Bluetooth). The keyboard enters a stand-by mode after 30 minutes of inactivity. Ending any wireless connection also puts the keyboard on stand-by mode.

BLUETOOTH MODE

Note: for basic pairing instructions, check the Quick Start Guide in the previous page.

You can pair up to 3 devices at the same time, and quickly switch between them, by following the pairing steps detailed in the quick start guide with each of the available keys (Q, W, E).



Each key has a different light indicator (blue, cyan, purple). While pairing mode is active, the light flashes. Once the keyboard has been paired with the device on the selected key (Q, W or E), the light will become still and then turn off. If pairing is not completed within 2 minutes, the pairing process stops and the light turns off.

When multiple devices are paired, simply press FN + Q/W/E to select each one. The corresponding light blinks once and then turns off.

Note: depending on your Operating System, one or two device names may appear (KLIM Shift 3.0 or KLIM Shift 5.0). When available, it is recommended to select 5.0.

KEYBOARD SHORTCUTS & THE FN KEY

This is a compact keyboard which does not have the usual 104/105 keys of a full-sized one. However, fear not! You can still access every key and even multimedia shortcuts thanks to the FN key. Simply press and hold the FN key while you press other keys on the keyboard.

The diagram below indicates the location of each set of special function keys:

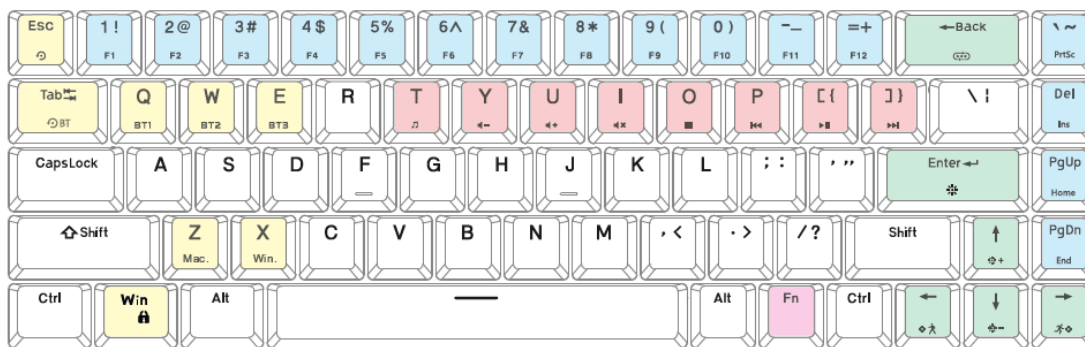
Red: multimedia

Blue: function keys

Green: backlighting adjustment

Yellow: other

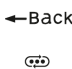








Tip: the small white text / icons indicate the function of that key when pressing it along the FN key.



*diagrams correspond to the US layout,
some keys vary in the UK layout

Backlight adjustments

Change backlighting effects, colors, brightness and speed using these shortcuts. For advanced color customization, you may download our dedicated drivers at www.klimtechs.com/drivers

	Change mode	 	Decrease brightness
	Change color	 	Reduce effect speed
	Increase brightness	 	Increase effect speed

Function keys





This set of keys allows you to access the F1-F12 keys as well as Print screen, Insert, Home and End.

PrtSc	Print screen	5% F5	F5
Del Ins	Insert	6^ F6	F6
PgUp Home	Home	7& F7	F7
PgDn End	End	8* F8	F8
1! F1	F1	9(F9	F9
2@ F2	F2	0) F10	F10
3# F3	F3	-_ F11	F11
4\$ F4	F4	=+ F12	F12

Multimedia shortcuts

	Media Player		Stop
	Volume down		Previous track
	Volume up		Play/pause
	Mute sound		Next track

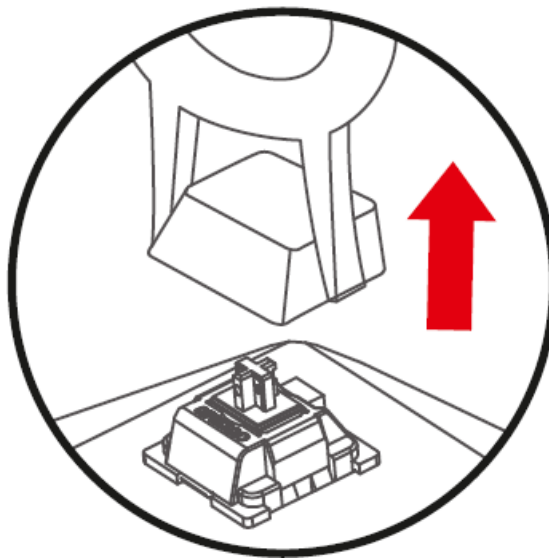
Other shortcuts

	Restore original settings: FN + ESC for 3 seconds.
Tab   BT	Restore Bluetooth settings: FN + TAB for 3 seconds.
Win 	Windows lock: FN + WIN to lock/unlock the Windows key.
Q BT1	Select/Pair Bluetooth device 1
W BT2	Select/Pair Bluetooth device 2
E BT3	Select/Pair Bluetooth device 3
X Win.	The keyboard's default mode is Windows. If using a Mac computer, press FN + Z to swap the functions of the Control, Win and Alt keys to match the Control, Command and Option keys on a Mac keyboard. Press FN + X to return to the normal Windows keys parameters.
Z Mac.	

KEYBOARD CUSTOMIZATION

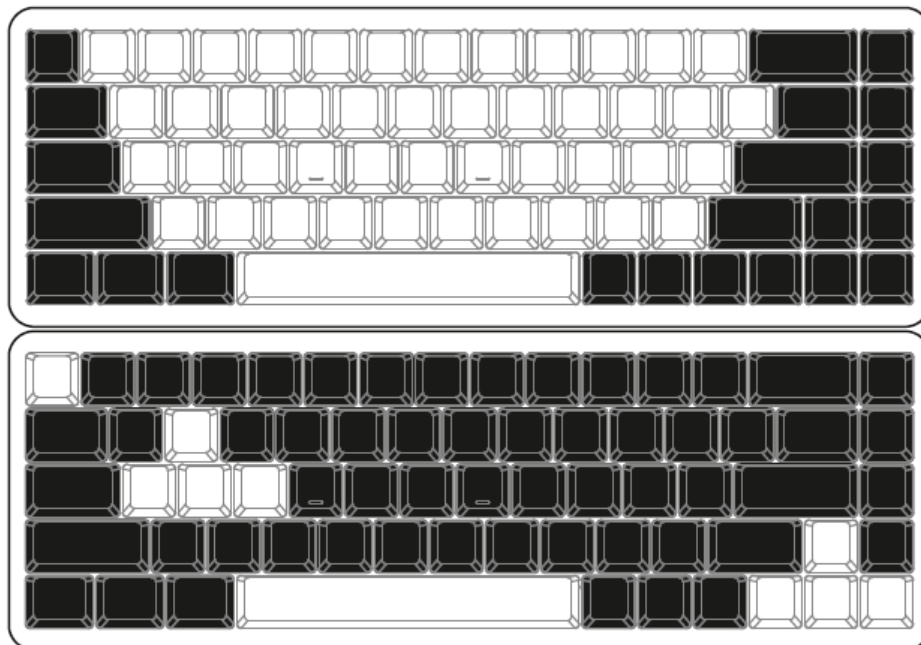
Replacing the keycaps

This keyboard includes a set of spare white keycaps that you can install to give your keyboard a unique look. Use the keycap removal tool to extract the keycaps by pressing down until the keycap is hooked, then pulling up. Take the replacement keycap and install it by aligning it with the switch and firmly pressing down.



Tip: make sure you place them in the right position! Otherwise it can be confusing to use the keyboard (unless you're a touch-typing master, that is).

Here are some layout ideas:



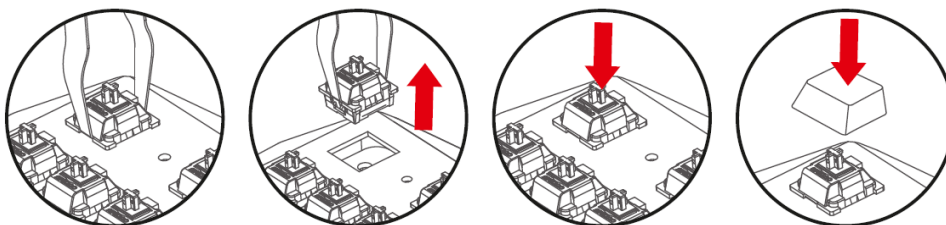
Frame/frameless mode

The frame of the keyboard is removable. Grab the keyboard and push down with your thumbs while pulling the frame upwards. To reinstall it, simply place it in position again until it is magnetically attached.

Replacing the switches (advanced users only!)

This keyboard is hotswappable, which means you can swap the switches without any soldering. Here are the instructions on how to go about it:

1. Use the key removal tool to extract the keycaps (as explained in the previous section).
2. Clamp the front and back of the switch (NOT the left and right) using a switch puller and pull up until you completely remove the switch.
3. Take the new switch and push it down with your hand until it is set in place. Pay attention to the switch orientation and make sure the pins are properly aligned!
4. Reinstall the keycap by hand and enjoy your new switches!



TROUBLESHOOTING


If the problem persists, contact us at support@klimtechnologies.com. Our team of specialists is at your disposal and will always reply within 24 hours!

Problem	Solution
The keyboard does not work	<ol style="list-style-type: none"> 1. Check that the ON/OFF switch at the back is in the ON position. 2. Charge the battery. 3. Check that the USB plug (wired or wireless) is properly connected. 4. Check that the correct mode is selected on the Mode Button underneath the keyboard.
The keyboard sometimes stops working temporarily while on 2.4 G Wireless Mode.	<ol style="list-style-type: none"> 1. Make sure that there are no obstacles between the keyboard and the Wireless receiver. 2. Check the battery charge. 3. Make sure you have not exceeded the maximum usage distance.
The keyboard sometimes inputs two presses instead of one	This is known as key chattering and may affect some mechanical keyboards. Remove the keycap and firmly press the switch downwards using a thin tool (make sure it's not sharp!) a few times, then reinstall the keycap and try again.
The Windows key doesn't work	Check that the Windows lock is not activated (press FN + WIN key).
The Ctrl/Alt/Windows keys do not work properly	Check that the keyboard is in the correct OS mode (Windows/Mac) by pressing FN + Z/X .
Bluetooth mode does not work	<ol style="list-style-type: none"> 1. Check that Bluetooth Mode is selected on the Mode Button underneath the keyboard. 2. Make sure that the device you want to pair the keyboard with is looking for devices when you want to pair it. 3. Try selecting a different Bluetooth Device if available (3.0 / 5.0). 4. Make sure that you have selected the correct device via the FN+Q/W/E keys.
My Wireless USB receiver is not detected.	If the keyboard does not recognize the USB receiver, try pairing them again. Unplug the USB receiver. Select 2.4G mode via the button under the keyboard: the green light will turn on for 1 second and then turn off. Press and hold FN + R for more than 3 seconds, then plug in the USB receiver to pair it.

Technical specifications

Keyboard dimensions	316 x 107 x 35 mm
Keyboard weight	650 g
Wireless frequency band	2.4 Ghz
Wireless distance	up to 10 m
Battery capacity	3,7 V 2000 mAh
Charging time	3 hours
Charging voltage	5 V
Charging current	3 V 1000 mA
Continuous usage time at max. brightness	10 hours
Key life expectancy	50 million clicks
Energy saving auto stand-by	7 minutes
Switch type	Brown (hot- swappable)
Supported OS	Windows, MacOS, iOS, Android

Documents / Resources

	KLIM Shift Gaming Mechanical Keyboard [pdf] User Manual Shift, Shift Gaming Mechanical Keyboard, Gaming Mechanical Keyboard, Mechanical Keyboard , Keyboard
---	--

References

-  [KLIM Technologies](#)
-  [KLIM Technologies](#)
-  [KLIM Technologies](#)
- [User Manual](#)

[Manuals+](#), [Privacy Policy](#)

This website is an independent publication and is neither affiliated with nor endorsed by any of the trademark owners. The "Bluetooth®" word mark and logos are registered trademarks owned by Bluetooth SIG, Inc. The "Wi-Fi®" word mark and logos are registered trademarks owned by the Wi-Fi Alliance. Any use of these marks on this website does not imply any affiliation with or endorsement.