



KLHA KD37B88 4-20MADisplay Type Wind Speed Sensor In Pipeline User Manual

[Home](#) » [KLHA](#) » KLHA KD37B88 4-20MADisplay Type Wind Speed Sensor In Pipeline User Manual 

KLHA KD37B88 4-20MADisplay Type Wind Speed
Sensor In Pipeline User Manual

KD37B88

4-20MADisplay type wind speed sensor in pipeline

User Manual

File Version: V21.7.3



KD37B88 using the standard ,easy access to PLC DCS and other instruments or systems for monitoring wind speed state quantities. The internal use of high-precision sensing core and related devices to ensure high reliability and excellent long-term stability, can be customized RS232,RS485,CAN,4-20mA,DC0~5V\10V,ZIGBEE,Lora,WIFI,GPRS and other output methods.

Contents

- [1 Technical Parameters](#)
- [2 Product Size](#)
- [3 How to wiring?](#)
- [4 Application solution](#)
- [5 How to use?](#)
- [6 Disclaimer](#)
- [7 Contact Us](#)
- [8 Documents / Resources](#)
 - [8.1 References](#)
- [9 Related Posts](#)

Technical Parameters

Technical parameter	Parameter value
Brand	KLHA

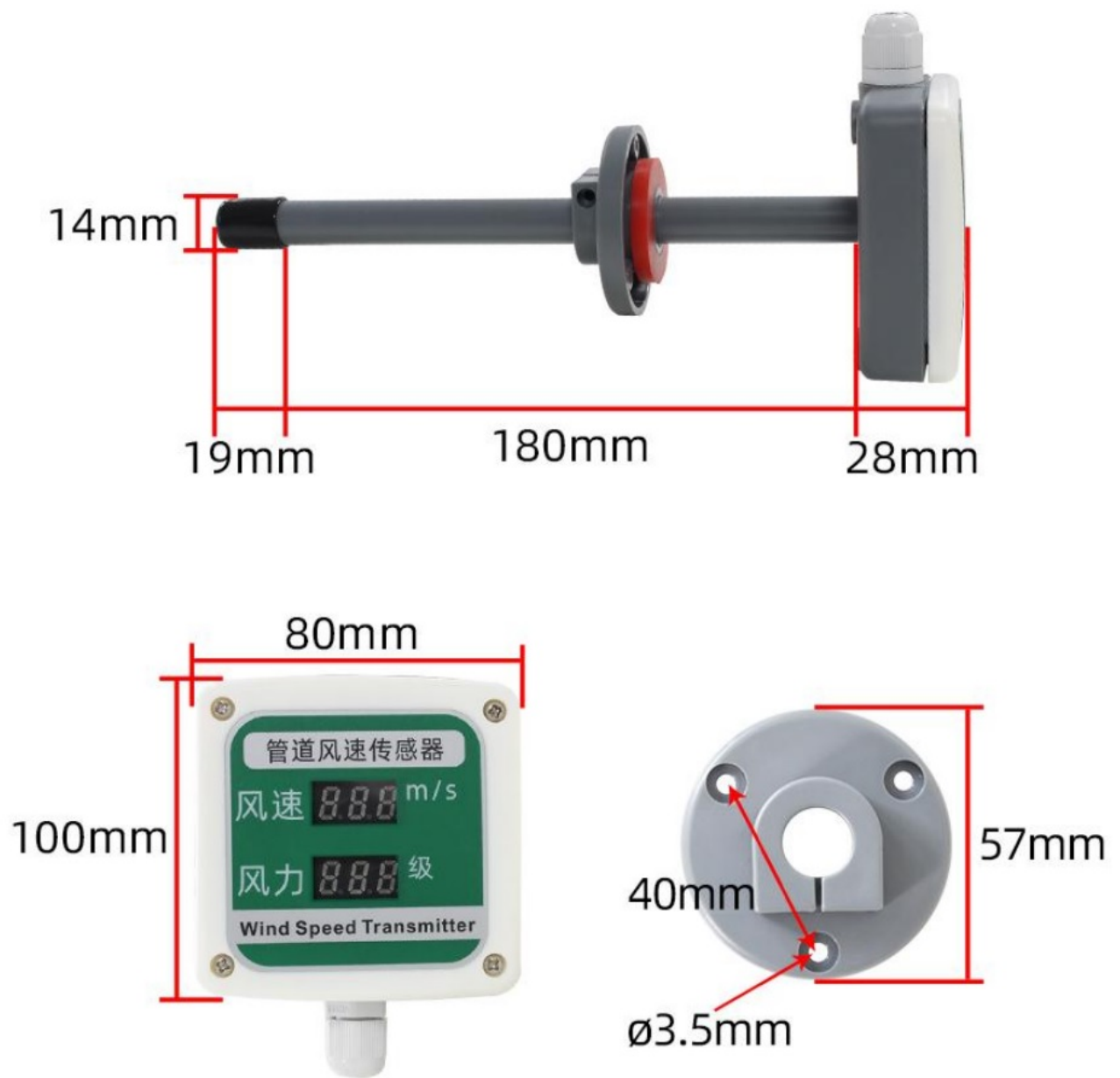
Wind speed range	0~30m/s
Wind speed accuracy	±3%
Induction principle	Thermal film induction
Power	DC12~24V 1A
Running temperature	-40~80° C
Working humidity	5%RH~90%RH

Product Selection

Product DesignRS485,Multiple output methods, the products are divided into the following models depending on the output method.

Product model	output method
KD37B8B	RS485 总线

Product Size



How to wiring?



WATERPROOF CONNECTOR

Tighten the terminal
to lock the cable
Anti-pull and anti-water

SEALING RING

Red is the sealing ring
Prevent internal circuit board
damage due to water ingress





LED DISPLAY

Low power consumption
highlight display
The night is still clearly visible

WIRING PORT

There are terminals inside
the top cover
Wiring according to their own
matching requirements





FLANGE MOUNTING PLATE

Removable installation
After installation, the duct
sensor can be inserted
into the flange to fix it

RS485(No DIP)

B-/V	RS485 B-
GND	PWR-
VIN	PWR+
A+/I	RS485 A+

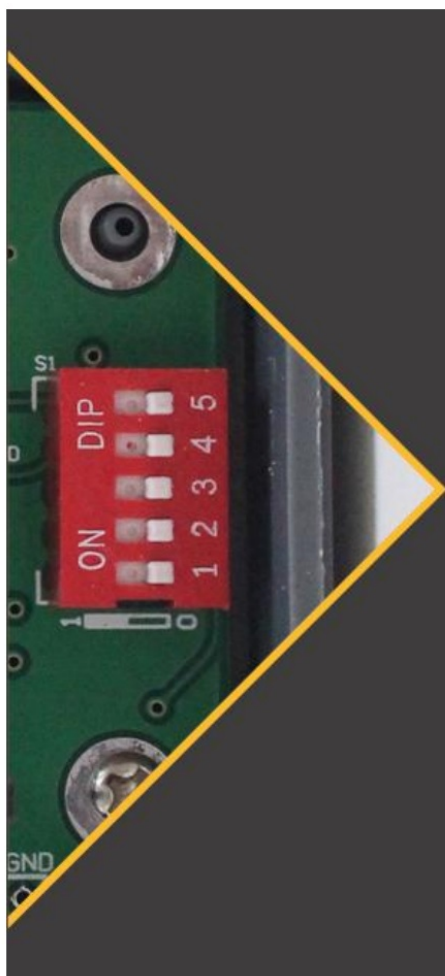
4~20mA(DIP)

B-/V	Null
GND	PWR-
VIN	PWR+
A+/I	mA Out

0~10V(DIP)

B-/V	V Out
GND	PWR-
VIN	PWR+
A+/I	Null

※Note: When wiring, connect the positive and negative poles of the power supply first, and then connect the signal wire



DIP(Value)

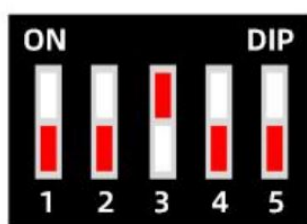
3	4	Range
ON	ON	0~10m/s
OFF	ON	0~20m/s
ON	OFF	0~30m/s Default

DIP(Mode)

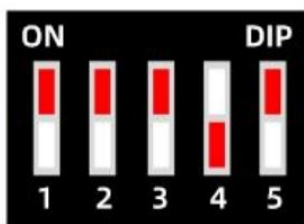
5	1	2	Method
ON	ON	ON	5V
ON	OFF	ON	10V
OFF	OFF	OFF	4~20mA

DIP INTRODUCTION

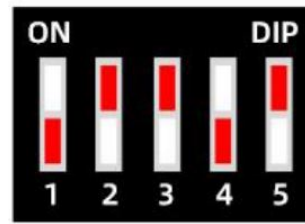
3 and 4 are wind speed range switching, 2 and 5 is voltage/current mode switching, 1 is 0~5V/0~10V switching



4~20mA

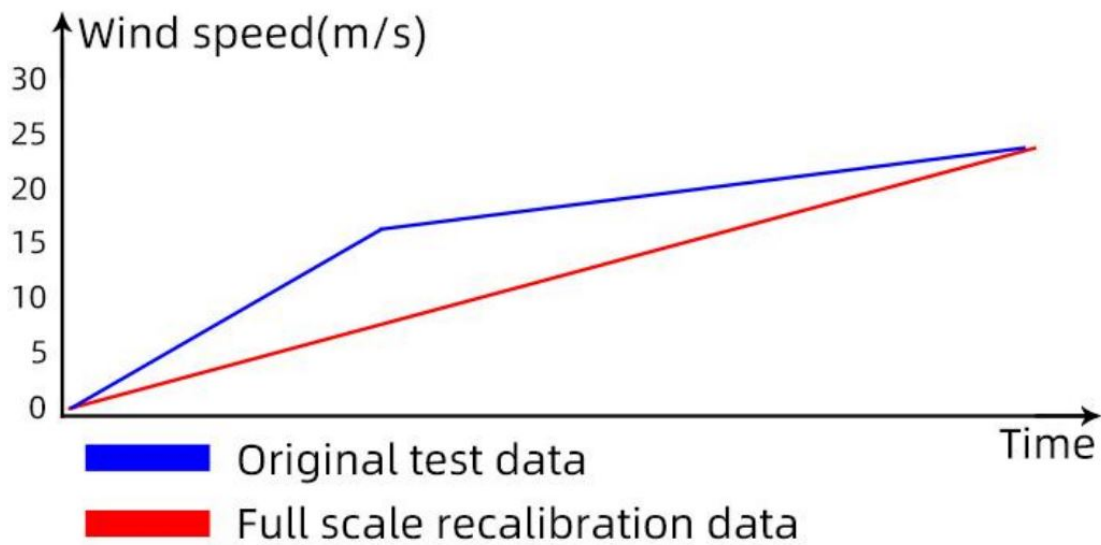


DC0~5V

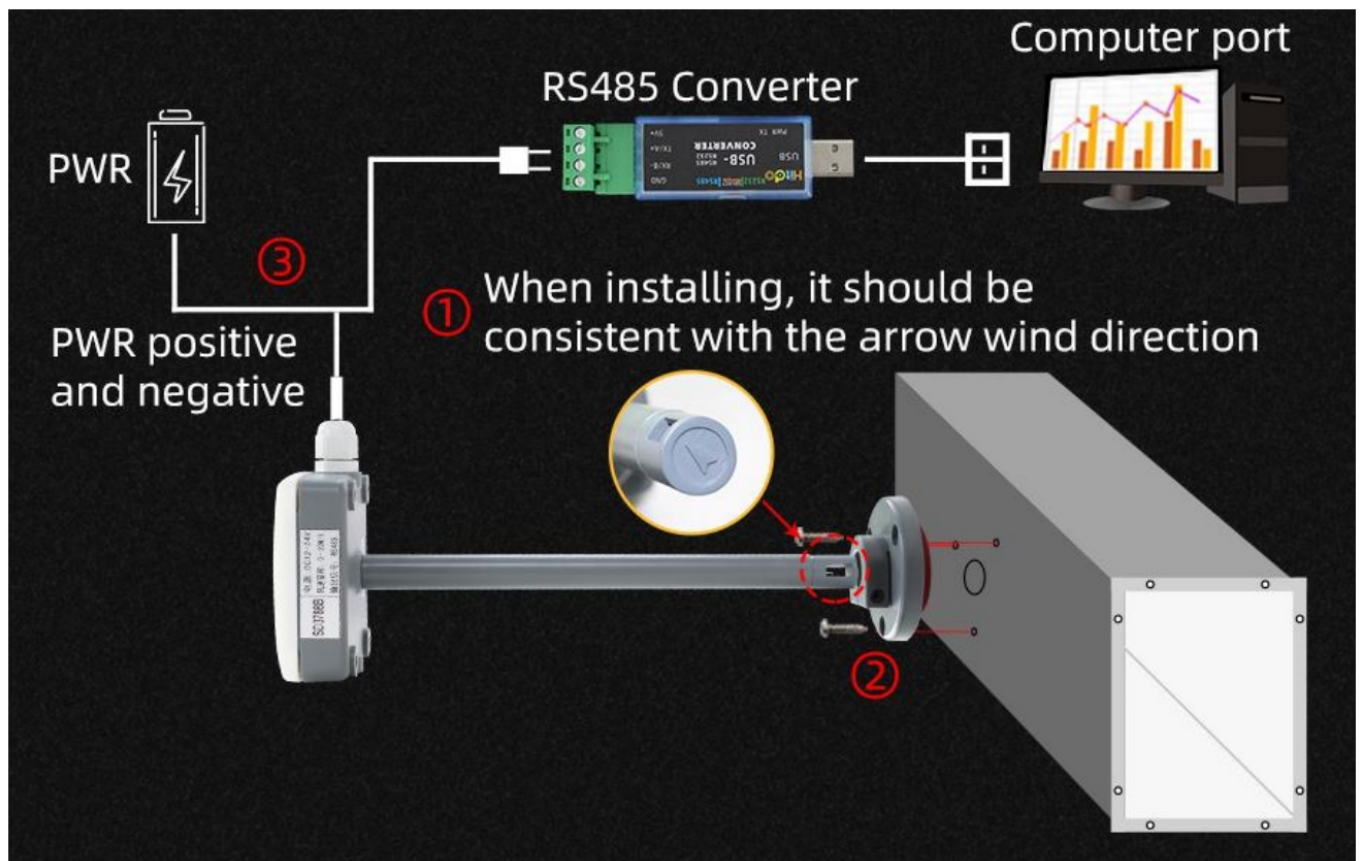


DC0~10V

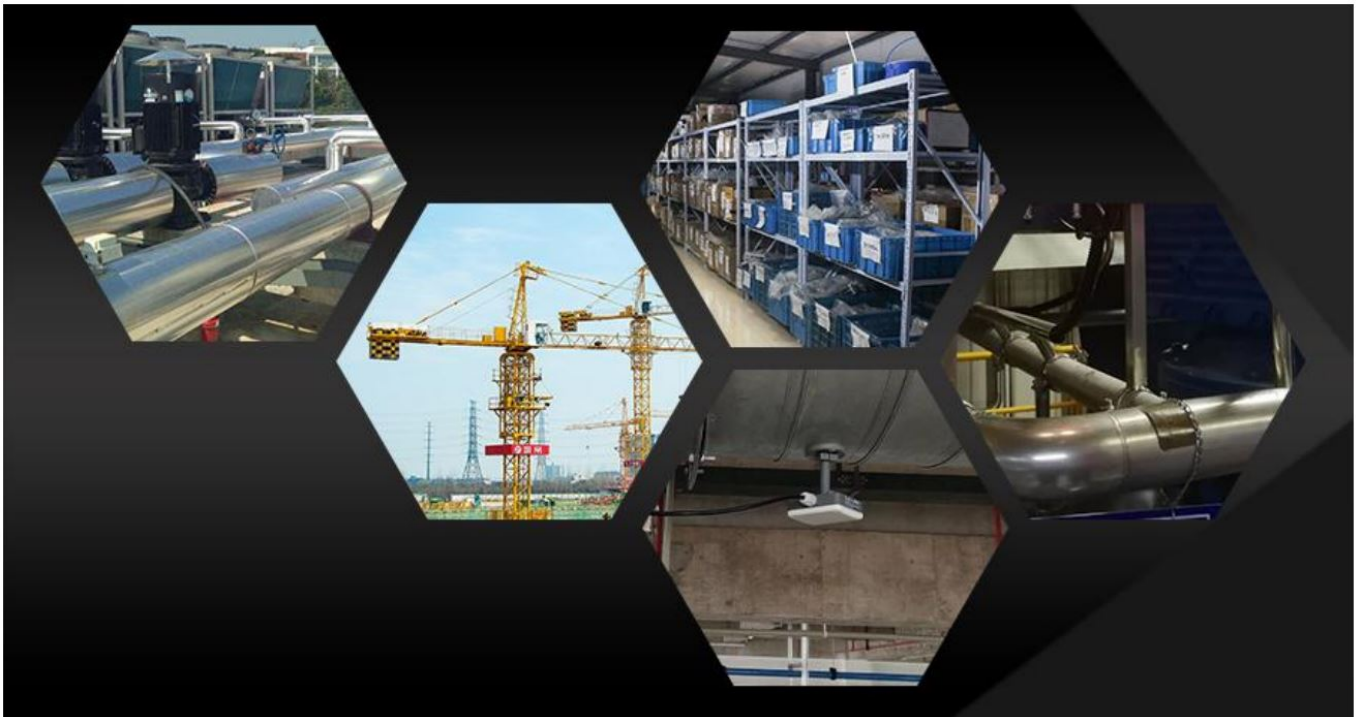
FULL SCALE CALIBRATION



Application solution



How to use?



Disclaimer


This document provides all information about the product, does not grant any license to intellectual property, does not express or imply, and prohibits any other means of granting any intellectual property rights, such as the statement of sales terms and conditions of this product, other issues. No liability is assumed. Furthermore, our company makes no warranties, express or implied, regarding the sale and use of this product, including the suitability for the specific use of the product, the market ability or the infringement liability for any patent, copyright or other intellectual property rights, etc. Product specifications and product descriptions may be modified at any time without notice.

Contact Us

Company: Shanghai Sonbest Industrial Co., Ltd KLHA Brand Division
 Address: Building 8, No. 215 North east road, Baoshan District, Shanghai, China
 Web: <http://www.klha.com>
 Web: <http://www.klha.com>
 SKYPE: soobuu
 Email: sale@sonbest.com
 Tel: 86-021-51083595 / 66862055 / 66862075 / 66861077

Shanghai Sonbest Industrial Co., Ltd KLHA Brand Division

Documents / Resources

	<p>KLHA KD37B88 4-20MA Display Type Wind Speed Sensor In Pipeline [pdf] User Manual KD37B88, 4-20MA Display Type Wind Speed Sensor In Pipeline</p>
---	---

References

- [🌐 Home-KLHAå¿«ä¹æµ·å².ç%.©è”ç½‘](#)
- [🌐 Home-KLHAå¿«ä¹æµ·å².ç%.©è”ç½‘](#)

Manuals+.