

**Contents** [ [hide](#) ]

[1 klassfan MODULO REGULAR V2 Ceiling Fan](#)

[2 WARRANTY](#)

[3 DESCRIPTION](#)

[4 INSTALLATION](#)

[5 BLADES](#)

[6 BALANCING](#)

[7 OPERATION](#)

[8 Documents / Resources](#)

[8.1 References](#)

**klassfan**

**klassfan MODULO REGULAR V2 Ceiling Fan**



USE ONLY ORIGINAL OR APPROVED ACCESSORIES AND SPARE PARTS.



DC MOTOR



220~240V/50HZ



MAX. 50 W



6 SPEEDS



IEEE 802.11 b/g/n
2.4 - 2.4835 GHz
18 dbm

Please read this user manual carefully before use, and keep it for future reference.

HOUSEHOLD AND INDOOR USE ONLY

## WARNING



“Dangerous high voltage”. To avoid electrical shock, non-professional personnel is forbidden to open the housing.



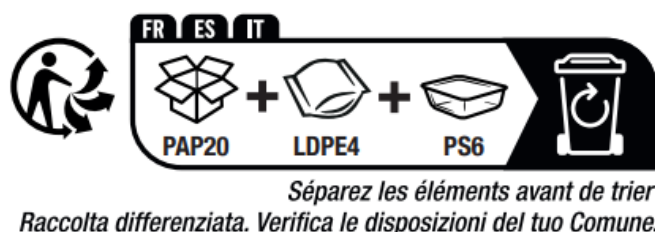
There are no user-serviceable parts inside the device. Please contact a professional electrician or after-sales service. Do not attempt to repair it yourself.



Your fan must be earthed and connected to a wall switch.

- This appliance must be used under the rated voltage and frequency as indicated in rating label.
- This fan must be installed by a licensed and qualified electrician.
- This appliance can be used by children aged from 8 years and above and persons with reduced physical, sensory or mental capabilities or lack of experience and knowledge if they have been given supervision or instruction concerning use of the appliance in a safe way and understand the hazards involved.
- Children shall not play with the appliance. Cleaning and user maintenance shall not be made by children without supervision.
- To avoid a possible electric shock, be sure electricity is turned off at the main power box before installing your fan. Disconnect the power by turning off the circuit breakers to the outlet box and associated wall switch location.
- Do not install in areas/places near chemicals and flammable products, such as gas stoves, wet and humid places, such as bathrooms, or high vibration or impact and continuous direct exposure to the wind.
- According to safety regulations, the lowest point of the fan blade must be at least 2.3 metres from the floor.

- Do not allow the blades to come into contact with any object.
- Please check carefully and make sure that ceiling joists are strong enough and of adequate size to support the weight of the fan.
- To reduce the risk of fire, electrical shock or personal injury, please make sure that the fan mounting bracket is directly supported from the building structure. Do not mount to an outlet box.
- The device must be permanently connected to the power supply via a double pole switch with a contact separation of at least 3 mm in all poles.
- Do not connect the ceiling fan to a dimmer or regulator.
- The mounting plate must be firmly screwed to a load bearing structure eg. a concrete must be securely nailed or screwed between the beams.
- Attach fan blades after the fan motor housing is installed and properly secured. Keep the fan motor and fan blades in the original package until is ready to be installed.
- Check and confirm, after the fan is completely installed, that all connections are proper and secure to prevent the fan from falling or causing property damage or personal injury.
- Take care not to bend or damage the motor drive shaft or fan blades when handling or installing them. If such defect is noticed, please contact the customer service before installation of the ceiling fan.
- Use of an unapproved remote control voids the warranty. Only use our remote control.
- Do not remove the fan from the ceiling after installation.
- Do not insert any objects between the blades and the motor housing.
- Do not use the device if the cable is damaged, after incorrect operation or damage of the device.
- All service and repair work must be carried out by authorised personnel only. Do not attempt to repair the appliance yourself.



Plastic and cardboard packaging can be recycled. Separate and dispose of each material in the appropriate recycling container. Consult your local authorities for more

information on recycling.



## DISCARDING WORN HOUSEHOLD DEVICES



■ The European directive 2012/19/EU pertaining to electrical and electronic waste prohibits such household goods from being discarded with local refuse services. Worn devices must be collected separately to optimize the recovery and recycling

rates of the components therein to reduce detrimental effects on the environment and on human health.

## RECYCLE OF USED BATTERIES AND ACCUMULATORS



The remote control is battery-operated. According to the European Directive 2006/66/EC on batteries, accumulators and rechargeable batteries, batteries must not be disposed of with household waste. Please inform us about local regulations for the disposal of batteries. Proper disposal protects the environment and human health.

## WARRANTY

The motor of your fan is guaranteed for 10 years, the electrical elements are covered by a guarantee in accordance with current legislation, except for problems due to their installation or the electrical network. Keep your purchase invoice. Without it, we cannot implement the after-sales service.

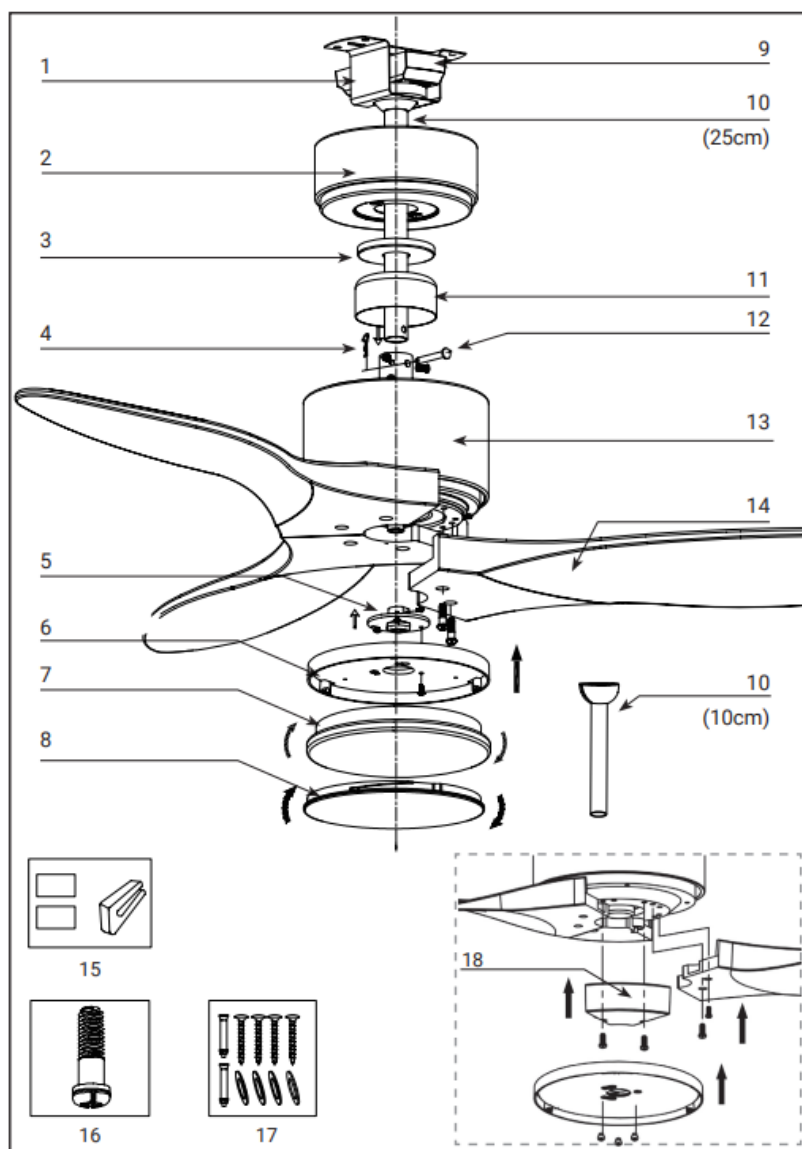
Our guarantee is a parts guarantee, we send you the necessary parts for the correct operation of your fan.



In accordance with the European directives applicable to this product, including the Radio Equipment Directive (RED) 2014/53/EU.

The full text of the EU declaration of conformity is available at : [www.klassfan.com](http://www.klassfan.com)

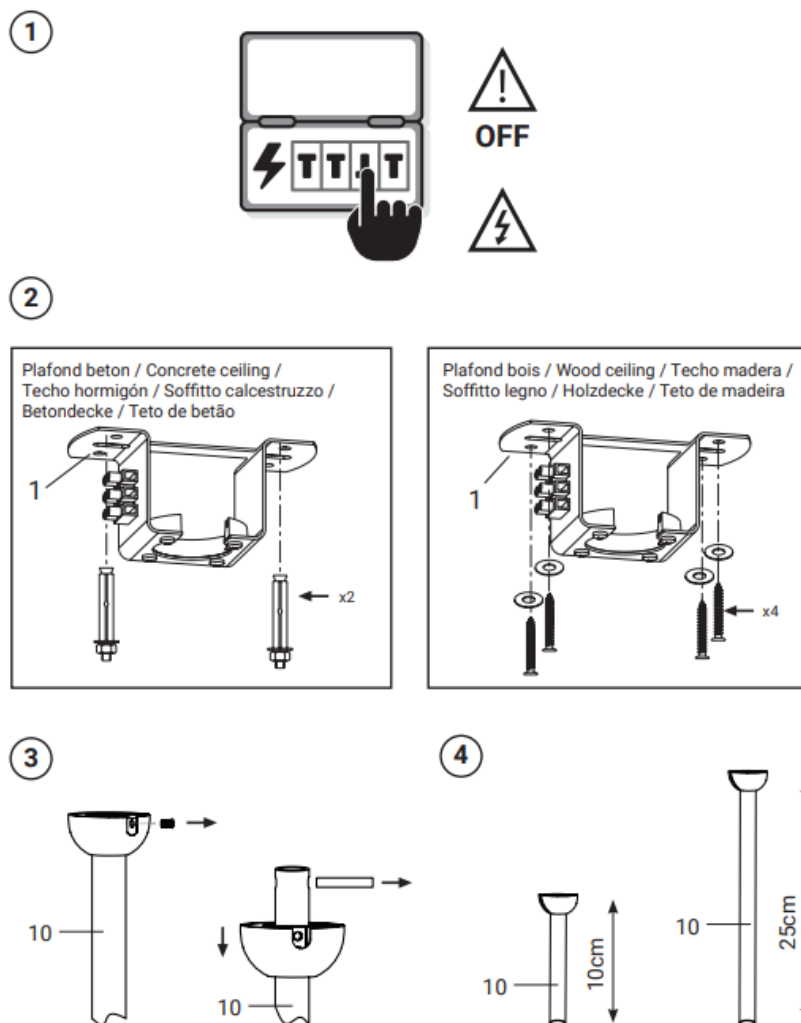
## DESCRIPTION



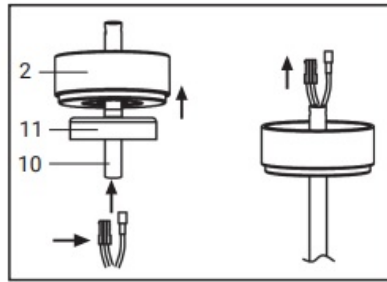
1. Hanger bracket
2. Canopy
3. Canopy cover
4. R pin
5. Light connector
6. Light fixture
7. Lamp shade

8. Decorative cover  
(without light)
9. Remote control receiver
10. Downrod
11. Decorative cover
12. Cross pin
13. Motor housing
14. Blades
15. Balancing kit
16. Blade attachment kit
17. Screws and washers
18. Fixed block (for 2 blades) + 4 screws (only for blades P1, P2, P4)

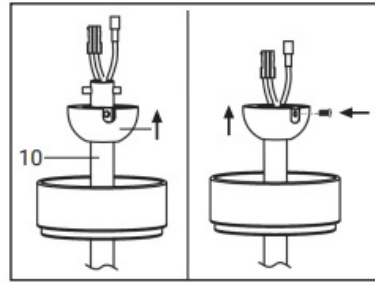
## INSTALLATION



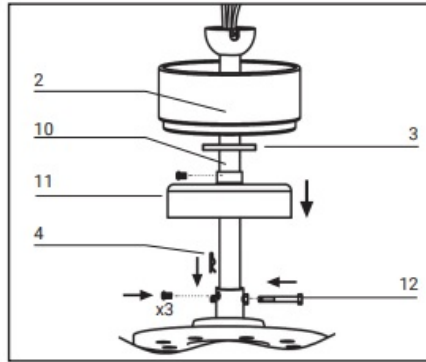
5



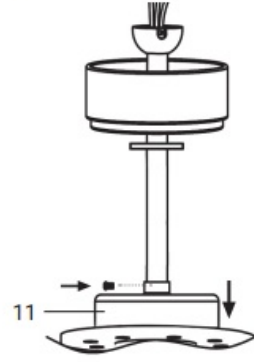
6



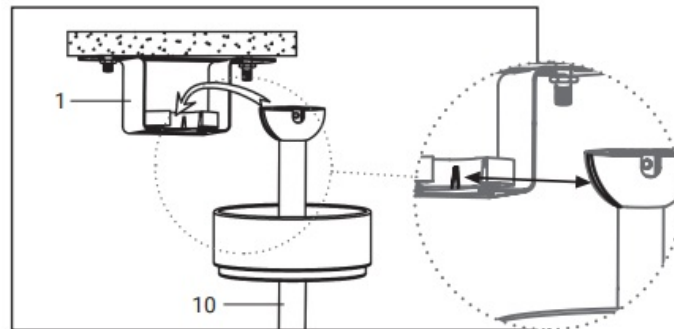
7



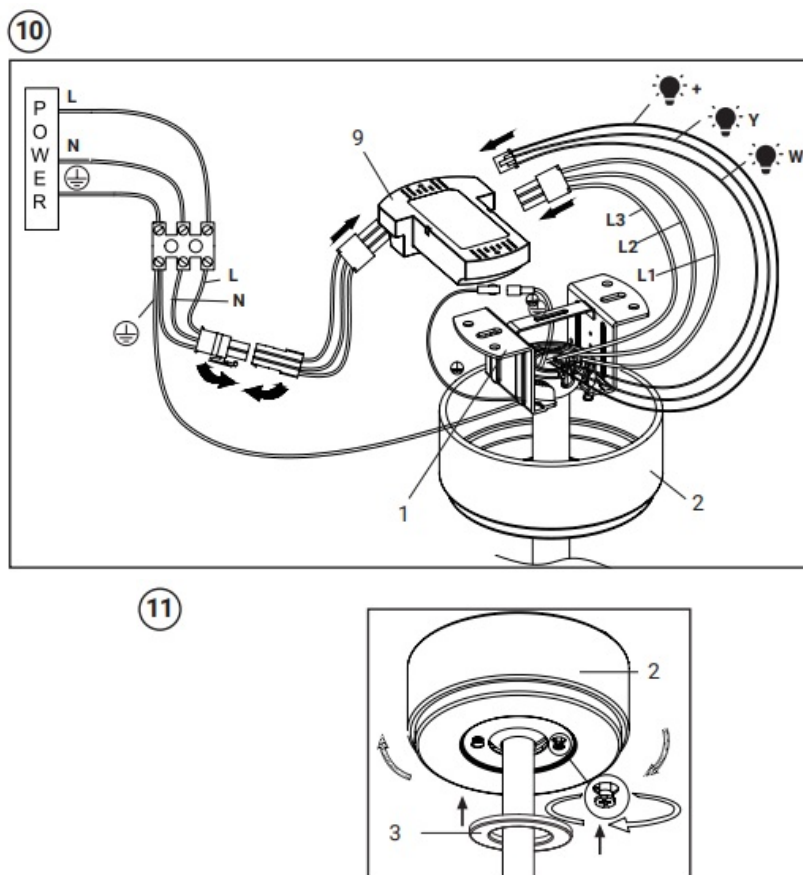
8



9

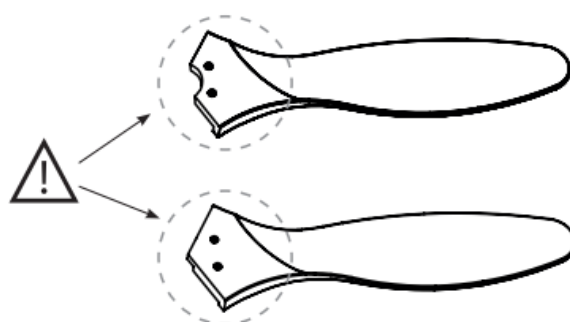


- Black
- Blue
-  Green/Yellow
- Black
- White
- Yellow
- Red
- Brown
- Naranja



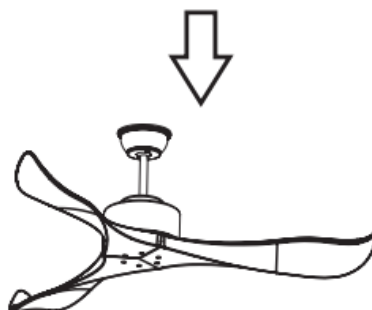
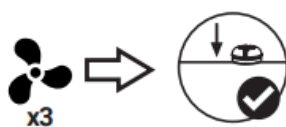
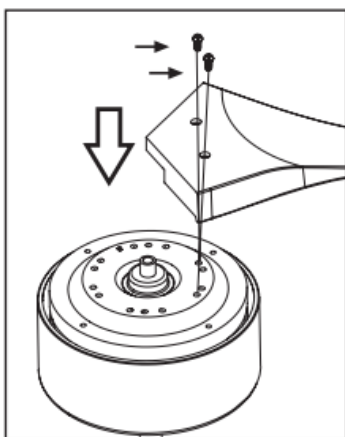
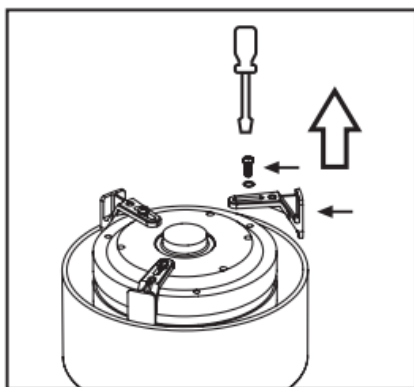
## BLADES

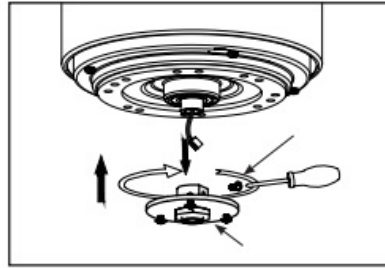
**ATTENTION!** Do not power the fan without mounting the blades first. The engine is equipped with a safety mode that will prevent it from operating normally.



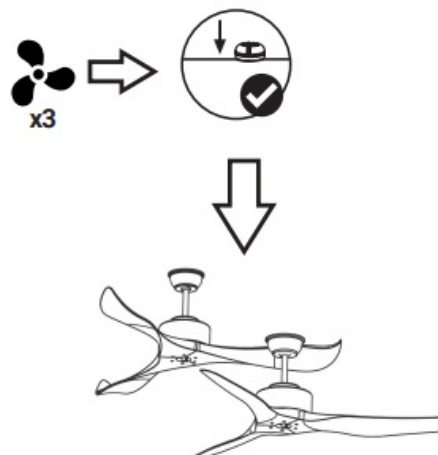
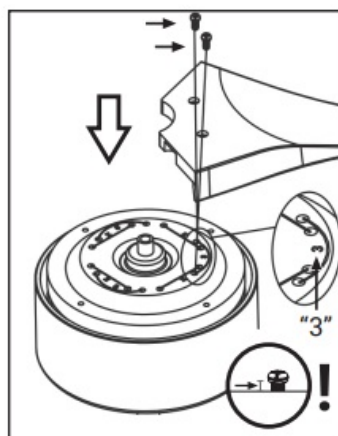
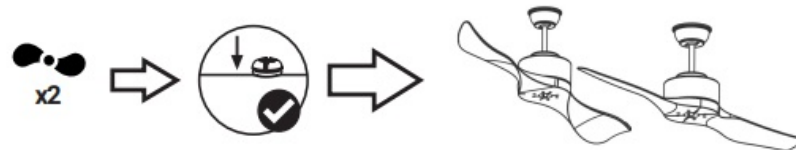
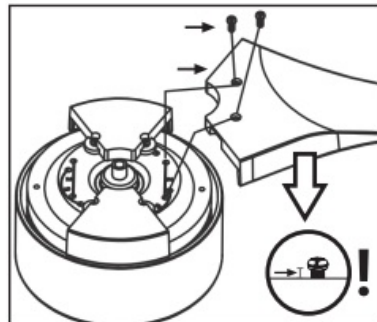
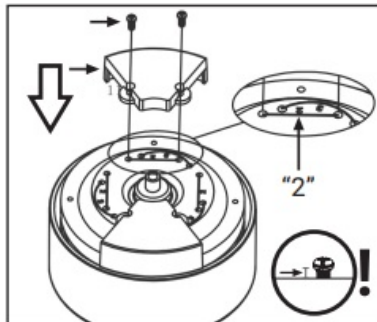
Skip this step in the Tenerife model.



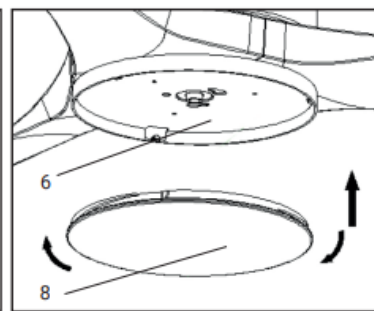
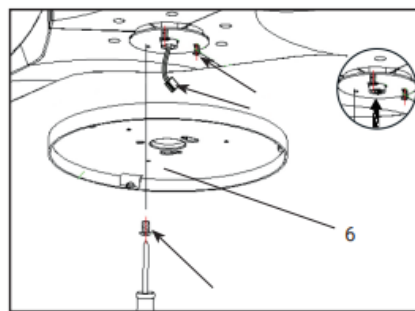
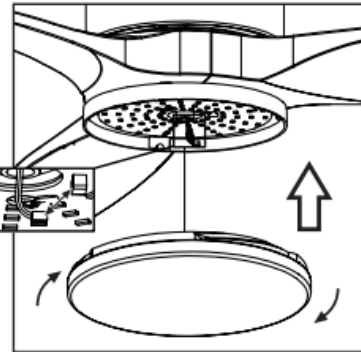
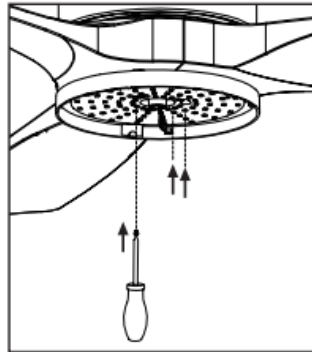
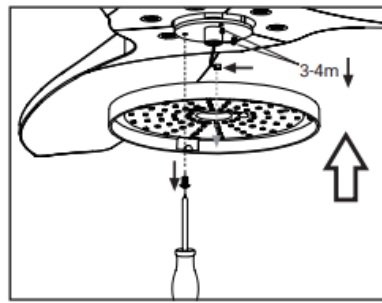




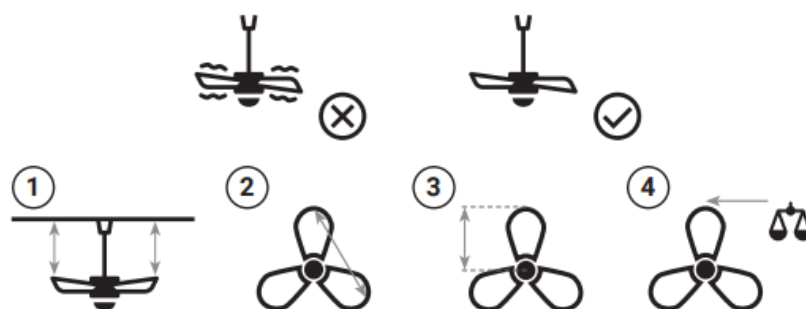
P1, P2, P4 ✓



**ATTENTION!** Be careful when assembling the parts, only one unassembled item can slightly unbalance the fan. Please do not forget a single element, screws, washers.



## BALANCING



1. A- A washer is missing from the lifting blade / B- The blade is incorrectly installed or tightened / C- The fan is incorrectly fixed, the ball joint is not in the groove / D- The rod fixing at the coupler is not done correctly, the fan is not vertical.
2. Place the same mark on the tip of each blade and measure the distance between each blade. If the distance is not the same, unscrew the screws holding the blades slightly, place the blades on the correct axis and retighten the screws.

3. If one of the blades is longer, loosen the screws on that blade and tighten them firmly, making sure that the blade does not slip.
4. At the end of a blade, pinch the pliers and turn your fan on. If the fan does not vibrate, remove the pliers and stick a 1 gram lead on the upper end of the blade. If the vibration continues, proceed in the same way for each blade until there is no more vibration.

## OPERATION

**WARNING!** If the fan is not going to be used for more than 3 days, make sure the switch is in the off position.

**REMOTE CONTROL:** This ceiling fan is operated by remote control and the functions depend on the selected Modulo variants.

Please check the operating instructions of the remote control for detailed explanation of the functions available on your ceiling fan model.

**WARNING!** Take into account that the remote control must be configured with a specific program depending on the blade model you install on your fan. A program error can cause irreversible damage to your fan!

### Customer service

[aftersales@klassfan.com](mailto:aftersales@klassfan.com)

[contact@klassfan.com](mailto:contact@klassfan.com)

Tel : +34 960 082 885

[www.klassfan.com](http://www.klassfan.com)



---

IMPORTER / IMPORTADOR:


**ONLINE B TRUST S.L.**

Av. Peris y Valero n°4

46006 Valencia, Spain



# Documents / Resources

	<a href="#">klassfan MODULO REGULAR V2 Ceiling Fan [pdf]</a> User Manual REGULAR V2, SLIM, TENERIFE, MODULO REGULAR V2 Ceiling Fan, MODULO REGULAR V2, Ceiling Fan, Fan
---	---

## References

- [User Manual](#)

klassfan

Ceiling Fan, fan, klassfan, MODULO REGULAR V2, MODULO REGULAR V2 Ceiling Fan, REGULAR V2, Slim, TENERIFE

## Leave a comment

Your email address will not be published. Required fields are marked \*

Comment \*

Name

Email

Website

☐ Save my name, email, and website in this browser for the next time I comment.

**Post Comment**

## Search:

e.g. whirlpool wrf535swhz

**Search**

[Manuals+](#) | [Upload](#) | [Deep Search](#) | [Privacy Policy](#) | [@manuals.plus](#) | [YouTube](#)

This website is an independent publication and is neither affiliated with nor endorsed by any of the trademark owners. The "Bluetooth®" word mark and logos are registered trademarks owned by Bluetooth SIG, Inc. The "Wi-Fi®" word mark and logos are registered trademarks owned by the Wi-Fi Alliance. Any use of these marks on this website does not imply any affiliation with or endorsement.