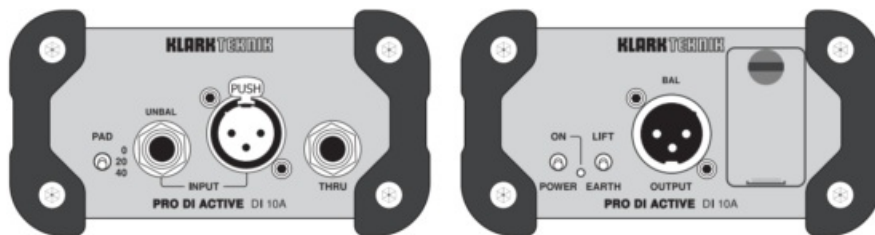


KLARK TEK ACTIVE DI Box with Midas Transformer User Guide

Contents

- 1 Quick Start Guide
- 2 PRO DI ACTIVE DI 10A
 - 2.1 Safety Instruction
 - 2.2 Controls
 - 2.3 How to insert the battery
 - 2.4 Specifications
 - 2.4.1 LEGAL DISCLAIMER
 - 2.4.2 LIMITED WARRANTY
 - 2.5 FEDERAL COMMUNICATIONS COMMISSION COMPLIANCE INFORMATION
- 3 Documents / Resources
 - 3.1 References
- 4 Related Posts

Quick Start Guide




PRO DI ACTIVE DI 10A

Active DI Box with Midas Transformer, Extended Dynamic Range and Phantom/Battery Operation

V 2.0

KLARKTEKNIK

Safety Instruction

1. Read these instructions.
2. Keep these instructions.
3. Heed all warnings.
4. Follow all instructions.
5. Do not use this apparatus near water.
6. Clean only with dry cloth.
7. Do not block any ventilation openings. Install in accordance with the manufacturer's instructions.
8. Do not install near any heat sources such as radiators, heat registers, stoves, or other apparatus (including amplifiers) that produce heat.
9. Use only attachments/accessories specified by the manufacturer.
-  10. Use only with the cart, stand, tripod, bracket, or table specified by the manufacturer, or sold with the apparatus. When a cart is used, use caution when moving the cart/apparatus combination to avoid injury from tip-over.



11. Correct disposal of this product: This symbol indicates that this product must not be disposed of with household waste, according to the WEEE Directive (2012/19/ EU) and your national law. This product should be taken to a collection center licensed for the recycling of waste electrical and electronic equipment (EEE). The mishandling of this type of waste could have a possible negative impact on the environment and human health due to potentially hazardous substances that are generally associated with EEE. At the same time, your cooperation in the correct disposal of this product will contribute to the efficient use of natural resources. For more information about where you can take your waste equipment for recycling, please contact your local city office, or your household waste collection service.

12. Do not install in a confined space, such as a book case or similar unit.

13. Do not place naked flame sources, such as lighted candles, on the apparatus.

Controls

(1) **PAD** - switch incrementally reduces the INPUT gain sensitivity to handle unusually loud input signals. The PAD switch offers gain reduction settings of 0 dB (guitar), 20 dB (line) or 40 dB (speaker).

(2) **INPUT** - connections accept balanced and unbalanced signals over cables with 1/4" TRS, 1/4" TS or XLR plugs.

(3) **THRU** - output sends out a copy of the INPUT signal and accepts connections from cables with 1/4" TRS or 1/4" TS plugs.

(4) **POWER** - switch turns the unit on and off.

(5) **ON** - LED lights up to indicate the following conditions:

- battery power active = LED blinks
- battery power off = LED off
- phantom power active = LED lights without blinking

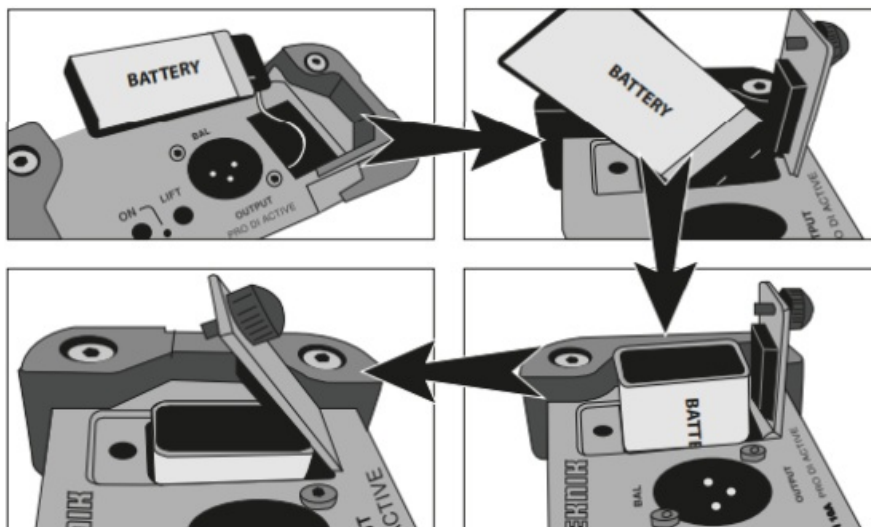
(6) **LIFT / EARTH** - switch can be used to connect or disconnect the ground link between the INPUT and OUTPUT jacks in order to reduce hum or prevent ground loops. The LIFT / EARTH switch's ability to reduce hum or prevent ground loops depends on the grounding of connected devices. When the switch is in the LIFT position, the ground connection between INPUT and OUTPUT is disconnected.

(7) **OUTPUT** - XLR jack sends out a balanced version of the INPUT signal to your mixing board or other processing device.

(8) **BATTERY COMPARTMENT** - contains the 9 V battery used to power the unit. Loosen the screw to open the compartment and replace the battery.

NOTE: In the event that phantom power fails, the unit will automatically switch to battery power.

How to insert the battery



Specifications

Audio Connections	
Input	1 x XLR, unbalanced 1 x 1/4" TS, unbalanced
Input Impedance	> 250 kΩ
Thru	1 x 1/4" TS, unbalanced
Output	1 x XLR, balanced
Load Impedance	> 600 Ω
Maximum Input level	+10 / +30 / +50 dBu
System	
Frequency Response	10 Hz to 90 kHz, ±3 dB
THD+N	< 0.02 % @ 1 kHz, 0 dBu
Noise Level	< -112 dBu
PAD Switch	0 / -20 / -40 dB
Power Supply	
Phantom power	18 V DC to 48 V DC
Battery	9 V Blockcell 6LR61
Dimension / Weight	
Dimensions (W x D x H)	118 x 120 x 64 mm (4.6 x 4.7 x 2.5")
Weight	0.56 kg (1.2 lbs)

LEGAL DISCLAIMER

Music Tribe accepts no liability for any loss which may be suffered by any person who relies either wholly or in part upon any description, photograph, or statement contained herein. Technical specifications, appearances and other information are subject to change without notice. All trademarks are the property of their respective owners. Midas, Klark Teknik, Lab Gruppen, Lake, Tannoy, Turbosound, TC Electronic, TC Helicon, Behringer, Bugera, Aston Microphones and Coolaudio are trademarks or registered trademarks of Music Tribe Global Brands Ltd. © Music Tribe Global Brands Ltd. 2024 All rights reserved.

LIMITED WARRANTY

For the applicable warranty terms and conditions and additional information regarding Music Tribe's Limited Warranty, please see complete details online at community.musictribe.com/support.

Batteries (battery pack or batteries installed) shall not be exposed to excessive heat such as sunshine, fire or the like.



WARNING

- As with all small batteries, the batteries used with this product should be kept away from small children who still put things in their mouths. If they are swallowed, promptly call your local poison control center.

- Always purchase the correct size and grade of battery most suitable for intended use.
- Replace all batteries of a set at the same time.
- Clean the battery contacts and also those of the device prior to battery installation.
- Ensure the batteries are installed correctly with the regard to polarity (+ and -).
- Always remove battery if consumed or if product is to be left unused for a long time.
- Replacement of a battery with an incorrect type that can defeat a safeguard! Replace only with the same or equivalent type!
- Risk of fire or explosion if the battery is replaced by an incorrect type.
- disposal of a battery into fire or a hot oven, or mechanically crushing or cutting of a battery, that can result in an explosion;
- Leaving a battery in an extremely high temperature surrounding environment that can result in an explosion or the leakage of flammable liquid or gas; and
- A battery subjected to extremely low air pressure that may result in an explosion or the leakage of flammable liquid or gas.
- Attention should be drawn to the environmental aspects of battery disposal.

FEDERAL COMMUNICATIONS COMMISSION COMPLIANCE INFORMATION

Klark Teknik

PRO DI ACTIVE DI 10A

Responsible Party Name: **Music Tribe Commercial NV Inc.**

Address: **122 E. 42nd St.1, 8th Floor NY, NY 10168, United States**

Email Address: legal@musictribe.com

PRO DI ACTIVE DI 10A

This equipment has been tested and found to comply with the limits for a Class B digital device, pursuant to part 15 of the FCC Rules. These limits are designed to provide reasonable protection against harmful interference in a residential installation. This equipment generates, uses and can radiate radio frequency energy and, if not installed and used in accordance with the instructions, may cause harmful interference to radio communications. However, there is no guarantee that interference will not occur in a particular installation. If this equipment does cause harmful interference to radio or television reception, which can be determined by turning the equipment off and on, the user is encouraged to try to correct the interference by one or more of the following measures:

- Reorient or relocate the receiving antenna.
- Increase the separation between the equipment and receiver.
- Connect the equipment into an outlet on a circuit different from that to which the receiver is connected.
- Consult the dealer or an experienced radio/TV technician for help.

This equipment complies with Part 15 of the FCC rules. Operation is subject to the following two conditions:

- (1) this device may not cause harmful interference, and
- (2) this device must accept any interference received, including interference that may cause undesired operation.

Important information:

Changes or modifications to the equipment not expressly approved by Music Tribe can void the user's authority to

use the equipment.



Hereby, Music Tribe declares that this product is in compliance with Directive 2014/30/EU, Directive 2011/65/EU and Amendment 2015/863/EU, Directive 2012/19/ EU, Regulation 519/2012 REACH SVHC and Directive 1907/2006/EC.


Full text of EU DoC is available at <https://community.musictribe.com/>

EU Representative: Music Tribe Brands DK A/S
Address: Gammel Strand 44, DK-1202 København K, Denmark




UK Representative: Music Tribe Brands UK Ltd.
Address: 8th Floor, 20 Farringdon Street London EC4A 4AB, United Kingdom

KLARKTEKNIK

Documents / Resources

	<p>KLARK TEK ACTIVE DI Box with Midas Transformer [pdf] User Guide PRO DI ACTIVE DI 10A, ACTIVE DI Box with Midas Transformer, ACTIVE DI, Box with Midas Transformer, Midas Transformer, Transformer</p>
--	--

References

-  [Music Tribe](#)
-  [Music Tribe](#)
-  [Music Tribe](#)
- [User Manual](#)

[Manuals+](#), [Privacy Policy](#)

This website is an independent publication and is neither affiliated with nor endorsed by any of the trademark owners. The "Bluetooth®" word mark and logos are registered trademarks owned by Bluetooth SIG, Inc. The "Wi-Fi®" word mark and logos are registered trademarks owned by the Wi-Fi Alliance. Any use of these marks on this website does not imply any affiliation with or endorsement.