

## Contents [ [hide](#) ]

- 1 [KKS](#)B Raspberry Pi 5 Touch Stand Display
- 2 [Product Specifications](#)
- 3 [Product Introduction](#)
- 4 [Detailed Product Information](#)
- 5 [How to Assemble the KKS](#)B Cases
- 6 [Disposal and Recycling](#)
- 7 [FAQs](#)
- 8 [Documents / Resources](#)
  - 8.1 [References](#)

# KKS

## KKS

B Raspberry Pi 5 Touch Stand Display

## Product Specifications

- **Product Name:** KKSBB Display Stand for Raspberry Pi 5 Touch Display V2 with Case for HATs
- **EAN:** 7350001162041
- **Standards for Inclusion:** RoHS Directive
- **Compliance:** RoHS Directive (2011/65/EU and 2015/863/EU), UK RoHS Regulations (S.I. 2012:3032)

### Read before use

This document contains important technical and safety information about the device, its safe use, and installation

**WARNINGS!** WARNING: CHOKING HAZARD- SMALL PARTS. NOT FOR CHILDREN UNDER 3 YEARS

## Product Introduction

This Raspberry Pi 5 metal case with the display stand offers superior protection while providing an optimized mounting solution for your display. This display stand with case is designed to work flawlessly with the Raspberry Pi 5 and the official Raspberry Pi Display 2. It also supports the official Raspberry Pi 5 cooler and most HATs, making it a versatile choice for various applications. An integrated external start button allows you to easily power your Raspberry Pi 5, eliminating the need to access internal components frequently.

**Note:** Electronics, HATs, and Cooler/Heatsink are NOT included.

## Detailed Product Information



- <https://kksb-cases.com/products/kksbdisplay-stand-for-raspberry=pi-5-touch-display->

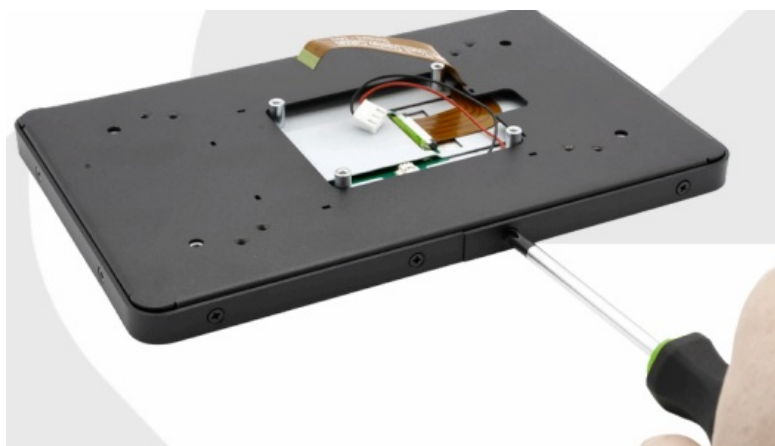
[v2-with-case-for-hats](#)



## How to Assemble the KKS Cases



- <https://kksb-cases.com/pages/assembly=instruction-kksb-case-for-raspberry-pi-5-touch-display-v2>



## Standards for Inclusion: RoHS Directive

This product meets the requirements of the RoHS Directive (2011/65/EU and 2015/863/EU) and the UK RoHS Regulations (S.I. 2012:3032).

## Disposal and Recycling

To protect the environment and human health, and to conserve natural resources, it is important that you dispose of the KKSB Cases responsibly. This product contains electromechanical components that can be harmful if not disposed of properly.

- Do not dispose of the KKSB Cases as unsorted municipal waste.
- Take the module to a designated electronic waste (e-waste) recycling facility.
- Do not incinerate or dispose of the module in regular household waste.

By adhering to these disposal and recycling guidelines, you can help ensure that the KKSB Cases is disposed of in an environmentally responsible manner.

**WARNING!** Any changes or modifications not expressly approved by the party responsible for compliance could void the user's authority to operate the equipment.

- **Manufacturer:** KKSB Cases AB
- **Brand:** KKSB Cases
- **Address:** Hjulmakarevägen 9, 443 41 Grabo, Sweden
- **Tel:** +46 76 004 69 04
- **t-mail:** [support@kksb.se](mailto:support@kksb.se)
- **Official website:** <https://kksb-cases.com/> Changes in the contact information data are published by the manufacturer on the official website.

## FAQs

**Q: Are electronics, HATs, and Cooler/Heatsink included with the product?**

A: No, Electronics, HATs, and Cooler/Heatsink are NOT included with the KKSB Display Stand.

## Documents / Resources



## [KKSB Raspberry Pi 5 Touch Stand Display \[pdf\]](#) User Manual

### Raspberry Pi 5 Touch Stand Display, Raspberry Pi 5, Touch Stand Display, Stand Display

## References

- [User Manual](#)

KKSB, Raspberry Pi 5, Raspberry Pi 5 Touch Stand Display, Stand Display, Touch Stand

KKSB Display

## Leave a comment

Your email address will not be published. Required fields are marked \*

Comment \*

Name

Email

Website

☐ Save my name, email, and website in this browser for the next time I comment.

**Post Comment**

## Search:

e.g. whirlpool wrf535swhz

Search

[Manuals+](#) | [Upload](#) | [Deep Search](#) | [Privacy Policy](#) | [@manuals.plus](#) | [YouTube](#)

This website is an independent publication and is neither affiliated with nor endorsed by any of the trademark owners. The "Bluetooth®" word mark and logos are registered trademarks owned by Bluetooth SIG, Inc. The "Wi-Fi®" word mark and logos are registered trademarks owned by the Wi-Fi Alliance. Any use of these marks on this website does not imply any affiliation with or endorsement.