


[Home](#) » [KKS](#)B » **KKS**B Pi 5 Case For Raspberry Touch Display 2 Desktop Orientation User  
Manual 

## Contents [ [hide](#) ]

- [1 KKS](#)B Pi 5 Case For Raspberry Touch Display 2 Desktop Orientation
- [2](#) Read before use
- [3](#) Detailed Product Information
- [4](#) How to Assemble the KKSB Cases
- [5](#) Disposal and Recycling
- [6](#) FAQs
- [7](#) Documents / Resources
  - [7.1](#) References

# KKS

## KKS

B Pi 5 Case For Raspberry Touch Display 2 Desktop Orientation

### Read before use

This document contains important technical and safety information about the device, and its safety use and installation

**WARNINGS!** WARNING: CHOKING HAZARD- SMALL PARTS. NOT FOR CHILDREN UNDER 3 YEARS

## Product Introduction

Designed specifically for the Raspberry Pi 5 and the official Raspberry Pi Touch Display 2, this case ensures a secure and precise fit, protecting your components while maintaining a compact design. It features four sturdy feet, allowing it to sit securely on desks, counters, or tabletops, making it an excellent choice for point-of-sale systems, reception displays, or smart home dashboards. Additionally, the case includes a convenient external start button, enabling effortless power control without opening the enclosure.

**Note:** Electronics, HATs, and Cooler/Heatsink are NOT included.

## Detailed Product Information



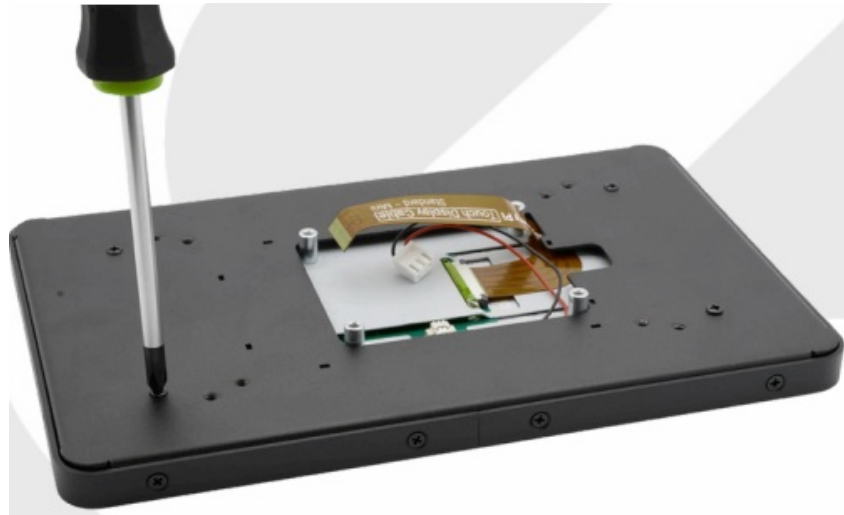
- <https://kksb-cases.com/products/kksb-case-for-raspberry-pi-5-touch-display-2-desktop-orientation>



## How to Assemble the KKS Cases



<https://kksb-cases.com/pages/assembly=instruction-kksb-case-for-raspberry-pi-5-touch-display-v2-low-profile>



### Standards for Inclusion: RoHS Directive

This product meets the requirements of the RoHS Directive (2011/65/EU and 2015/863/EU) and the UK RoHS Regulations (S.I. 2012:3032).

### Disposal and Recycling

To protect the environment and human health, and to conserve natural resources, it is important that you dispose of the KKSB Cases responsibly. This product contains electromechanical components that can be harmful if not disposed of properly.

- Do not dispose of the KKSB Cases as unsorted municipal waste.
- Take the module to a designated electronic waste (e-waste) recycling facility.
- Do not incinerate or dispose of the module in regular household waste.

By adhering to these disposal and recycling guidelines, you can help ensure that the KKSB Cases is disposed of in an environmentally responsible manner.

**WARNING!** Any changes or modifications not expressly approved by the party responsible for compliance could void the user's authority to operate the equipment.

- **Manufacturer:** KKSB Cases AB
- **Brand:** KKSB Cases
- **Address:** Hjulmakarevägen 9, 443 41 Grabo, Sweden  
**Tel:** +46 76 004 69 04
- **E-mail:** [support@kksb.se](mailto:support@kksb.se)

- **Official website:** <https://kksb-cases.com/>

Changes in the contact information data are published by the manufacturer on the official website.

**FAQs**

Can this case be used with Raspberry Pi 5 Touch Display 2?

Yes, this case is designed specifically for Raspberry Pi 5 Touch Display 2 in desktop orientation.


Is the assembly difficult?

Assembly instructions are provided on the official website to guide you through the process.

How should I dispose of the case?

Dispose of the case at designated electronic waste recycling facilities to protect the environment.

**Documents / Resources**

	<p><a href="#">KKSB Pi 5 Case For Raspberry Touch Display 2 Desktop Orientation [pdf]</a></p> <p>User Manual</p> <p>Pi 5 Case For Raspberry Touch Display 2 Desktop Orientation, Pi 5, Case For Raspberry Touch Display 2 Desktop Orientation, Raspberry Touch Display 2 Desktop Orientation, Touch Display 2 Desktop Orientation, Desktop Orientation</p>
---	--

**References**

- [User Manual](#)

---

## Leave a comment

Your email address will not be published. Required fields are marked \*

Comment \*

Name

Email

Website

☐ Save my name, email, and website in this browser for the next time I comment.

Post Comment

Search:

e.g. whirlpool wrf535swhz

Search

Manuals+ | Upload | Deep Search | Privacy Policy | @manuals.plus | YouTube

This website is an independent publication and is neither affiliated with nor endorsed by any of the trademark owners. The "Bluetooth®" word mark and logos are registered trademarks owned by Bluetooth SIG, Inc. The "Wi-Fi®" word mark and logos are registered trademarks owned by the Wi-Fi Alliance. Any use of these marks on this website does not imply any affiliation with or endorsement.