



KKSB Arduino Uno R4 Minima and Wi-Fi Case User Manual

[Home](#) » [KKSB](#) » KKSB Arduino Uno R4 Minima and Wi-Fi Case User Manual 

KKSB

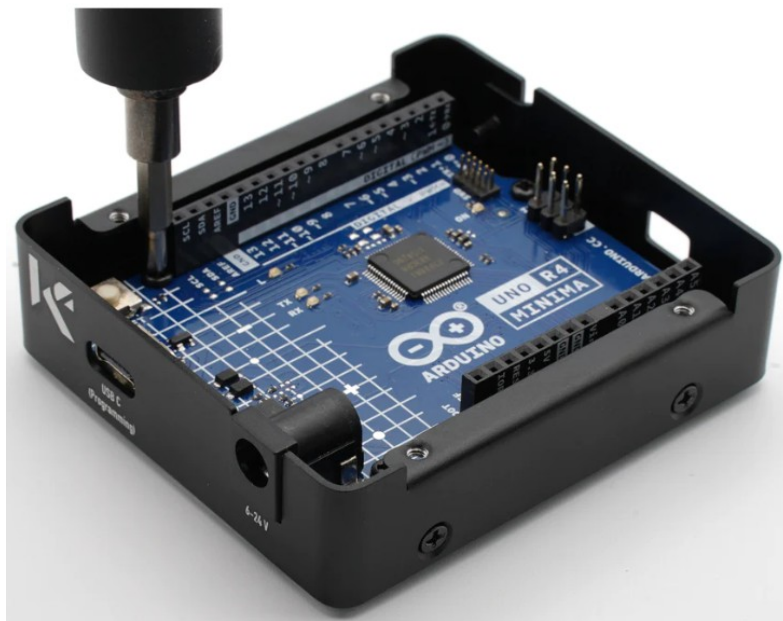
User Manual

Assembly instruction KKSB Arduino Uno R4 Minima and Wifi Case

1. Mount the rubber feet.



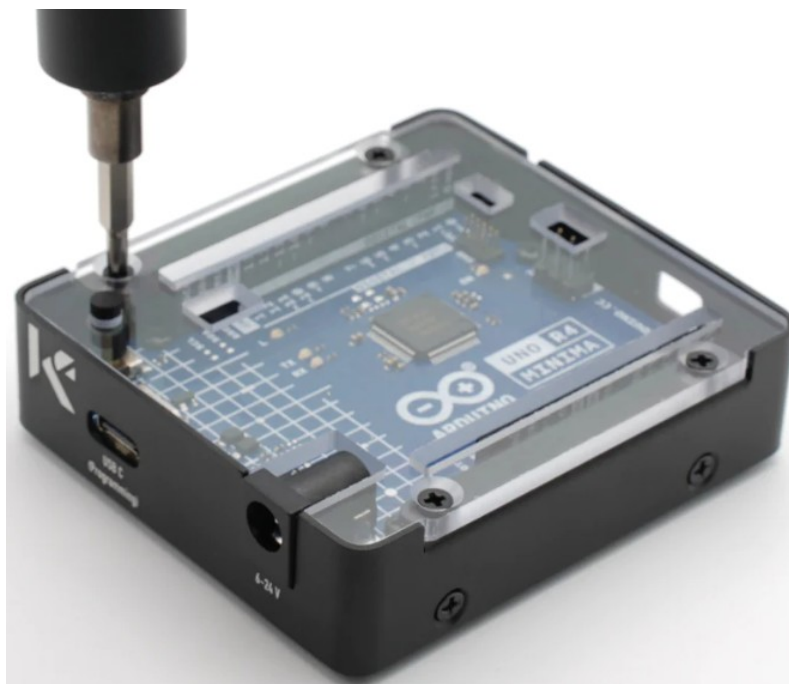
2. a) Insert the board.
b) Secure with the 4 pan head screws



3. Insert the push button from the underside of the lid like in the picture.



4. Secure the lid with the 4 countersunk screws.




KKSB

Contents

- 1 Documents / Resources
- 1.1 References

Documents / Resources

	<p>KKSB Arduino Uno R4 Minima and Wi-Fi Case [pdf] User Manual</p> <p>UNO R4 Minima, UNO R4 WiFi, Arduino Uno R4 Minima and Wi-Fi Case, Uno R4 Minima and Wi-Fi Case, R4 Minima and Wi-Fi Case, Minima and Wi-Fi Case, Wi-Fi Case, Case</p>
---	---

References

- [User Manual](#)

Manuals+. [Privacy Policy](#)

This website is an independent publication and is neither affiliated with nor endorsed by any of the trademark owners. The "Bluetooth®" word mark and logos are registered trademarks owned by Bluetooth SIG, Inc. The "Wi-Fi®" word mark and logos are registered trademarks owned by the Wi-Fi Alliance. Any use of these marks on this website does not imply any affiliation with or endorsement.