



## KKM K4W UWB Beacon Instructions

[Home](#) » [KKM](#) » KKM K4W UWB Beacon Instructions 

### Contents

- [1 KKM K4W UWB Beacon](#)
- [2 Product Information](#)
- [3 Product Usage Instructions](#)
- [4 Description](#)
- [5 BASIC OPERATION](#)
- [6 How it works](#)
- [7 FCC Note](#)
- [8 Documents / Resources](#)
  - [8.1 References](#)
- [9 Related Posts](#)



**KKM K4W UWB Beacon**



## Product Information

### Specifications

- Technology: Ultra-wideband (UWB)
- Usage: Asset tracking
- Mounting: Screws or adhesive tape
- Waterproof Rating: IP67
- Indoor Use Only
- Compliance: FCC Part 15

### Product Usage Instructions

#### Power On/Off

The product is shipped powered off. To power on the device:

1. Unscrew the cover.
2. Press the button for more than 3 seconds; the LED will flash for 30 seconds.

#### To power off the device:

- Click “power off” in the APP interface, or
- Press the button for 5 seconds.

#### How it Works

To use the K4W Asset Tag:

1. Use the app/UWB Anchor to scan/connect to the K4W signal.
2. The APP/Anchor receives data and processes it to determine the location of the asset.

## Testing App – KKM UWB

Download the testing app “KKM UWB” from the App Store: [KKM UWB App](#)

## Contact Information

For technical support or questions about the K4W, contact sales at [sales@kkmcn.com](mailto:sales@kkmcn.com). For more product information, visit our website at [www.kkmcn.com](http://www.kkmcn.com)

## FCC Note

This equipment complies with FCC Part 15 regulations for digital devices and is designed to reduce interference in residential installations.

## FAQ

### Q: Can the K4W Asset Tag be used outdoors?

A: No, the device is designed for indoor use only. Outdoor operation is prohibited and may result in legal penalties.

## K4W User Manual

## Description

K4W Asset Tag use Ultra-wideband (UWB) technology, provides a general-purpose asset tag designed to provide uniform RF coverage for asset tracking.

It is often used to track high-value assets or simply assets whose real-time location and accuracy is critical.

The tag is easily mounted on an asset using screws or adhesive tape.

It is IP67 waterproof. It is designed for accurate asset tracking for indoor use

This device complies with Part 15 of the FCC Rules. Operation is subject to the following two conditions:

1. This device may not cause harmful interference, and
2. This device must accept any interference received, including interference that may cause undesired operation.

This equipment may only be operated indoors.

Operation outdoors is in violation of 47 U.S.C. 301 and could subject the operator to serious legal penalties.

This device may not be employed for the operation of toys. Operation onboard an aircraft, a ship or a satellite is prohibited (15.521(a)).



① Unscrew cover



② Open the cover



③ Press the button for 3 seconds

## BASIC OPERATION

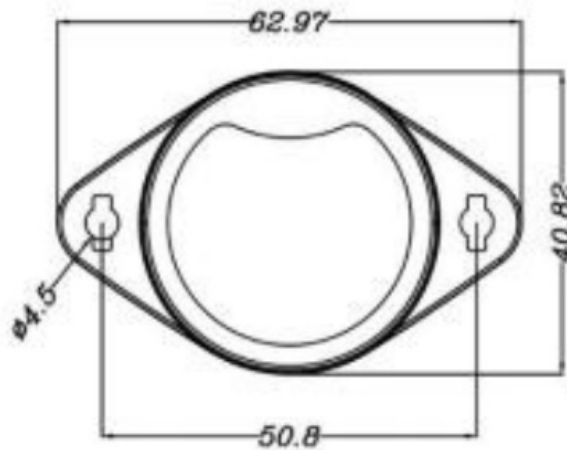
Power on/off : The product is powered off and shipped by default.

Please unscrew the cover, pressing the button for more than 3 seconds will turn on the device while the LED will flash for 30 seconds.

The shutdown operation can be done by clicking “power off” in the APP interface or pressing the button for 5 seconds.

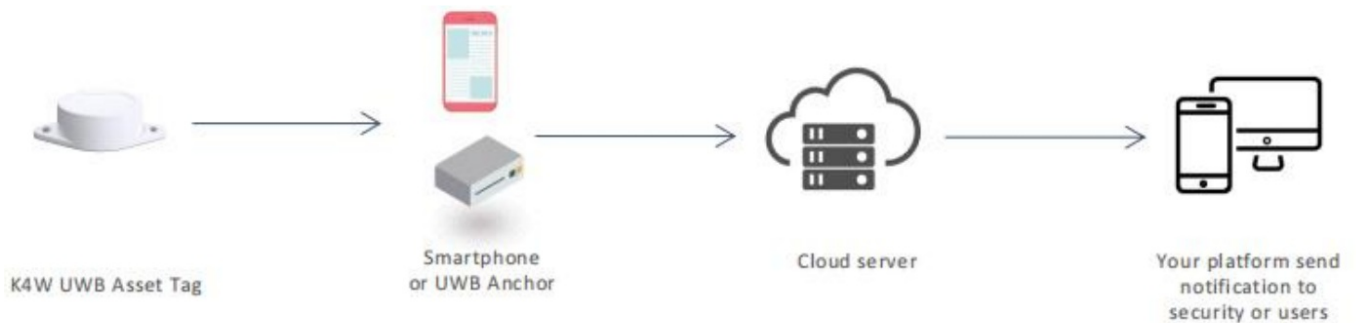
## Installation method

1. Double-sided
2. Tape Screws
3. Magnetic adhesive sticker
4. Zip tie mount



Unit:mm

## How it works



Using the app/UWB Anchor to scan/connect the K4W' signal, then the APP/Anchor receive its data and handle the data to reach the location usage.

## Testing App KKM UWB

Download <https://apps.apple.com/us/app/kkm-uwbiid6475756984>

For more tech support/questions about our K4W, you can feel free to contact our sales by [sales@kkmcn.com](mailto:sales@kkmcn.com)  
For more product information, you can visit our web: [www.kkmcn.com](http://www.kkmcn.com)

**Note:** Any changes or modifications not expressly approved by the party responsible for compliance could void the user's authority to operate the equipment.

## FCC Note

This equipment has been tested and found to comply with the limits for a Class B digital device, pursuant to part

15 of the FCC Rules.

These limits are designed to provide reasonable protection against harmful interference in a residential installation.

This equipment generates, uses and can radiate radio frequency energy and, if not installed and used in accordance with the instructions, may cause harmful interference to radio communications. However, there is no guarantee that interference will not occur in a particular installation.

If this equipment does cause harmful interference to radio or television reception, which can be determined by turning the equipment off and on, the user is encouraged to try to correct the interference by one or more of the following measures:


- Reorient or relocate the receiving antenna.
- Increase the separation between the equipment and receiver.
- Connect the equipment into an outlet on a circuit different from that to which the receiver is connected.
- Consult the dealer or an experienced radio/TV technician for help.

(c) The provisions of paragraphs (a) and (b) of this section do not apply to digital devices exempt from technical standards under 15.103.

(d) For systems containing multiple digital devices, the declaration shown in paragraph (a) or (b) of this section only needs to be included in the user manual of the main control unit.

(e) If the manual is only provided in a form other than paper form, such as on a computer disk or through the Internet, the information required by this section may be included in the manual in that alternative form, provided that the user can reasonably expect to have the ability to access the information in that form

## Documents / Resources

	<a href="#">KKM K4W UWB Beacon</a> [pdf] Instructions K4W, K4W UWB Beacon, UWB Beacon, Beacon
---	--

## References

- [KKM | IoT Devices ODM & OEM Solutions Manufacturer](#)
- [User Manual](#)

[Manuals+](#), [Privacy Policy](#)

This website is an independent publication and is neither affiliated with nor endorsed by any of the trademark owners. The "Bluetooth®" word mark and logos are registered trademarks owned by Bluetooth SIG, Inc. The "Wi-Fi®" word mark and logos are registered trademarks owned by the Wi-Fi Alliance. Any use of these marks on this website does not imply any affiliation with or endorsement.