




## Kkm K11 Beacon Instructions

[Home](#) » [KKM](#) » Kkm K11 Beacon Instructions 

### Contents

- [1 Kkm K11 Beacon](#)
- [2 App Instruction](#)
- [3 Download KBeacon App](#)
- [4 How to connect KBeacon device to KBeacon App](#)
- [5 How to configure KBeacon](#)
- [6 Save as template and load template](#)
- [7 Unconnectable mode](#)
- [8 System Info](#)
- [9 Remark](#)
- [10 FCC](#)
- [11 Documents / Resources](#)
- [12 Related Posts](#)



### Kkm K11 Beacon



### App Instruction

### Revision History

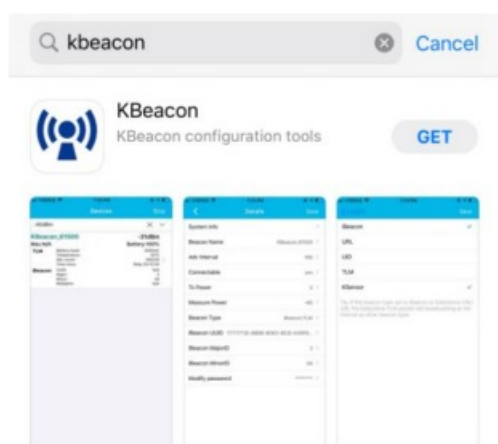
Version	Date	Change Description	Author
V1.0	2017/11/12	Initial draft for KBeaconTools	Adam
V1.1	2018/02/23	Name updating	Adam
V1.2	2018/03/08	Updating iBeacon/Eddystone URL/Eddystone UID/Eddystone TLM configuration	Adam
V1.2	2018/03/27	Updating RSSI value setting	Adam
V2.0	2018/10/02	App Interface updating	Claire
V3.0	2019/10/15	Name updating&App Interface updating	Claire

## CONFIDENTIAL

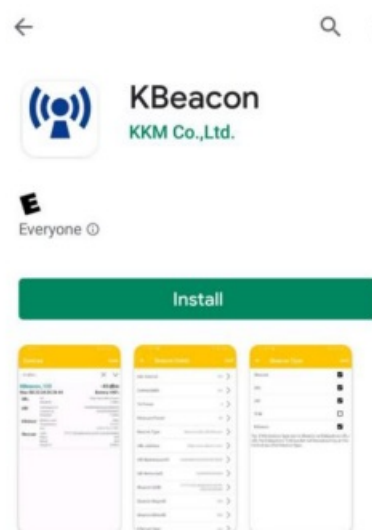
This document is the property of KKM Co.Ltd. KKM retains all rights pertaining to industrial property including patent applications. This document is only for the recipient(s) which authorized by KKM. It contains confidential information and any use, dissemination, distribution, or reproduction of this message by unintended recipients is not authorized and may be unlawful.

## Download KBeacon App

Download the App 'KBeacon' from iOS App Store or Android Google Play or scan the QR code below to install.



iOS App



Android App

## Minimum requirements

A mobile phone with Bluetooth 4.0 support is needed. For Android devices, Android version 5.1 or newer. For iOS

devices, iOS version 10.0 or newer.

## How to connect KBeacon device to KBeacon App

Kindly note: Please make sure your KBeacon device is with battery already. 'KBeacon' App currently only works with KBeacon model K21, K3, K8 Enable your smart phone's Bluetooth and run the App 'KBeacon'.

Turn on KBeacon

- KBeacon with button (Including model K1/K11/K21/K5)

The factory setting of KBeacon with button is OFF. Long press the button(till the LED light starts flashing) to turn KBeacon ON.

- KBeacon without button (Including model K51/K3/K8)

The factory setting of KBeacon without button is ON.



K1/K11



K21



K3



K5/51



K8

### Connect KBeacon

Let's use a K21 (MAC Address: DD330A013476) to demonstrate:



While KBeacon is ON, KBeacon App can scan the device's Bluetooth signal, then the device will be displayed on the device list page.

Find the corresponding KBeacon on the App according to its MAC address, Tap it , it will start connecting and jump to the configuration page (see pictures below).

Devices		Stop
Tap to edit filter		
<b>KBeacon_35576</b> -74dBm		
Mac:N/A	Mac:N/A	
TLM	Battery level: 3050mV >	
	Temperature: 23°C	
	Adv count: 17640260	
	Time since: 20day 12:26:31	
<b>KBeacon_8202</b> 127dBm		
Mac:N/A	Mac:N/A	
TLM	Battery level: 3050mV >	
	Temperature: 33°C	
	Adv count: 17377060	
	Time since: 20day 05:09:45	
<b>KBeacon_6510</b> 127dBm		
Mac:N/A	Mac:N/A	
TLM	Battery level: 3050mV >	
	Temperature: 27°C	
	Adv count: 17643060	
	Time since: 20day 12:31:14	
<b>KBeacon_4656</b> -76dBm		
Mac:N/A	Mac:N/A	
TLM	Battery level: 2378mV >	
	Temperature: 36°C	
	Adv count: 28466290	
	Time since: 331day 02:35:18	
<b>KBeacon_13430</b> -23dBm		
Mac:76:34:01:0A:33:DD	Battery:83%	
iBeacon	UUID: N/A >	
	Major: 1	
	Minor: 1	
	RSSI@1m: N/A	
<b>DD330A019364</b> -77dBm		
Mac:N/A	Mac:N/A	
TLM	Battery level: 3050mV >	
	Temperature: 26°C	
	Adv count: 7066920	
	Time since: 8day 05:15:09	



Details		Save
System Info		
Beacon Name	KBeacon_13430	>
Adv Interval	1000	>
Connectable	yes	>
Tx Power	0	>
Measure Power	-59	>
Beacon Type	iBeacon	>
iBeacon UUID	7777772E-6B6B-6D63-6E2E-636F...	>
iBeacon MajorID	1	>
iBeacon MinorID	1	>
Modify password	*****	>

If there are too many KBeacon devices shown on the device list, but you want to search certain one KBeacon easily, try to filter name or filter rssi.

Devices		Stop
Tap to edit filter		
Filter name		
Filter rssi: <input type="range"/> -40dBm		
UID	Time since: 4day 17:25:55	
	NamespaceID: 0x68B6D636E2E636F6D05	
	InstanceID: 0x0000000000000008	
	RSSI@0m: -13dBm >	
KSensor	Battery level: 3019mV	
	Temperature: 27°C	
	Acc: N/A	
iBeacon	UUID: N/A	
	Major: 50	
	Minor: 12	
	RSSI@1m: N/A	
URL	Url: http://www.kkmcn.com	
	RSSI@0m: -13dBm	
<b>KBeacon_13426</b> -98dBm		
Mac:N/A	Battery:100%	
iBeacon	UUID: N/A >	
	Major: 1	
	Minor: 1	



Devices		Stop
-30dBm		
<b>KBeacon_13430</b> -16dBm		
Mac:76:34:01:0A:33:DD	Battery:83%	
iBeacon	UUID: N/A >	
	Major: 1	
	Minor: 1	
	RSSI@1m: N/A	

Put the KBeacon device close to your phone(within 10cm range). Tap 'Filter rssi' and set the rssi to -30~-40dBm, then only the KBeacon next to your phone can be scanned and shown on the device list page.

## How to configure KBeacon

KBeacon supports five protocols :

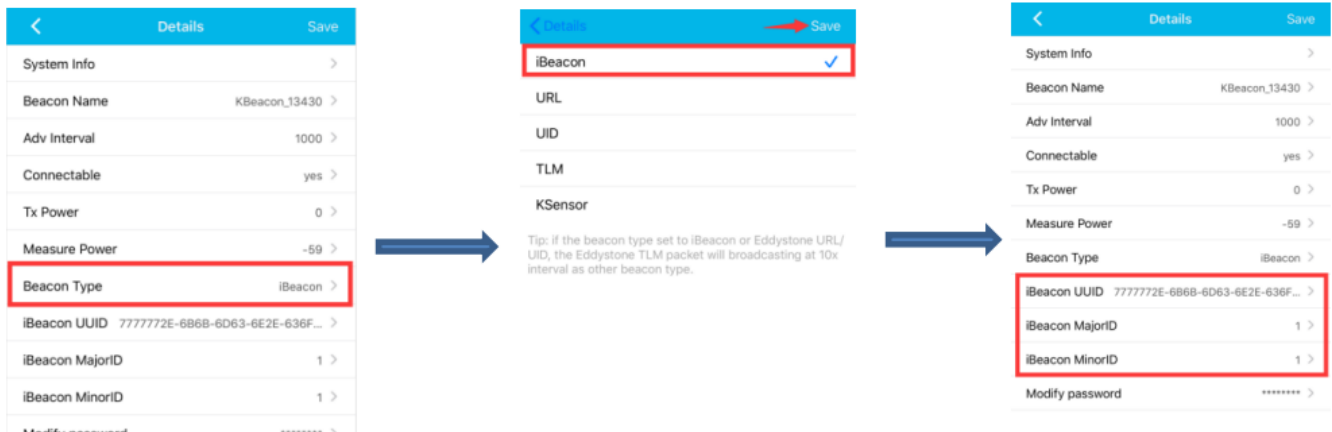
- iBeacon
- Eddystone URL

- Eddystone UID
- Eddystone TLM
- KSensor

## How to configure iBeacon and Eddystone

(Take iBeacon as an example)

Tap: Beacon Type—> iBeacon—> Save—> Return

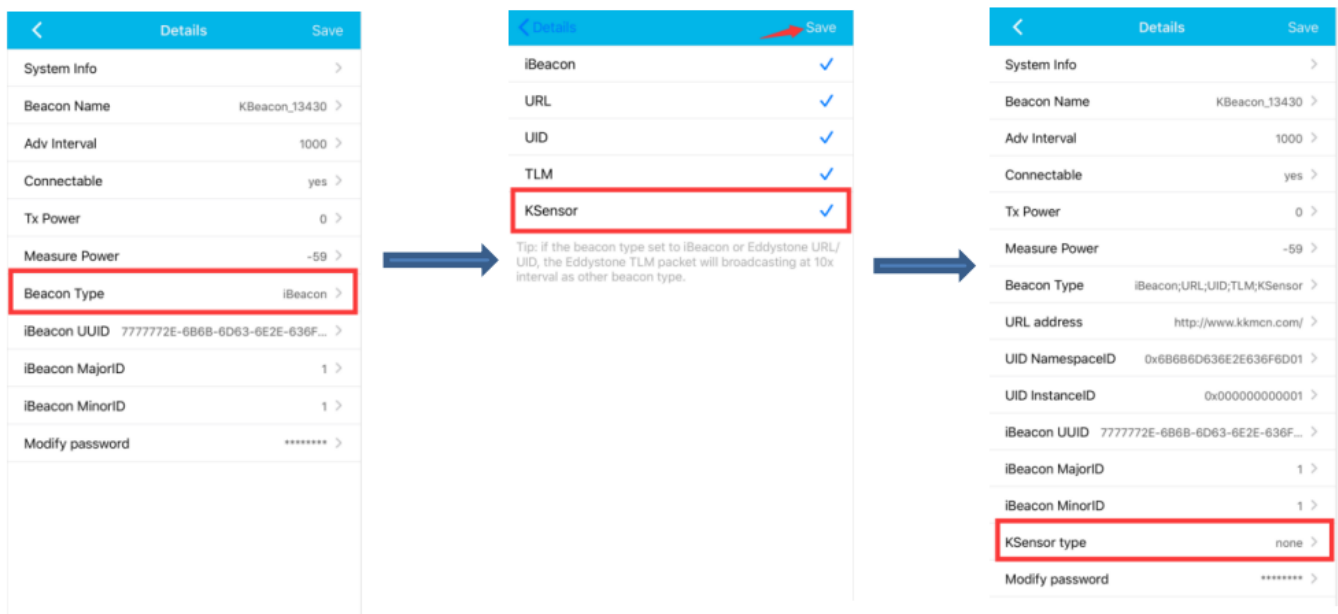


UUID, Major ID, Minor ID can also be configured in the App. Eddystone URL, UID, TLM can be modified by above same steps

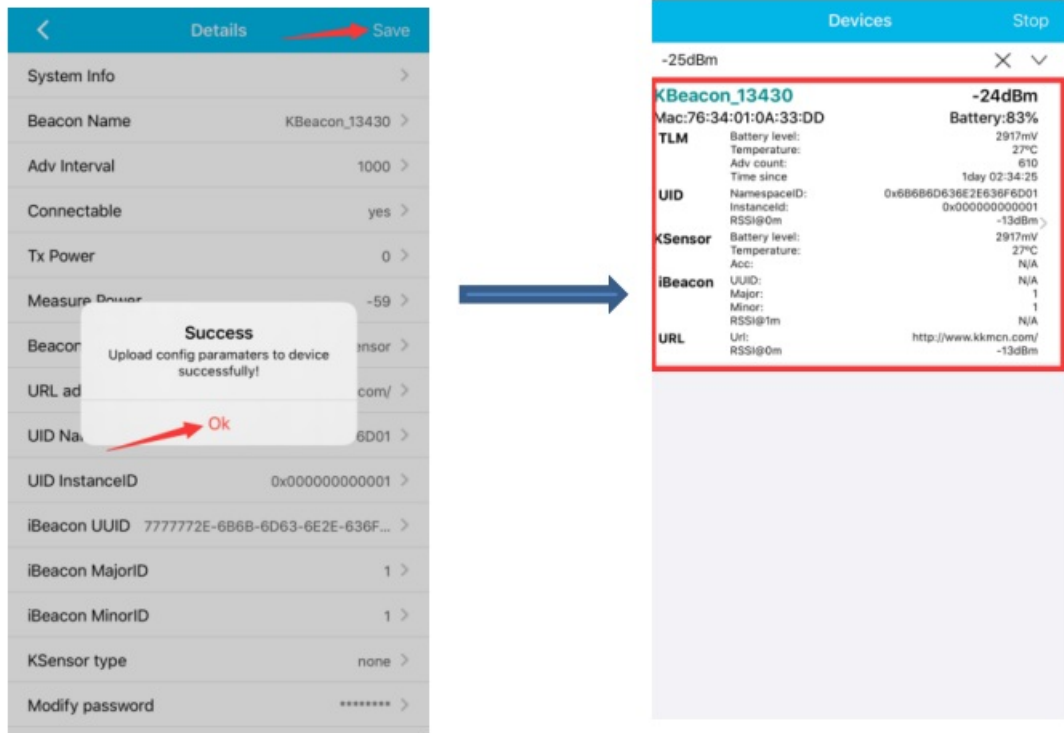
## How to configure KSensor

KSensor is KKM self-defined protocol, it includes battery level and temperature sensor and acceleration sensor information.

Tap: Beacon Type—> KSensor—> Save—> Return



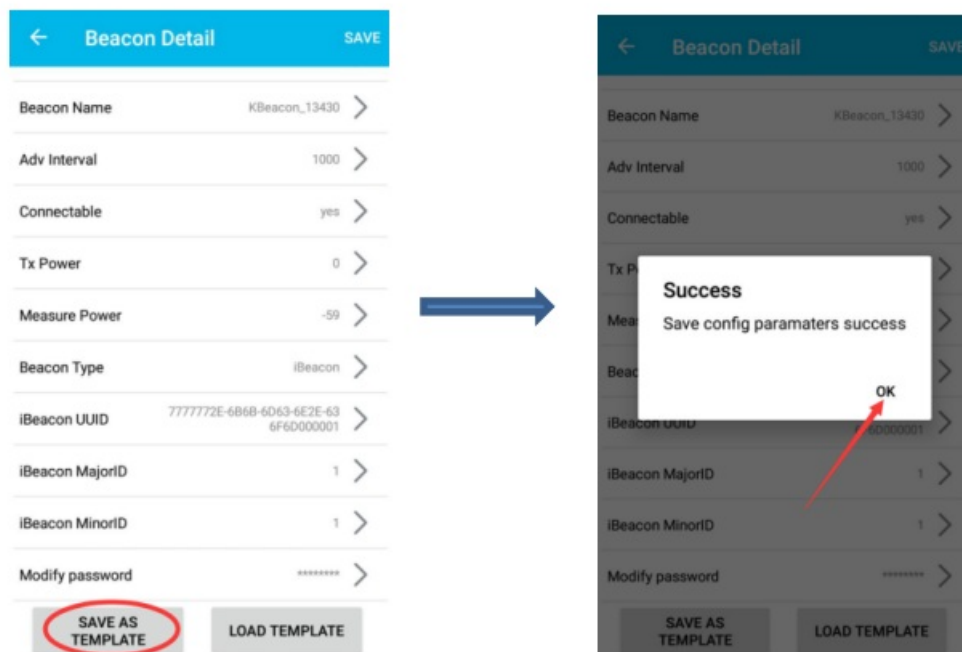
After the parameters that need to be changed are modified, Tap: Save—> Ok—> return, and the all the parameters can be shown on the scan list.



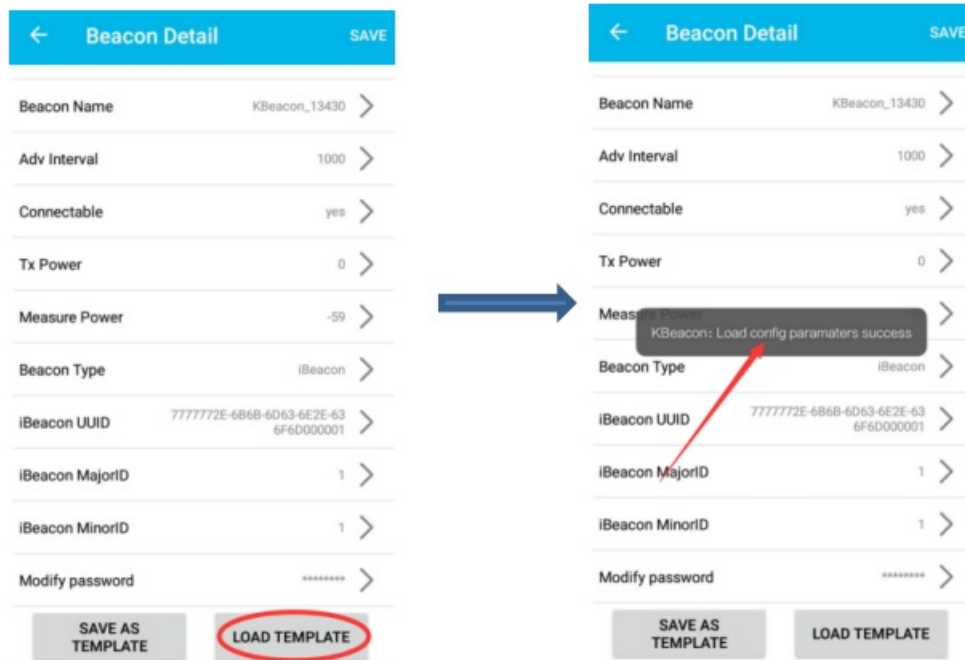
## Save as template and load template

If a batch of KBeacon devices are to be configured with the same parameters, 'SAVE AS TEMPLATE' and 'LOAD TEMPLATE' functions can help saving a lot of time.

### Step 1: Configure one KBeacon and Save template

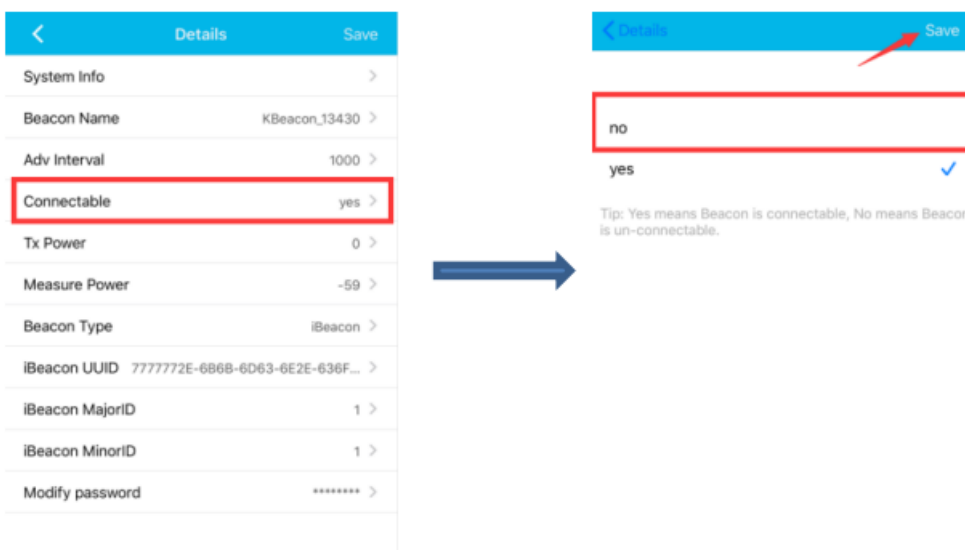


### Step 2: For the rest of the KBeacon in the same batch, load template to every one of them.



## Unconnectable mode

KBeacon can be set unconnectable. Tap: Connectable—> no—> Save.



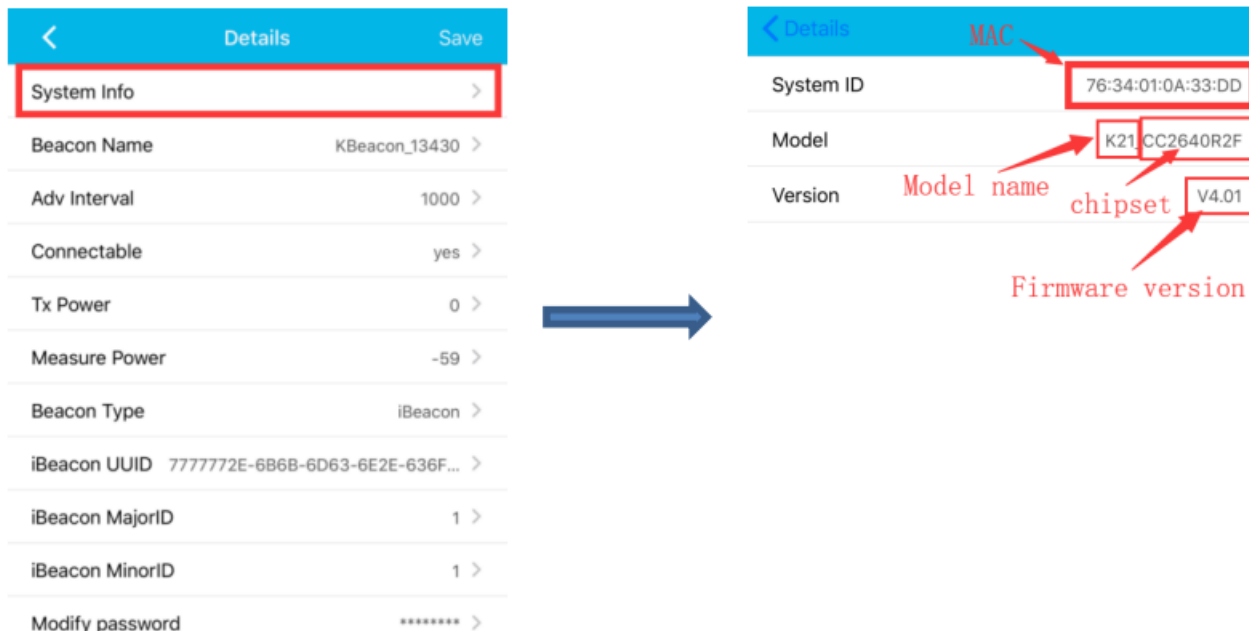
Please note: If KBeacon is set to be unconnectable, this KBeacon signal can be scanned, but it will not be able to be connected and configured. ( in case other people connect KBeacon and configure the parameter without permission).

**Question: How can I configure KBeacon again if it was set to be unconnectable?**

- For KBeacon with button: click the button or re-install battery.
- For KBeacon without button: Re-install battery

## System Info

'System Info' describes the detailed information of the connected KBeacon device.



## Remark

Parameters such as Beacon Name, Advertising Interval, Tx power etc can be easily configured on KBeacon App. These parameters configuration won't be demonstrated here. If there are any questions, please feel free to contact KKM.Thank you for your support.

## FCC

NOTE: This equipment has been tested and found to comply with the limits for a Class B digital device, pursuant to part 15 of the FCC Rules. These limits are designed to provide reasonable protection against harmful interference in a residential installation. This equipment generates uses and can radiate radio frequency energy and, if not installed and used in accordance with the instructions, may cause harmful interference to radio communications. However, there is no guarantee that interference will not occur in a particular installation. If this equipment does cause harmful interference to radio or television reception, which can be determined by turning the equipment off and on, the user is encouraged to try to correct the interference by one or more of the following measures:

- Reorient or relocate the receiving antenna.
- Increase the separation between the equipment and receiver.
- Connect the equipment into an outlet on a circuit different from that to which the receiver is connected.
- Consult the dealer or an experienced radio/TV technician for help

Changes or modifications not expressly approved by the party responsible for compliance could void the user's authority to operate the equipment.

This device complies with Part 15 of the FCC Rules. Operation is subject to the following two conditions:

1. this device may not cause harmful interference, and
2. this device must accept any interference received, including interference that may cause undesired operation.

## Documents / Resources



[Kkm K11 Beacon](#) [pdf] Instructions  
K8, 2AXZL-K8, 2AXZLK8, K11 Beacon, K11 Beacon

[Kkm K11 Beacon](#) [pdf] Instructions  
K11, 2AXZL-K11, 2AXZLK11, K11 Beacon, Beacon