



KitchenAid KGBP734RXX Batch Feed Garbage Disposal User Guide

[Home](#) » [KitchenAid](#) » KitchenAid KGBP734RXX Batch Feed Garbage Disposal User Guide 

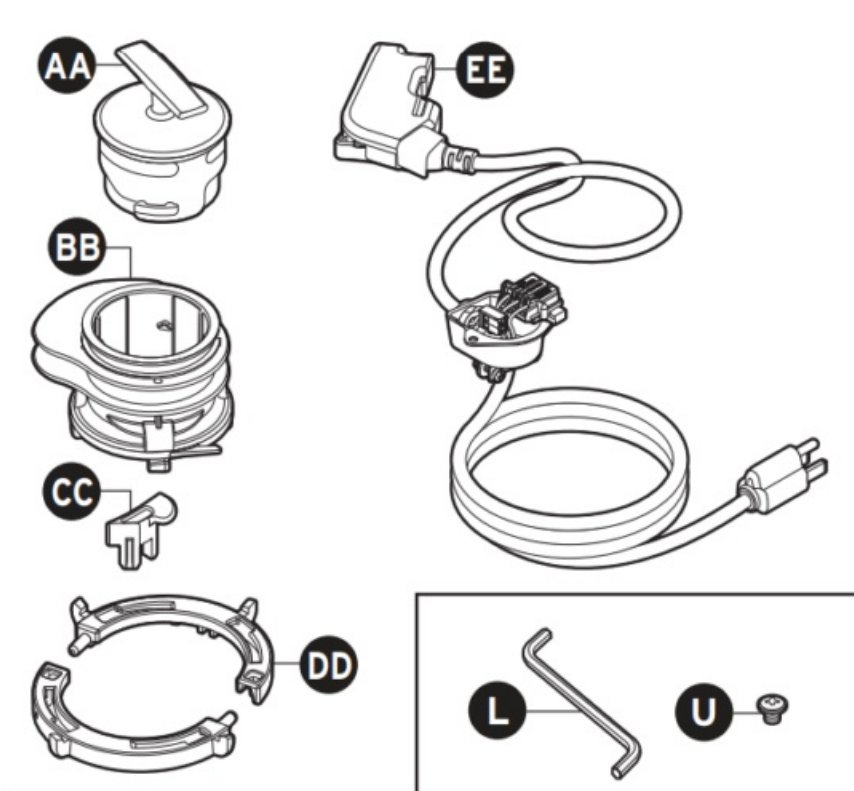
KitchenAid® EZ Connect Batch Feed Accessory Kit Installation Instructions For use with KitchenAid KGBP734RXX



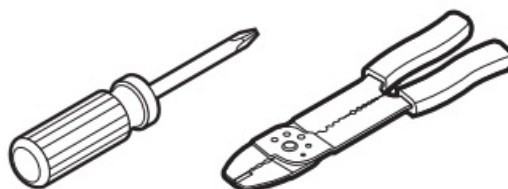
Contents

- 1 Includes
- 2 Safety Information
- 3 OPERATING INSTRUCTIONS
- 4 Documents / Resources
 - 4.1 References
- 5 Related Posts

Includes



Tools and Materials Needed (not included)



- AA.** Stopper
- BB.** Anti-vibration Tube Extension
- CC.** Mounting Clip
- DD.** Collar Rings
- EE.** Power Cord / Magnetic Switch / Mount Plate Assembly

Supplied with Disposer

- L.** Wrench Ette
- U.** Ground Screw

Safety Information

⚠ DANGER indicates a hazardous situation which, if not avoided, will result in death or serious injury.

⚠ WARNING indicates a hazardous situation which, if not avoided, could result in death or serious injury.

⚠ CAUTION indicates a hazardous situation which, if not avoided, could result in minor or moderate injury.

NOTICE is used to address practices not related to personal injury.

SAFETY INSTRUCTIONS (or equivalent) signs indicate specific safety related instructions or procedures.

⚠ WARNING Read these instructions thoroughly. Failure to follow the Installation, Operating and User-Maintenance Instructions may result in personal injury or property damage.

⚠ WARNING SHOCK HAZARD Turn off electric power at circuit breaker or fuse box.

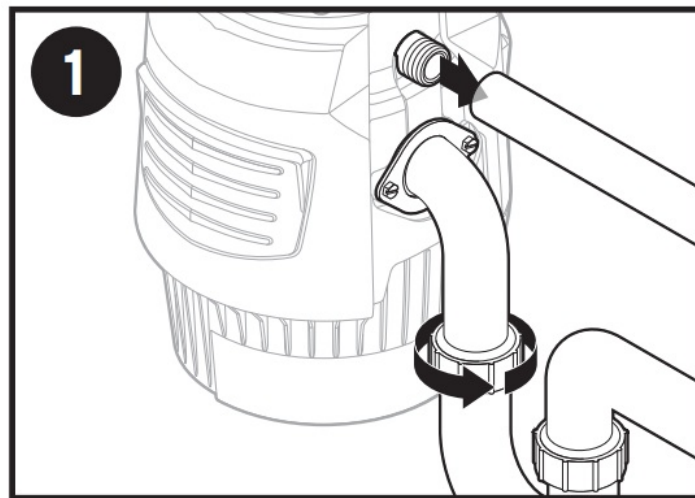
NOTICE

- Using a metallic cleaning pad may damage the plastic throat of disposer

⚠ WARNING SHOCK HAZARD

Turn off electric power at circuit breaker or fuse box.

Existing Disposer

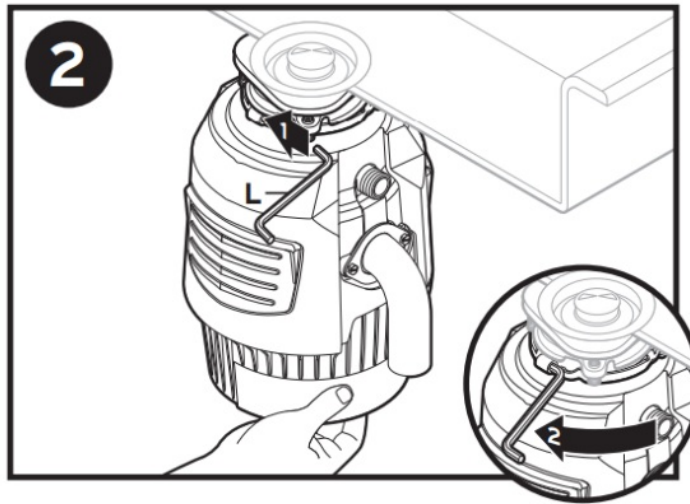


If you are replacing an Existing Disposer, continue to Step 1.

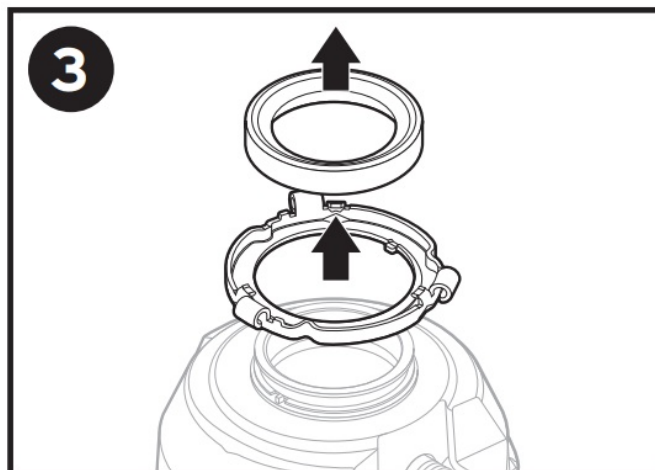
If there is No Existing Disposer, disconnect sink drain and skip to Step 3.

1. Turn off electrical power at circuit breaker or fuse box.

Disconnect drain trap from waste discharge tube. Disconnect dishwasher if connected to the disposer.



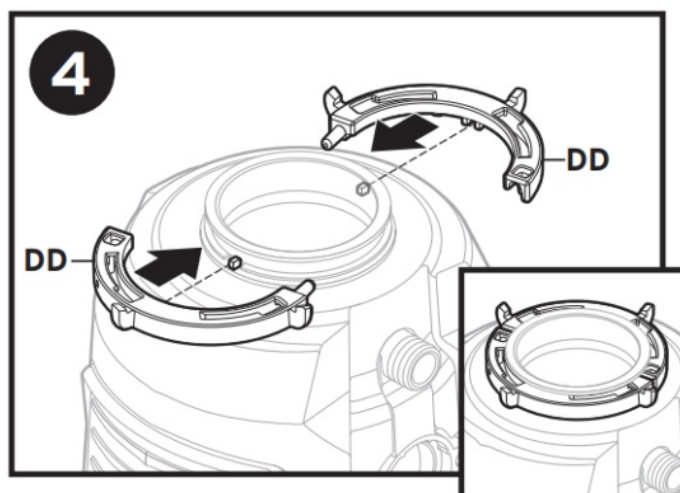
Install Tube Extension



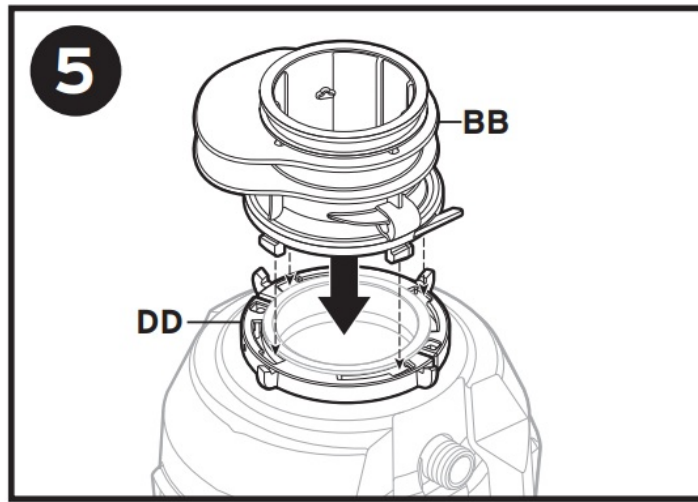
2. Support disposer, insert end of (L) into right side of mounting lug, and turn. Disposer will fall free.

⚠ WARNING FALL HAZARD

3. Remove rubber gasket and mounting ring from disposer.



Install Tube Extension



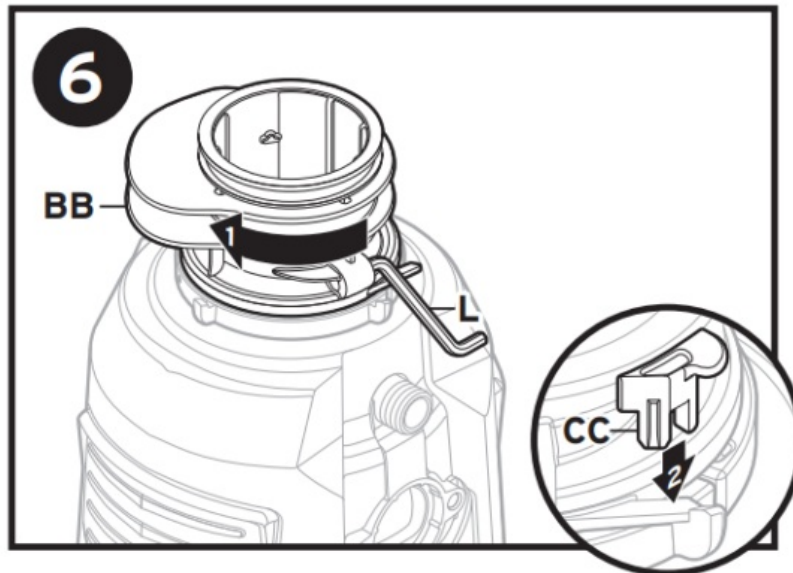
4. Assemble (DD) to top of disposer. Ribs on disposer must be aligned with cutouts on (DD).

Note: (DD) will not click together, nesting in place is sufficient at this point.

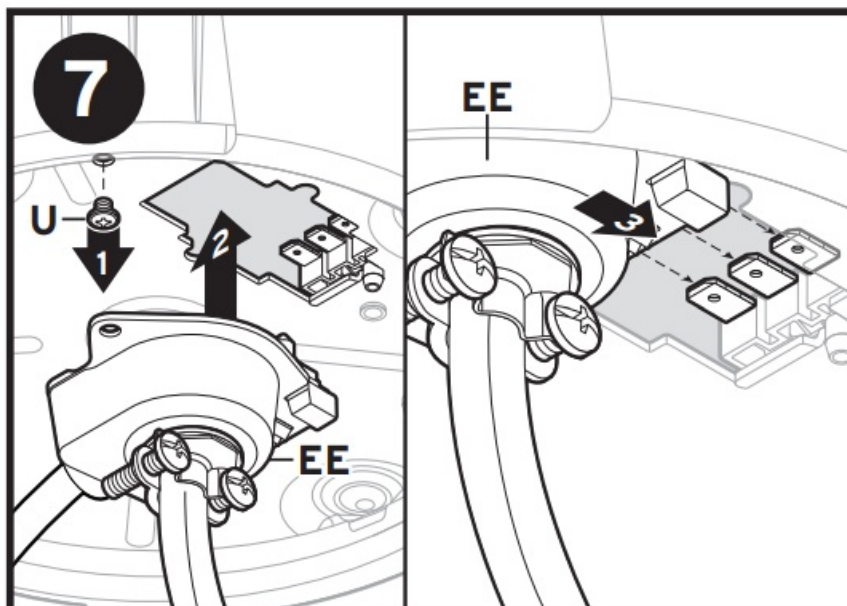
5. Insert the four tabs on bottom of (BB) with holes on (DD).

Note: Lubricate (BB) seal with liquid soap to ease rotation and ensure (BB) is firmly locked in place.

Note: Once snapped into position (BB) cannot be removed.

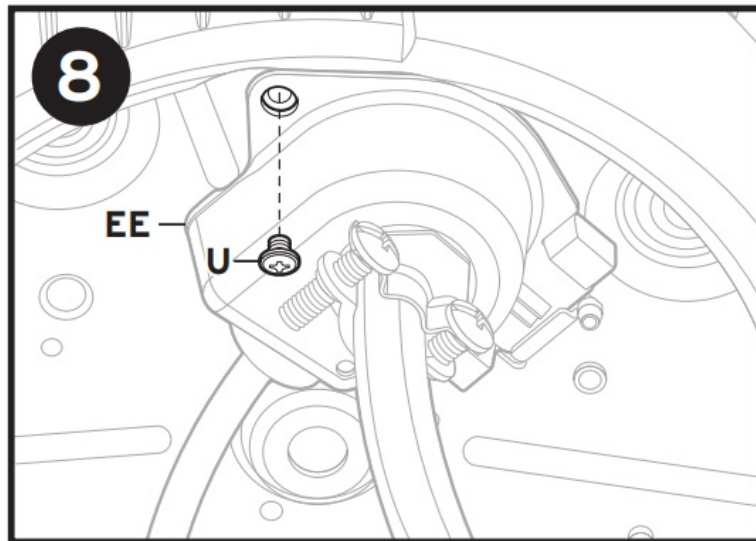


6. Connect the Electrical Supply

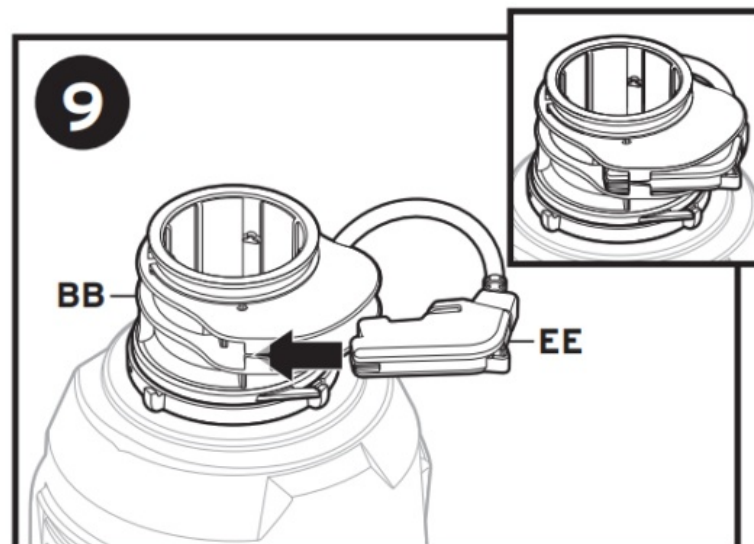


(1) Rotate (BB) with (L) OR a screwdriver until the latch features snap into position.

- (2) Insert (CC) in pocket to ensure (BB) is fully latched.
7. (1) Remove (U) from bottom of disposer.
- (2) Insert (EE) into cut-out on bottom of disposer.
- (3) Push (EE) forward to connect power to disposer.



Final Installation

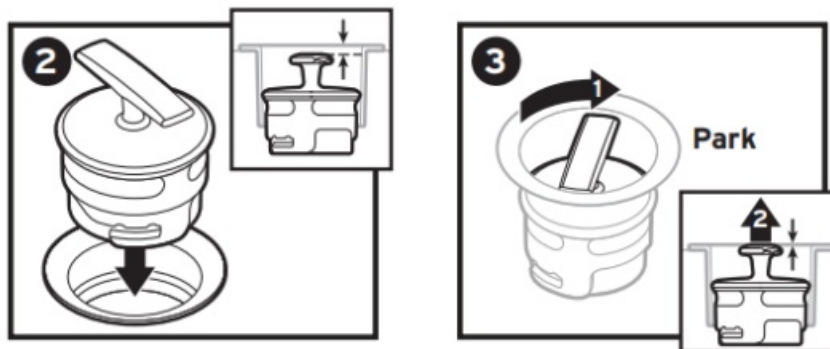


8. Install and tighten (U) through (EE) cover plate and into bottom of disposer.
- Slide magnetic switch (EE) into position on (BB).
- GO to step 20 Disposer Installation Instructions to complete installation.

OPERATING INSTRUCTIONS

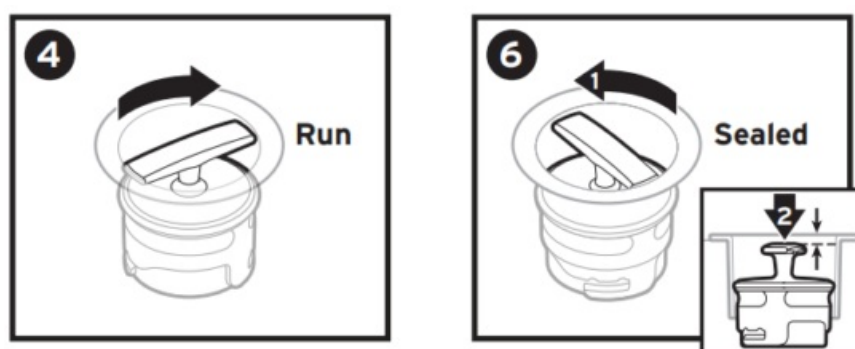
(SAVE THESE INSTRUCTIONS)

1. Place food waste into disposer grind chamber. Do not pack chamber with waste.
Run a strong flow of cold water and place stopper back in sink opening.
2. Place stopper in the fully Sealed (down) position.
3. Turn the stopper clockwise. The stopper will raise into the Park position, allowing water to flow into the disposer grind chamber.



4. With stopper in Park position, continue turning stopper clockwise until disposer Runs.
5. After grinding, turn the stopper counter-clockwise into the Park position, allowing water to flow into the disposer grind chamber.
6. To return to the Sealed position, continue turning stopper counter-clockwise until stopper drops down and seals the drain.

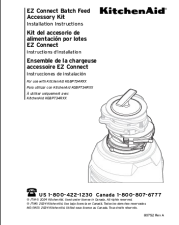

Note: Stopper must be in Sealed position to be removed.



 US 1-[800-422-1230](tel:800-422-1230) Canada 1-[800-807-6777](tel:800-807-6777)

® /TM © 2024 KitchenAid. Used under license in Canada. All rights reserved.

Documents / Resources

	<p>KitchenAid KGBP734RXX Batch Feed Garbage Disposal [pdf] User Guide KGBP734RXX Batch Feed Garbage Disposal, KGBP734RXX, Batch Feed Garbage Disposal, Garbage Disposal, Disposal</p>
	<p>KitchenAid KGBP734RXX Batch Feed Garbage Disposal [pdf] Instruction Manual KGBP734RXX, KGCP334RXX, KGCP534RXX, KGCP710RXX, KGBP734RXX Batch Feed Garbage Disposal, KGBP734RXX, Batch Feed Garbage Disposal, Feed Garbage Disposal, Garbage Disposal, Disposal</p>

References

- [User Manual](#)

[Manuals+](#), [Privacy Policy](#)

This website is an independent publication and is neither affiliated with nor endorsed by any of the trademark owners. The "Bluetooth®" word mark and logos are registered trademarks owned by Bluetooth SIG, Inc. The "Wi-Fi®" word mark and logos are registered trademarks owned by the Wi-Fi Alliance. Any use of these marks on this website does not imply any affiliation with or endorsement.