



Kirisun DP585 DMR Two-way Radio User Guide

[Home](#) » [Kirisun](#) » Kirisun DP585 DMR Two-way Radio User Guide 

Kirisun DP585 DMR Two-way Radio User Guide



Please read carefully the Safety Information and Warranty Card before using the product.

Caution for Using the Battery

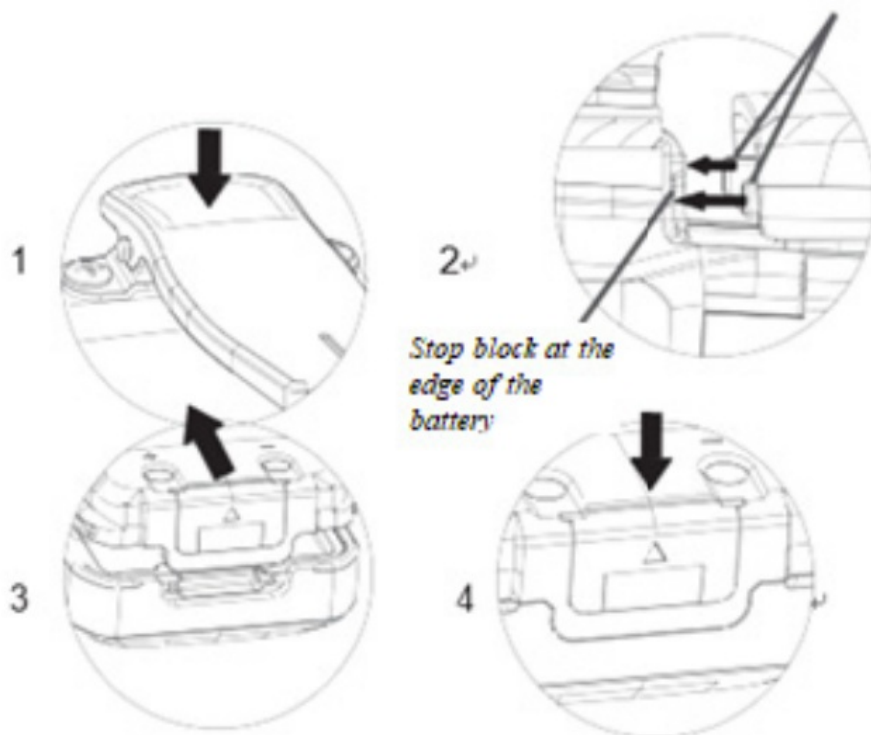
- Explosion may be incurred by using a battery of a non-supplied model, or by shorting the anode and cathode of the battery.
- Charge the battery using the attached charger, and dispose it as instructed.
- Do not strike, squeeze, short out or disassemble the battery.
- Do not put the battery in a high temperature or throw it into a fire.
- Stop using the battery if it is seriously bulged or immersed in water.

Contents

- [1 Installing the Battery](#)
- [2 Charging the Battery](#)
- [3 Basic Operation](#)
- [4 Troubleshooting](#)
- [5 Regulatory](#)
- [6 Restrictions Frequencies are valid for the European country](#)
- [7 Restrictions are valid for the European country](#)
- [8 Disposing of batteries](#)
- [9 FCC radiation exposure statement](#)
- [10 ISED Warning](#)
- [11 Documents / Resources](#)

Installing the Battery

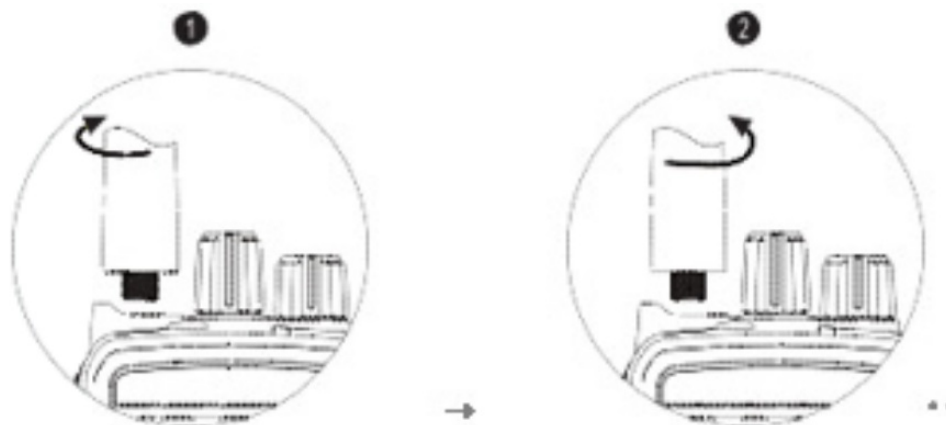
1. Press the upper part of the belt clip gently so that it goes up. (Figure 1)
2. Align the battery with the battery holder at the back of the radio, and then insert the battery. (Figure 2)
3. Push the battery in the direction indicated until the latch is in position. (Figure 3)
4. Press the upper part of the battery until it is latched. (Figure 4)



Installing/Uninstalling the Antenna

Insert the threaded end of the antenna into the antenna interface, and rotate the antenna tight clockwise. (Figure 1)

To uninstall the antenna, rotate it counterclockwise. (Figure 2)

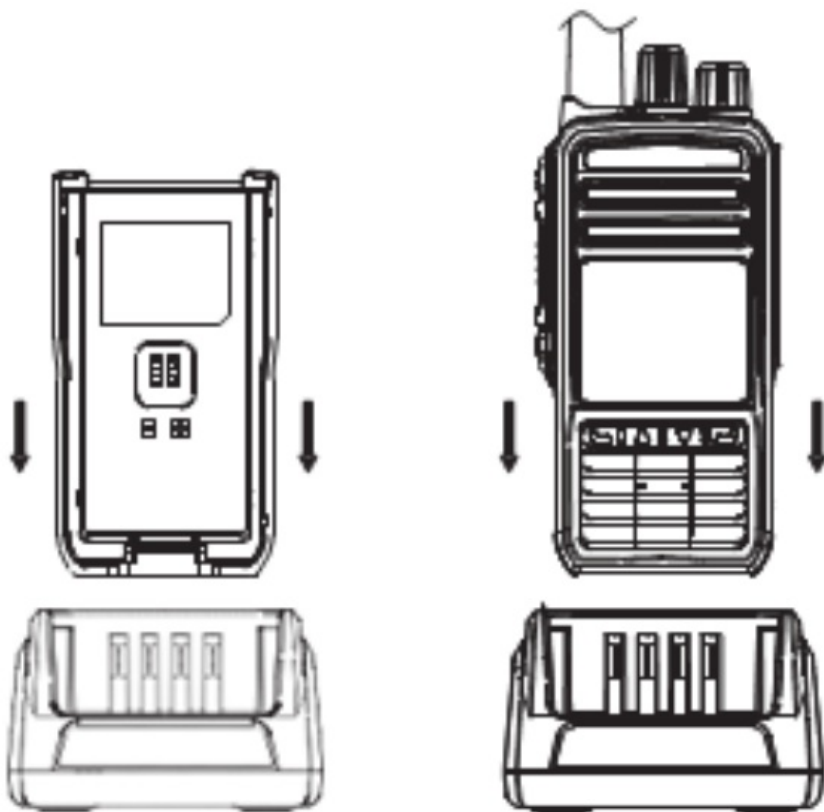


Charging the Battery

1. Plug the power adapter into a qualified AC power socket.
2. Connect the USB cable of the power adapter to the USB port at the back of the desktop charger. Green indicator light is on.
3. Insert the battery only or together with the radio into the charger.
4. Make sure the battery contacts the charging terminals properly and red indicator light is on.
5. When the indicator light turns from red to green, charging is finished.
6. After this, wait 1 to 2 hours before taking out the battery to achieve the best performance.

Note:

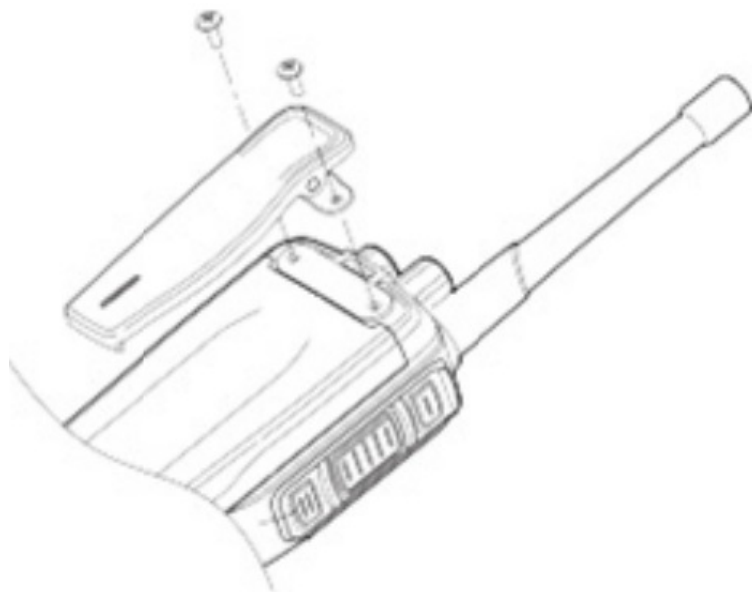
1. The radio is delivered uncharged. Before using it for the first time, please charge the battery.
2. Always use the supplied lithium battery and desktop charger.
3. A new battery or one that has been stored for more than 2 months after charging needs to be charged for several times to achieve its normal capacity.



Installing/Uninstalling Belt Clip

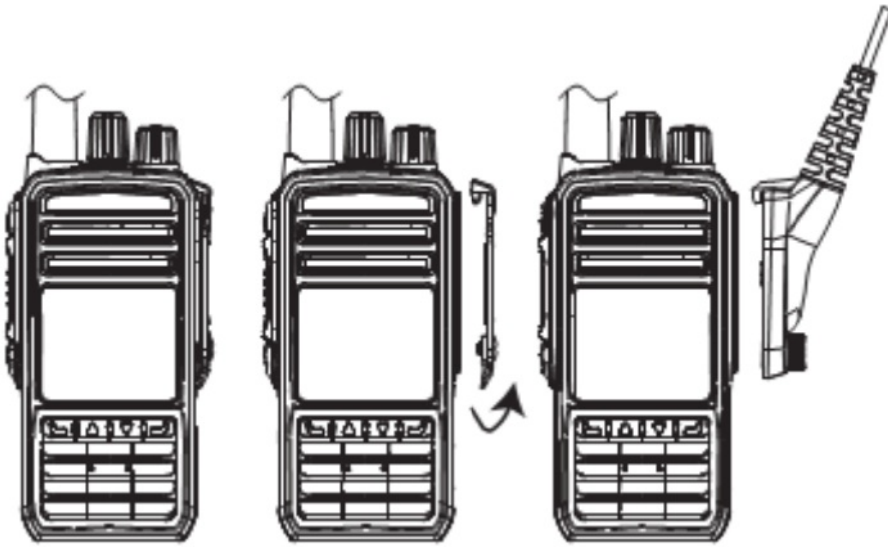
Align the two screw holes of the belt clip with the screws holes at the back of the radio, and screw up the screws using a screwdriver.

To uninstall the belt clip, unscrew the screws and take off the belt clip.



Installing an Earphone (Optional)

To use an earphone, open the earphone cover at the upper part of the right side of the radio, and then plug the earphone connector into the jack.



Basic Operation

1. Powering On/Off

To power on the radio, rotate the Power/Volume knob clockwise until you hear a click.

To power off the radio, rotate the Power/Volume knob counterclockwise until you hear a click.

2. Selecting a Channel

In standby state, rotate the Channel knob to select a channel.

3. Adjusting the Volume

When the radio is on, turn the Power/Volume knob clockwise to turn up the volume, or counterclockwise to turn it down.

4. Making a Call

On a digital channel, press the PTT key to call the default contact of the channel.

5. Receiving a Call

Green indicator light is on when signals are received.

While working on a digital channel, the radio outputs voice when it receives an individual call, group call or all call.

While working on an analog channel, the radio outputs voice when it receives signals, and the CTCSS code is the preset one for the channel or analog signaling is disabled for the radio.

6. Answering a Call

On a digital channel, you can answer a call by holding down the PTT key within the call duration. After this duration is up, you need to initiate a new call.

(**Note:** You may have the call duration set by your dealer.)

On an analog channel, you can answer a call by holding down the PTT key and speaking to the microphone.

7. TOT

TOT (Time-out Timer) is to prevent a user from occupying a channel for too long. If the radio transmits continuously for a duration longer than that set by dealer, transmission stops and there is an alert tone, and you may cancel the tone by releasing the PTT key. After a period, you may resume transmission by holding down the key. (**Note:** You may have this period set by your dealer.)

If a pre-alarm is enabled, you hear pre-alarm alert tone before TOT time is up.

8. Scan

The radio scans in carrier mode to search for active channels. After finding an active channel, the radio stays

on it for you to communicate.

To scan the associated channel list of the current channel, press Scan. To stop ongoing scan, press Scan.

9. Switching to Digital/Analog Mode

You can set a channel to analog or digital mode, and switch among channels by rotating the Channel knob. In analog mode, some functions are disabled, for example, short message, and corresponding menu items are hidden.

10. Initiating a Call during Scan

During scan, press the PTT key to transmit and talk on a channel, which you may have preset by your dealer.

11. Prior Scan

If a prior channel is set in the scan list, it is scanned in priority when scan is enabled. The priority scan mode is cycle scan, and it scans priority channel every time when it scans a conventional channel. For example, if there are channel 1, 2, 3, 4 in the scan list and channel 2 is priority channel, the scan cycle will be 1->2->3->2->4->2->1.

12. Stun/ Revive

The radio receives and decodes Kill and Revive signals from another radio, and performs accordingly.

When the radio is killed, it receives no signals but Revive.

When the radio is revived, it transmits and receives signals normally.

Note: This function is available in digital mode only, and is enabled by your dealer.

13. Emergency Alarm

Under emergency, you may send an emergency alarm by pressing the Function key programmed to send alarms.

To cancel an alarm, press the Function key programmed to exit emergency alarm.

You need to set an alarm mode and an alarm type.

Alarm Mode

- Emergency Alarm: The radio sends an alarm and then exit alarm state automatically.
- Emergency Alarm + Emergency Call: After the radio sends an emergency alarm, press the PTT key to initiate an emergency call.
- Emergency Alarm + Auto Background Tone: The radio sends an emergency alarm and then background tone.

Alarm Type

- **None:** Alarm is disabled. You cannot send an alarm by pressing the Function key programmed to perform this function.
- Siren Only: In alarm state, siren plays locally and the control center cannot receive alarm signals.
- Conventional: In alarm state, there is light and sound alert, and the radio can receive response from other members.
- Secret: In alarm state, there is no light or sound alert, and the radio cannot receive response from other members.
- Secret with Voice: In alarm state, there is no light or sound alert, but the radio can receive response from other members.

Note:

An emergency alarm is a non-speech signal the radio sends to trigger another radio to give off an alarm. You may set the above parameters using the programming software.
To guarantee emergent communication, an emergency call is prior to a common call.

Programmable Keys

You may have the Function key programmed by your dealer to perform a specific function as needed.

Note:

- **Press:** Press down and release quickly.
- **Hold down:** Press down and hold for a period set through the CPS.

NO.	Function	Description
1	Void	The key is disabled.
2	High/Low Power	Switch between high and low power.
3	Monitor	With CTCSS enabled on current analog channel, switch to carrier squelch mode (i.e. cancel CTCSS). Output voice when carrier is matched. Press again to go back to the previous state.
4	Emergency Alarm	In emergency, send emergency alarm to seek help.
5	Exit Emergency Alarm	Quit emergency alarm state.
6	Squelch On/Off	Receive weak signals on an analog channel.
7	Squelch Level	Adjust signal strength required to receive signals.
8	Scan	Listen to the traffic on other channels.
9	Prompt Tone On/Off	Enable/disable prompt tones.
10	Zone	Switch among zones.
11	Repeater/Talk Around	Enable/disable repeater function for the channel.
12	Nuisance Delete	Delete from scan list a channel found through scan.
13	Battery Capacity Indication	Indicate remaining battery capacity.
14	Broadcast Call	Set broadcast call.

LED Indicator

Indicator State	Device State
Red Light on	Transmitting signals
Green Light on	Receiving signals
Red Light Flashing	Low battery. Please charge.
Green Light Flashing	Scanning.
Orange Light Flashing	In call hold state under digital mode. Exit when hold time is up
Orange Light on	The channel unusable. Switch to another channel to quit
Red Light Flashing Fast	CPS is reading configurable parameters of the radio
Green Light Flashing Fast	CPS is programming configurable parameters of the radio

Icons (DP580 only)

Icon	Description
	Signal strength More bars indicate stronger signal and less bars weak signal. It only shows up when receiving.
	Battery indicator Less space indicates more battery power. When the battery is low, the icon will turn red.
	High power
	Low power
	Mute
	Unread message
	Inbox full
	Emergency alarm mode
	Encryption enabled
	Man Down enabled
	Man Down alarm
	Talkaround mode
	GPS enabled but unlocated
	Receiving GPS data
	Radio located
	Scanning (rotating icon)
	Scan stay on Priority channel 1
	Scan stay on Priority channel 2
	Accessory connected
	Lone Worker enabled
	Monitoring enabled
	Roaming enabled
	USB connected
	BT enabled
	BT connected
	ID type
	Private call
	Group call

Troubleshooting

No.	Problem	Reason and Solution
1	Power-on failure	1. Battery out Solution: Charge or replace the battery.2. Faulty volume switch Solution: Get it repaired at the authorized service station.
2	Low voice during call	1. Speak too far from the microphone Solution: Keep a distance of 3~10 cm from the microphone.2. Wrong volume setting Solution: Rotate the volume knob clockwise to increase the volume.
3	Failed to transmit or receive	1. Wrong channel parameters Solution: Set the parameters properly and try again.2. Wrong group identity for default contact Solution: Select a right group.3. Beyond communication scope Solution: Reduce the distance.

Kirisun reserves the right to the final interpretation of this document. This document is only for reference, and the actual product prevails.

Notice to user

Regulatory



Kirisun directive (EU) No 2014/53 of the European Parliament and of the Council of 16 April 2014 on harmonization of the laws of the Member States relating to the making available on the market of radio equipment (RED) and that any applicable Essential Test Suites measurement have been performed.

Restrictions Frequencies are valid for the European country

Country	Frequency Range(MHz)	Max. transmit power(W)
Germany(DE)	406.1-430 ,440-470	4
France (FR)	406.1-430,444.5-447, 451.5-460, 461.5-470	4
United Kingdom (UK)	410-430 ,440-470	4
Italy(IT)	440-443,445-470	4
Greece(EL)	406.1-430 ,440-470	4
Spain(ES)	406.1-430 ,440-470	4
Ireland (IE)	410 – 430,440 – 455, 456 – 459,460 – 470	4
Belgium(BE)	406.1-430 ,440-470	4
Croatia (HR)	406.1-430 ,440-470	4
Cyprus (CY)	406.1-430 ,440-470	4
Portugal (PT)	440-470	4
Malta(MT)	406.1-430 ,440-470	4
Luxembourg (LU)	410-430,440- 470	4

Bulgaria(BG)	410 -430,440-470	4
Latvia (LV)	406.1-430,440-450,456 -470	4
Slovenia(SI)	406.1-430 ,440-470	4
Czech Republic(CZ)	448 – 451.3,457.38 – 461.3,467.38 – 470	4
Denmark(DK)	406.1-430,450 – 470	4
Estonia(EE)	406.1 – 410,412.5 – 420, 422.5-430,440 -442.5,443 – 450,446 -446.2,450 -453,457.575- 463,467.575 -470	4
Lithuania(LT)	406.1 – 410 , 413 – 418.6 ,423- 428.6 ,440- 450 ,450 – 52.9875 ,458.1125- 462.9875 ,467.4875 – 467.5875	4
Hungary(HU)	417 – 420,442 – 445,456 – 460, 461.3 – 470	4
Netherlands(NL)	410 -430,440-470	4
Austria(AT)	444.9 – 444.900001, 450 – 456, 457.33 -457.330001,457.45 – 458.3,460 -470	4
Poland(PL)	448 – 449.5,457 – 460,467 – 470	4
Romania (RO)	408 – 410.8,415 – 420.8,425 – 429.8, 440 -450.55,457.5 – 458.2, 460 – 460.55,467.5 – 468.2	4
Slovakia(SK)	441.025 – 451.31,455.73 – 461.31,465.73- 470	4
Finland(FI)	407.525408.55,410.0125 -410.8875,417.525 – 417.9,419.15 – 419.525,419.55625 -419.71875,420.0125420.8875,426.35-427.5,427.525 -427.9, 429.15 -429.525,429.55625- 429.71875,440.0125 -440.5875,440.60625 440.89375,442.775 443,443.025 – 444,444.025 – 444.525,444.55 444.975,445 -446,447.00625 447.29375,447.30625 -447.70625,449.025 – 449.525,449.55 – 449.975, 450.325- 452.475,	4
	452.525 – 452.975,453.0125 -453.6625,469.725 – 469.975	
Sweden(SE)	406.1 -430, 442 – 444,444.5875 – 452.5,457.5 – 462.5,467.5 – 470	4

Restrictions are valid for the European country

Restrictions are valid for the following countries:

France (FR), United Kingdom (UK), Italy(IT), Ireland (IE), Portugal (PT), Luxembourg (LU) , Bulgaria(BG) , Latvia (LV), Czech Republic (CZ) , Denmark(DK), Estonia(EE), Lithuania(LT) , Hungary(HU) , Netherlands(NL) , Austria(AT), Poland(PL), Romania (RO) , Slovakia(SK) , Finland(FI) , Sweden(SE)

Waste Electrical and Electronic Equipment recycling



This symbol on the product or its packaging indicates that this product must not be disposed of as household or commercial waste. Some countries have set up collection and recycling systems for waste electrical and electronic products. By ensuring that this product and its packaging is disposed of correctly, you will help prevent potentially negative consequences for the environment and human health, and help conserve natural resources. Please dispose of your waste product according to your national and local regulations. Contact your service provider or Kirisun for information about disposing of this product in your region of the world.

Disposing of batteries



Your radio is supplied with a rechargeable lithium-ion battery. This symbol on the battery and its packaging indicates that it must not be disposed of with household or commercial waste. Please dispose of your waste batteries according to your national and local regulations. Contact your service provider or Kirisun about recycling batteries in your region of the world.

US Markets

FCC radiation exposure statement

Any Changes or modifications not expressly approved by the party responsible for compliance could void the user's authority to operate the equipment.

This device complies with part 15 of the FCC Rules. Operation is subject to the following two conditions: (1) This device may not cause harmful interference, and (2) this device must accept any interference received, including interference that may cause undesired operation.

Note: This equipment has been tested and found to comply with the limits for a Class B digital device, pursuant to part 15 of the FCC Rules. These limits are designed to provide reasonable protection against harmful interference in a residential installation. This equipment generates, uses and can radiate radio frequency energy and, if not installed and used in accordance with the instructions, may cause harmful interference to radio communications. However, there is no guarantee that interference will not occur in a particular installation. If this equipment does cause harmful interference to radio or television reception, which can be determined by turning the equipment off and on, the user is encouraged to try to correct the interference by one or more of the following measures:

- Reorient or relocate the receiving antenna.
- Increase the separation between the equipment and receiver.
- Connect the equipment into an outlet on a circuit different from that to which the receiver is connected.
- Consult the dealer or an experienced radio/TV technician for help.

RF Exposure Compliance and Control Guidelines and Operating Instructions

To control your exposure and ensure compliance with the occupational/controlled environment exposure limits always adhere to the following procedures.

Guidelines:

- Do not remove the RF Exposure Label from the device.
- User awareness instructions should accompany device when transferred to other users.
- Do not use this device if the operational requirements described herein are not met. Operating Instructions:
- Transmit no more than the rated duty factor of 50% of the time. To transmit (talk), push the Push-To-Talk (PTT) button.
- To receive calls, release the PTT button. Transmitting 50 % of the time, or less, is important because this radio generates measurable RF energy exposure only when transmitting (in terms of measuring for standards compliance).
- Hold the radio in a vertical position in front of face with the microphone (and the other parts of the radio, including the antenna) at least one inch (2.5 cm) away from the nose. Keeping the radio at the proper distance is important because RF exposures decrease with distance from the antenna. Antenna should be kept away from eyes.
- When worn on the body, always place the radio in approved clip, holder, holster, case, or body harness for this product. Use of non-approved accessories may result in exposure levels, which exceed the occupational/controlled environment RF exposure limits.
- Use only manufacturer's name approved supplied or replacement antennas, batteries, and accessories. Use of non-manufacturer-name approved antennas, batteries, and accessories may exceed the FCC and IC RF exposure guidelines.
- For a list approved accessories please consult your local dealer for information.

ISED Warning

This product meets the applicable Industry Canada technical specifications. / Le présent matériel est conforme aux spécifications techniques applicable d'Industrie Canada.

This device complies with Innovation, Science, and Economic Development Canada licence-exempt RSS standard(s). Operation is subject to the following two conditions:

1. this device may not cause interference, and
2. this device must accept any interference, including interference that may cause undesired operation of the device.

Documents / Resources

